

How to Setup PureVPN on Windows Vista SSTP?

Things to Consider:

Before you begin, please make sure that:

- You have a working internet connection
- Windows Supported Device.
- A Premium PureVPN account (If you haven't bought yet [click here](#) to buy)

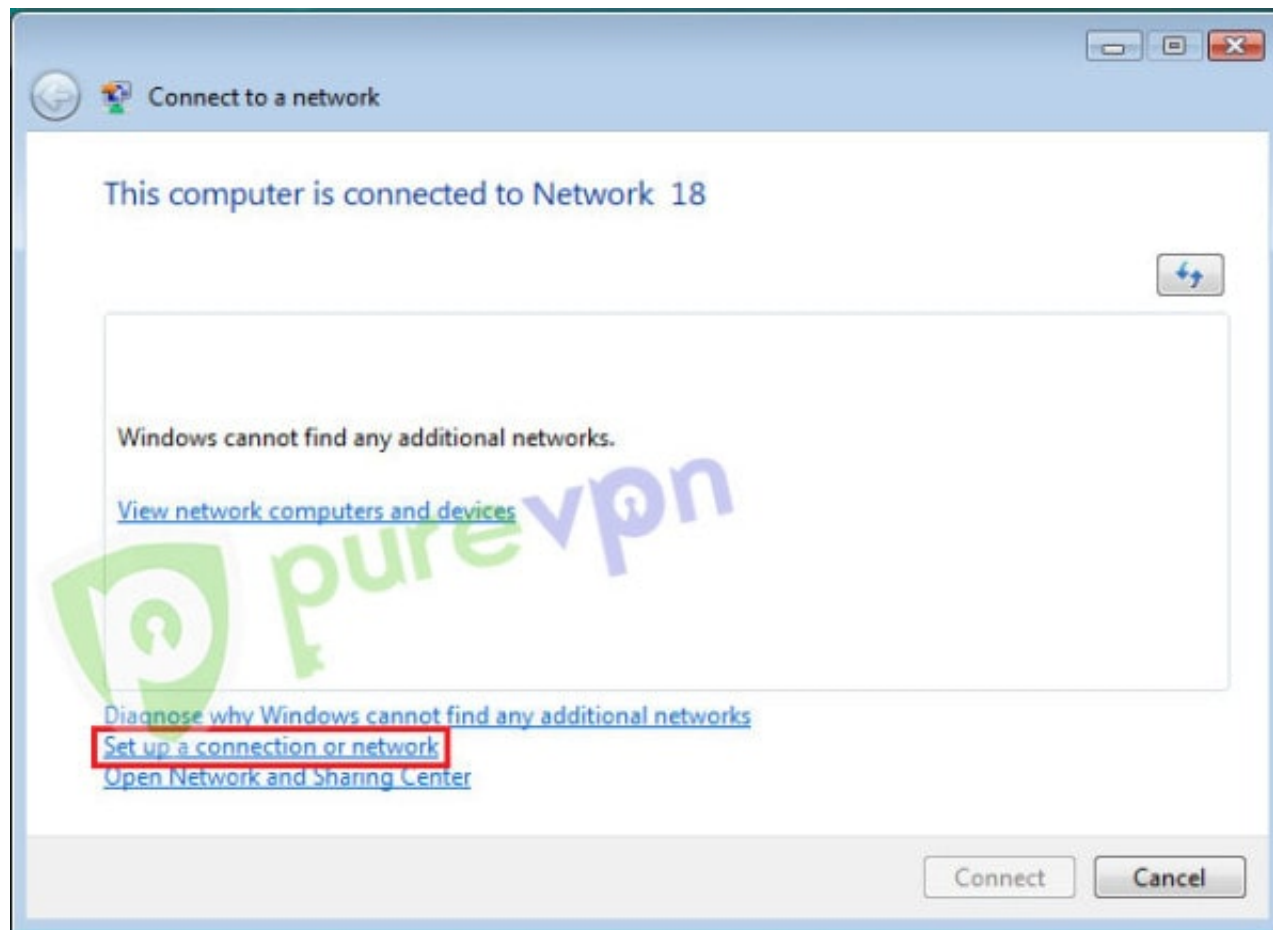
Follow these simple steps to configure PureVPN on Windows Vista:

Note: We have just launched New PureVPN Windows Software BETA version. If you need guide on BETA version [Click Here](#).

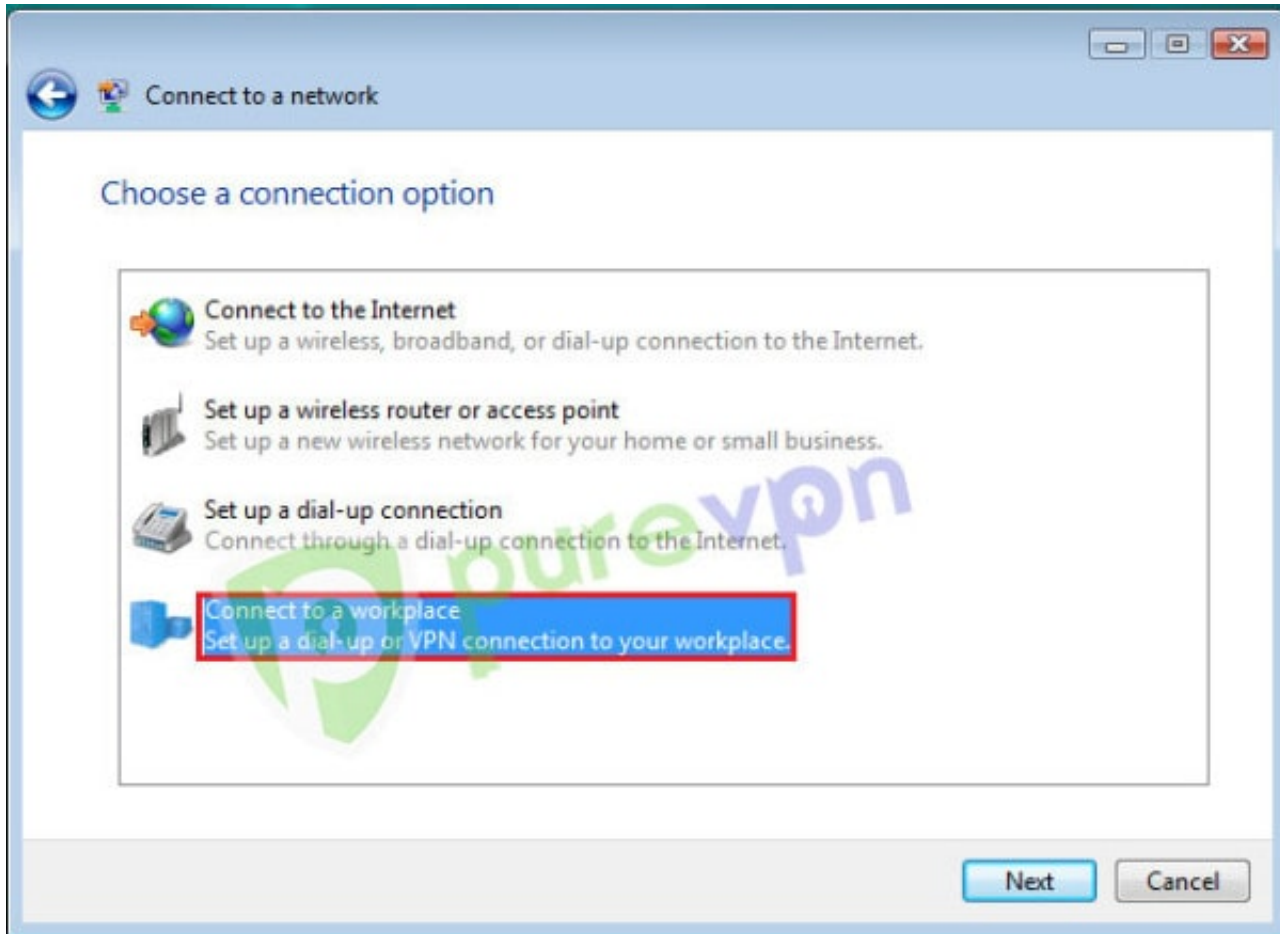
1 Click on **Start** and click on “**Connect To**”



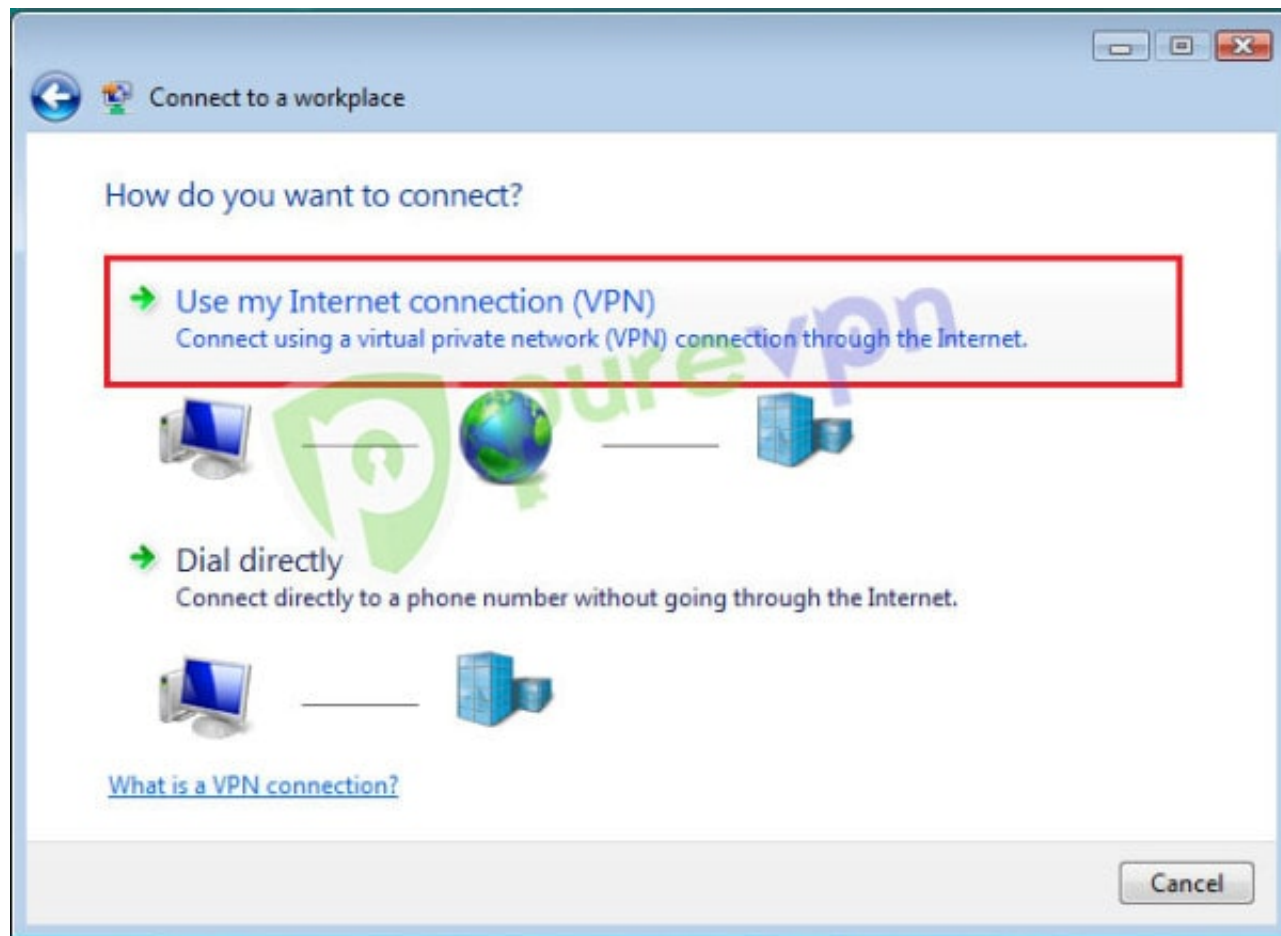
2 Click on “**Set up a connection or network**”



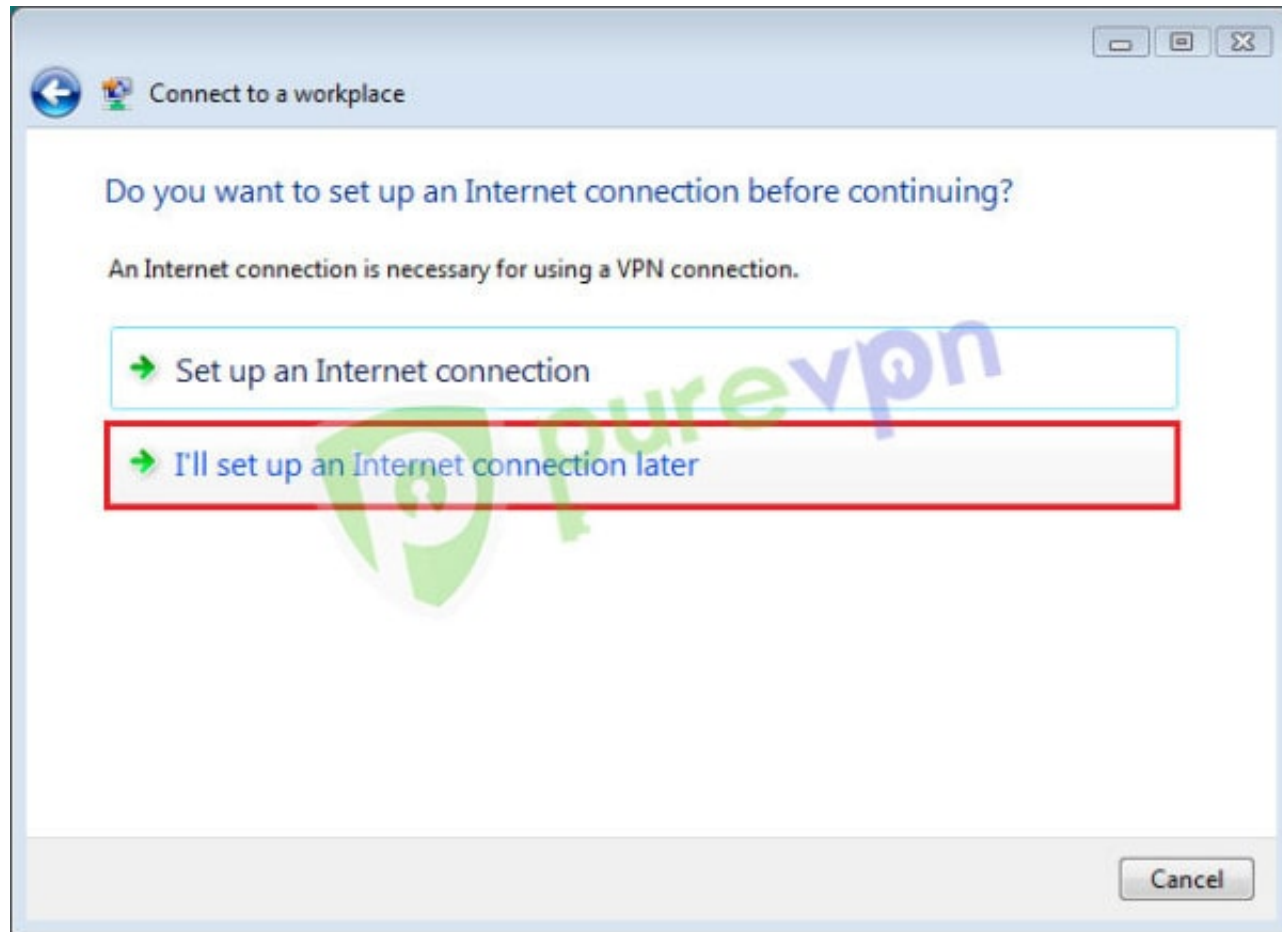
3 Select **Connect to a workplace** and click **“Next”**



4 Click on **“Use my Internet connection (VPN)”**

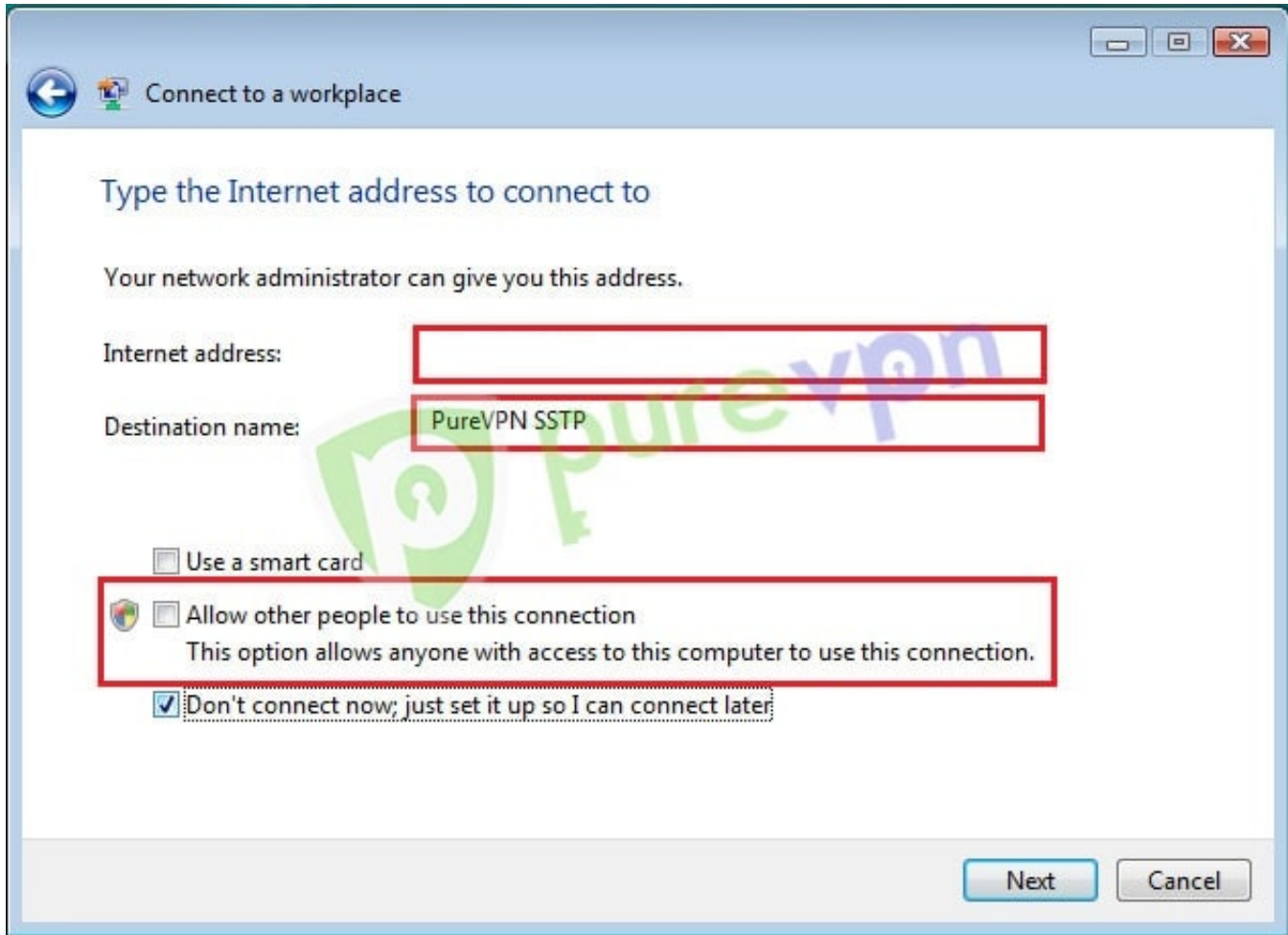


5 Click on "I'll set up an Internet connection later"

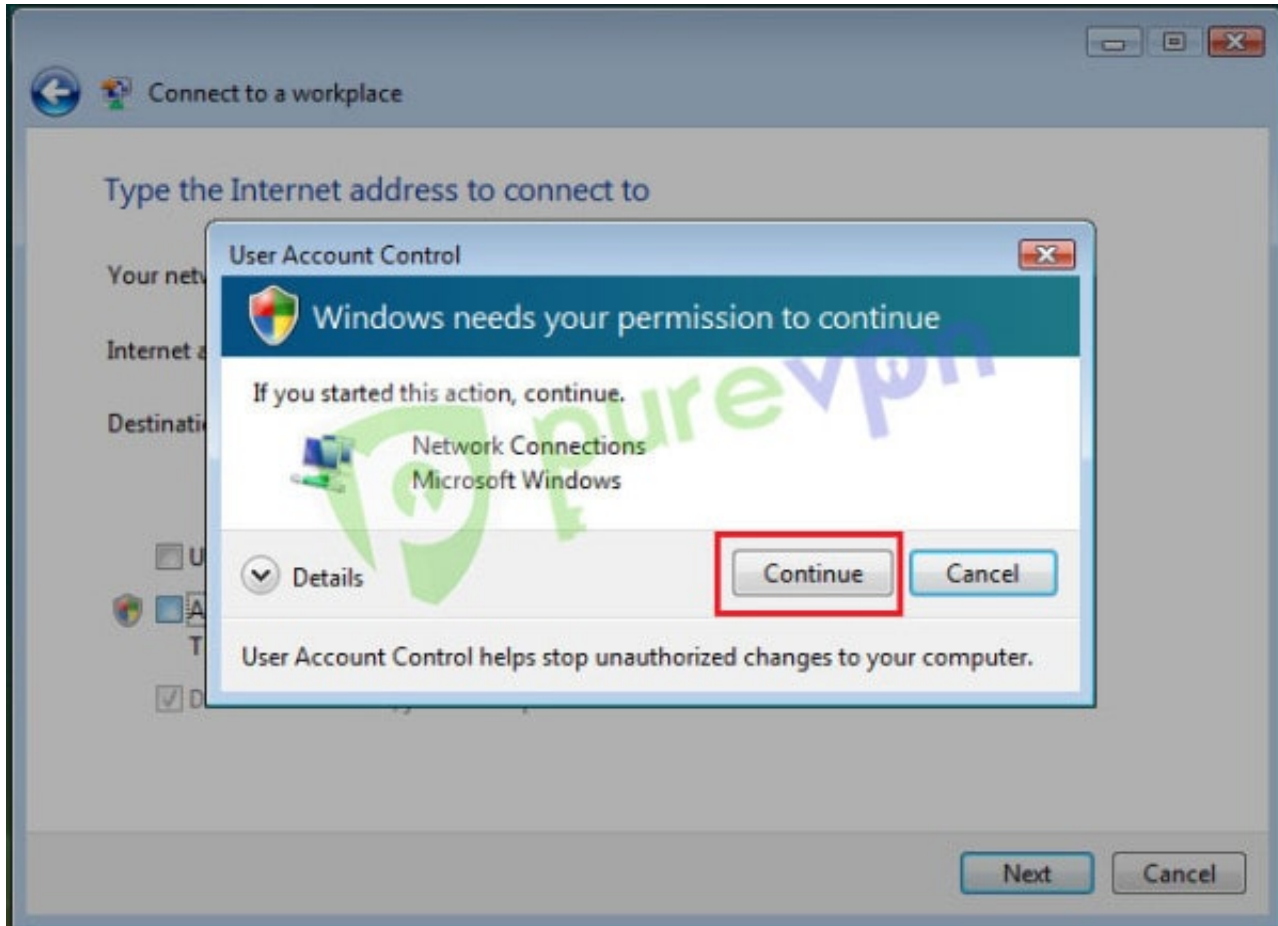


6 Insert the following info:

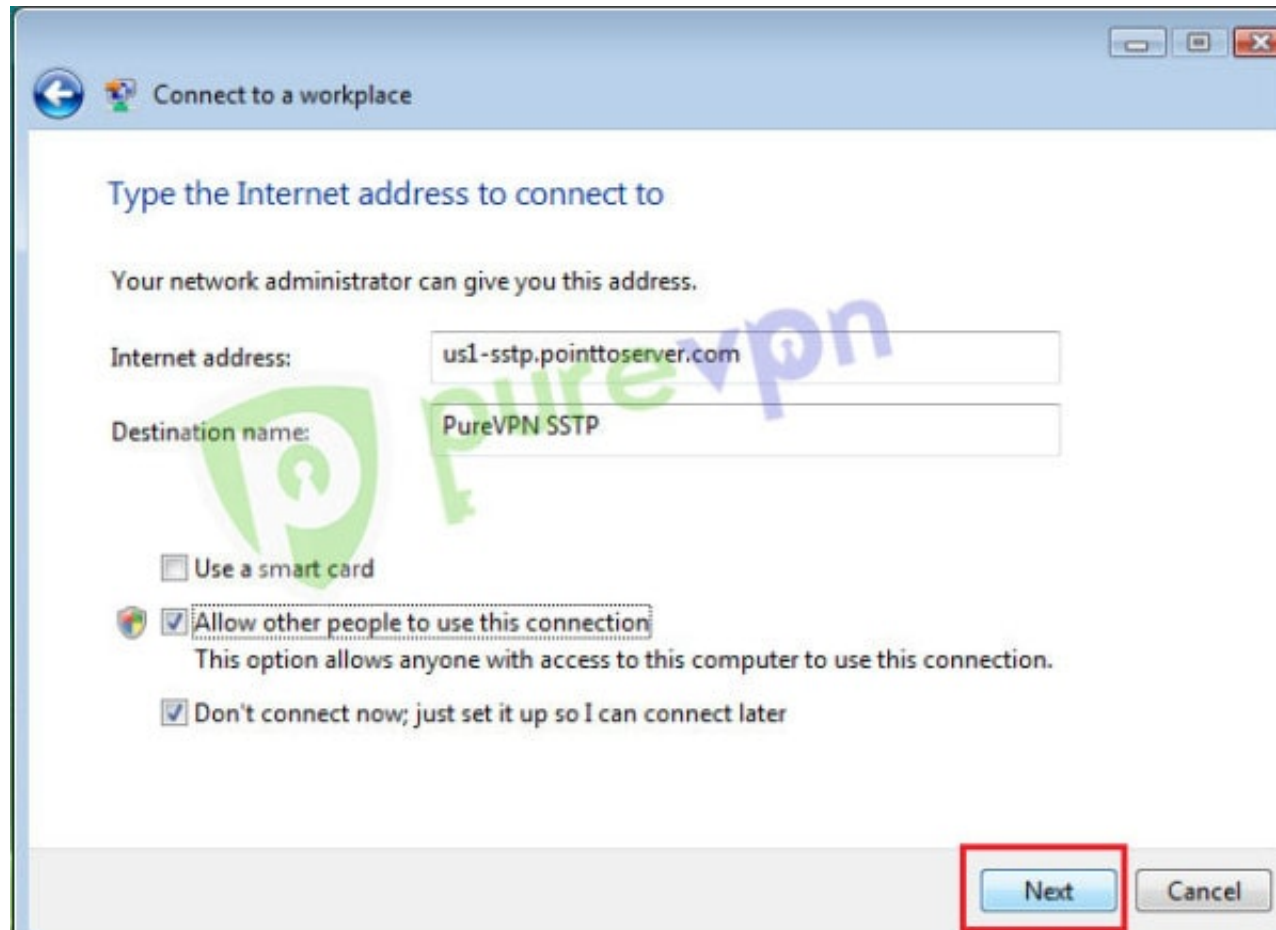
- Insert **desired server address** in **Internet Address box**. [Click here](#) to get the server list.
- Insert **PureVPN SSTP** or **PureVPN US** etc as **Destination name**
- Click on "**Allow other people to use this connection**"



7 Click on **“Continue”**



8 Select **“Don’t connect now; just set it up so I can connect later”** then Click **“Next”**



Connect to a workplace

Type the Internet address to connect to

Your network administrator can give you this address.

Internet address:

Destination name:

Use a smart card

Allow other people to use this connection
This option allows anyone with access to this computer to use this connection.

Don't connect now; just set it up so I can connect later

9 Insert the following info:

- Insert your **Username** and **Password** provided by **PureVPN**.
- Tick "**Remember this password**"
- Click on "**Create**"

Connect to a workplace

Type your user name and password

User name: purevpn0s123456

Password:

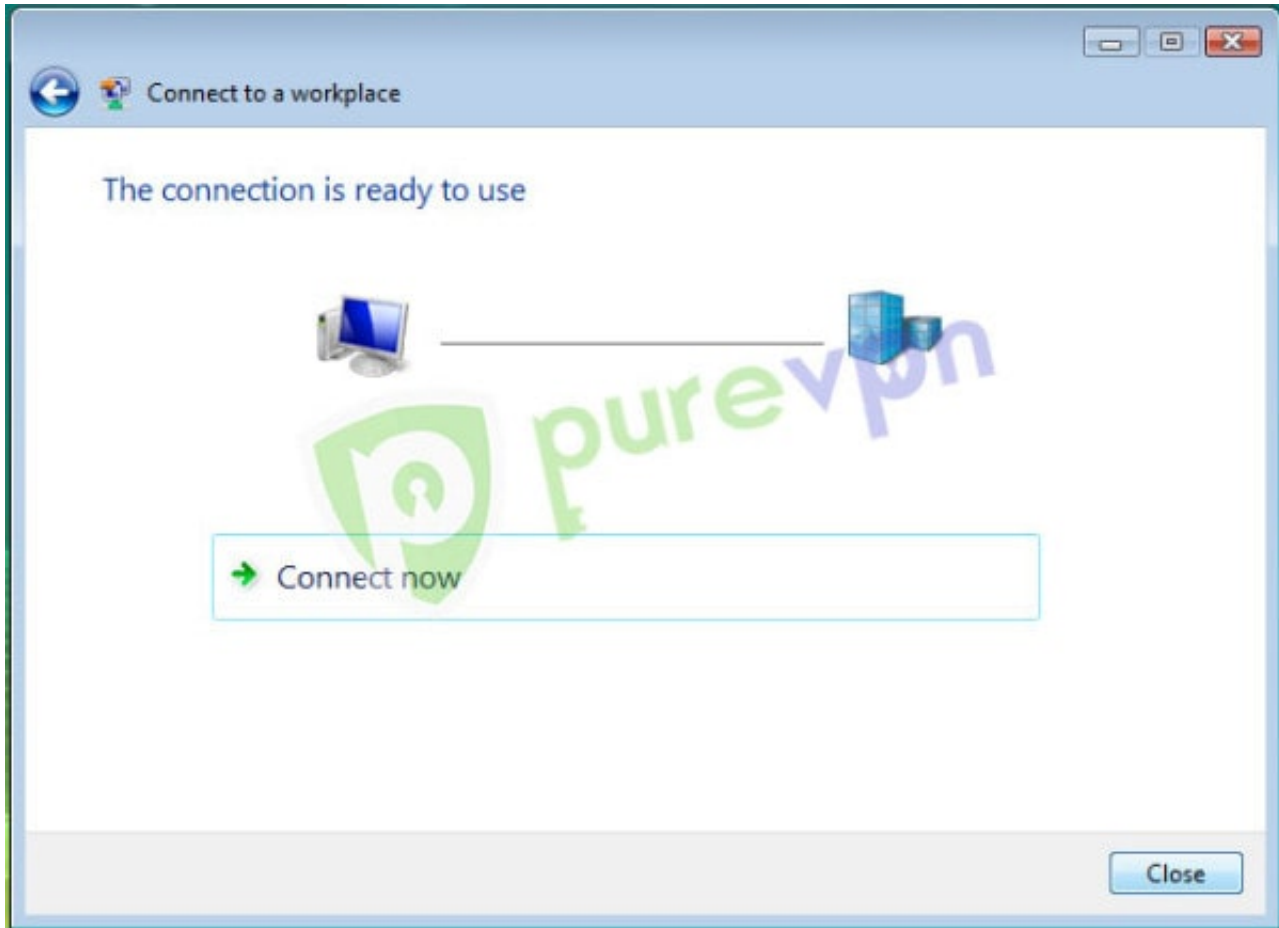
Show characters

Remember this password:

Domain (optional):

Create Cancel

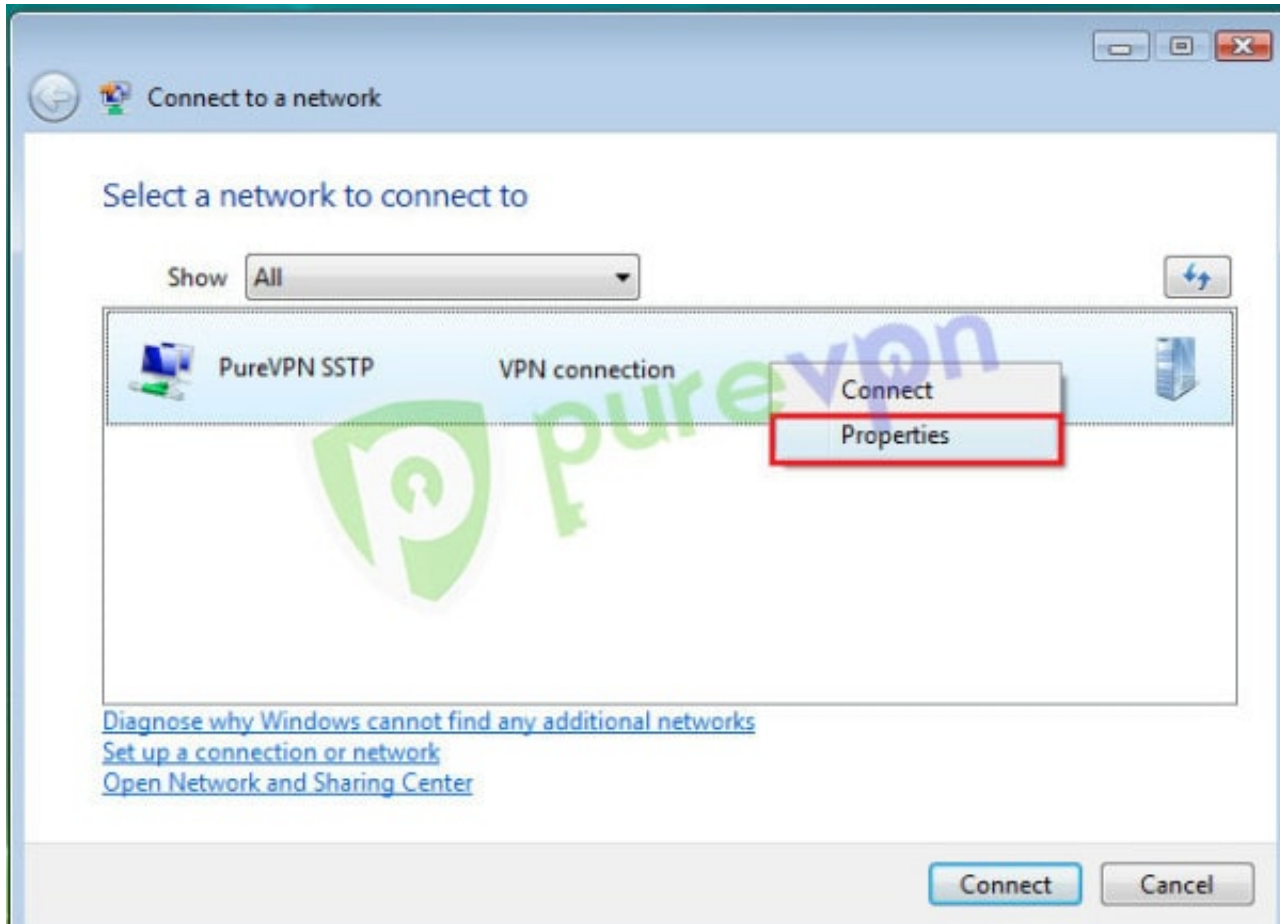
10 Click on **“Close“**



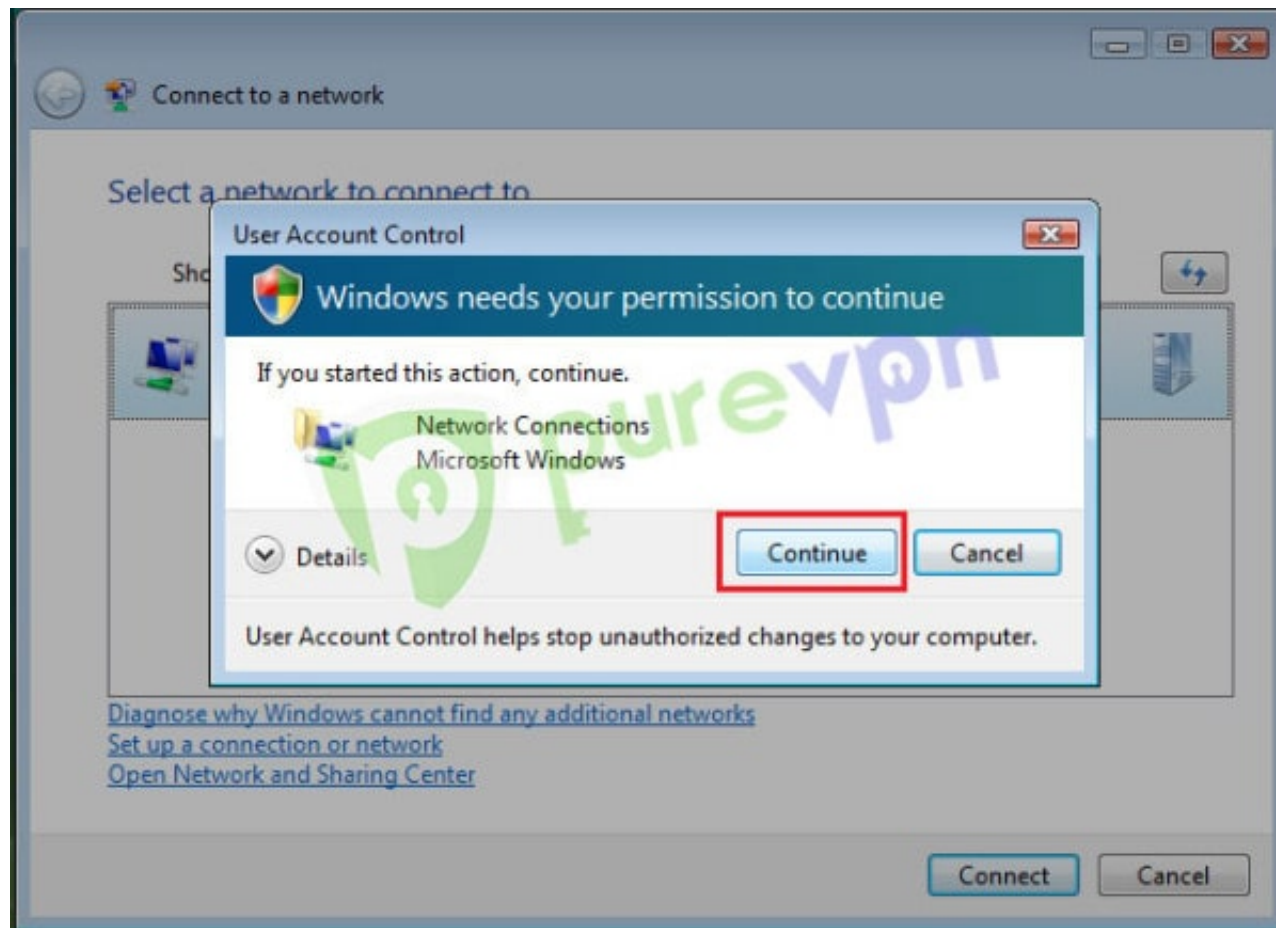
11 Click on **Start** and click on **Connect To**



12 Right click on **PureVPN SSTP** connection and select **“Properties“**

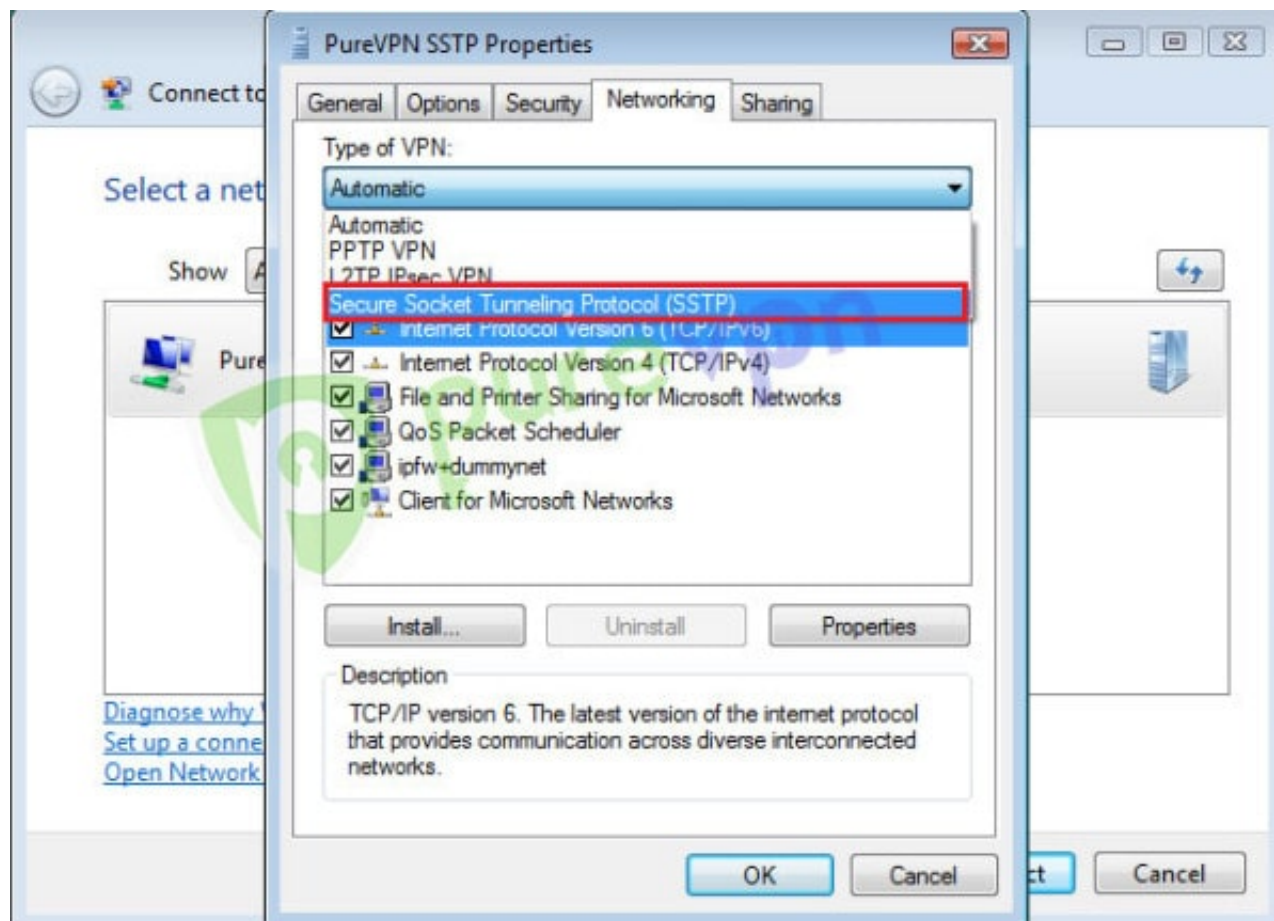


13 Click on “Continue”



14 Insert the following info:

- Click on "**Networking**" tab
- Select "**Secure Socket Tunneling Protocol (SSTP)**" from drop down menu



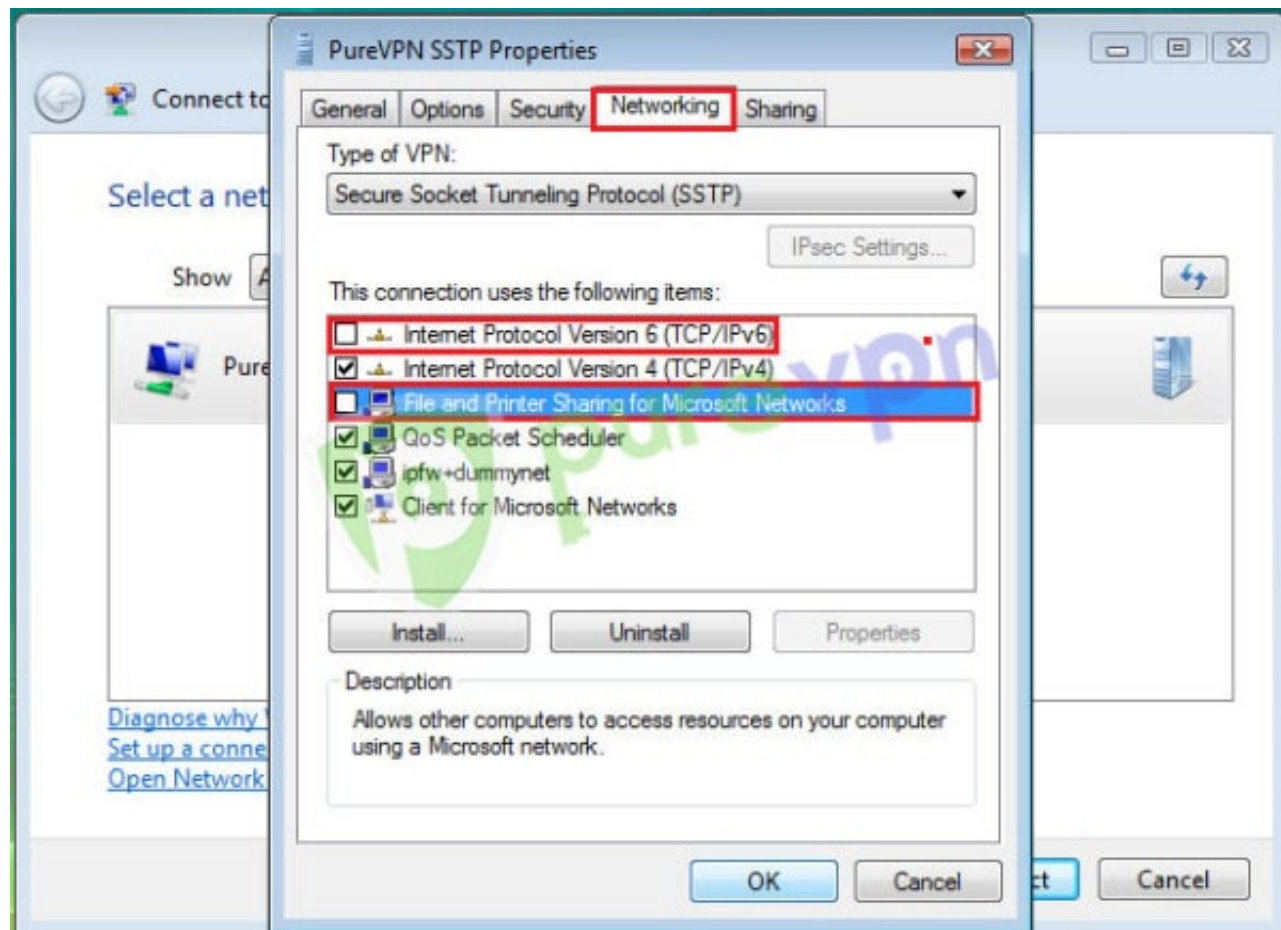
15 Insert the following info:

- Uncheck “**Internet Protocol Version 6 (TCP/IPv6)**” and “**File and Printer Sharing for Microsoft**”
- Click on “**OK**”

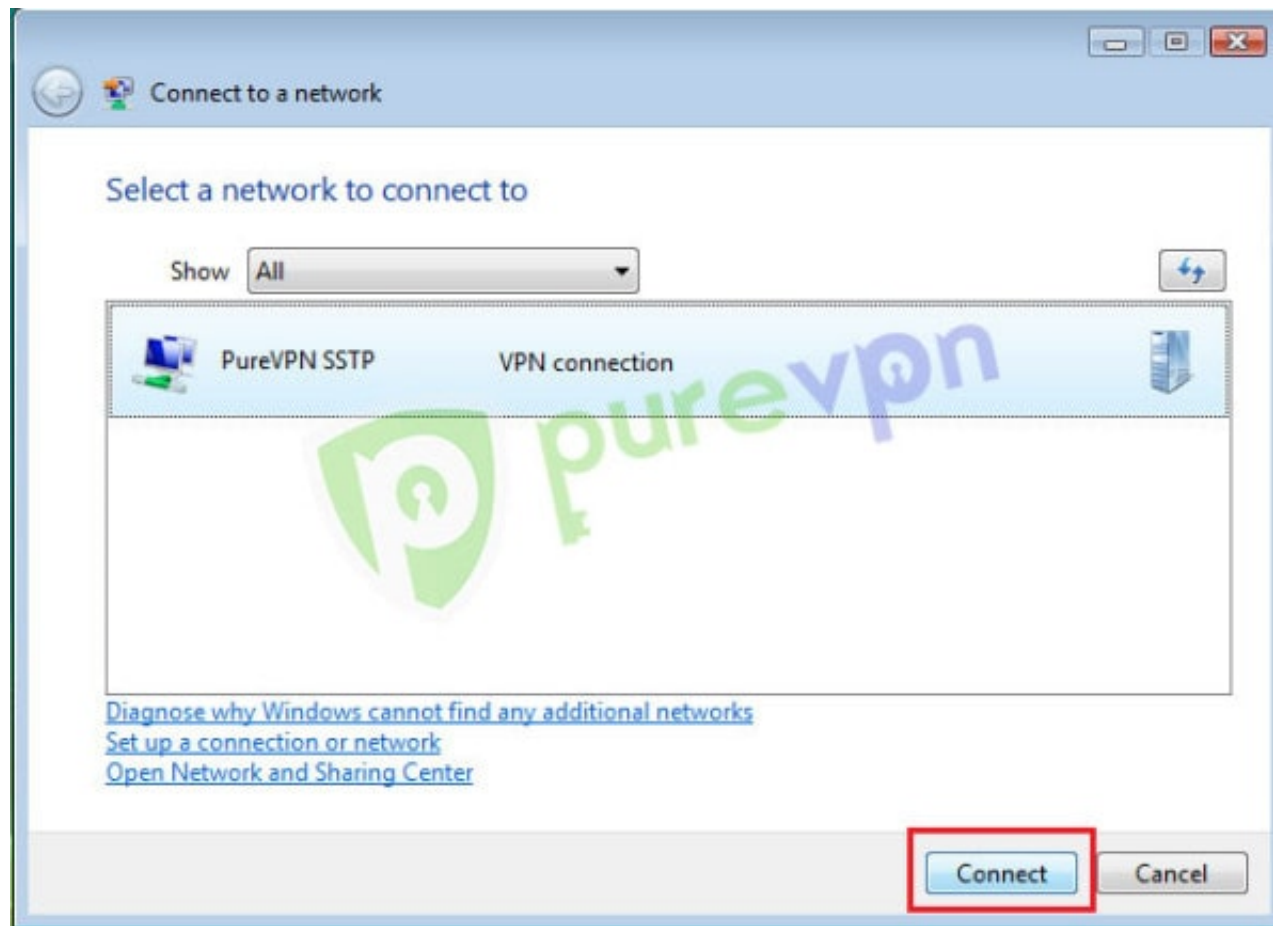
PureVPN Support

Solution of Your Problems

<https://support.purevpn.com>



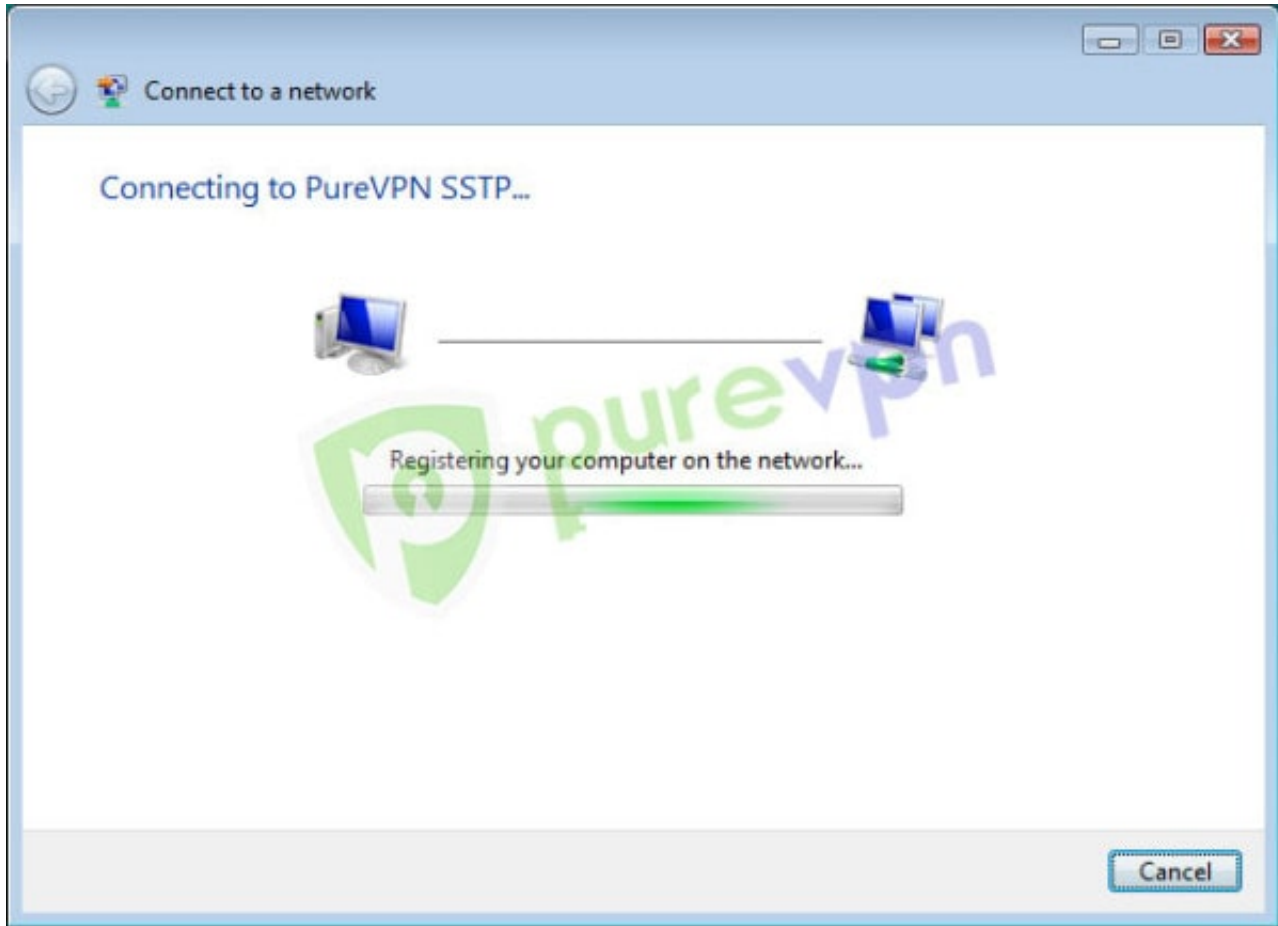
16 Click on "Connect"



17 Click on **“Connect”** again



18 VPN will establish after account verification



19 VPN is successfully connected

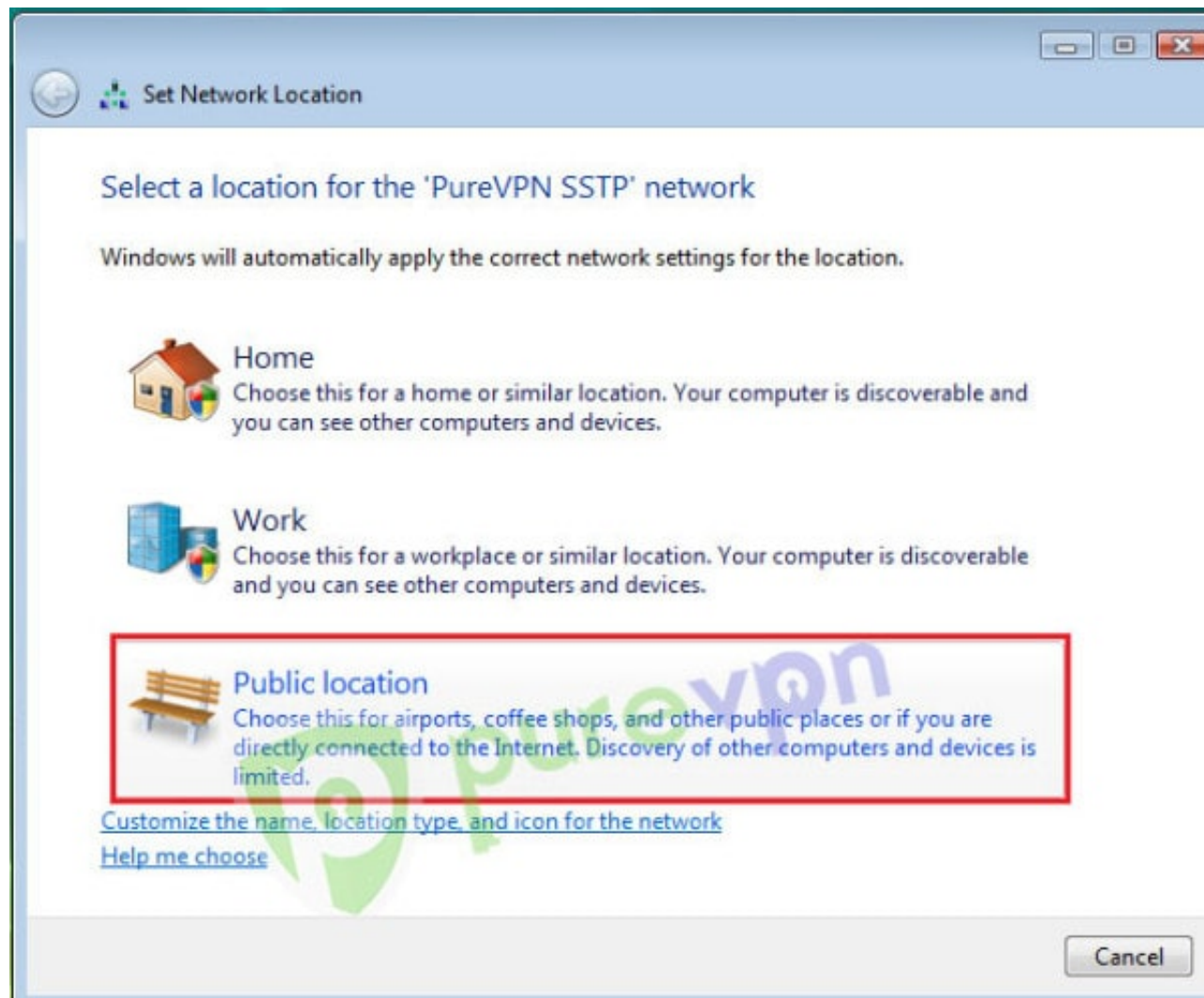
PureVPN Support

Solution of Your Problems

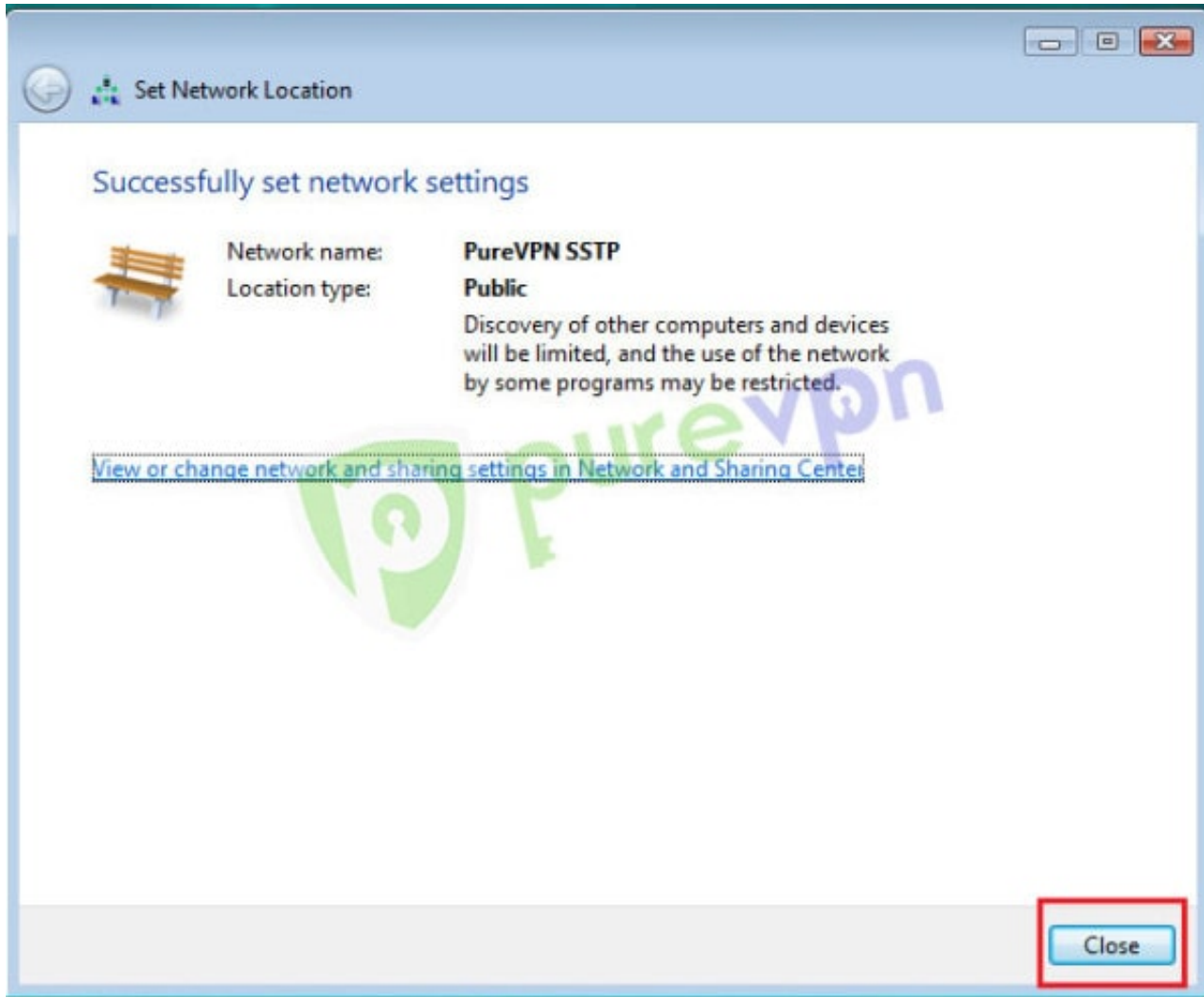
<https://support.purevpn.com>



20 Select Network as **“Public”**



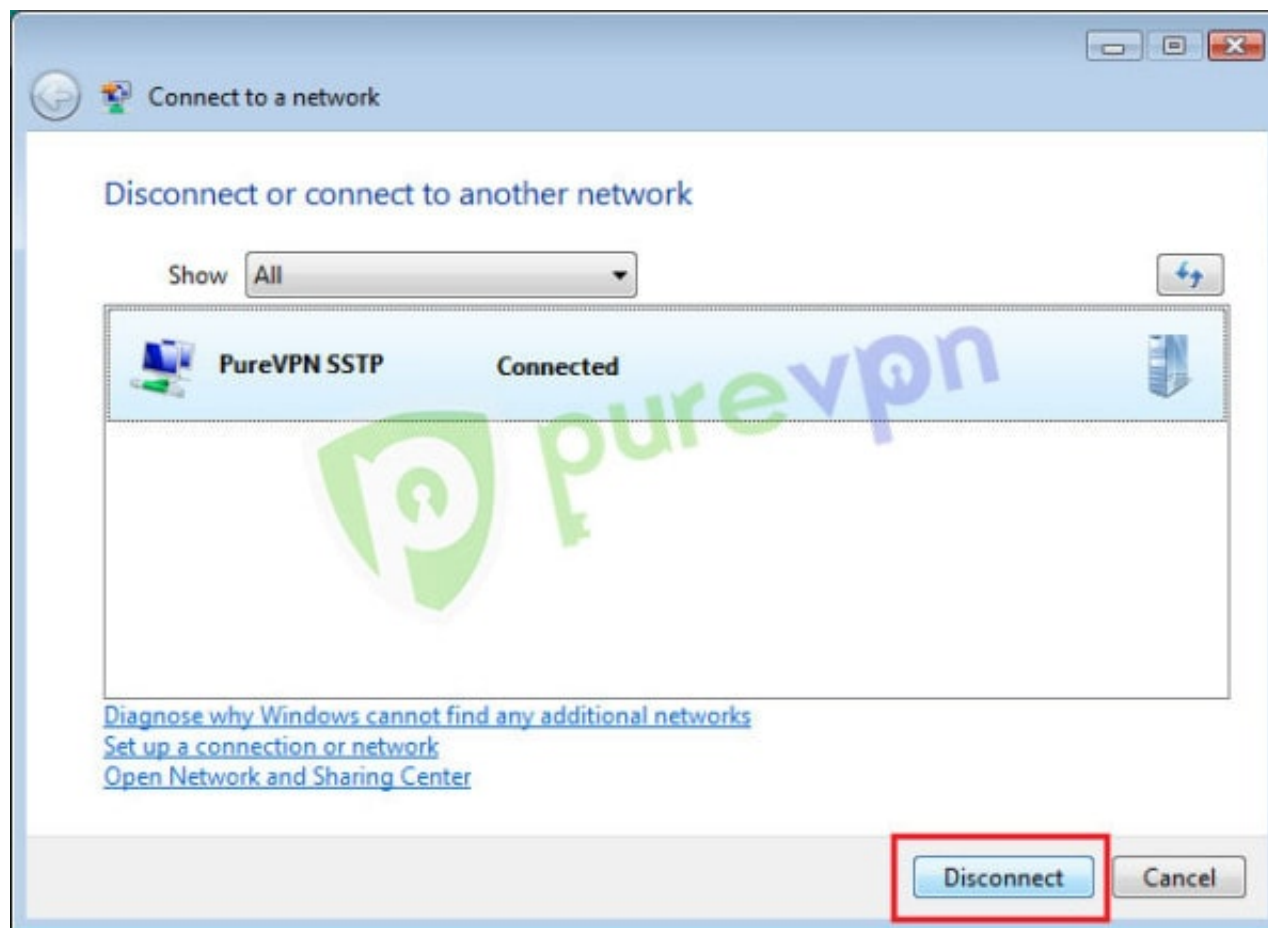
21 Click on Close and **Enjoy the Freedom!!!!!!!**



22 To disconnect VPN. Click on **Lan / Wifi icon** from system tray and click on **“Connect or Disconnect”**



23 Click on “**Disconnect**”



Having Trouble Connecting?

If you're still unable to connect, then please check the most common errors and their solutions

Error 868

[Solution](#)

Error 800, 806, 807, 809

[Solution](#)

Error 720

[Solution](#)

Error 691

[Solution](#)

Error 647

[Solution](#)

Please use the **comment box** for your suggestions & feedback. For additional help, please submit [support ticket](#) with errors and screen shots (if possible) or contact our 24/7 live chat.