

How to Setup PureVPN Manually on Windows XP (L2TP) ?

NOTE

Starting June 15th, 2021, PureVPN will discontinue offering support for PPTP, L2TP, and SSTP protocols on the majority of VPN locations.

However, at the popular request of our users, we will continue to support the following locations for users to connect using PPTP, L2TP, and SSTP protocols:

Germany: de1.pointtoserver.com

Netherlands: nl1.pointtoserver.com

United Kingdom: ukl1.pointtoserver.com

United States: usil1.pointtoserver.com

United States: ustx1.pointtoserver.com

United States: usca1.pointtoserver.com

United States: usfl1.pointtoserver.com

United States: usny1.pointtoserver.com

United States: uswdc1.pointtoserver.com

Australia: au-sd1.pointtoserver.com

Things to Consider:

Before you begin, please make sure that:

- You have a working internet connection
- Windows Supported Device.
- A Premium PureVPN account (If you haven't bought yet click [here](#) to buy)

Find your VPN credentials for manual configuration.

- Login to the PureVPN [member area](#)

PureVPN Support

Solution of Your Problems

• Once logged in go to Account & Billing section.
<https://support.purevpn.com>

- On Account and Billing section click on drop-down icon

- Click on Show/Update VPN password

- Note down your PureVPN username and click on Eye icon to make your password visible and use it in the manual configuration.

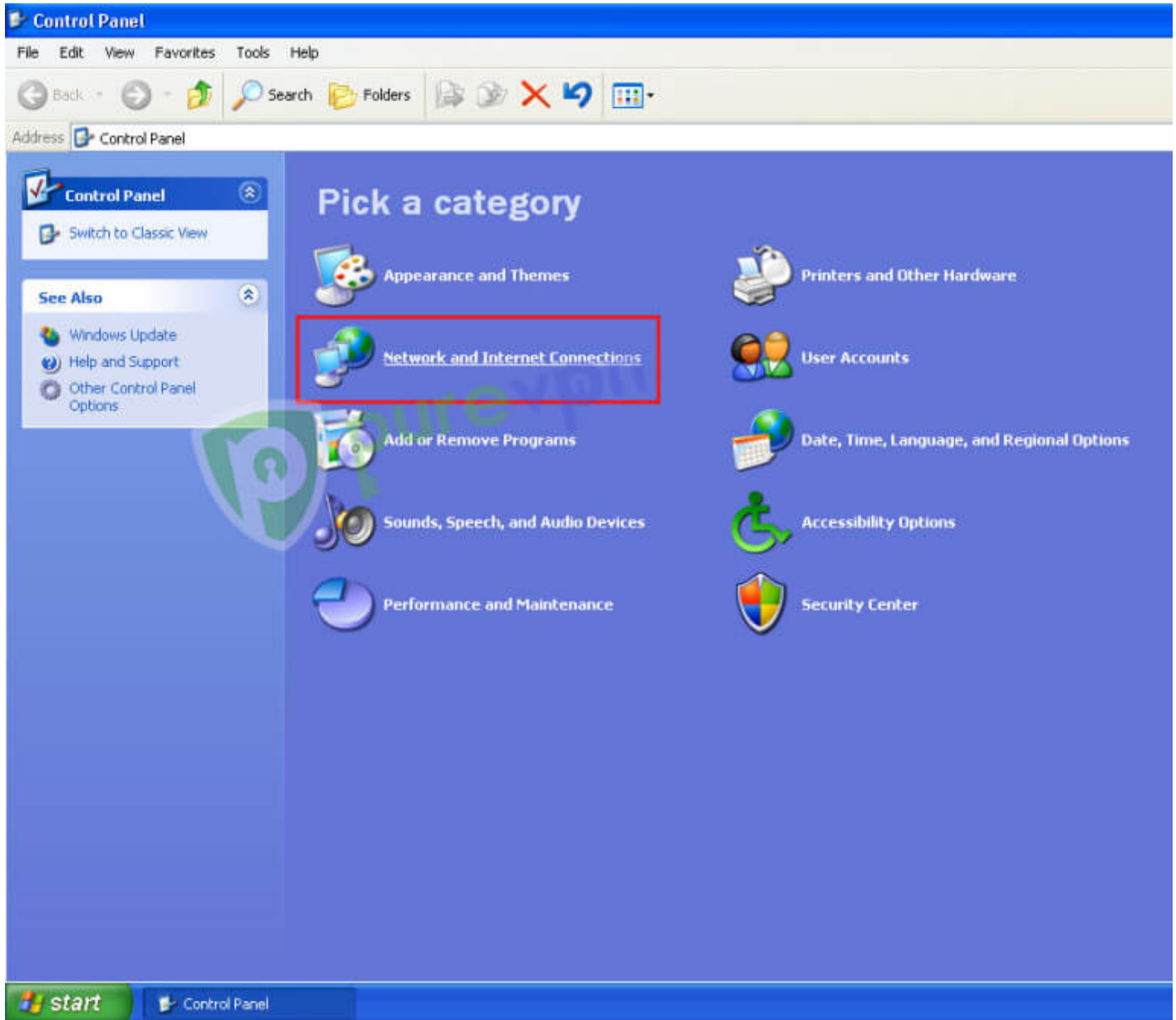
How to connect PureVPN manually on Windows XP.

You can watch the following video for Step by Step Configuration of PureVPN on Windows XP L2TP.

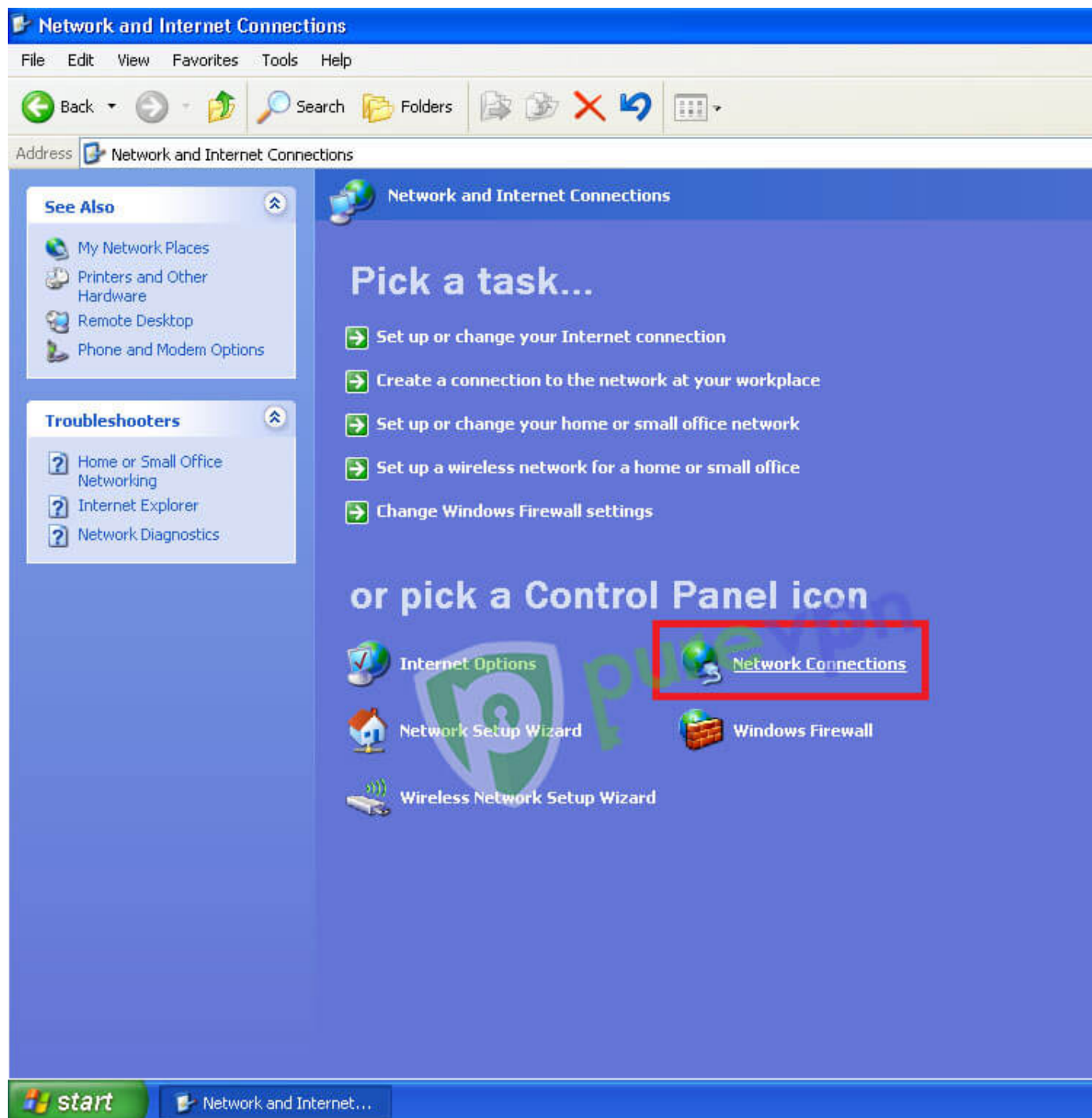
1 Click on “Start” and go to “Control Panel”



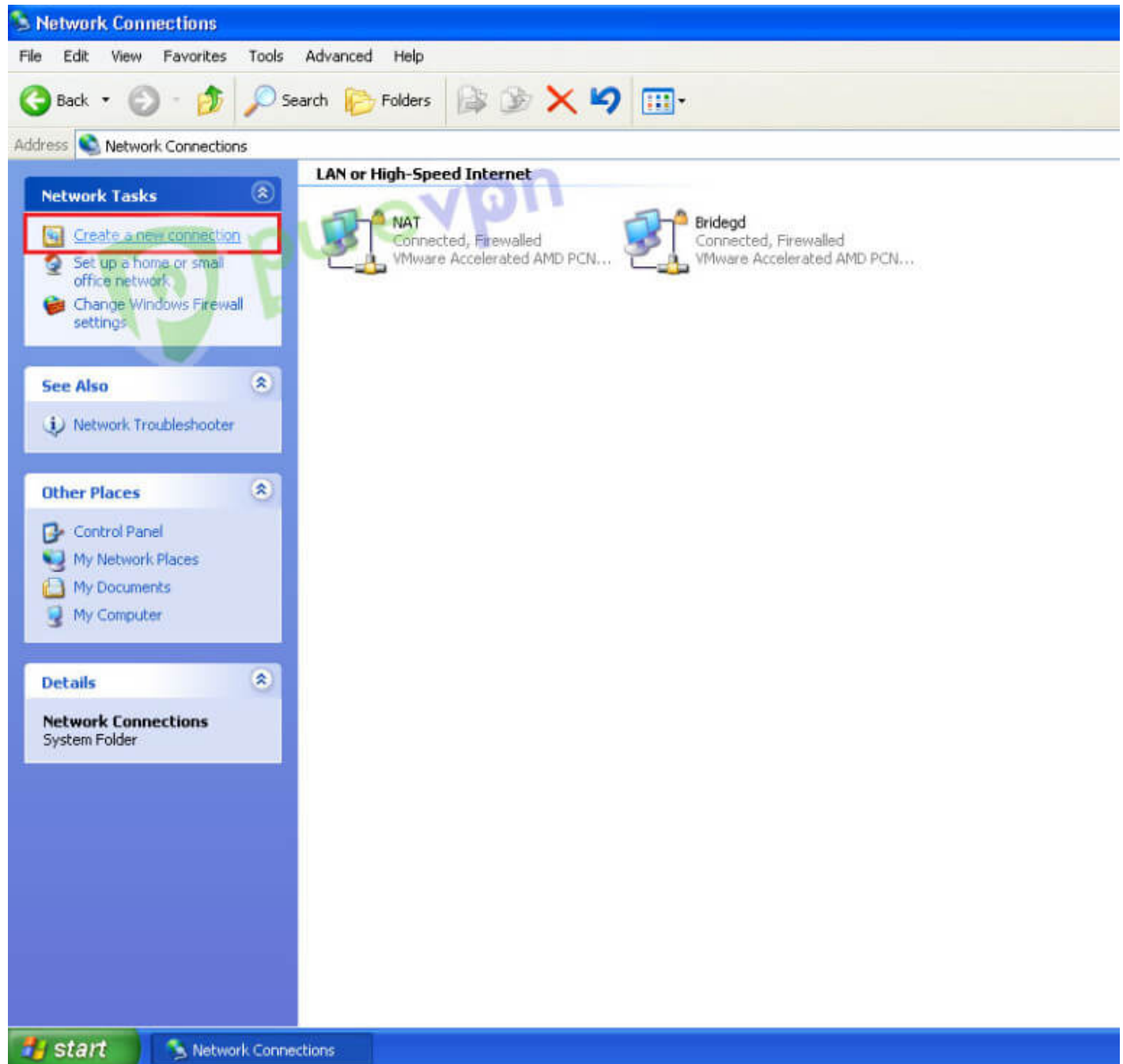
2 Click on “Network and Internet Connections”



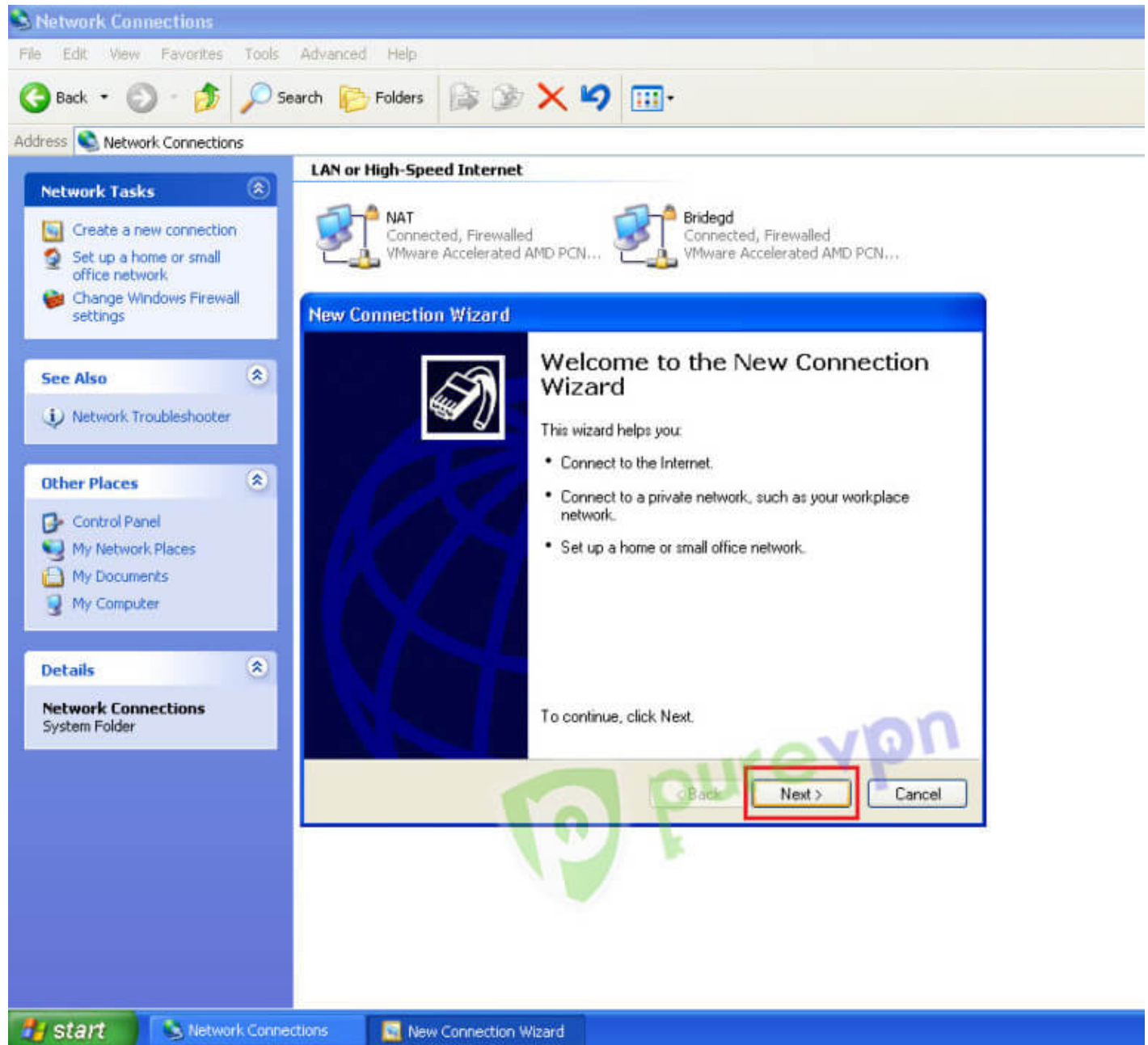
3 Click on “Network Connections”



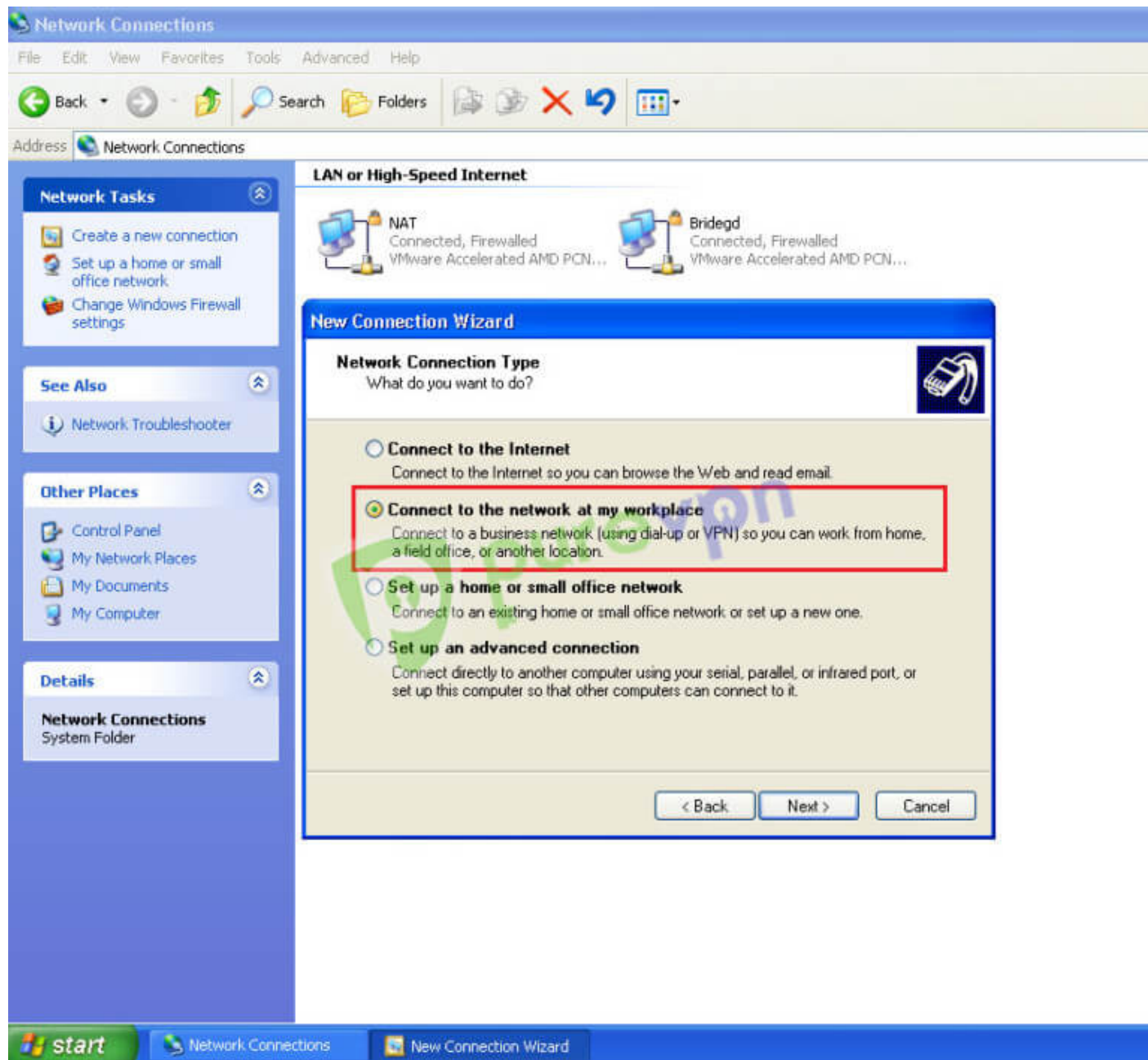
4 Click on "Create a new connection"



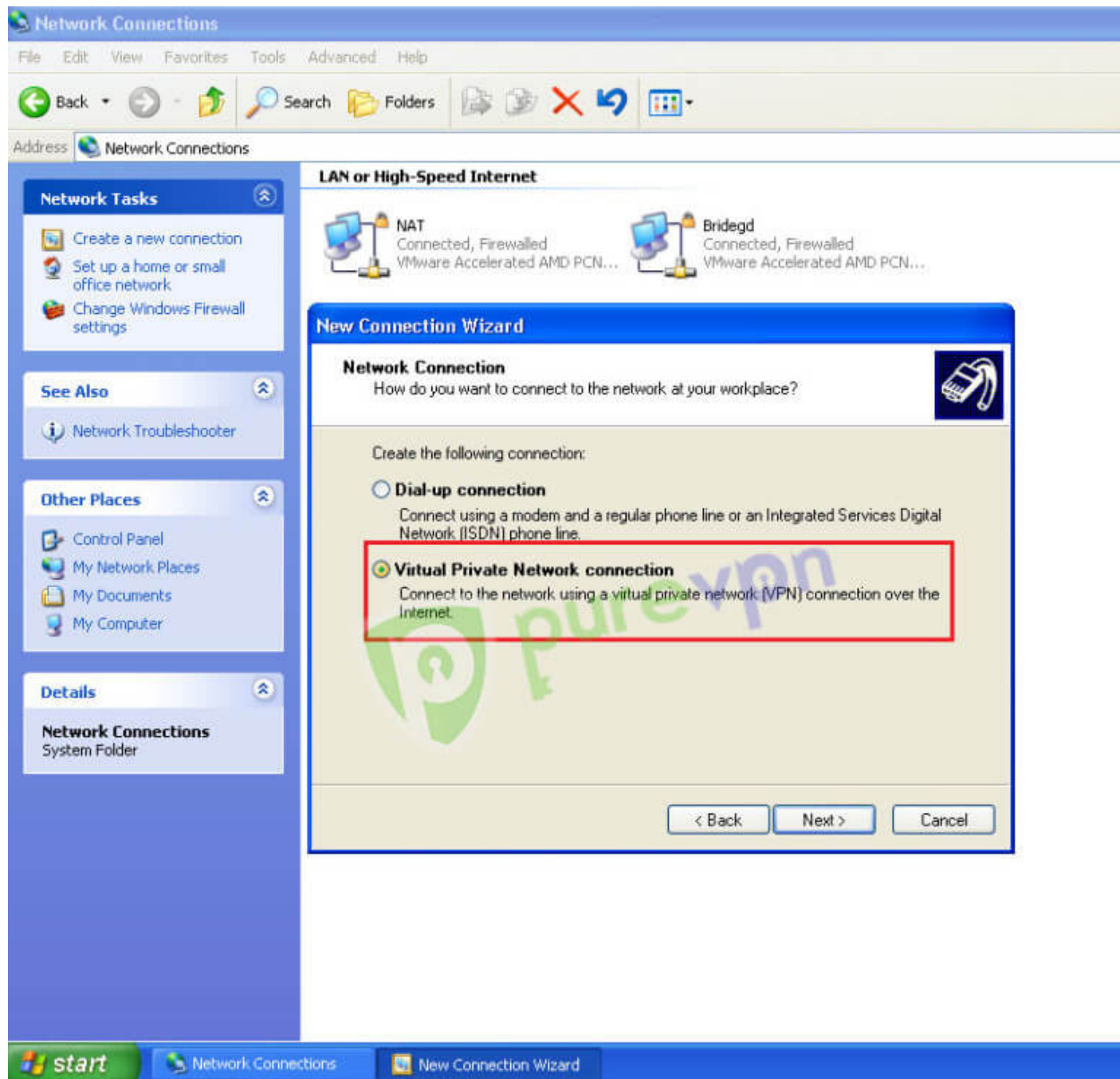
5 Click on "Next"



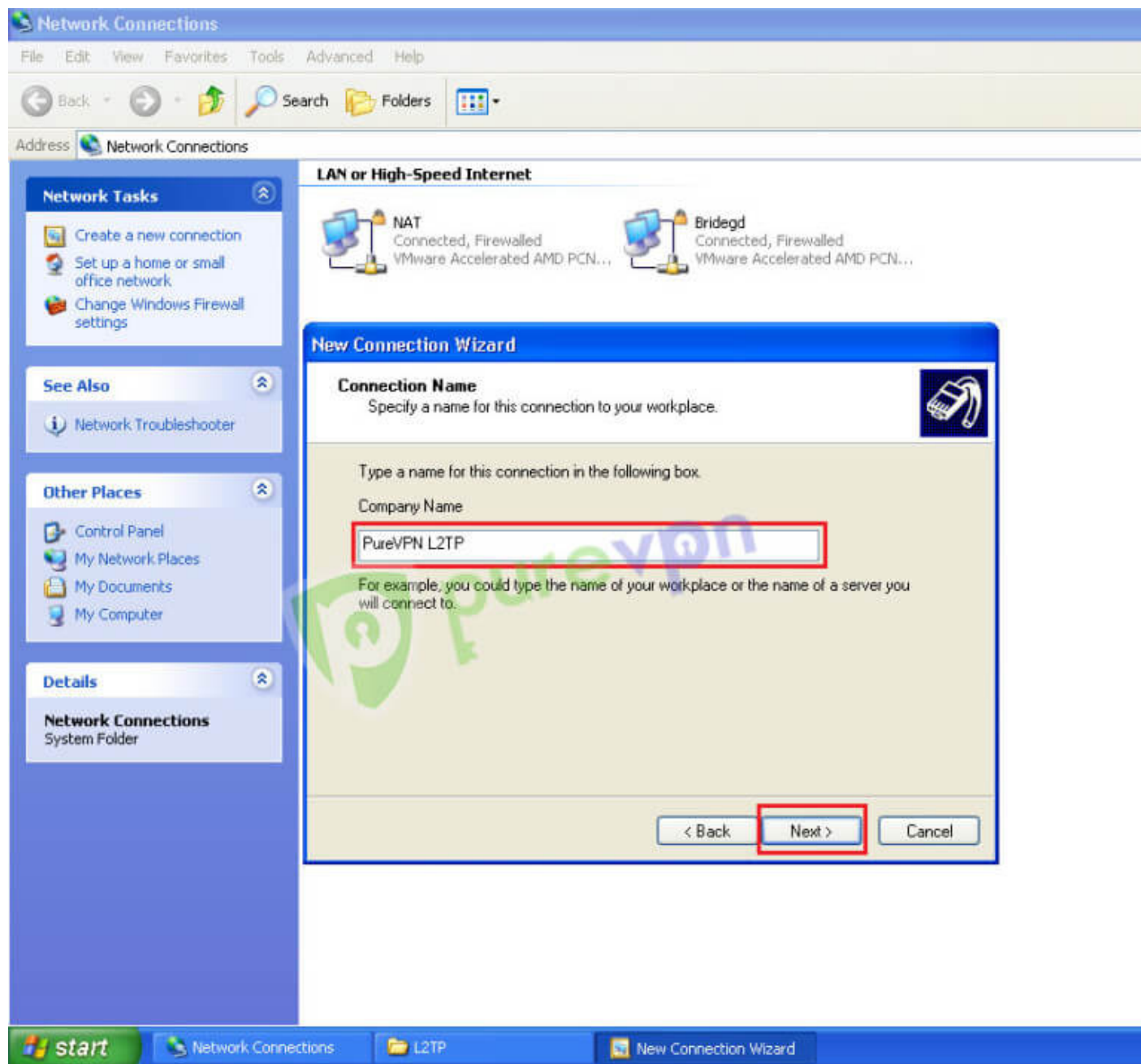
6 Select "Connect to the network at my workplace" and click "Next"



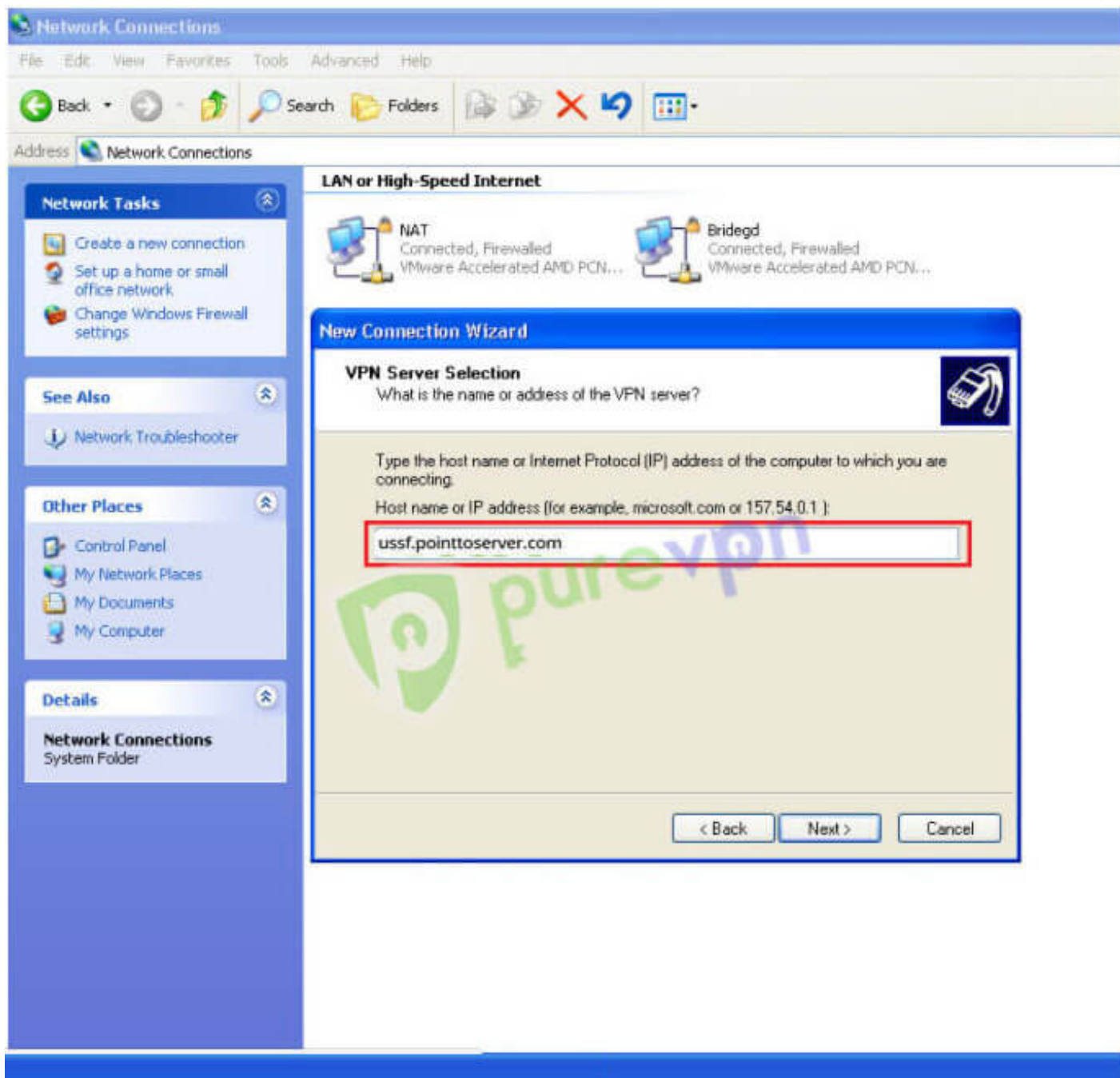
7 Select "Virtual Private Network connection" and click "Next"



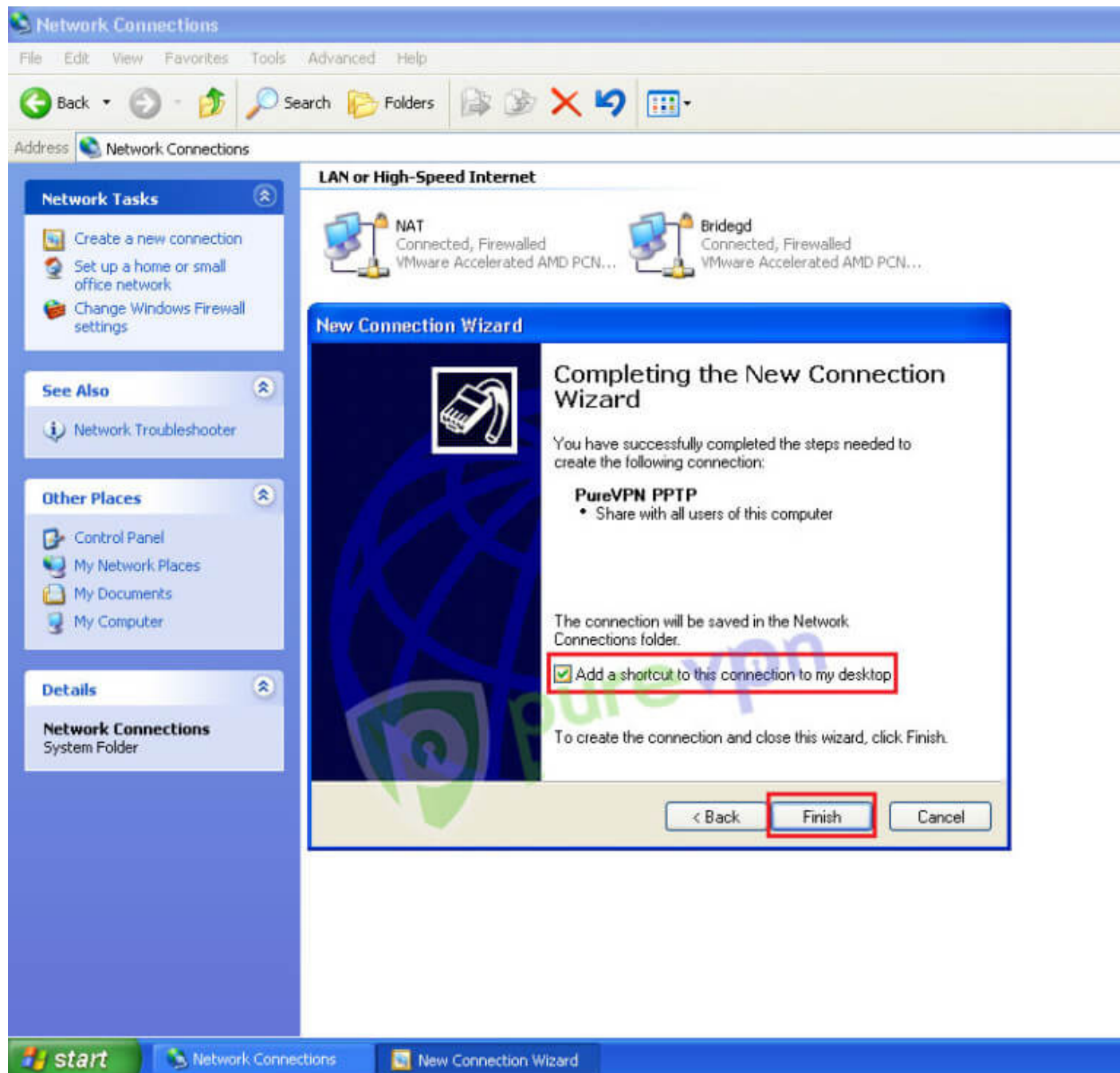
8 Insert "PureVPN L2TP" as Company Name and click "Next"



9 Insert the desired server: Please refer to the server address shared in the above note.

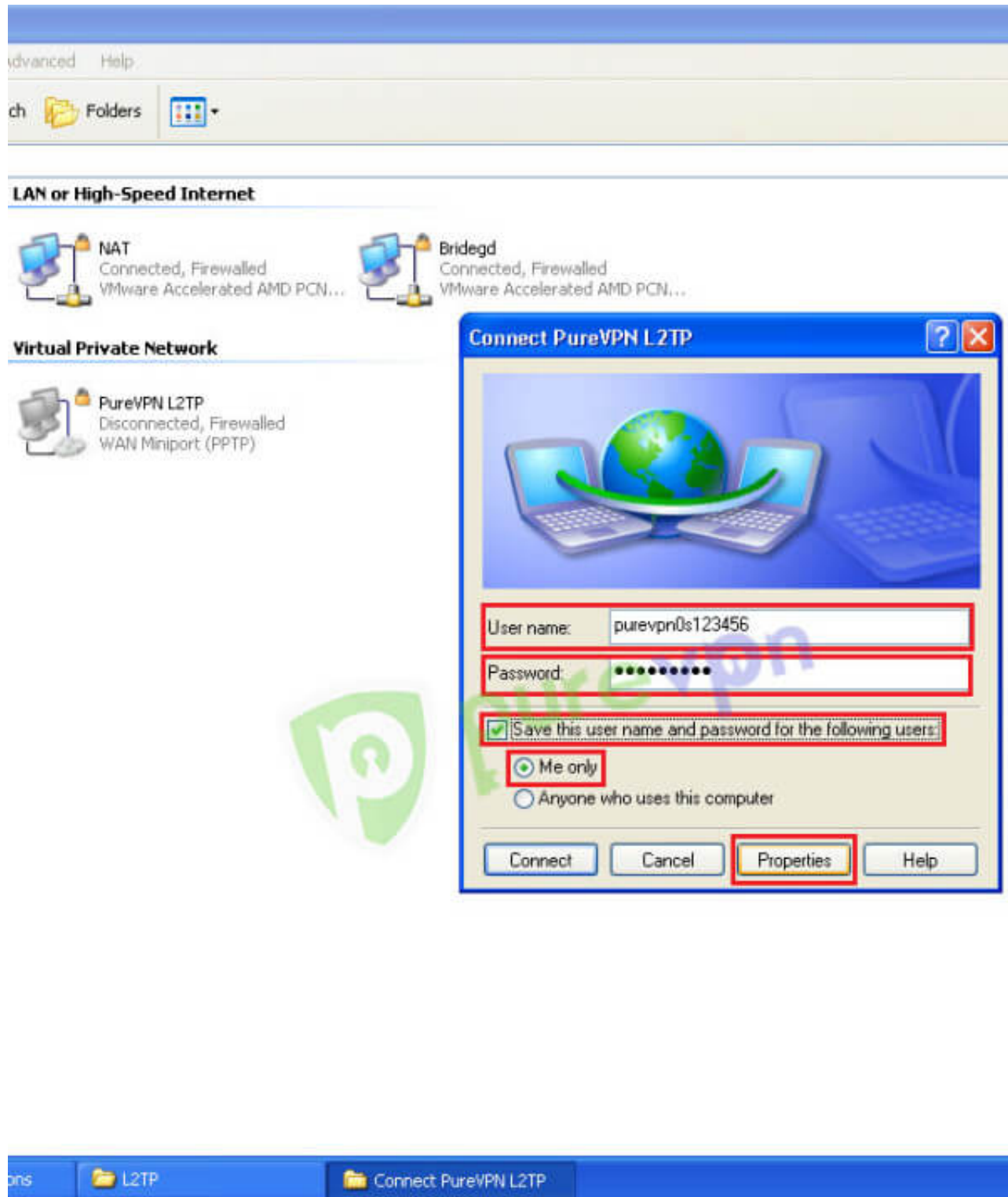


10 Select “Add a shortcut to this connection to my desktop” and click Finish

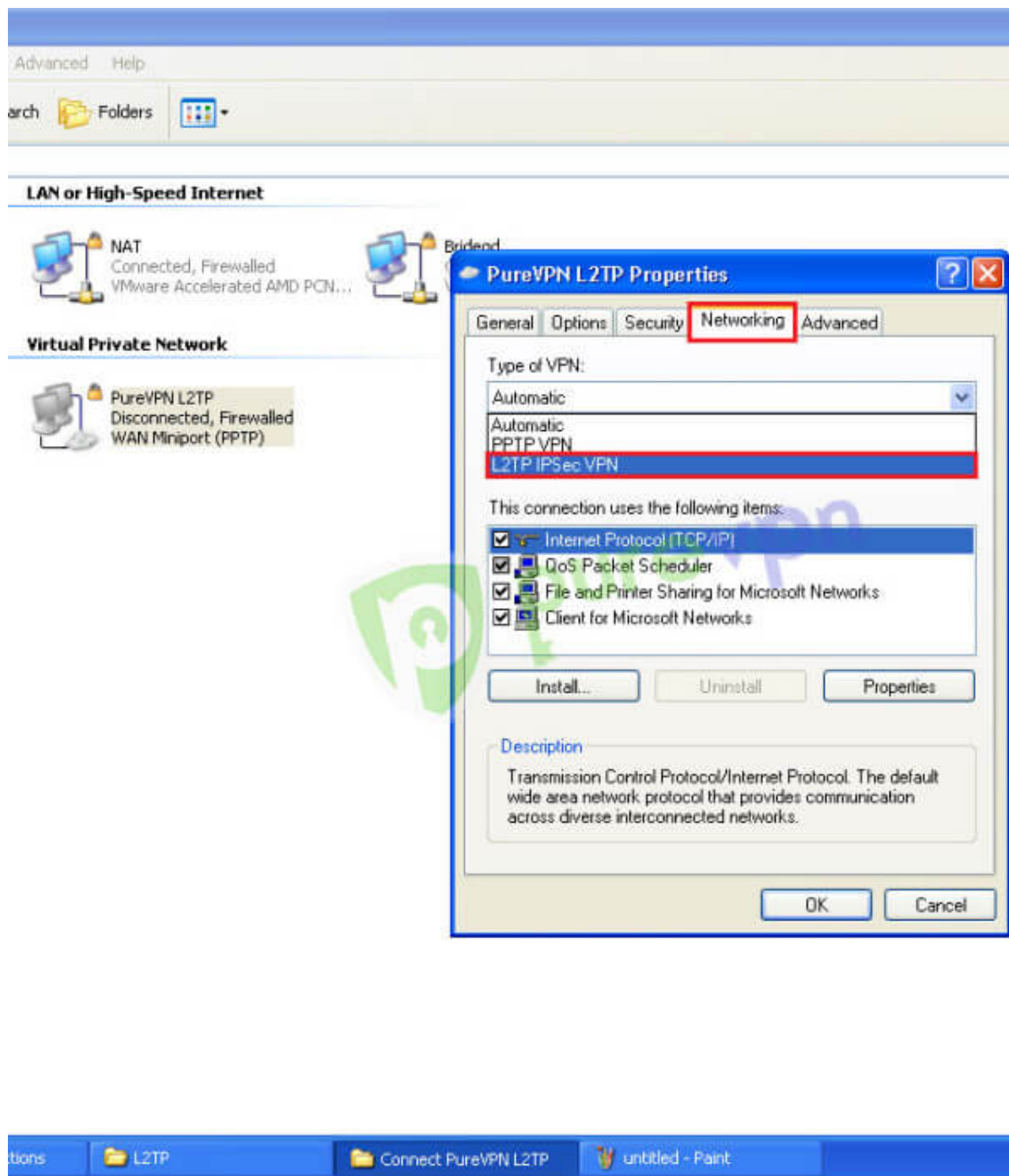


11 Insert the following info:

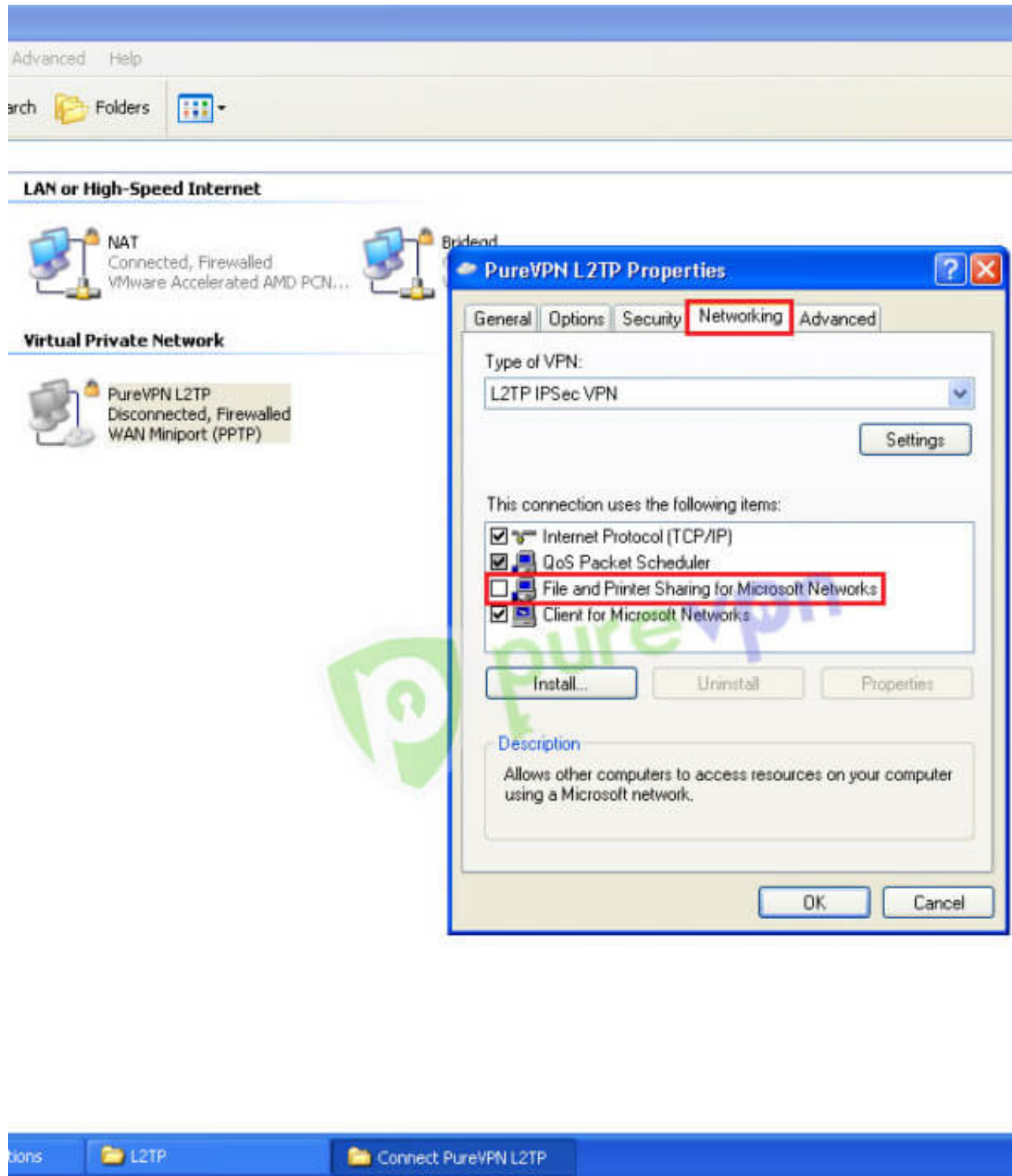
- Insert Username and Password provided by PureVPN. (Important Note: Your email address is not your VPN login username.)
- Select "Save this user name and password for the following users"
- Select "Me only" or "Anyone who uses this computer"
- Click on Properties



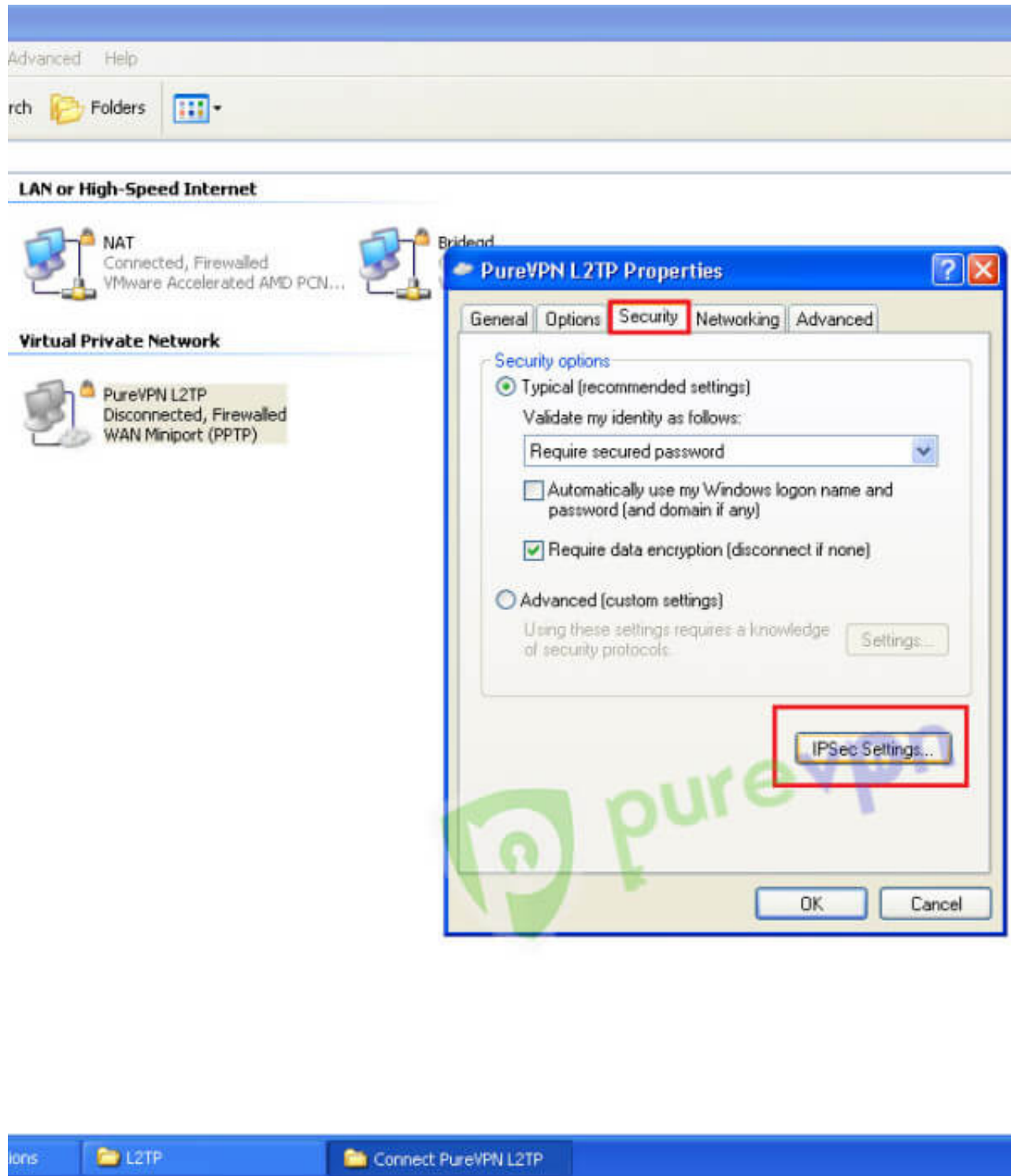
12 Click on “Networking” Tab and select “L2TP IPsec VPN” from drop down menu.



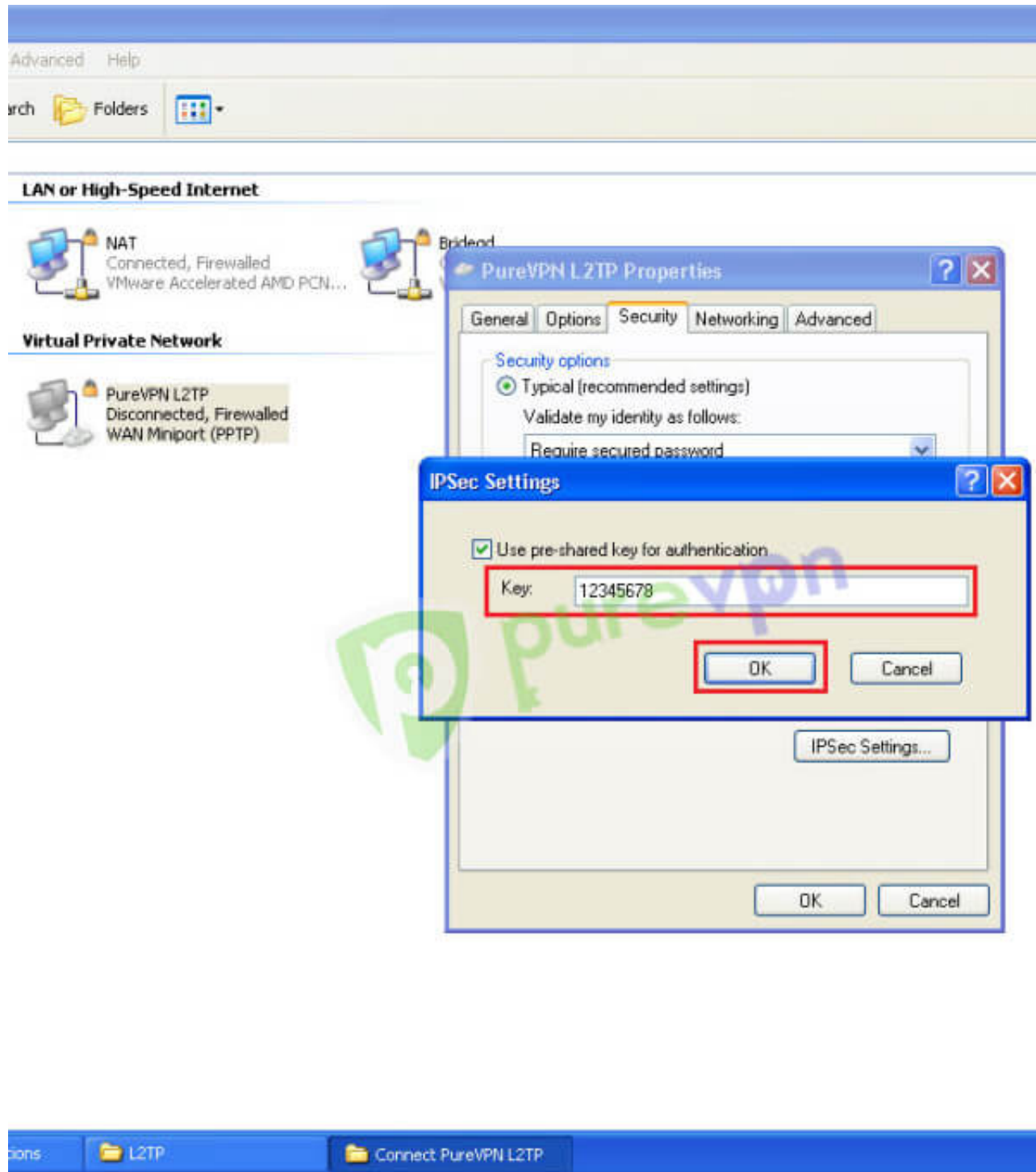
13 Uncheck “File and Printer Sharing for Microsoft Networks” and click on “Security” tab



14 Click IPsec Settings

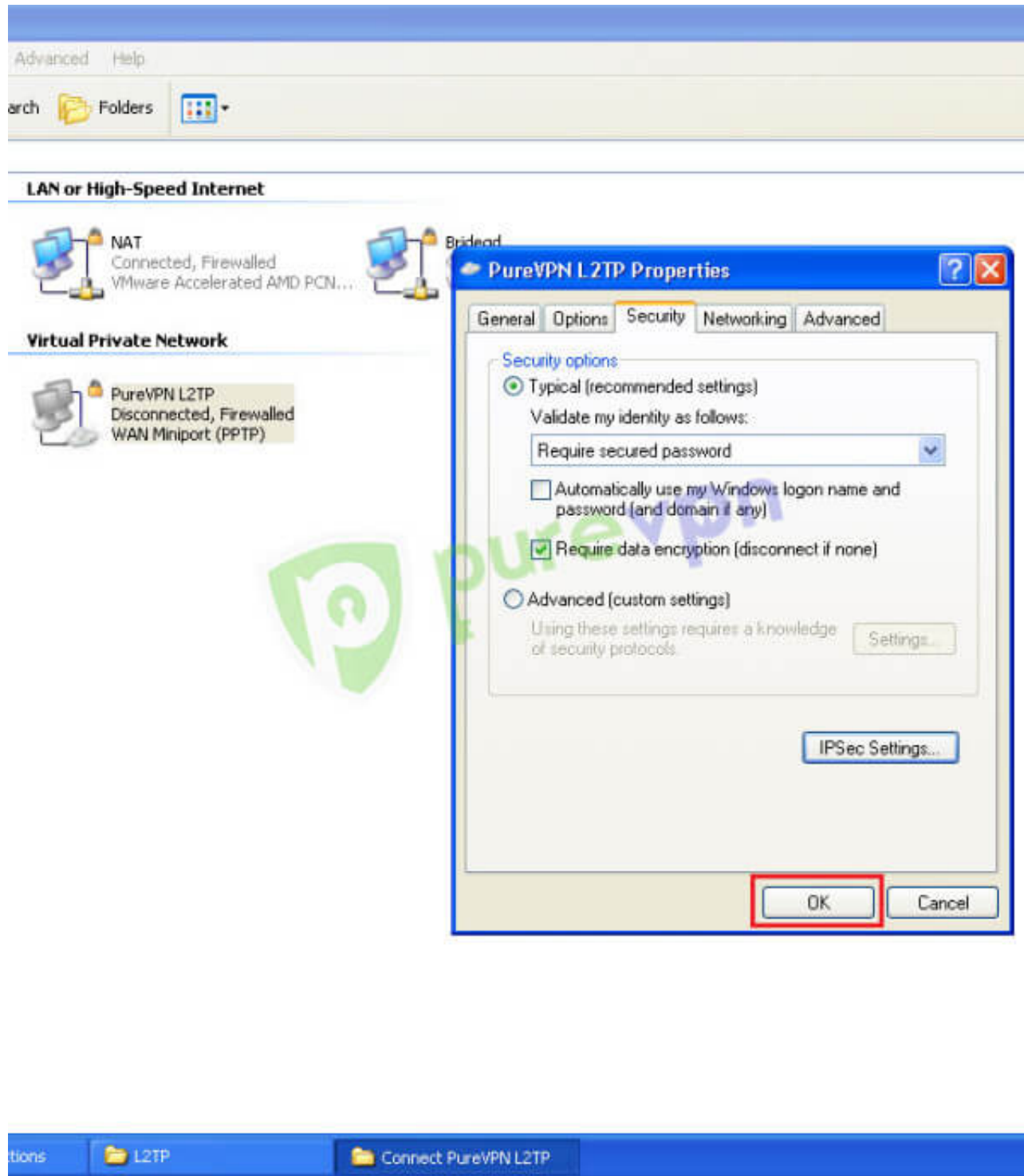


15 Select “Use pre-shared key for authentication”, insert “12345678” in Key box and hit “OK”

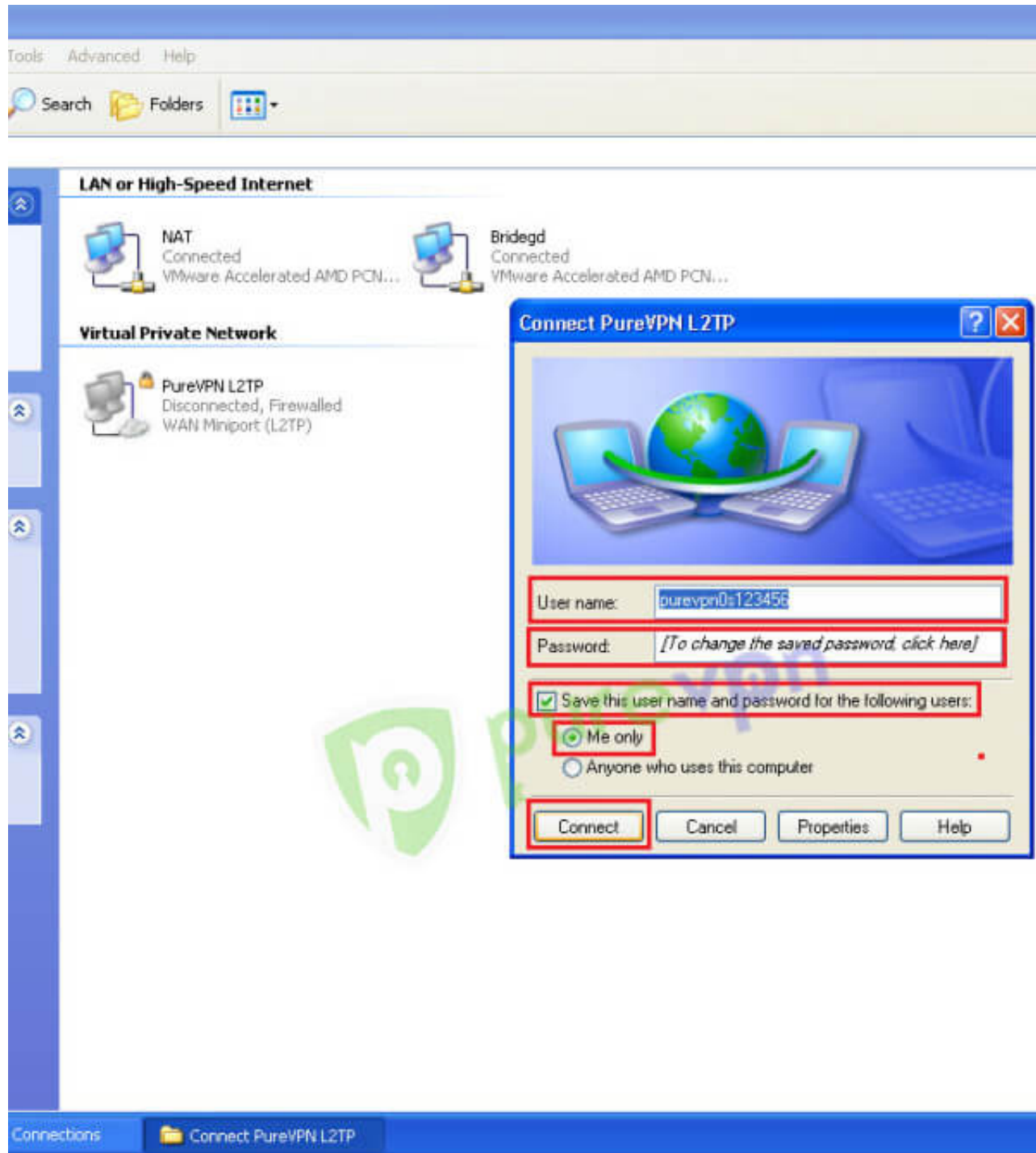


16 Select required data encryption and hit “OK”.

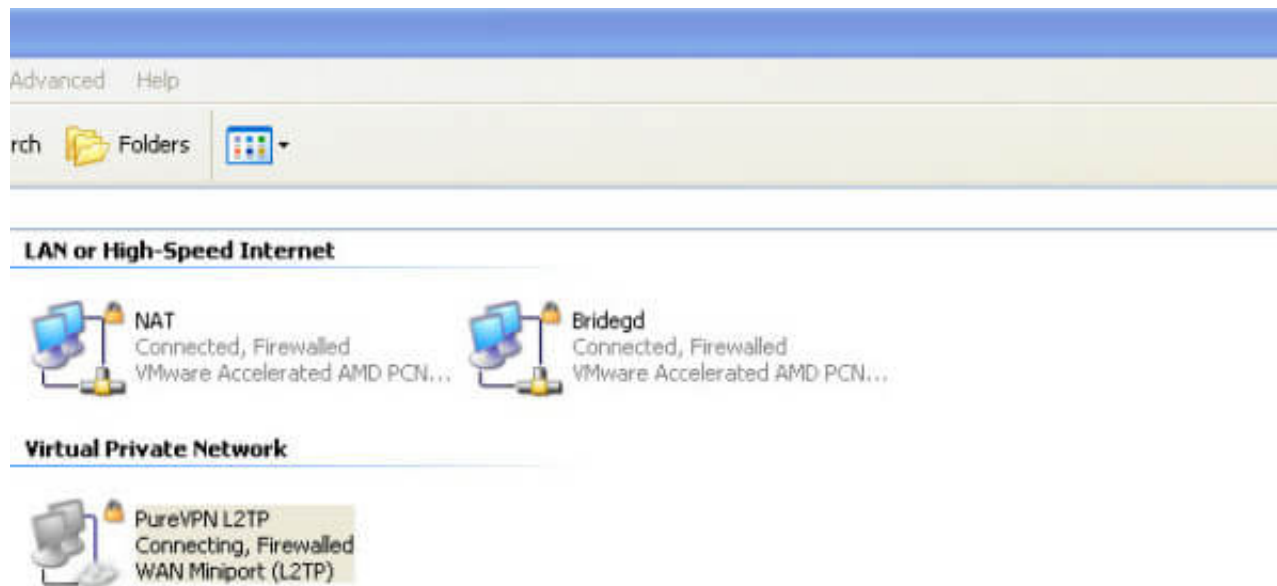
For Streaming purpose uncheck required data encryption.



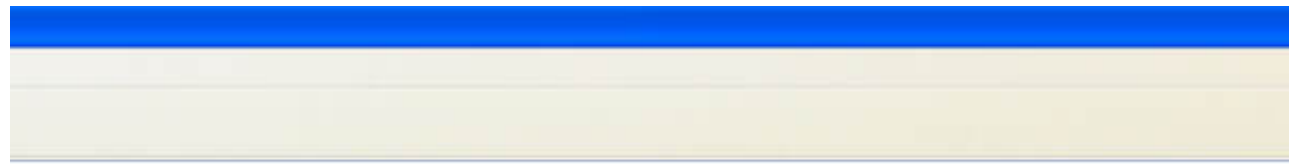
17 Click on “Connect” now



18 VPN connection will be established after username and password verification.



19 You are connected NOW. Enjoy the Freedom ?



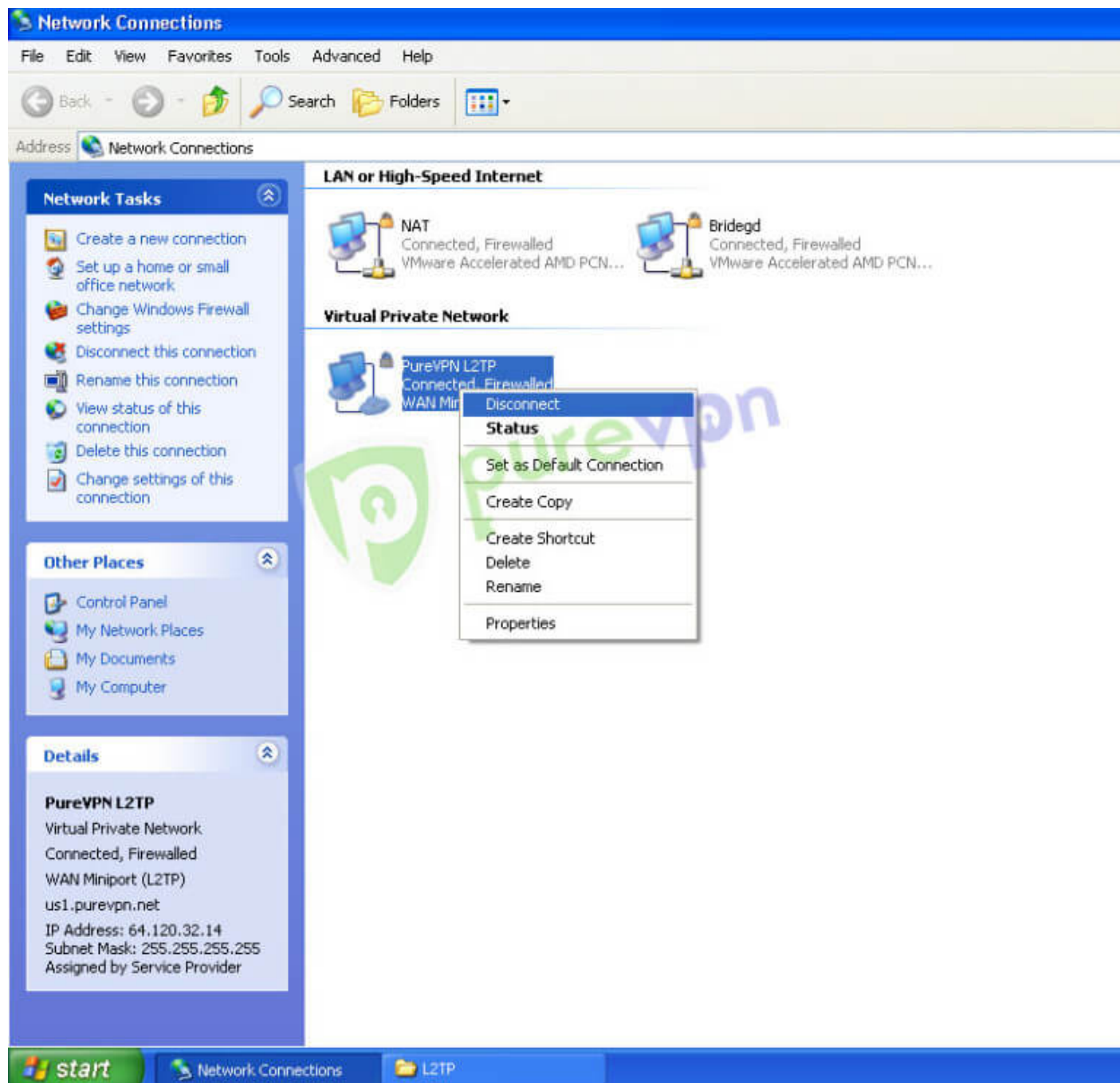
LAN or High-Speed Internet



Virtual Private Network



20 To disconnect VPN, right click on VPN connection and select "Disconnect"



Having Trouble Connecting?

If you're still unable to connect, then please check the most common errors and their solutions

Error 868

[Solution](#)

Error 800, 806, 807, 809

[Solution](#)

Error 720

[Solution](#)

Error 691

[Solution](#)

Error 647

[Solution](#)