

How to Setup PureVPN Manually on Windows 8 (PPTP)?

Things to Consider:

Before you begin, please make sure that:

- You have a working internet connection
- Windows Supported Device.
- A Premium PureVPN account (If you haven't bought yet [click here](#) to buy)

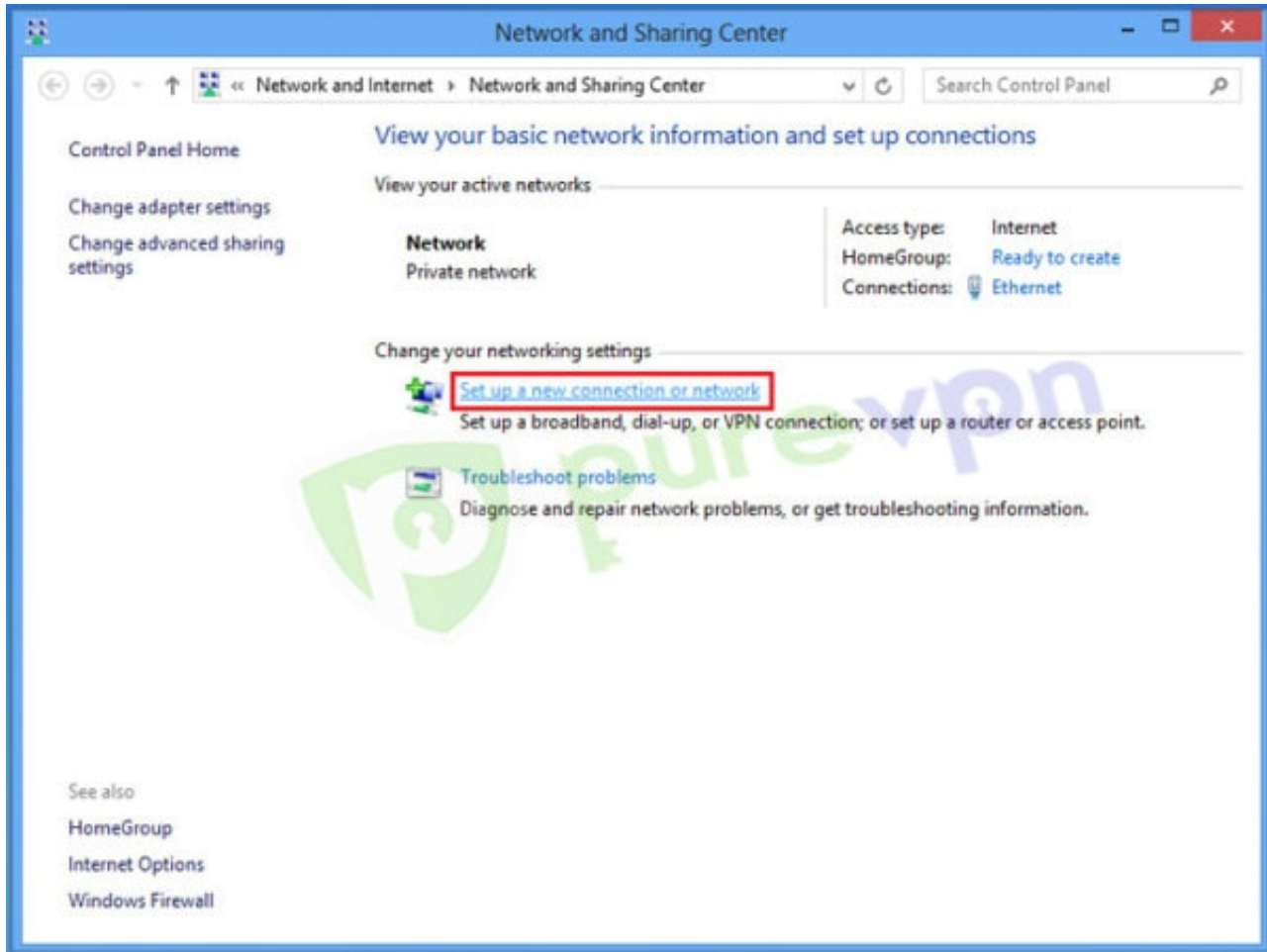
Follow these simple steps to configure PureVPN manually on Windows 8:

Note: We have just launched New PureVPN Windows Software BETA version. If you need guide on BETA version [Click Here](#).

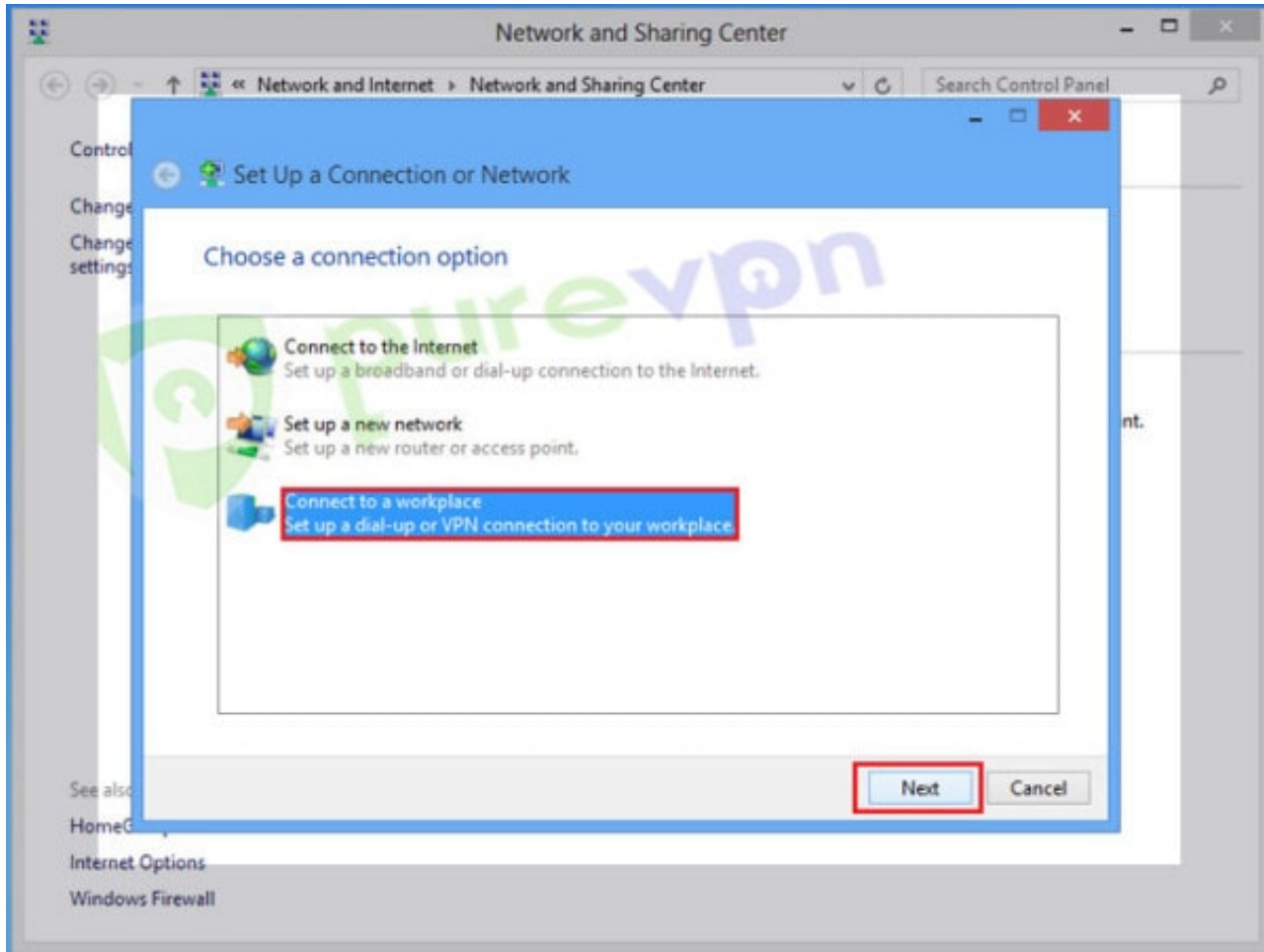
1 Right click on “**Lan / Wifi icon**” from System tray and select “**Open Network and Sharing Center**”



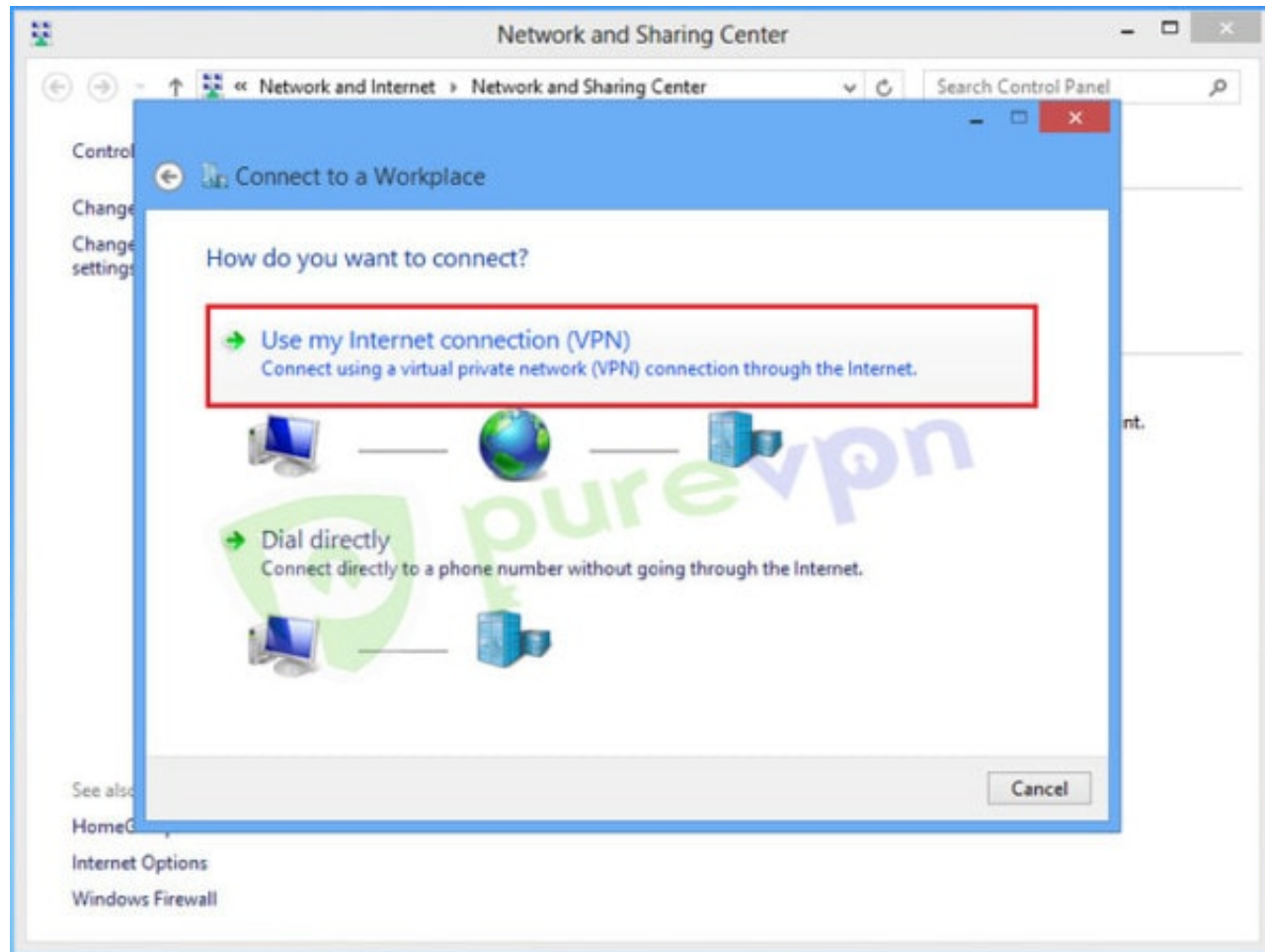
2 Click on “**Set up a new connection or network**”



3 Select **“Connect to workplace”** and click **“Next”**



4 Select “Use my Internet connection (VPN)”



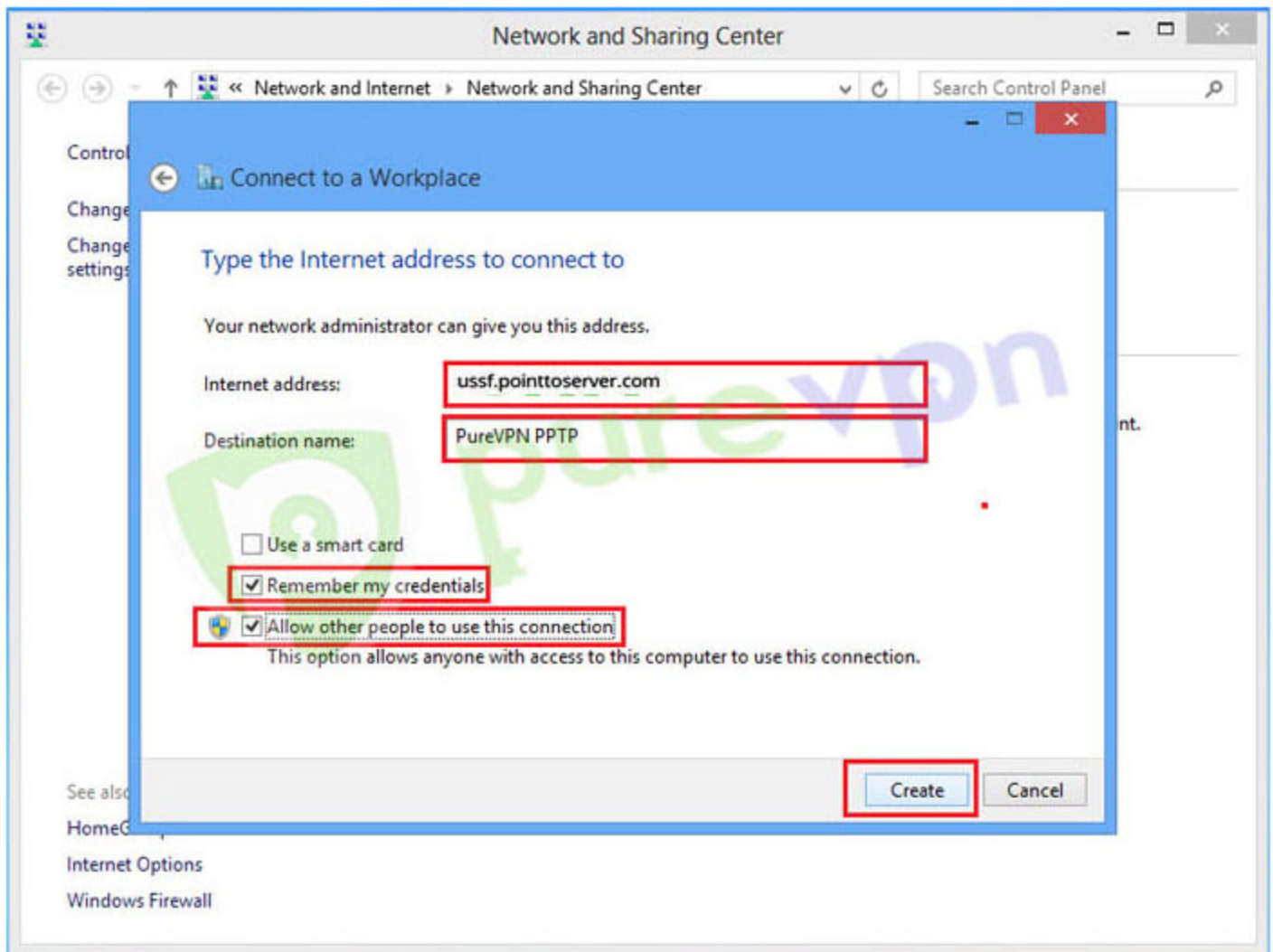
5 Insert the following info:

- Insert **desired server address**. [Click here to get the server list](#)

- Insert **destination name** as PureVPN PPTP or PureVPN US etc
- Select **“Remember my credentials”**

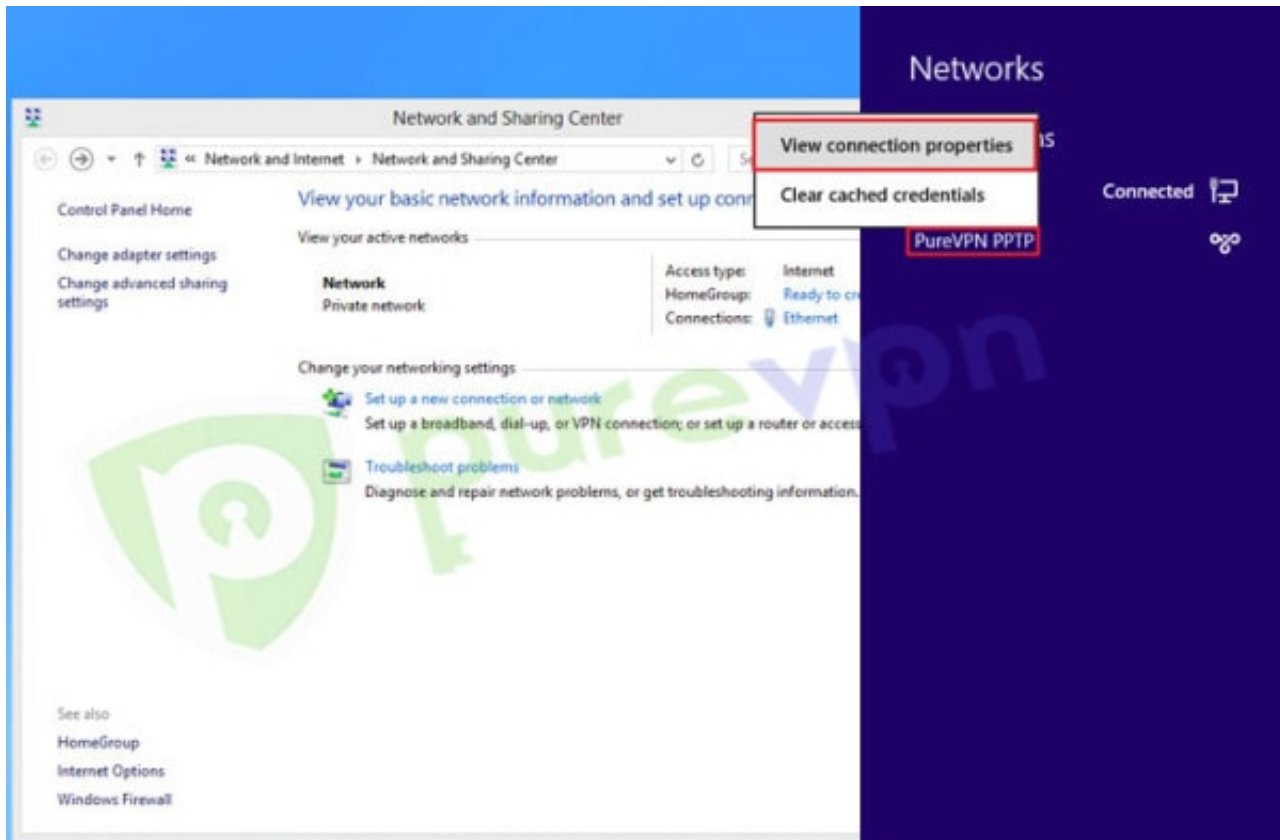
- Select **“Allow other people to use this connection”**

- Click **“Create”**

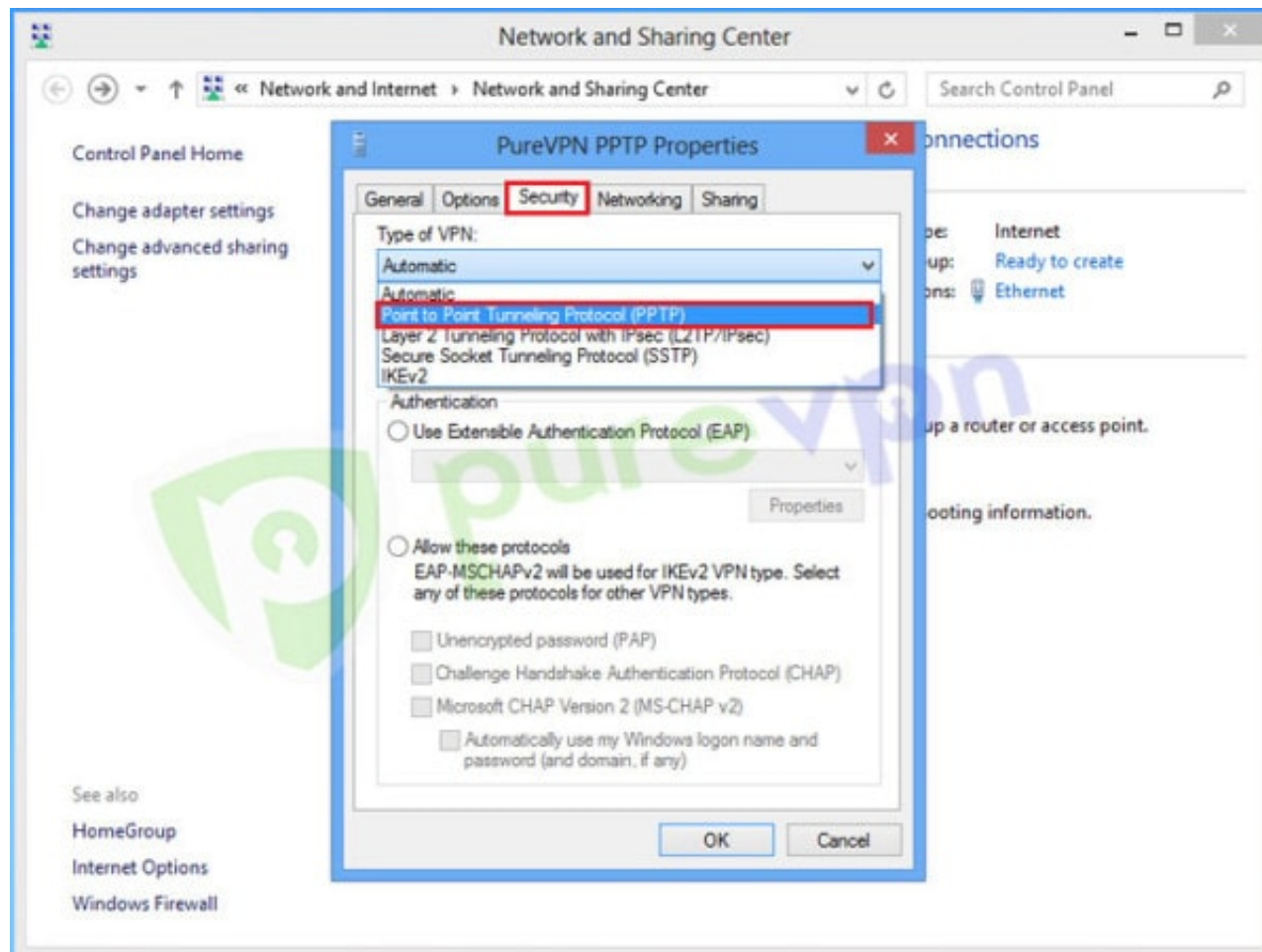


6 Right click on “**PureVPN PPTP**” connection and select “**View connection properties**”

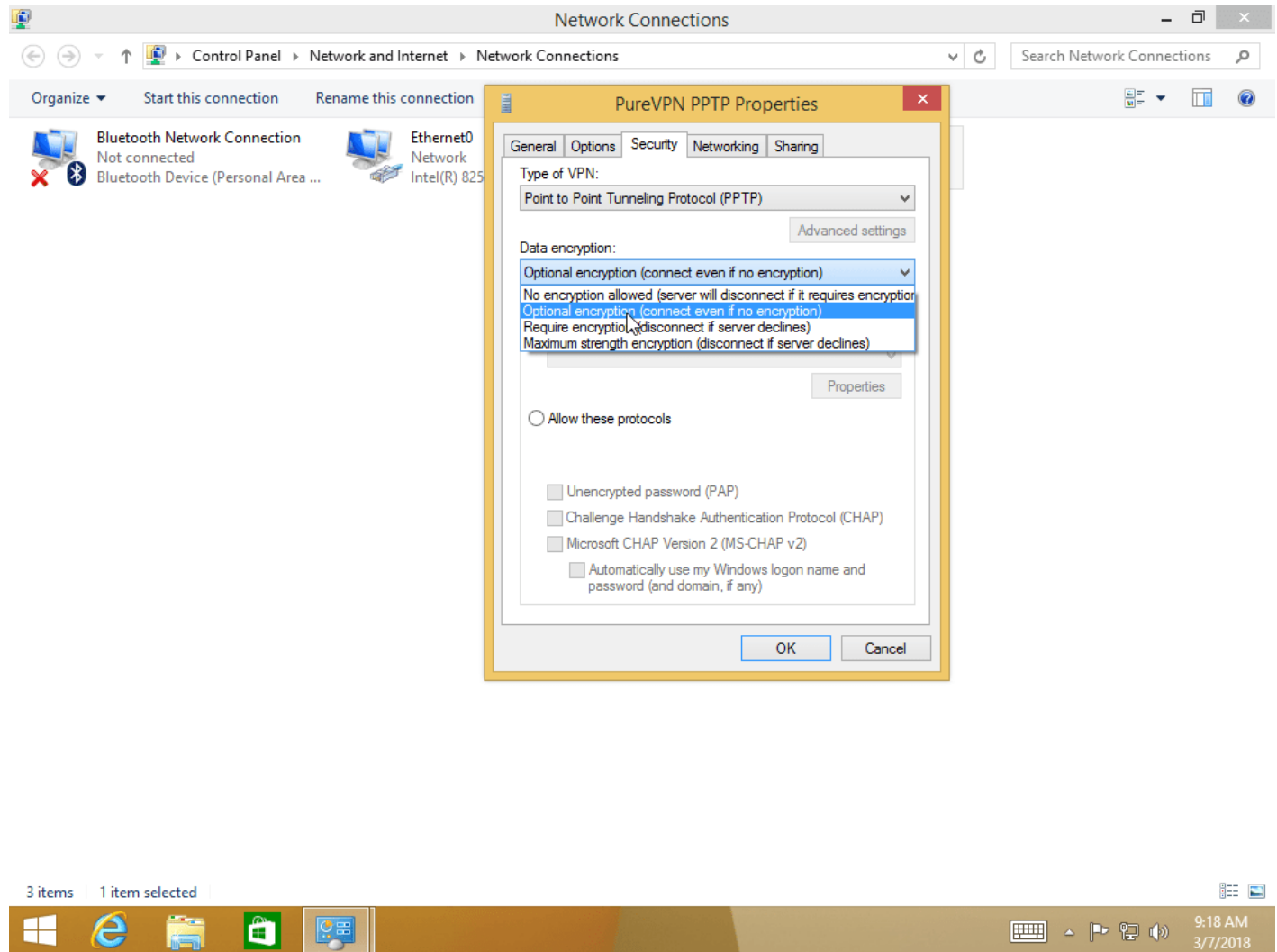
Note: If you are on Windows 8.1, then click on “Change Adapter Settings” from the “Network and Sharing Center”, right click on PureVPN PPTP connection, select Properties



7 Click on Security tab and select “**Point to Point Tunneling protocol (PPTP)**”

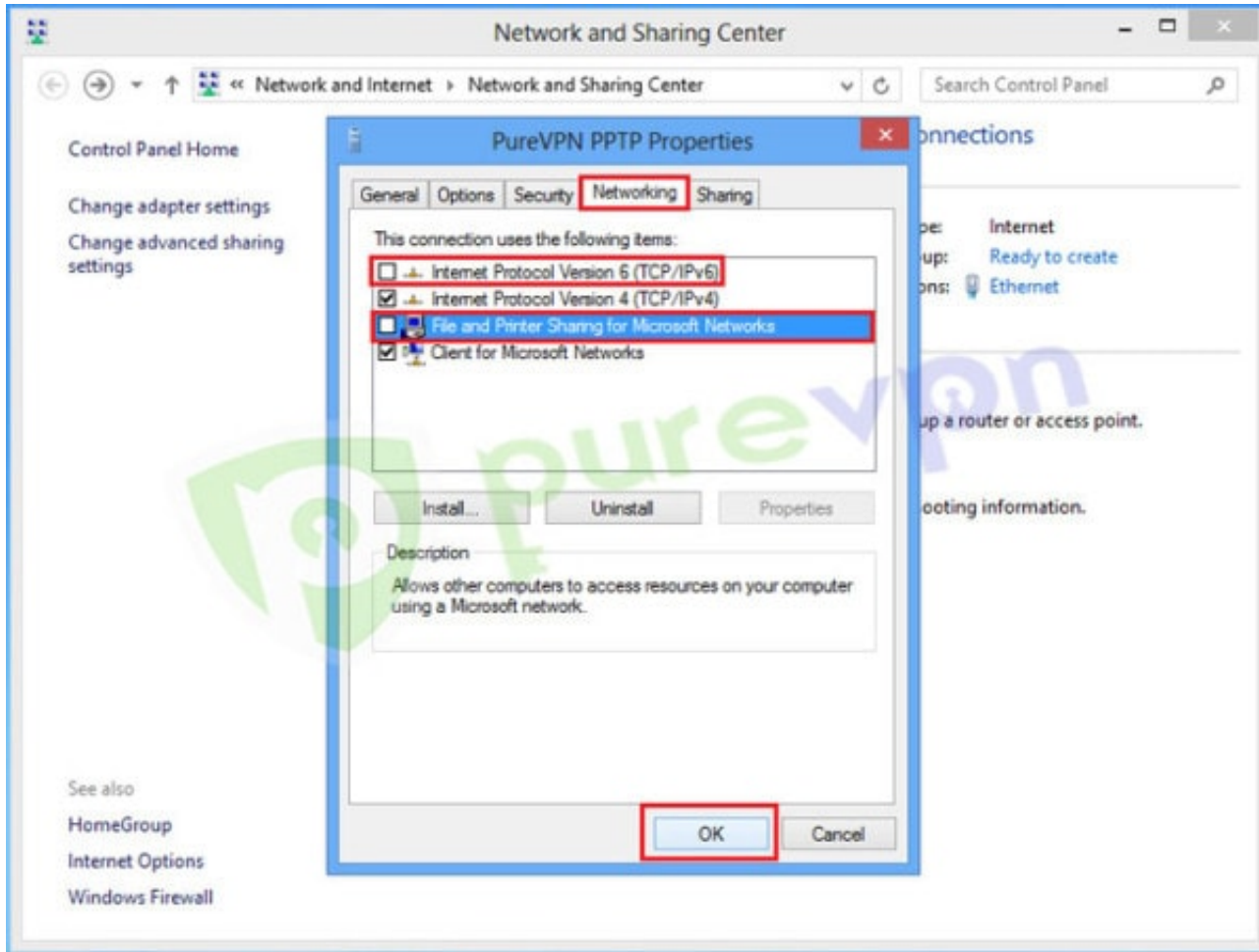


8 Select “Required Encryption” from “Data encryption” drop down menu

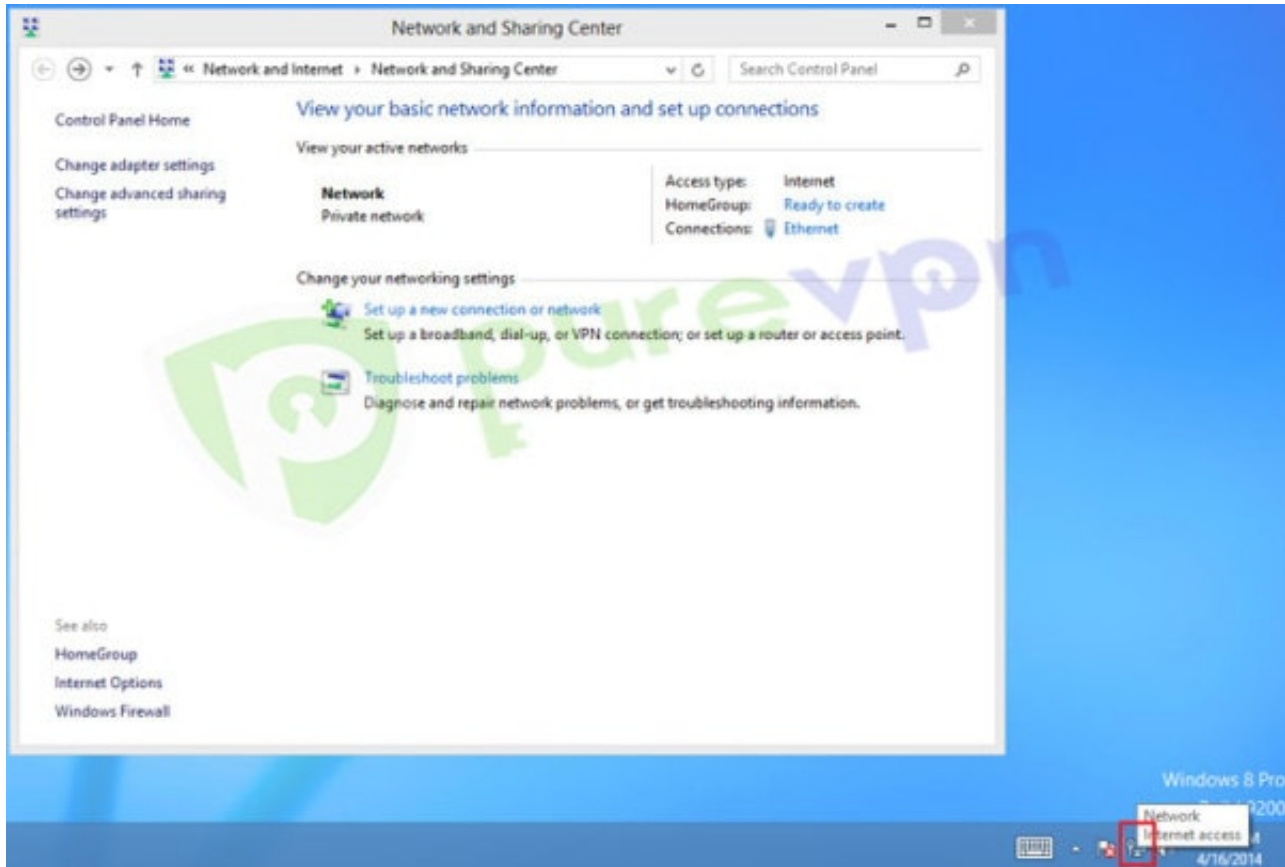


9 Insert the following info:

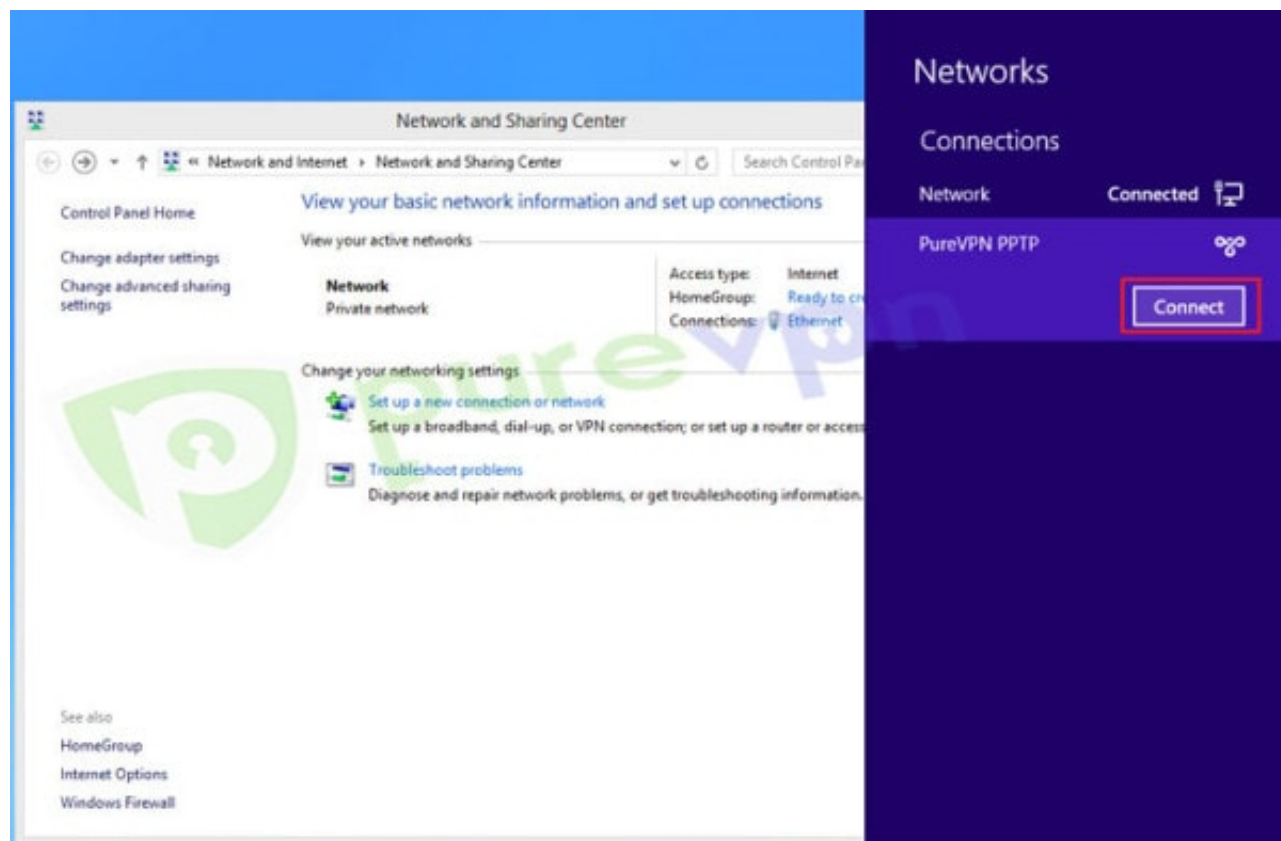
- Click on “**Networking**” tab
- Uncheck “**Internet Protocol Version 6 (TCP/IPv6)**” and “**File and Printer Sharing for Microsoft Networks**” then
- Click “**OK**”



10 Click on “**Wifi / Lan icon**” from System tray

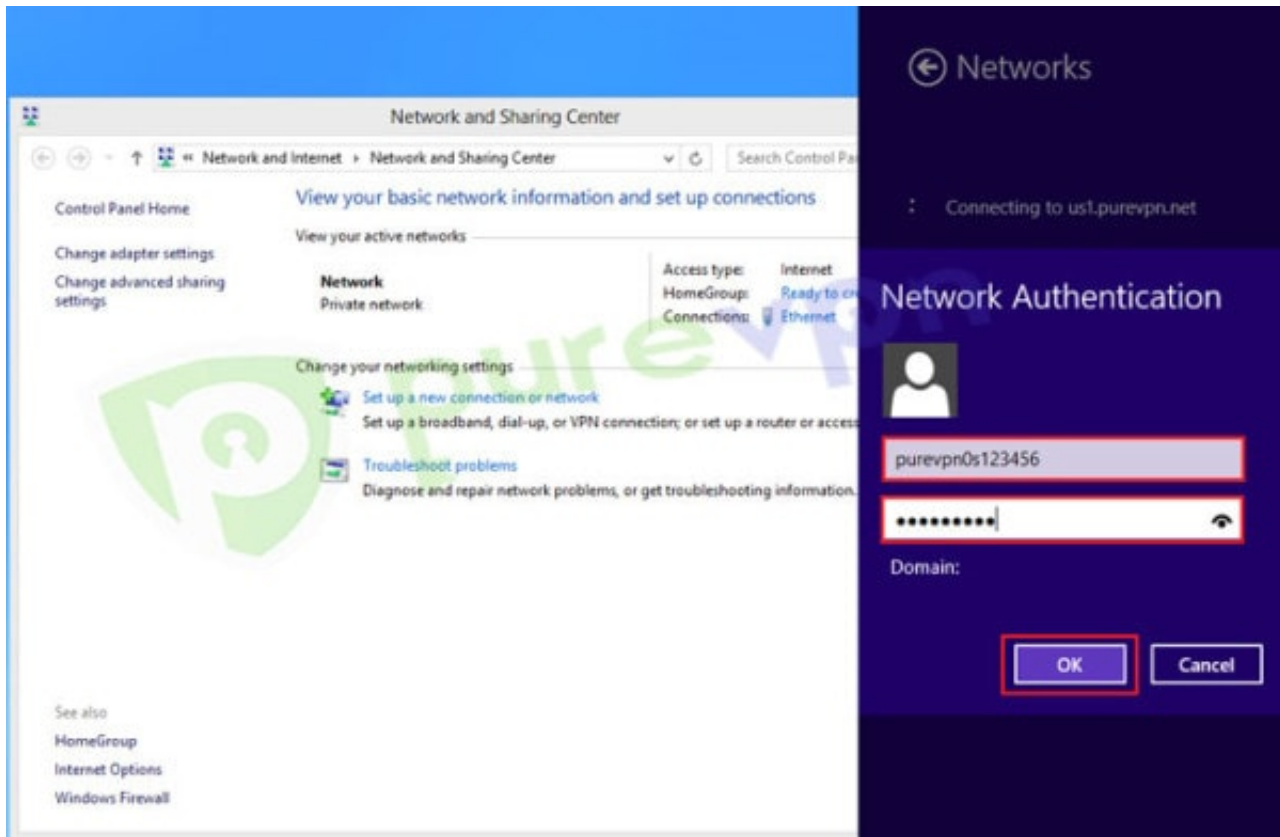


11 Click on PureVPN PPTP connection and click **“Connect”**



12 Insert your **Username and Password** provided by PureVPN then Click **“OK”**

Important Note: Please always remember your PureVPN username & password is different from your Website Member Area email address & Password.



13 VPN connection will establish after verifying account details.

14 You are connected now.

15 To disconnect VPN, click on “**Lan / Wifi icon**” from System tray

16 Click on VPN connection and click **“Disconnect”**

Having Trouble Connecting?

If you're still unable to connect, then please check the most common errors and their solutions

Error 868

[Solution](#)

Error 800, 806, 807, 809

[Solution](#)

Error 720

[Solution](#)

Error 691

[Solution](#)

Error 647

[Solution](#)

PureVPN Support

Solution of Your Problems

<https://support.purevpn.com>

Please use the **comment box** for your suggestions & feedback. For additional help, please submit [support ticket](#) with errors and screen shots (if possible) **OR** Contact our 24/7 live chat.