

How to Setup PureVPN Manually on Windows 7 (L2TP) ?

Things to Consider:

Before you begin, please make sure that:

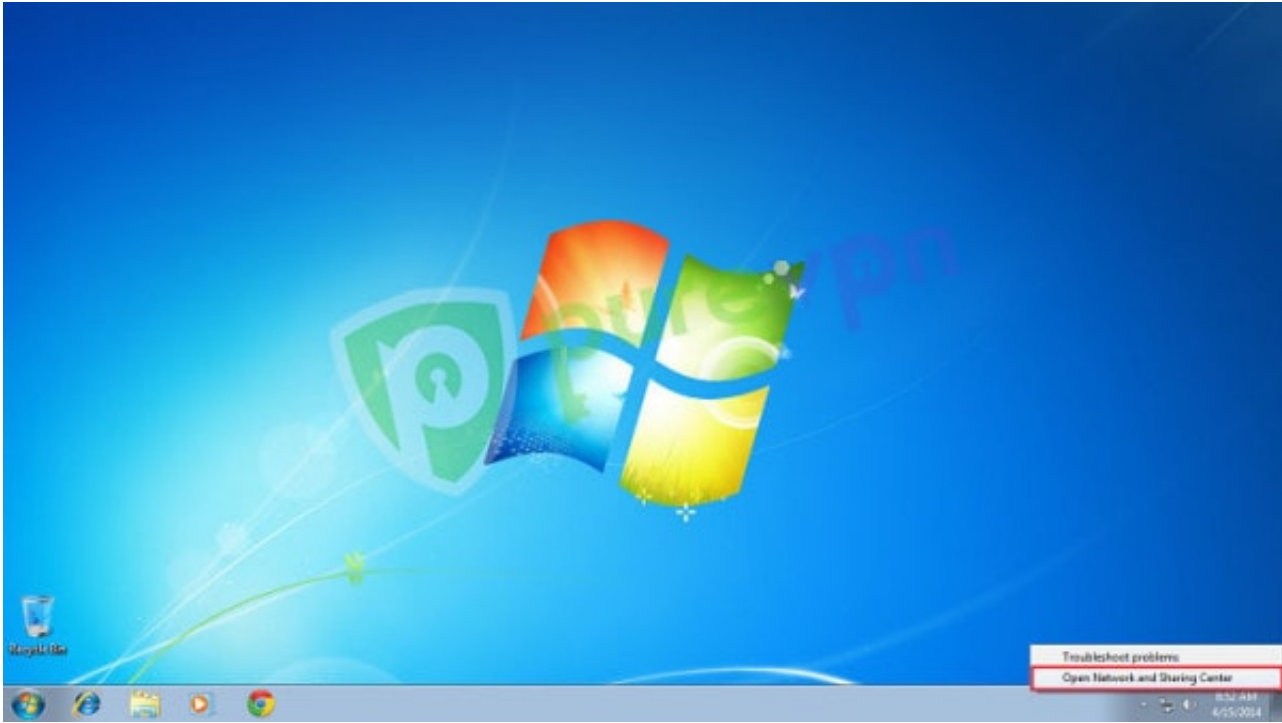
- You have a working internet connection
- Windows Supported Device.
- A Premium PureVPN account (If you haven't bought yet [click here](#) to buy)

You can watch the following video for **Step by Step Configuration of PureVPN manually on Windows 7 L2TP.**

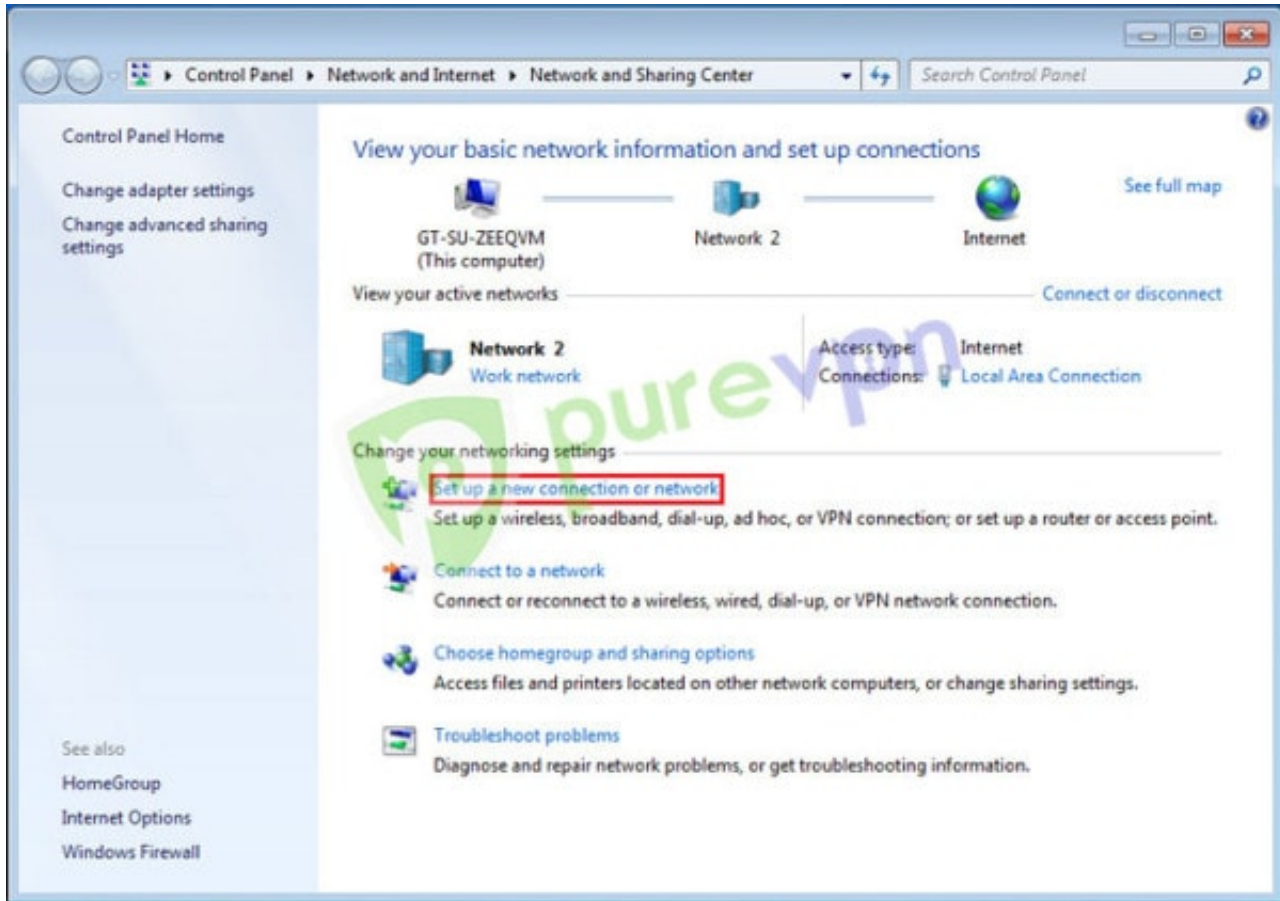
You can also follow the below given tutorial of **PureVPN setup manually on Windows 7 L2TP:**

Note: We have just launched New PureVPN Windows Software BETA version. If you need guide on BETA version [Click Here.](#)

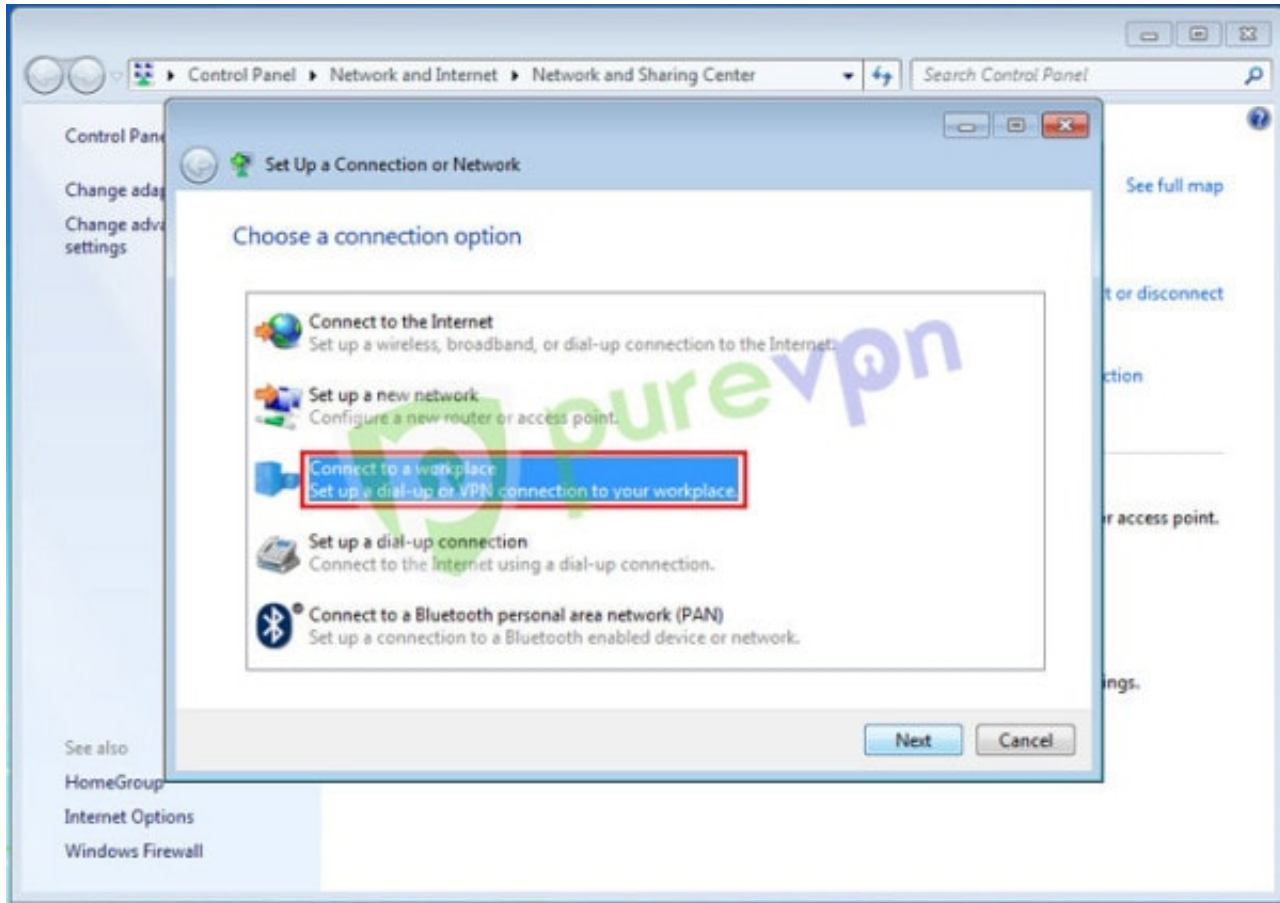
1 Right click on “**Lan / Wifi icon**” from System tray and select “**Open Network and Sharing Center**”



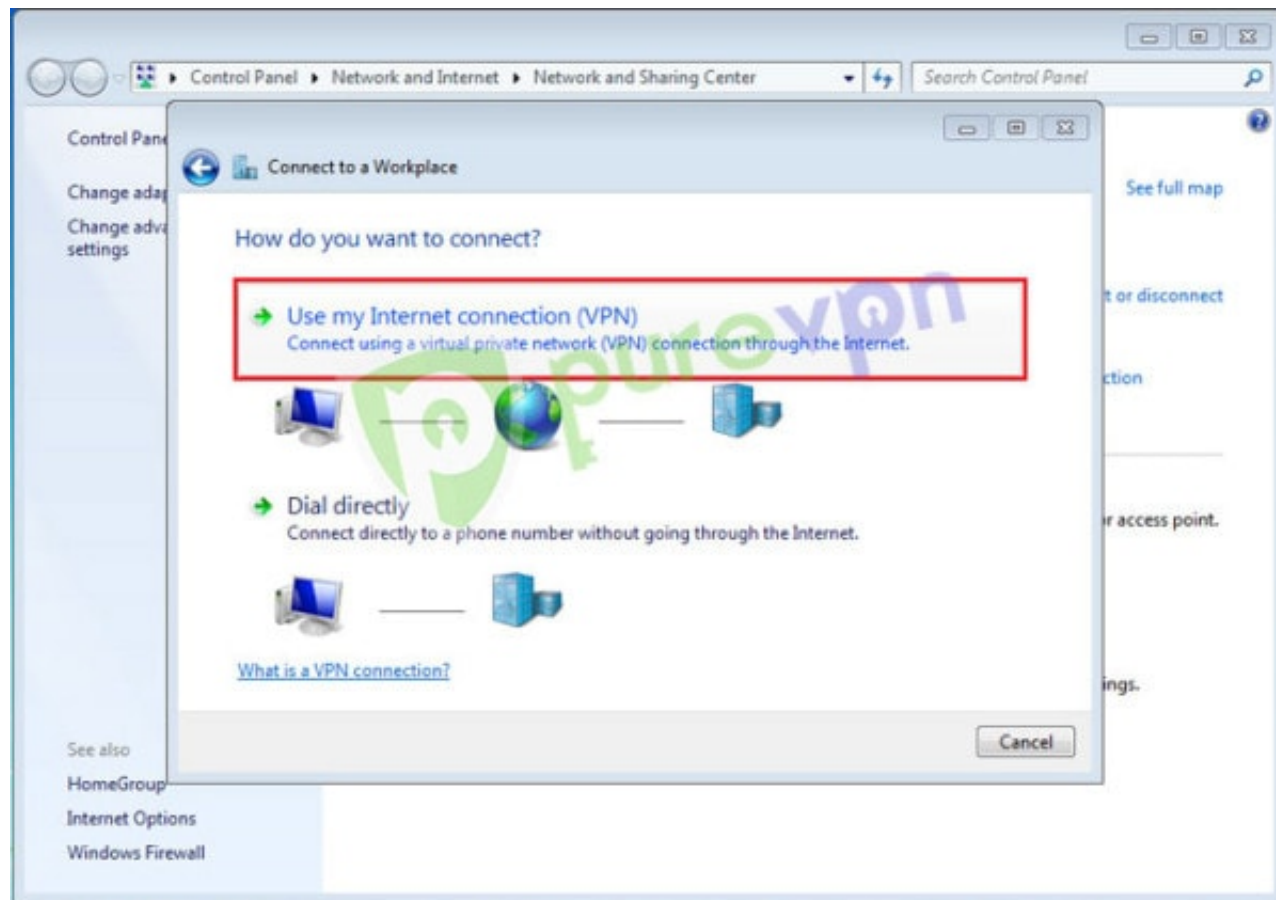
2 Click on **“Set up a new connection or network”**



3 Select **“Connect to workplace”** and click **Next**

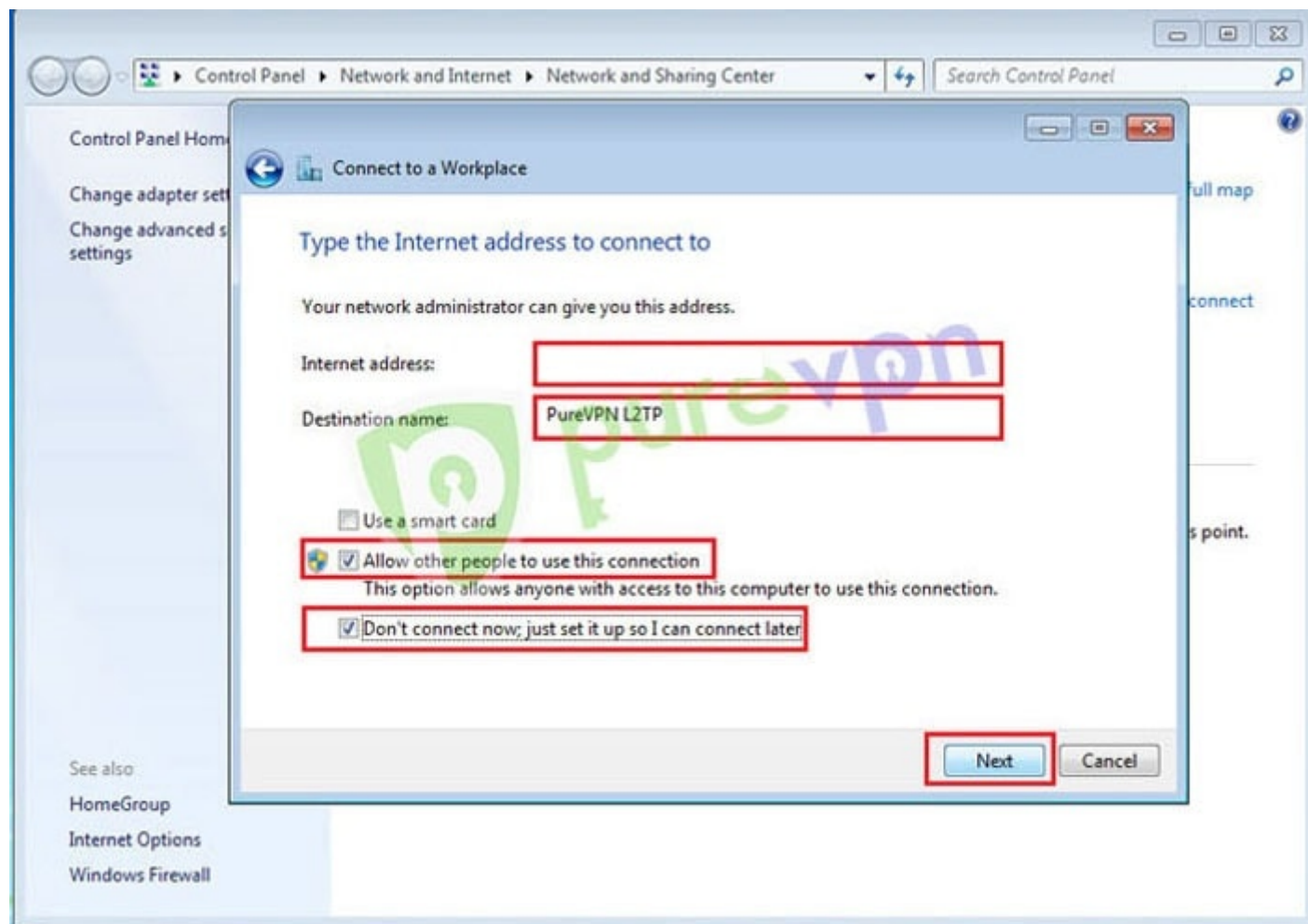


4 Select “Use my Internet connection (VPN)”



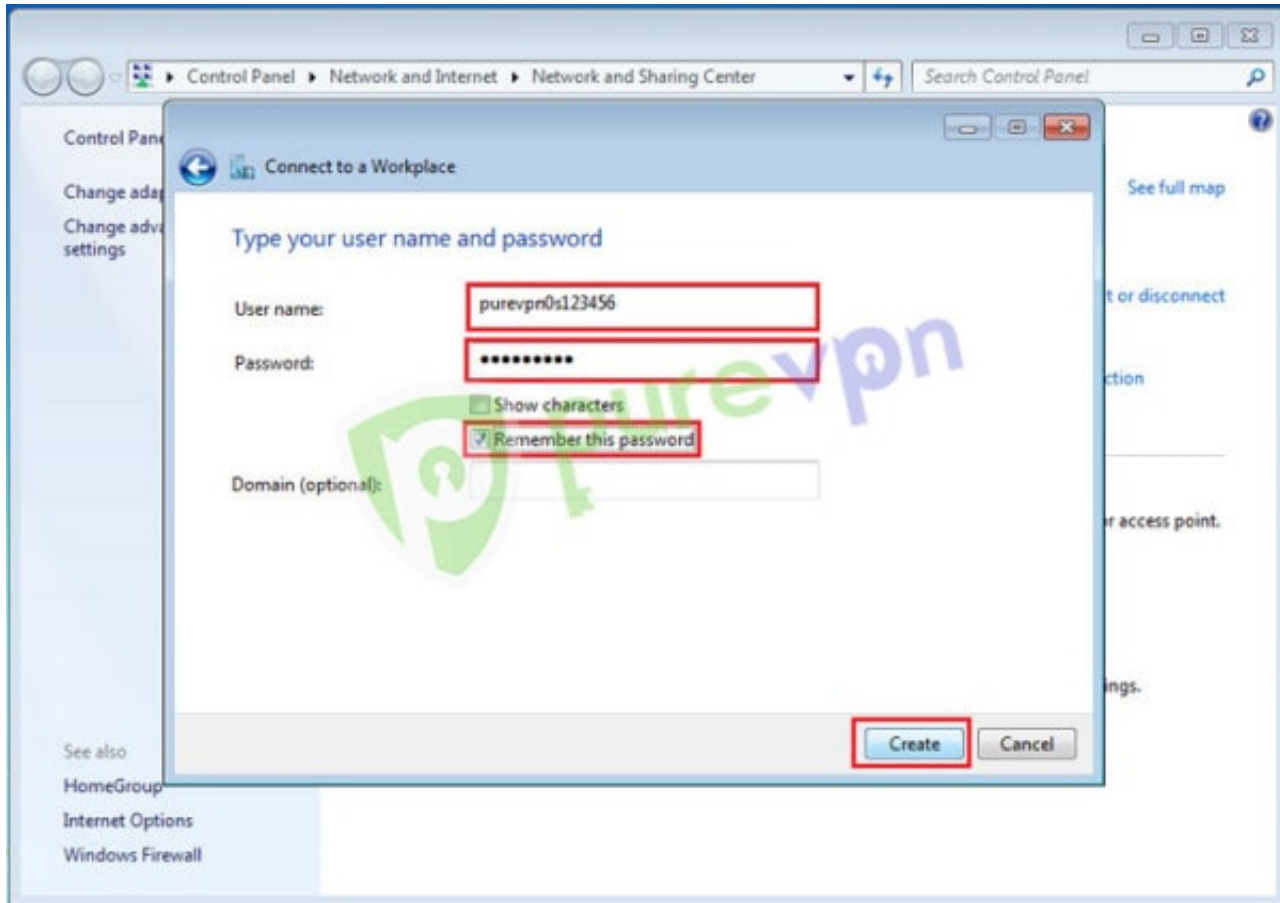
5 Insert the following info:

- Insert desired **server address**. [Click here](#) to get the server list
- Insert **destination name** as PureVPN L2TP or PureVPN US, UK etc
- Select **“Allow other people to use this connection”**
- Select **“Don’t connect now, just set it up so I can connect later”** and click **“Next”**

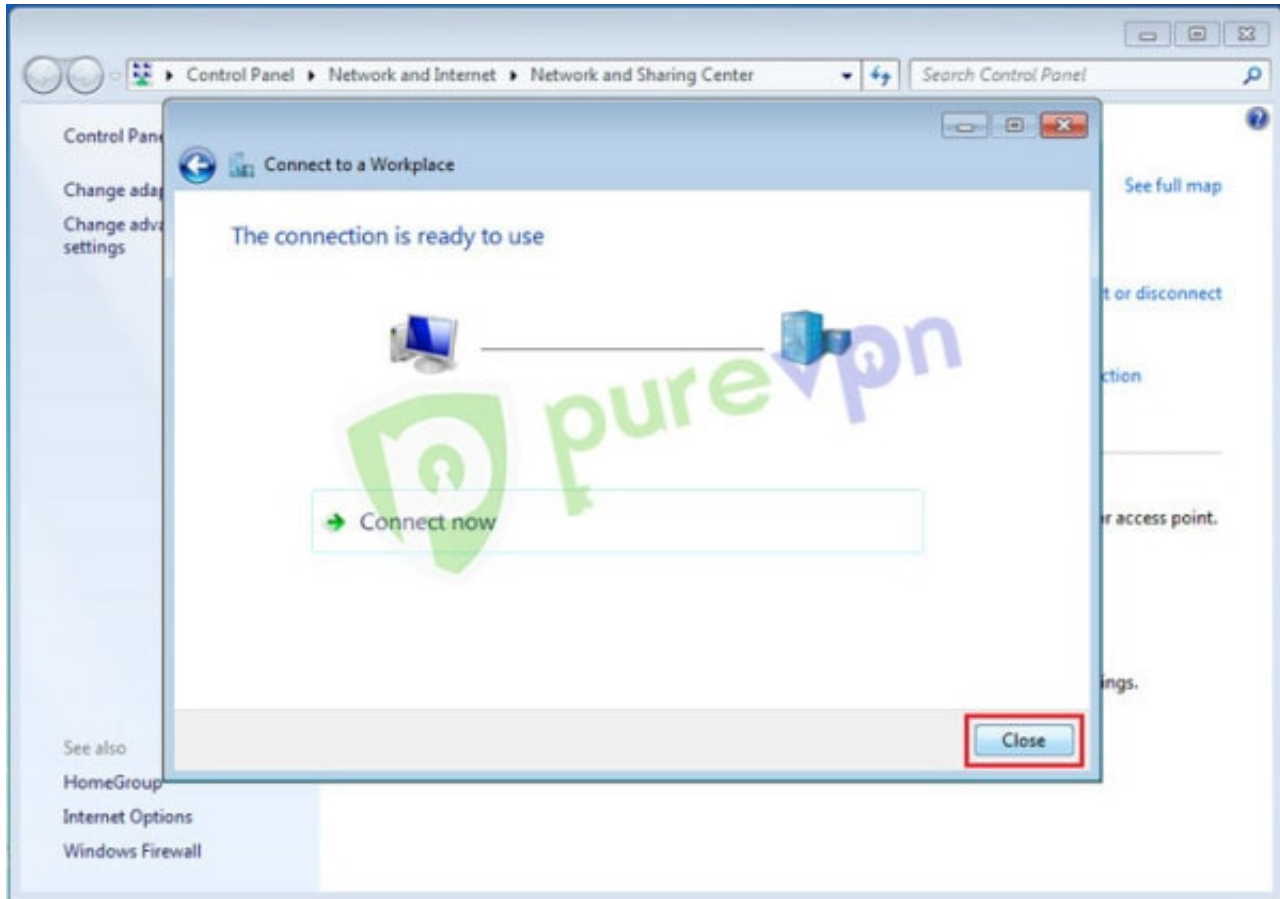


6 Insert the following info:

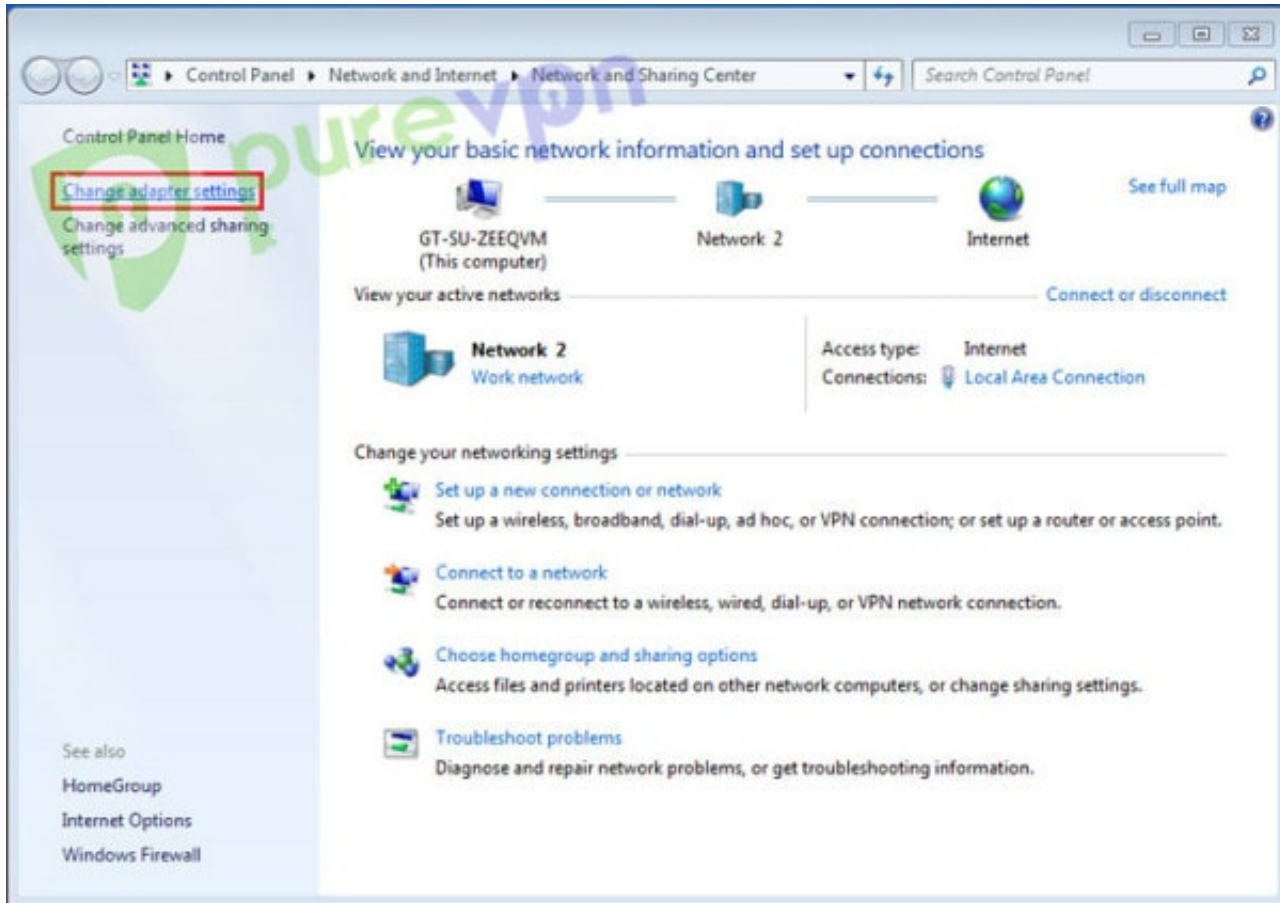
- Insert **Username & Password** provided by PureVPN. (Important Note: Your email address is not your VPN login username.)
- Tick **“Remember this password”** and hit **“Create”**



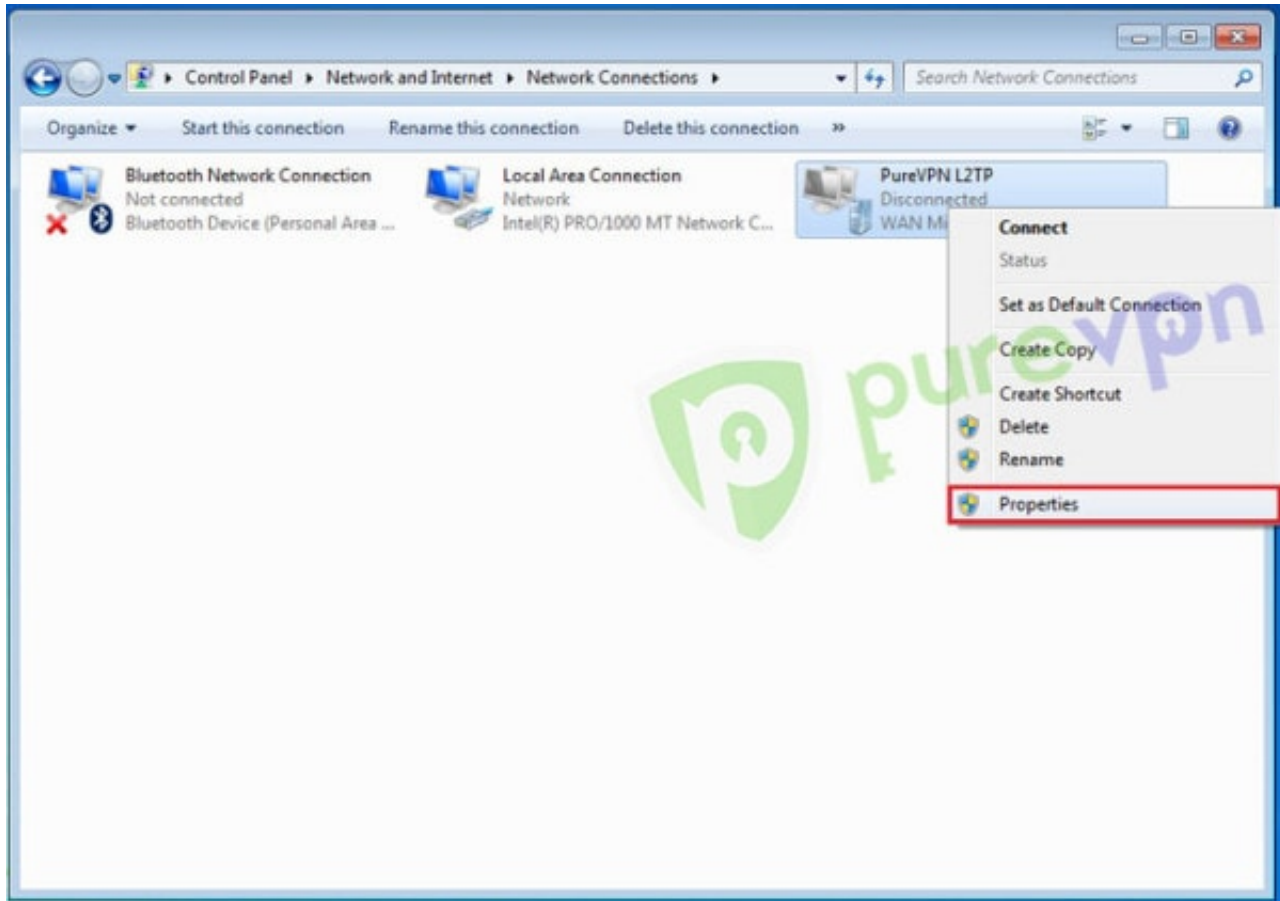
7 Click on **“Close”**



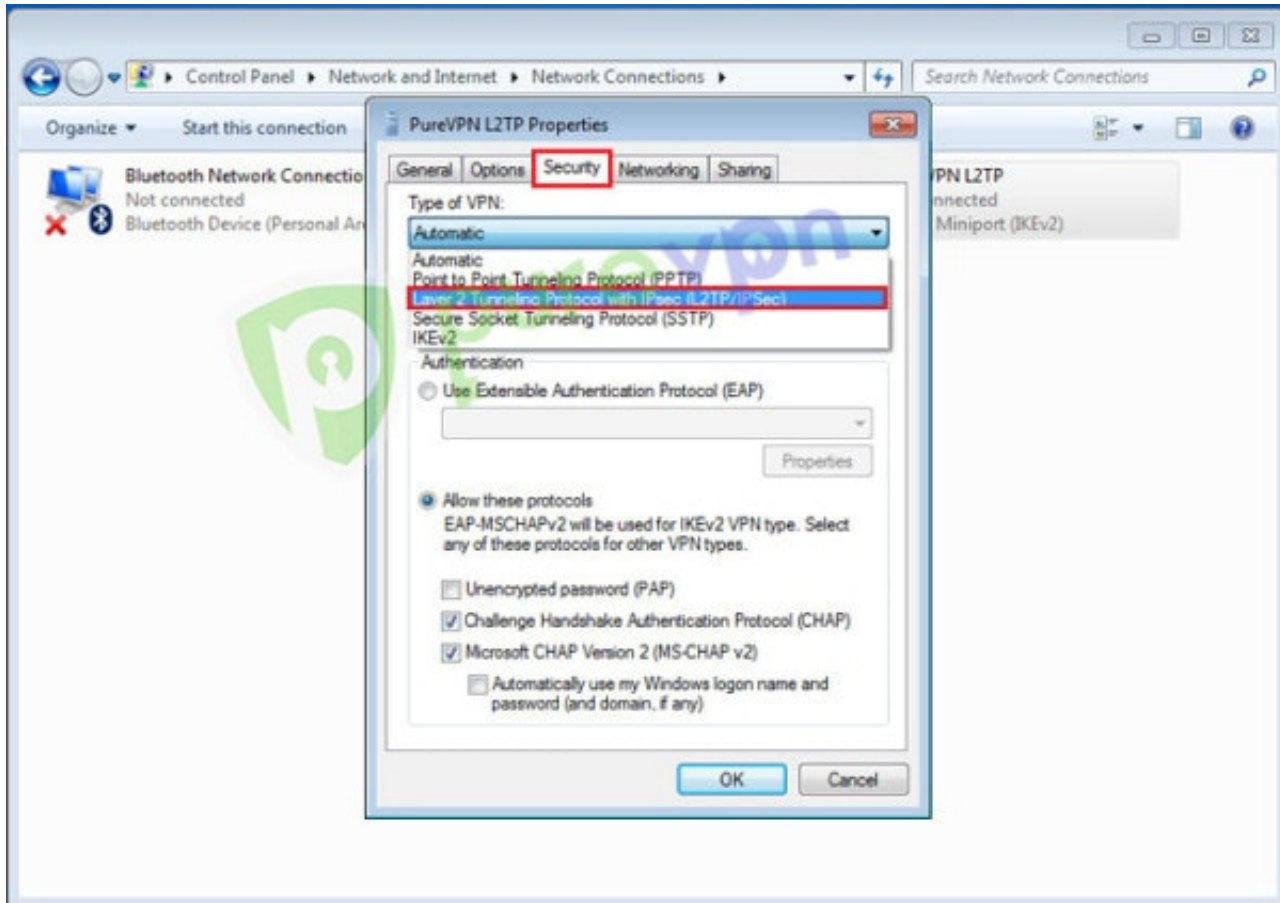
8 Click on Change adapter settings



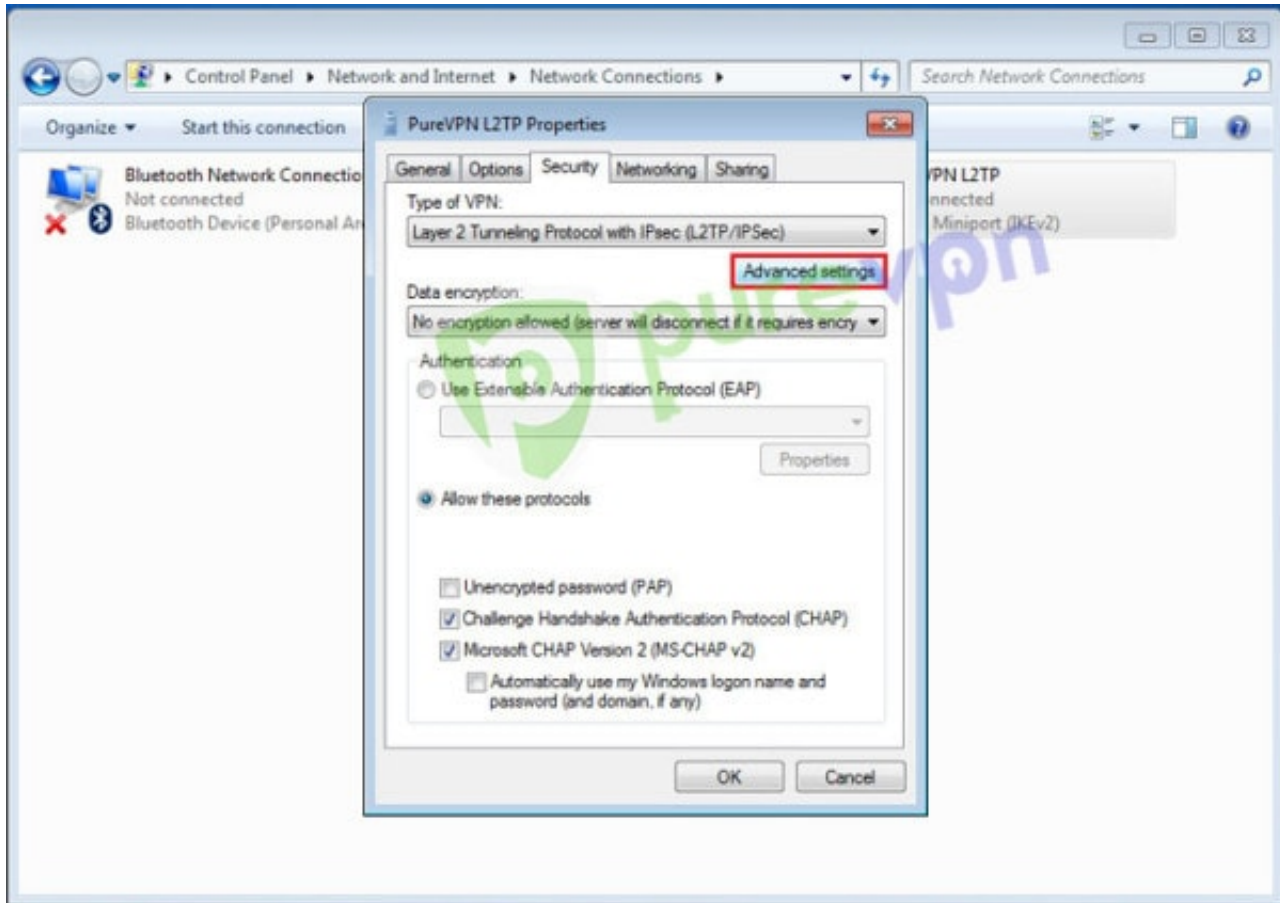
9 Right click on newly created VPN connection and go to **“Properties”**



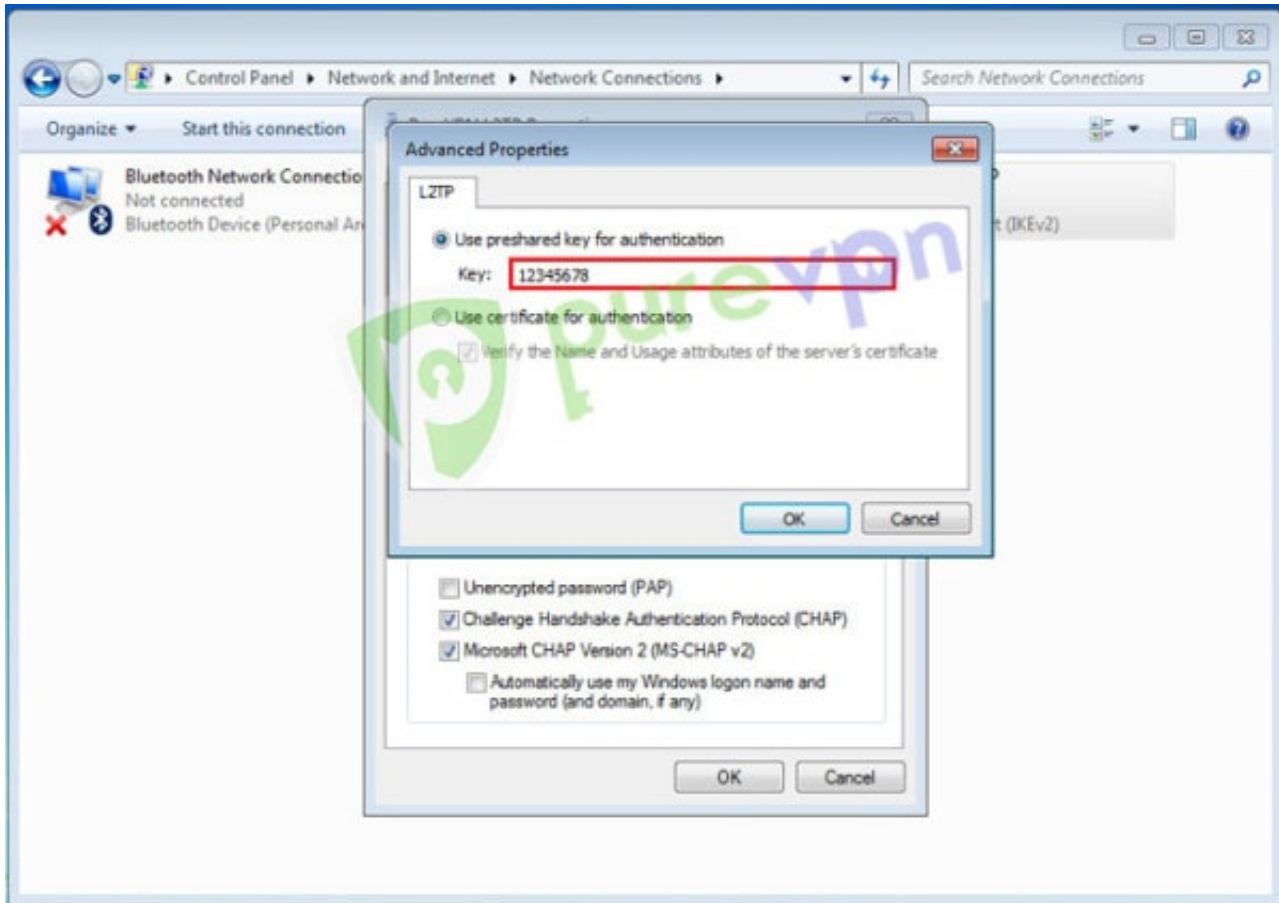
10 Click on Security tab and select “Layer 2 Tunneling protocol with IPsec (L2TP/IPsec)”



11 Click on **Advance settings**

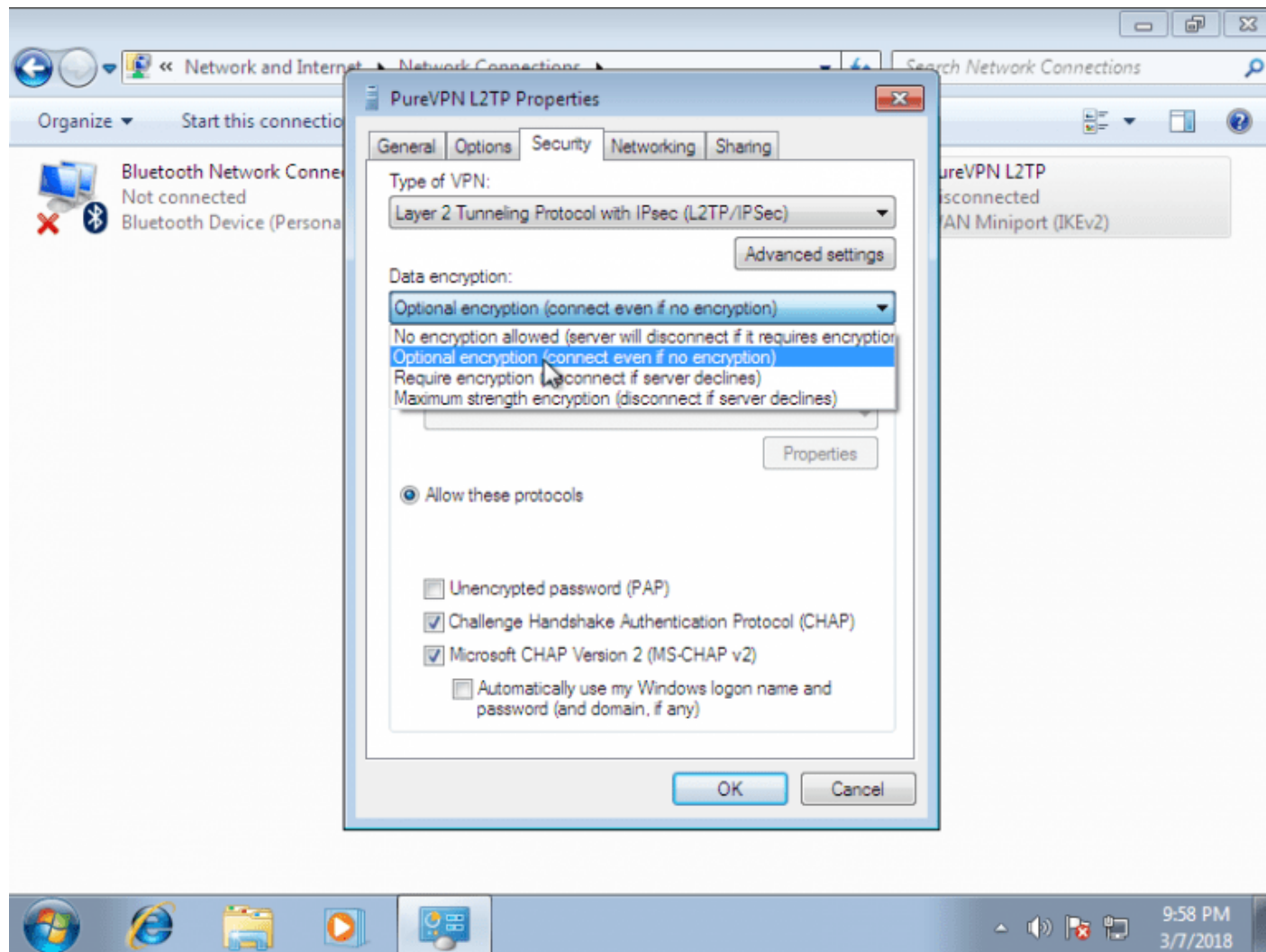


12 Select **“User Preshared key for authentication and insert **“12345678”** in Key.**



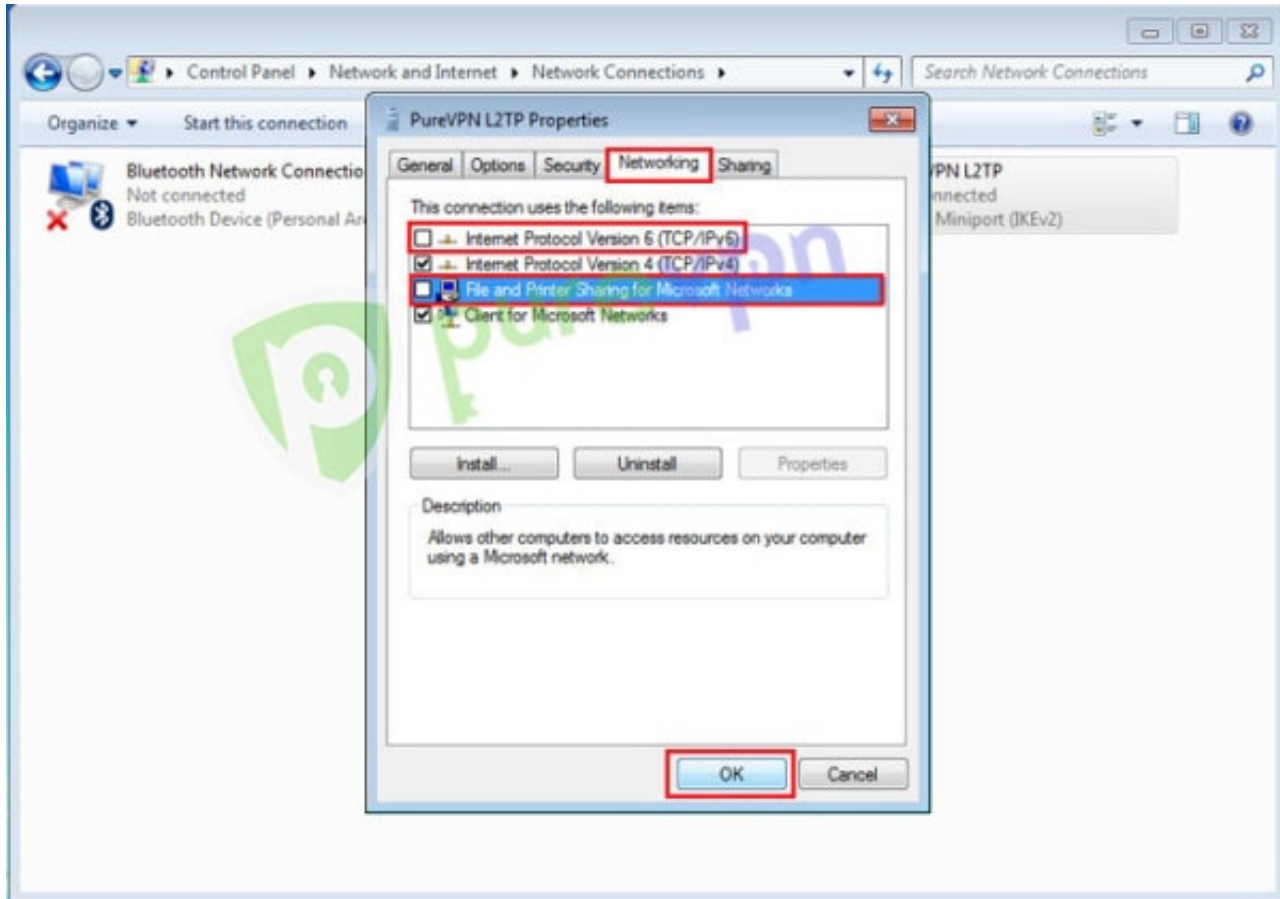
13 Insert the following info:

- Select desired encryption from “**Data encryption**” drop down menu
- For streaming purpose select “**Optional encryption**”

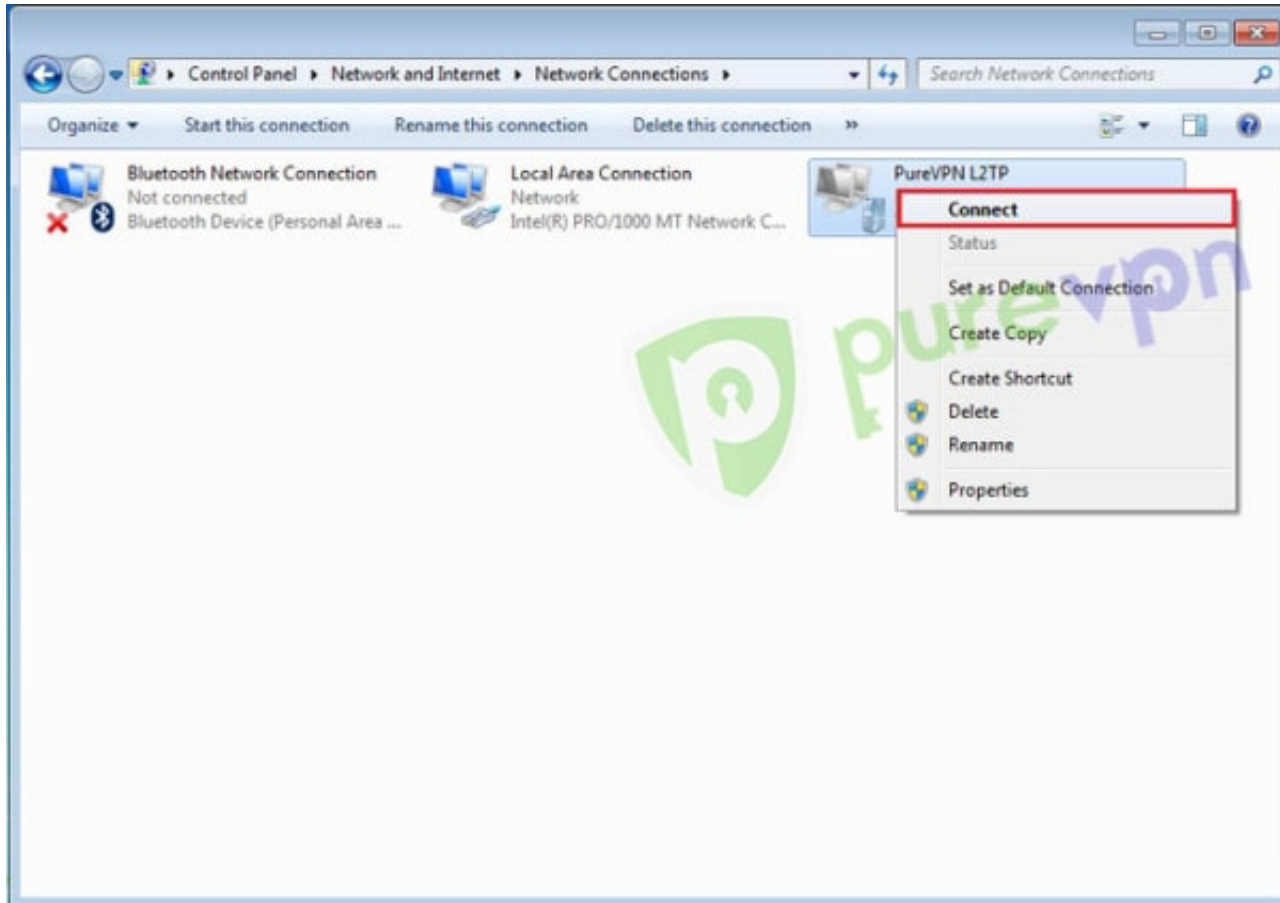


14 Insert the following info:

- Click on **“Networking”** tab
- Uncheck **“Internet Protocol Version 6 (TCP/IPv6)”** and **“File and Printer Sharing for Microsoft Networks”** then click **“OK”**

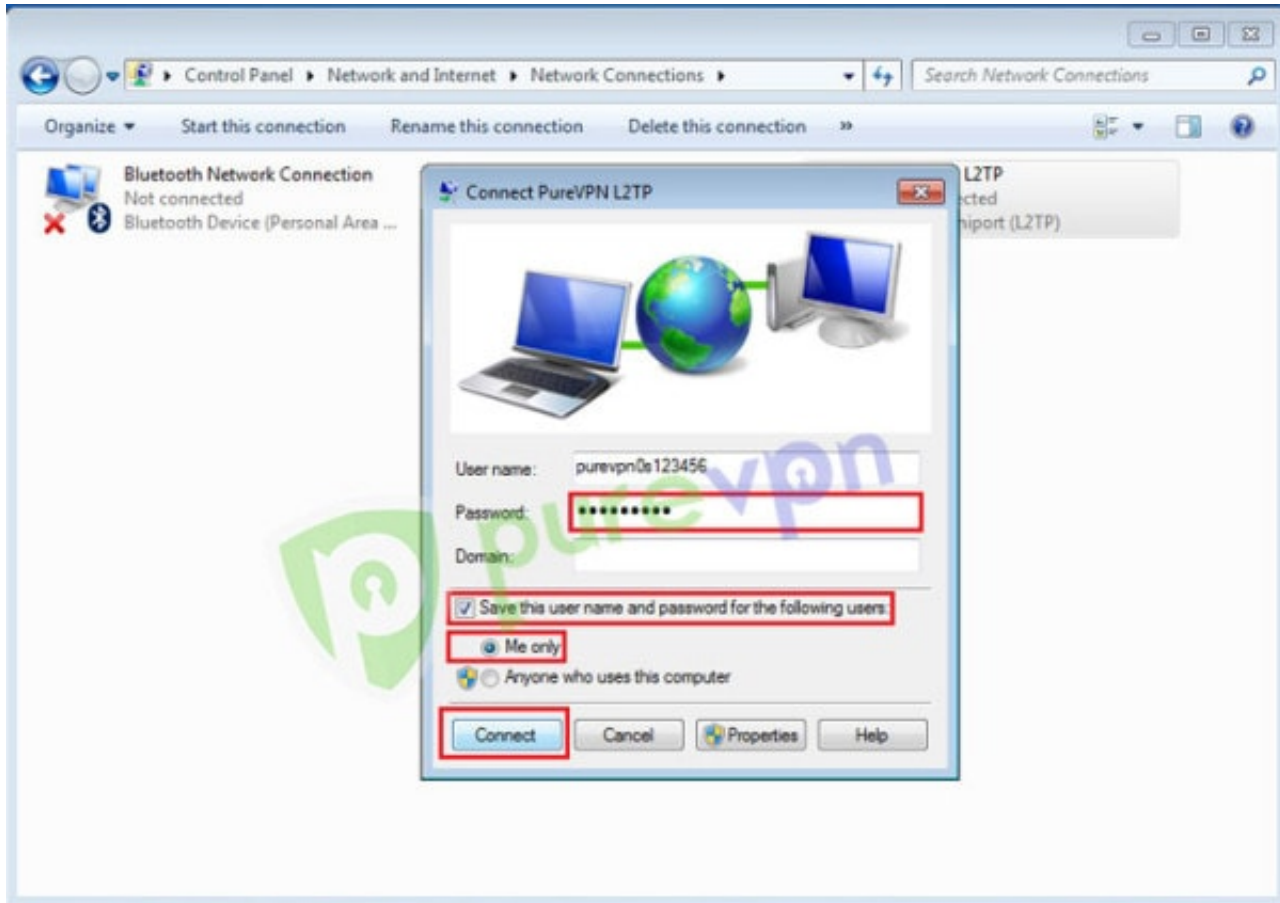


15 Right click on VPN connection and click **“Connect”** or simply **double click on VPN Connection.**

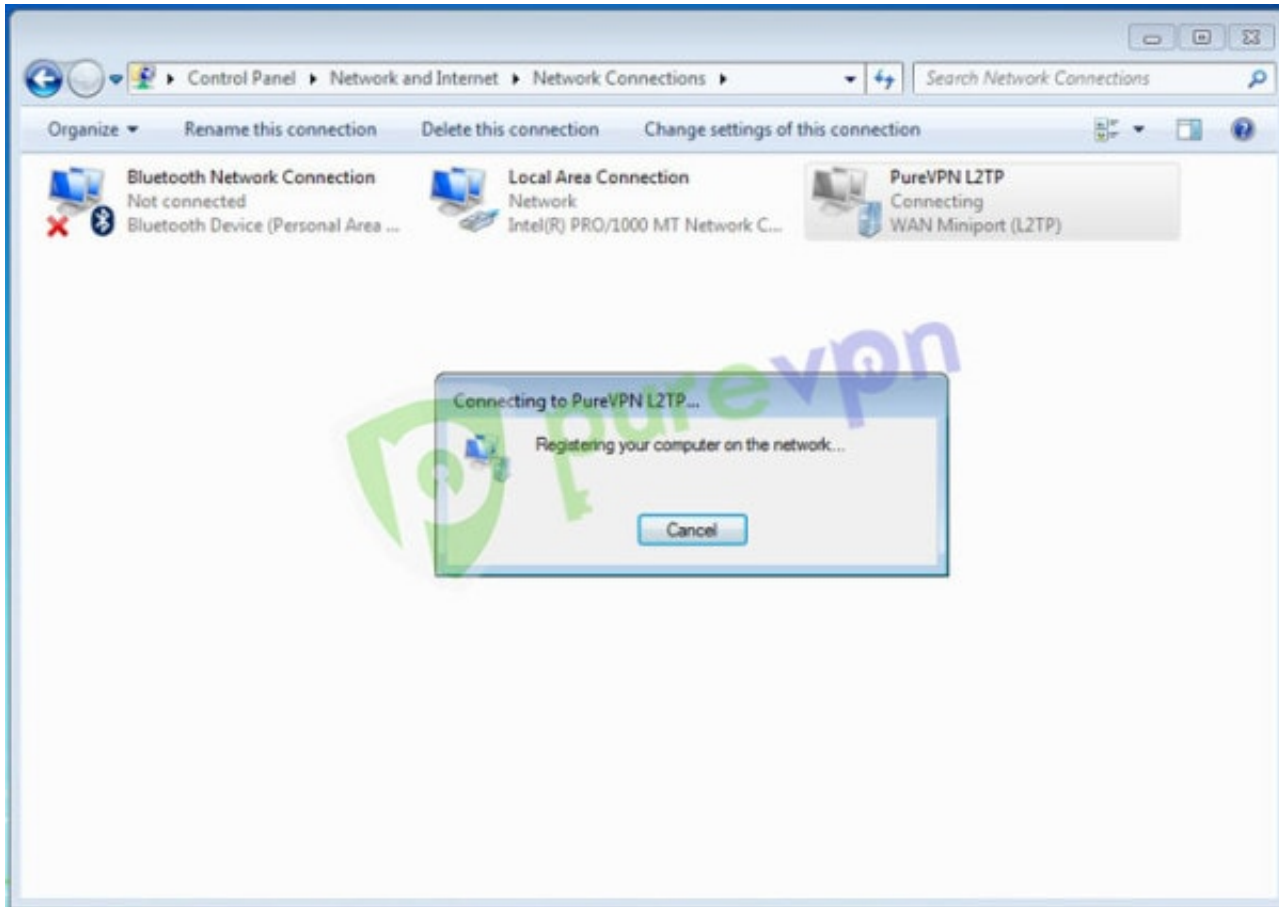


16 Insert the following info:

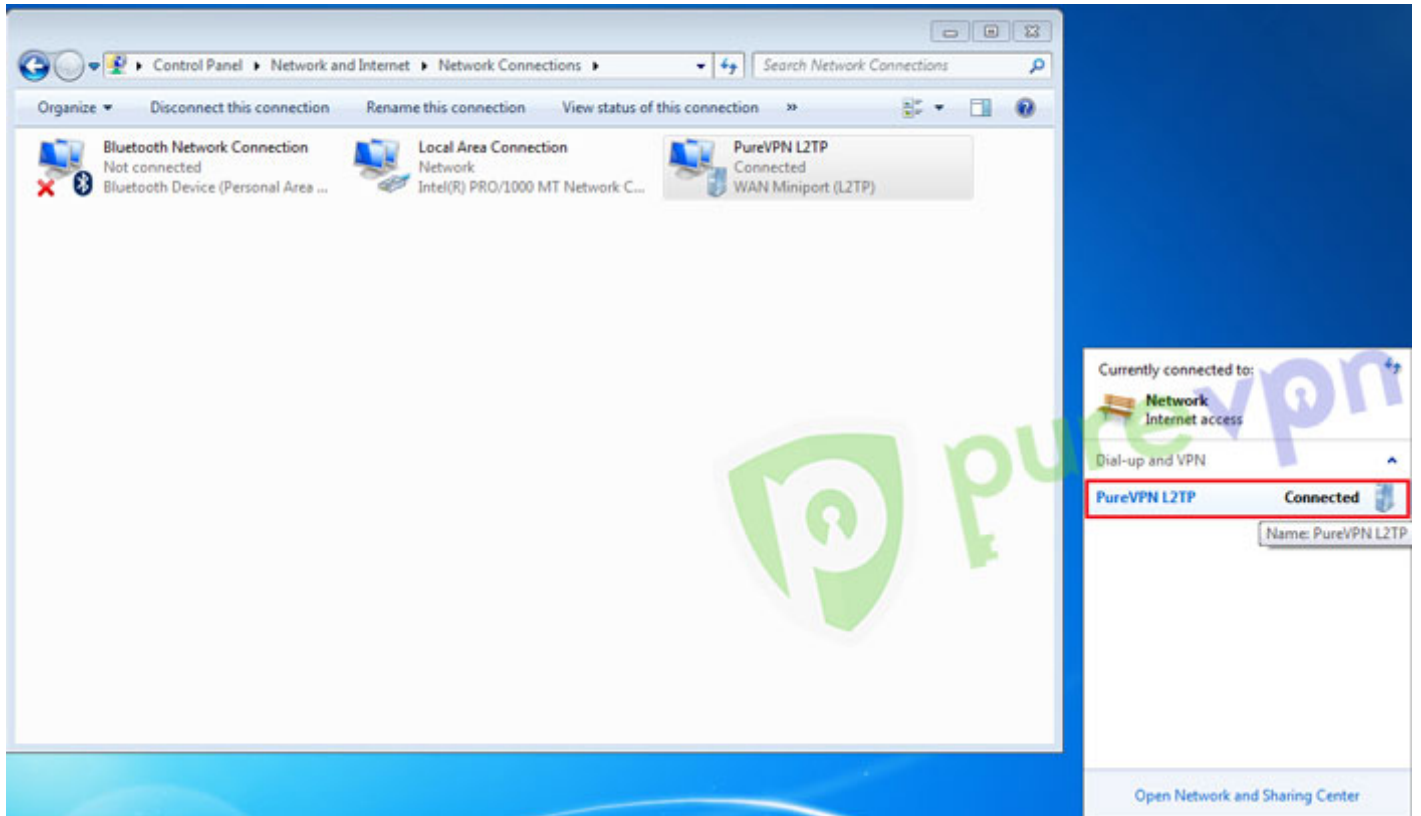
- Insert **Username** provided by PureVPN
- Insert **Password** provided by PureVPN
- Tick **“Save this username and password for the following users and select “Me only” or “Anyone who uses this computer”**
- Click on **“Connect”**



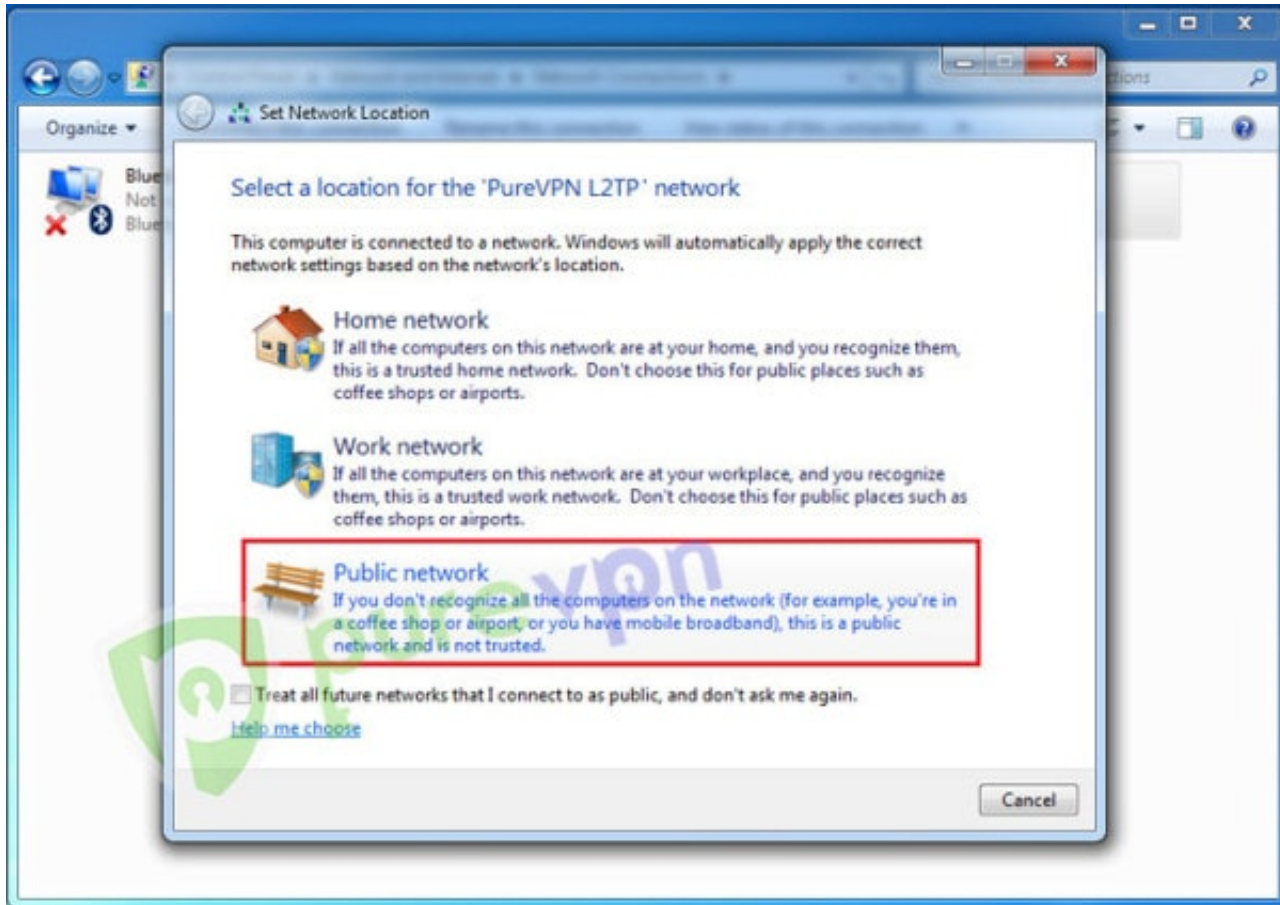
17 VPN connection will be established after username and password verification



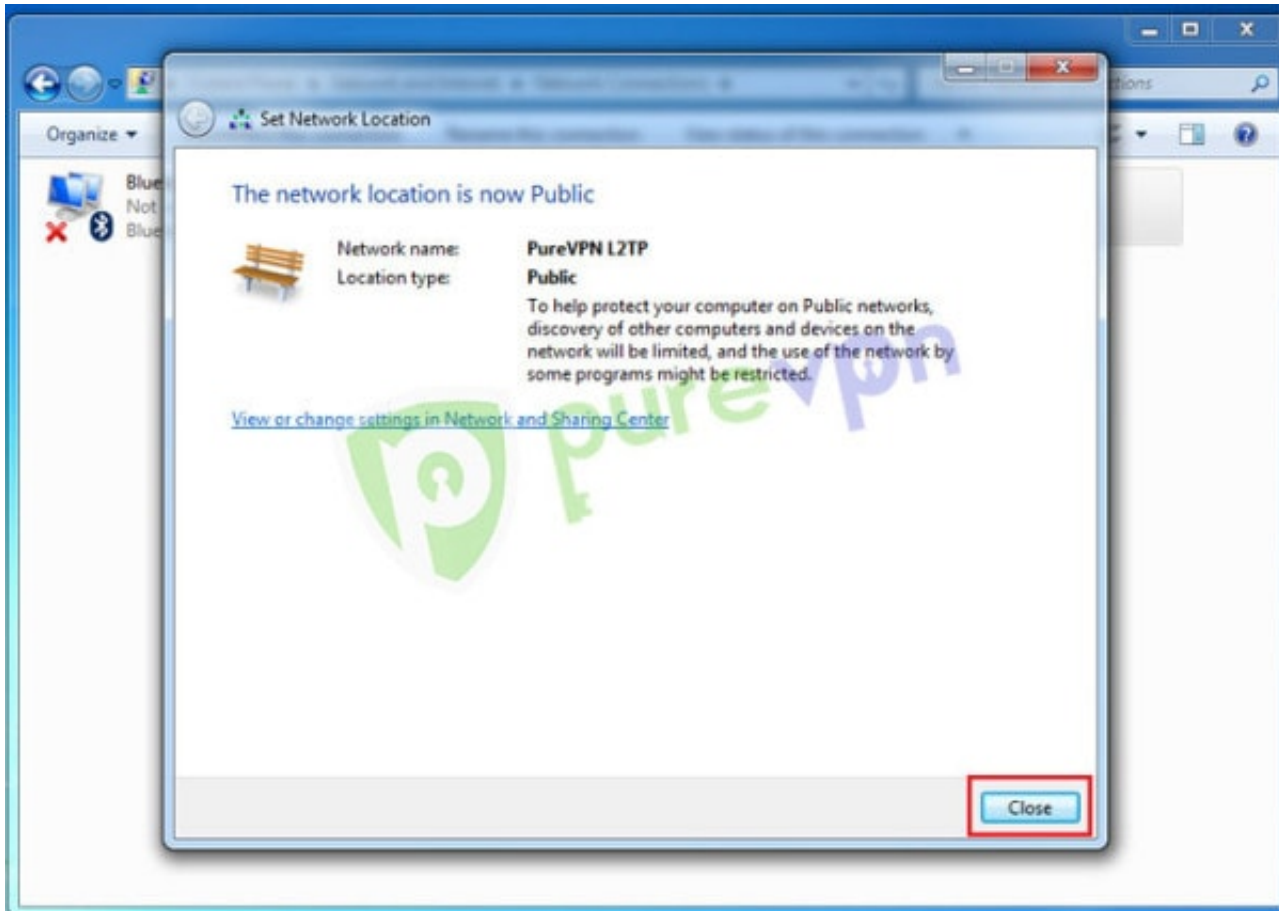
18 You are connected now.



19 Select Network Type as Public



20 Click on close and enjoy the Freedom!!!!!!!!!!!!



Having Trouble Connecting?

If you're still unable to connect, then please check the most common errors and their solutions

Error 868

[Solution](#)

Error 800, 806, 807, 809

[Solution](#)

Error 720

[Solution](#)

Error 691

[Solution](#)

Error 647

[Solution](#)

Please use the **comment box** for your suggestions & feedback. For additional help, please submit [support ticket](#) with errors and screen shots (if possible) **OR** Contact our 24/7 live chat.