

PPTP Configuration Guide for Ubuntu

Configuring PPTP on Ubuntu has never been simpler than it has been with PureVPN. The protocol does have some issues when it comes to security, but with the aid of **PureVPN**, users can overcome those flaws instantly.

Things to Consider:

Before you begin, please make sure that:

- You have a working internet connection
- Ubuntu Supported Device.
- A Premium PureVPN account (if you haven't bought it yet, [click here](#) to buy)

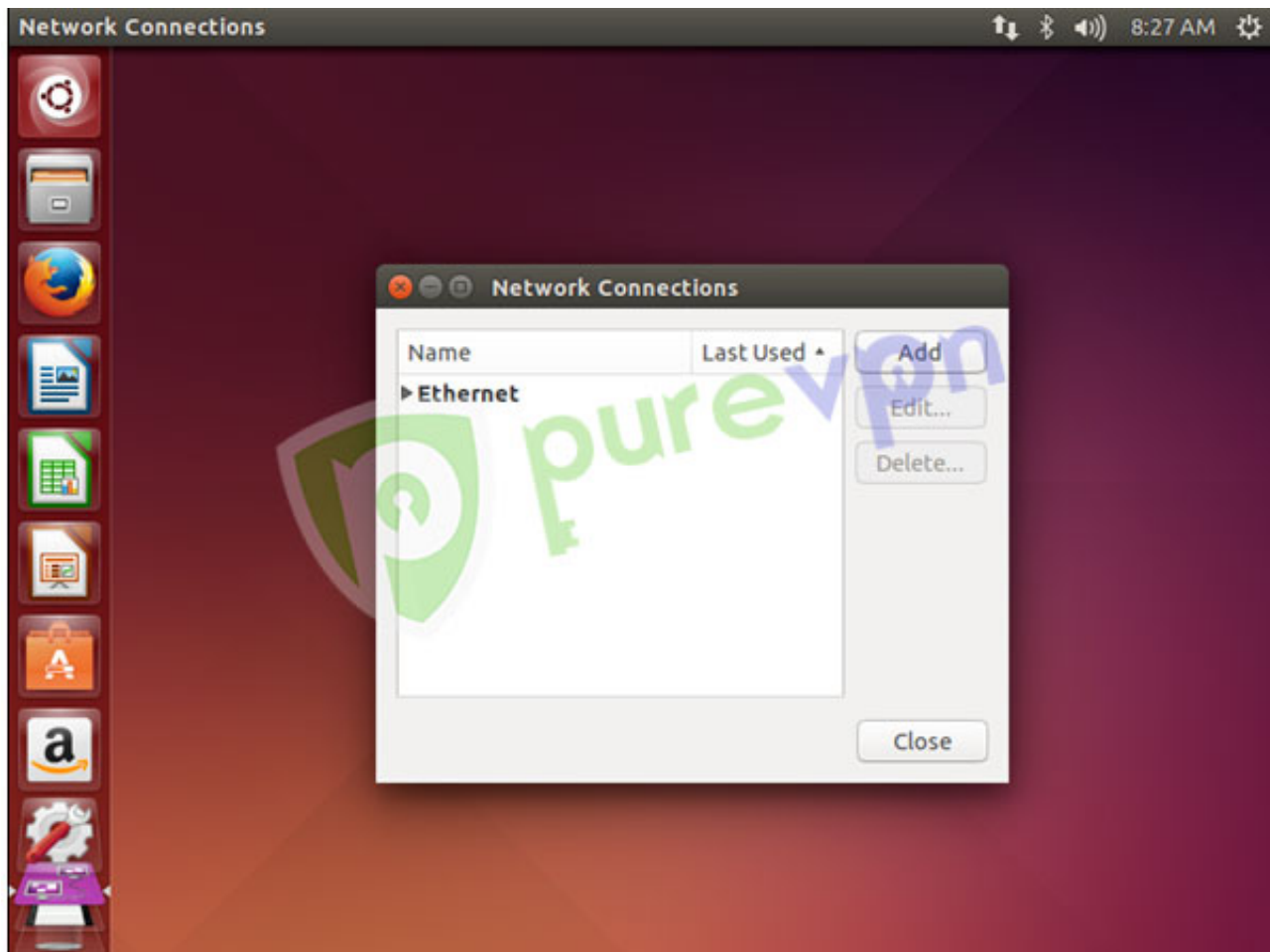
To Configure **PPTP** on **Ubuntu** by following the steps below:

1 Select the following options:

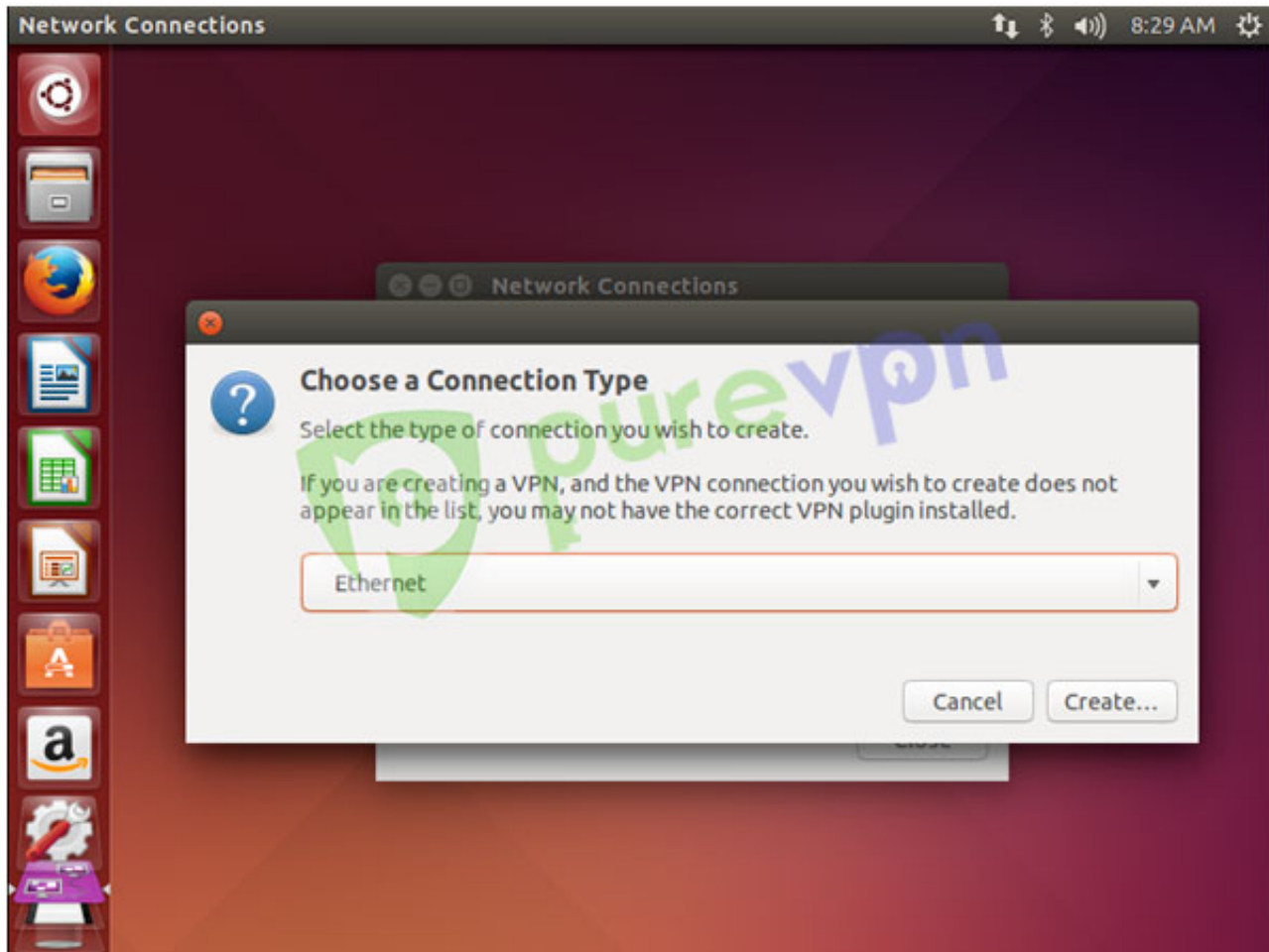
- Click on "**Network Connection Icon**"
- Go to "**VPN Connections**" and select "**Configure VPN...**"

PureVPN Support

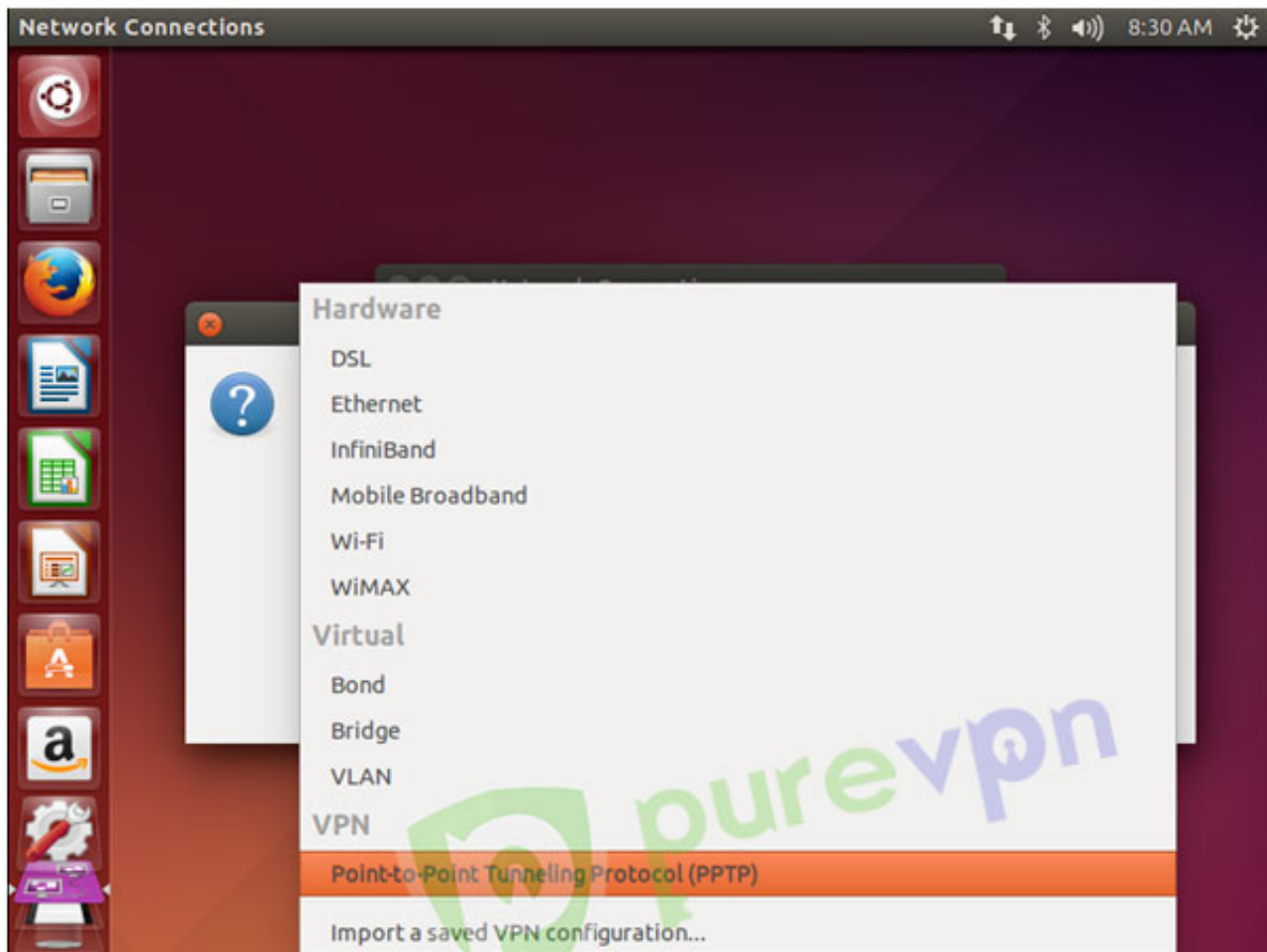
Solution of Your Problems
2 Click on Add
<https://support.purevpn.com>



3 Click on drop down menu

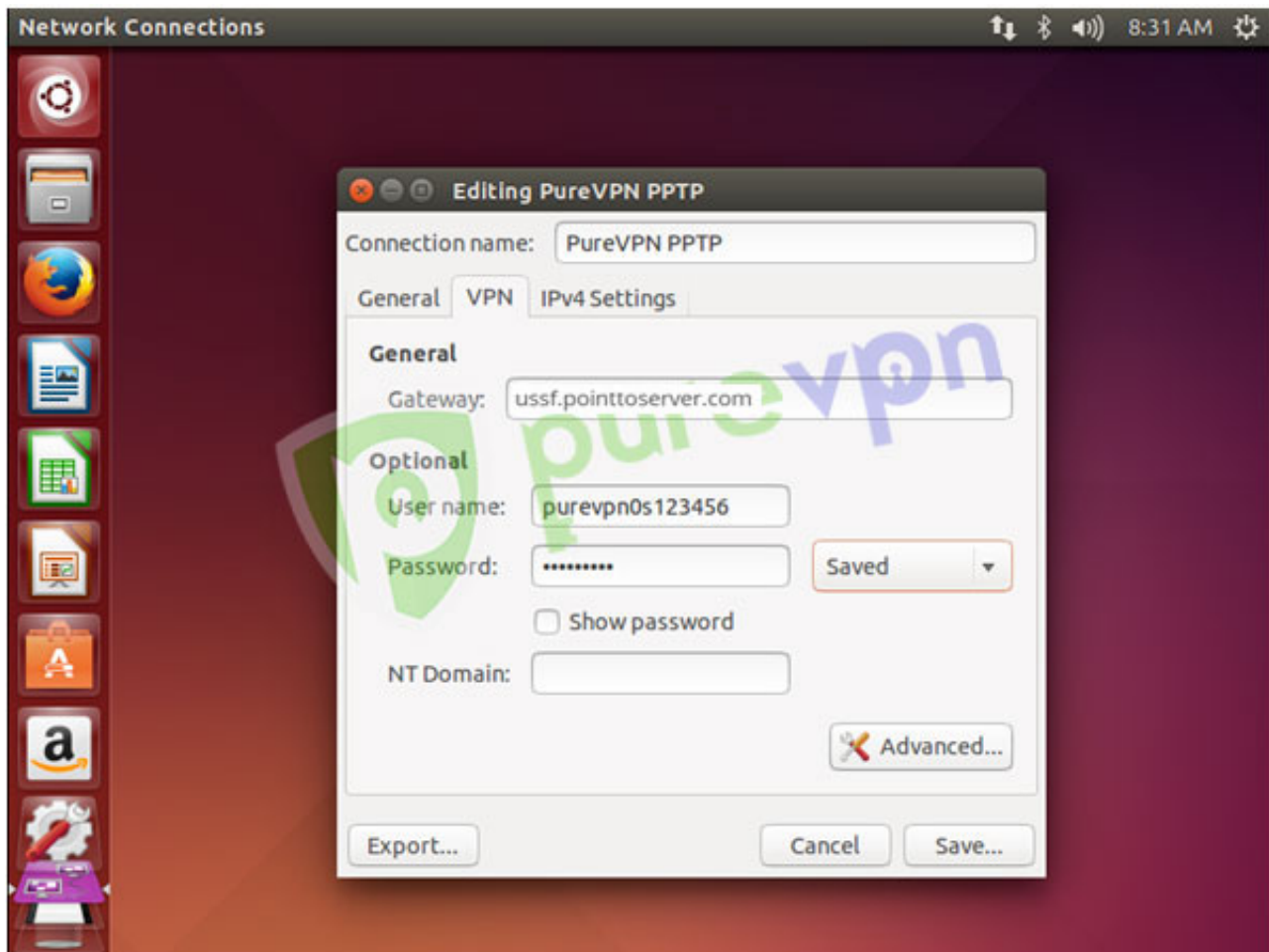


4 Select **“Point-to-Point Tunneling Protocol (PPTP)”** and click **“Create”**



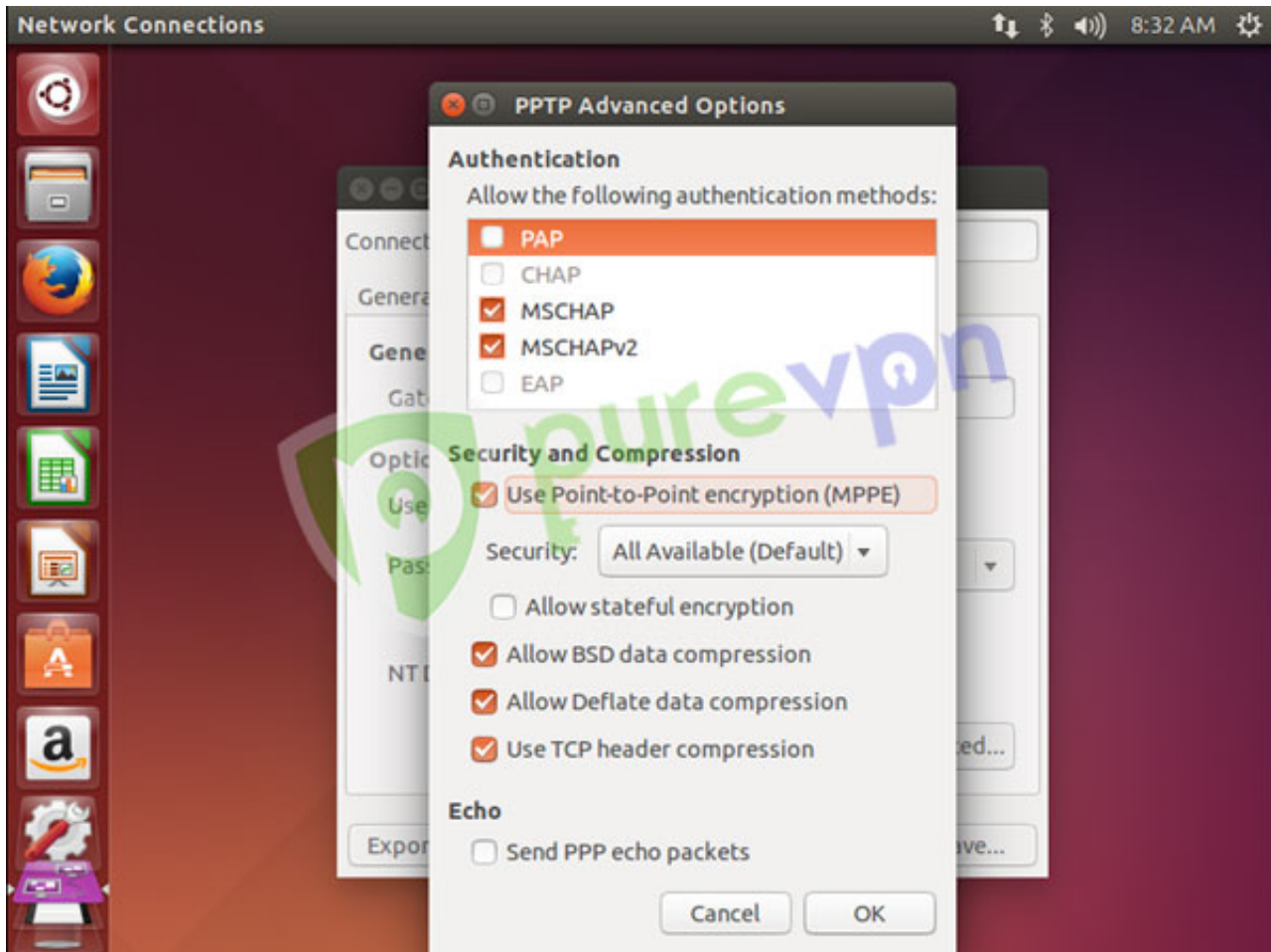
5 Select the following options:

- Insert "Connection name:" PureVPN PPTP
- Insert desired server in "Gateway"
- Click [here](#) to get the server list.
- Insert Username provided by PureVPN
- Insert Password provided by PureVPN
- Click on "Advanced"

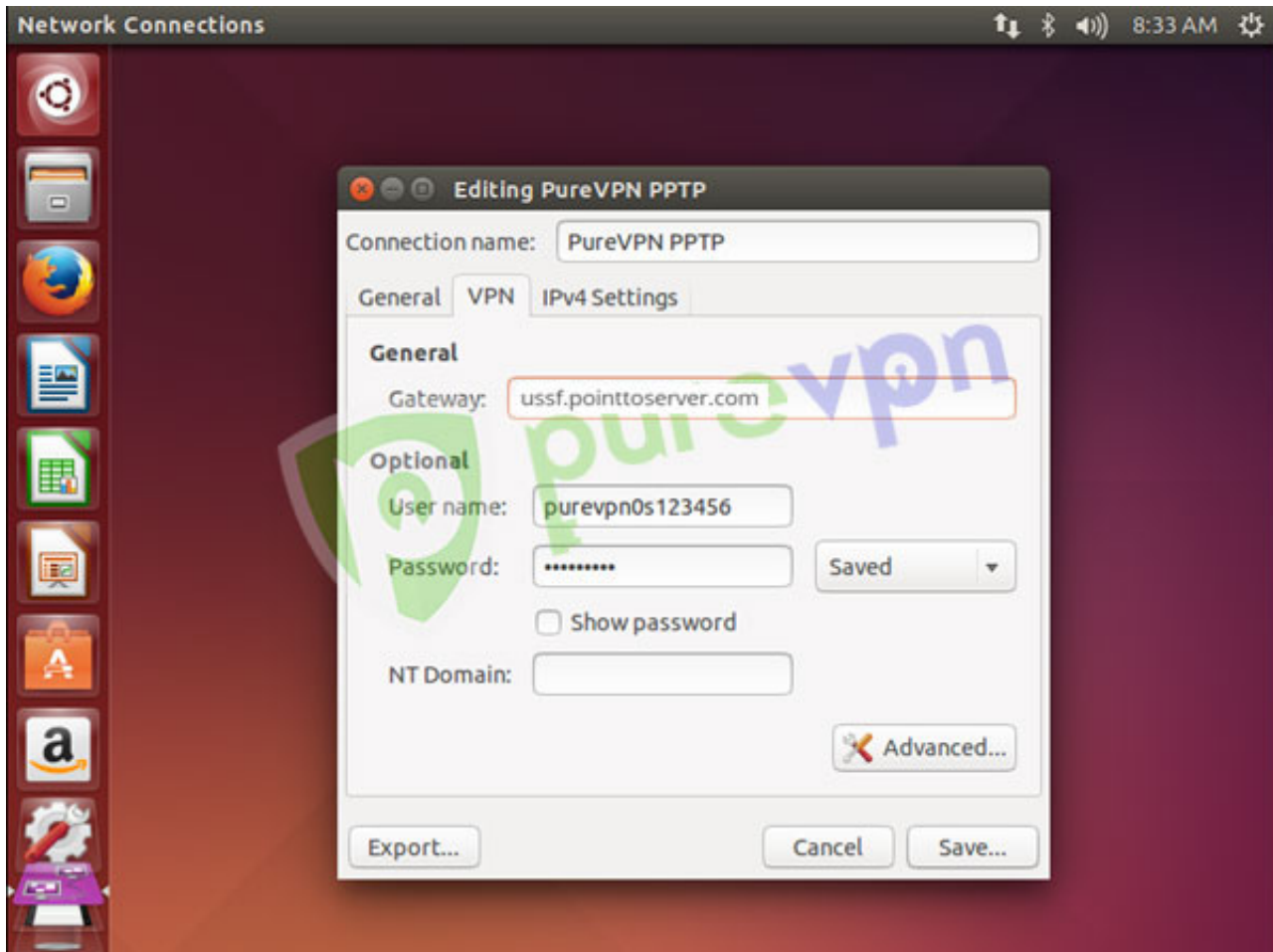


6 Select the following options:

- Use Point-to-Point encryption (MPPE)
- Allow BSD data compression
- Allow Deflate data compression
- Use TCP header compression
- Uncheck "EAP"
- Click OK

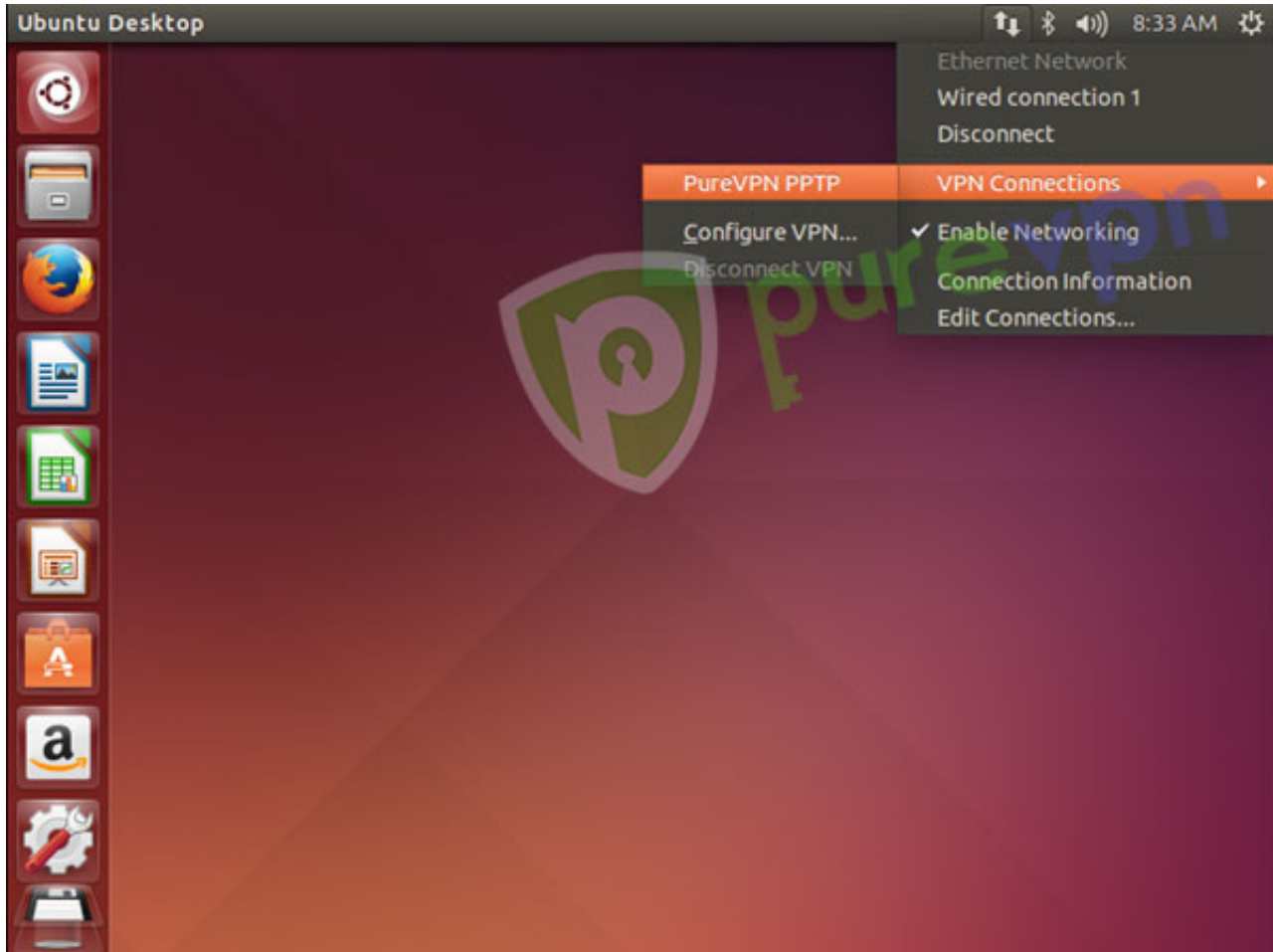


7 Click on **“Save...”** and close the **“Network Connections”** window



8 Select the following options:

- Click on “**Network Connection Icon**”
- Go to “**VPN Connections**” and select the newly created “**PureVPN PPTP**” connection.



9 You are successfully connected now. Enjoy the FREEDOM!!!!!!!

10 Select the following options:

- To disconnect VPN. Click on **“Network Connection Icon”**
- Go to **“VPN Connections”** and select **“Disconnect VPN”**

Caution: If you are looking for higher security, then please follow this [guide to disable your IPv6](#)

PureVPN Support

Solution of Your Problems

<https://support.purevpn.com>

Please use the comment box for your suggestions, feedback or if you found another workaround for the problem. For additional help, please submit support ticket with errors and screen shots (if possible) or contact our 24/7 live chat.