

## PPTP Configuration guide for Linux Mint

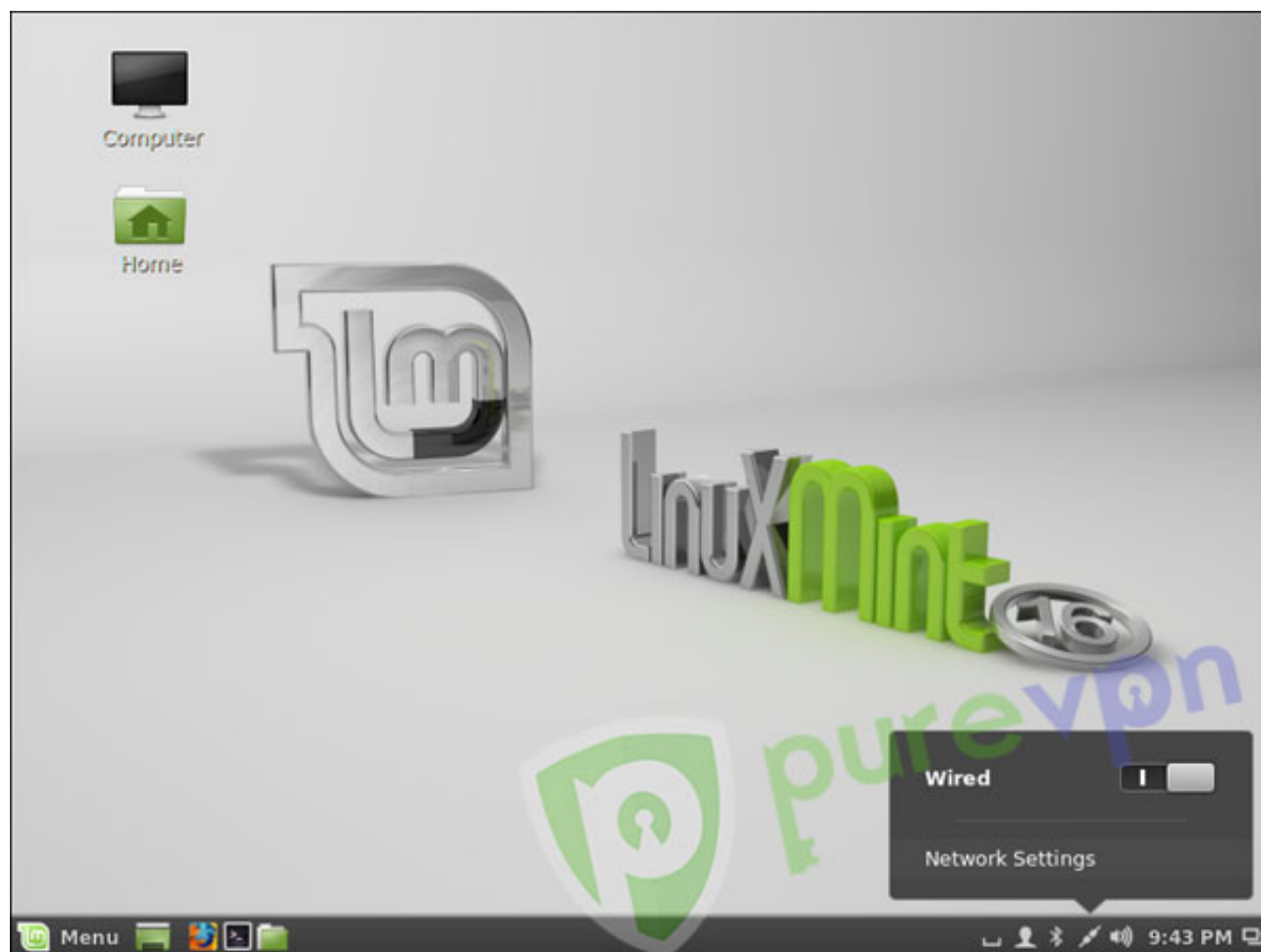
### Things to Consider:

It is vital to consider the following before you begin:

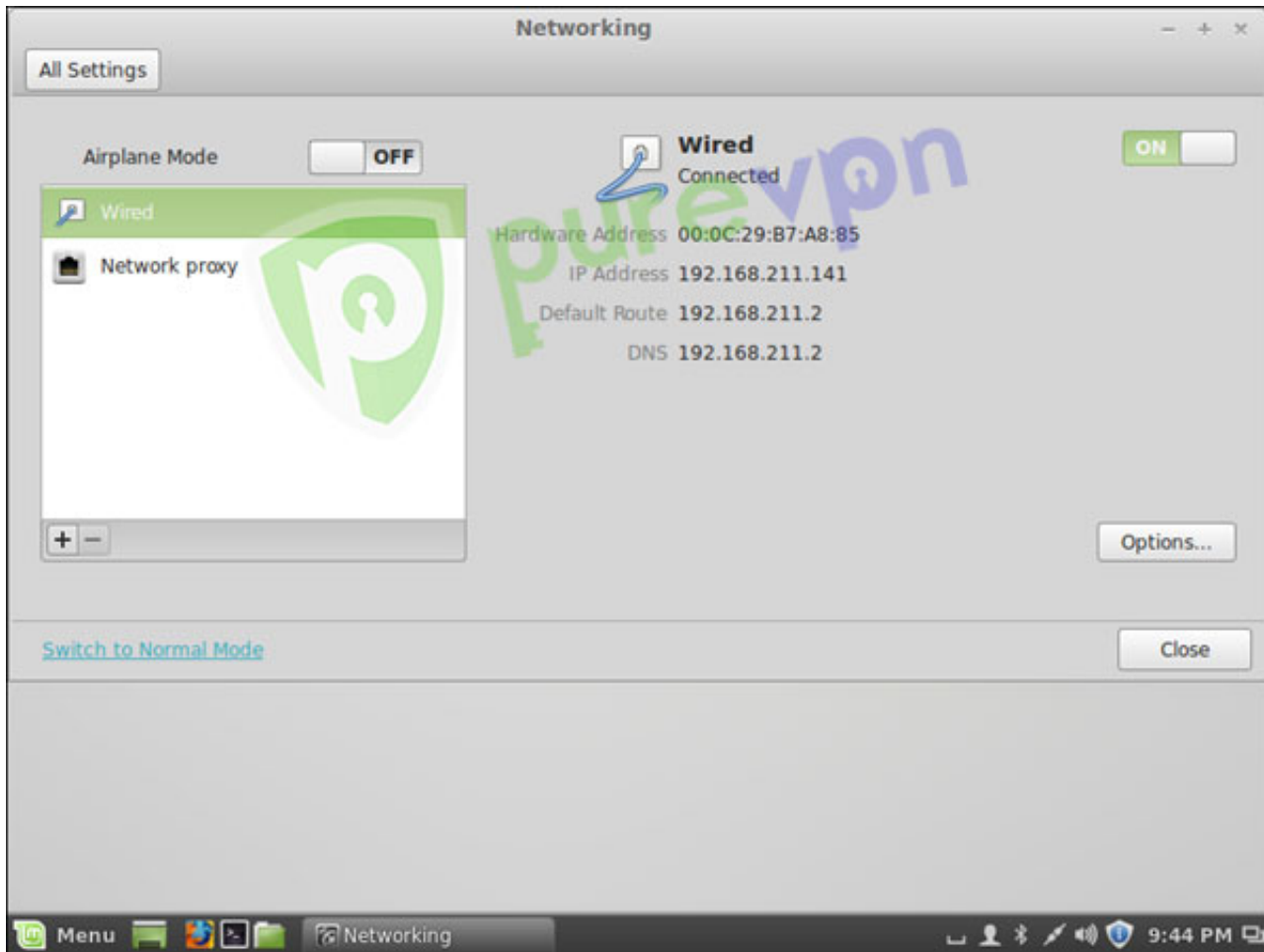
- Ensure your internet connection is working.
- A device powered by Linux Mint.
- A Premium PureVPN account (if you haven't bought it yet, [click here](#) to buy)

### To Configure PPTP follow below Steps:

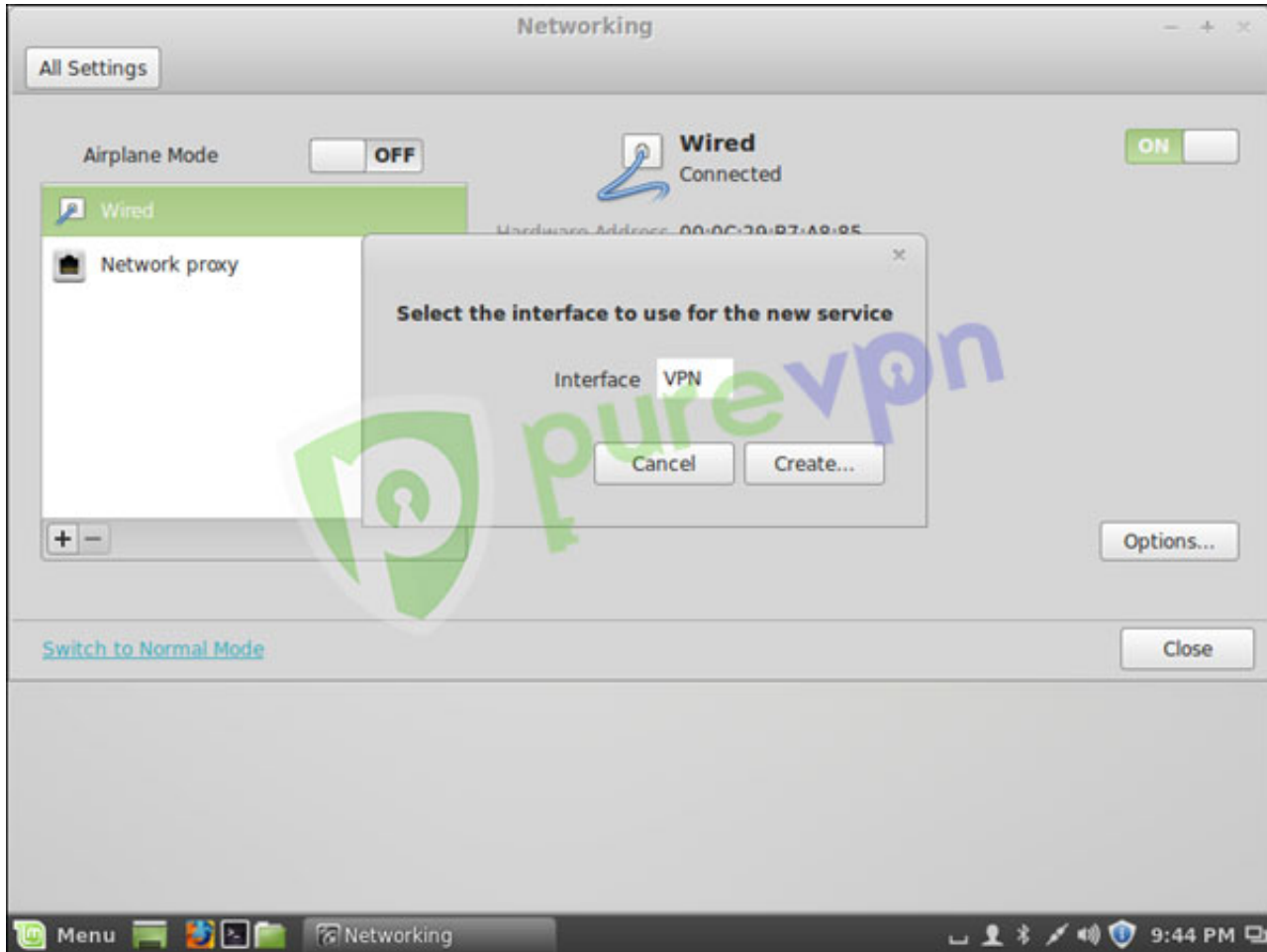
1 Click on **“Network Connection”** and select **“Network Settings”**



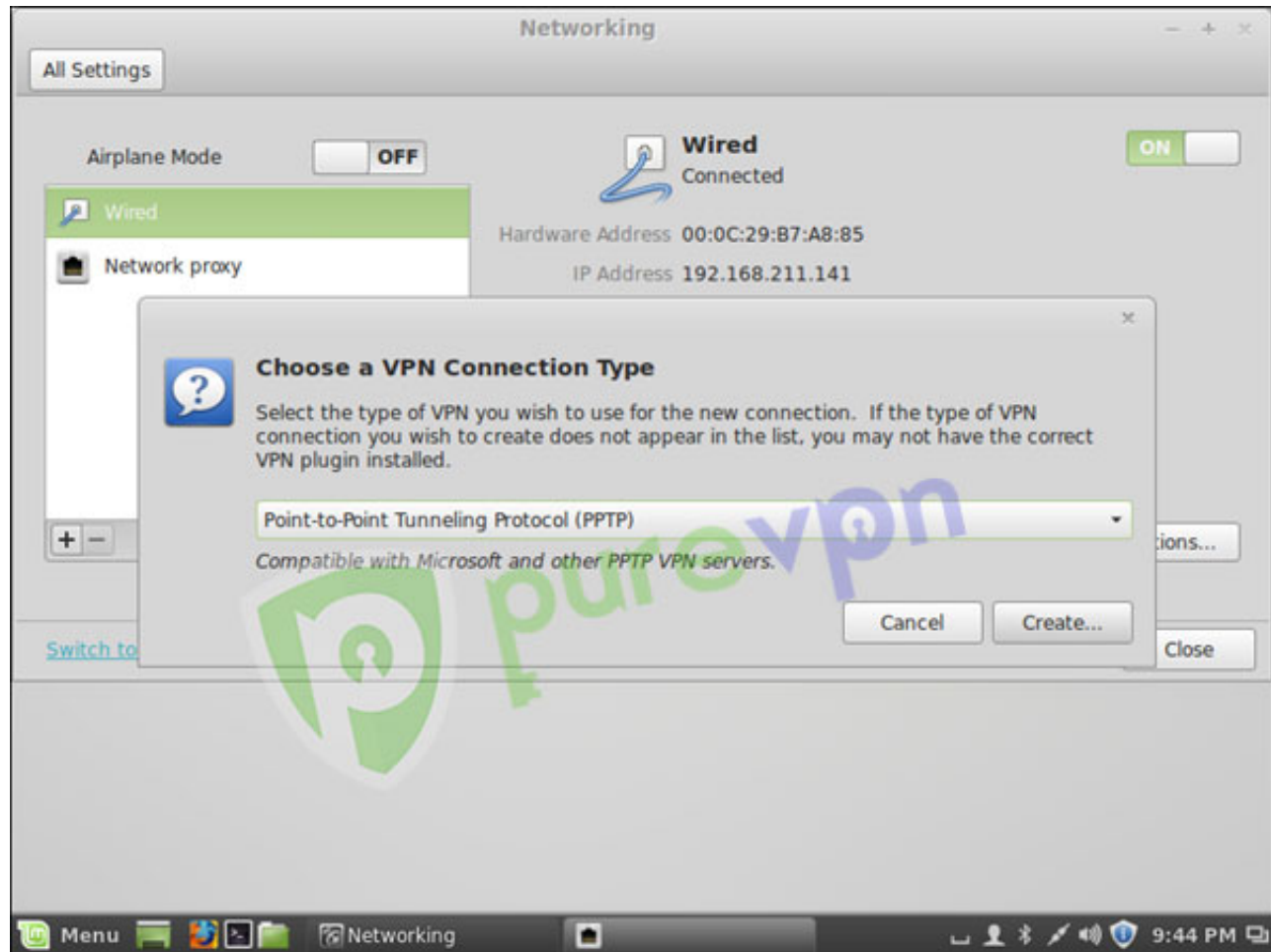
2 Click on “+”



3 Click “Create”

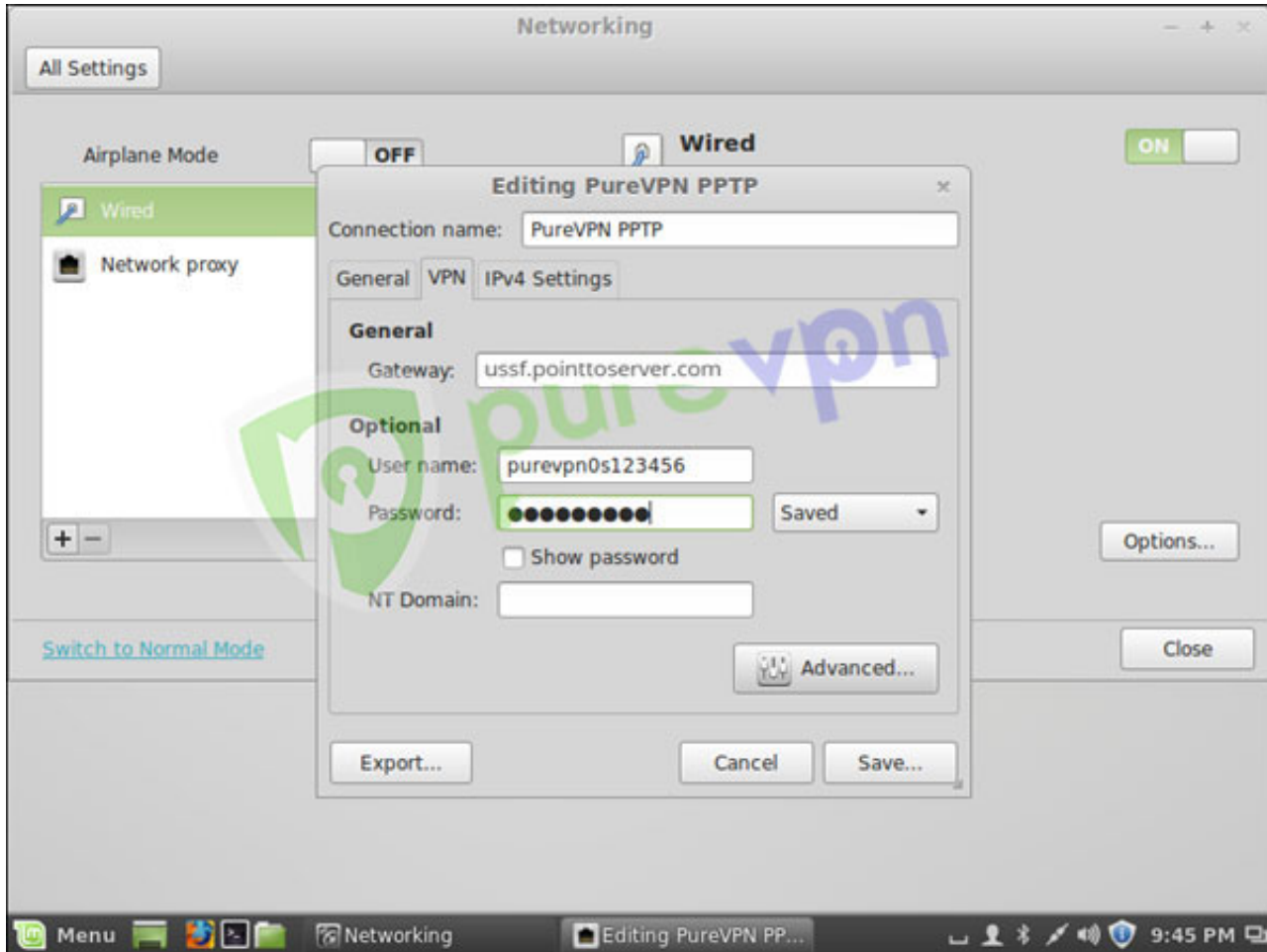


4 Select **“Point-to-Point Tunneling Protocol (PPTP)”** and click **“Create”**



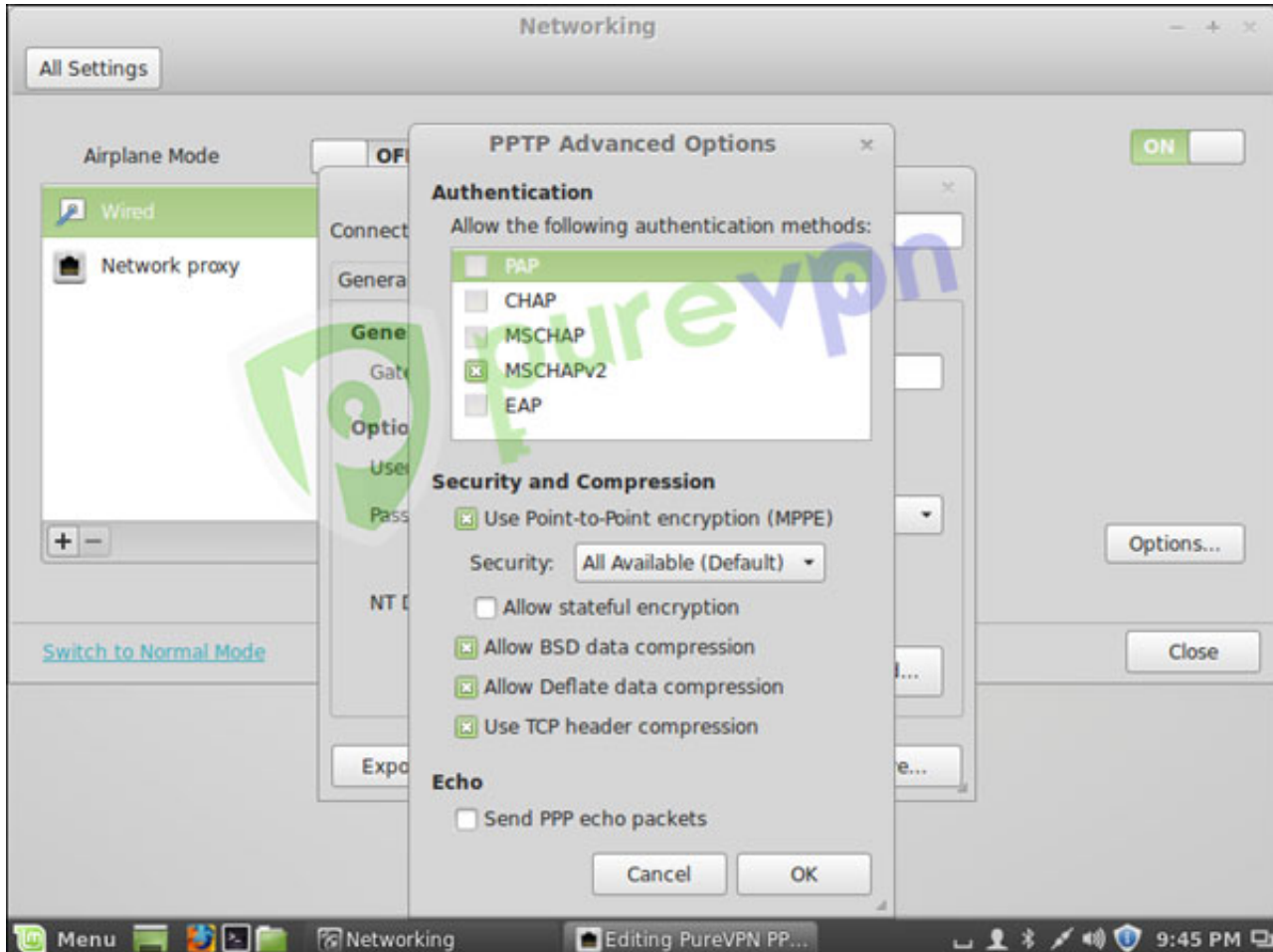
5 Insert the following info:

- Insert “**Connection name:**” PureVPN PPTP
- Insert desired server in “**Gateway**”
- Click [here](#) to get the server list.
- Insert **Username** provided by **PureVPN**
- Insert **Password** provided by **PureVPN**
- Click on “**Advanced**”

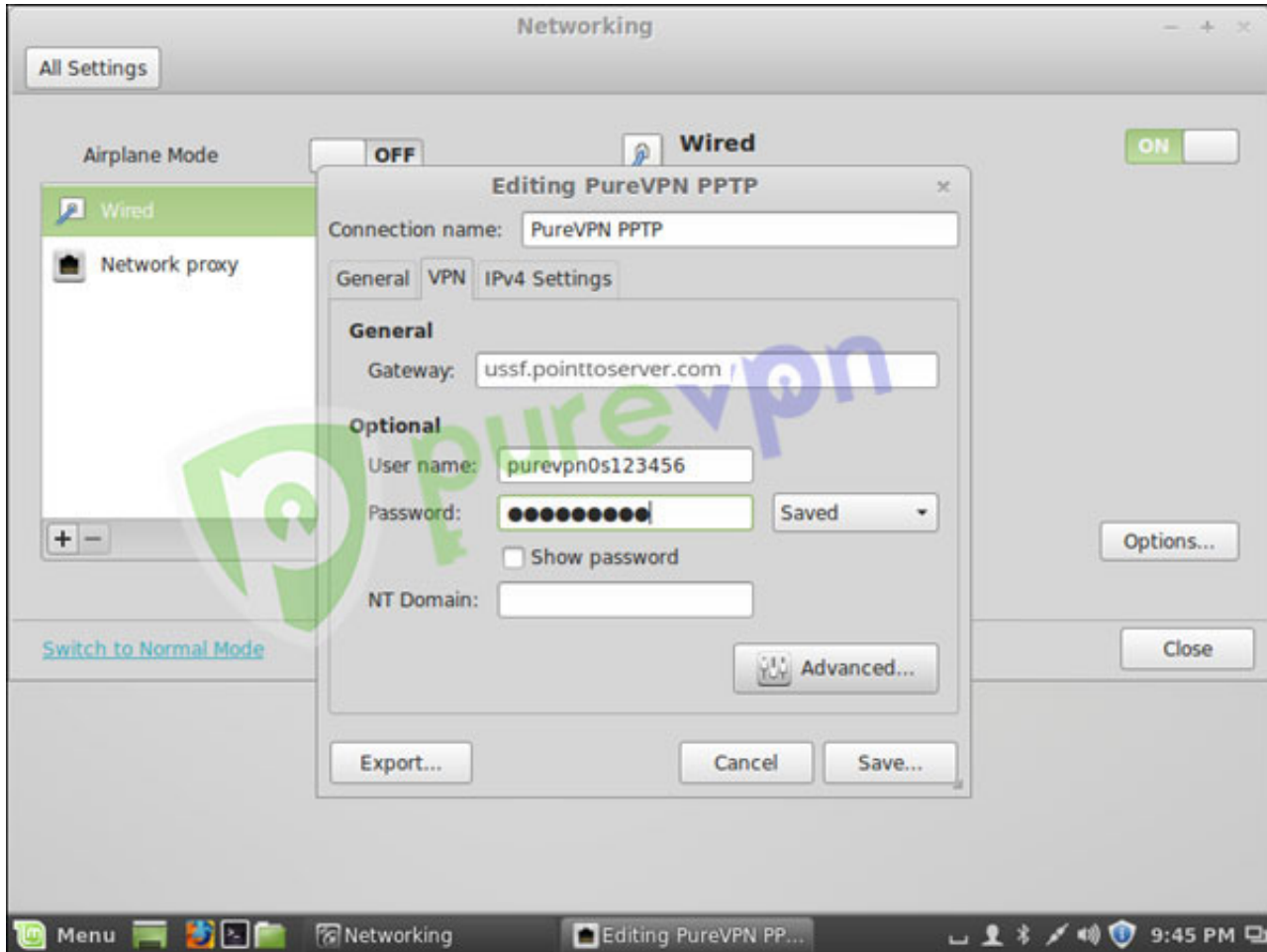


6 Select the following options

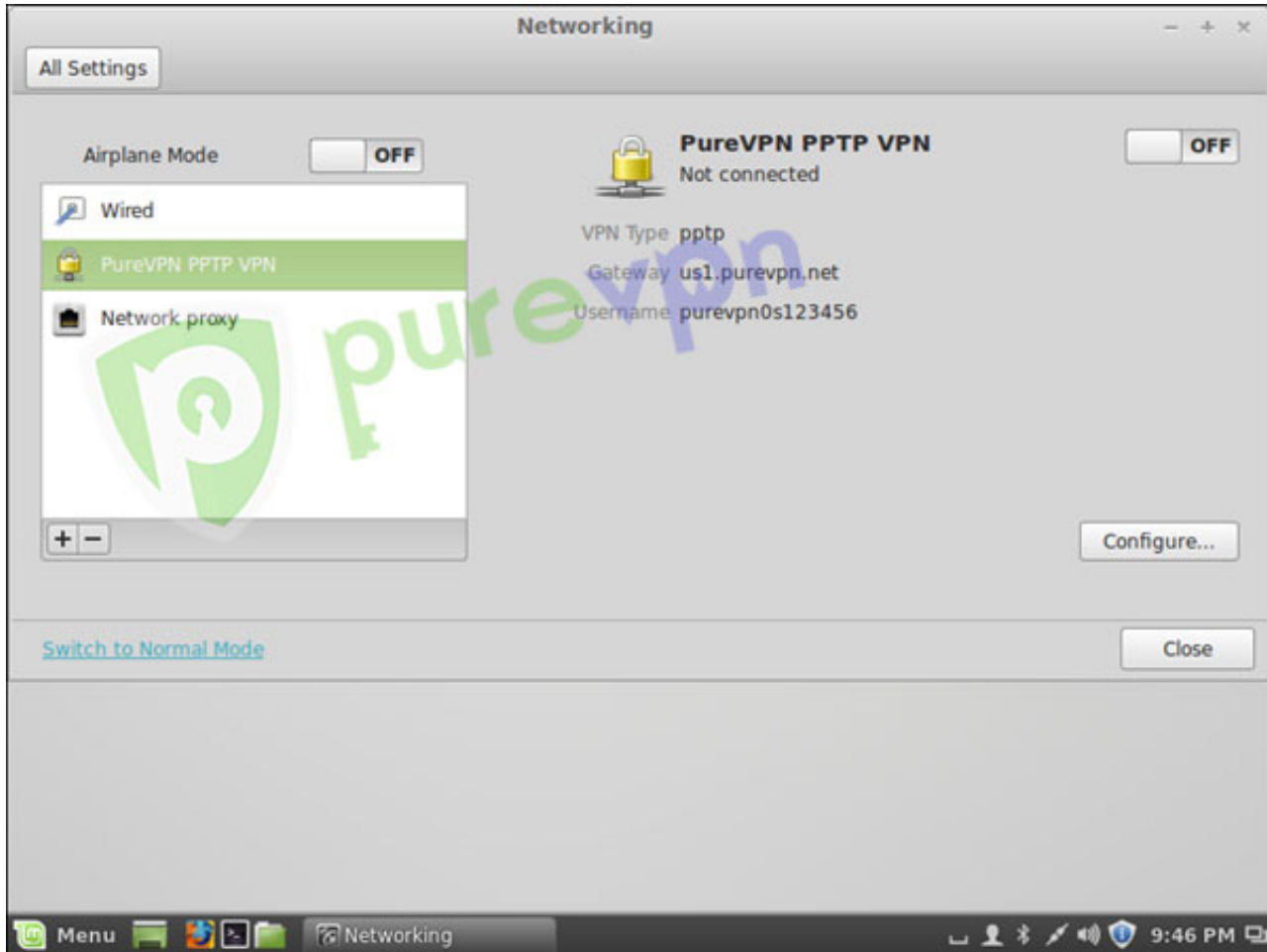
- Use Point-to-Point encryption (MPPE)
- Allow BSD data compression
- Allow Deflate data compression
- Use TCP header compression
- Click "OK"



7 Click on **“Save”**

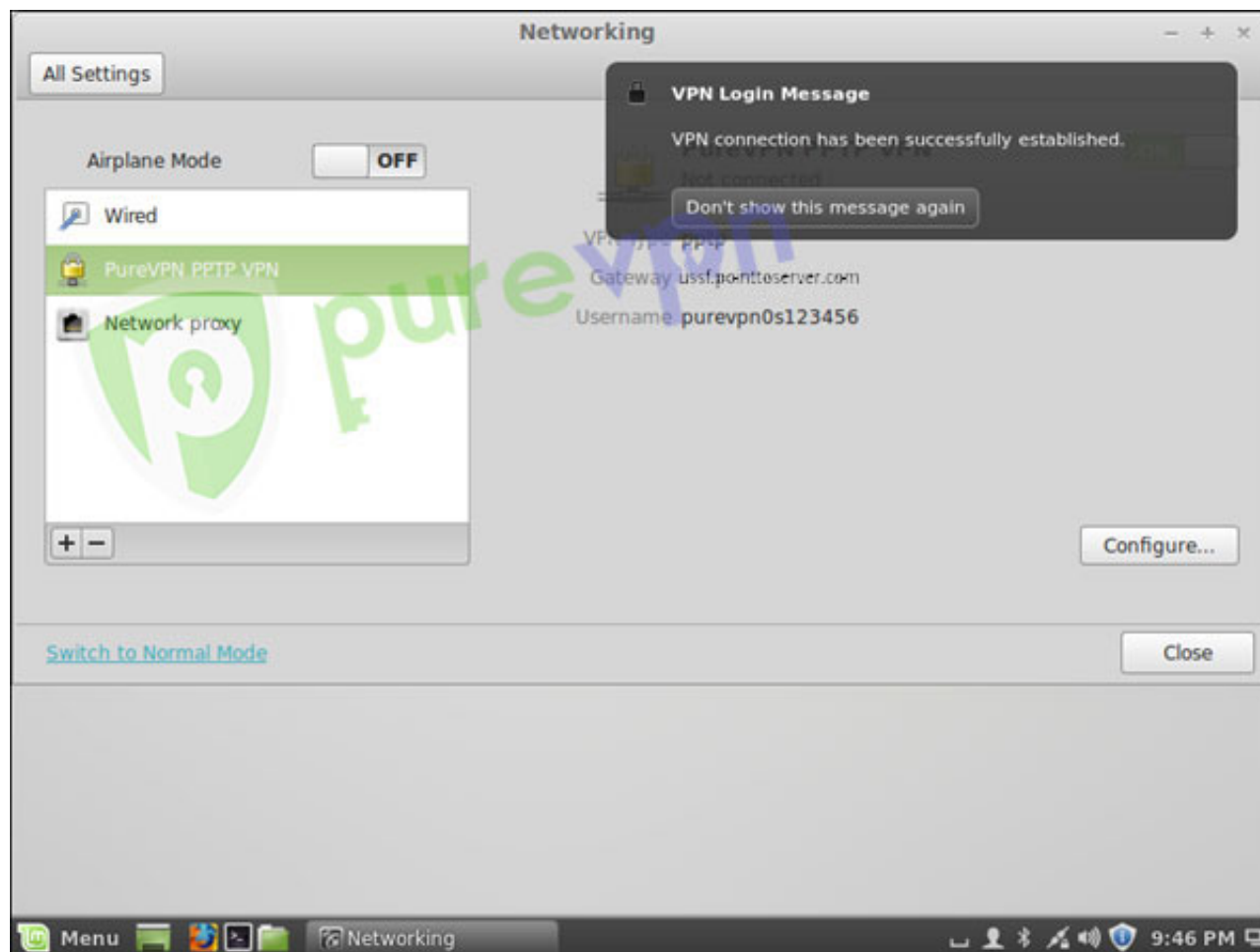


8 Click on **“PureVPN PPTP”** connection and click on switch to **“Turn ON”** VPN.



9 You are successfully connected now. **Enjoy the FREEDOM! ?**





To disconnect VPN, click on “**Network Connection Icon**” and click on switch to “**Turn OFF**”

**Caution:** If you are looking for higher security, then please follow this [guide to disable your IPv6](#)

## PureVPN Support

Solution of Your Problems

<https://support.purevpn.com>

---

Please use the comment box for your suggestions & feedback. For additional help, please submit [support ticket](#) with errors and screen shots (if possible) **OR** Contact our 24/7 live chat.