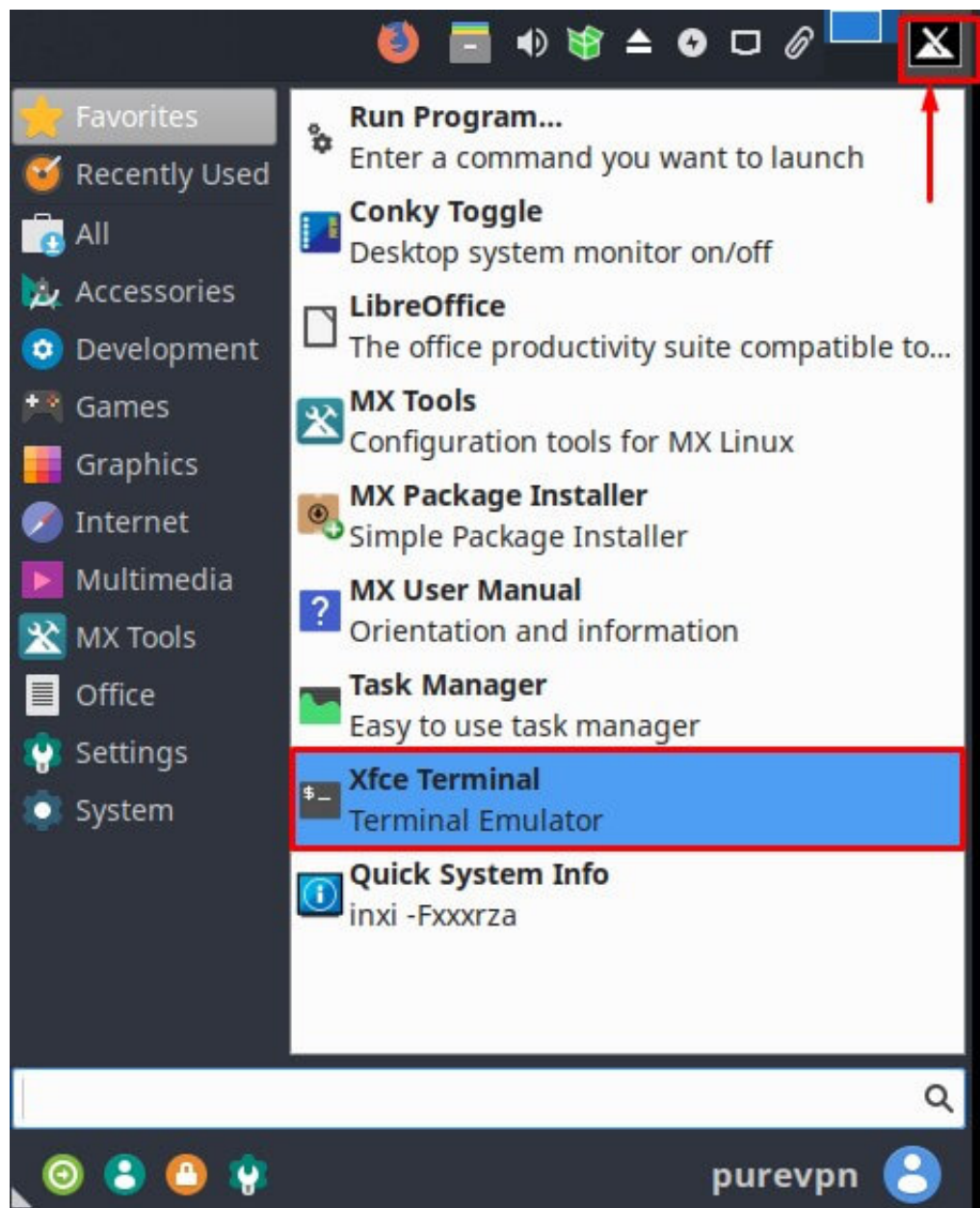


How to Setup PureVPN L2TP on MX Linux 19.1

The following is required for L2TP-VPN client to work on MX Linux:

- A working installation of MX Linux (This guide uses MX Linux 19.1 64-bit)
- A device with internet access.
- Own a premium PureVPN account (If you do not already own one, you can buy a subscription from [here](#))

1 Go to the Launcher option and select/open the “Xfce Terminal” from there

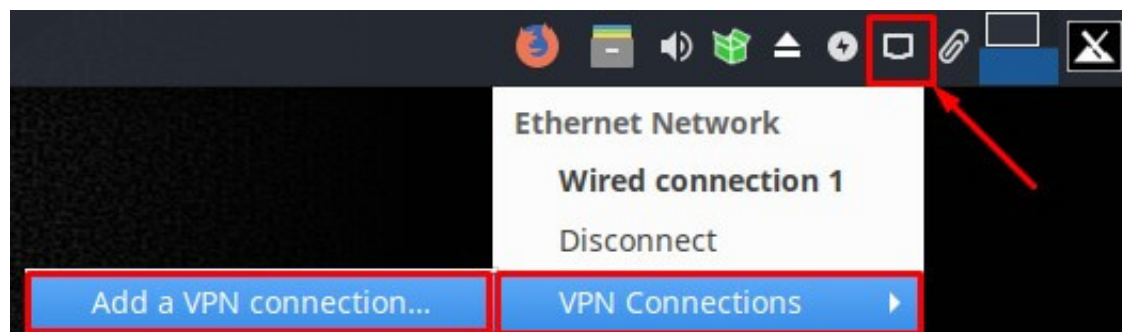


2 Now you need to install L2TP packages. Type the following commands one by one:

- **sudo apt-get update**
- **sudo apt-get install network-manager-l2tp-gnome network-manager-strongswan libstrongswan-standard-plugins libstrongswan-extra-plugins**
- **sudo apt-get install network-manager-l2tp**
- **sudo apt-get install xl2tpd**

3 Click on “Ethernet Network Connections” Icon then “VPN Connections” and then select “Add a

VPN Connection...” option.



4 Select 'Layer 2 Tunneling Protocol (L2TP)' from the drop-down list under the VPN Connection Type and click on "Create" button.



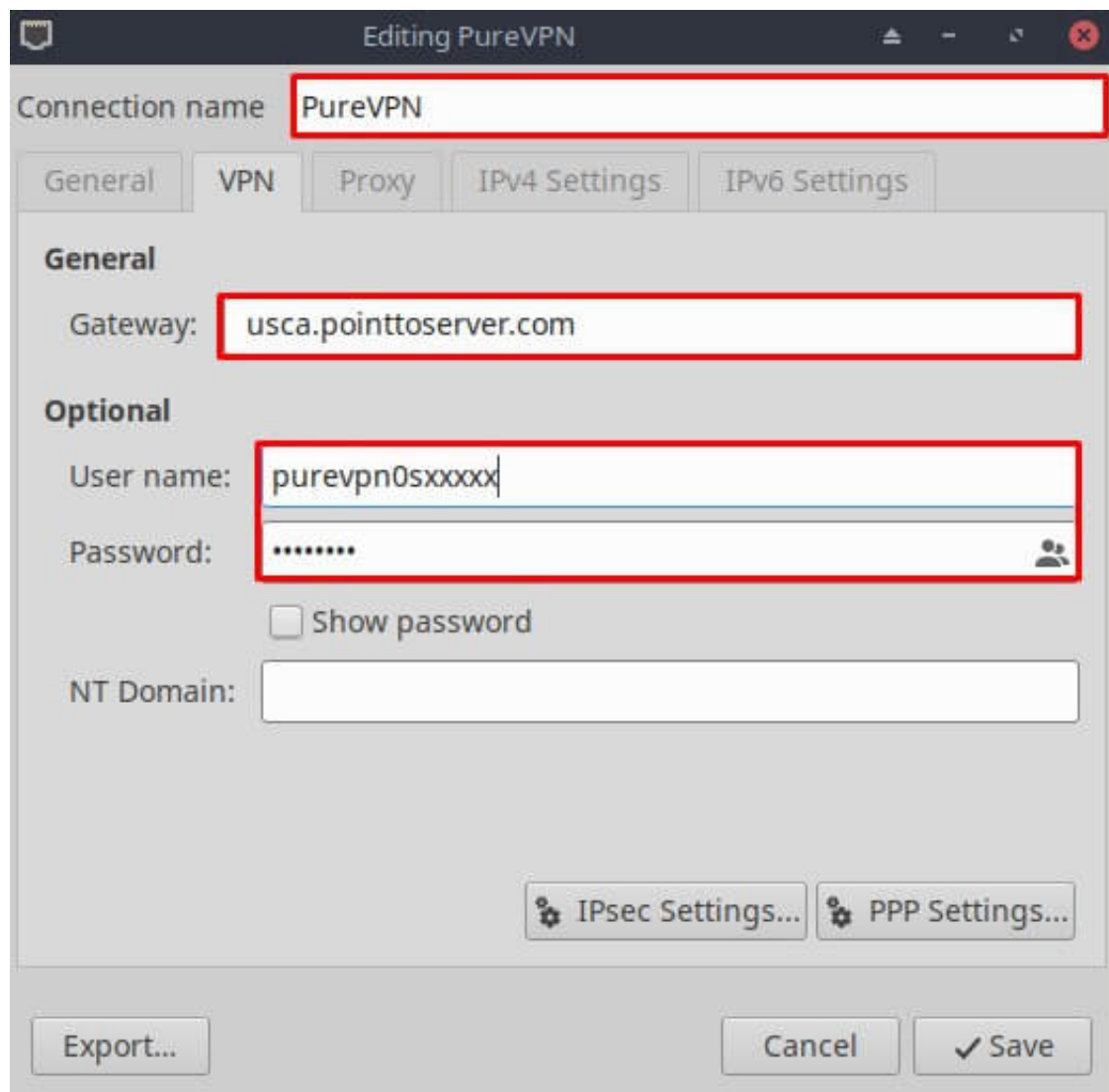
5 Insert the following info:

- Insert Connection name: PureVPN
- Insert Gateway: usca.pointtoserver.com (Here we use usca.pointtoserver.com you can also use your desired server address, [click here](#) to view the complete list)
- Insert Username provided by PureVPN
- Insert Password provided by PureVPN

PureVPN Support

Solution of Your Problems

<https://support.purevpn.com>



The screenshot shows a window titled "Editing PureVPN" with several tabs: "General", "VPN", "Proxy", "IPv4 Settings", and "IPv6 Settings". The "General" tab is active. The "Connection name" field is set to "PureVPN". The "Gateway" field is set to "usca.pointtoserver.com". The "User name" field is set to "purevpn0sxxxxx". The "Password" field is masked with "*****" and has a "Show password" checkbox below it. The "NT Domain" field is empty. At the bottom, there are buttons for "Export...", "Cancel", and "Save". There are also "IPsec Settings..." and "PPP Settings..." buttons.

6 Now, Go to the 'IPsec Settings...' option.

Check the 'Enable Ipsec tunnel to IPsec host'

Pre-share key: 12345678

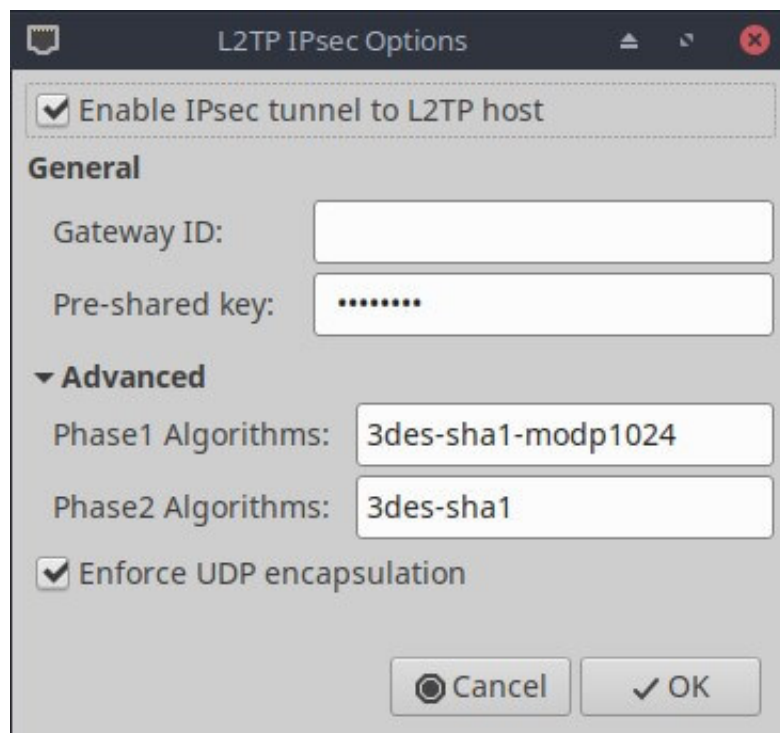
Then specify connection algorithms in Advanced section:

For phase 1= 3des-sha1-modp1024 and

For phase 2 = 3des-sha1

Enforce UDP Encapsulation: Unchecked

Click 'OK'



Now, go to the 'PPP Settings...'.

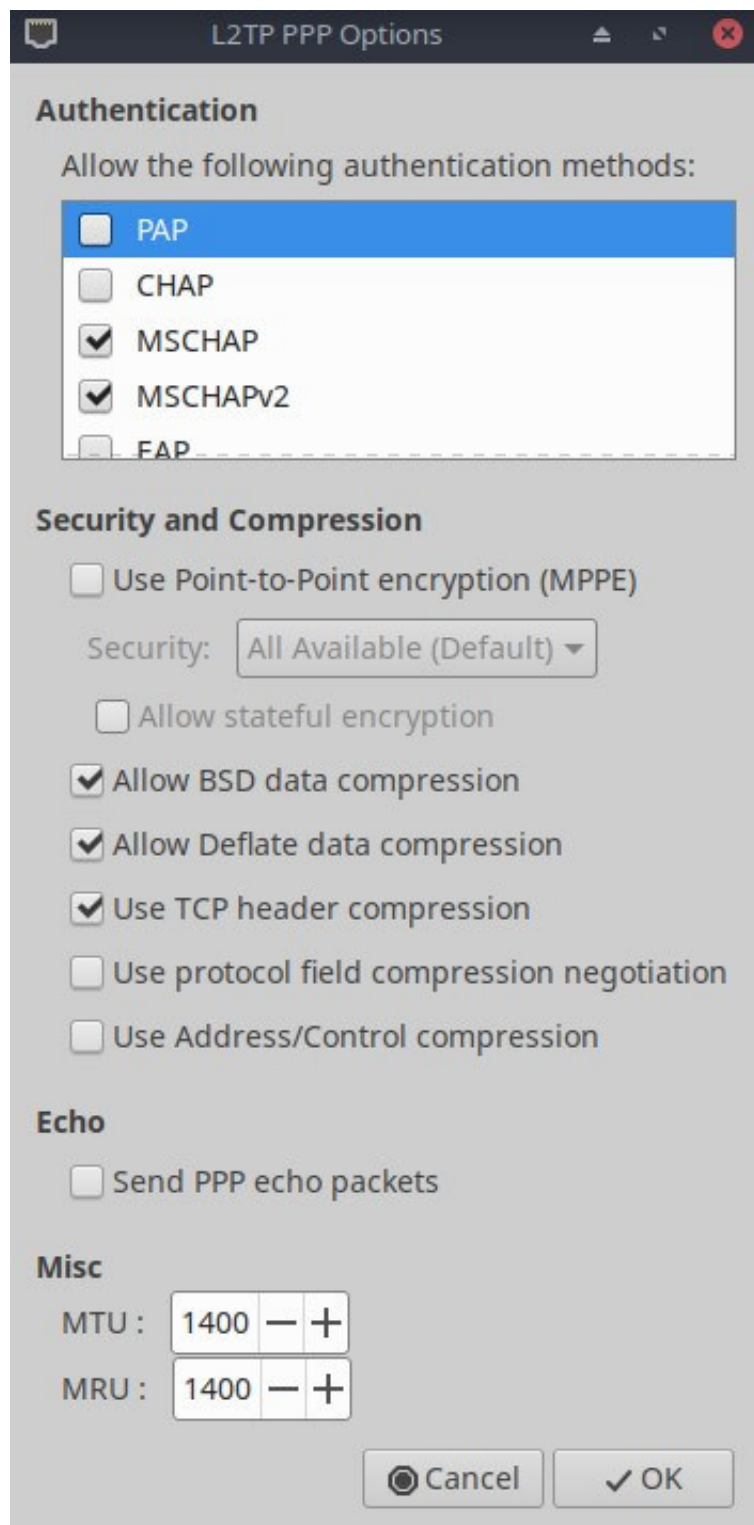
Only allow the following options:

- MSCHAP
- MSCHAP2

Also, select the following:

- Allow BSD data compression
- Allow Deflate data compression
- Use TCP header compression

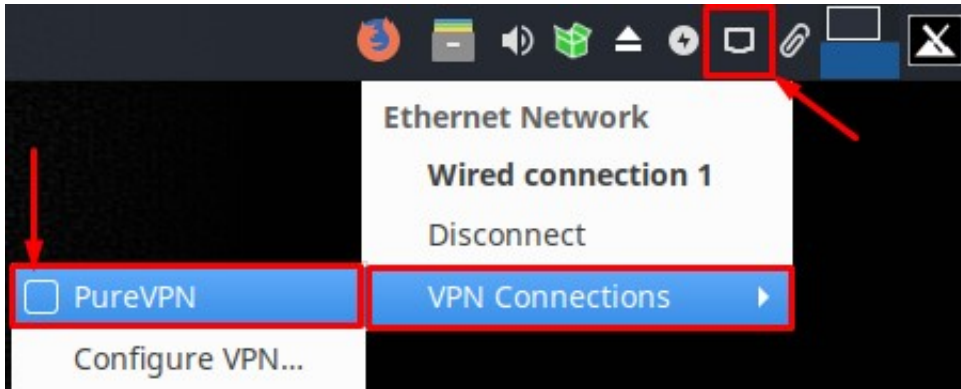
Click "OK"



7 Click “Save” and close the “Network Connections” window.

8 Now Click on Ethernet Network Connections” Icon, go the “VPN Connections” tab and click on

the newly created VPN connection, to connect to PureVPN



9 You are now connected to PureVPN!

