

How to Setup PureVPN Manually on Windows 8 (SSTP)?

Things to Consider:

Before you begin, please make sure that:

- You have a working internet connection
- Windows Supported Device.
- A Premium PureVPN account (If you haven't bought yet [click here](#) to buy)

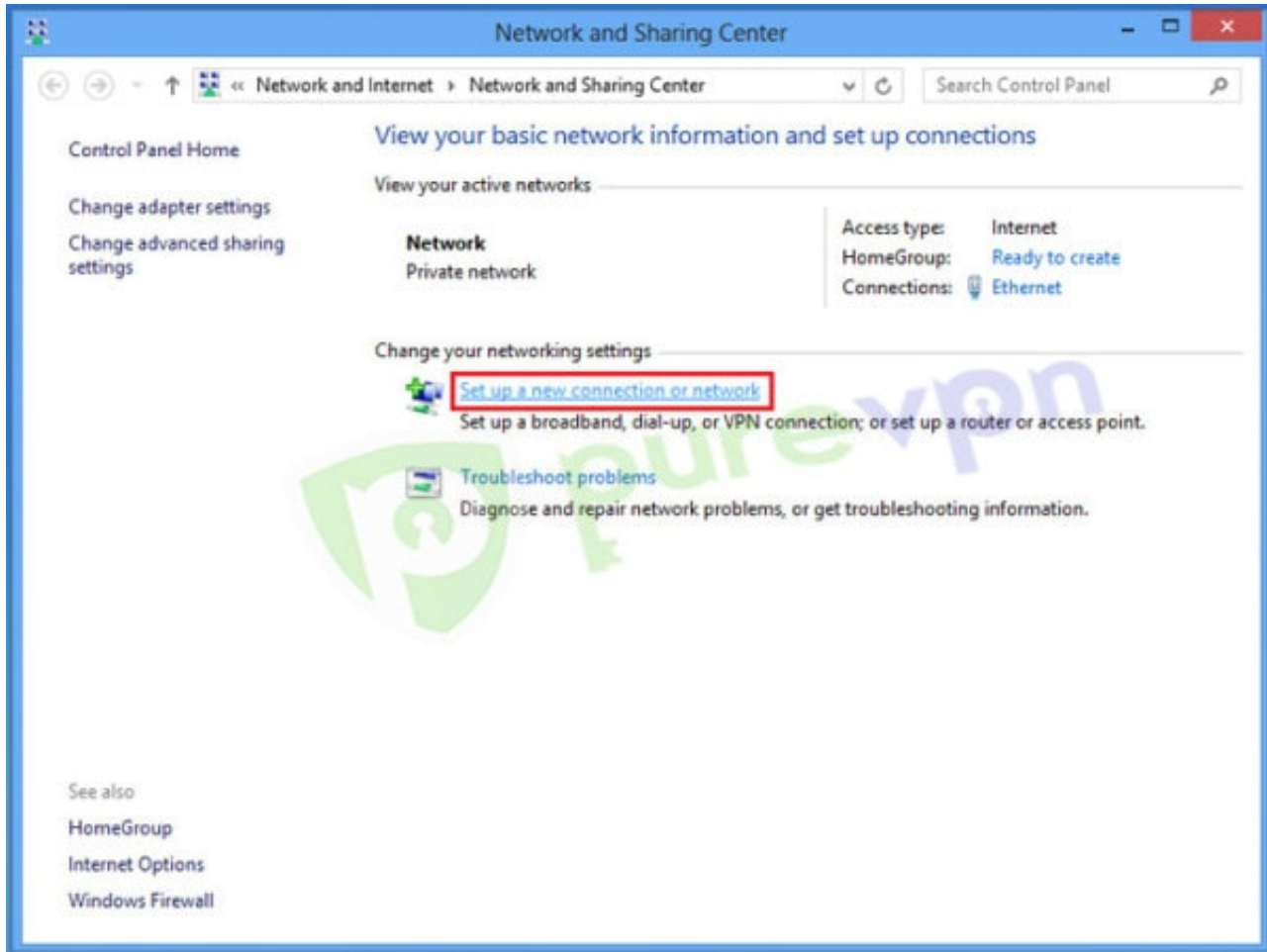
Follow these simple steps to configure PureVPN on Windows 8:

Note: We have just launched New PureVPN Windows Software BETA version. If you need guide on BETA version [Click Here](#).

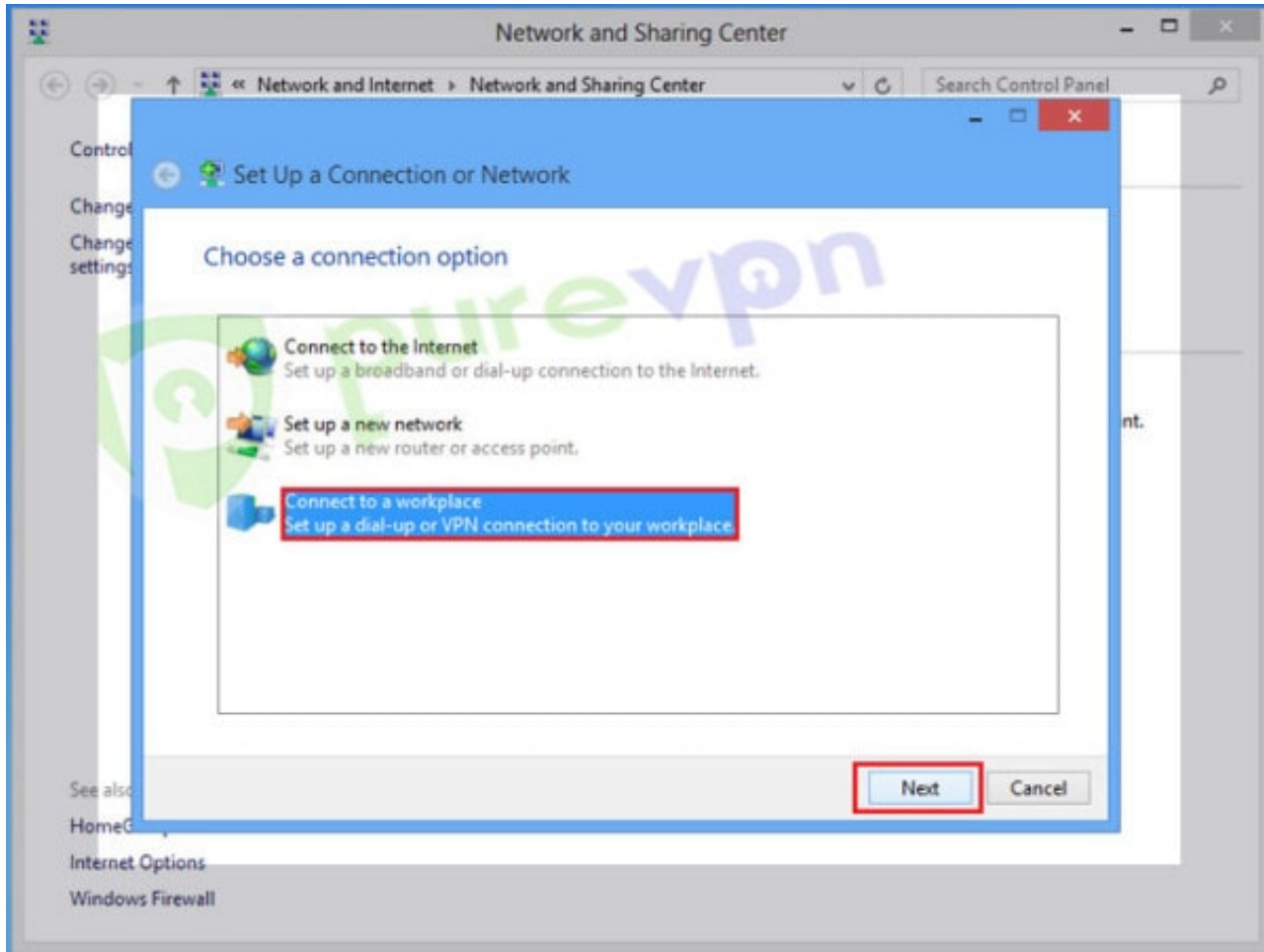
1 Right click on “**Lan / Wifi icon**” from System tray and select “**Open Network and Sharing Center**”



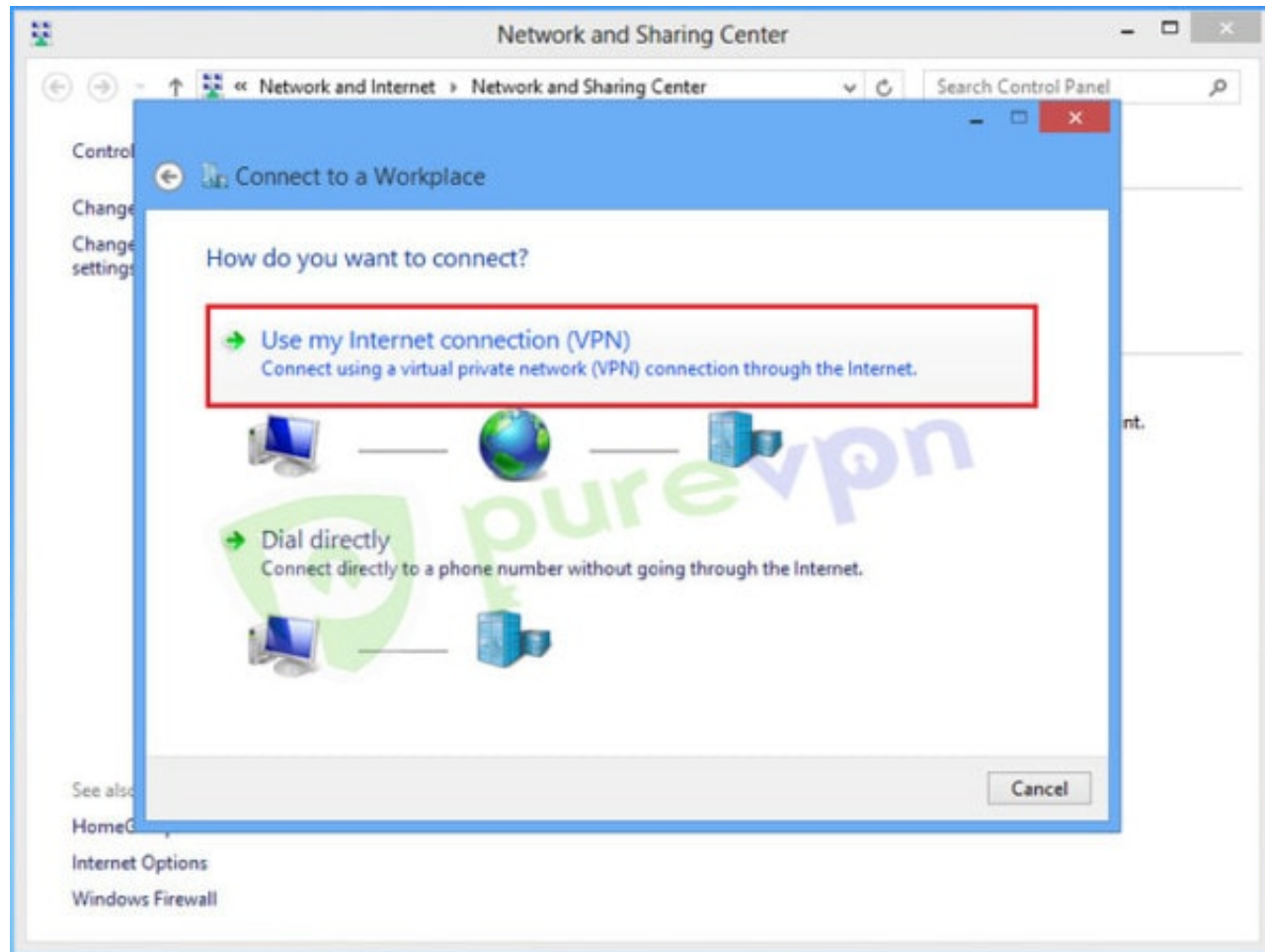
2 Click on “**Set up a new connection or network**”



3 Select **“Connect to workplace”** and click **“Next”**

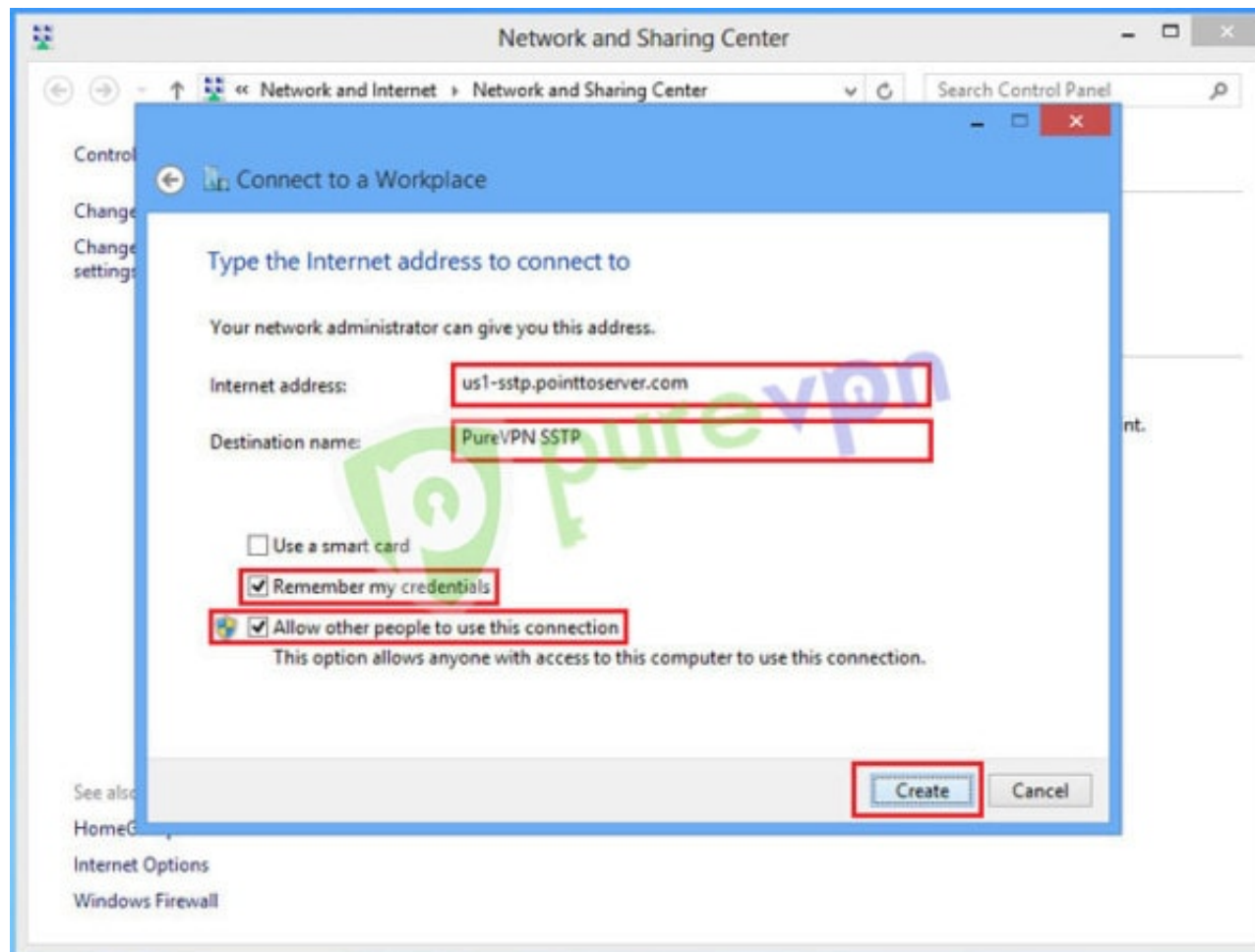


4 Select “Use my Internet connection (VPN)”



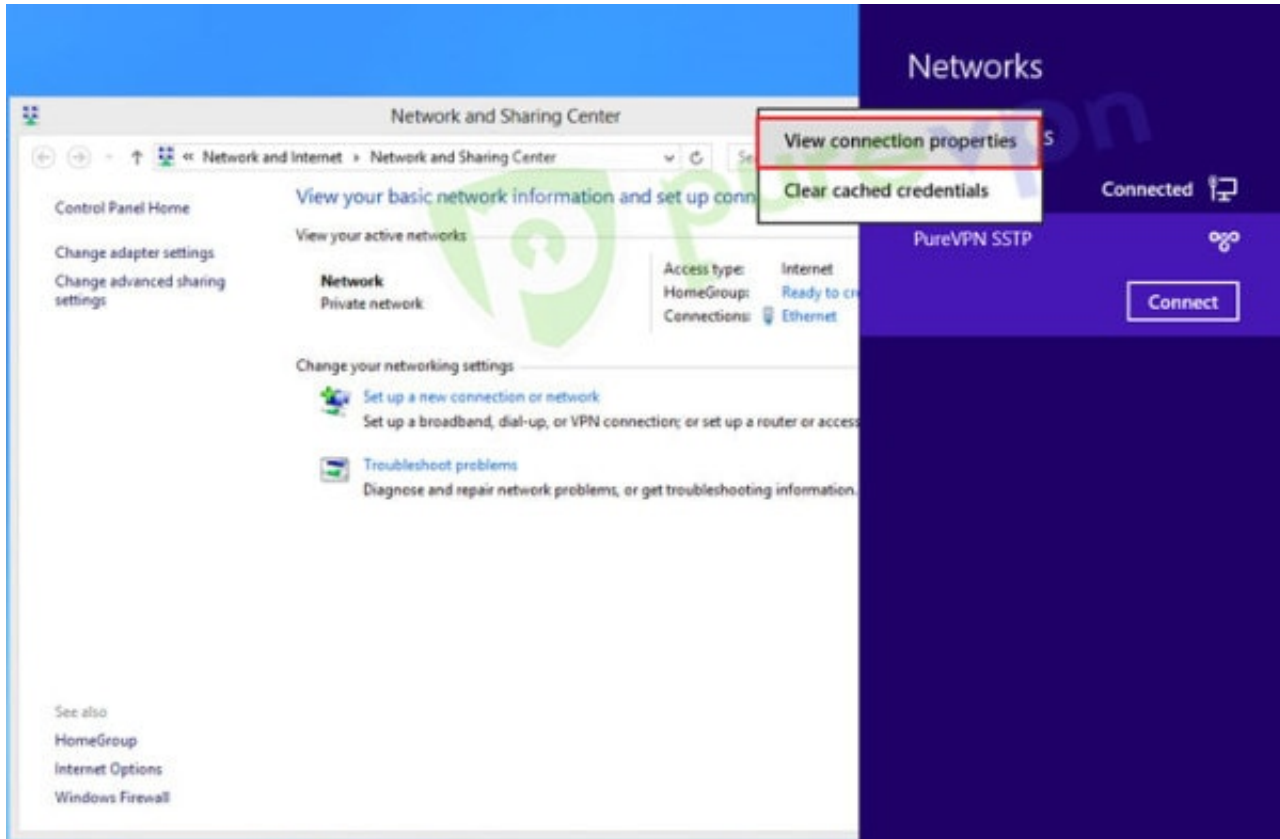
5 Insert the following info:

- Insert desired server address / IP. [Click here to get the server list](#)
- Insert destination name as PureVPN SSTP or PureVPN US etc
- Select "Remember my credentials"
- Select "Allow other people to use this connection"
- Click "Create"

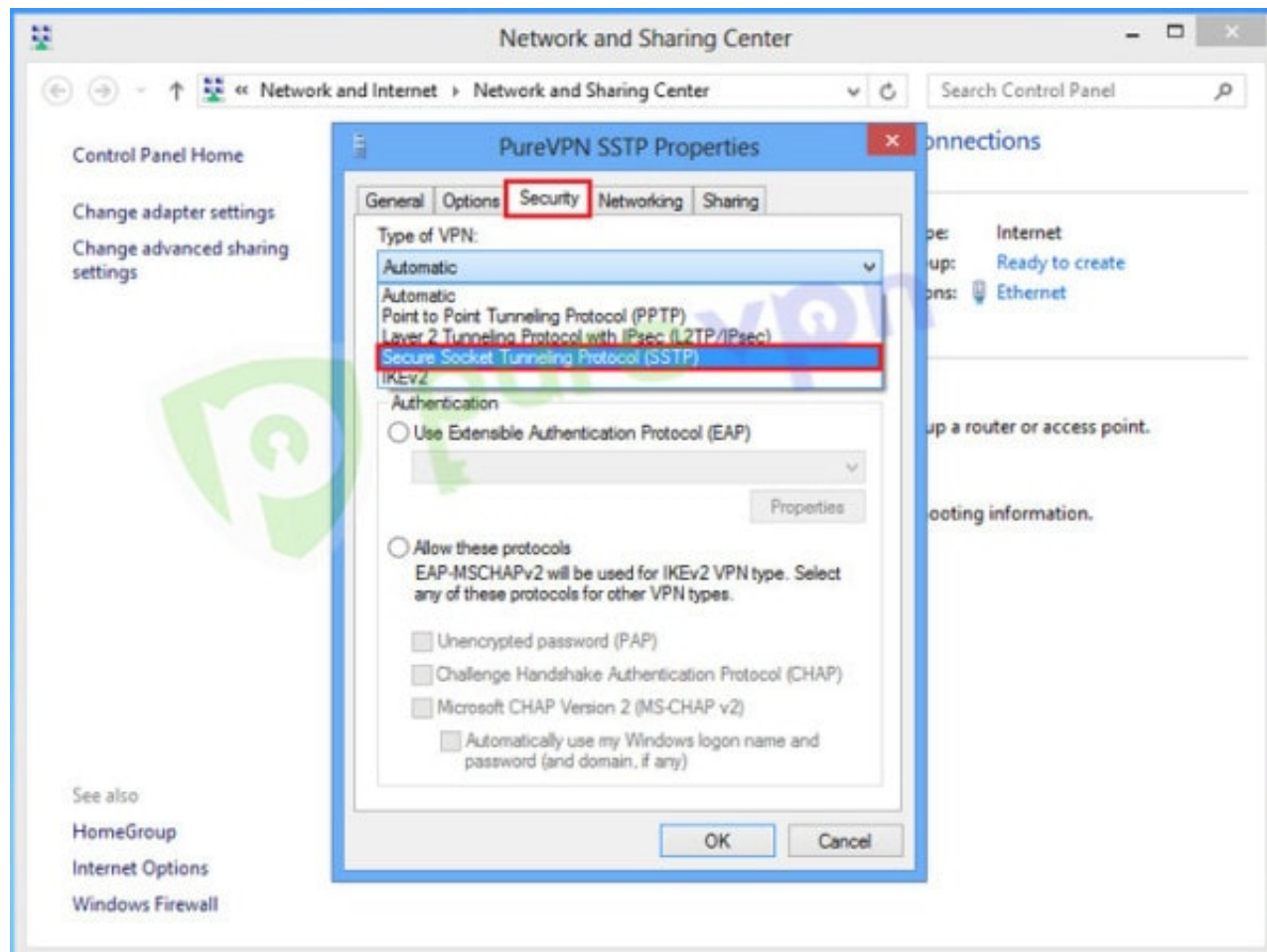


6 Right click on “**PureVPN SSTP**” connection and select “**View connection properties**”

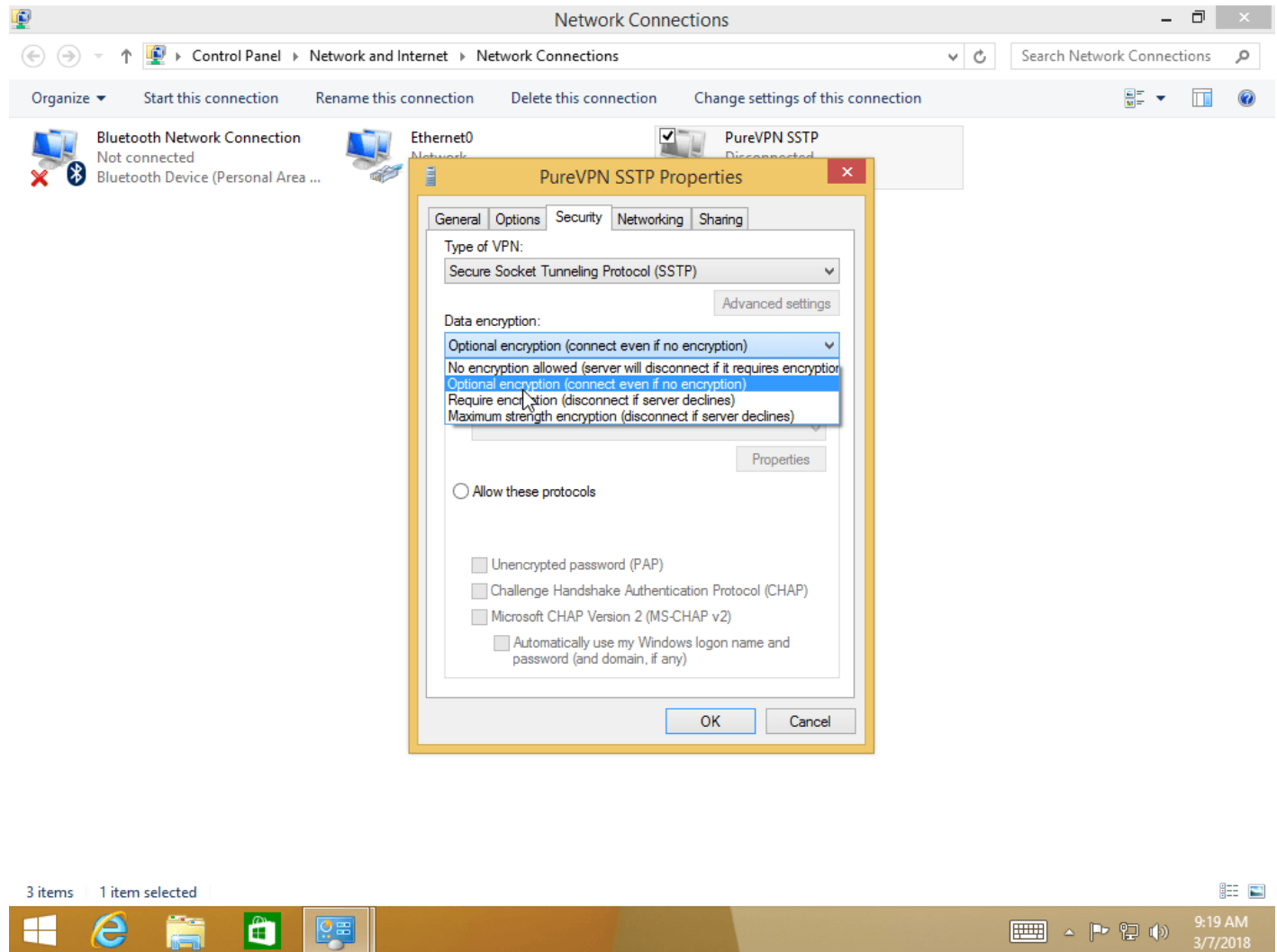
Note: If you are on Windows 8.1, then click on “Change Adapter Settings” from the “Network and Sharing Center, right click on PureVPN SSTP connection, select Properties



7 Click on Security tab and select “**Secure Socket Tunneling protocol (SSTP)**”

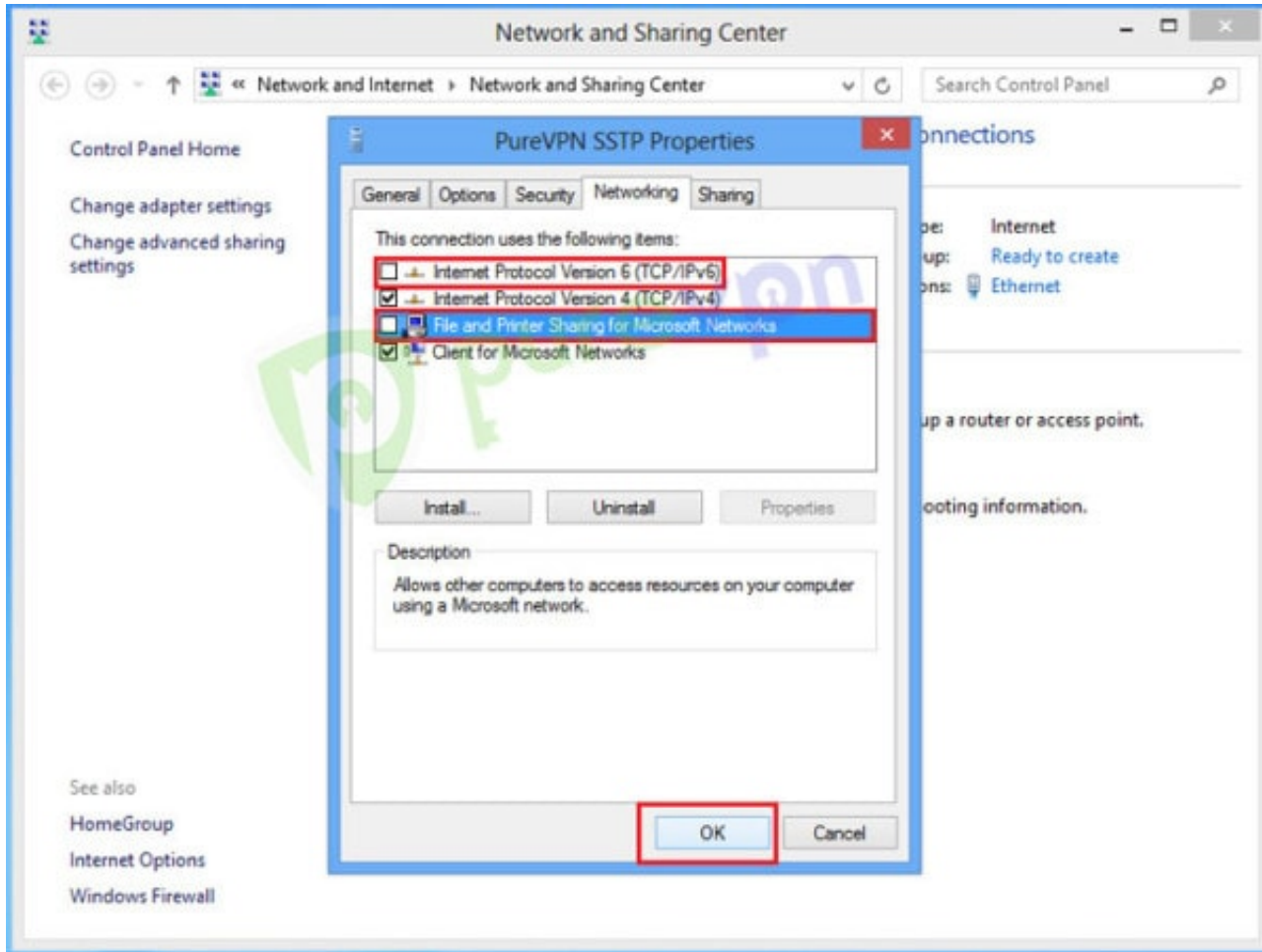


8 Select desired encryption from “Data encryption” drop down menu

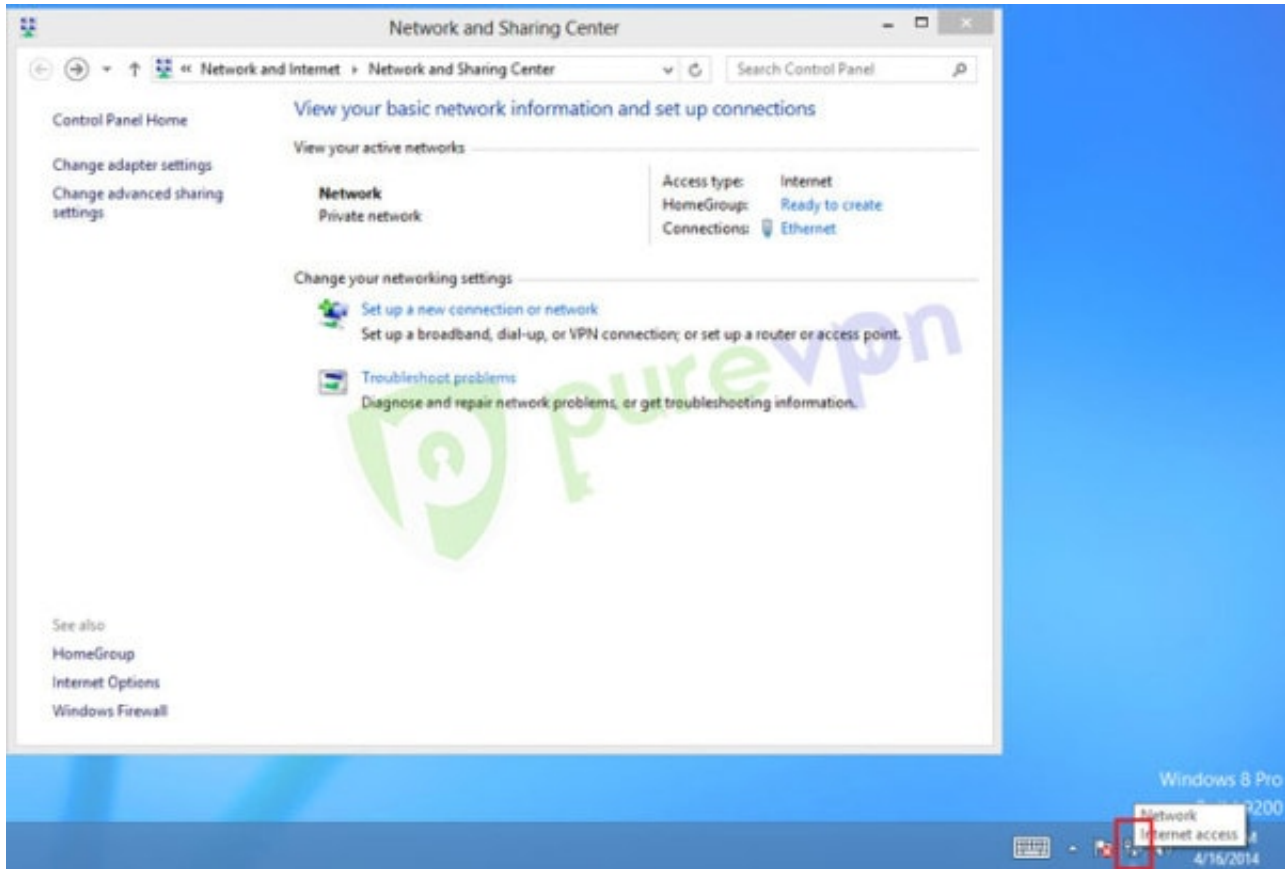


9 Insert the following info:

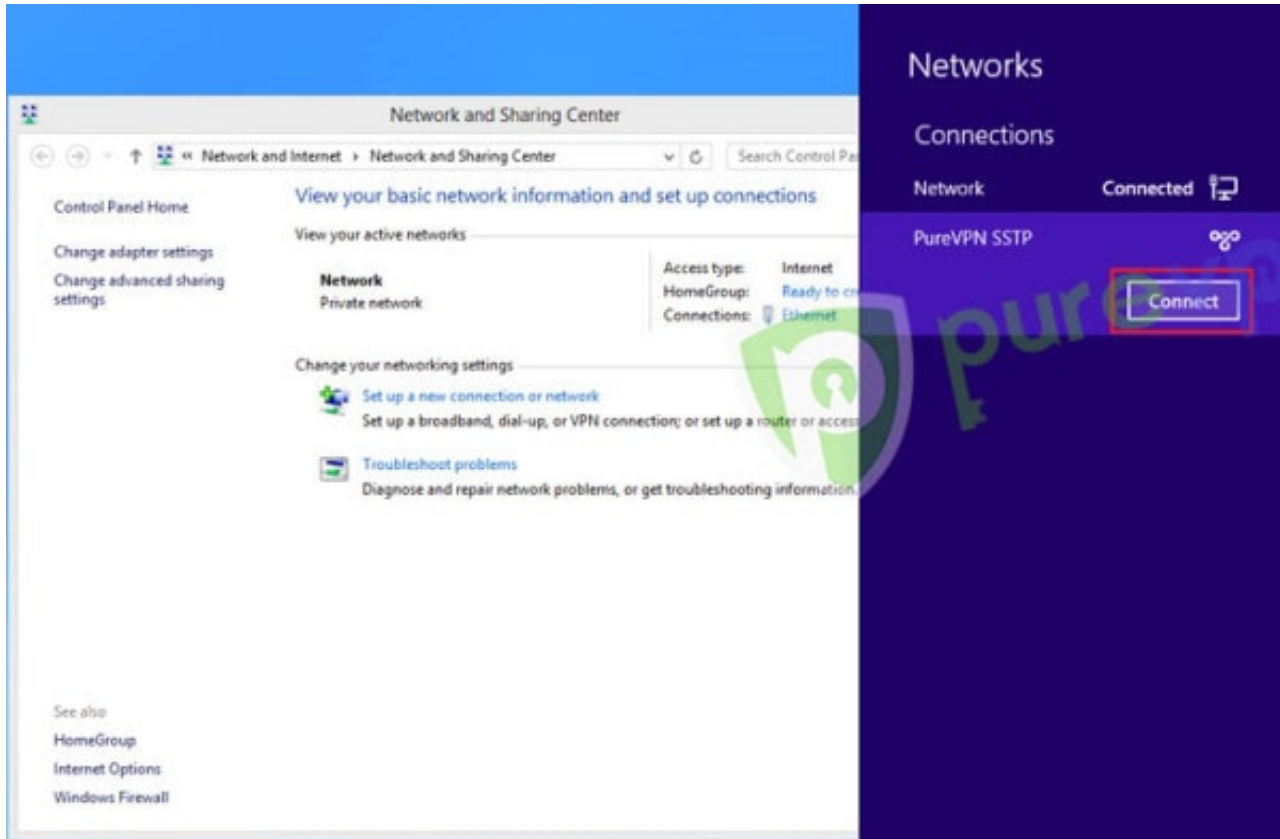
- Click on “**Networking**” tab
- Uncheck “**Internet Protocol Version 6 (TCP/IPv6)**” and “**File and Printer Sharing for Microsoft Networks**” then
- Click “**OK**”



10 Click on **Wifi / Lan** icon from System tray.

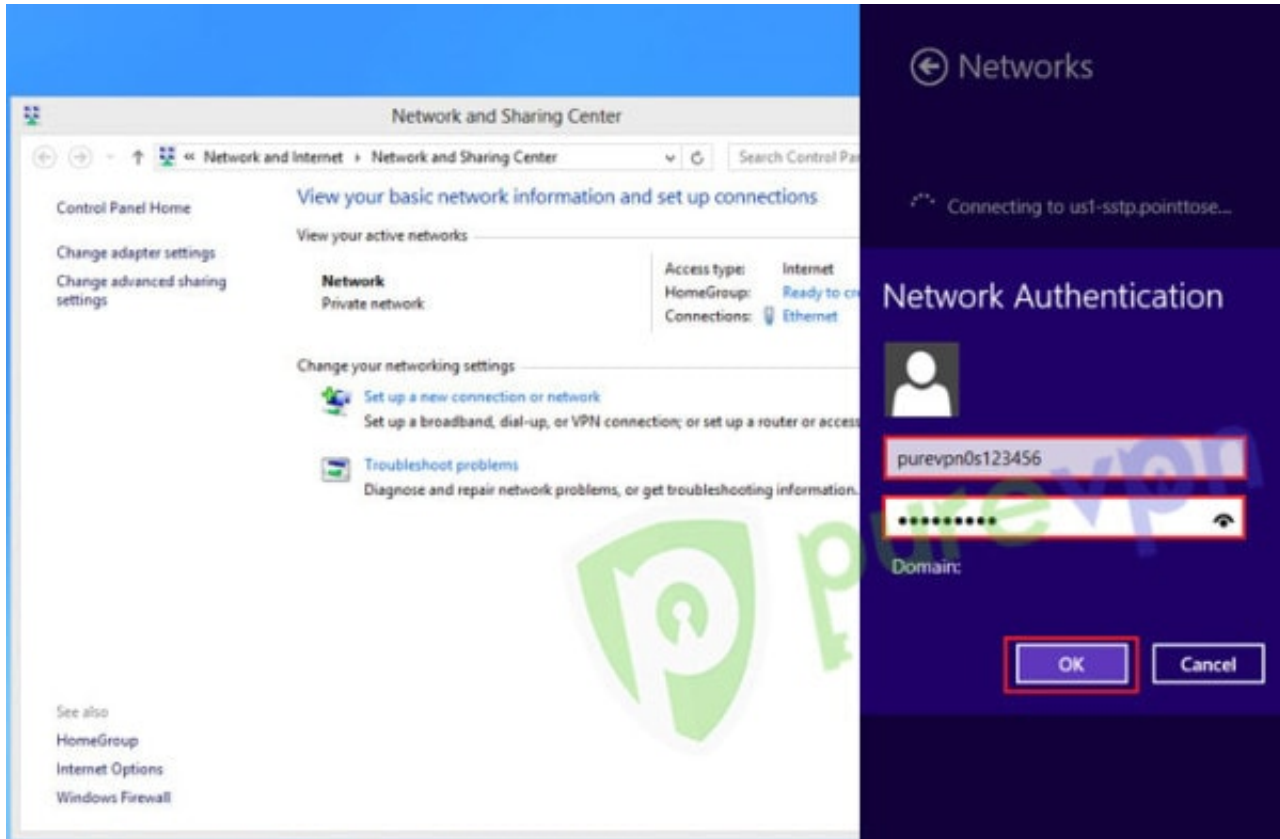


11 Click on PureVPN SSTP connection and click **“Connect”**

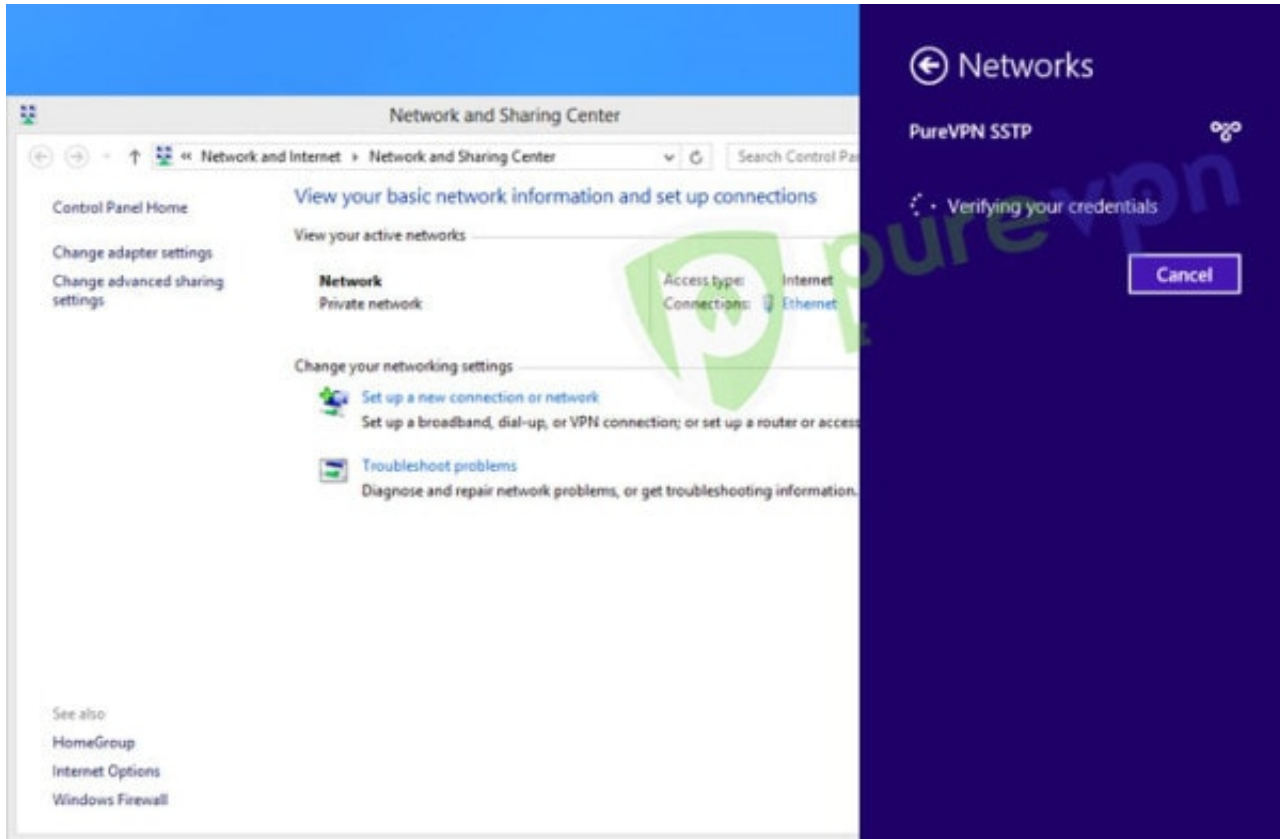


12 Insert your **Username and Password** provided by PureVPN then Click **“OK”**

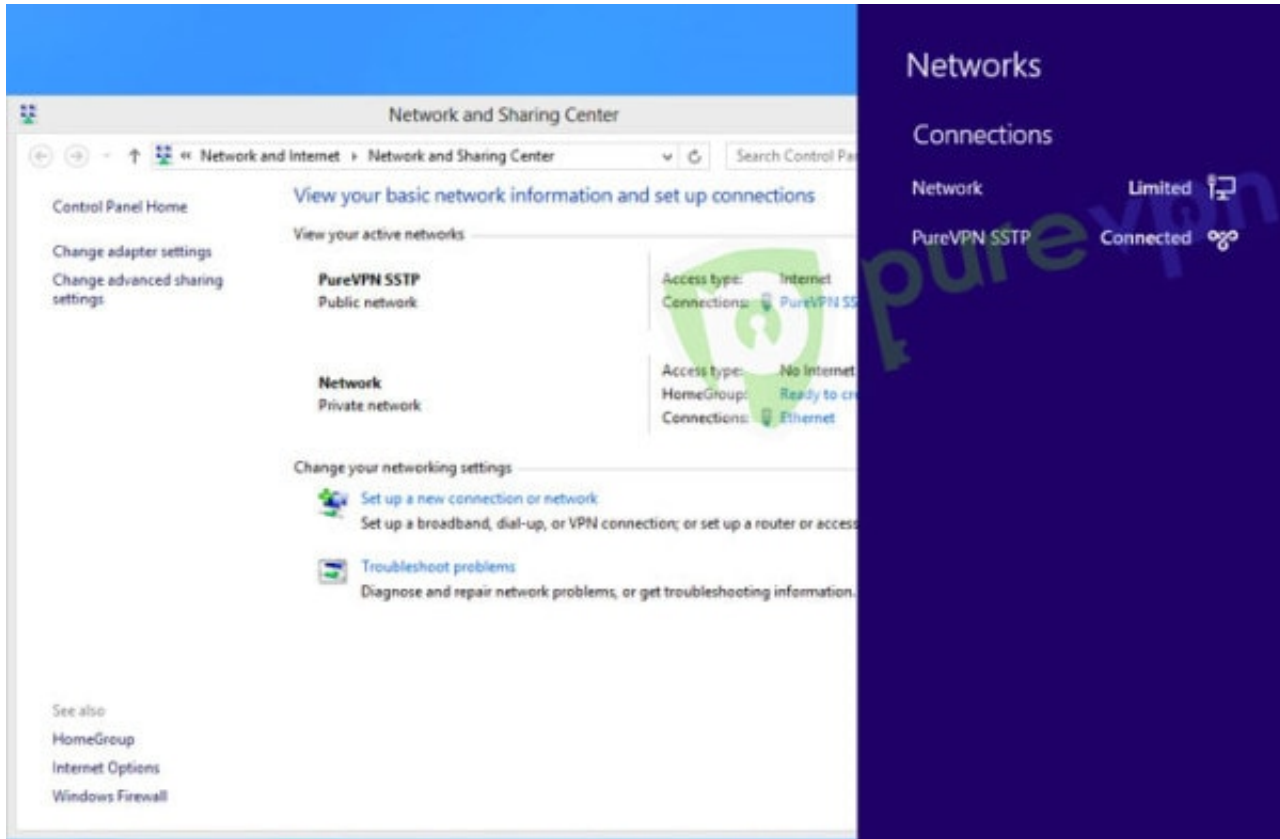
Important Note: Please always remember your PureVPN username & password is different from your Website Member Area email address & Password.



13 VPN connection will establish after verifying account details.



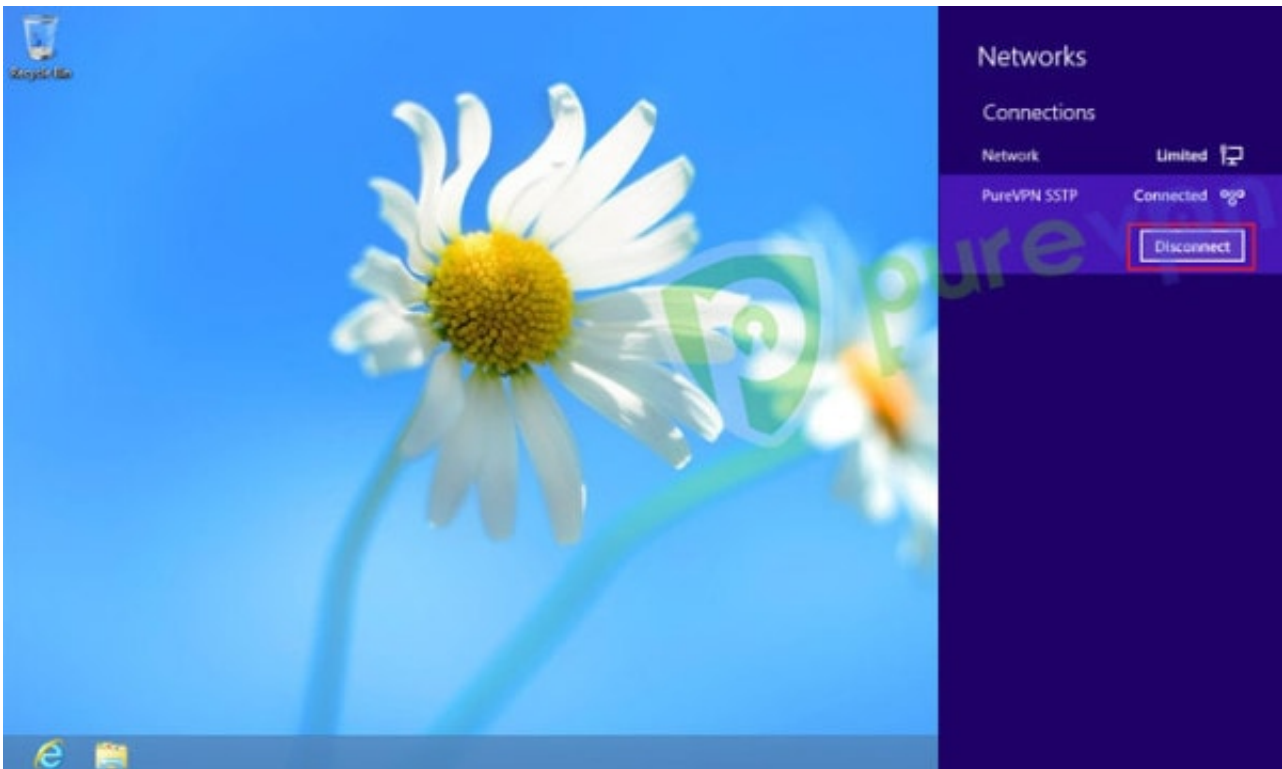
14 You are connected now.



15 To disconnect VPN, click on **Lan / Wifi icon** from System tray



16 Click on VPN connection and click “**Disconnect**”



Having Trouble Connecting?

If you're still unable to connect, then please check the most common errors and their solutions

Error 868

[Solution](#)

Error 800, 806, 807, 809

[Solution](#)

Error 720

[Solution](#)

Error 691

[Solution](#)

Error 647

[Solution](#)

Please use the **comment box** for your suggestions & feedback. For additional help, please submit [support ticket](#) with errors and screen shots (if possible) or contact our 24/7 live chat.