

How to Setup PureVPN Manually on Windows 8 (SSTP)?

NOTE

Starting June 15th, 2021, PureVPN will discontinue offering support for PPTP, L2TP, and SSTP protocols on the majority of VPN locations.

However, at the popular request of our users, we will continue to support the following locations for users to connect using PPTP, L2TP, and SSTP protocols:

Germany: de1.pointtoserver.com
Netherlands: nl1.pointtoserver.com
United Kingdom: uk11.pointtoserver.com
United States: usil1.pointtoserver.com
United States: ustx1.pointtoserver.com
United States: usca1.pointtoserver.com
United States: usfl1.pointtoserver.com
United States: usny1.pointtoserver.com
United States: uswdc1.pointtoserver.com
Australia: au-sd1.pointtoserver.com

Things to Consider:

Before you begin, please make sure that:

- You have a working internet connection
- Windows Supported Device.
- A Premium PureVPN account (If you haven't bought yet click [here](#) to buy)

Find your VPN credentials for manual configuration.

- Login to the PureVPN [member area](#)

PureVPN Support

Solution of Your Problems

• Once logged in go to Account & Billing section.
<https://support.purevpn.com>

- On Account and Billing section click on drop-down icon

- Click on Show/Update VPN password

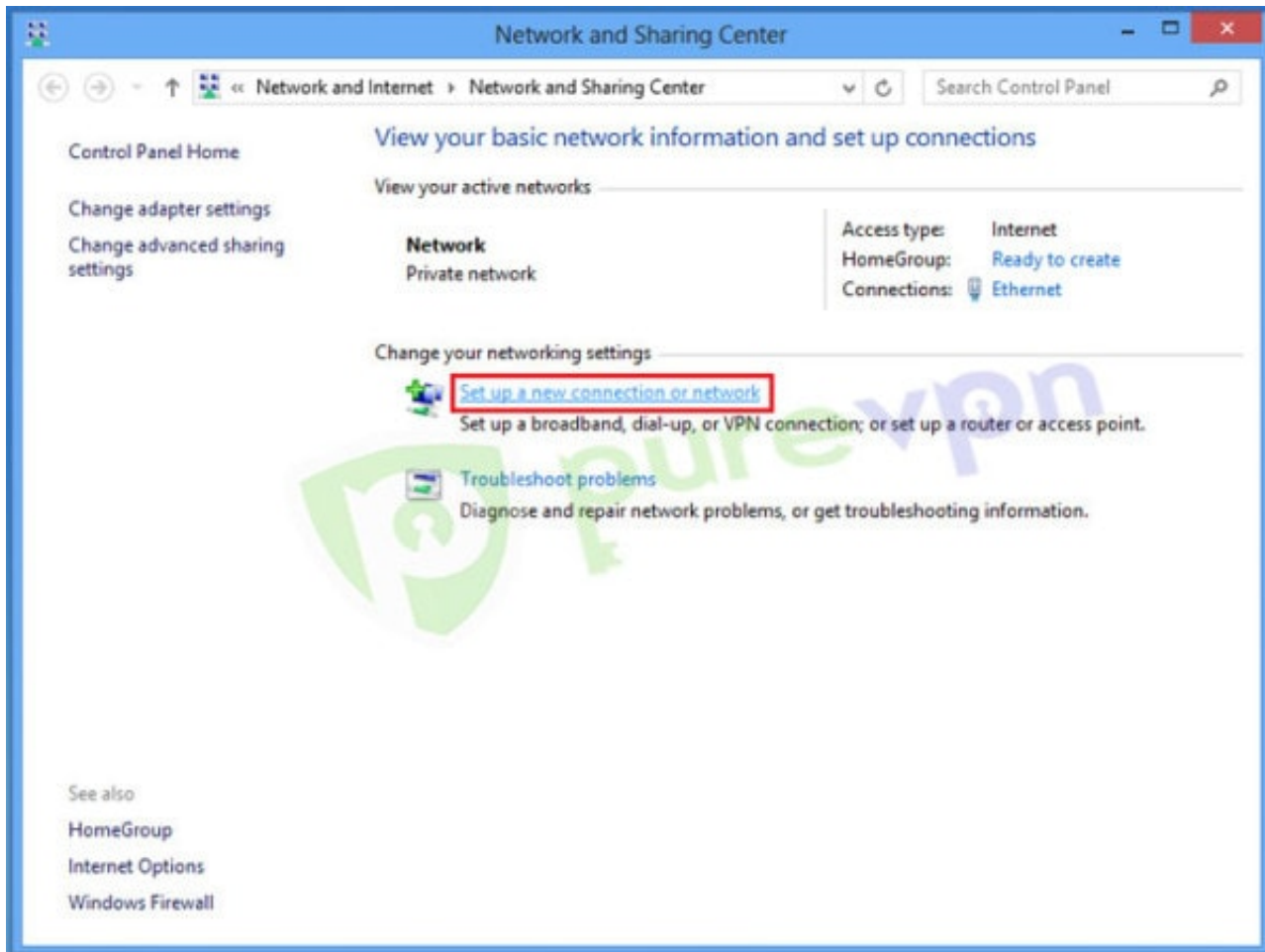
- Note down your PureVPN username and click on Eye icon to make your password visible and use it in the manual configuration.

How to connect PureVPN manually on Windows 8.

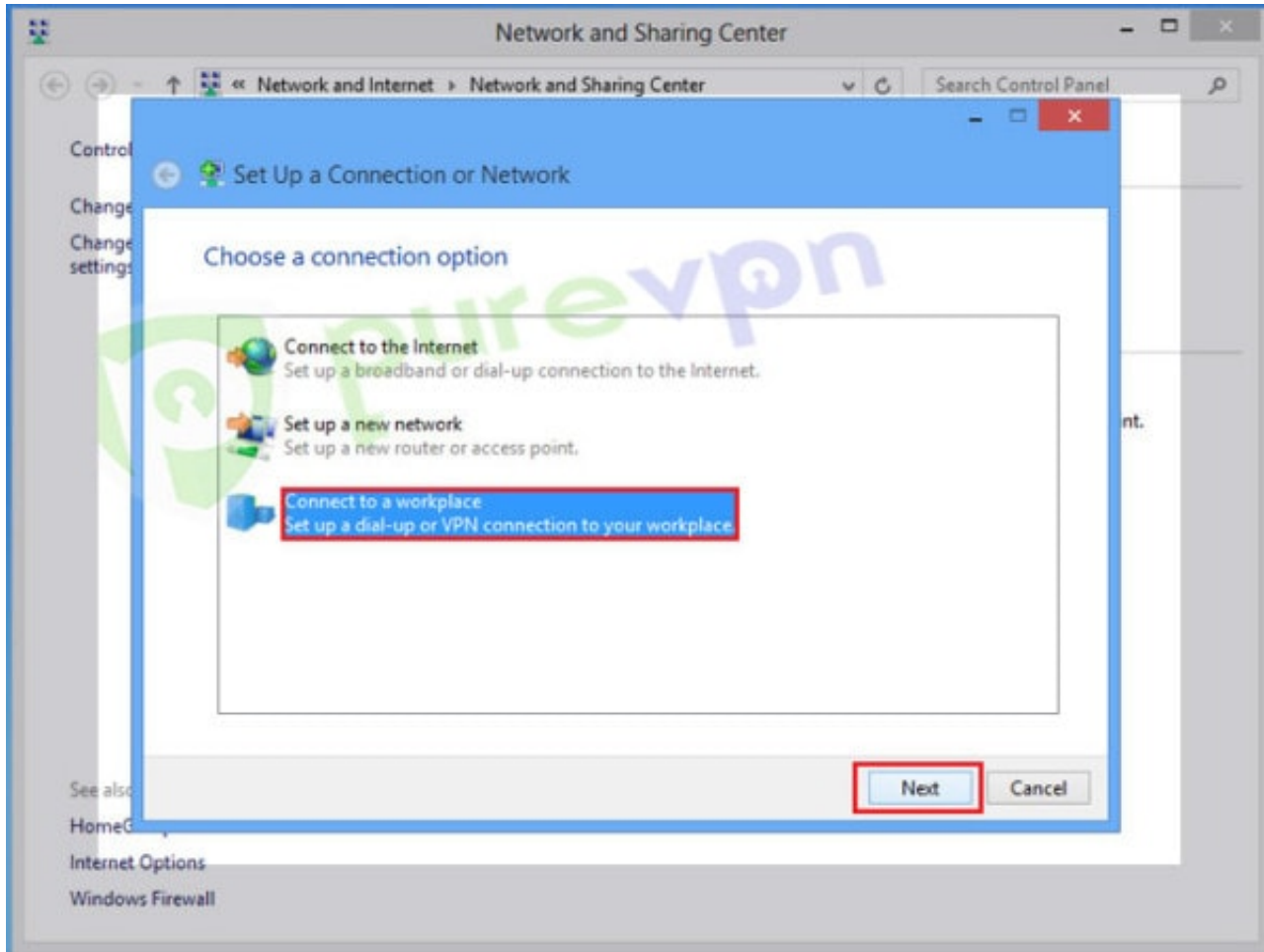
- Right click Lan/ Wifi icon from System tray and select Open Network and Sharing center



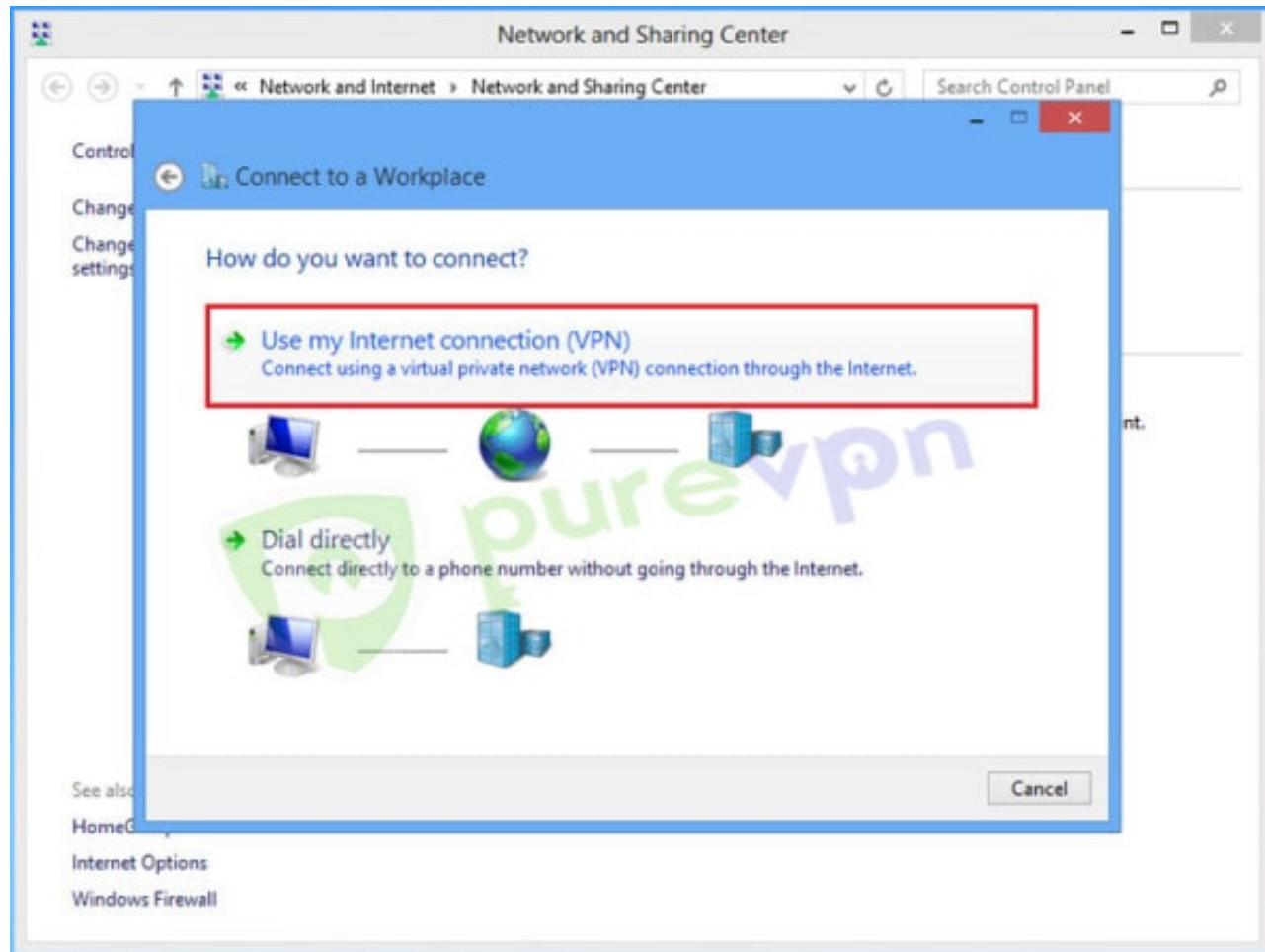
- Click Set up a new connection or network



- Select Connect to workplace and click Next



- Select Use my Internet connection (VPN)



- Insert the following info:

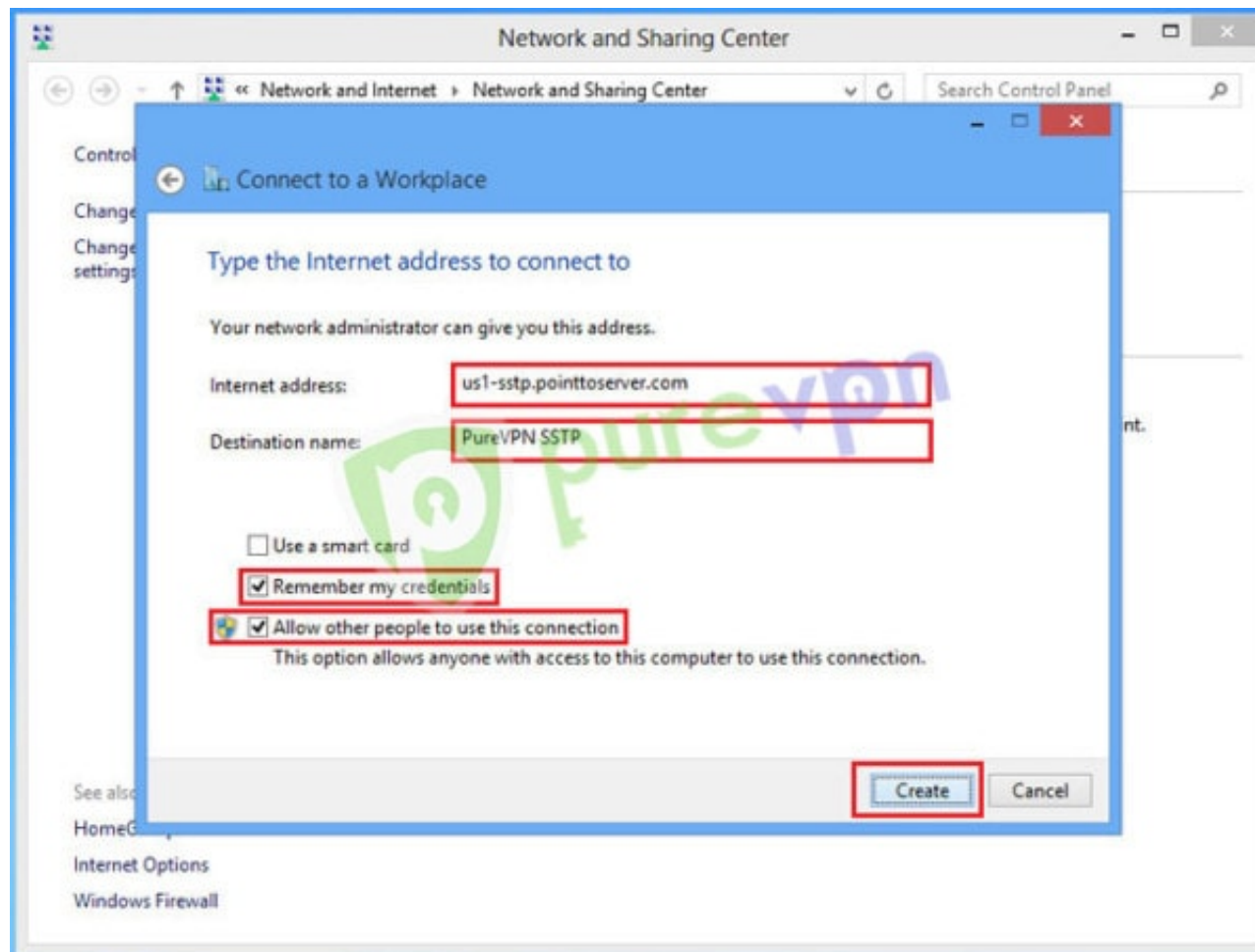
Insert the desired server: Please refer to the server address shared in the above note.

Insert destination name as PureVPN SSTP or PureVPN US etc

Select Remember my credentials

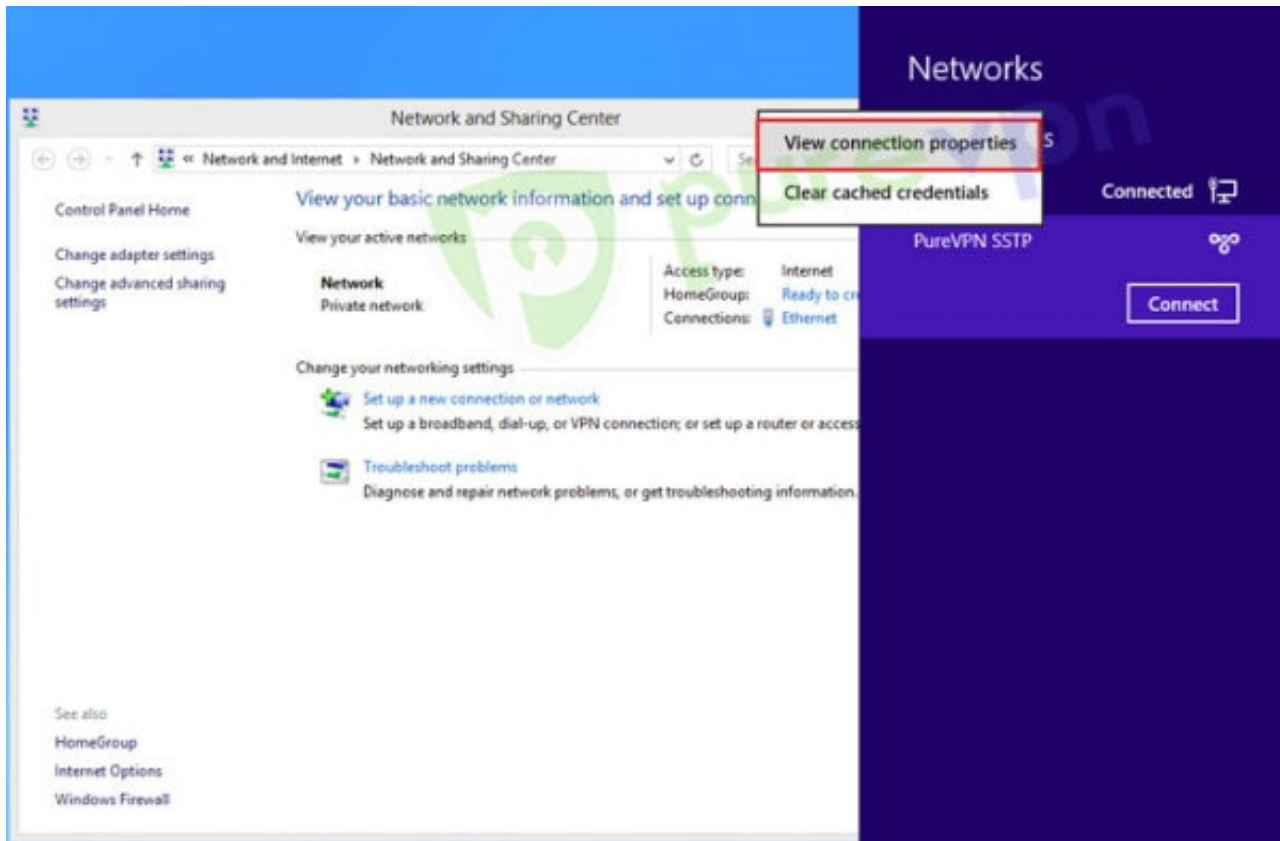
Select Allow other people to use this connection

Click Create

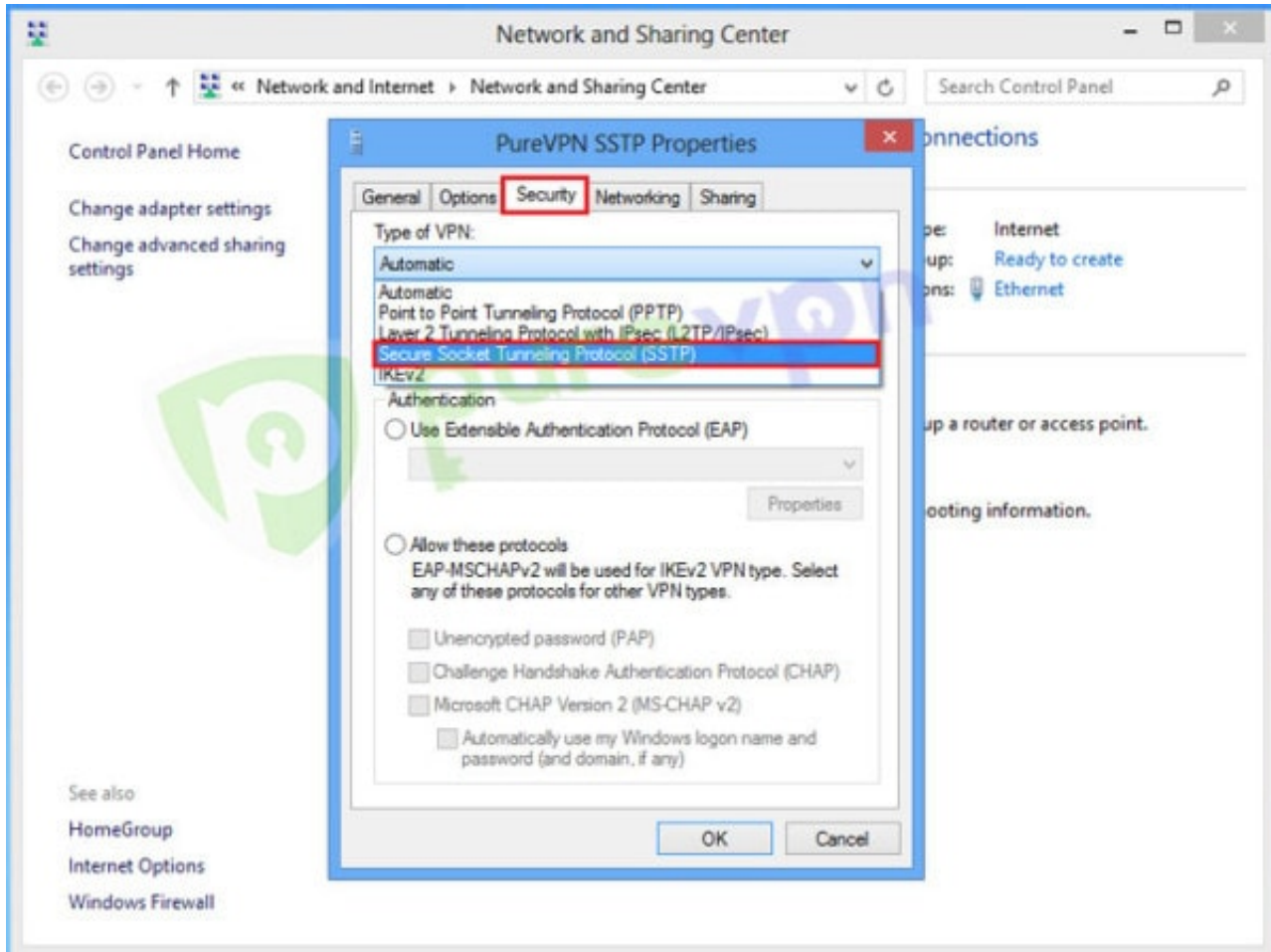


- Right click PureVPN SSTP connection and select View connection properties

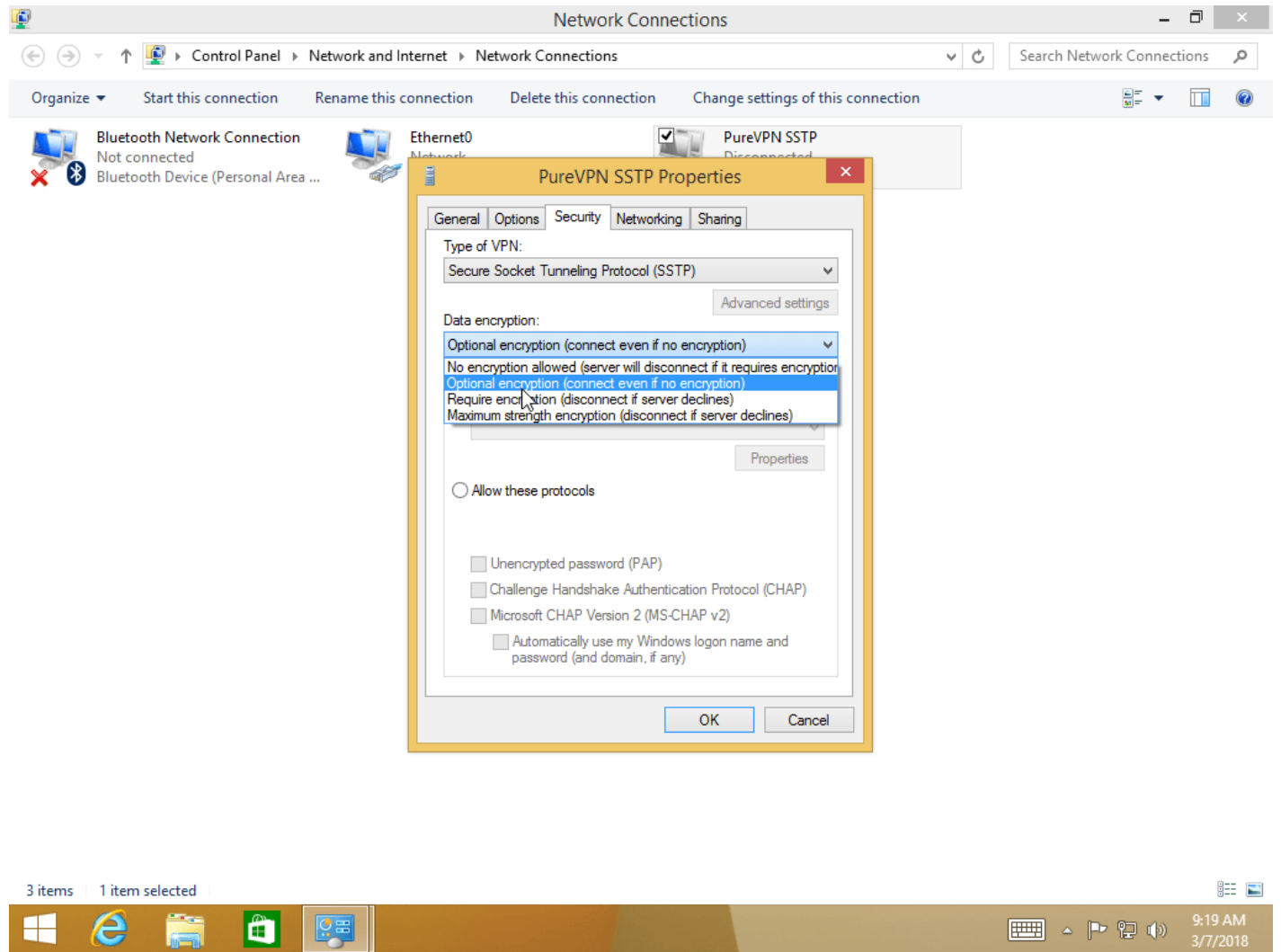
Note: If you are on Windows 8.1, then click on Change Adapter Settings from the Network and Sharing center, right-click on PureVPN SSTP connection, select Properties



- Click Security tab and select Secure Socket Tunneling protocol (SSTP)



- Select desired encryption from "Data encryption" drop down menu

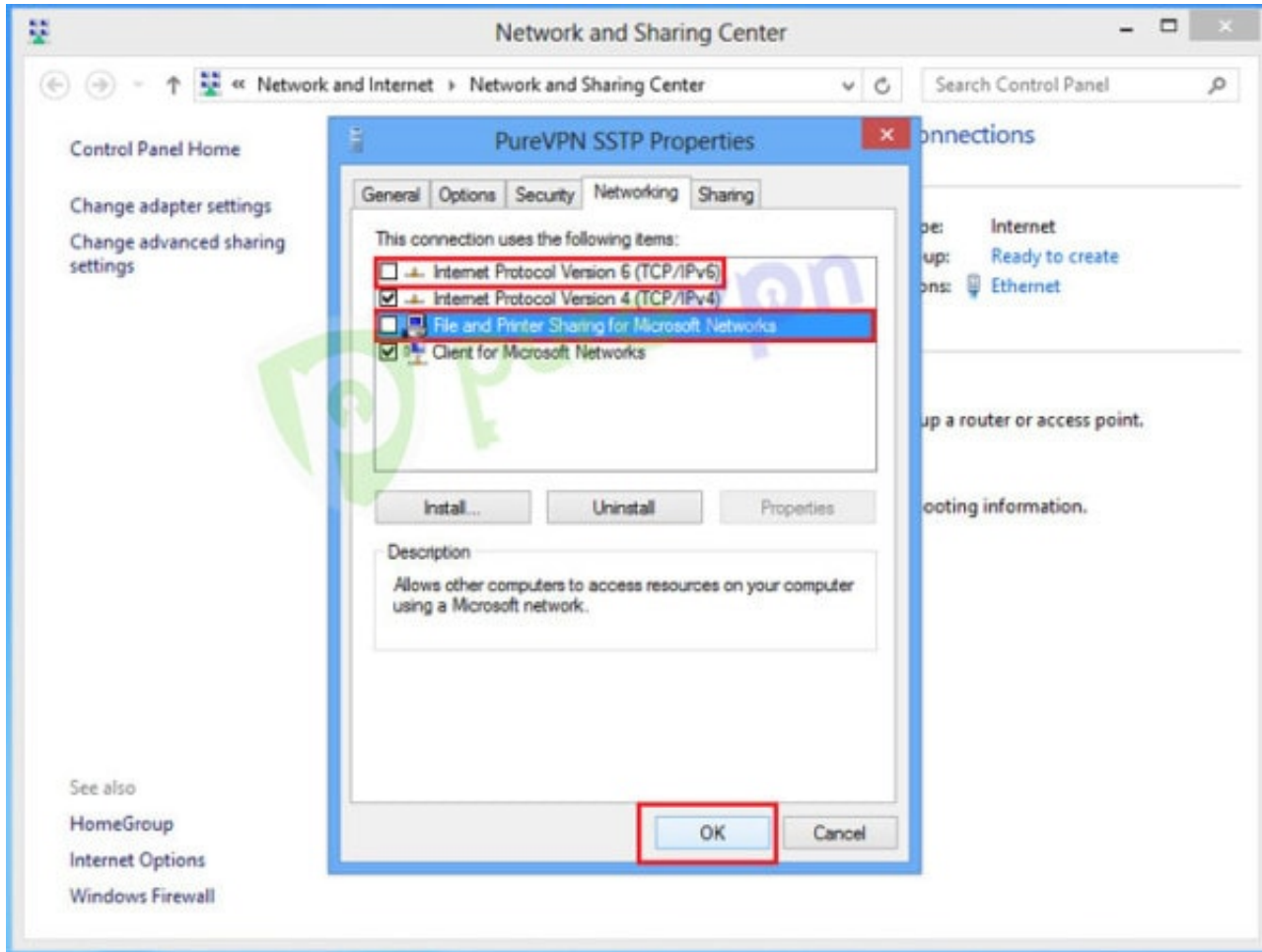


- Insert the following info:

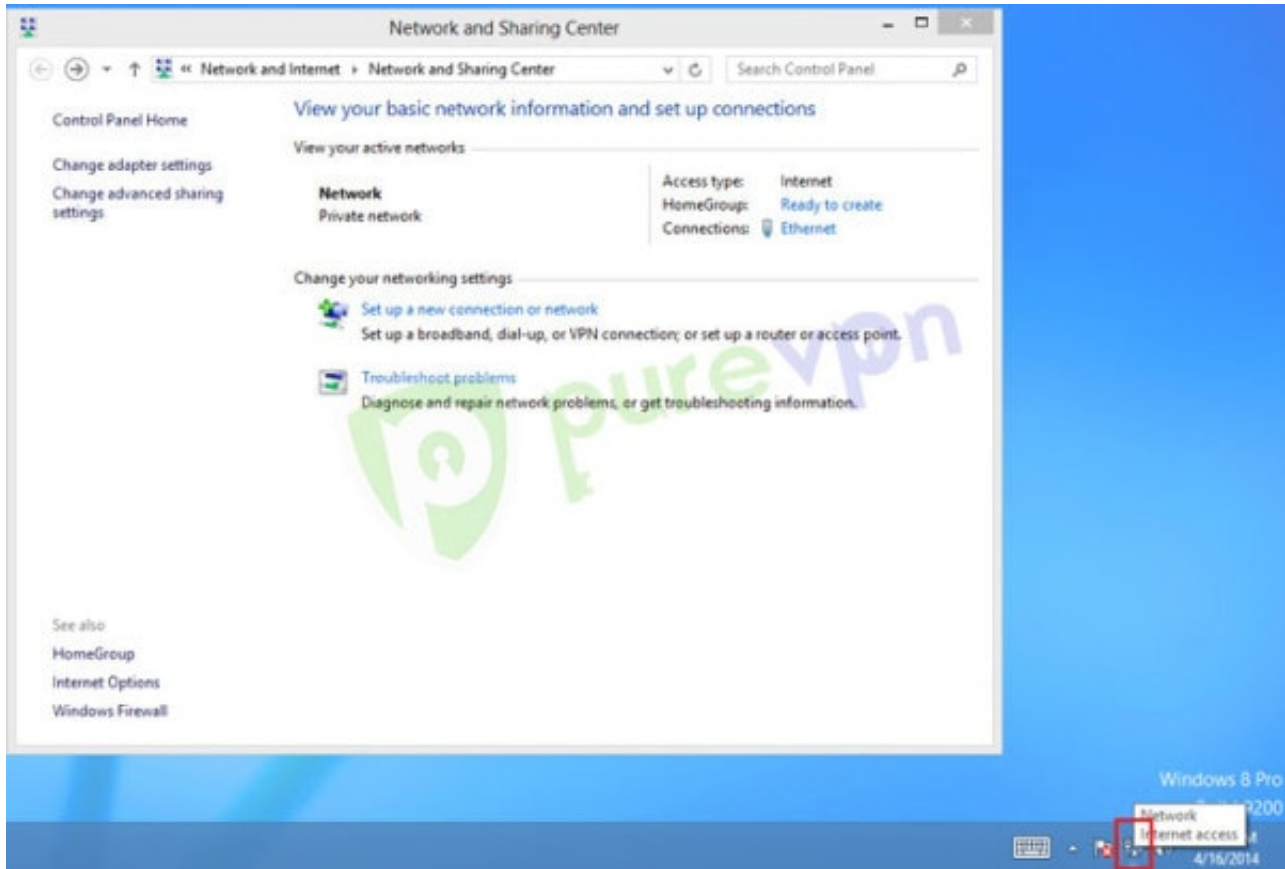
Click on Networking tab

Uncheck Internet Protocol Version 6 (TCP/IPv6) and File and Printer Sharing for Microsoft Networks” then

Click OK



- Click Wifi/ Lan icon from System tray.

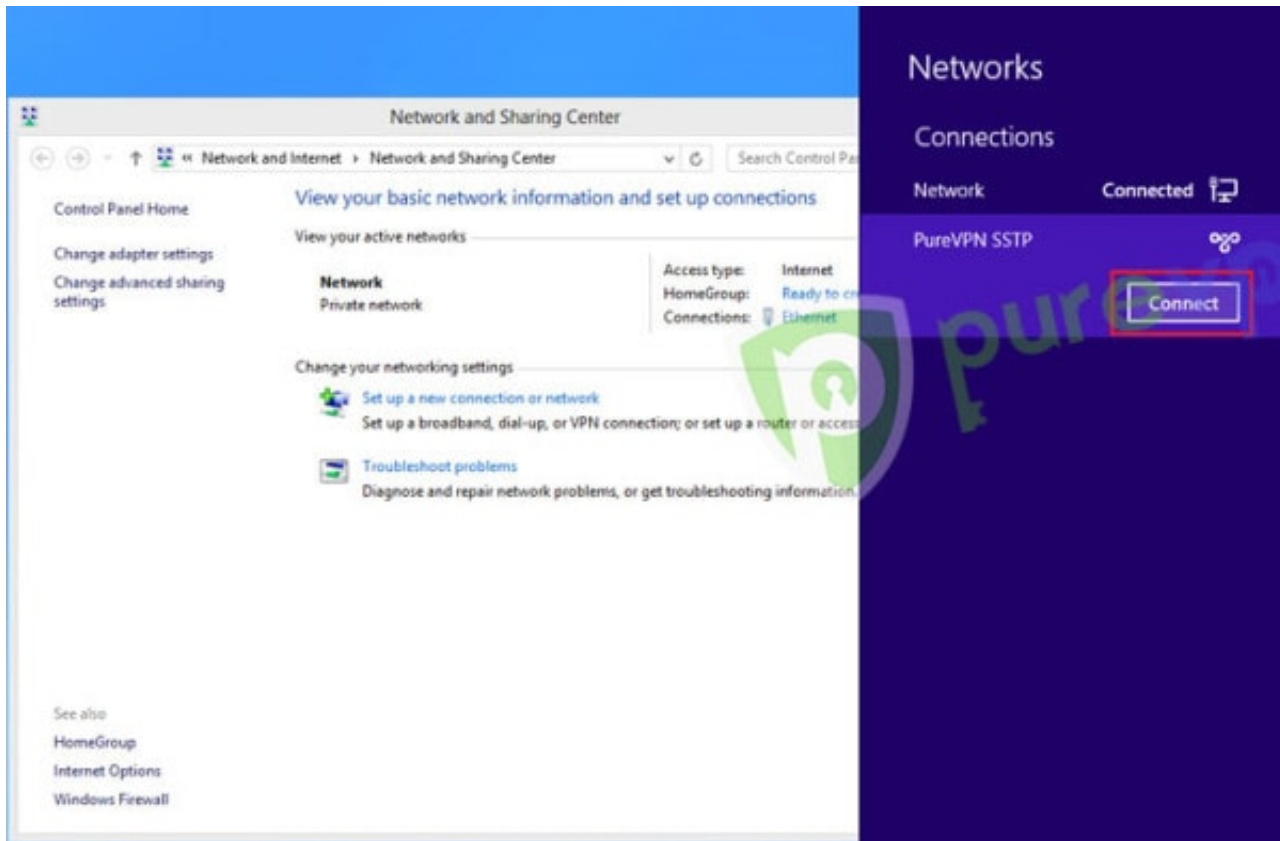


- Click PureVPN SSTP connection and click Connect

PureVPN Support

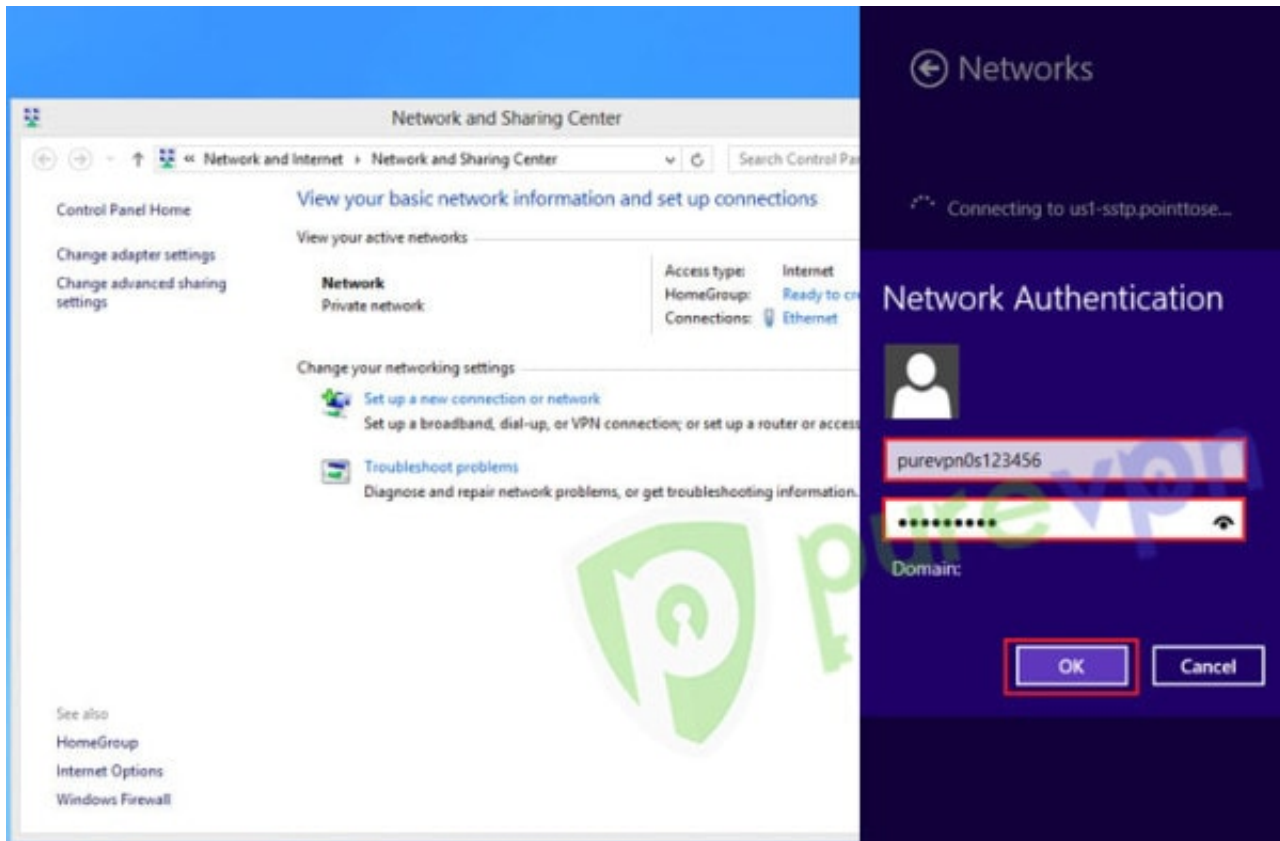
Solution of Your Problems

<https://support.purevpn.com>

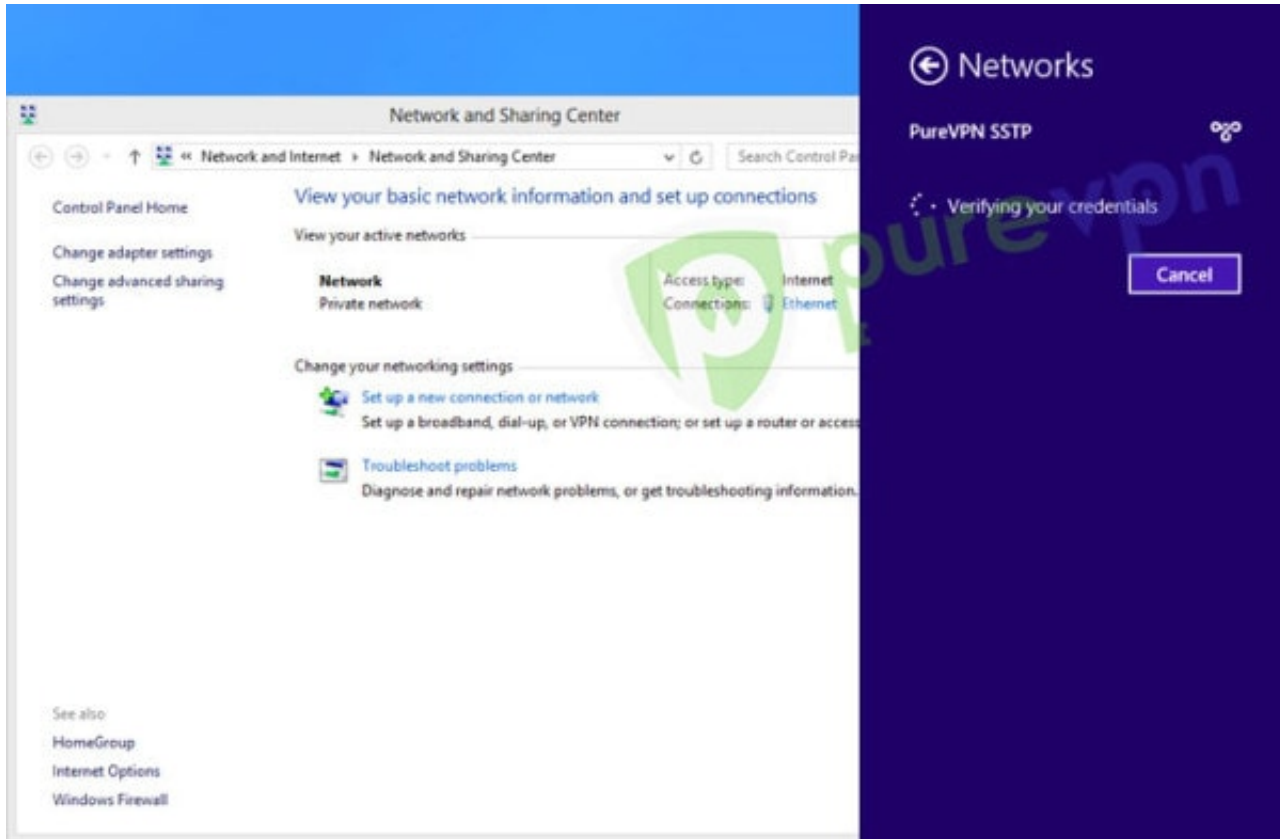


- Insert your Username and Password provided by PureVPN then Click OK

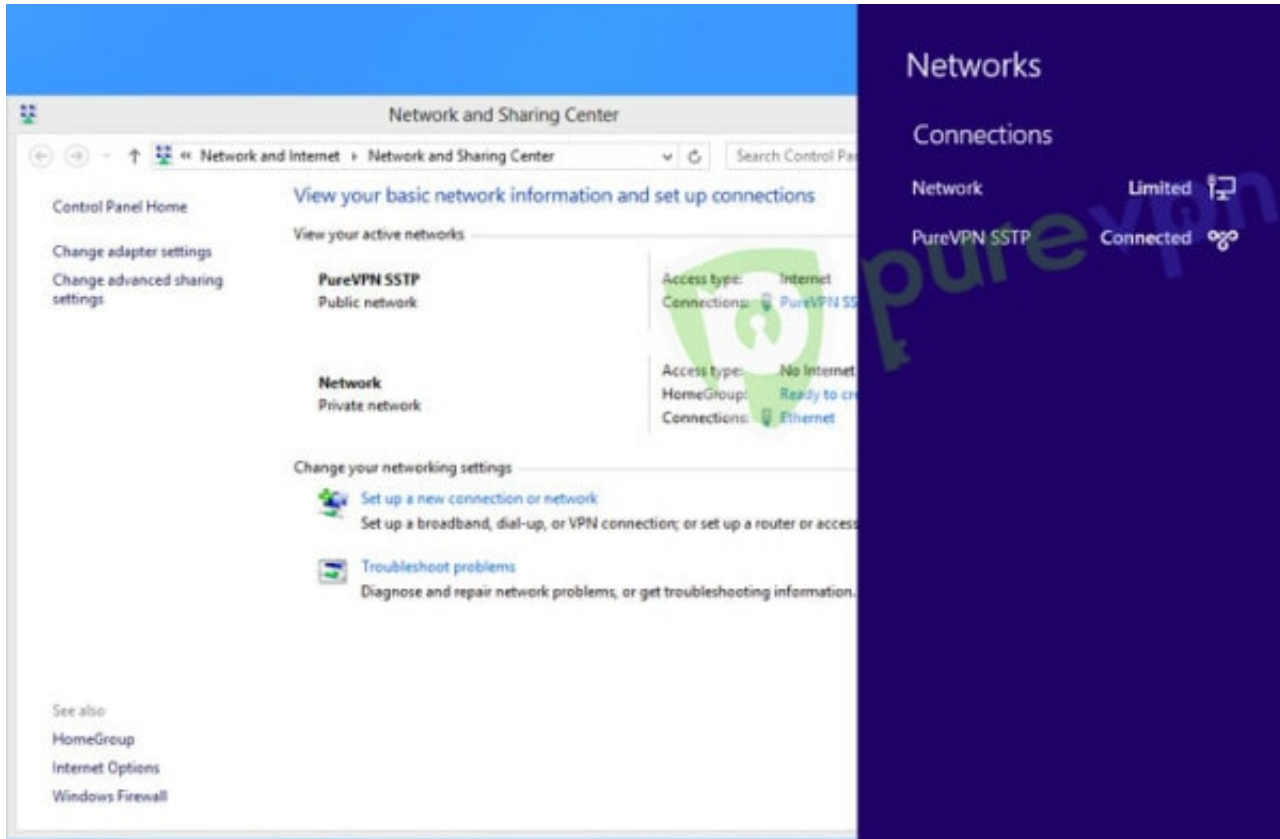
Important Note: Please always remember your PureVPN username & password is different from your Website Member Area email address & Password.



- VPN connection will establish after verifying account details.



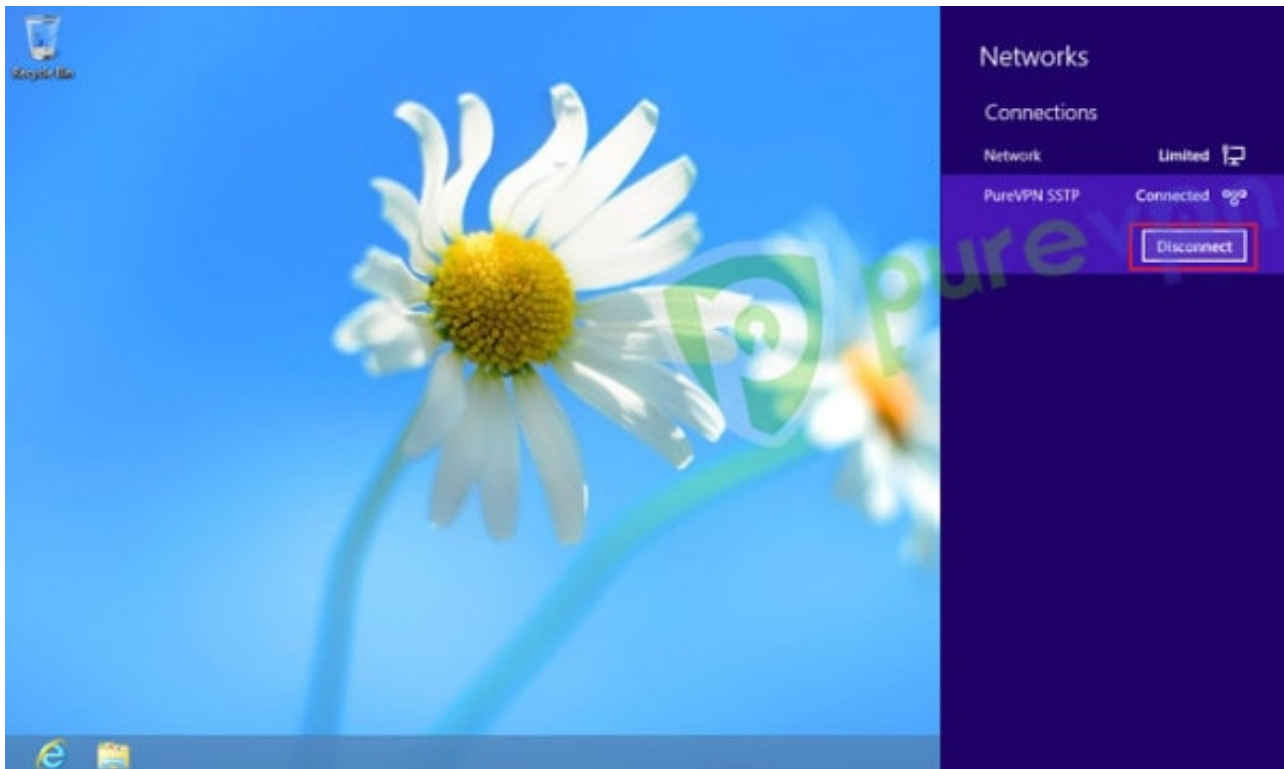
- You are connected now.



- To disconnect VPN, click on Lan/ Wifi icon from System tray



- Click VPN connection and click Disconnect



Having Trouble Connecting?

If you're still unable to connect, then please check the most common errors and their solutions

Error 868

[Solution](#)

Error 800, 806, 807, 809

[Solution](#)

Error 720

[Solution](#)

Error 691

[Solution](#)

Error 647

[Solution](#)