

How to Setup PPTP on Kali Linux

Are you having a hard time configuring PureVPN PPTP set up on Kali Linux? Let us simplify the process for you. Just follow this guide and set up PureVPN on your Linux with a few clicks.

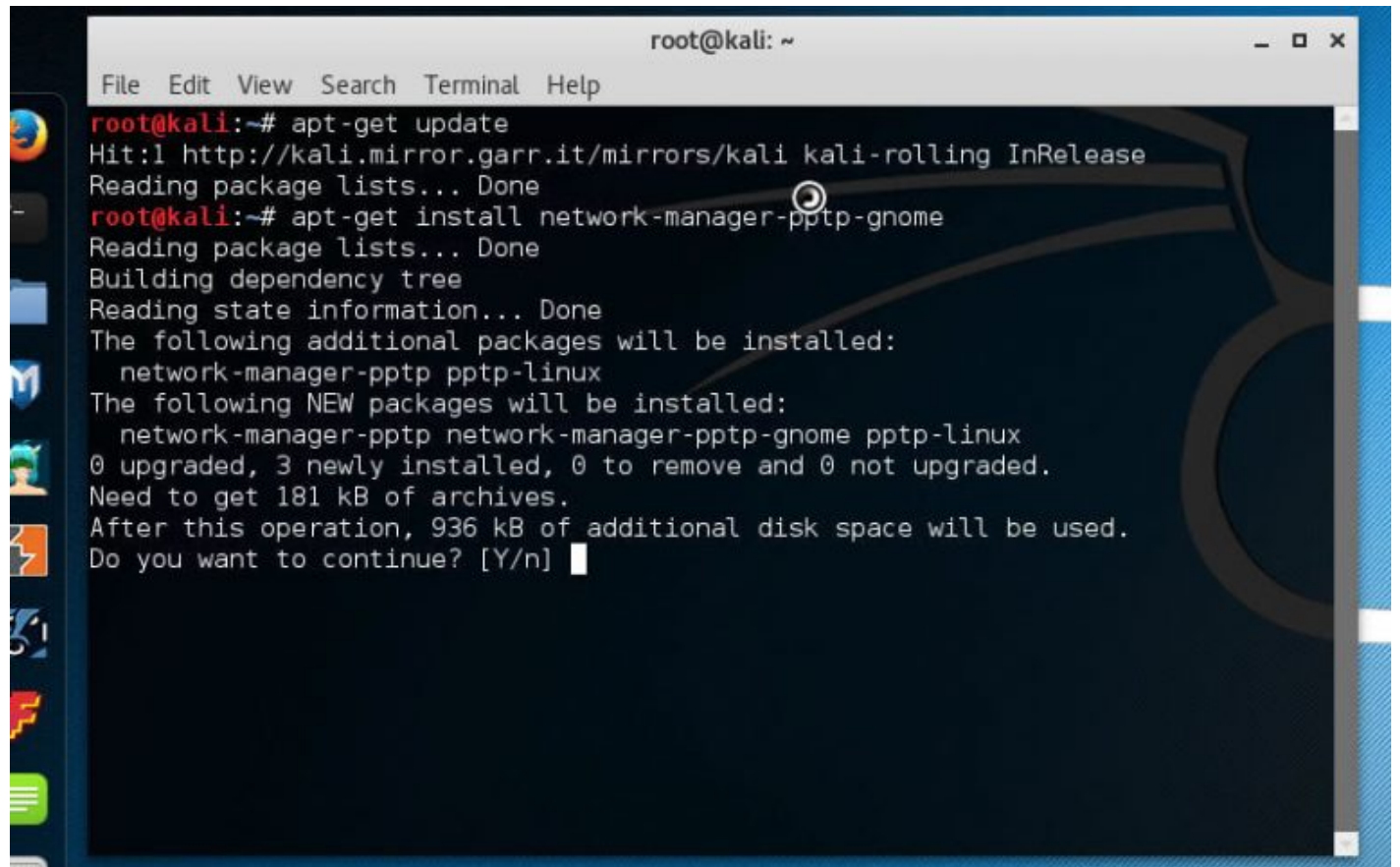
1 Open Terminal



2 Install required package by entering the commands mentioned below

```
apt-get update
```

```
apt-get install network-manager-pptp-gnome
```

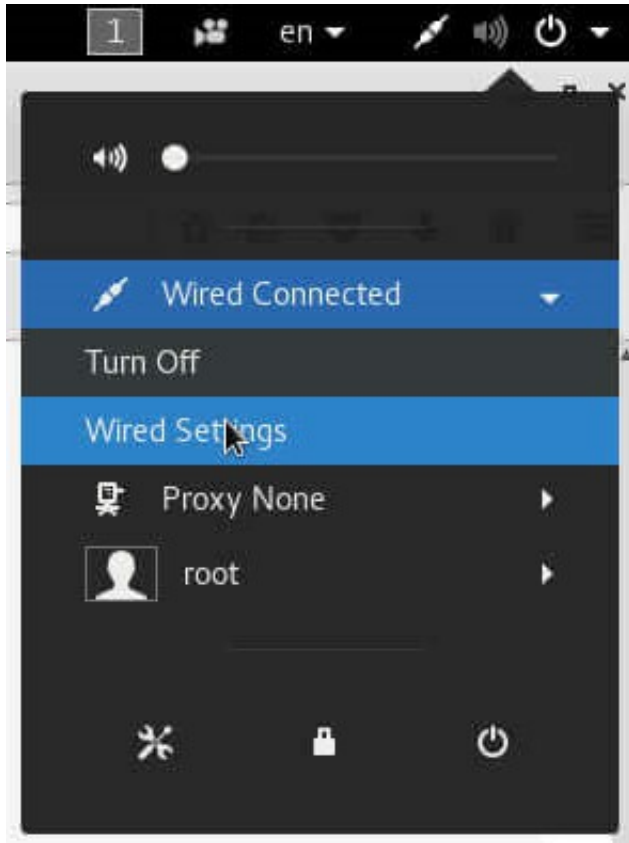
A terminal window titled 'root@kali: ~' with a menu bar containing 'File Edit View Search Terminal Help'. The terminal output shows the execution of 'apt-get update' and 'apt-get install network-manager-pptp-gnome'. The update command shows a hit for 'kali-rolling InRelease'. The install command shows the following additional packages will be installed: 'network-manager-pptp ptp-linux'. The following NEW packages will be installed: 'network-manager-pptp network-manager-pptp-gnome ptp-linux'. The summary indicates 0 upgraded, 3 newly installed, 0 to remove, and 0 not upgraded. The disk space requirements are 181 kB of archives and 936 kB of additional disk space. The prompt asks 'Do you want to continue? [Y/n]' with a cursor on the 'n'.

3 Open “Wired Settings” (Network settings)

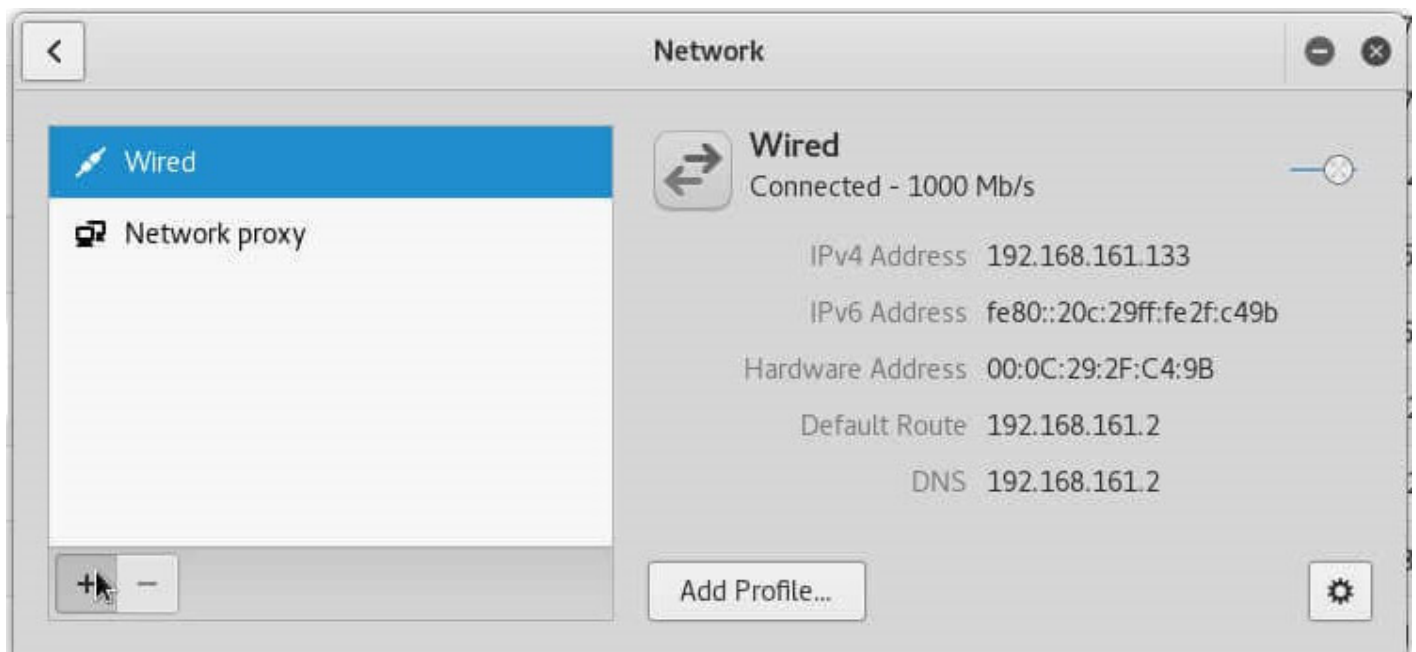
PureVPN Support

Solution of Your Problems

<https://support.purevpn.com>



4 Click “+” icon to create a new connection

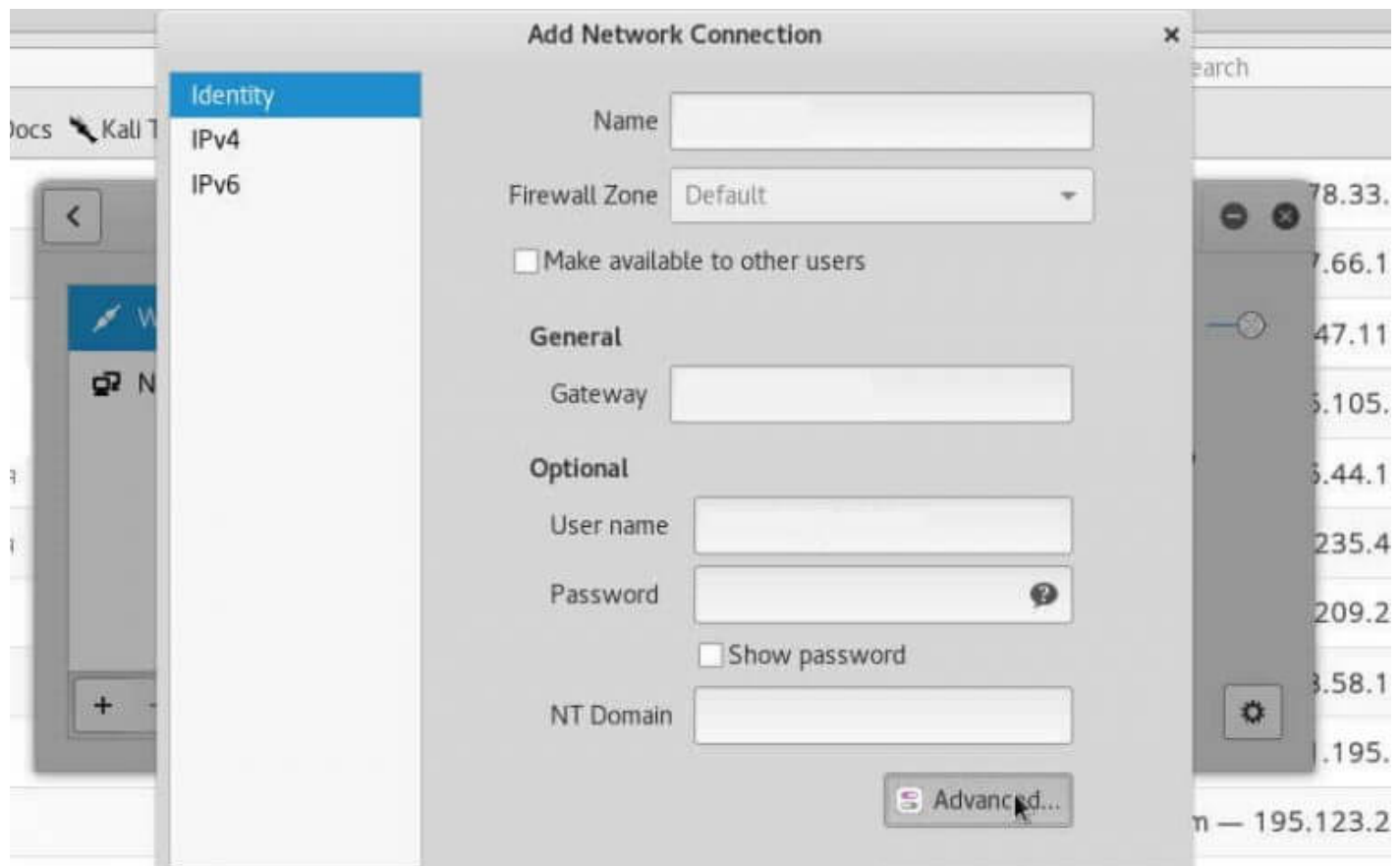


5 Select “Point-to-point Tunneling protocol (PPTP)”

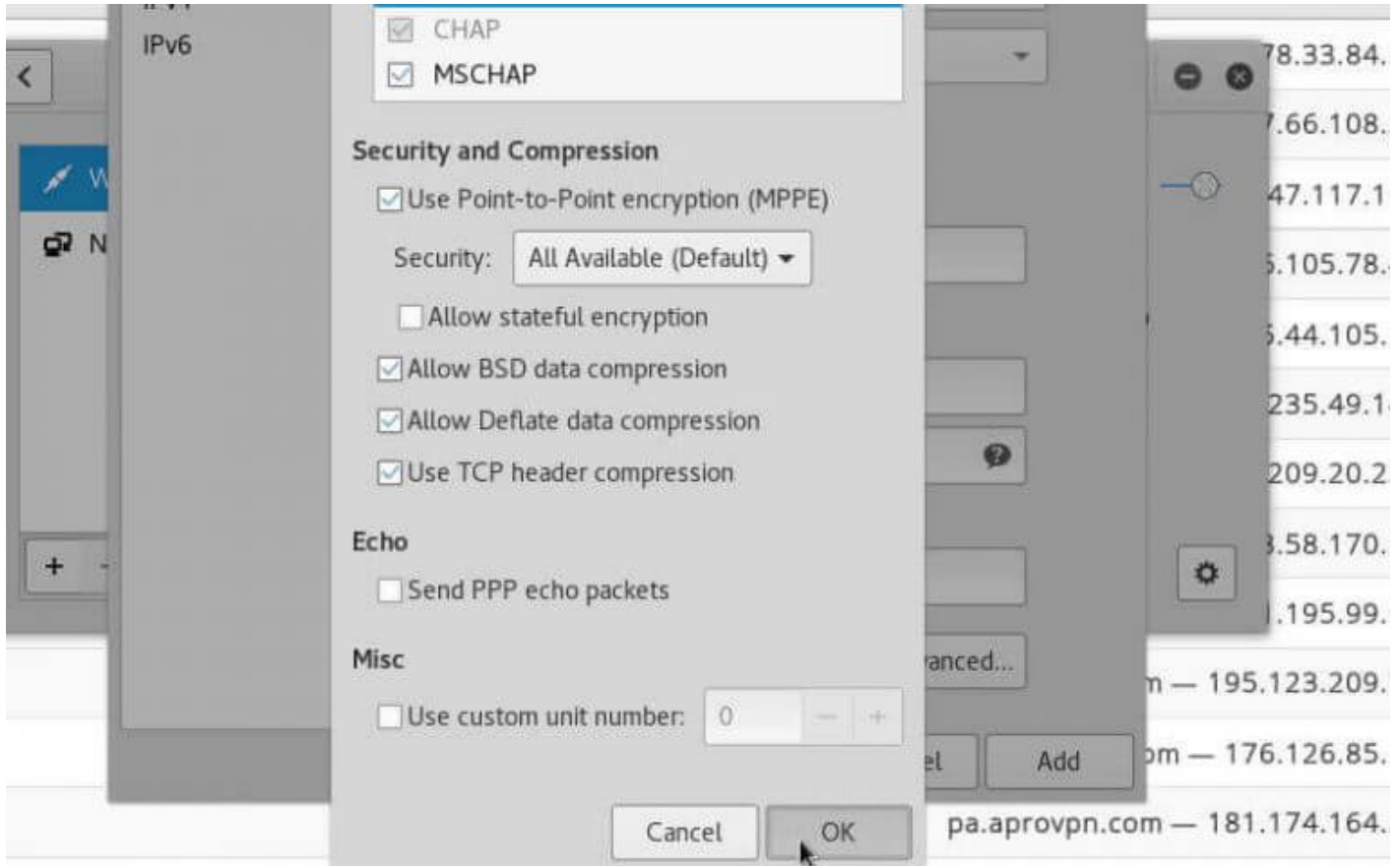
6 Insert the following details:

- Enter PureVPN PPTP in “Name” field,
- Gateway field : Server address which can be checked from [here](#)
- Username: Your PureVPN username shared via email
- Password: Your PureVPN password shared via email

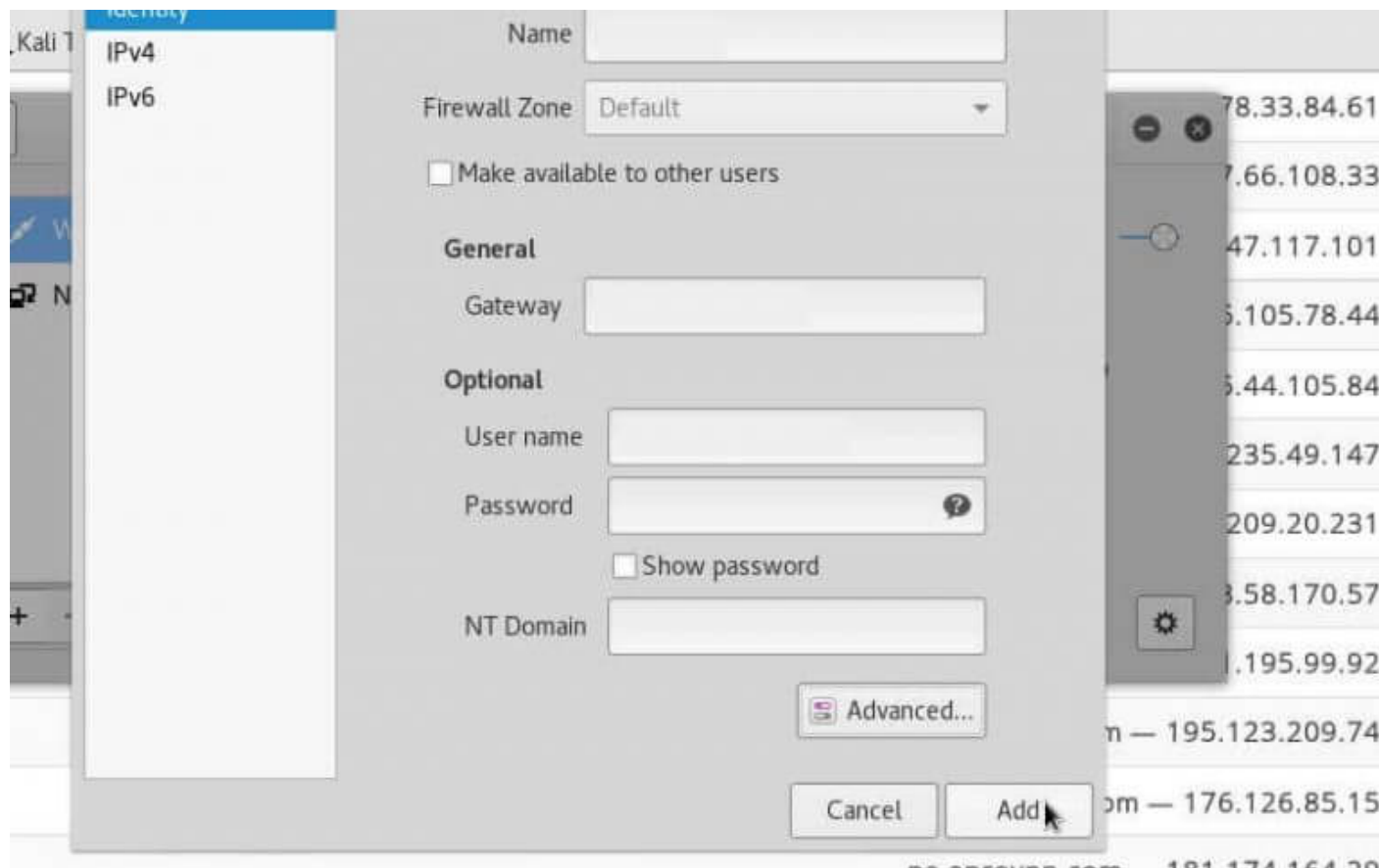
7 Click “Advanced”



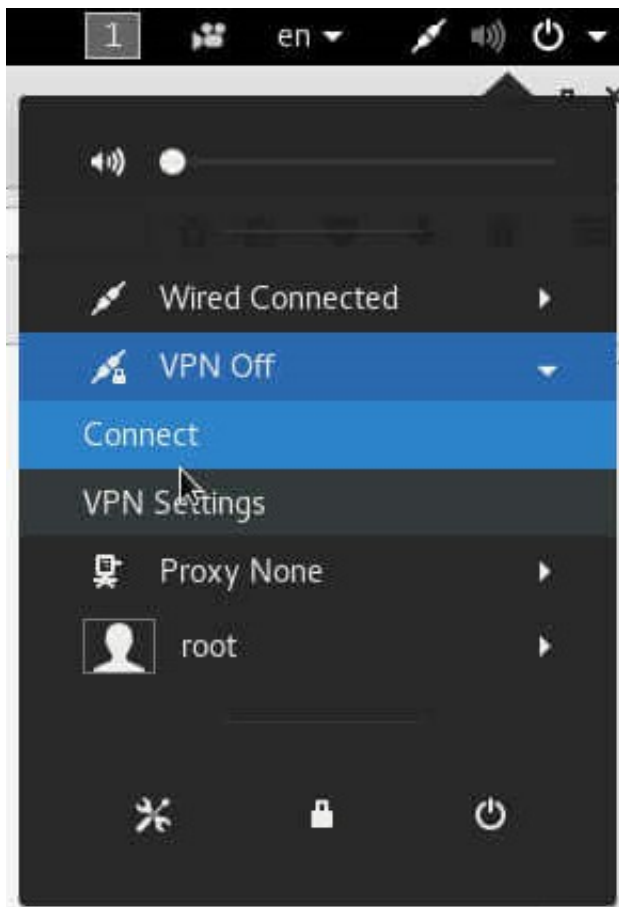
8 Check “Use Point-to-Point encryption (MPPE)” and click “Ok”



9 Click "Add"



10 Open "Network Connections" then "VPN Off", click "connect"



11 If you're asked for authentication again, enter your PureVPN Password.



12

Wait for PureVPN to establish your connection.

13 You are now connected!



14 If you wish to change the server address, do the following.

- Go to “Network Connections”
- Edit “PureVPN PPTP”
- Change “Gateway” field with a new server address
- Click “Apply”