

## How to Setup L2TP on Kali Linux

### NOTE

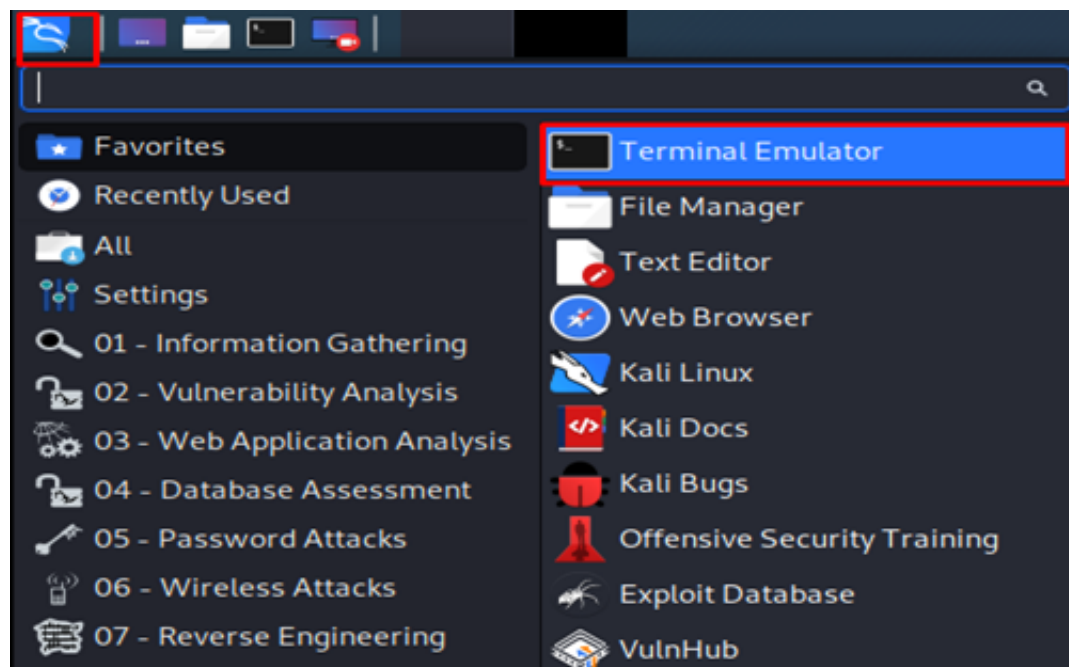
Starting June 15th, 2021, PureVPN will discontinue offering support for PPTP, L2TP, and SSTP protocols on the majority of VPN locations.

However, at the popular request of our users, we will continue to support the following locations for users to connect using PPTP, L2TP, and SSTP protocols:

Germany: de1.pointtoserver.com  
Netherlands: nl1.pointtoserver.com  
United Kingdom: uk11.pointtoserver.com  
United States: usil1.pointtoserver.com  
United States: ustx1.pointtoserver.com  
United States: usca1.pointtoserver.com  
United States: usfl1.pointtoserver.com  
United States: usny1.pointtoserver.com  
United States: uswdc1.pointtoserver.com  
Australia: au-sd1.pointtoserver.com

**Follow the instructions to enable PureVPN on your Kali Linux with L2TP protocol. Here's how to proceed.**

1 Go to the '**Menu**' option and search and open the '**Terminal Emulator**'.

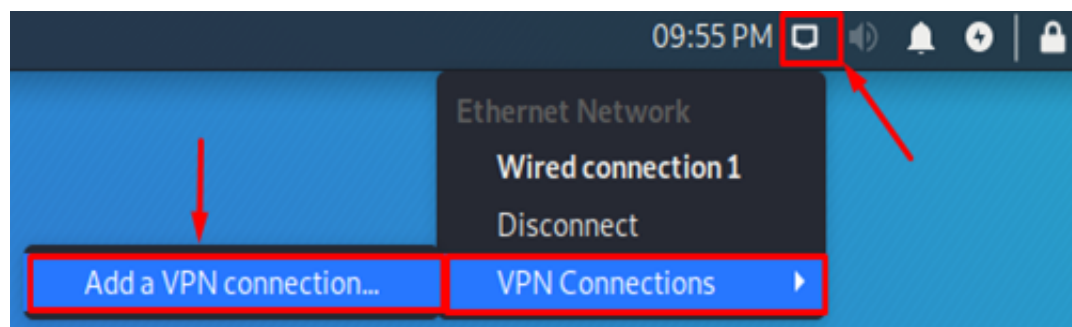


2 Now you need to install L2TP packages. Type the following commands one by one:

- **sudo apt-get update**
- **sudo apt-get install network-manager-l2tp-gnome**
- **sudo apt-get install xl2tpd**

3 Now Select the following options:

- Click on “**Ethernet Network Connection**”
- Go to “**VPN Connections**”
- Select “**Add a VPN Connection...**”

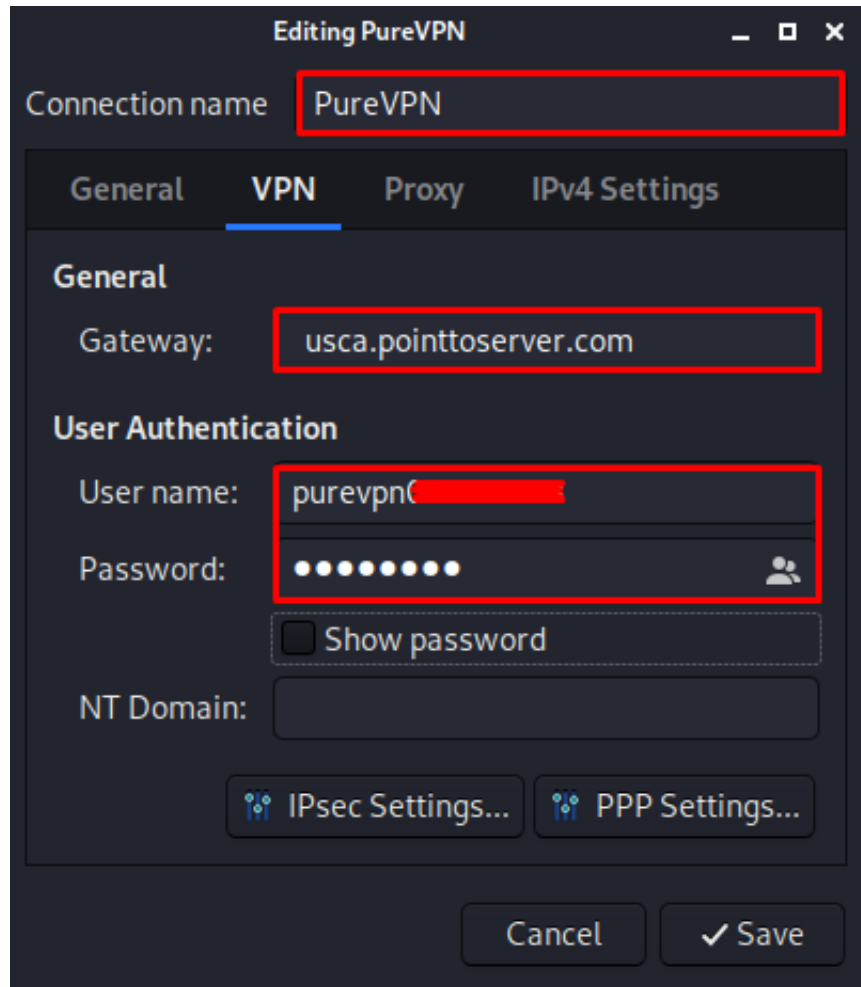


4 Select ‘**Layer 2 Tunneling Protocol (L2TP)**’ option. Click the “**Create**” button.



5 When a new window appear, complete the fields as below:

- Insert Connection name: **PureVPN**
- Insert the desired server: Please refer to the server address shared in the above note.
- Insert **Username** provided by **PureVPN**
- Insert **Password** provided by **PureVPN**



6 Click **IPsec Settings**

Check '**Enable Ipsec tunnel to IPsec host**'

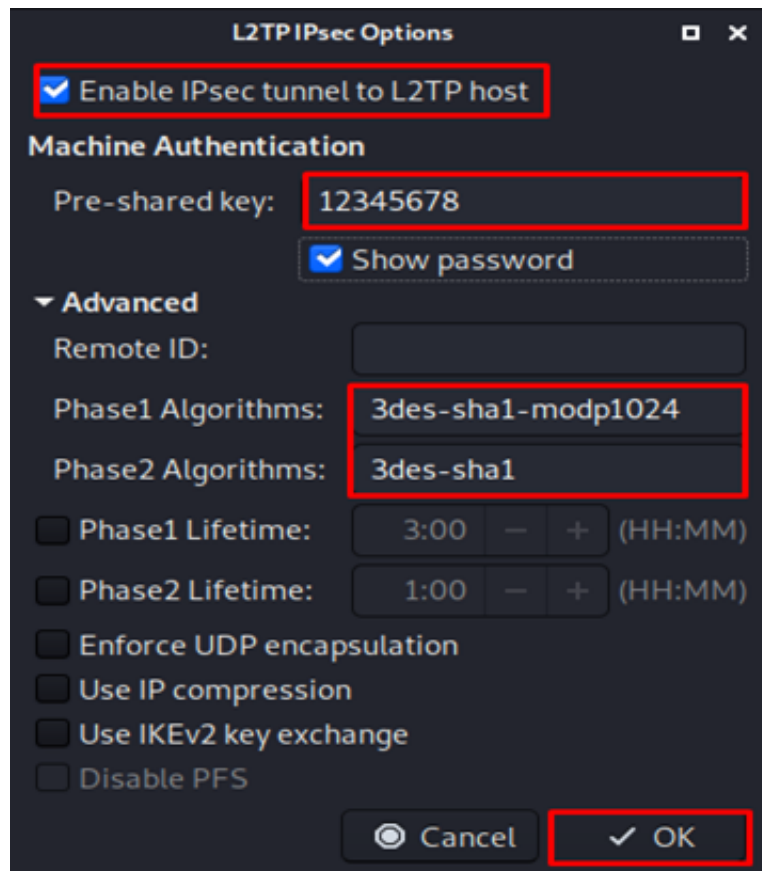
Pre-share key: **12345678**

Then specify connection algorithms in **Advanced** section:

For phase 1 = **3des-sha1-modp1024**

For phase 2 = **3des-sha1**

Click **OK**



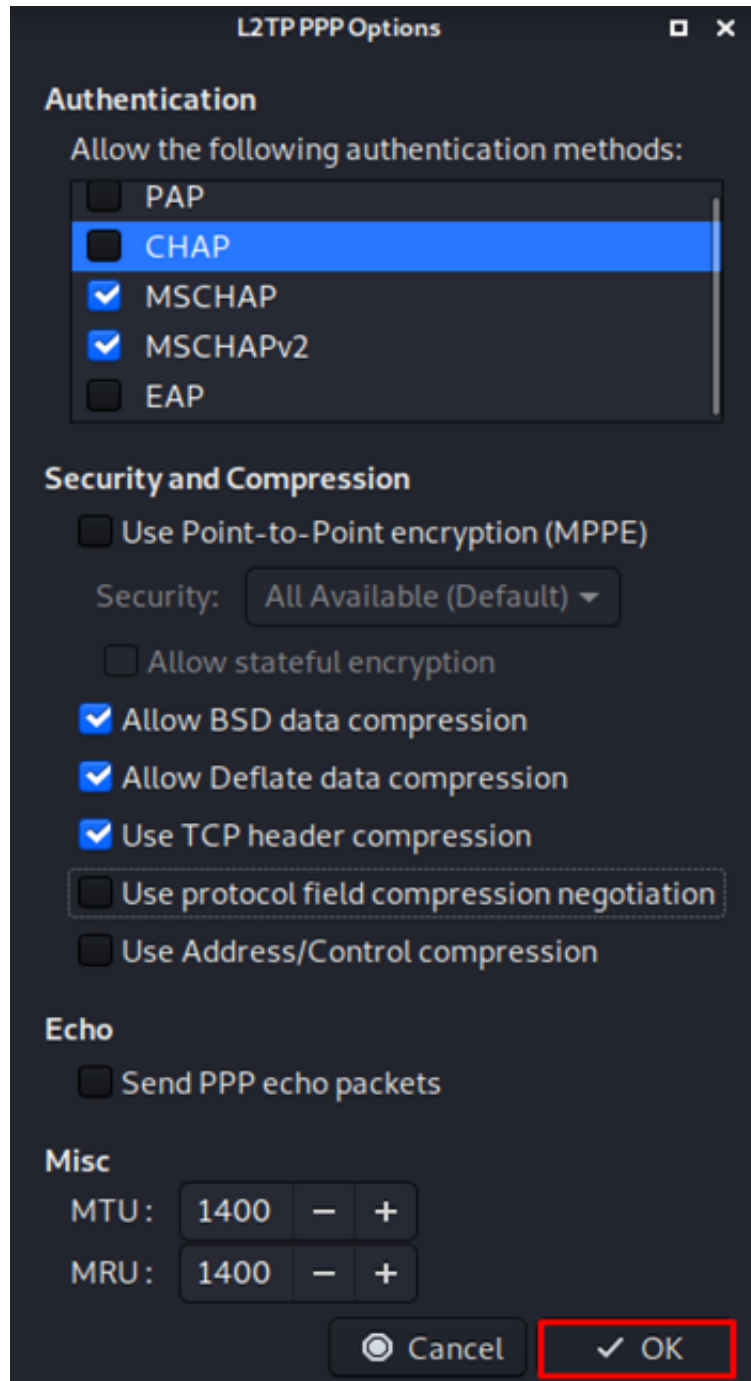
7 Go to the '**PPP Settings...**' button

Allow the following options:

- MSCHAP
- MSCHAP2

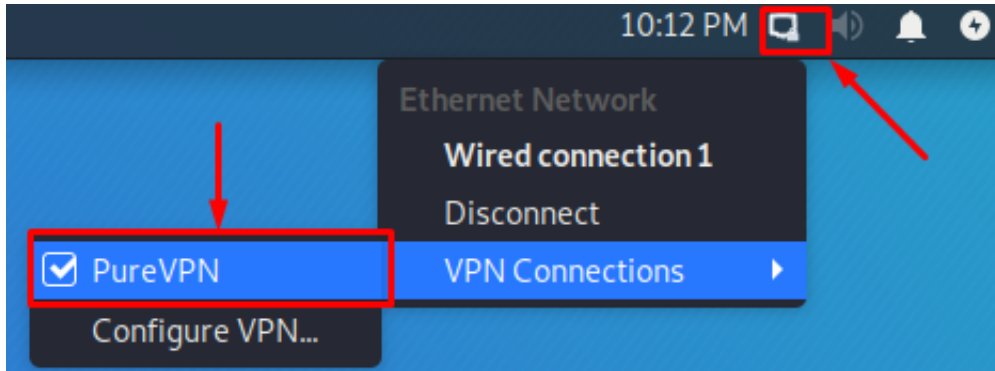
Also, select the following:

- Allow BSD data compression
- Allow Deflate data compression
- Use TCP header compression



?lick "OK" then "Save".

8 Now go to **Ethernet Network Connections** option and under **VPN Connections** click/check on the newly created **PureVPN** connection to activate VPN.



9 Viola! You are now connected to PureVPN.

