

## How to Set up Remote Desktop Connection

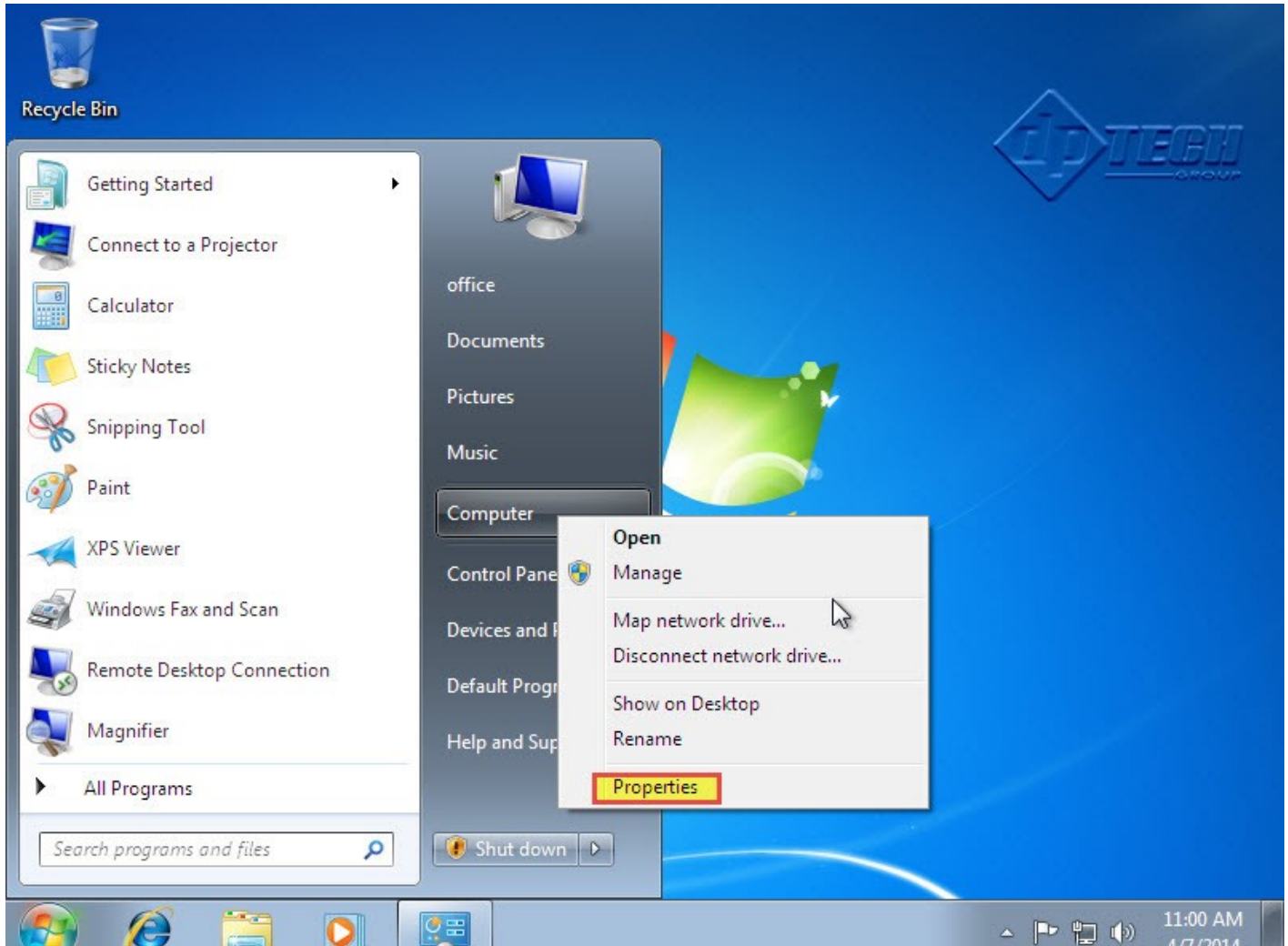
The Remote Access feature in Windows operating systems is designed to allow a PC's desktop, along with other files & folders, settings and programs to be accessible from a distant location.

For instance, you can access your office computer from your home computer through remote desktop connection in Windows. This way you can access all your apps, files and network resources, as if you were working on your office PC – all from the convenience of your home.

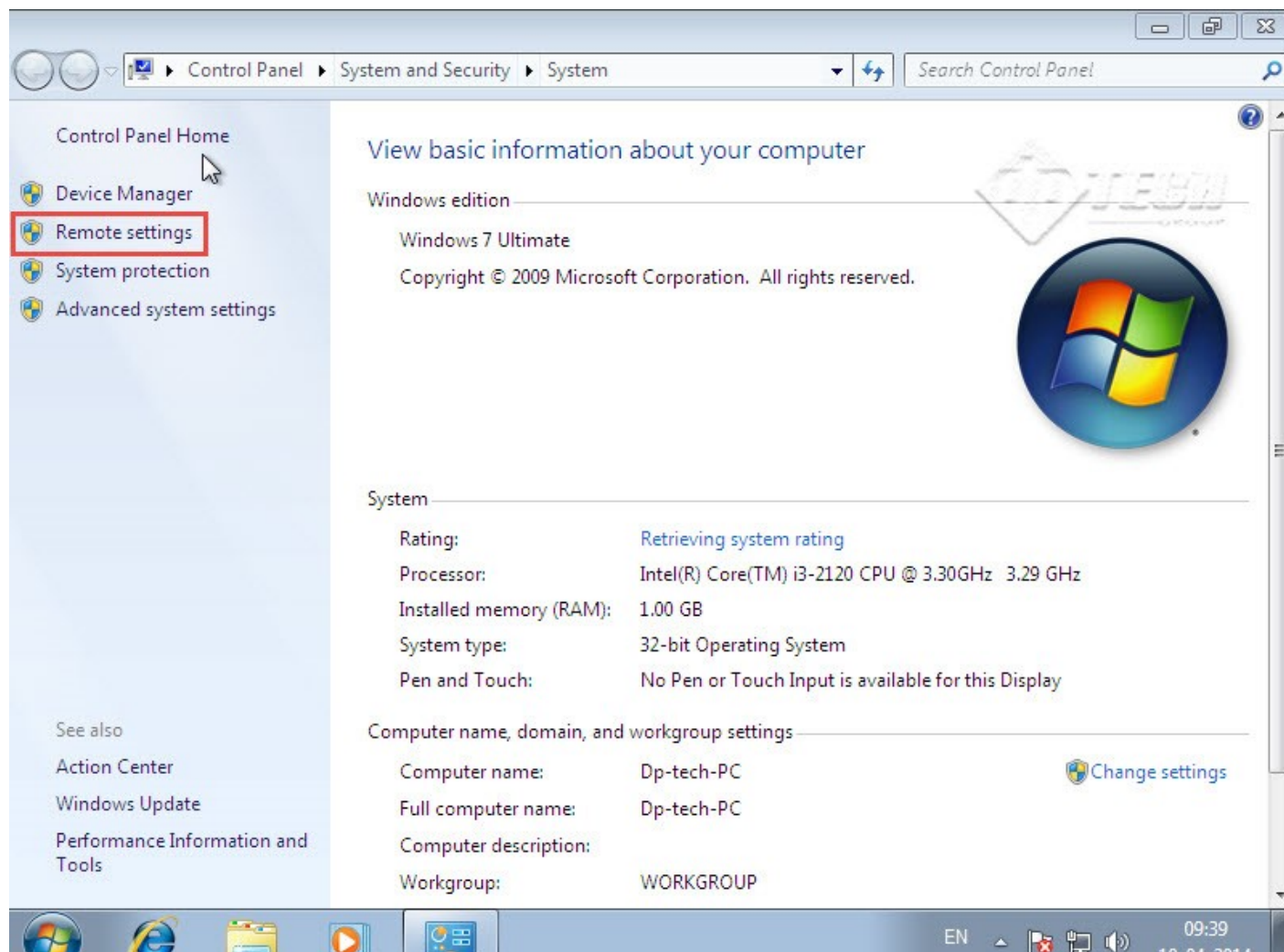
Remote desktop connections can also be used in case you want to carry out some changes remotely on the system of a client, friend or family member.

You can create a remote connection to access a computer in GUI (Graphical User Interface) mode. This will give you full control of the system.

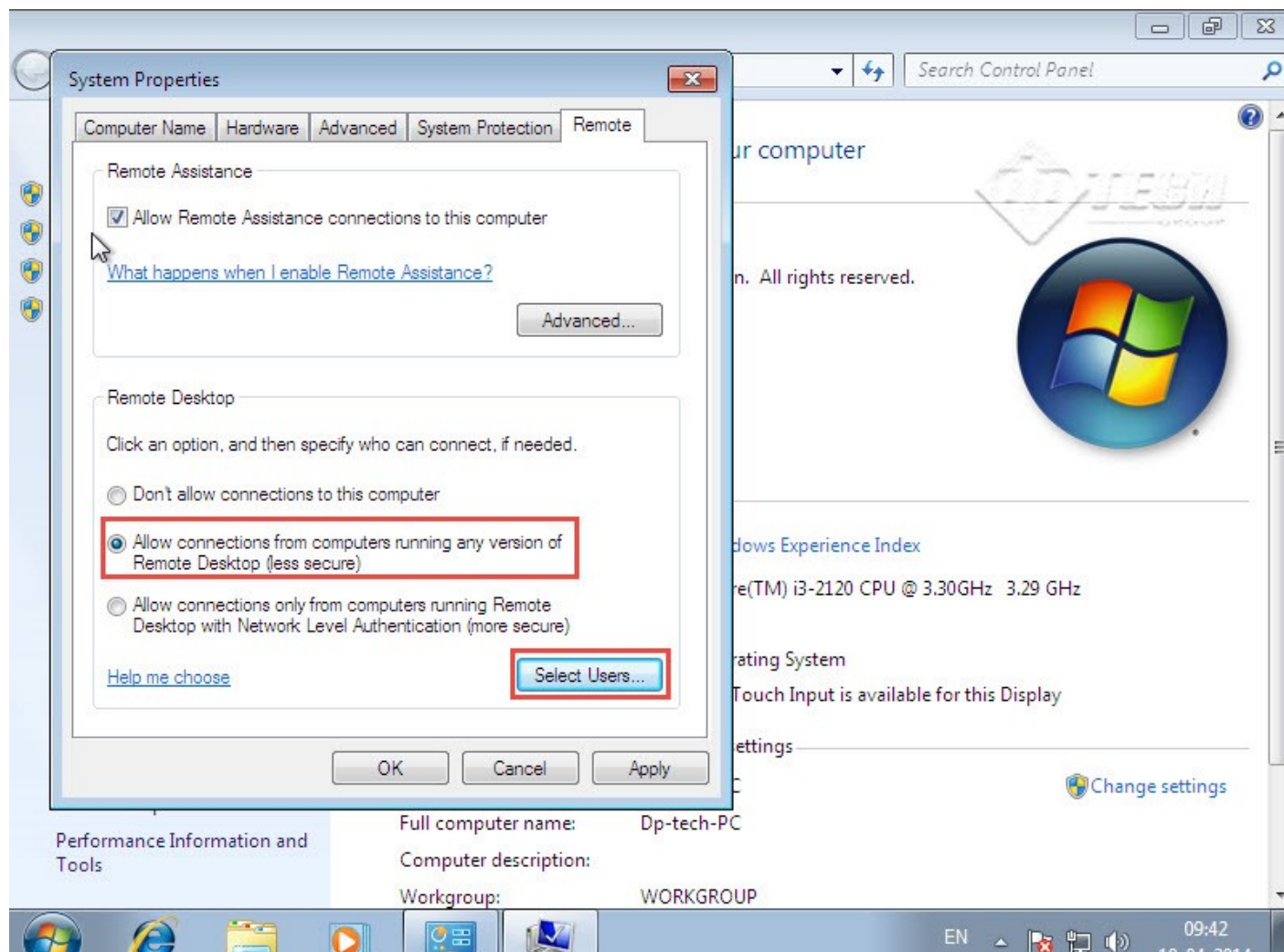
- Click the START button.
- Right click the Computer icon and click Properties.



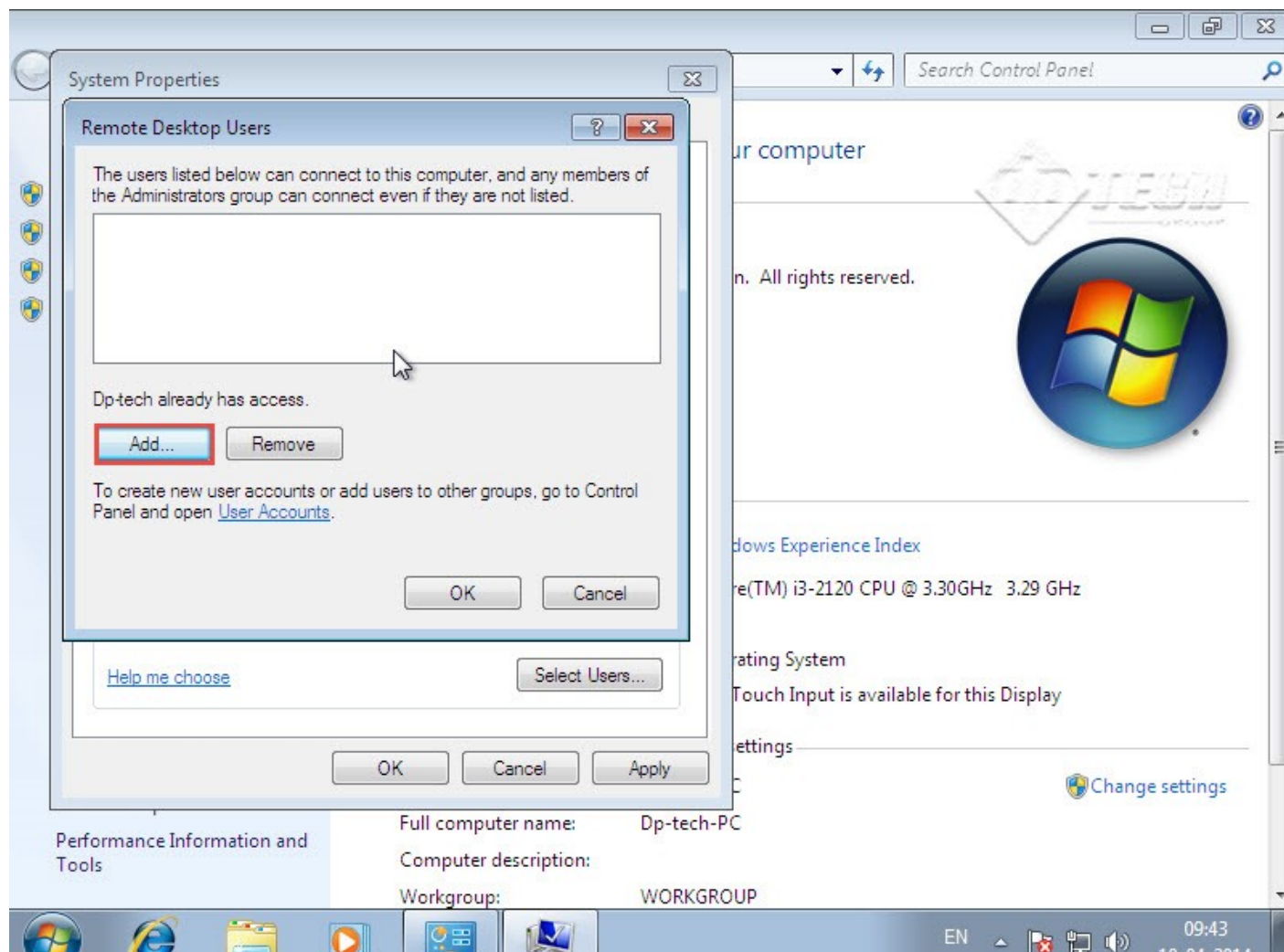
- Click the Remote Settings tab on the left-side of the new window.



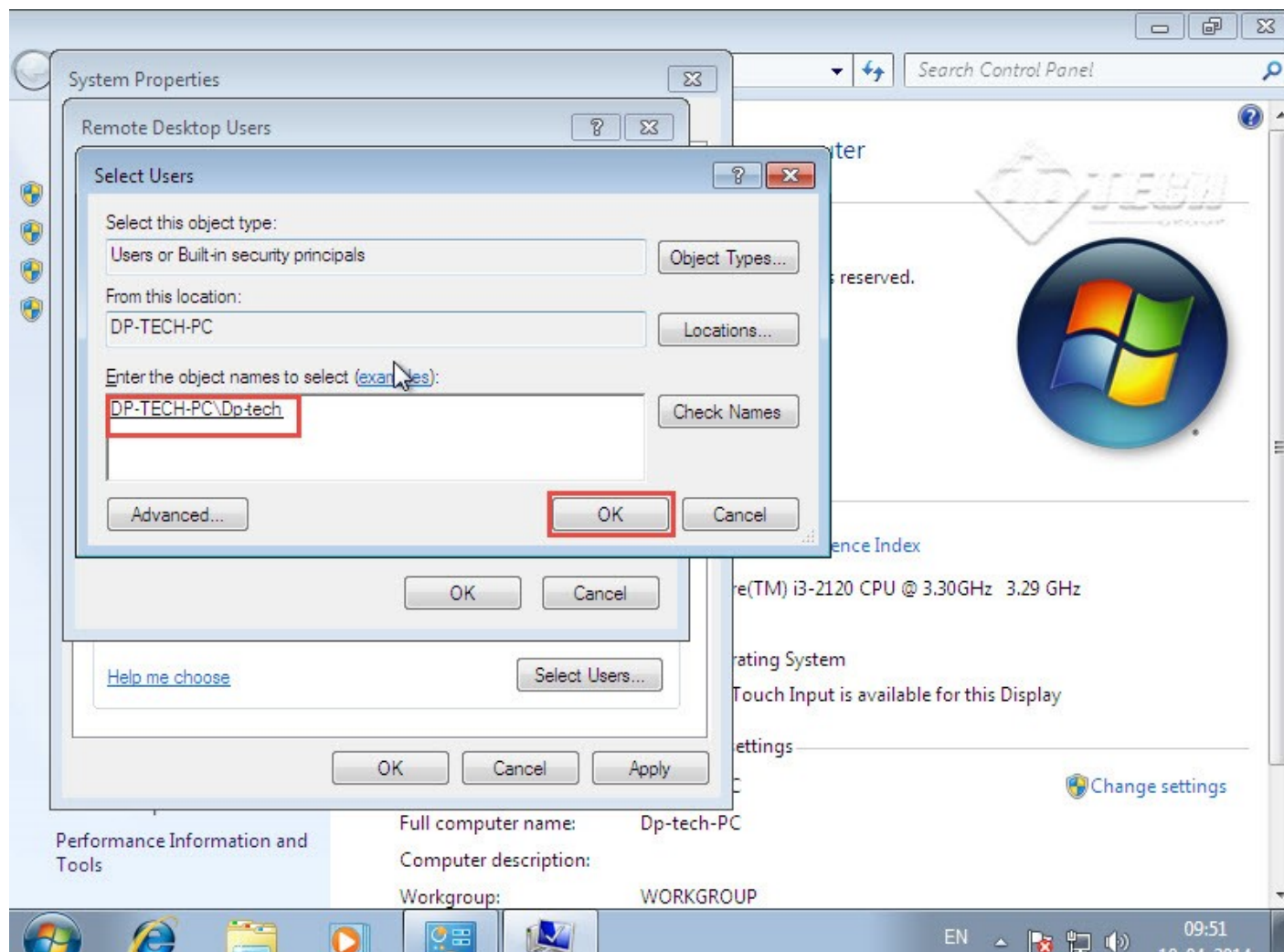
- A system Properties screen will open up. Select Allow connections from computers running any version of Remote Desktop.
- Next, click the Select Users tab.



- The Remote Desktop Users window will now be displayed on your screen. You can now add the desired user by clicking on the Add tab.
- Once you've added the user, click OK to proceed.



- A Select Users screen will now appear. Under Enter the object name to select (examples), type in the user name and click OK.

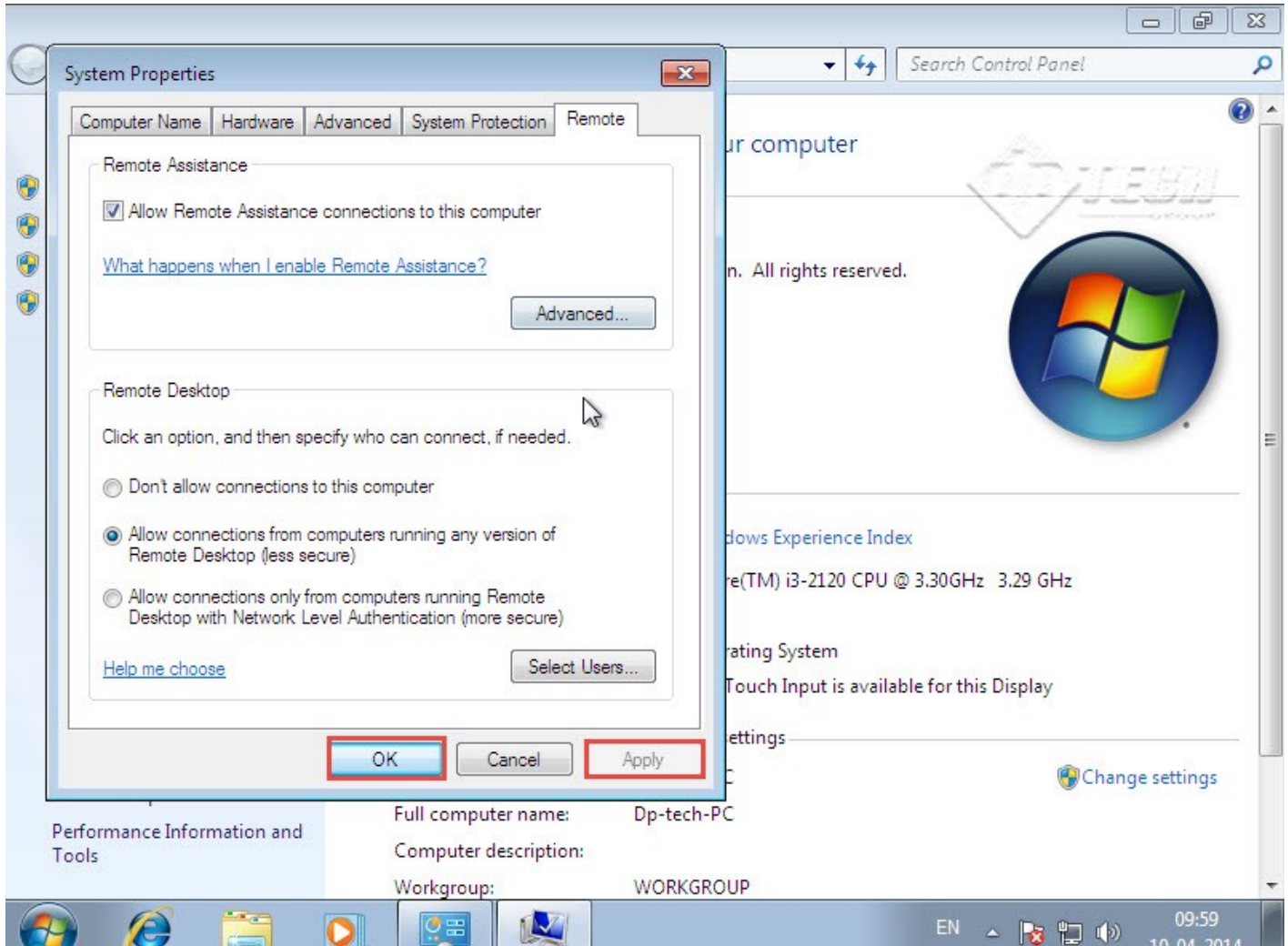


Congratulations. You've successfully added a user who can access your workstation remotely.

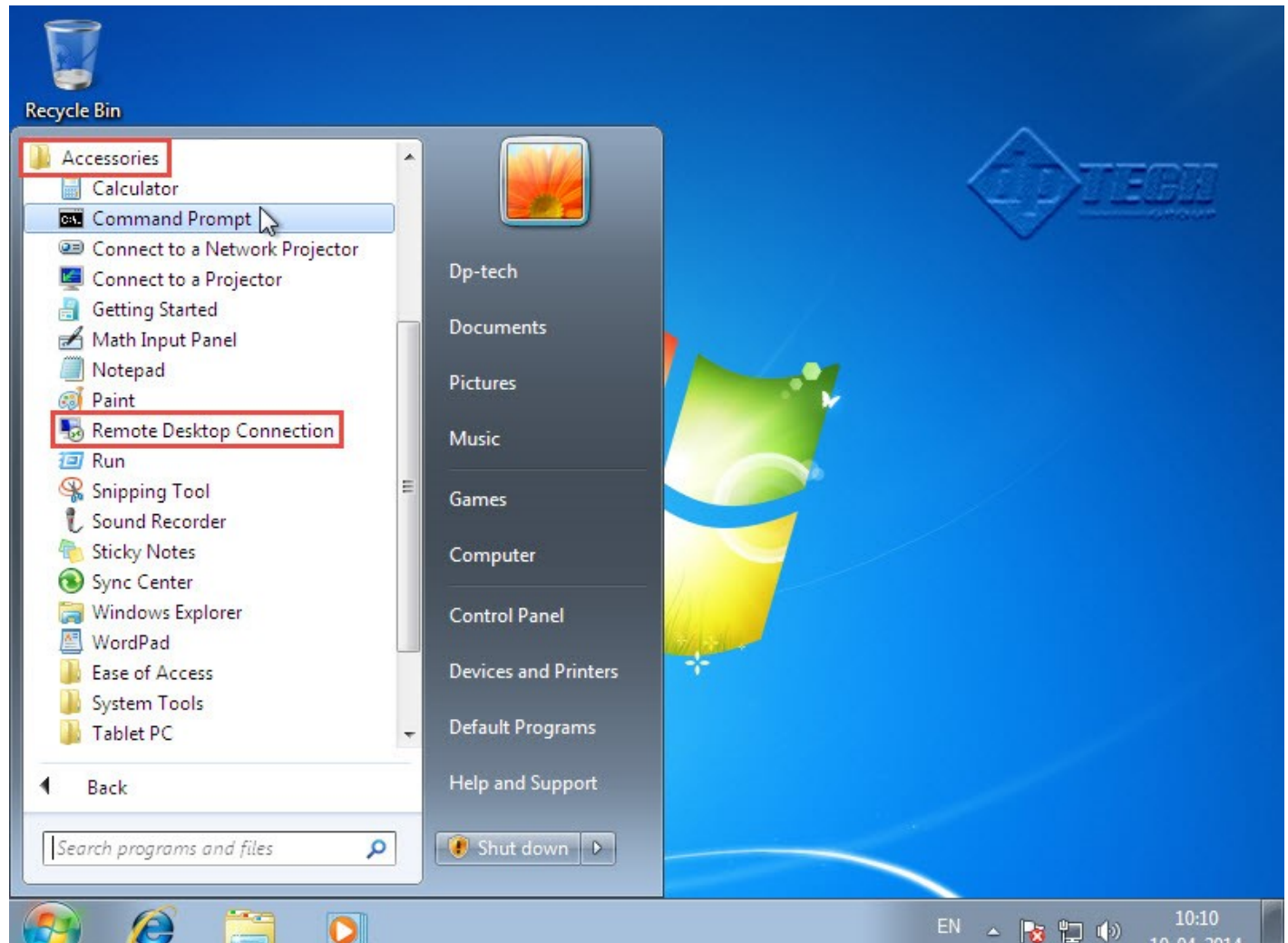
## How to Access a Computer Using Remote Connection

Now that you've enabled remote desktop connection in Windows 7, let's take a look at how to remotely access a computer system by using Remote Desktop Protocol.

- Open the Start Menu and click All Programs.

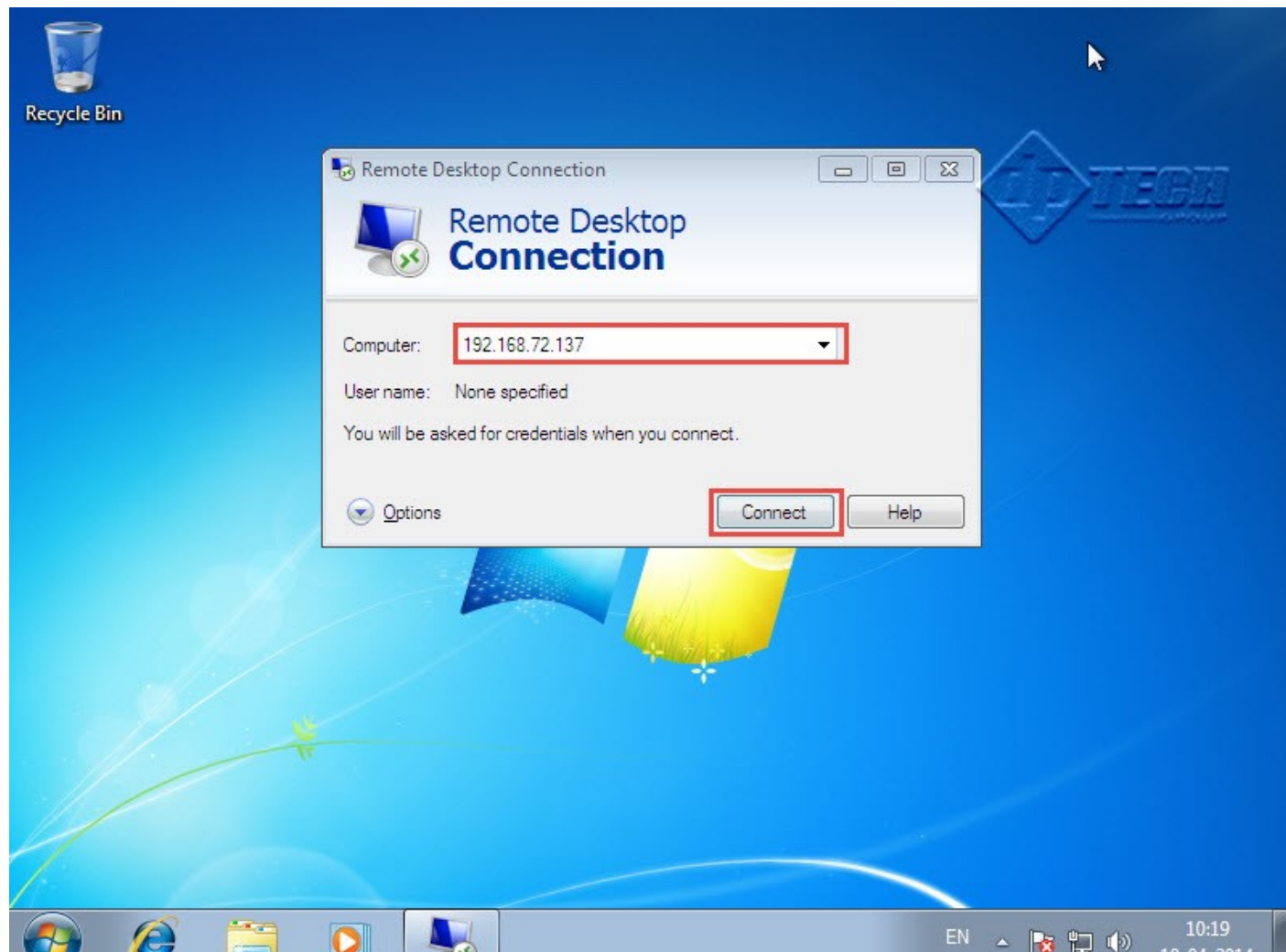


- Scroll down to Accessories and click Remote Desktop Connection.

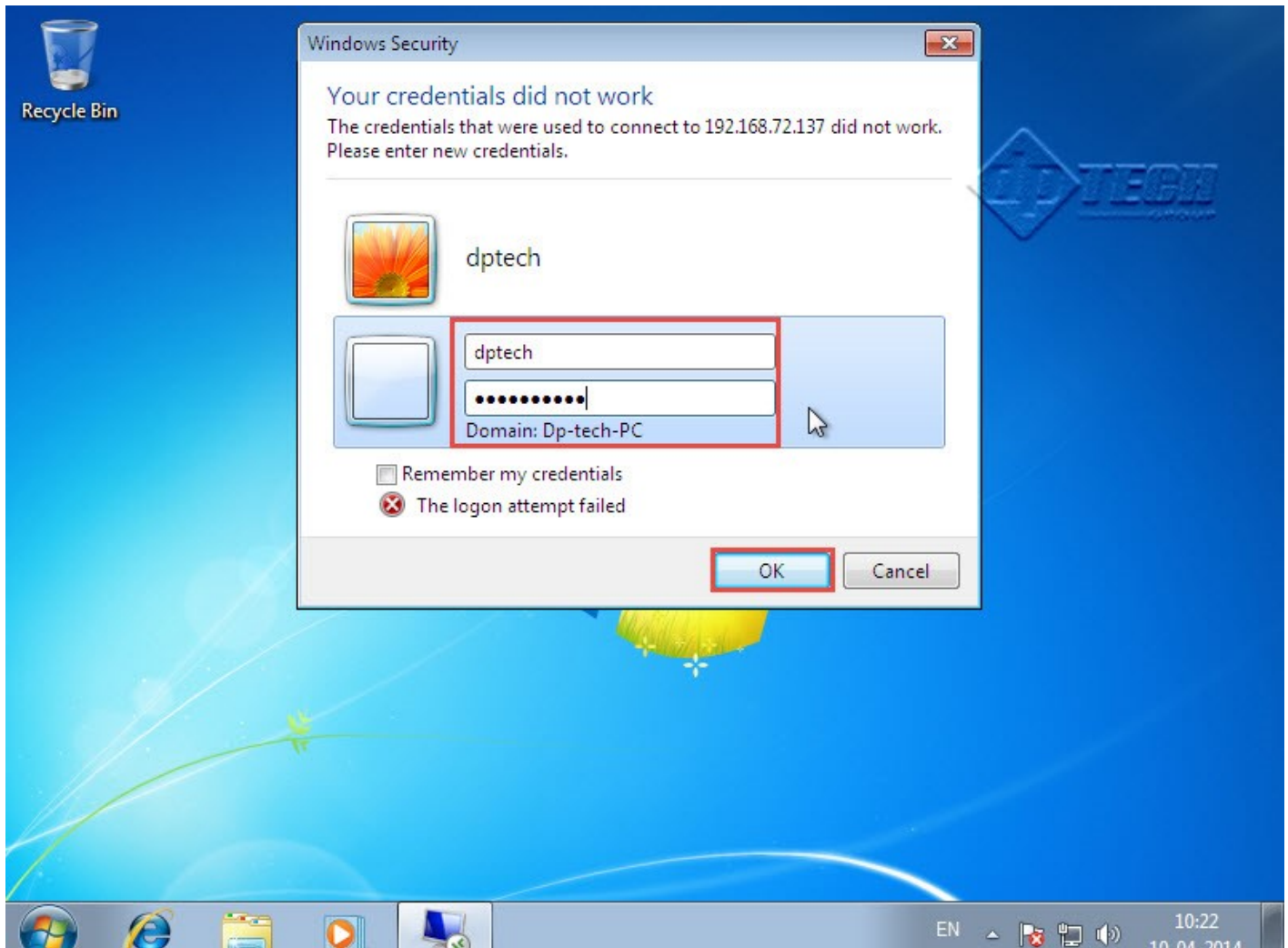


- The Remote Desktop Connection window will now appear on your screen. Provide the IP address of the destination computer.
- Click Connect to initiate the connection.

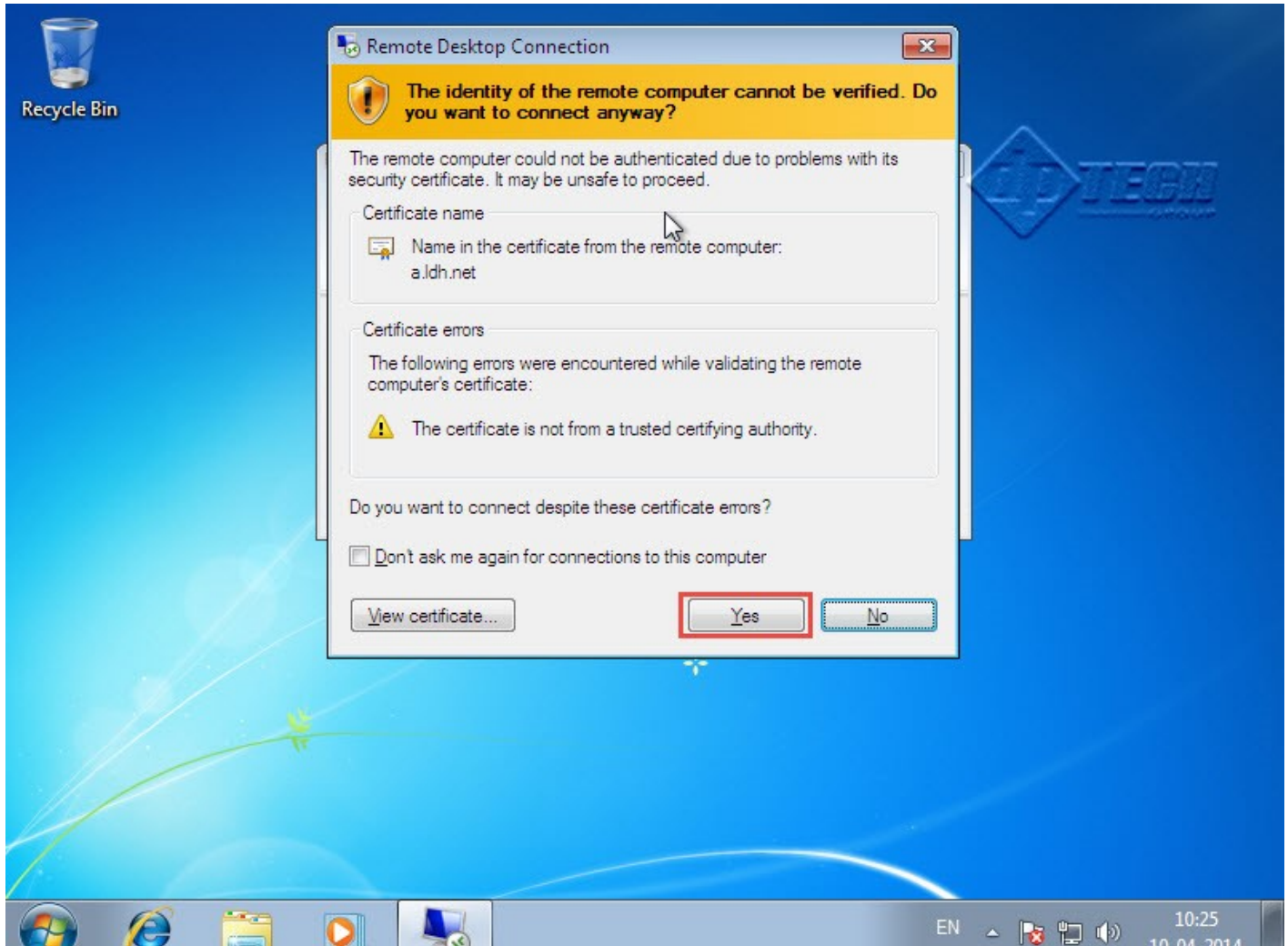




- Enter the username and password of the destination computer in the given input fields of the Windows security window.
- Once you enter the required details, click OK.



- Click Yes to ignore the certification error.



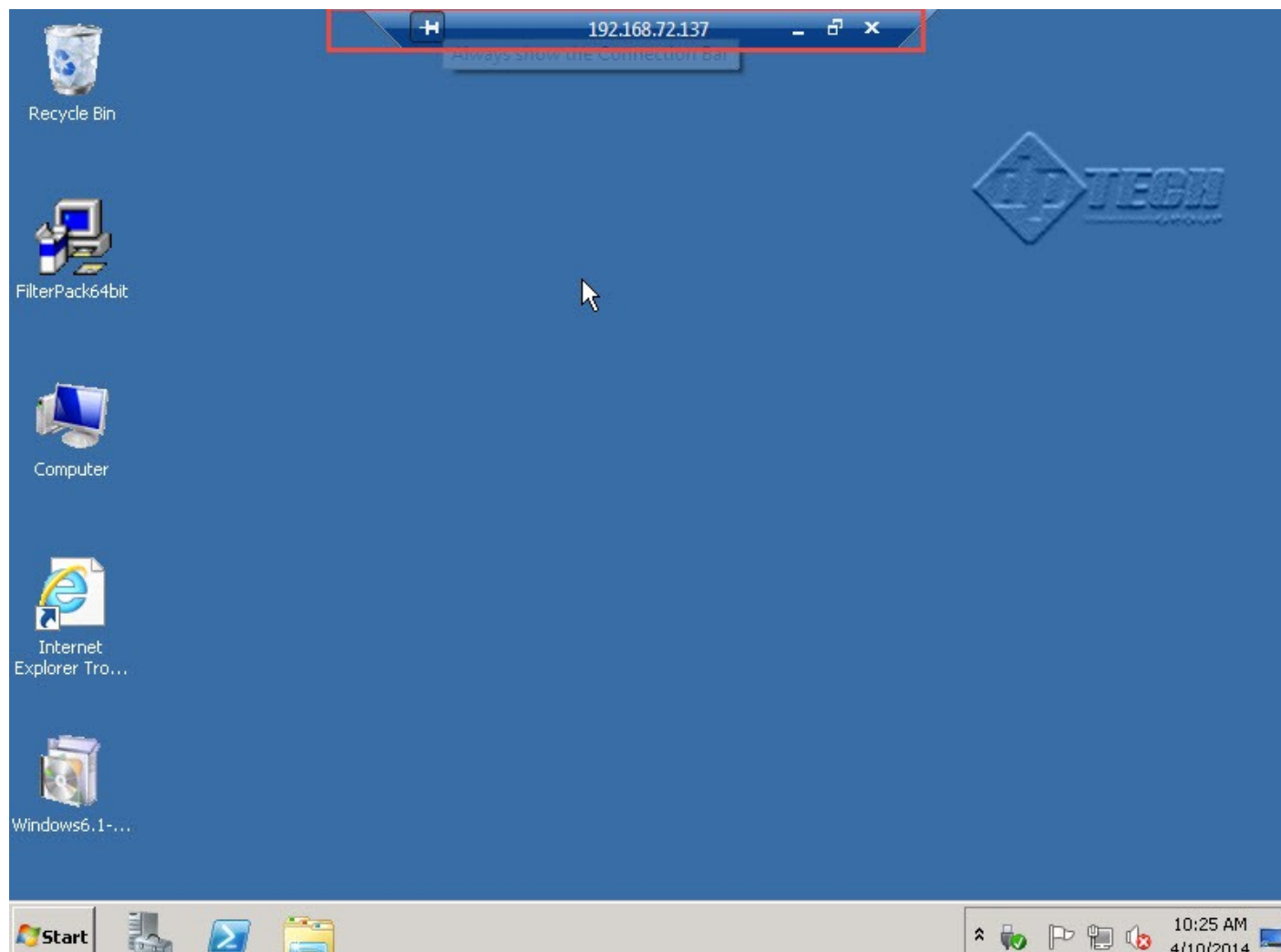
- There, you've successfully accessed the destination computer. You can even see the IP Address of the destination computer.

## PureVPN Support

Solution of Your Problems

<https://support.purevpn.com>

---



**NOTE:** You can go ahead and make desired changes on the destination computer now.

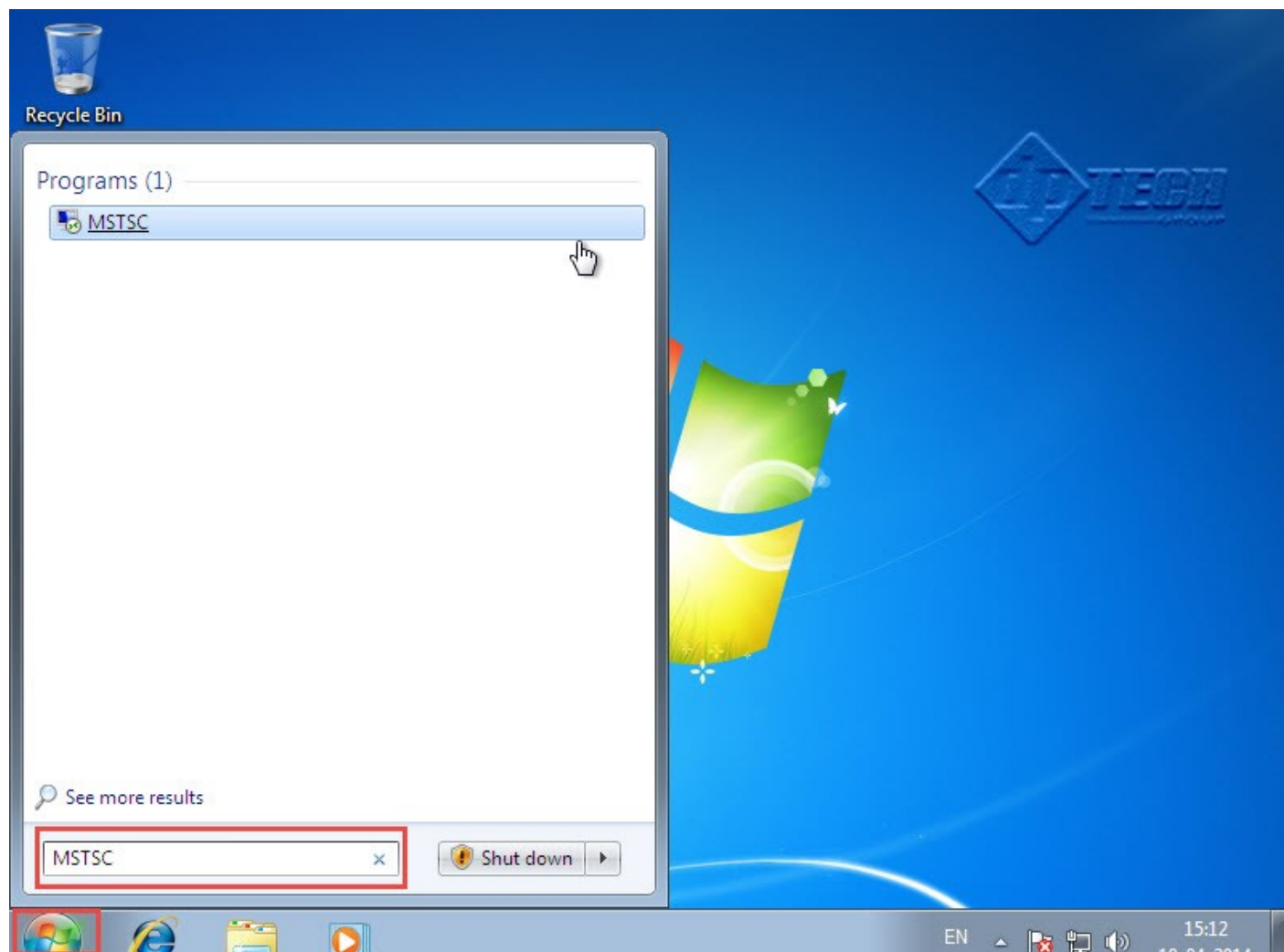
- Go to the Start menu or press the Windows key + R. Type in MSTSC in text box.

## PureVPN Support

Solution of Your Problems

<https://support.purevpn.com>

---



**Note:** To establish RDP after connecting PureVPN, all you need is to connect PureVPN [Dedicated IP](#) on the system you would like to remotely access.