

## How to setup PureVPN on Synology NAS

Set up and connect PureVPN on Synology NAS using this simple guide. Unleash the ultimate home-based cloud experience which is fast, secure, and reliable with PureVPN

### Things to Consider:

1. You have a working internet connection
2. Synology NAS Supported Device.
3. A Premium PureVPN account (If you haven't bought yet click [here](#) to buy)

Find your VPN credentials for manual configuration.

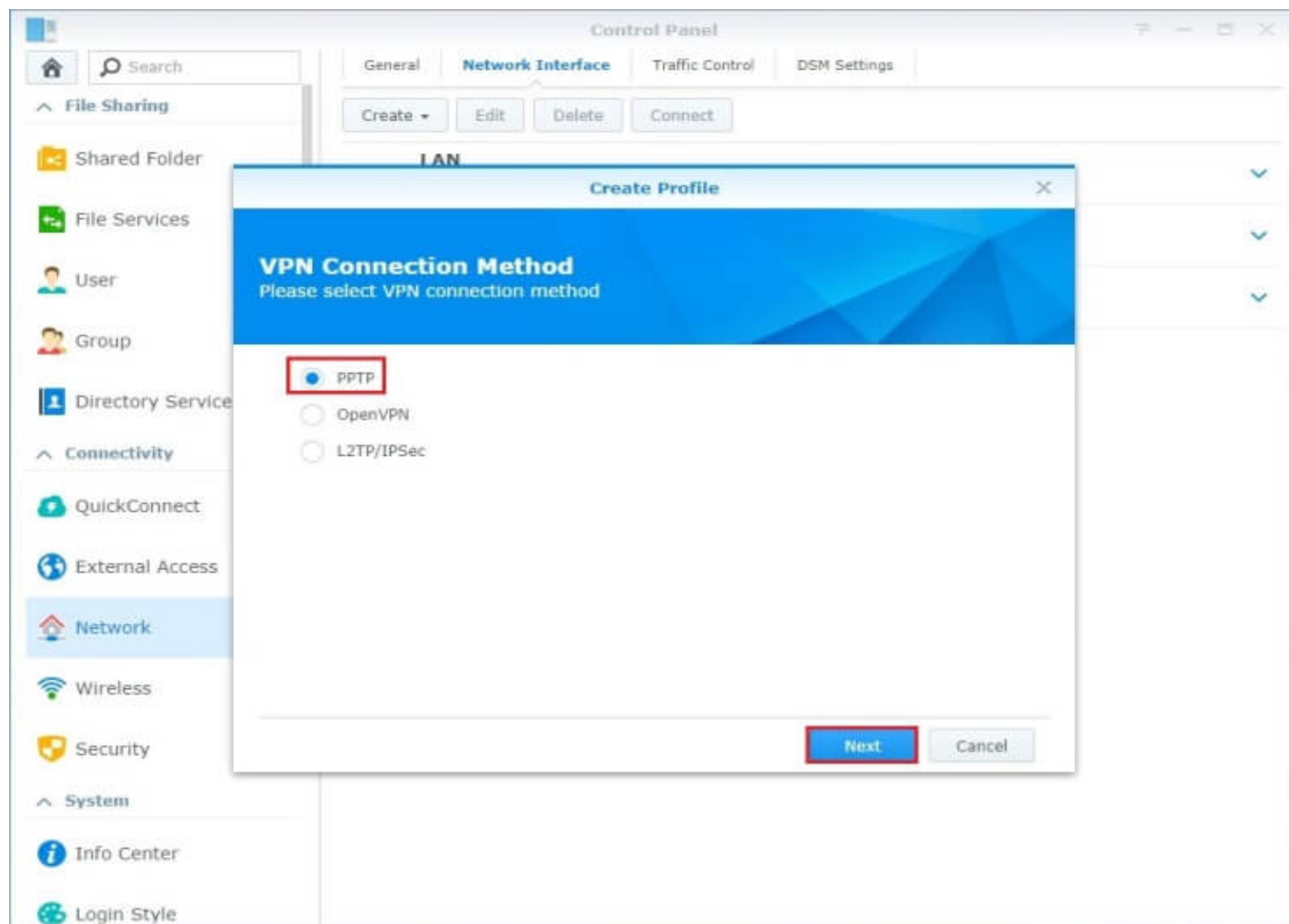
To find your VPN credentials log into the PureVPN members area. Click ? [here](#) to visit member area.

- Login to the **Member area** using your PureVPN registered email address and password.



## How to setup PPTP on Synology

- To begin, please enter the Control Panel on your Synology and choose Network in the left sidebar:
- Choose Network Interface in the top menu bar to create your VPN profile.
- Select **PPTP** as your VPN connection method and select **Next**.



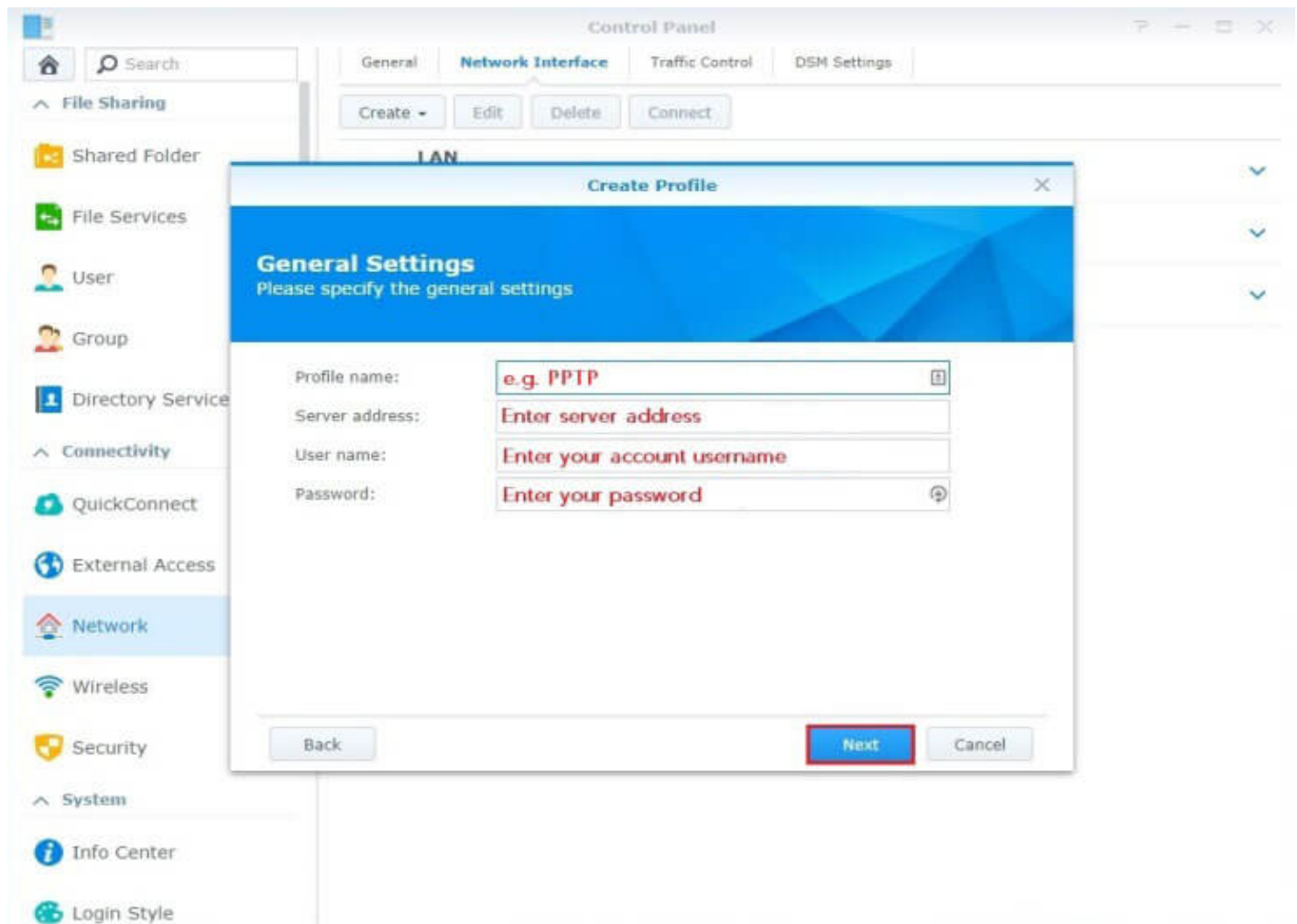
- To create a VPN profile, you need to specify the general settings as explained below.
- Profile name: You can name your profile anything you like – e.g. PureVPN US.
- Insert the desired server: Please refer to the server address shared below.
  1. Germany: de1.pointtoserver.com
  2. Netherlands: nl1.pointtoserver.com
  3. United Kingdom: uk1.pointtoserver.com
  4. United States: us1.pointtoserver.com

## PureVPN Support

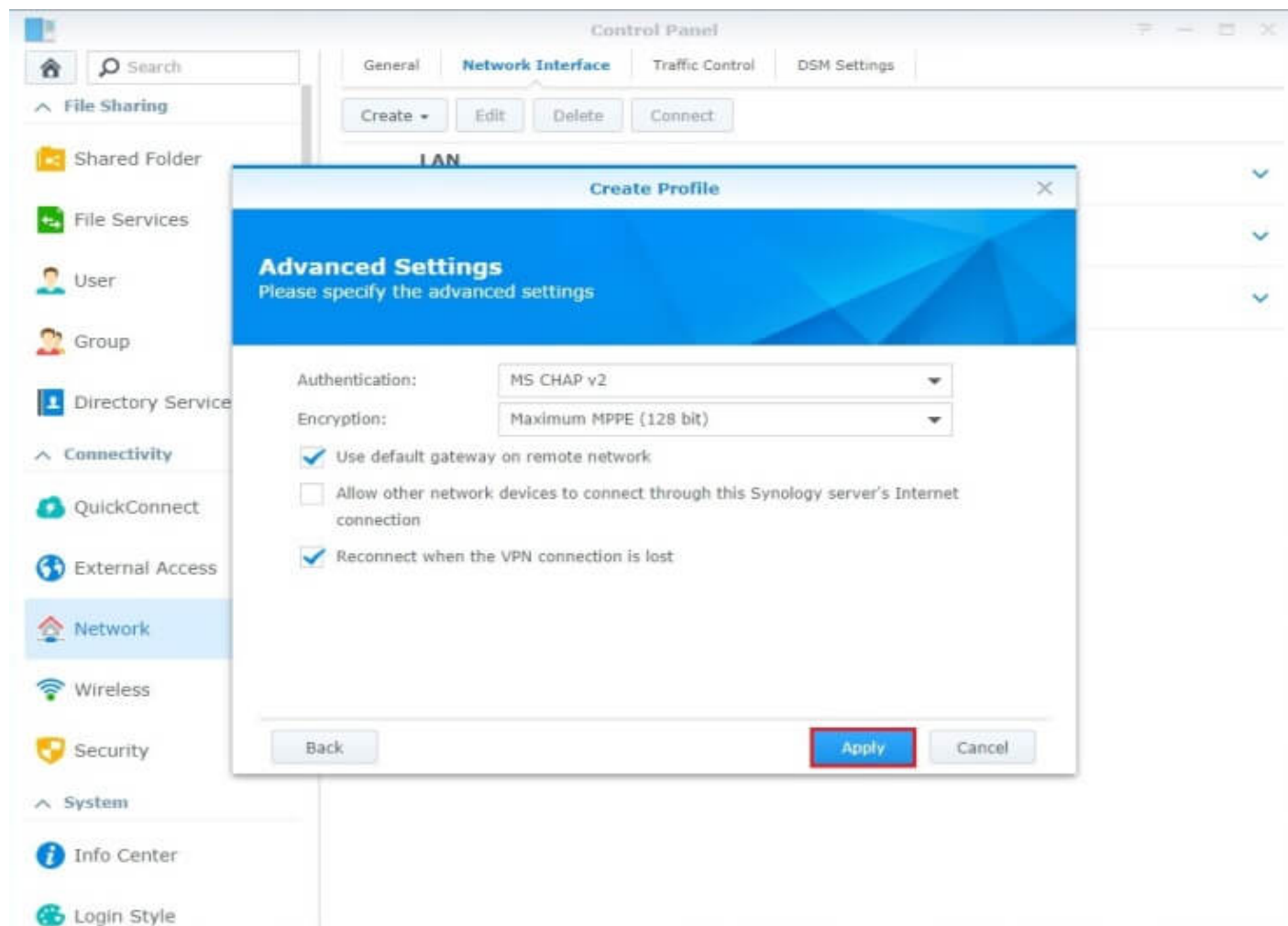
Solution of Your Problems

<https://support.purevpn.com>

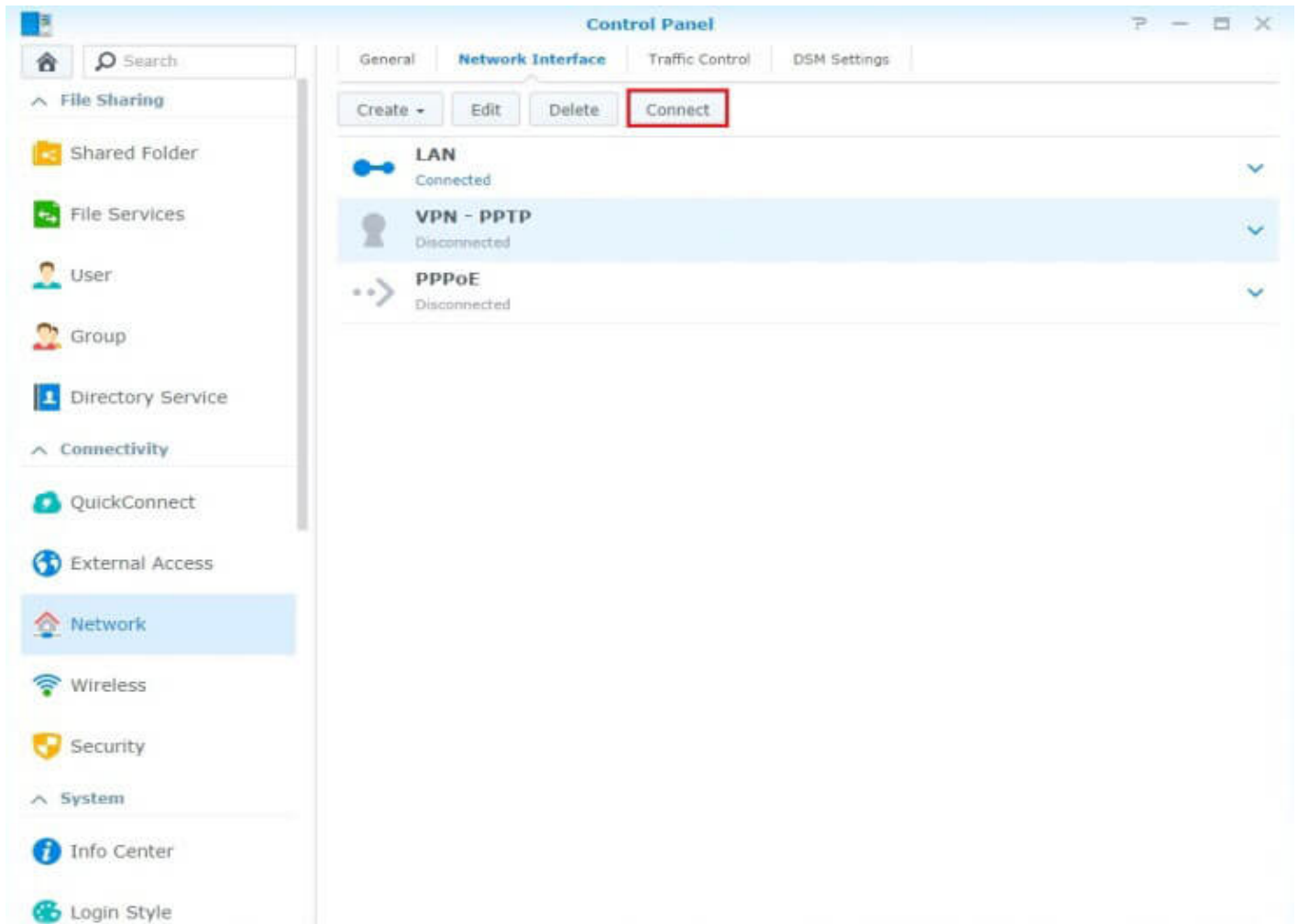
5. United States: ustx1.pointtoserver.com
  6. United States: usca1.pointtoserver.com
  7. United States: usfl1.pointtoserver.com
  8. United States: usny1.pointtoserver.com
  9. United States: uswdc1.pointtoserver.com
  10. Australia: au-sd1.pointtoserver.com
- Enter your PureVPN credentials. Here is how you can [find your VPN credentials](#).



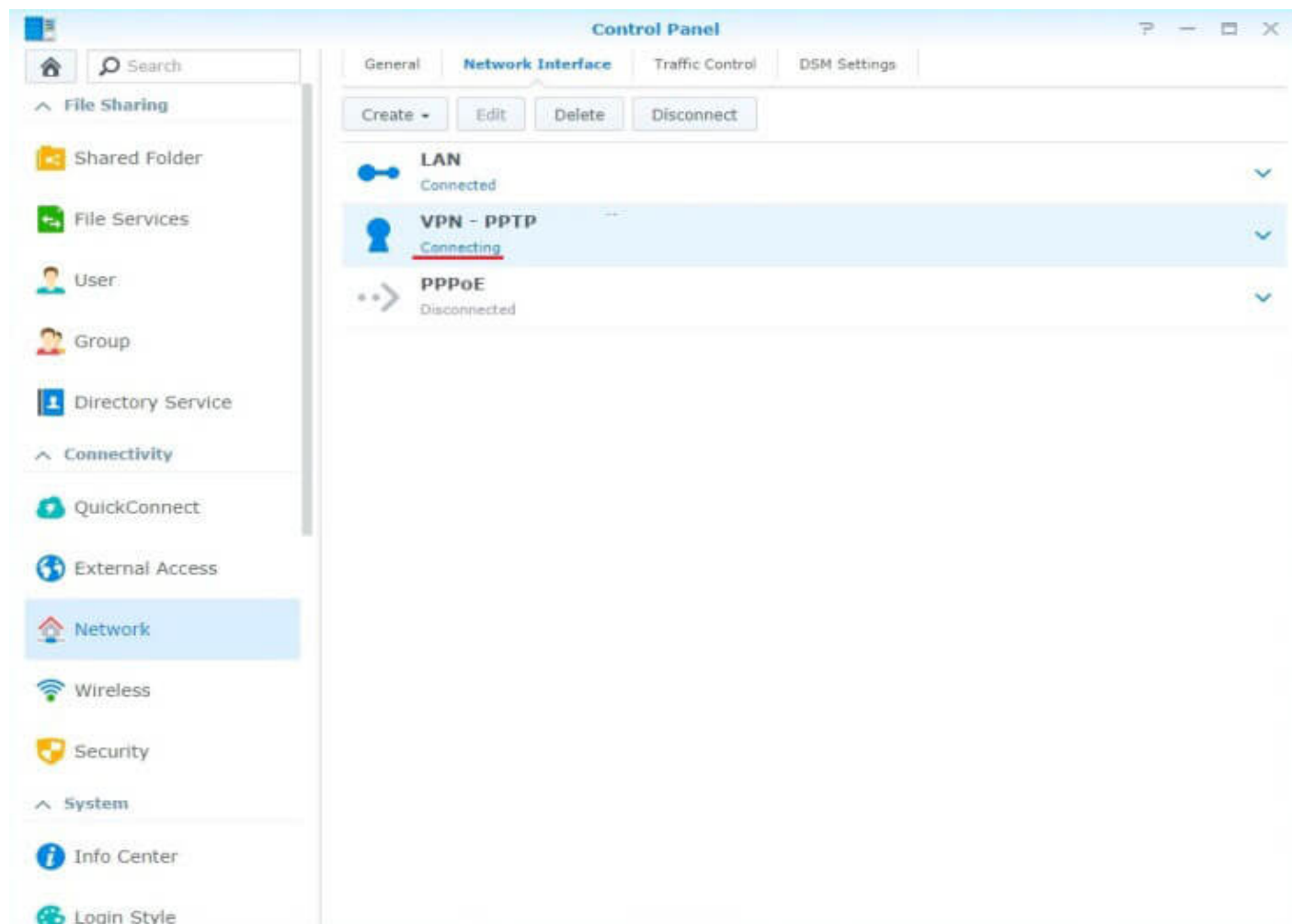
- When you're done, click **Next**
- You will now be redirected to Advanced settings where you will fill them out as follows.
- Authentication: Choose MS CHAP v2 from the drop-down menu.
- Encryption: Choose Maximum MPPE (128 bit) from the drop-down menu.
- Make sure you tick the following options only:
- Use default gateway on remote network.
- Reconnect when the VPN connection is lost.



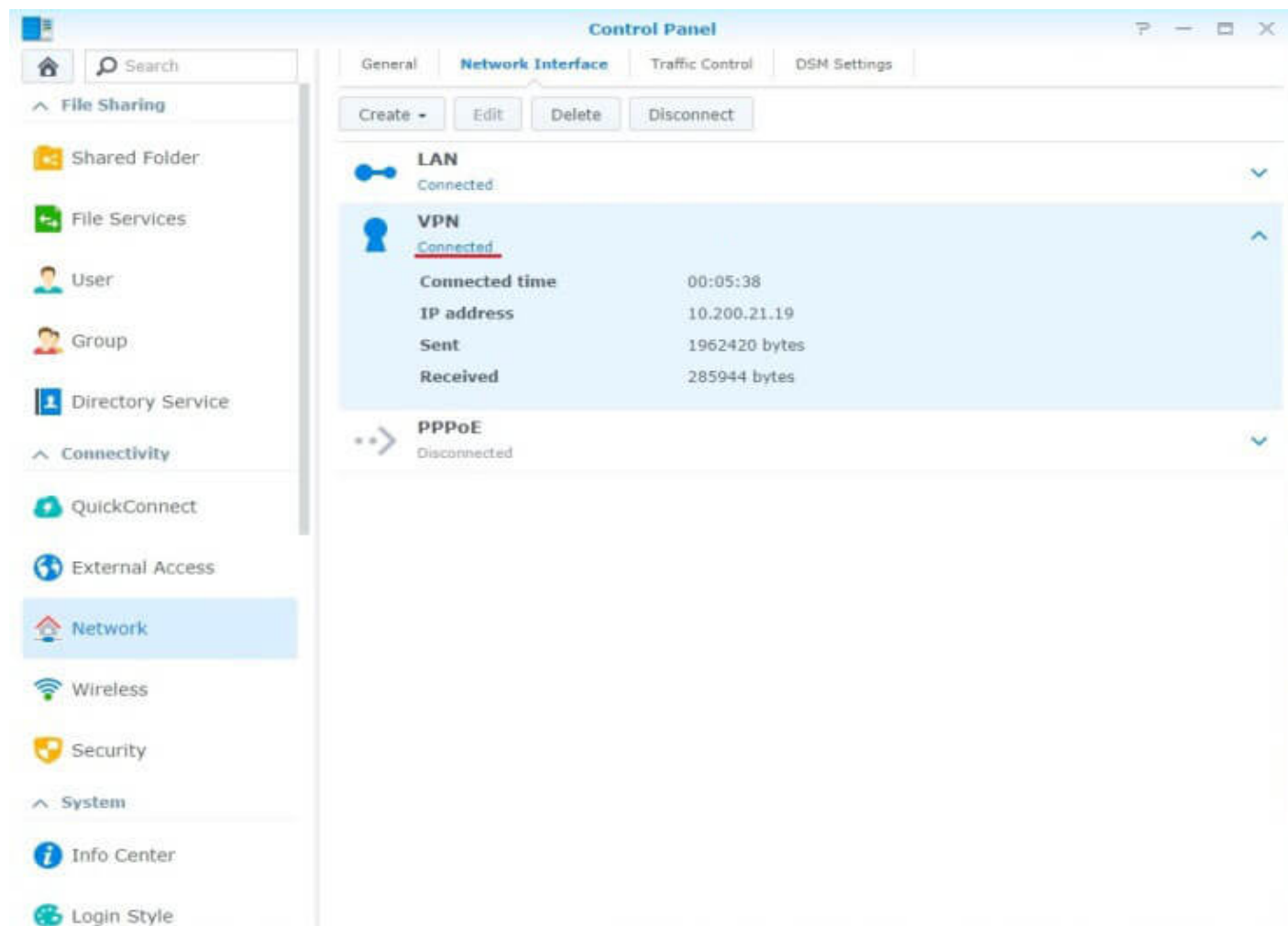
- When you're done, click **Apply**.
- Now you'll see that your VPN profile has been created – to establish a VPN connection, click **Connect**.



- The status of your profile will now change from Disconnected to Connecting.



- Once you have established a connection, the status of your VPN profile will change to Connected and you will be able to see the duration of your connection, your new IP address as well as bytes sent and received.

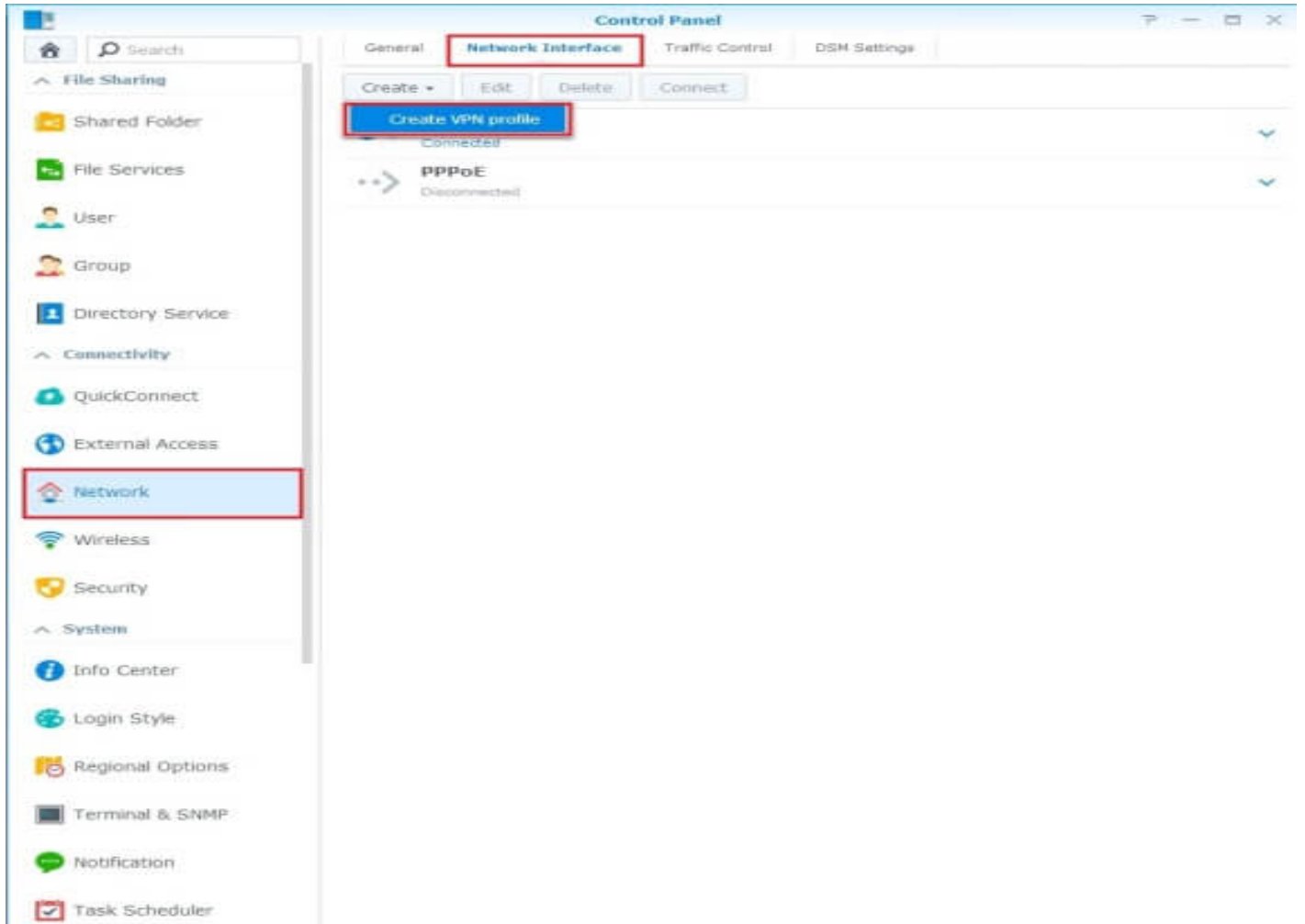


- To disconnect, just click **Disconnect** ?

### How to setup L2TP/ IPSec on Synology

- In your Synology's Control Panel, click Network and then the Network Interface tab. Below, click Create > **Create VPN profile**.





- In the new window, select **L2TP/ IPSec**.

**Create Profile** [X]

**VPN Connection Method**  
Please select VPN connection method

PPTP

OpenVPN

L2TP/IPSec

**Next** **Cancel**

- Now fill in the general settings of your VPN profile as follows:
- Profile name: You can name this anything you like, e.g. the country/name of the server you're connecting to.
- Insert the desired server: Please refer to the server address shared below.
  1. Germany: de1.pointtoserver.com
  2. Netherlands: nl1.pointtoserver.com
  3. United Kingdom: uk1.pointtoserver.com
  4. United States: usil1.pointtoserver.com
  5. United States: ustx1.pointtoserver.com
  6. United States: usca1.pointtoserver.com
  7. United States: usfl1.pointtoserver.com
  8. United States: usny1.pointtoserver.com
  9. United States: uswdc1.pointtoserver.com
  10. Australia: au-sd1.pointtoserver.com
- User name: Here you should enter your PureVPN username

- Password: Your PureVPN password
- Pre-shared key: Here, please type 12345678

The screenshot shows a 'Create Profile' dialog box with a blue header and a white body. The title bar says 'Create Profile' with a close button. Below the header, the text 'General Settings' is displayed in white on a blue background, followed by 'Please specify the general settings'. The form contains five input fields with red placeholder text: 'Profile name: Name it anything you like', 'Server address: Enter server address', 'User name: Enter your account username', 'Password: Enter your password', and 'Pre-shared key: 12345678'. At the bottom, there are three buttons: 'Back', 'Next' (highlighted with a red border), and 'Cancel'.

- The advanced settings of your VPN profile should be set as follows.
- Authentication: Choose MS CHAP v2 from the drop-down menu.
- Please check (tick) the Use default gateway on remote network and Reconnect when the VPN connection is lost options.

Create Profile X

## Advanced Settings

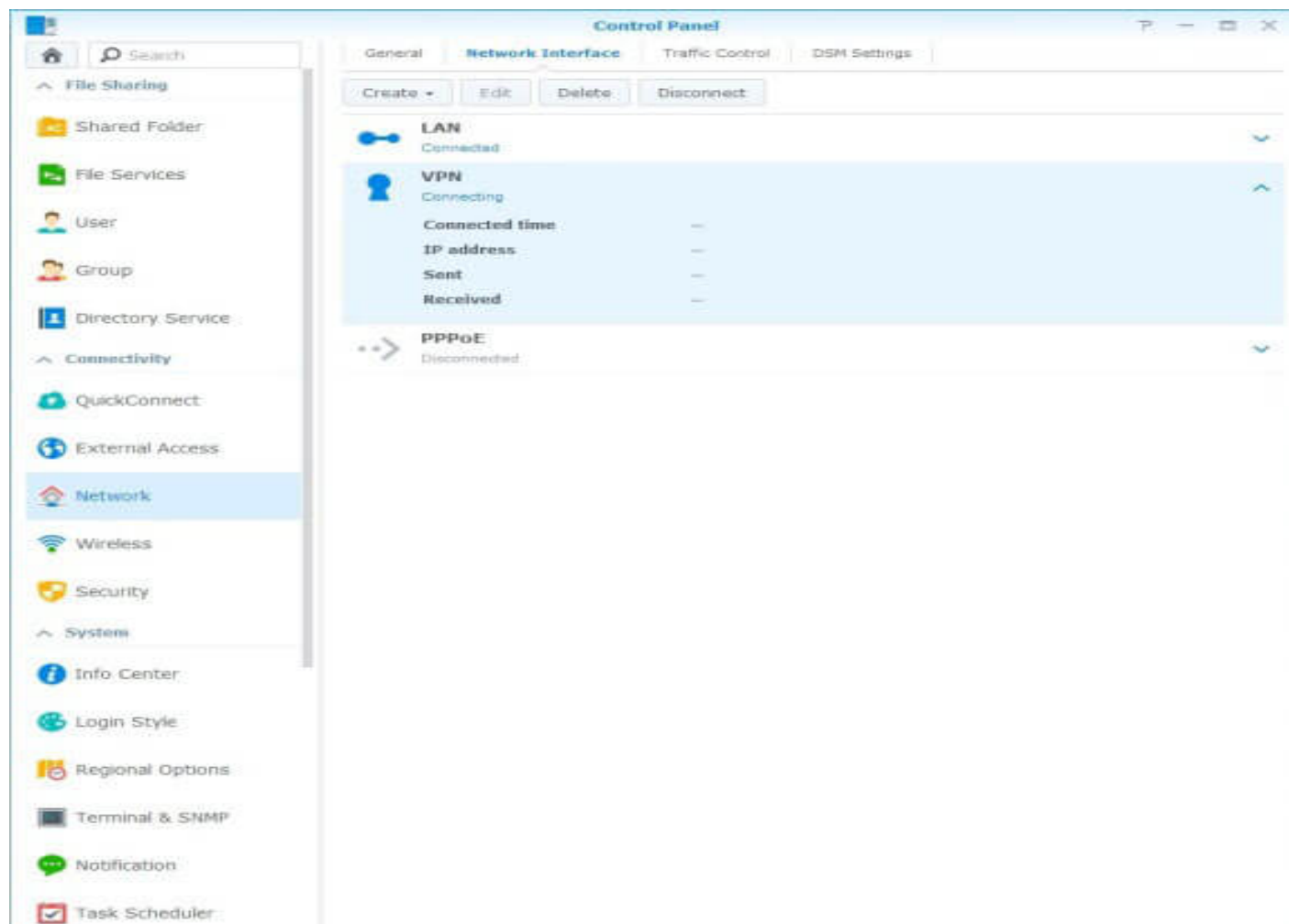
Please specify the advanced settings

Authentication: MS CHAP v2

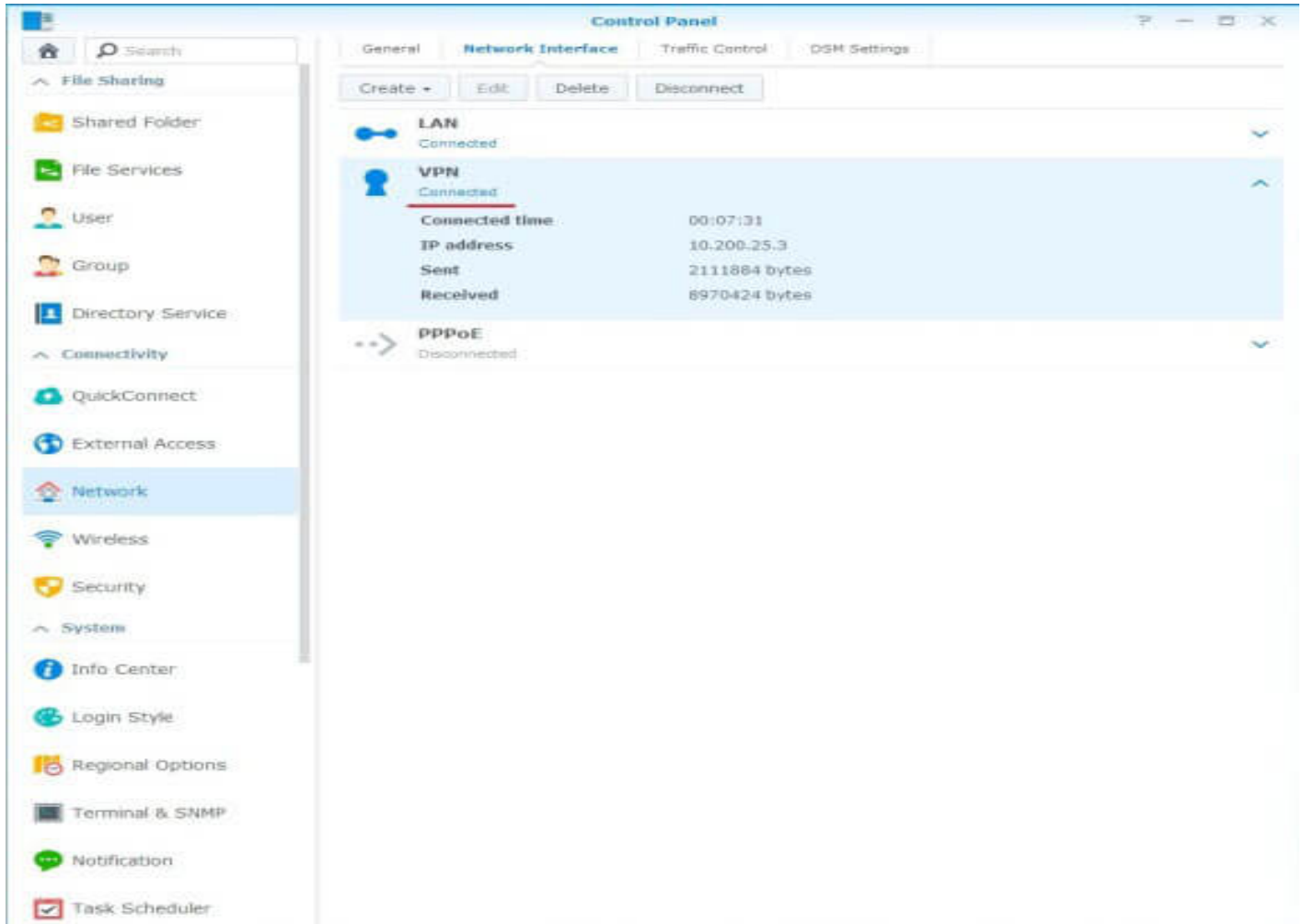
- Use default gateway on remote network
- Allow other network devices to connect through this Synology server's Internet connection
- Server is behind NAT device
- Reconnect when the VPN connection is lost

Back Apply Cancel

- Now that you've created your VPN profile, you can click **Connect** whenever you wish.

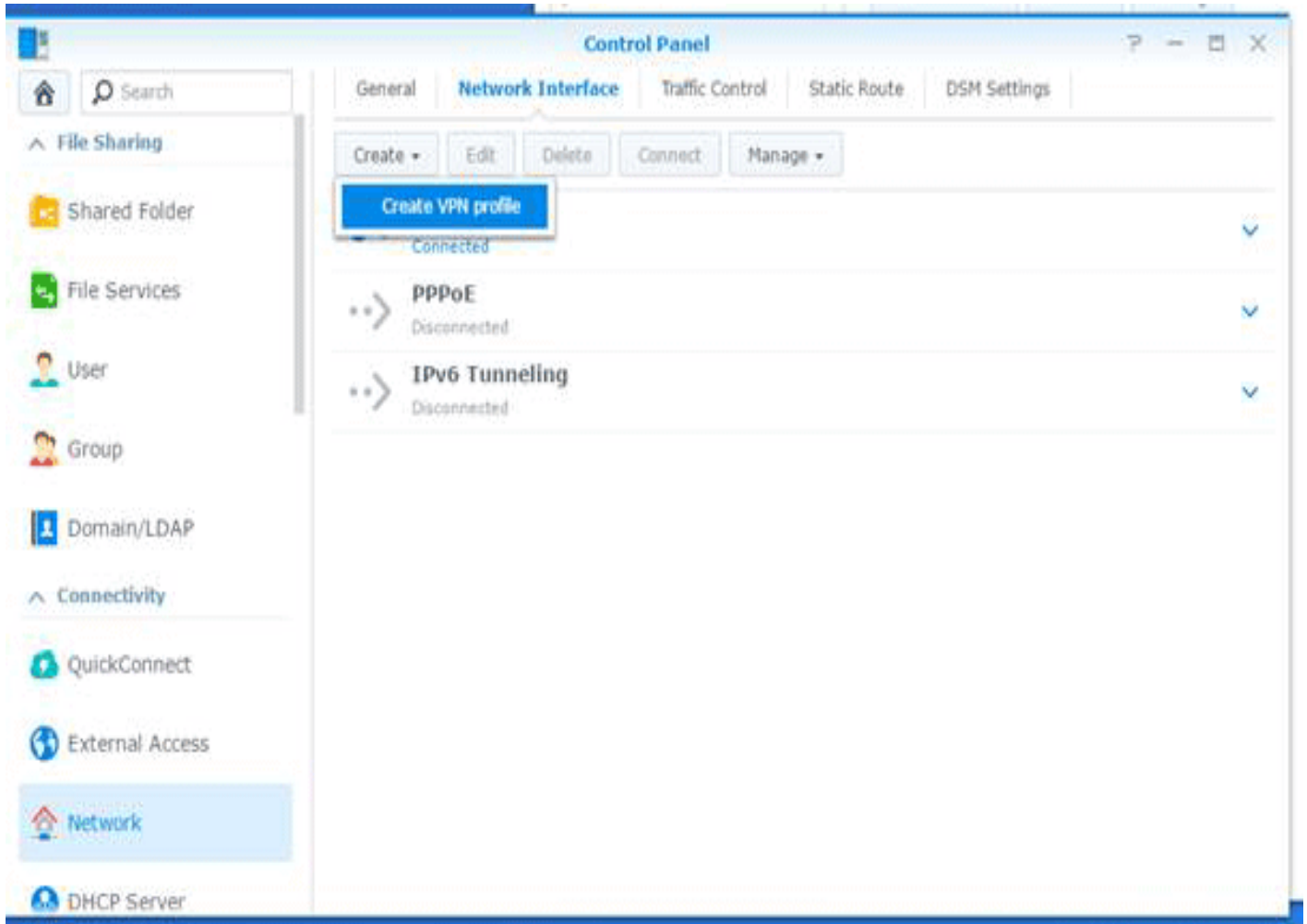


- The status of your profile will now change to Connecting. Please note that this usually takes under a minute, but might take just a bit longer...
- After waiting for your connection status to change to Connected, you can refresh your page if you wish.



## How to setup OpenVPN on Synology

- Log into your administration console usually [Open Control Panel](#).
- Click the **Network Interface** tab
- Click Create > **Create VPN profile**



- Select **OpenVPN** (via importing a .ovpn file) and click **Next**.

## VPN Connection Method

Please select VPN connection method

- PPTP
- OpenVPN
- OpenVPN (via importing a .ovpn file)
- L2TP/IPSec

---

**Next**

Cancel

- You can find the list of all available locations [here](#) for OpenVPN.
- Click **Linux link**, download and extract the zip file.
- Enter the Profile name (a name which you'll see in the Network Interfaces list), your PureVPN Credentials. Click the **Browse button** next to Import .ovpn file: and find the file we got from the previous step. Add the ca.crt file in CA Certificate provided with the ovpn file. Press **Next**.



Create Profile ✕

## General Settings

Please specify the general settings

Profile name:

User name:

Password:

Import .ovpn file:

CA certificate:

▼ **Advanced options**

- Enable Use default gateway on remote network \*\*\*  
If you want, enable Reconnect when the VPN connection is lost  
Press **Apply**.

Create Profile ✕

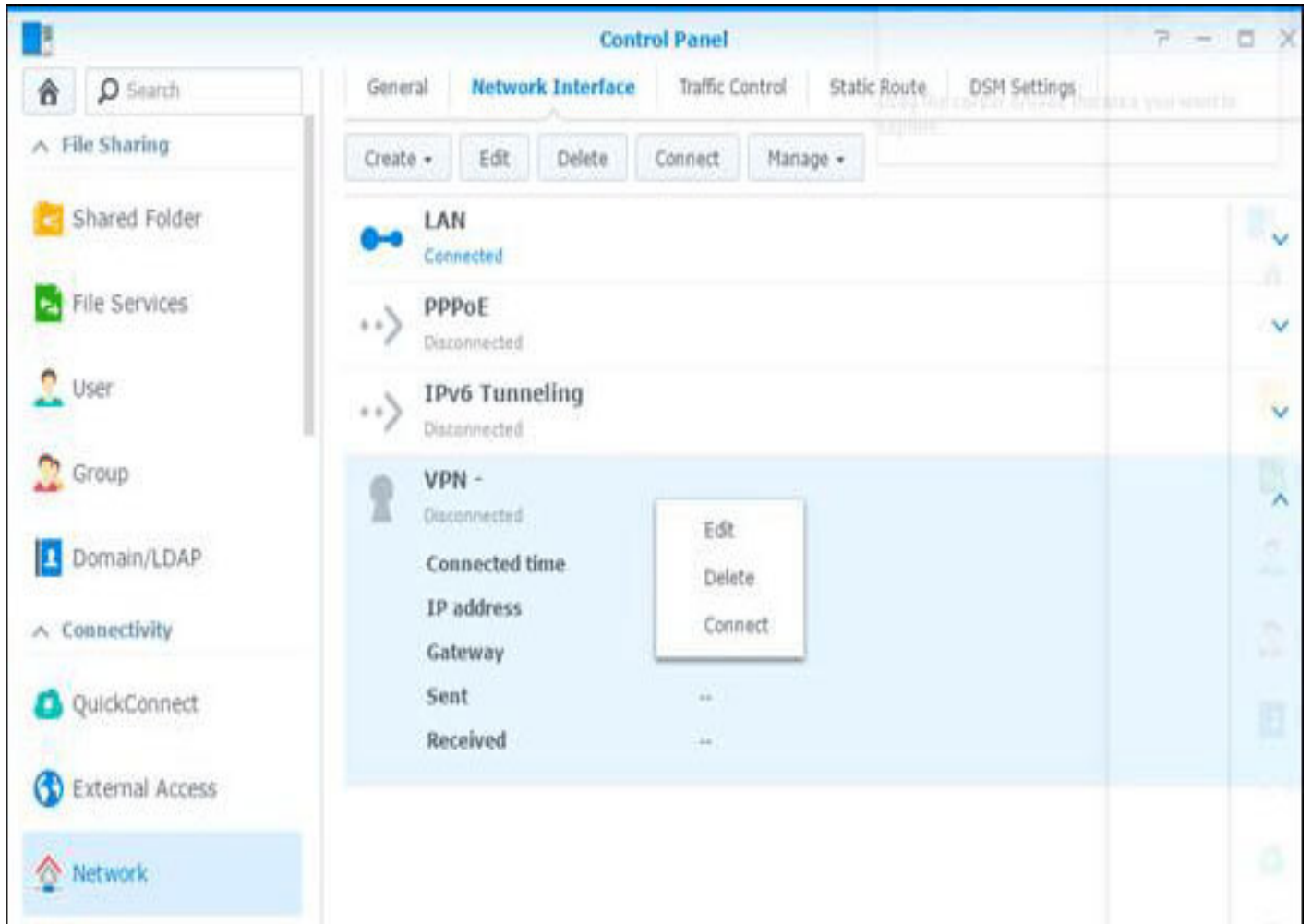
## Advanced Settings

Please specify the advanced settings

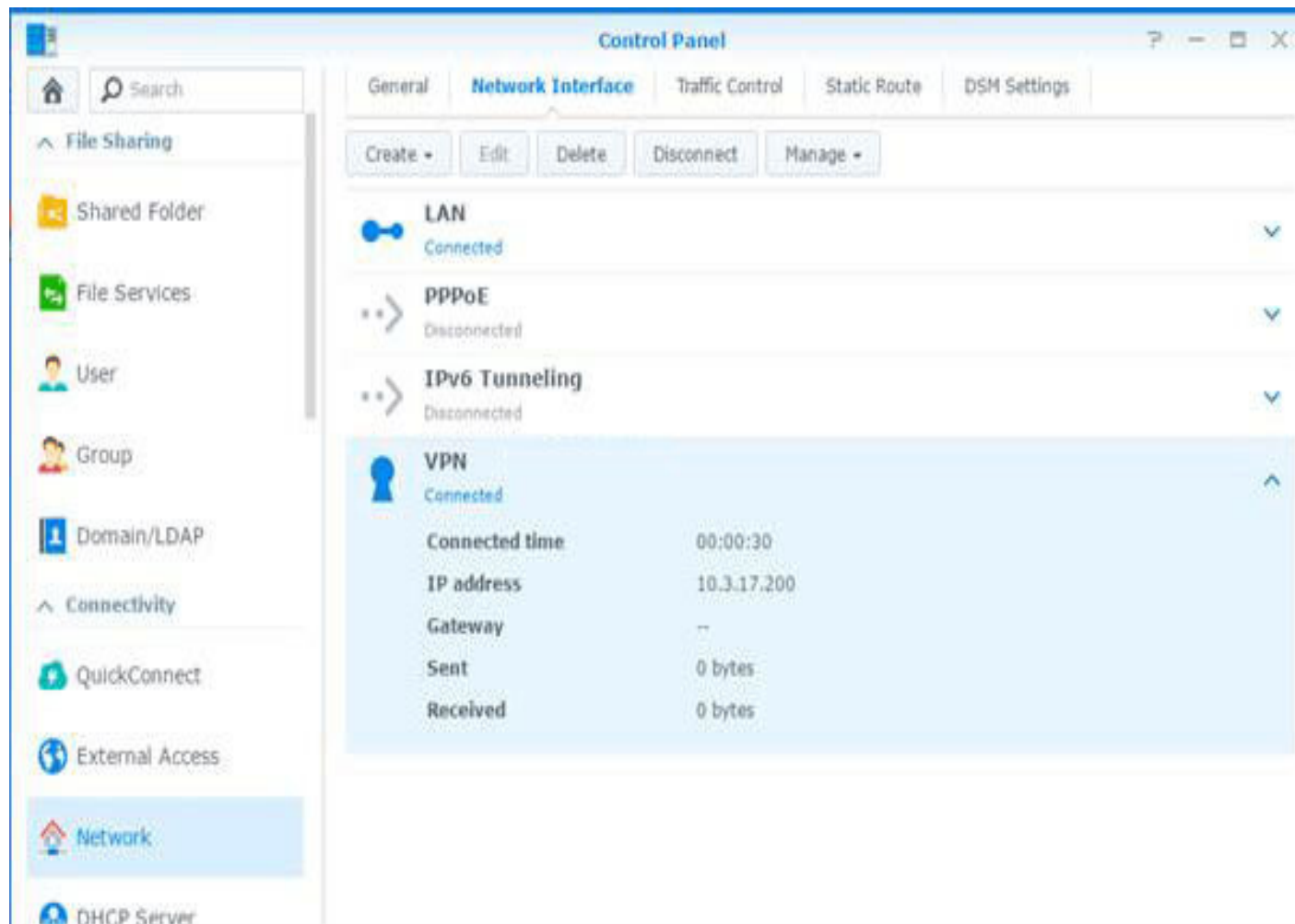
- Use default gateway on remote network
- Allow other network devices to connect through this Synology server's Internet connection
- Reconnect when the VPN connection is lost

Back Apply Cancel

- On the **Network Interfaces** menu, right-click your freshly made VPN connection and press **Connect**, or press **Connect button**.



- If the connection was successful, status below the name of connection will say Connected.



### \*\*\* Connecting to your Synology from the Outside (WAN)

In case you check the Use default gateway on remote network you might have problems connecting to your NAS over the Internet.

If you want security, you need to have this checked.

If you want to access your NAS over the internet, you have to leave this unchecked, but the connection may fail.

The reason for it is that the default gateway redirects all requests that are not within the private network over the VPN connection. You would need to connect to the VPN gateway's (external) IP, but since it is a shared IP address among everyone connected to it, it just drops the incoming connection, as the server doesn't know to whom to relay the package

Was this article helpful? Rate and share your comments below. Your input matters to us and everyone else in the Cyber Security Community.