

## How to Setup PureVPN on Windows Vista L2TP?

### Things to Consider:

Before you begin, please make sure that:

- You have a working internet connection
- Windows Supported Device.
- A Premium PureVPN account (If you haven't bought yet [click here](#) to buy)

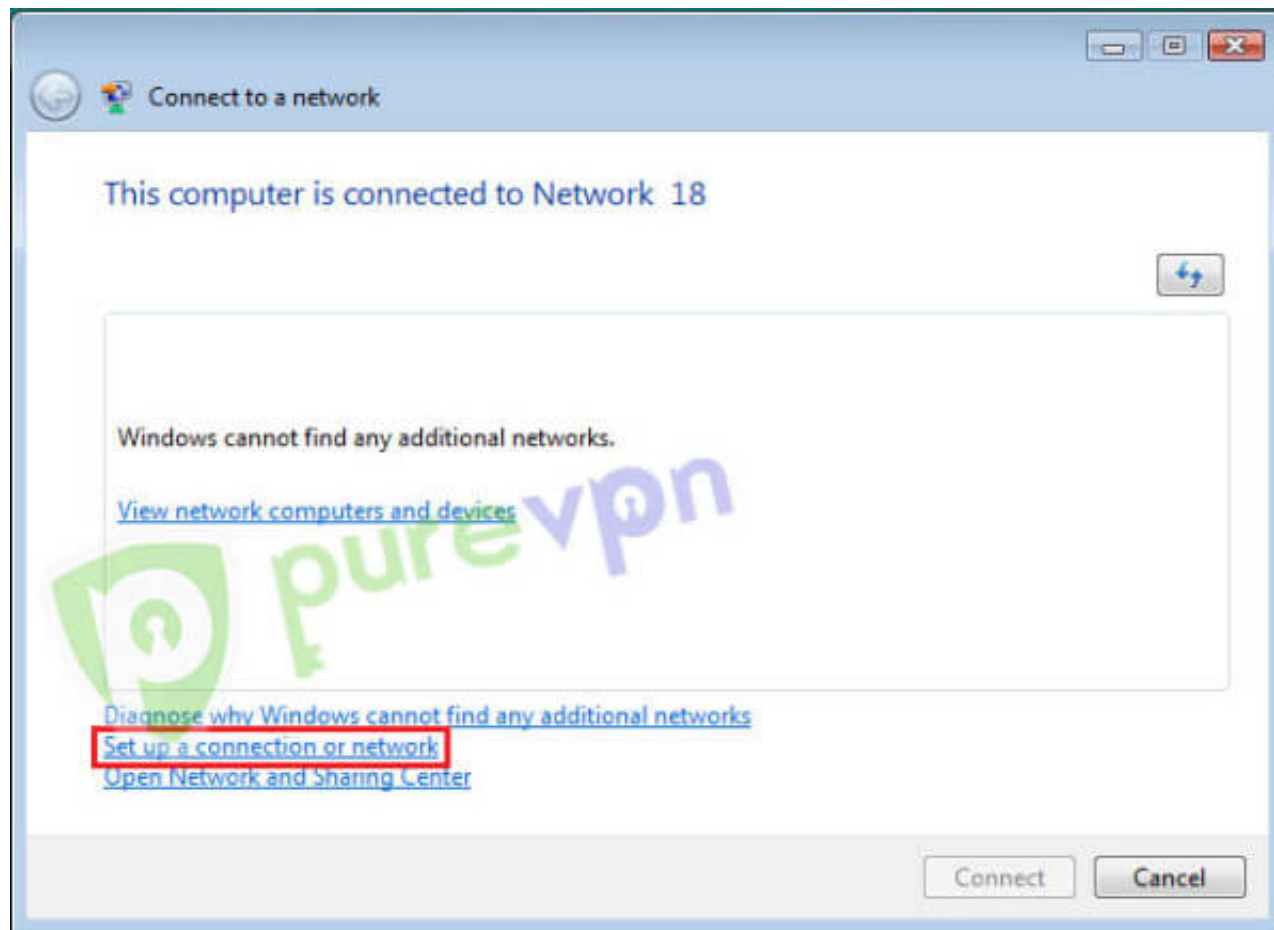
### Follow these simple steps to configure PureVPN on Windows Vista:

**Note:** We have just launched New PureVPN Windows Software BETA version. If you need guide on BETA version [Click Here](#).

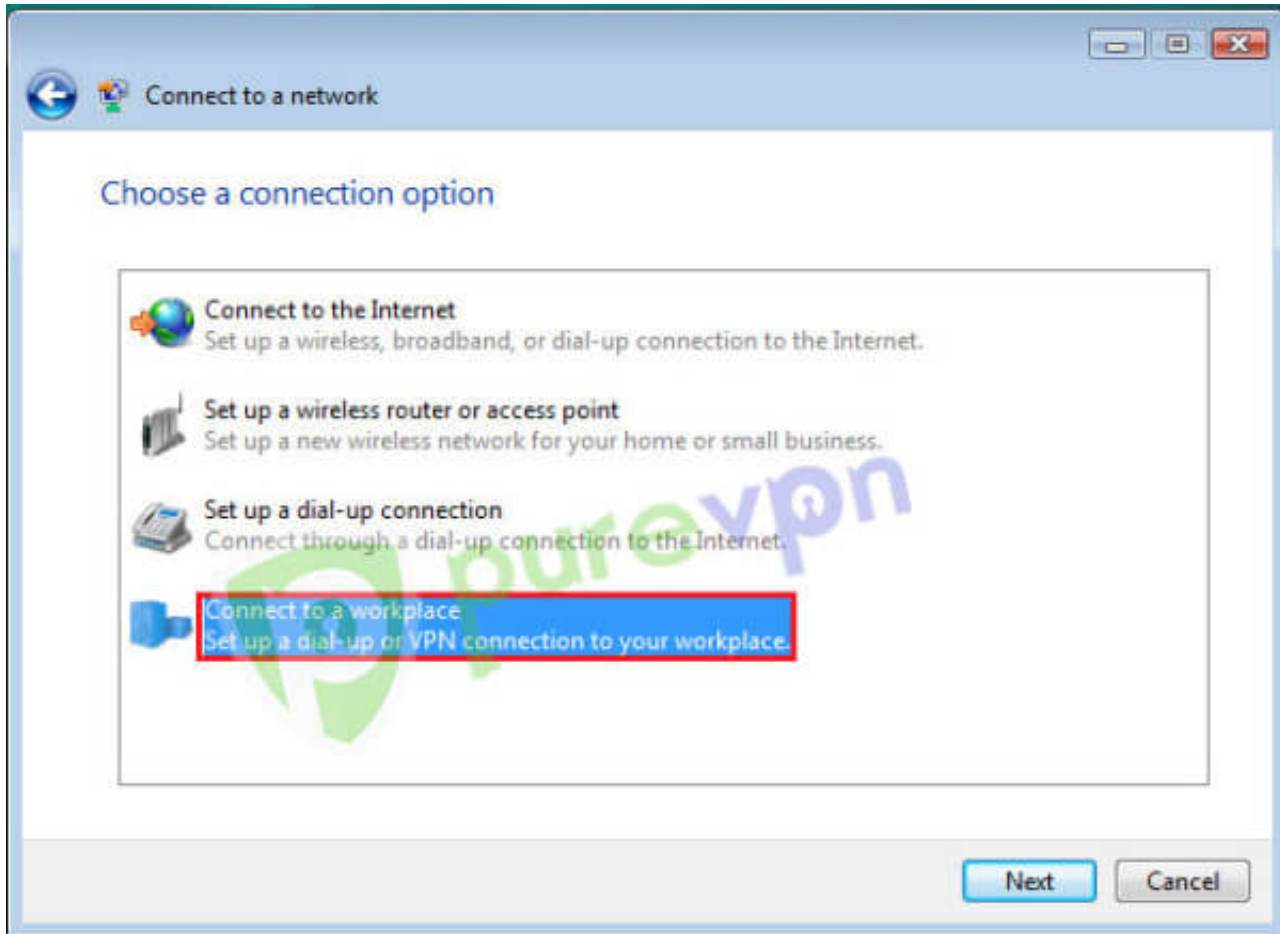
1 Click on **Start** and click on “**Connect To**”



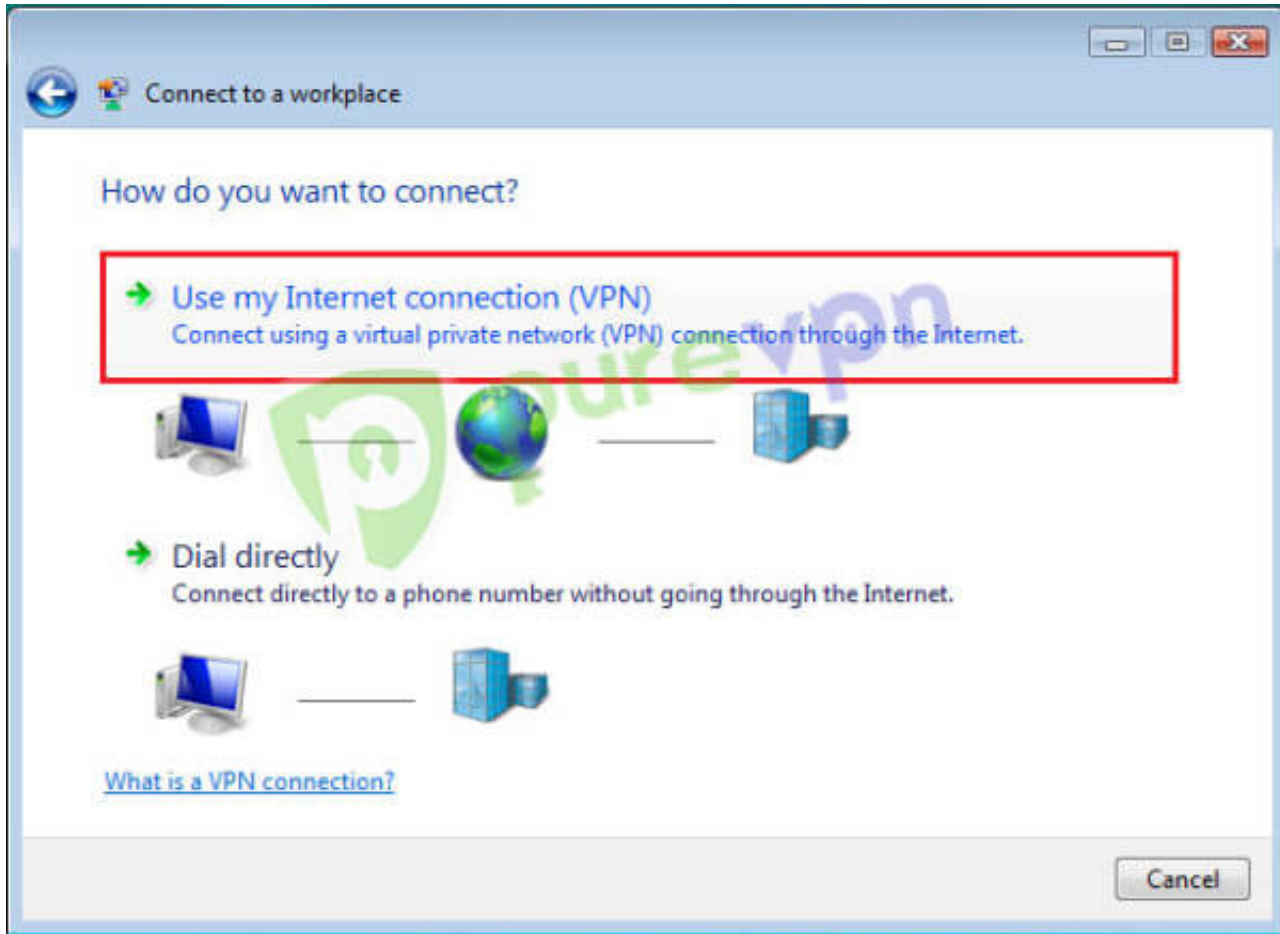
2 Click on “**Set up a connection or network**”



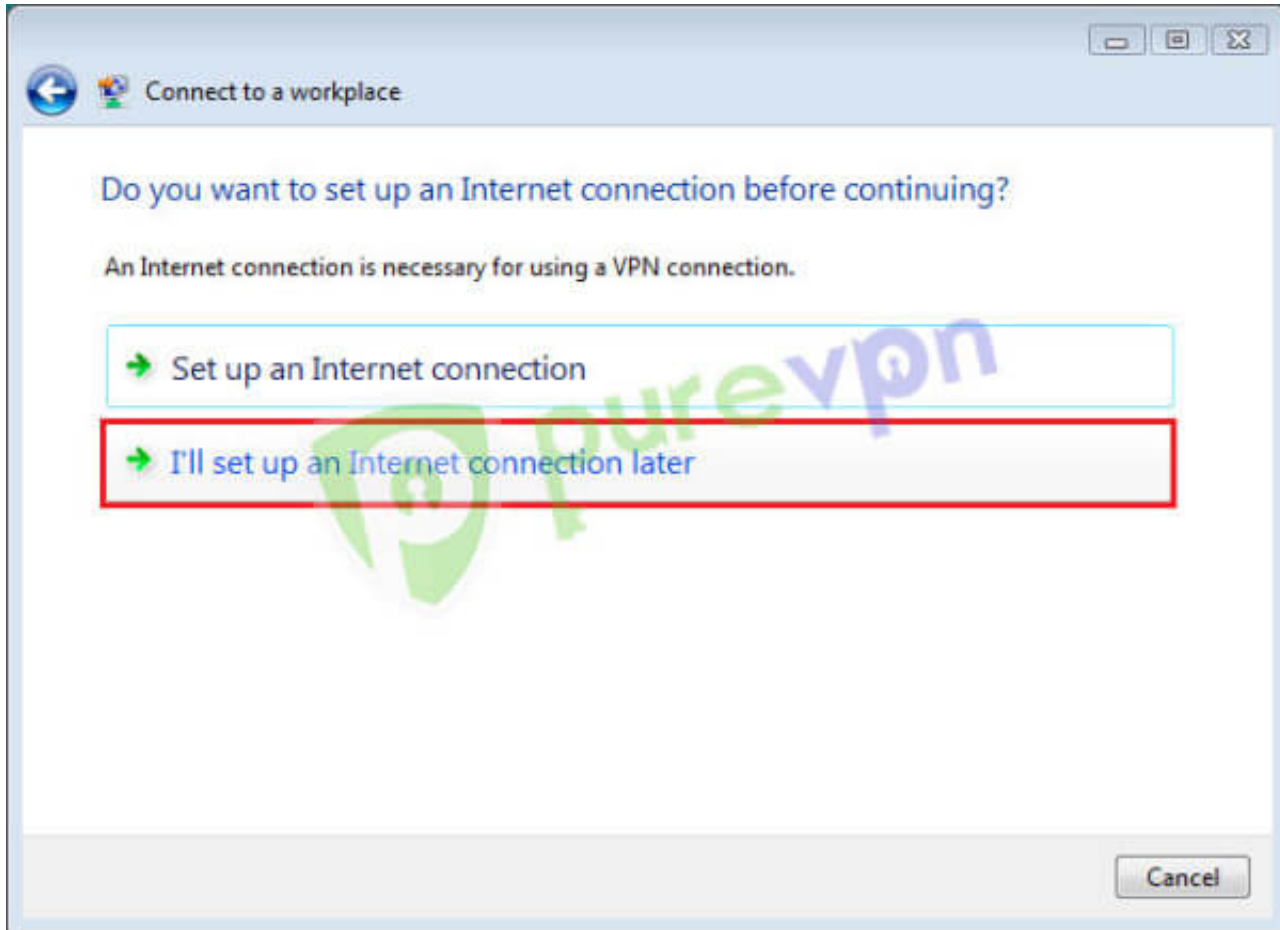
**3** Select **Connect to a workplace** and click **“Next”**



4 Click on **“Use my Internet connection (VPN)”**

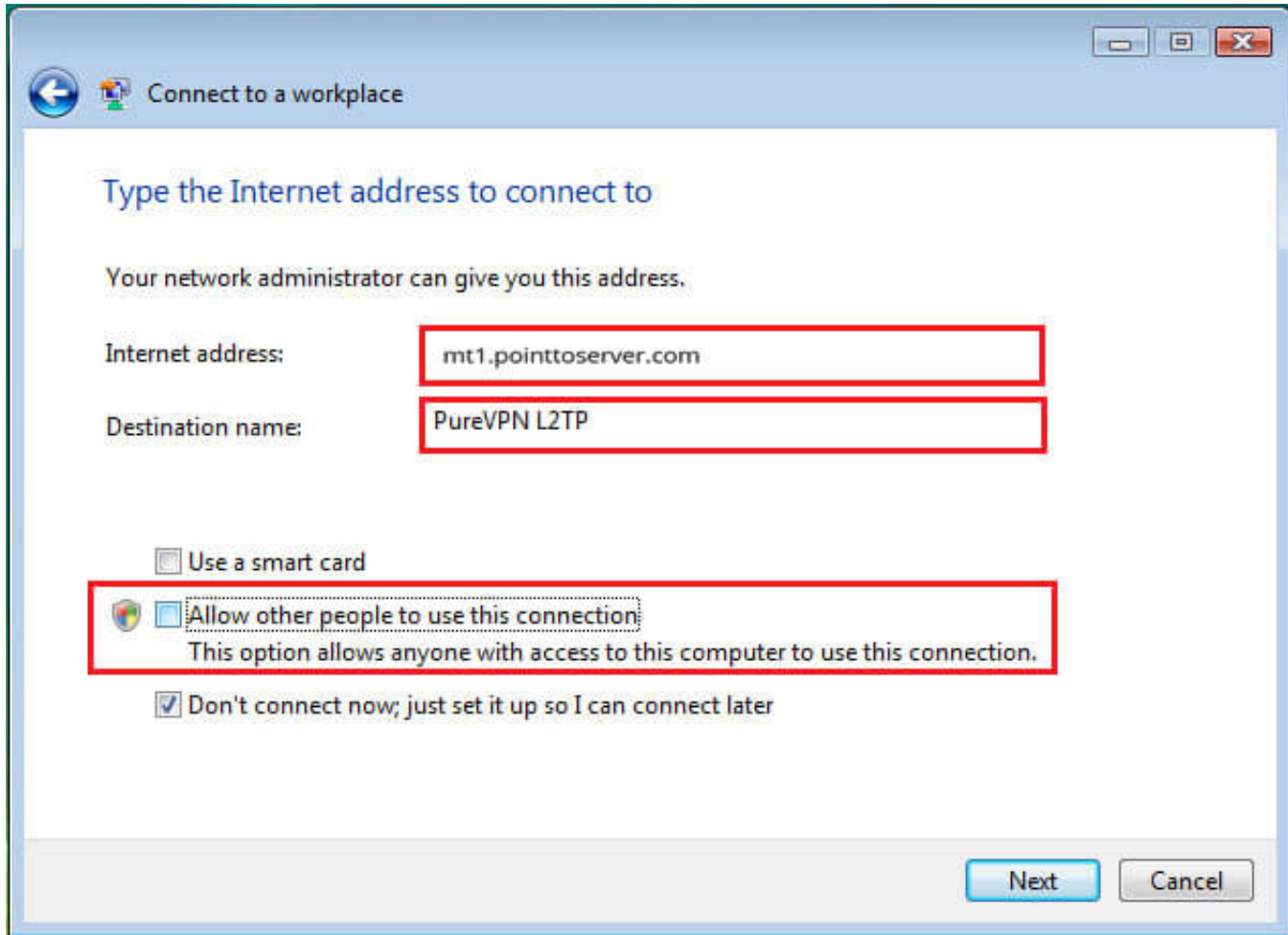


5 Click on "I'll set up an Internet connection later"

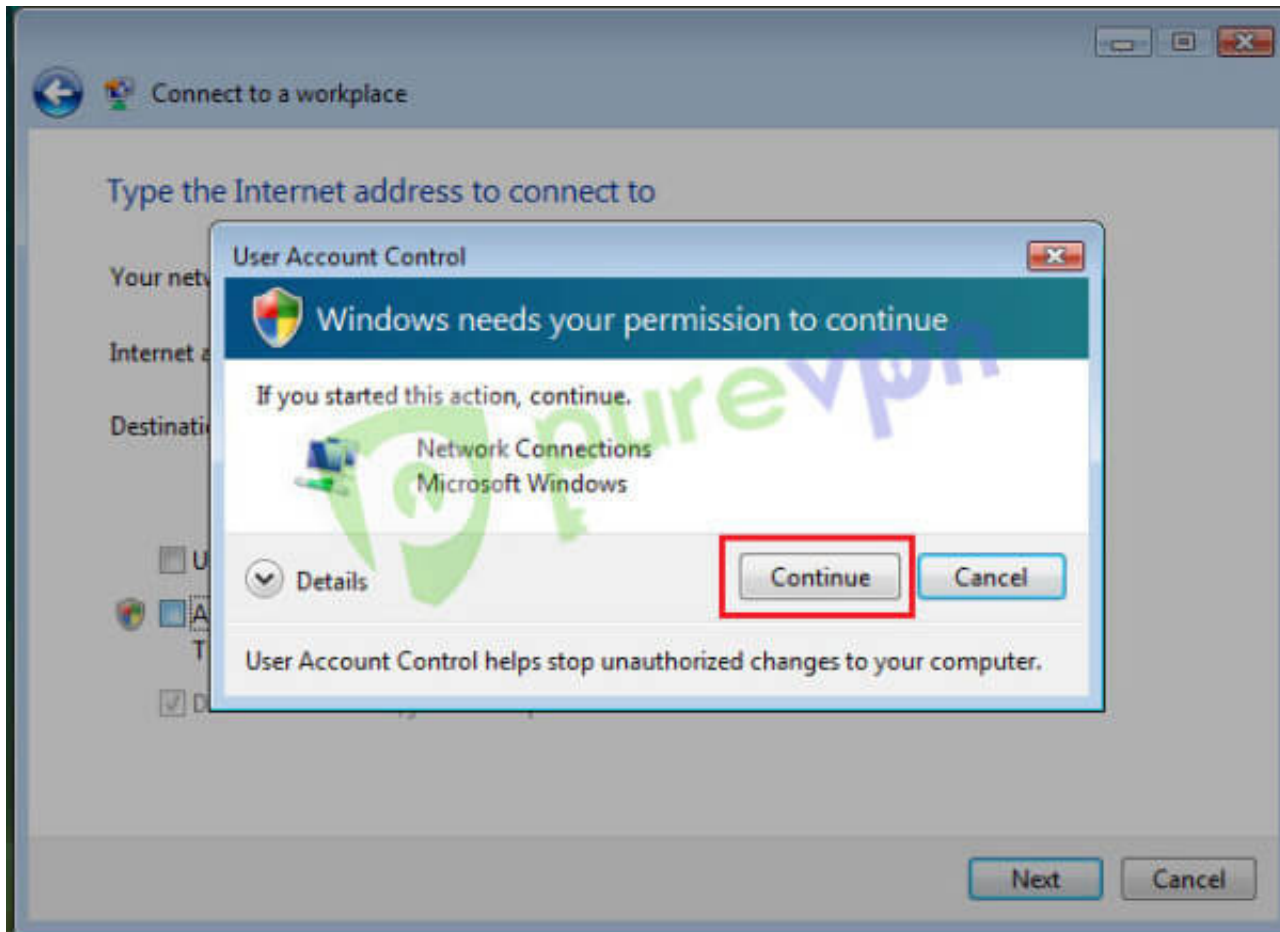


6 Insert the following info:

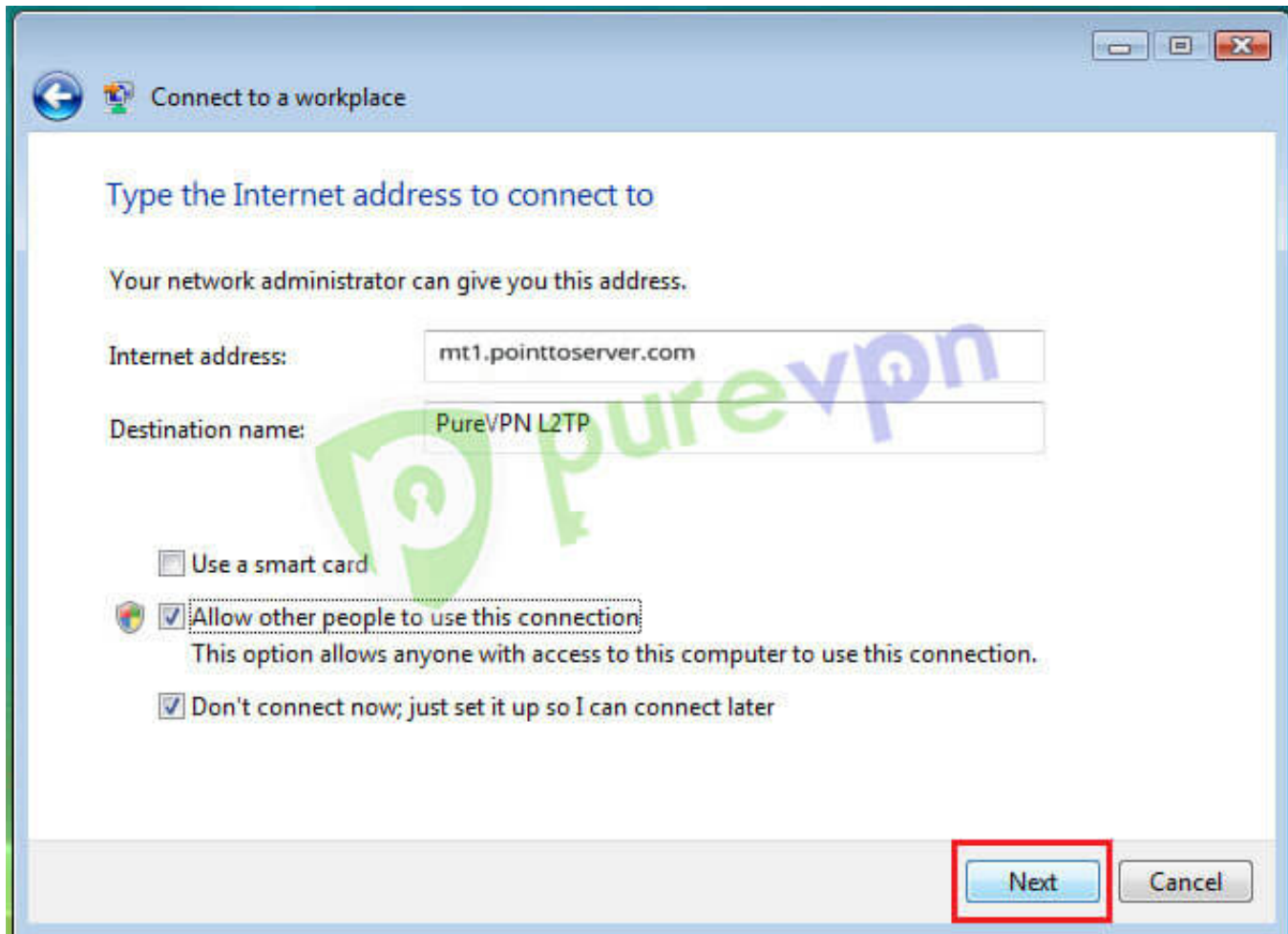
- Insert **desired server address** in **Internet Address box**. [Click here](#) to get the server list.
- Insert **PureVPN L2TP** or **PureVPN US** etc as **Destination name**
- Click on "**Allow other people to use this connection**"



7 Click on **Continue**



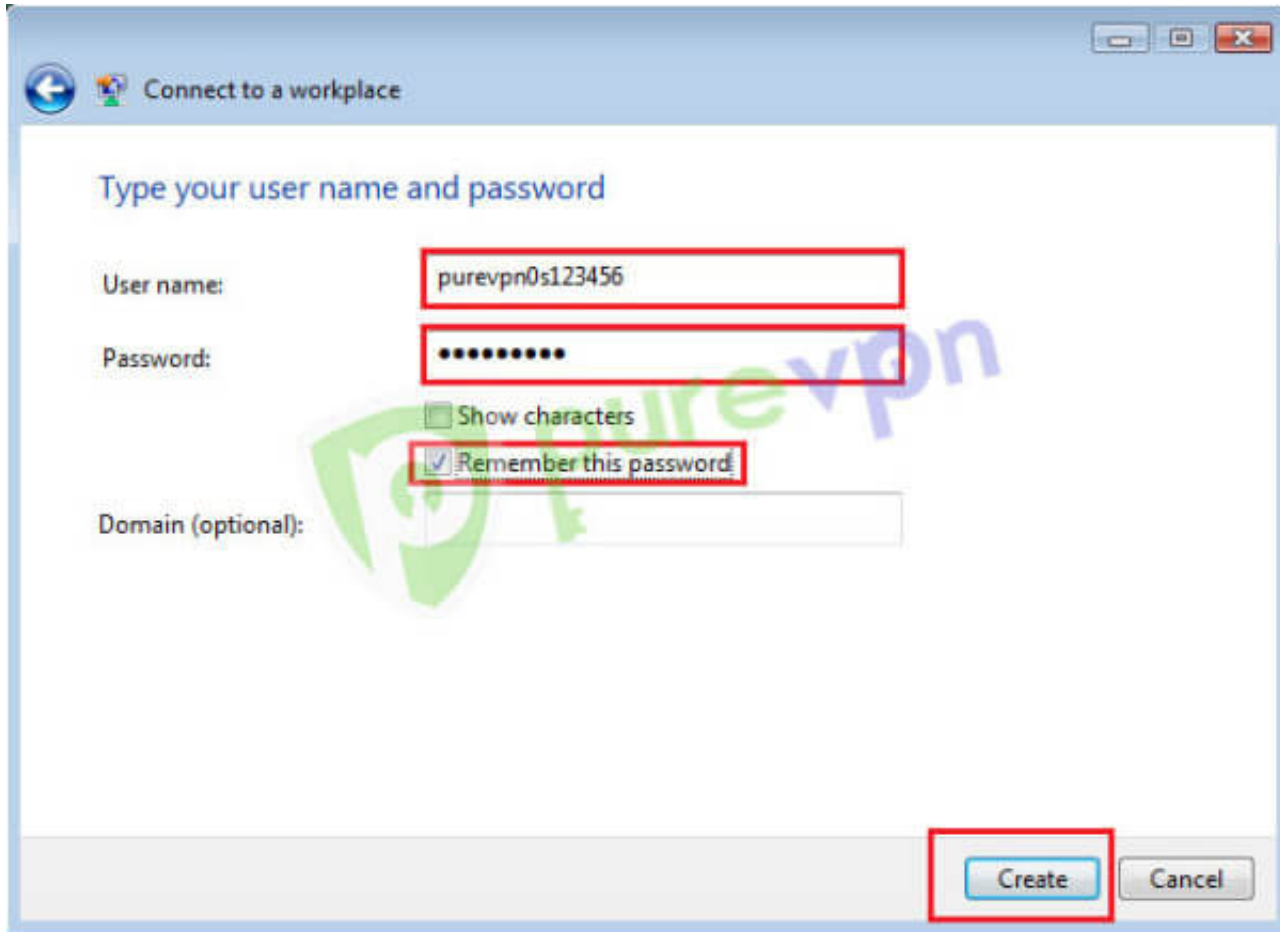
8 Select **“Don’t connect now; just set it up so I can connect later”** then Click **“Next”**



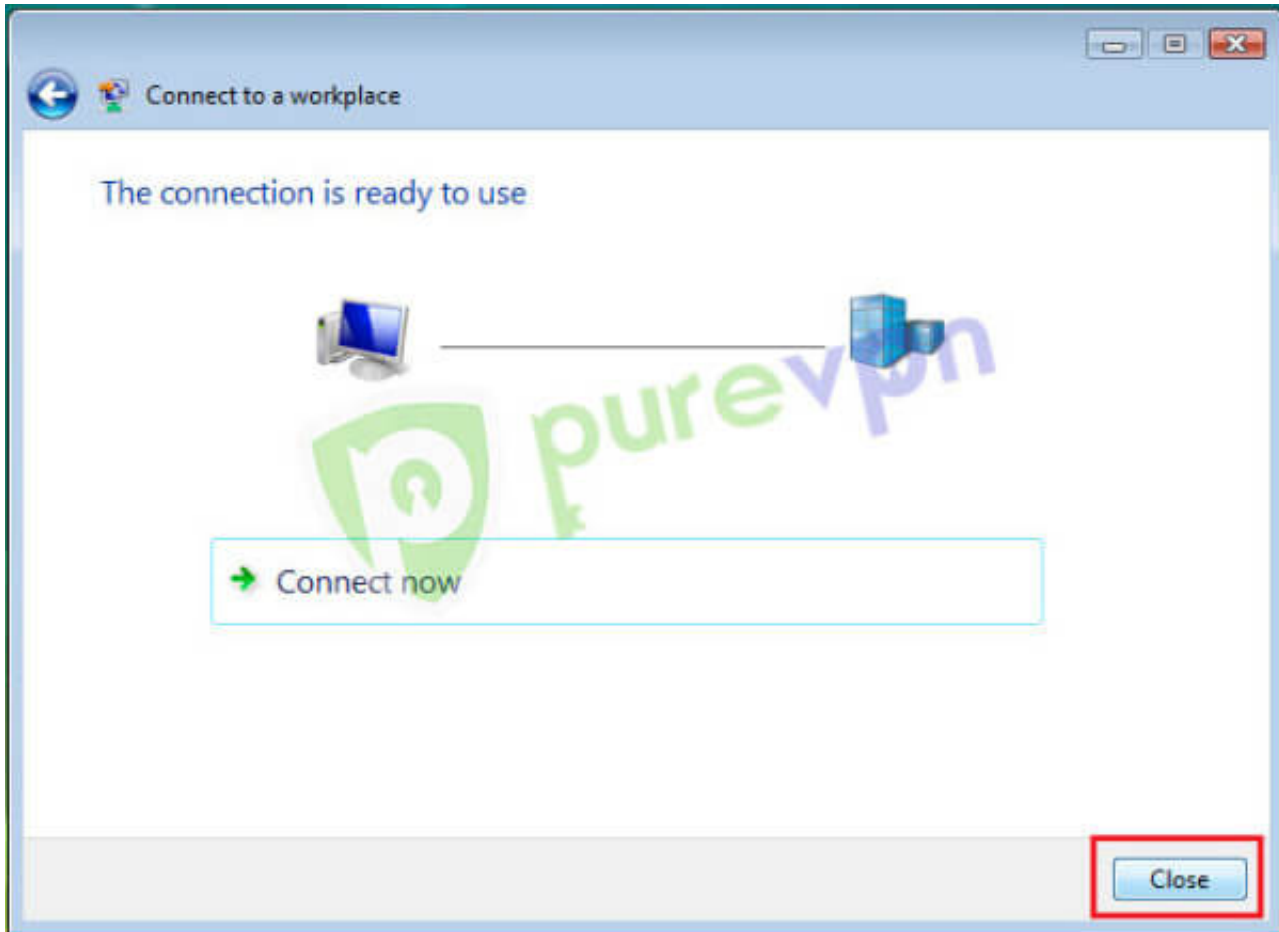
9 Insert the following info:

- Insert your **Username** and **Password** provided by **PureVPN**.
- Tick "**Remember this password**"
- Click on "**Create**"

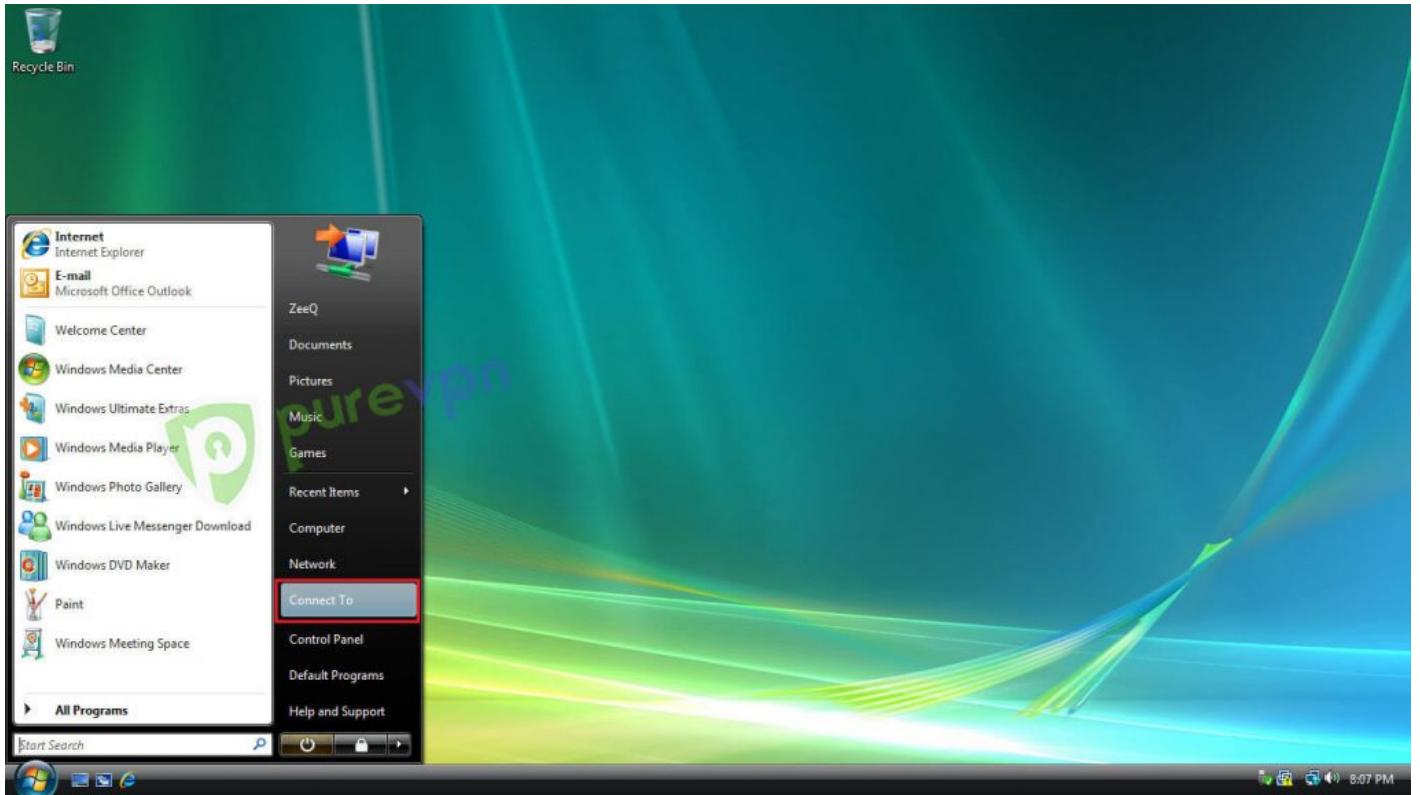




**10** Click on **“Close“**



11 Click on **Start** and click on **Connect To**



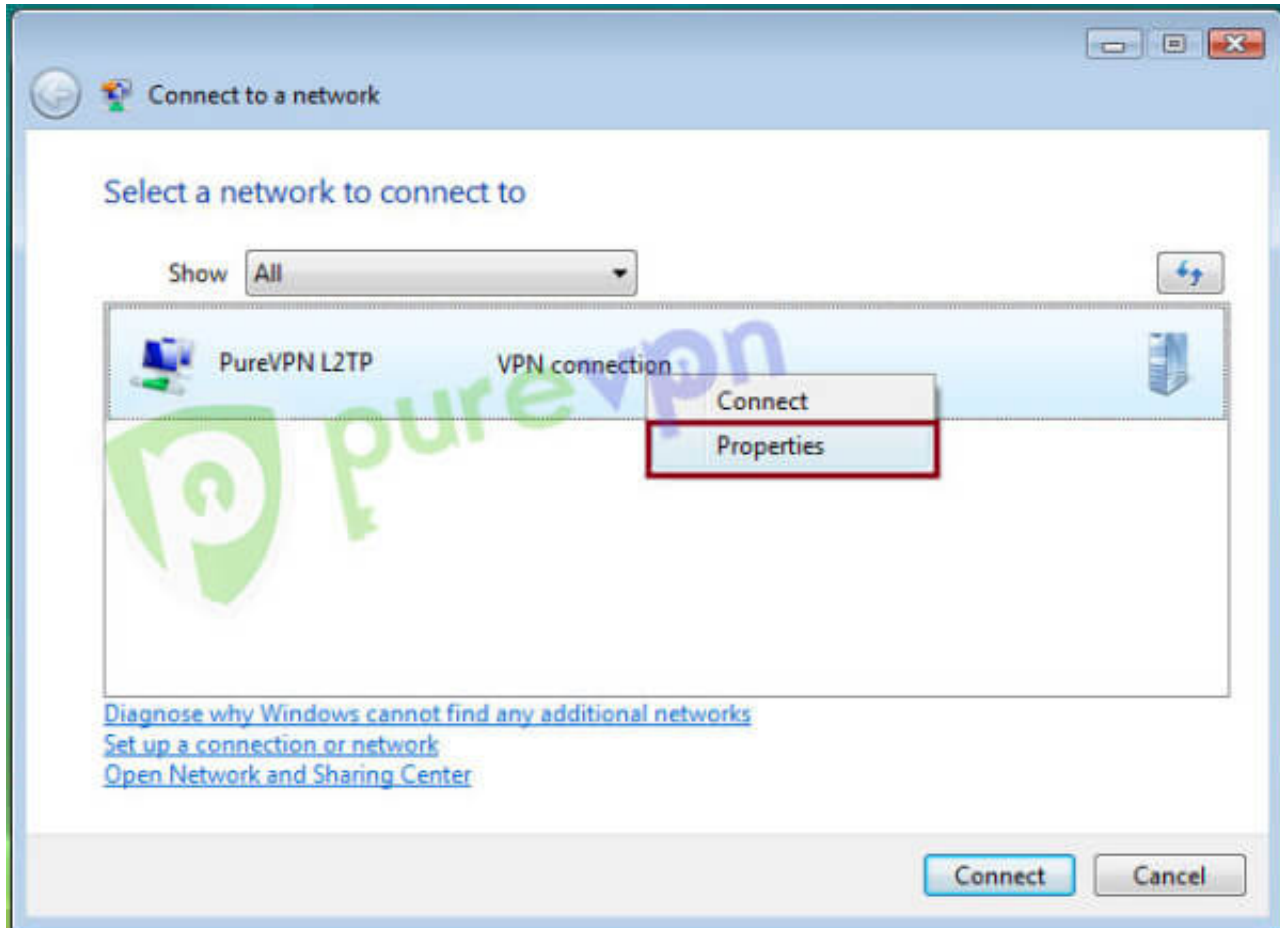
12 Right click on **PureVPN L2TP** connection and select “**Properties**”

## PureVPN Support

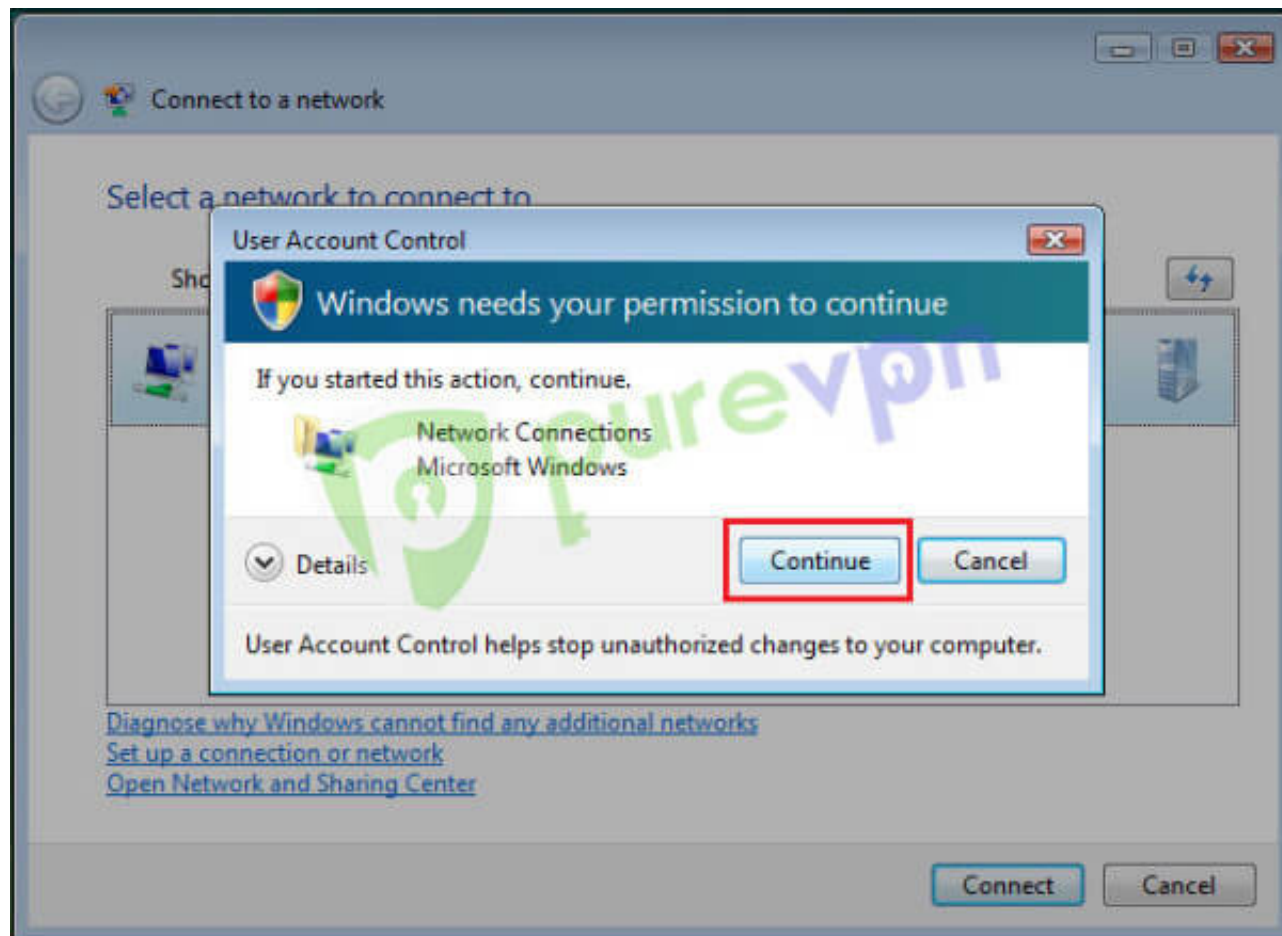
Solution of Your Problems

<https://support.purevpn.com>

---

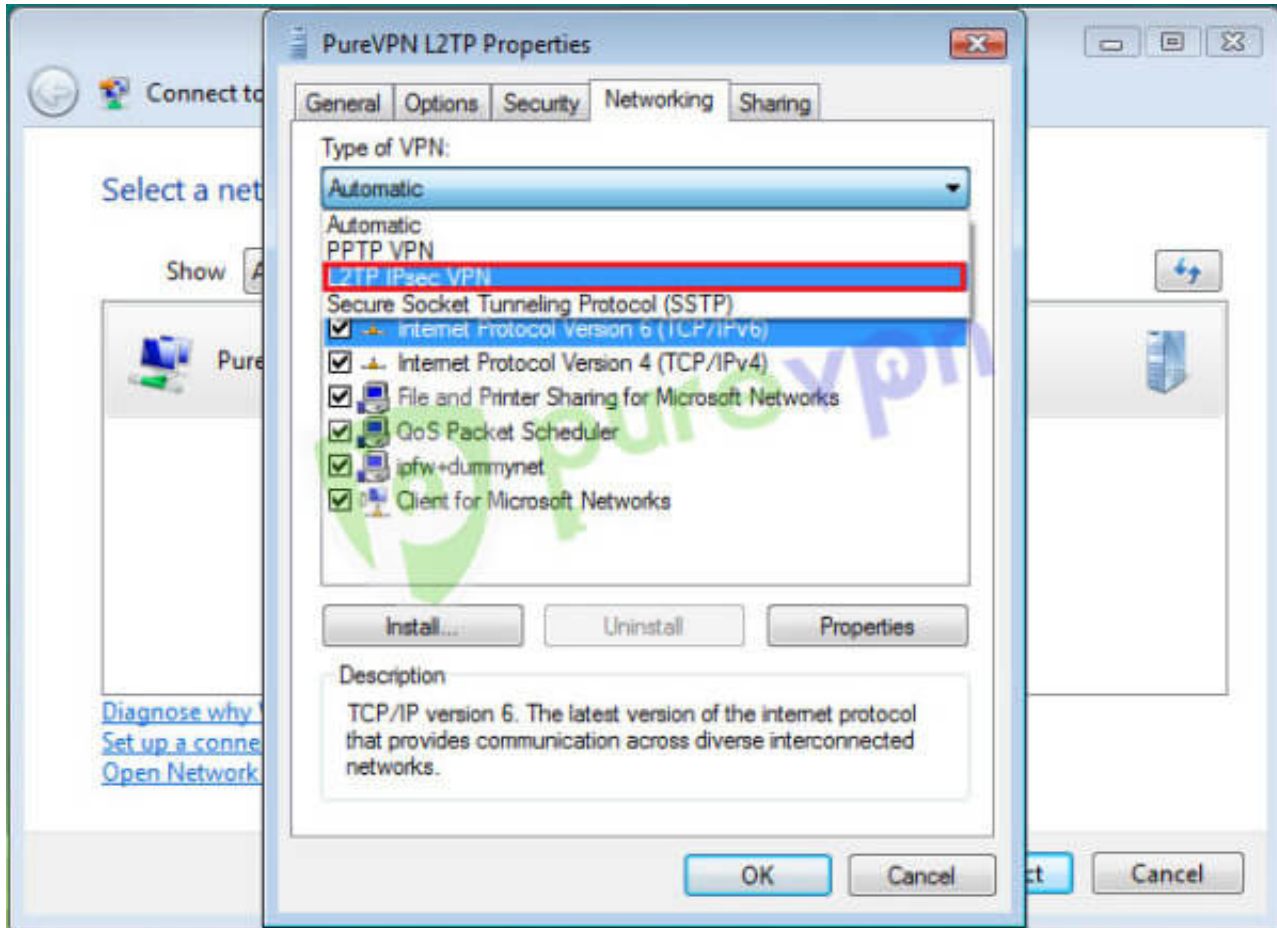


13 Click on “Continue”



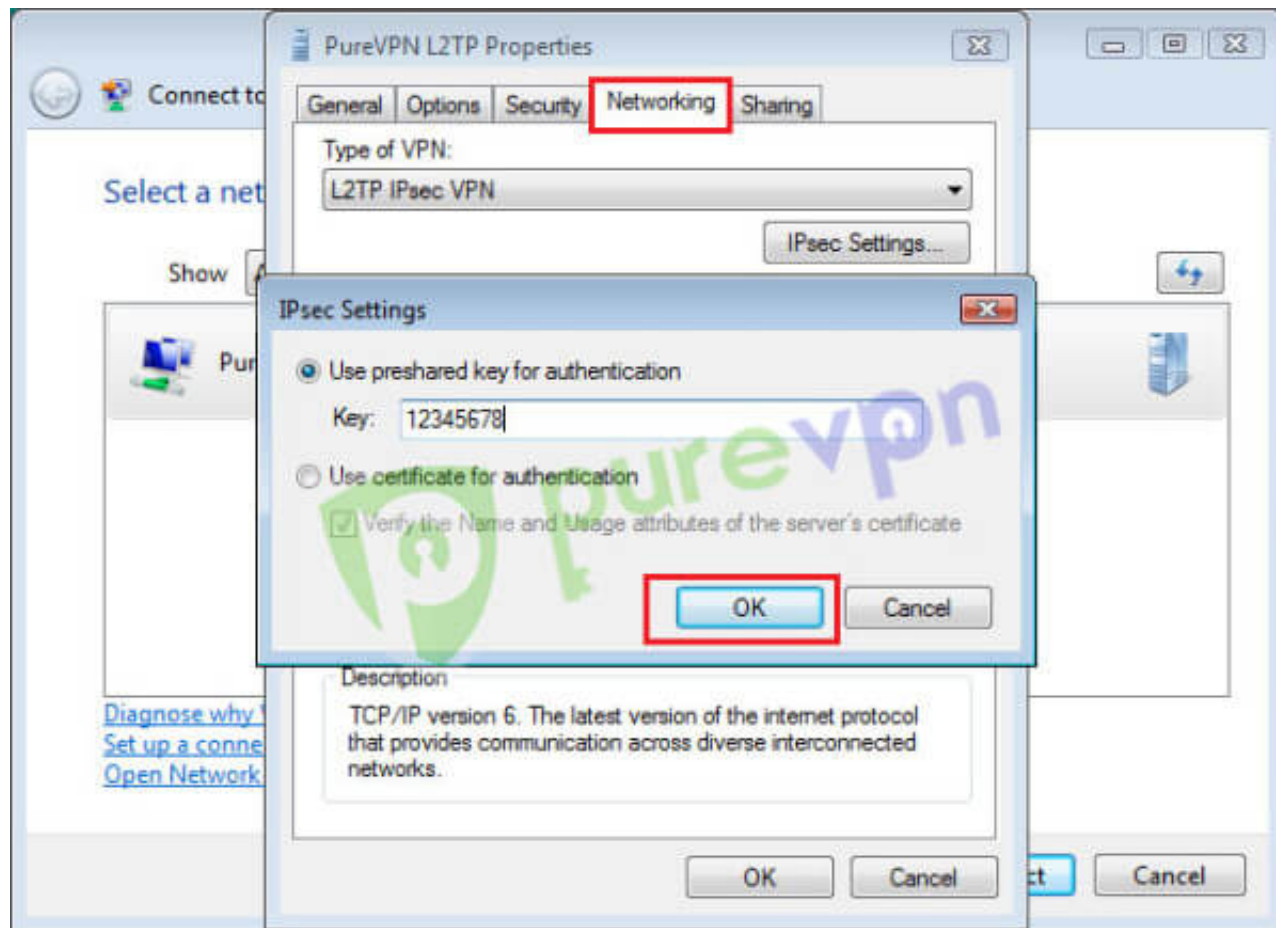
14 Insert the following info:

- Click on "**Networking**" tab
- Select "**L2TP IPsec VPN**" from drop down menu



15 Insert the following info:

- Click on “**IPsec settings**”
- Select “**Use Preshared Key for Authentication**” and insert “**12345678**” in Key box.
- Click on “**OK**”



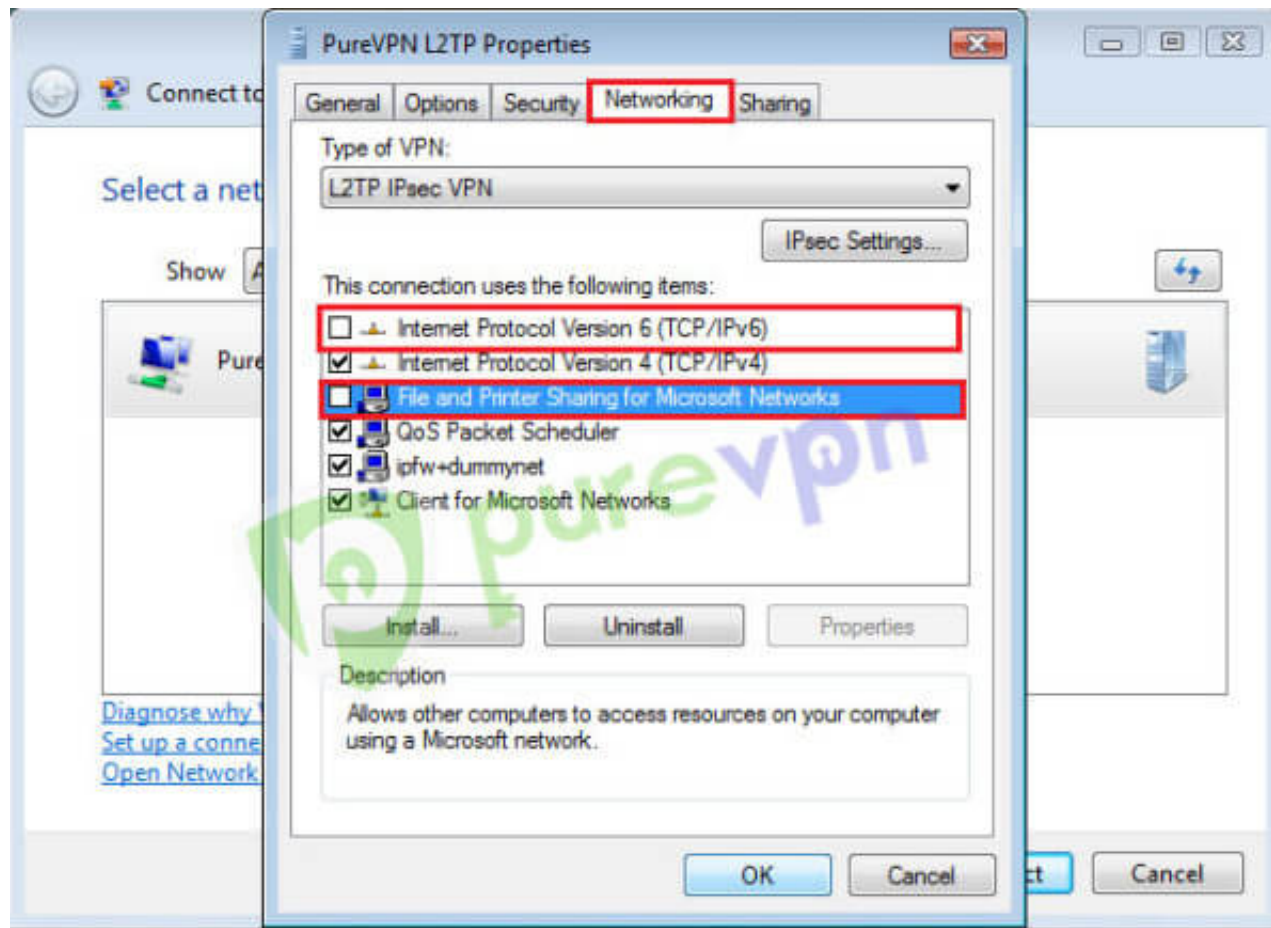
16 Insert the following info:

- Uncheck **“Internet Protocol Version 6 (TCP/IPv6)”** and **“File and Printer Sharing for Microsoft”**
- Click on **“OK”**

## PureVPN Support

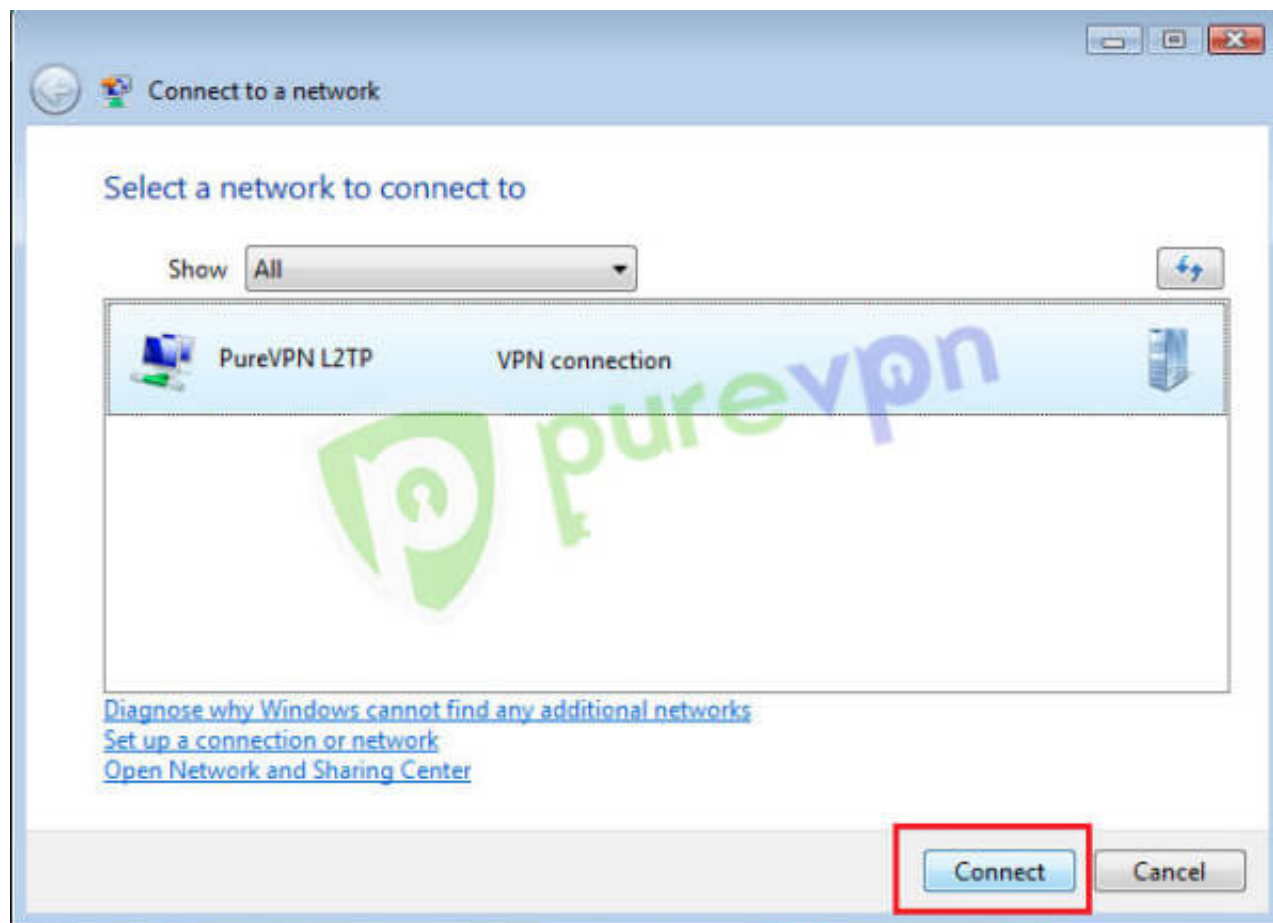
Solution of Your Problems

<https://support.purevpn.com>

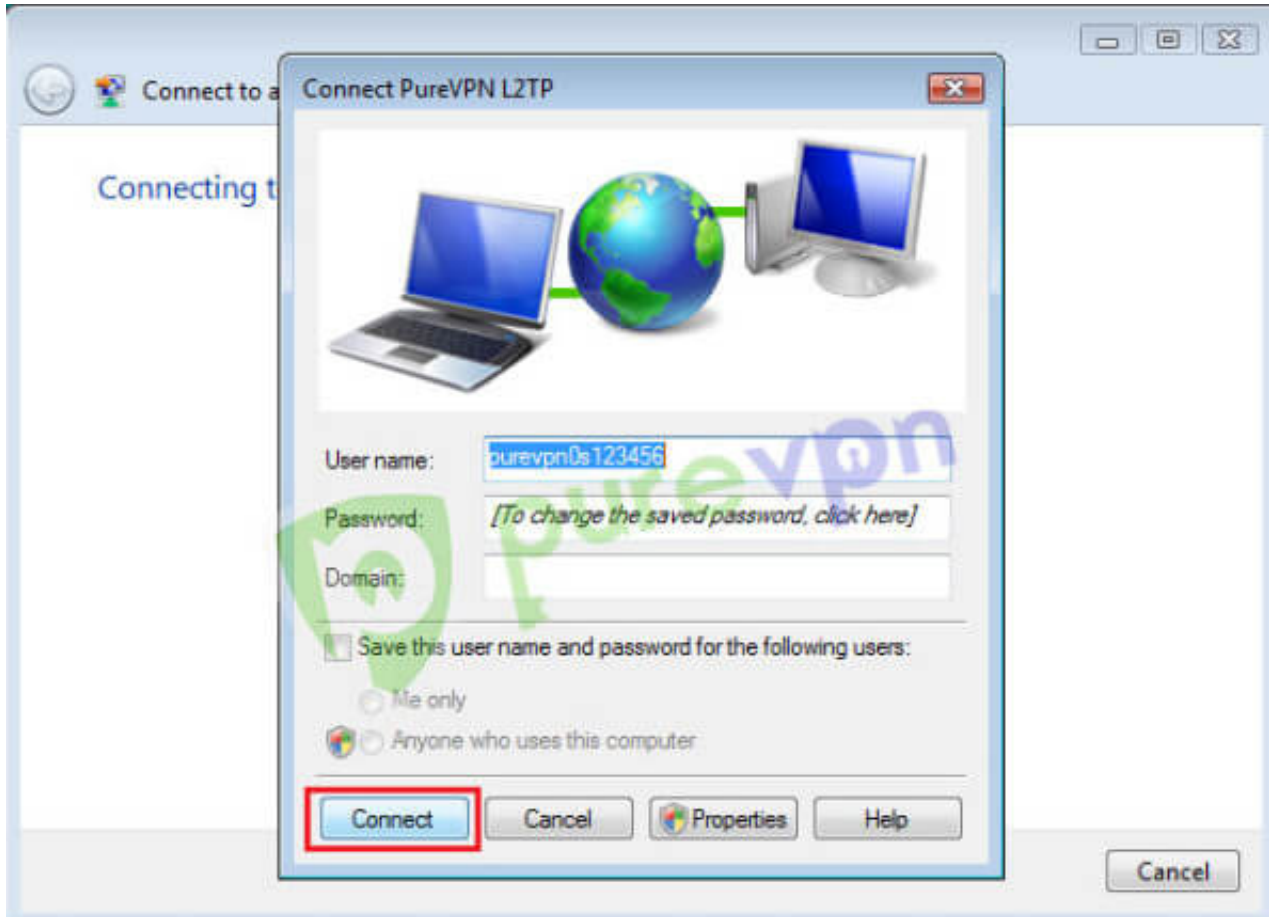


17 Click on "Connect"

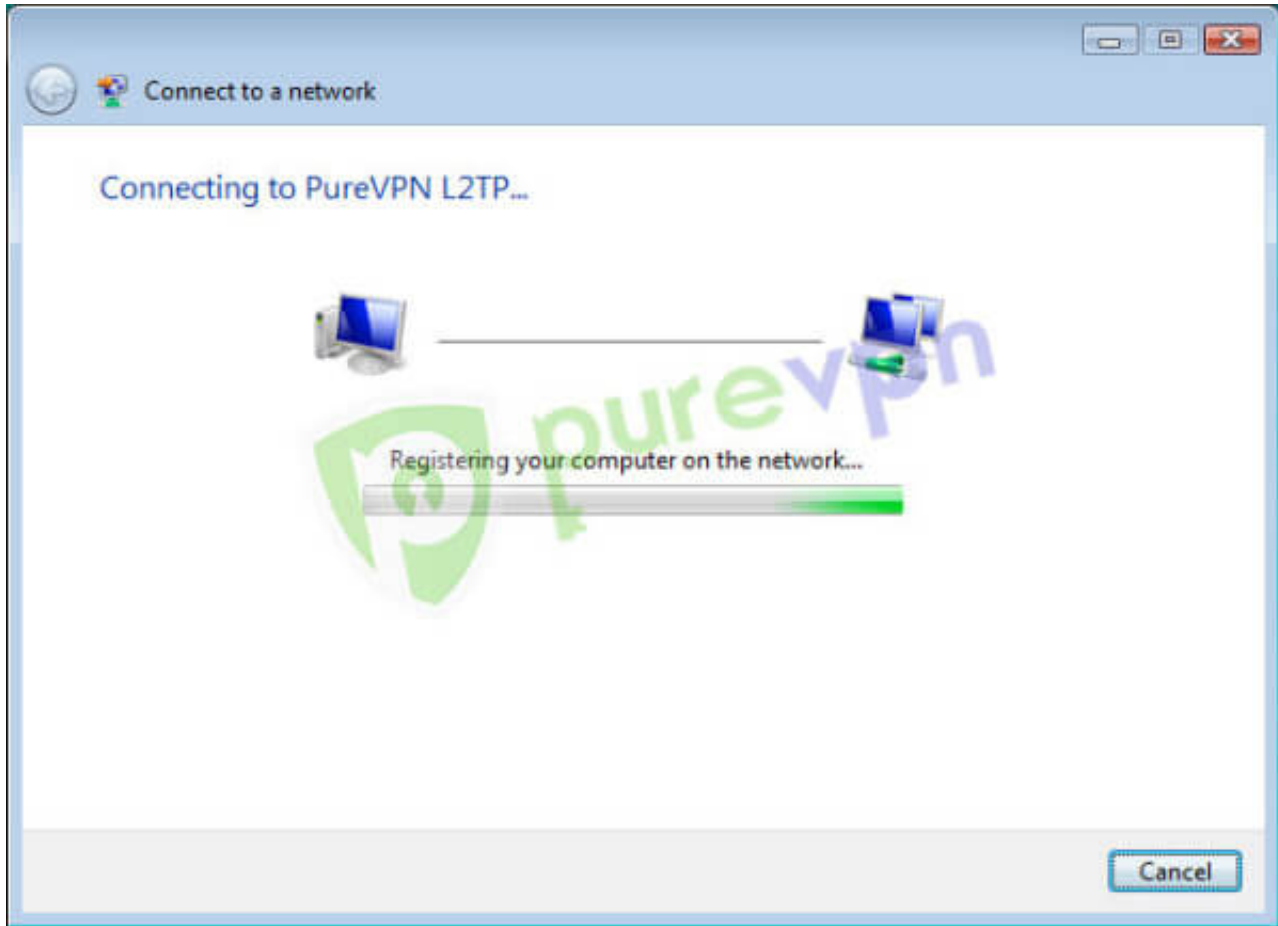




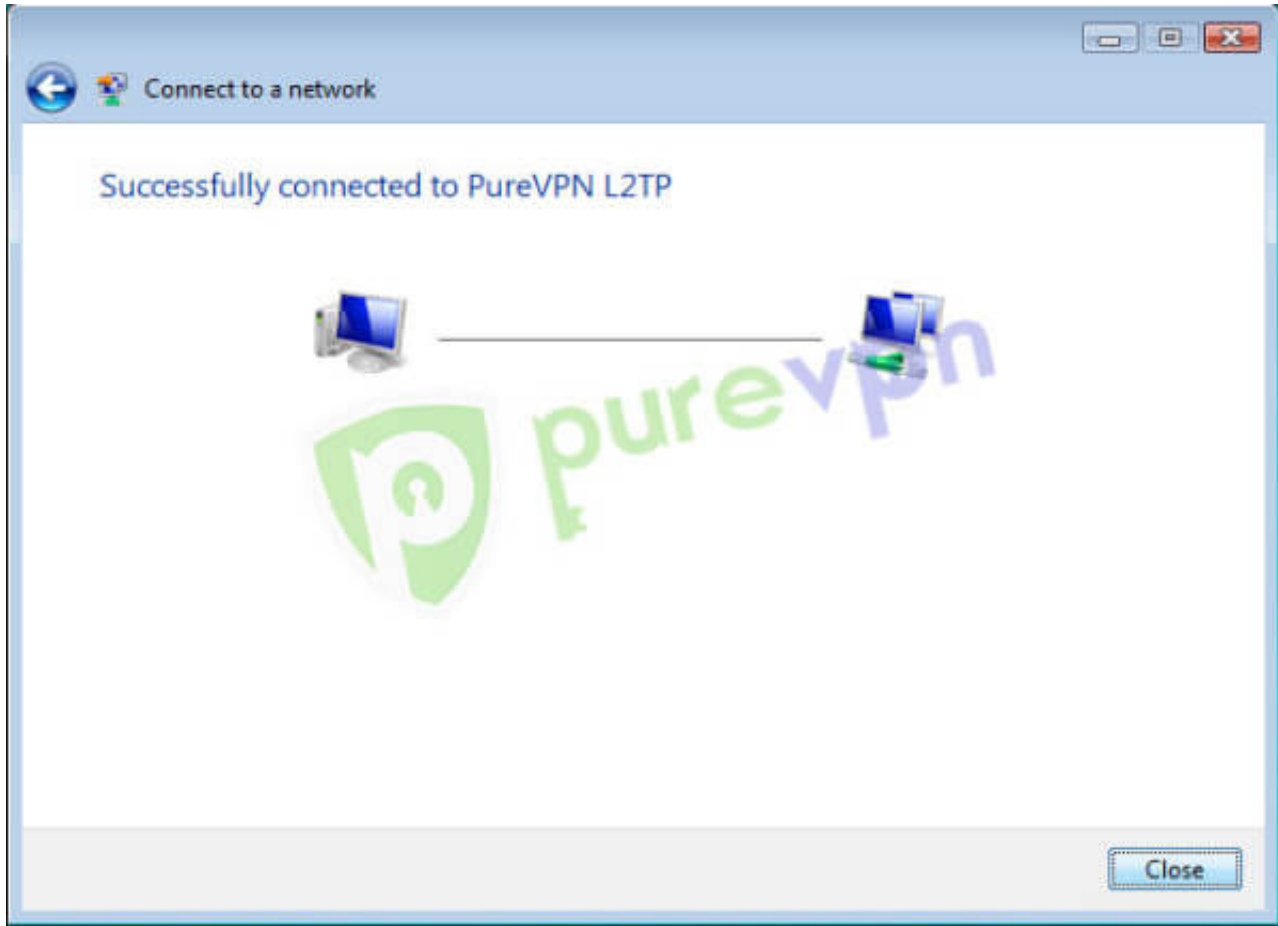
**18** Click on “**Connect**” again



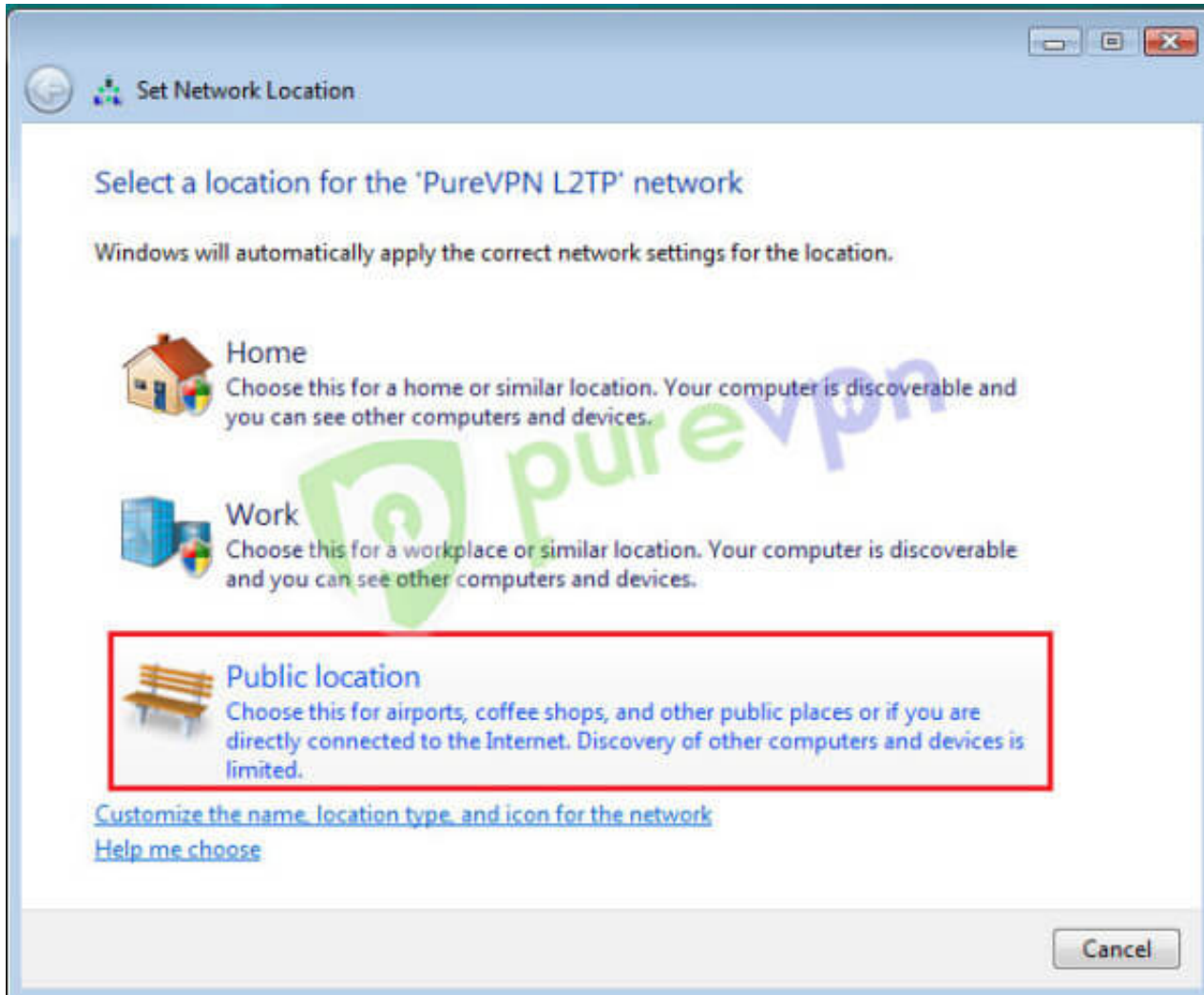
19 VPN will establish after account verification



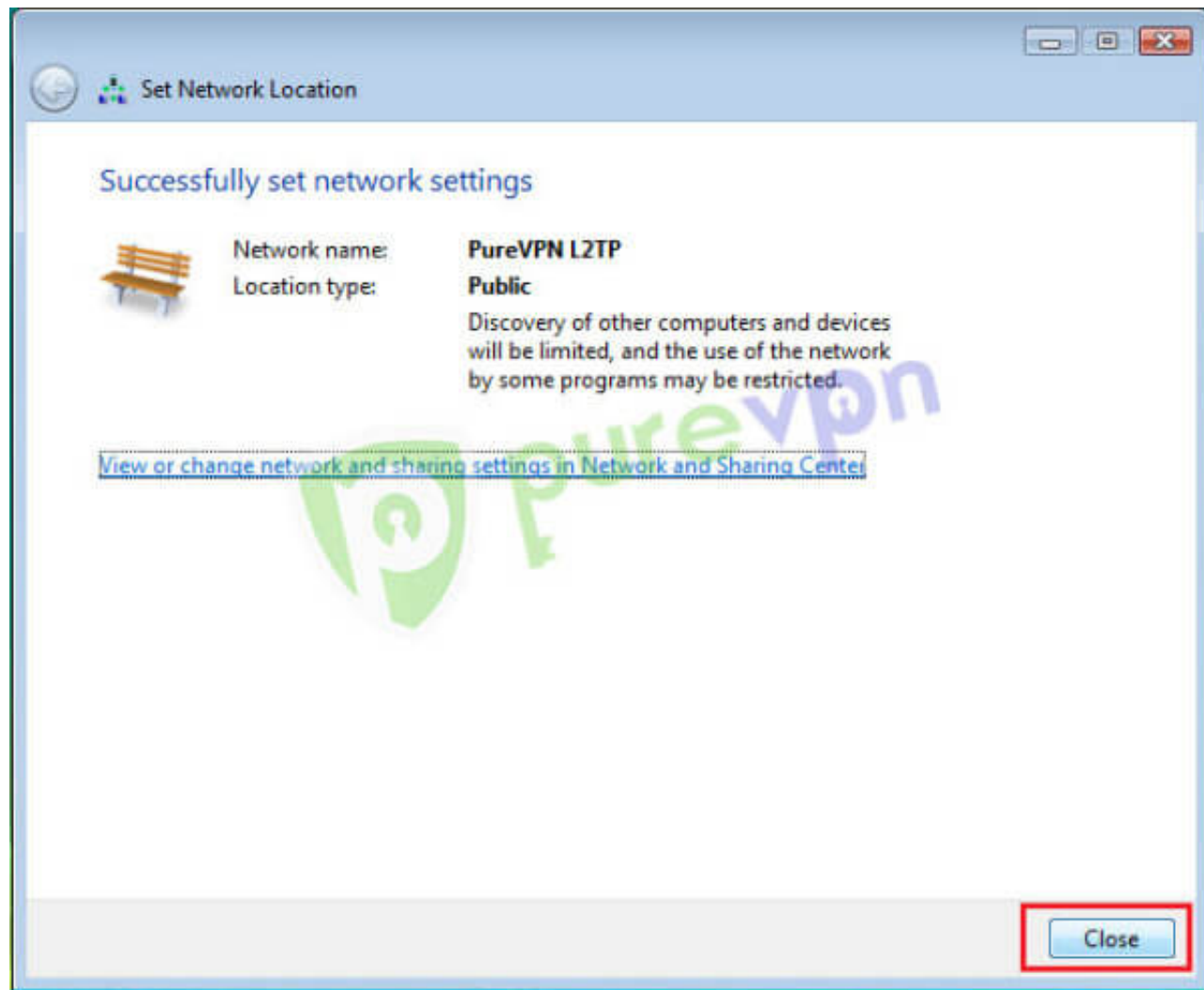
**20** VPN is successfully connected



21 Select Network as **“Public”**



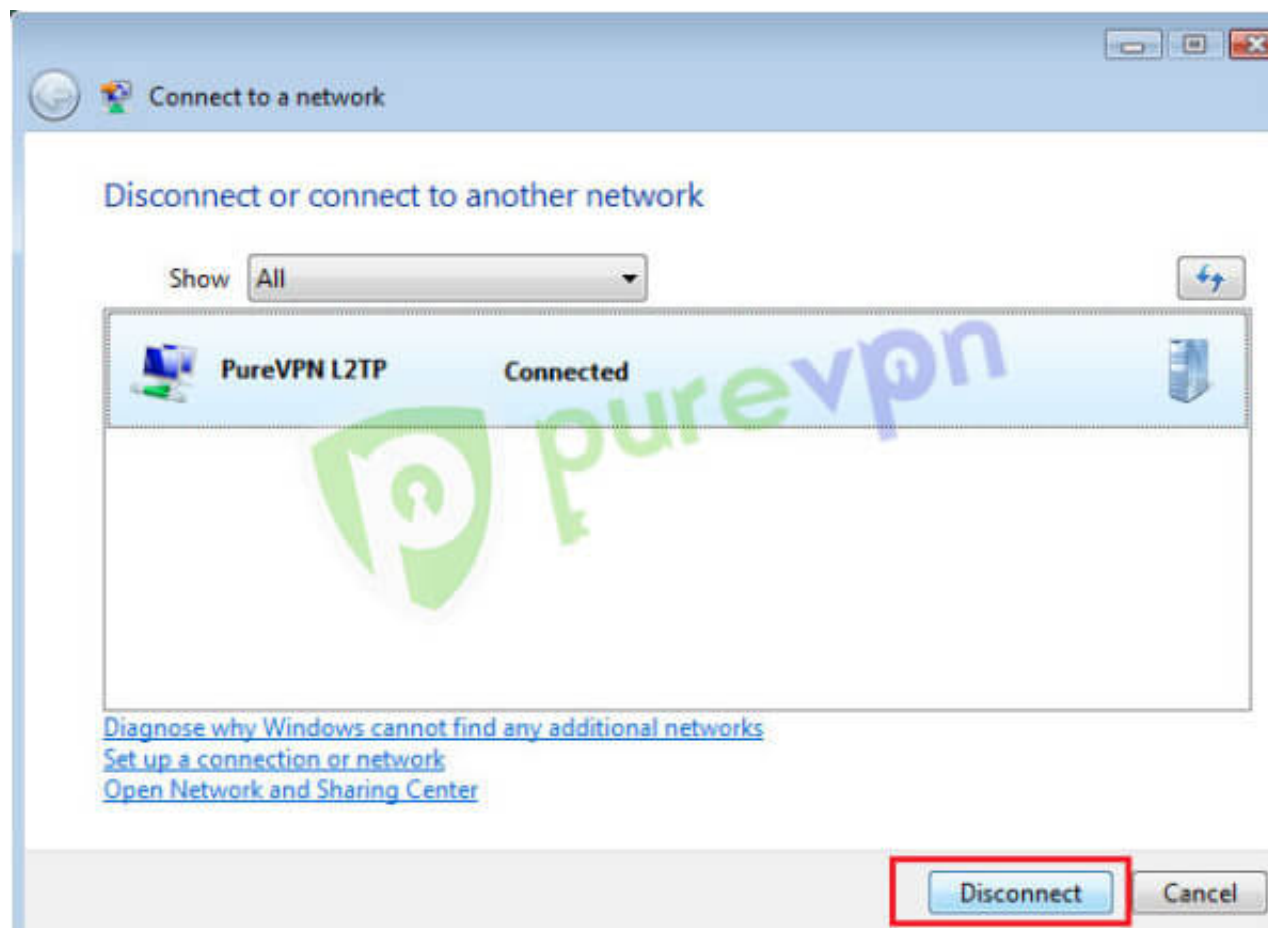
**22** Click on Close and **Enjoy the Freedom!!!!!!!**



**23** To disconnect VPN. Click on **Lan / Wifi icon** from system tray and click on **“Connect or Disconnect”**



**24** Click on “**Disconnect**”



## Having Trouble Connecting?

If you're still unable to connect, then please check the most common errors and their solutions

### **Error 868**

[Solution](#)

### **Error 800, 806, 807, 809**

[Solution](#)

### **Error 720**

[Solution](#)

### **Error 691**

[Solution](#)



## **Error 647**

### [Solution](#)

Please use the **comment box** for your suggestions & feedback. For additional help, please submit [support ticket](#) with errors and screen shots (if possible) or contact our 24/7 live chat.