

## How to Setup PureVPN Manually on Windows XP (L2TP) ?

### Things to Consider:

Before you begin, please make sure that:

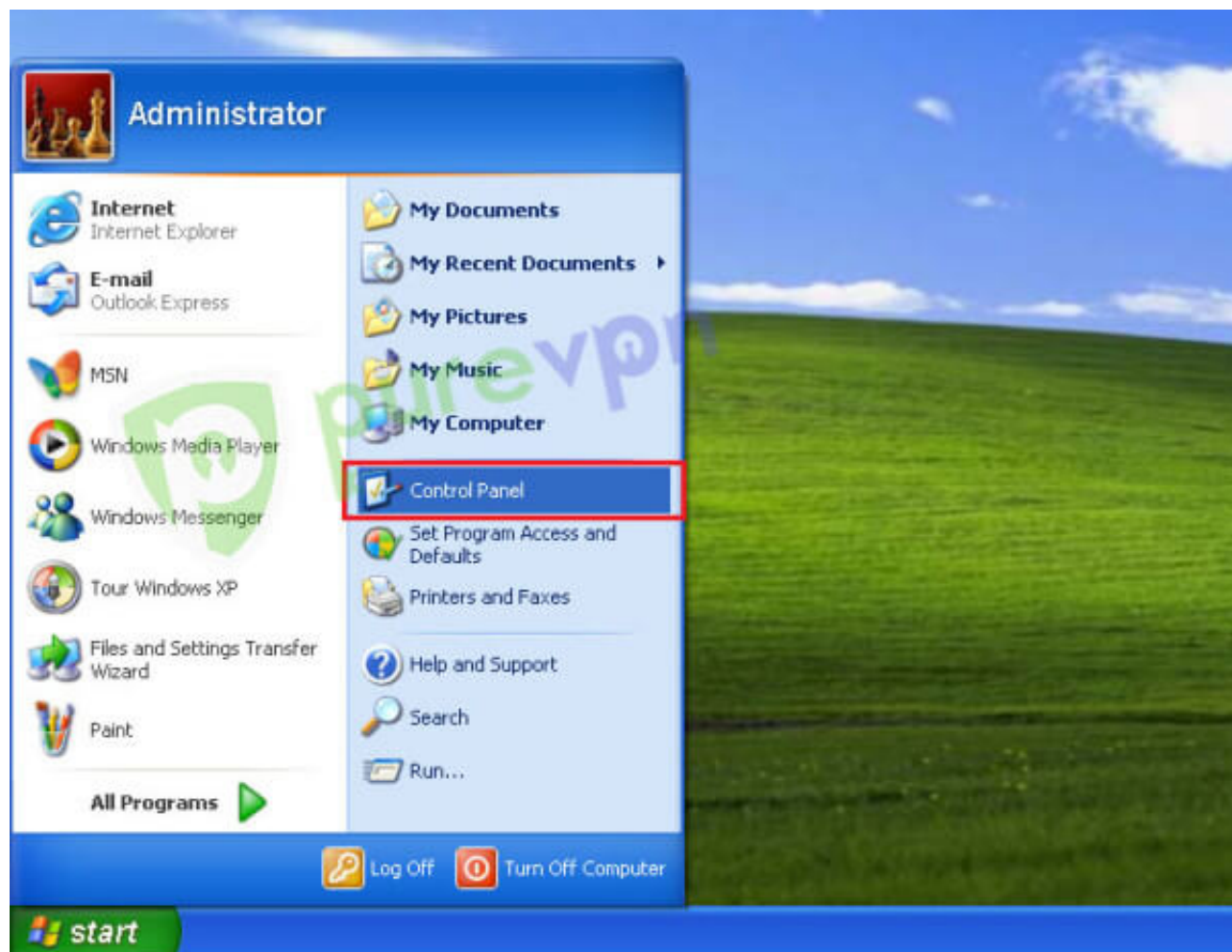
- You have a working internet connection
- Windows Supported Device.
- A Premium PureVPN account (If you haven't bought yet [click here](#) to buy)

You can watch the following video for Step by Step Configuration of PureVPN on Windows XP L2TP.

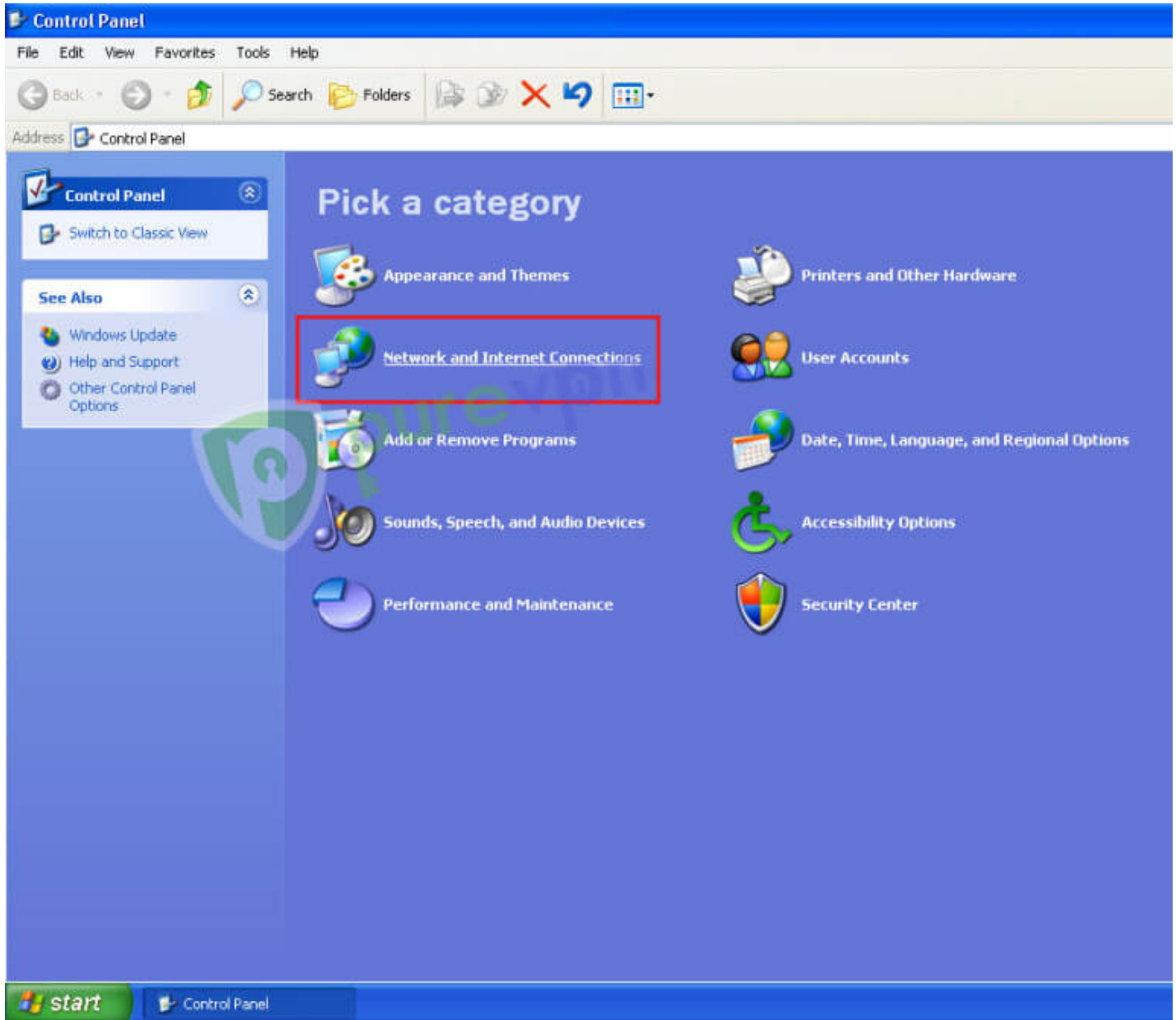
You can also follow the below given tutorial of **PureVPN manual configuration on Windows XP L2TP**.

Note: We have just launched New PureVPN Windows Software BETA version. If you need guide on BETA version [Click Here](#).

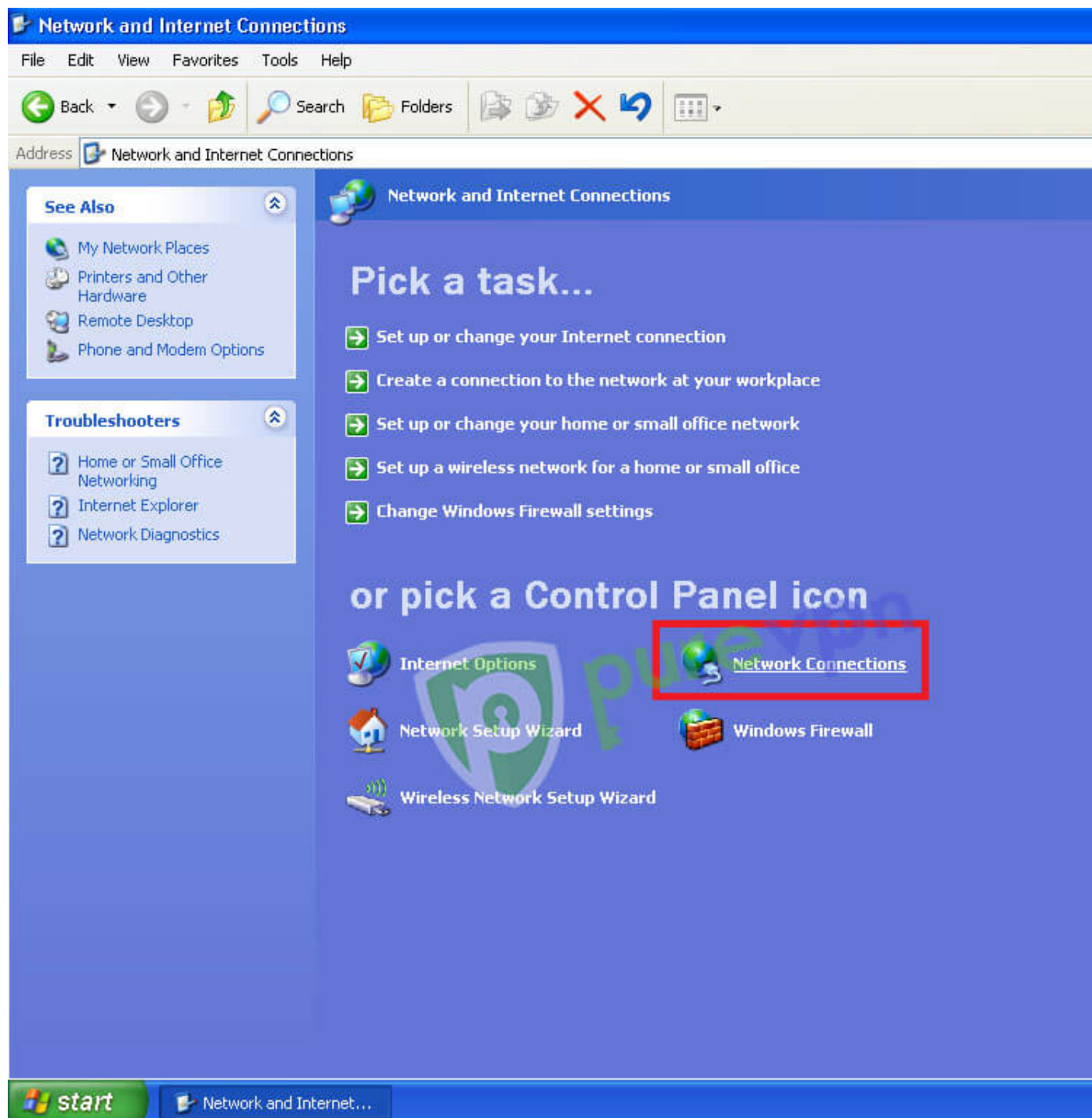
**1** Click on “**Start**” and go to “**Control Panel**”



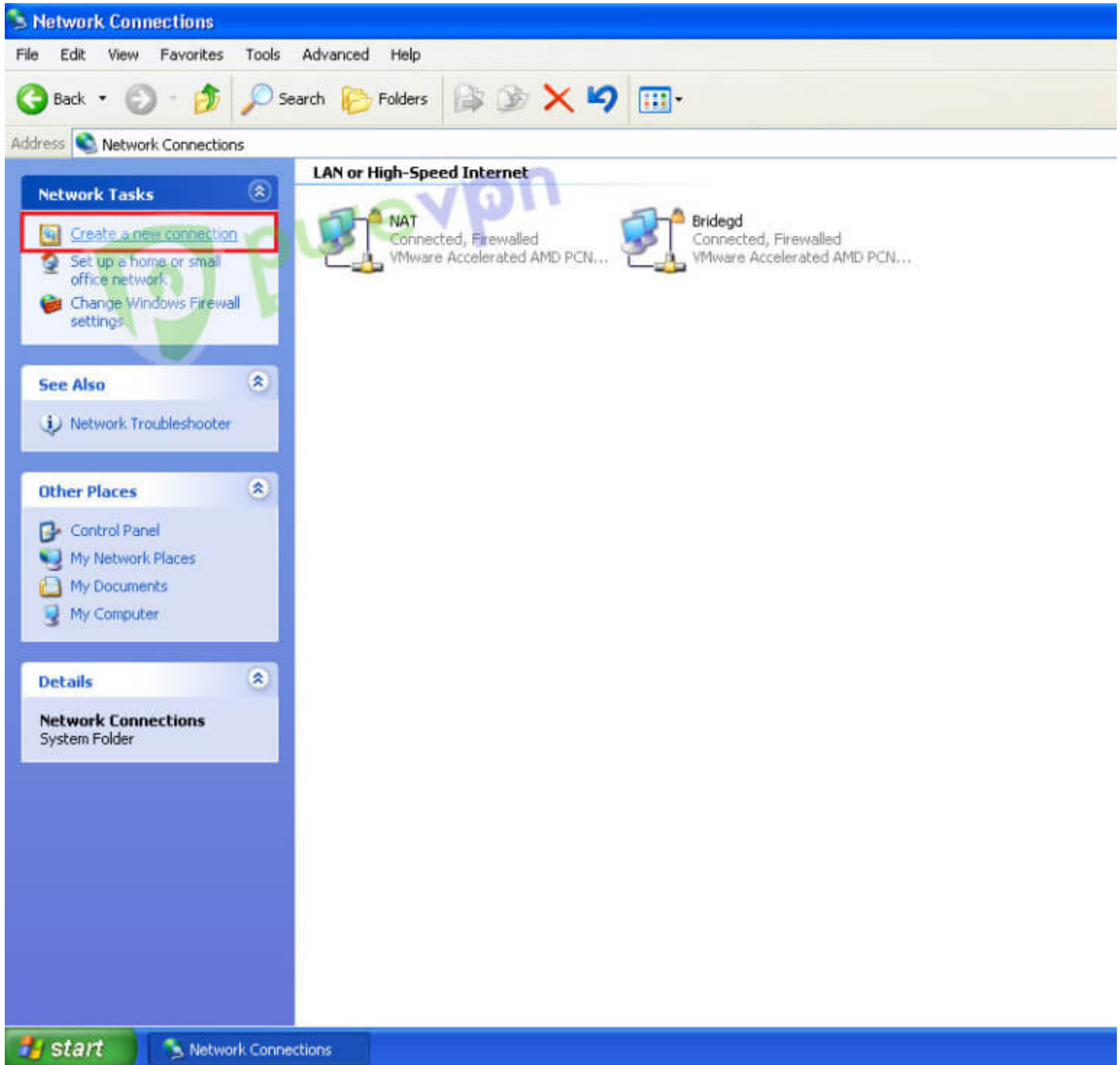
2 Click on “**Network and Internet Connections**”



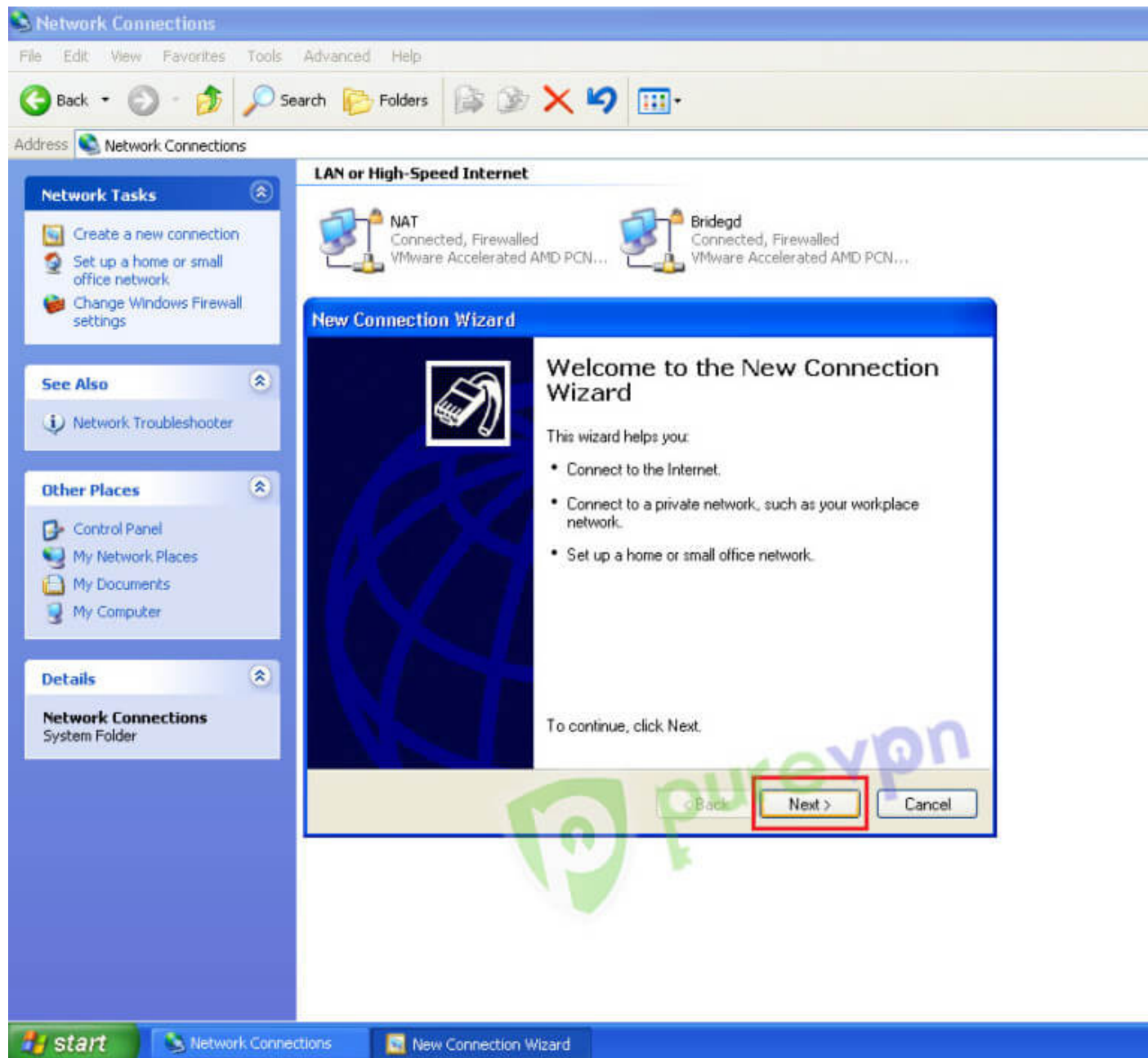
3 Click on “**Network Connections**”



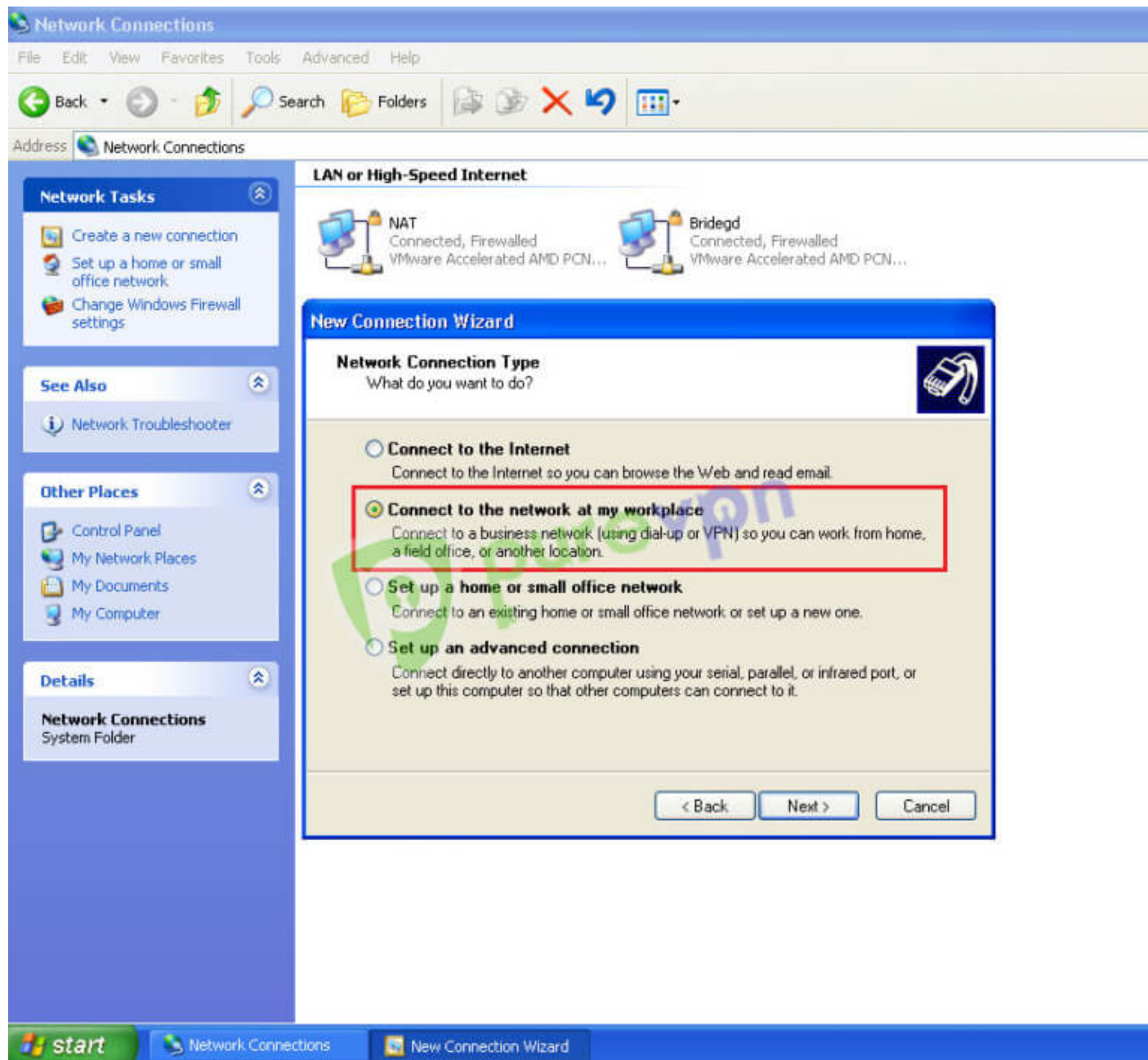
4 Click on “**Create a new connection**”



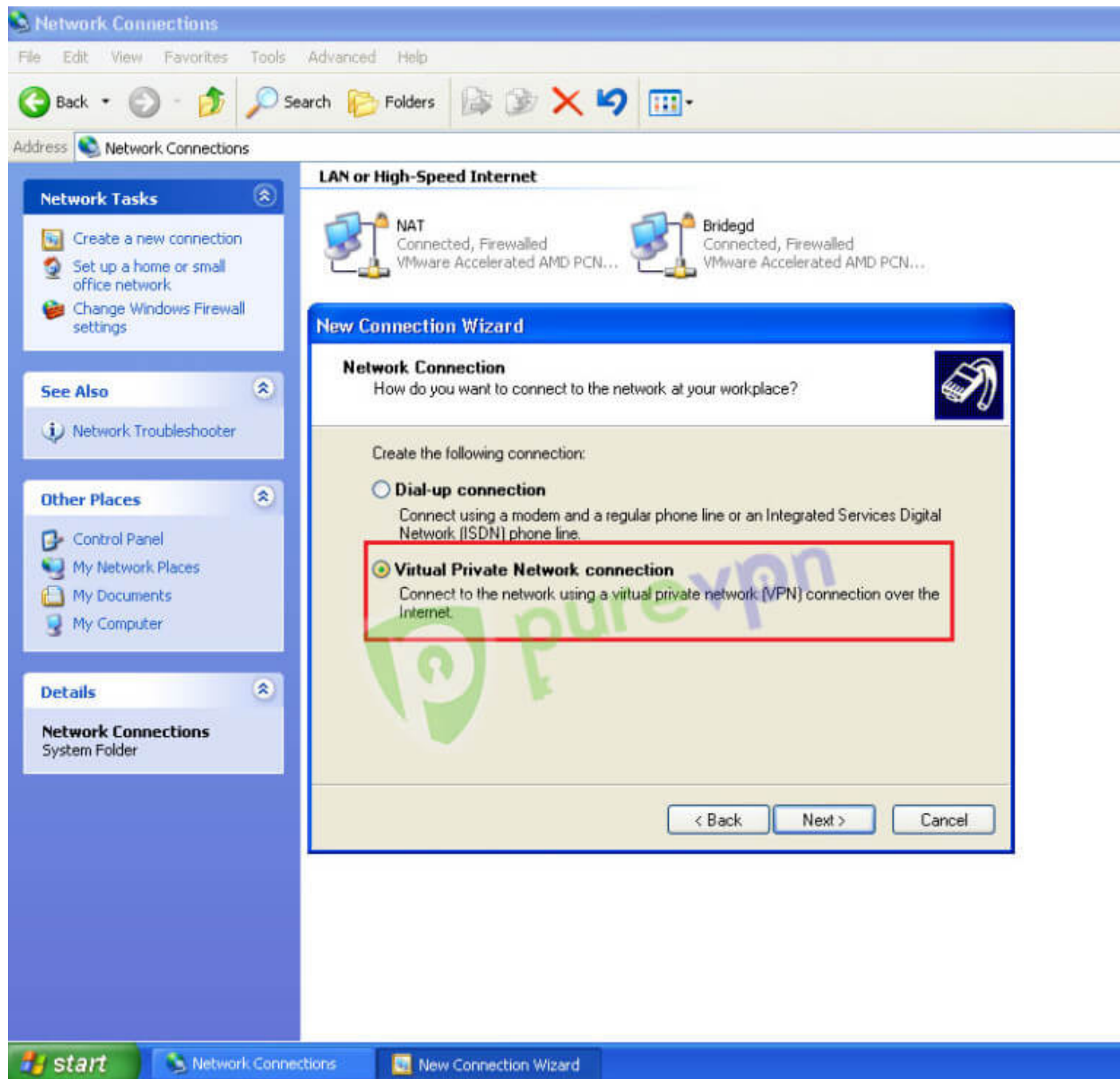
5 Click on “Next”



6 Select “Connect to the network at my workplace” and click “Next”

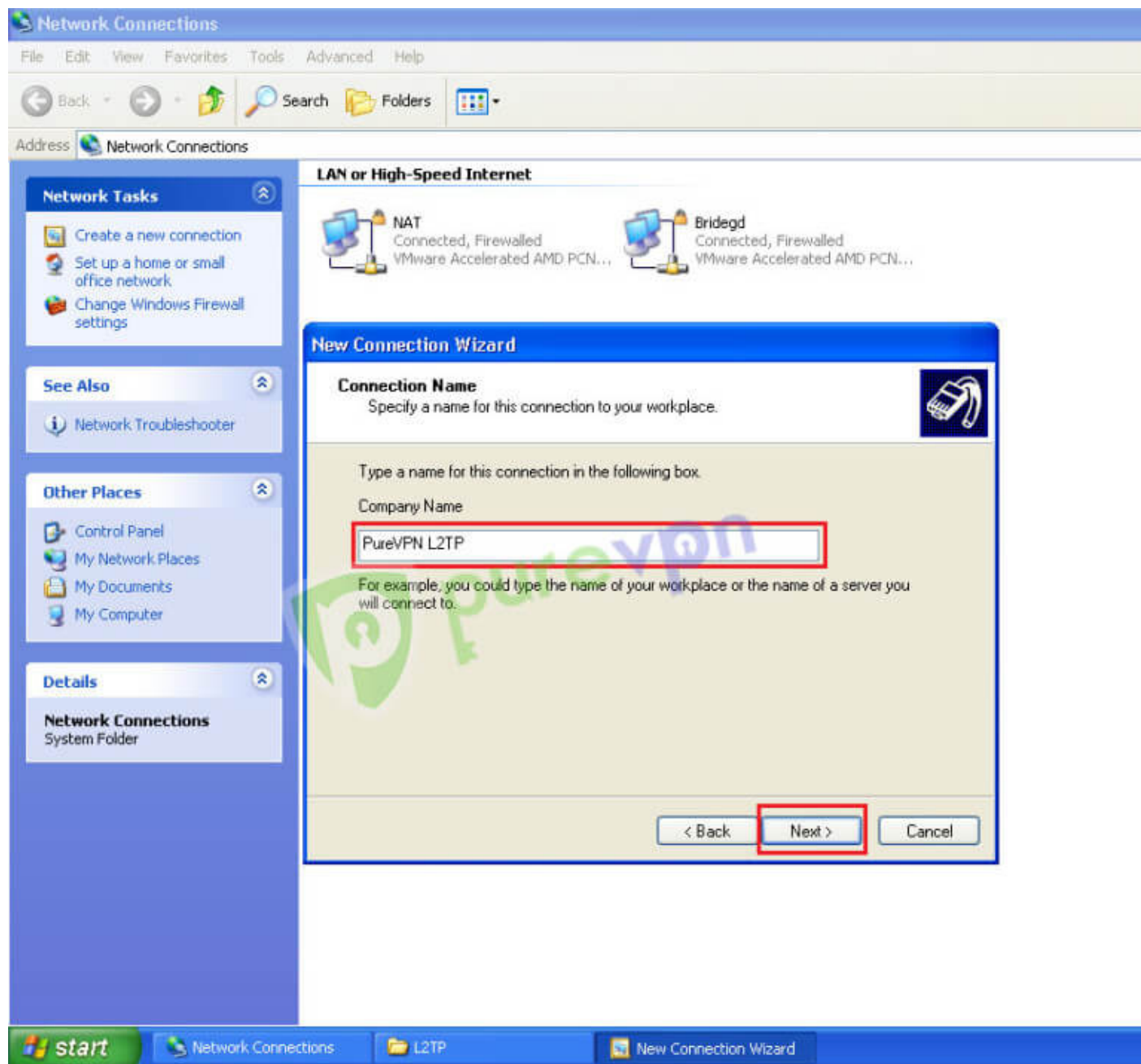


7 Select “Virtual Private Network connection” and click “Next”

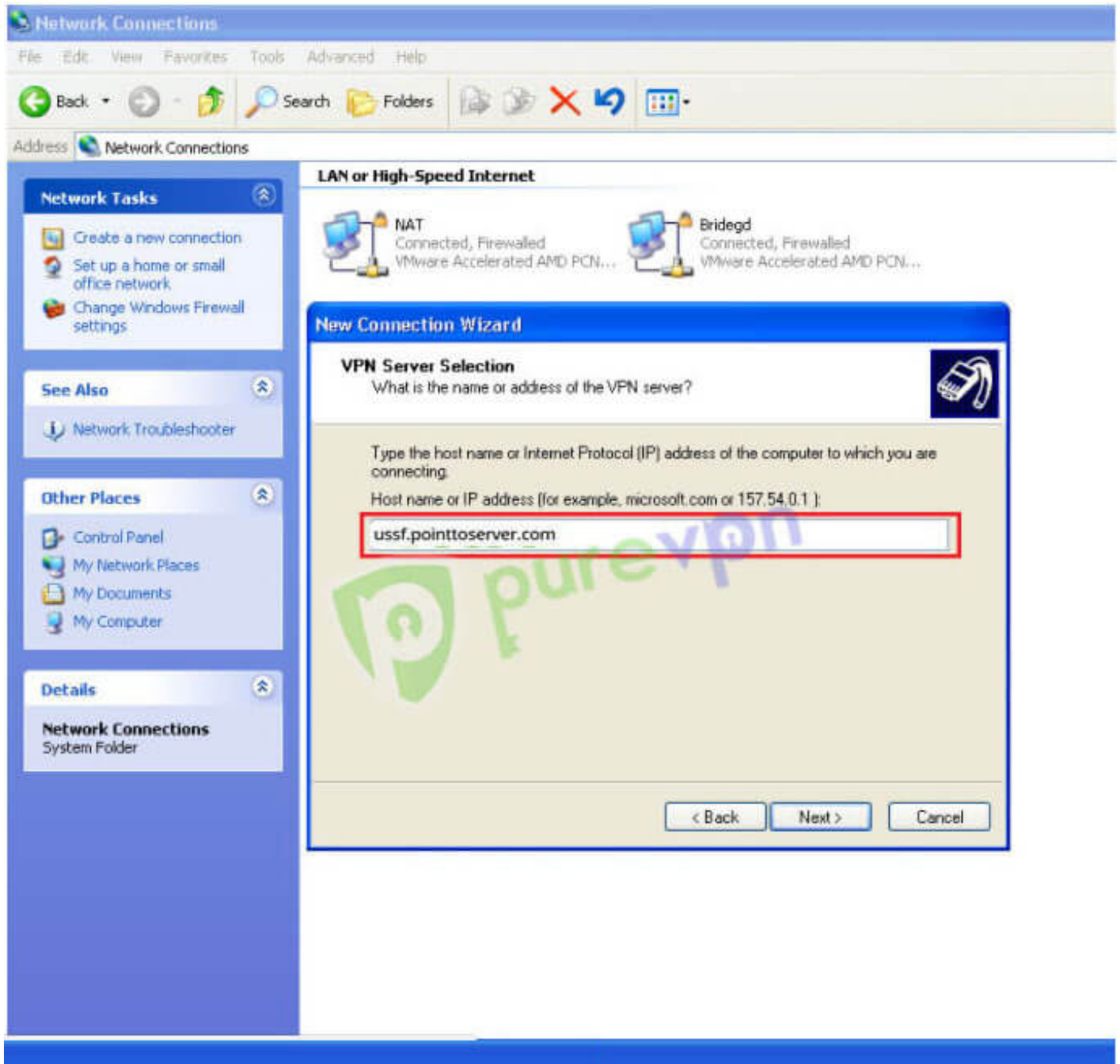


8 Insert “PureVPN L2TP” as Company Name and click “Next”

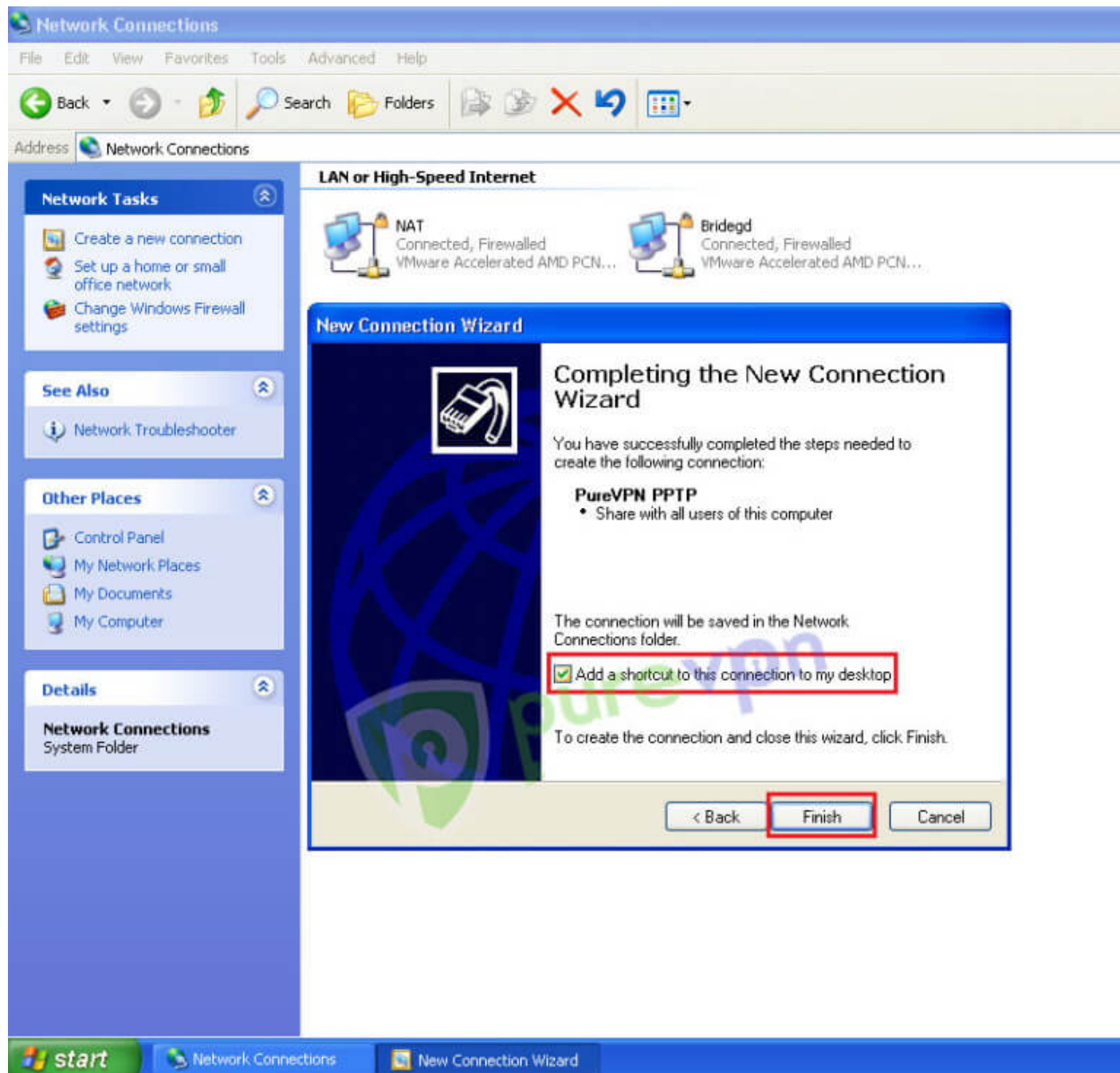




9 Insert your **desired server address** in Hostname or IP address box and click “**Next**”. [Click here to get the server list.](#)

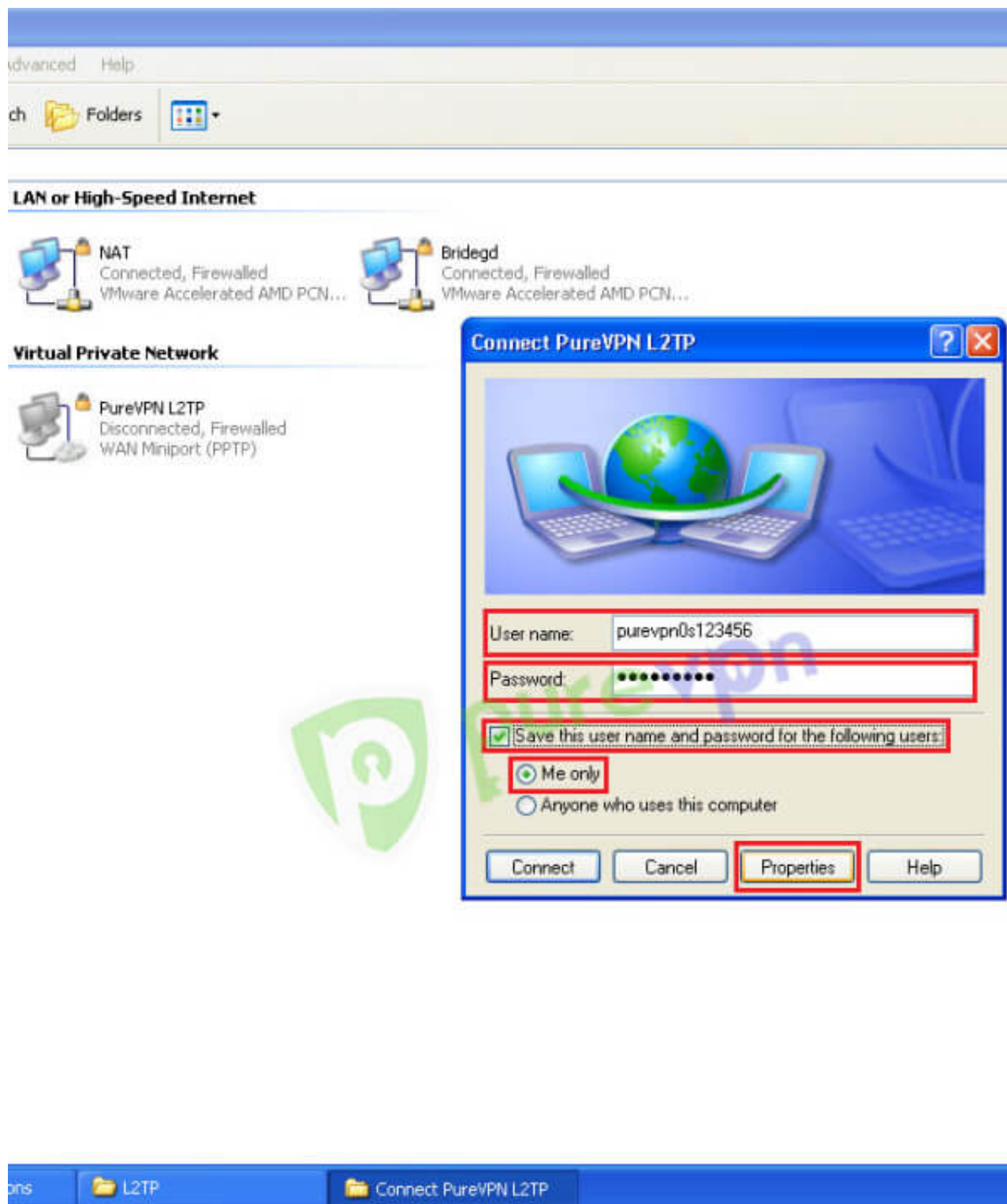


**10** Select “Add a shortcut to this connection to my desktop” and click **Finish**

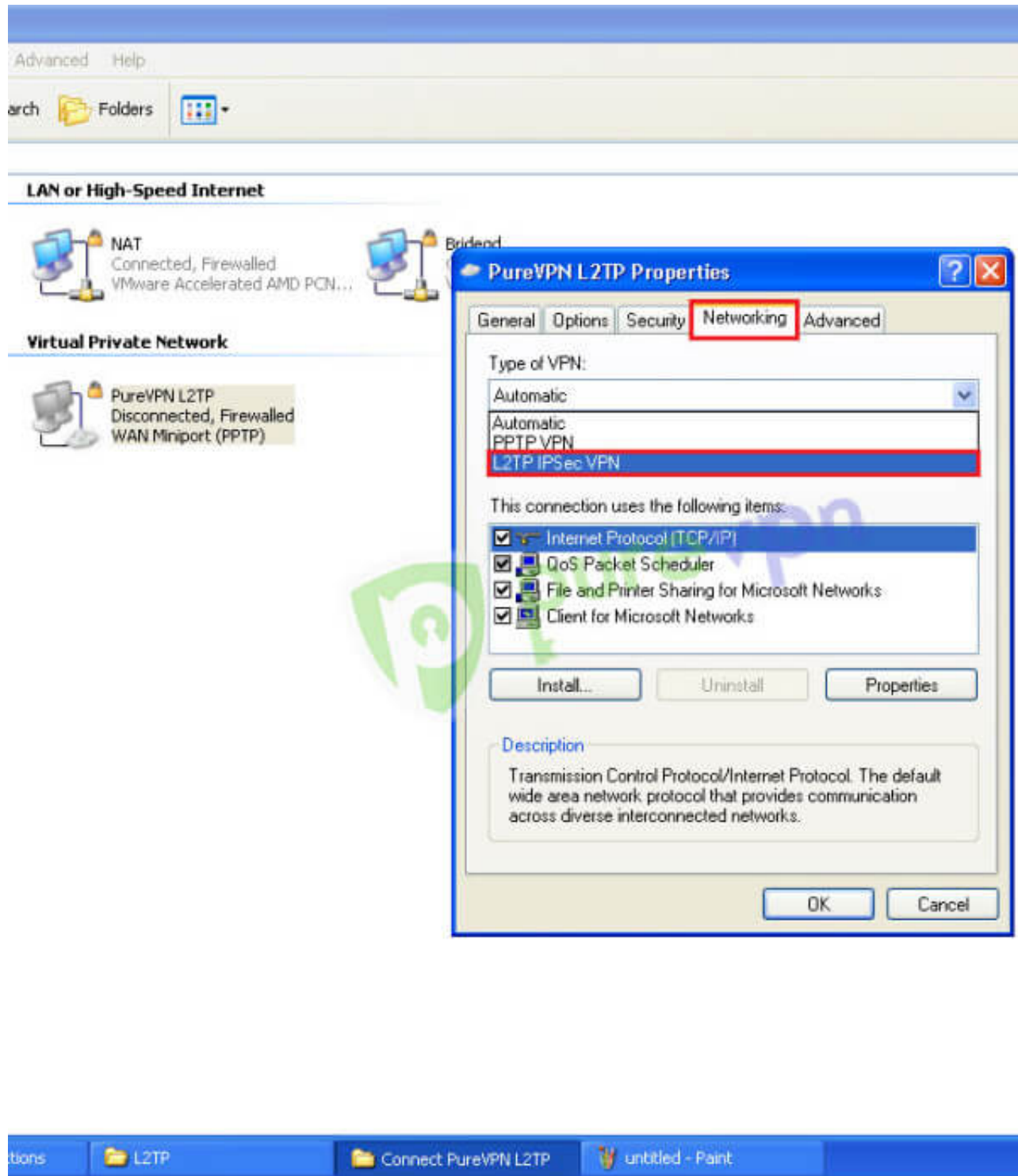


11 Insert the following info:

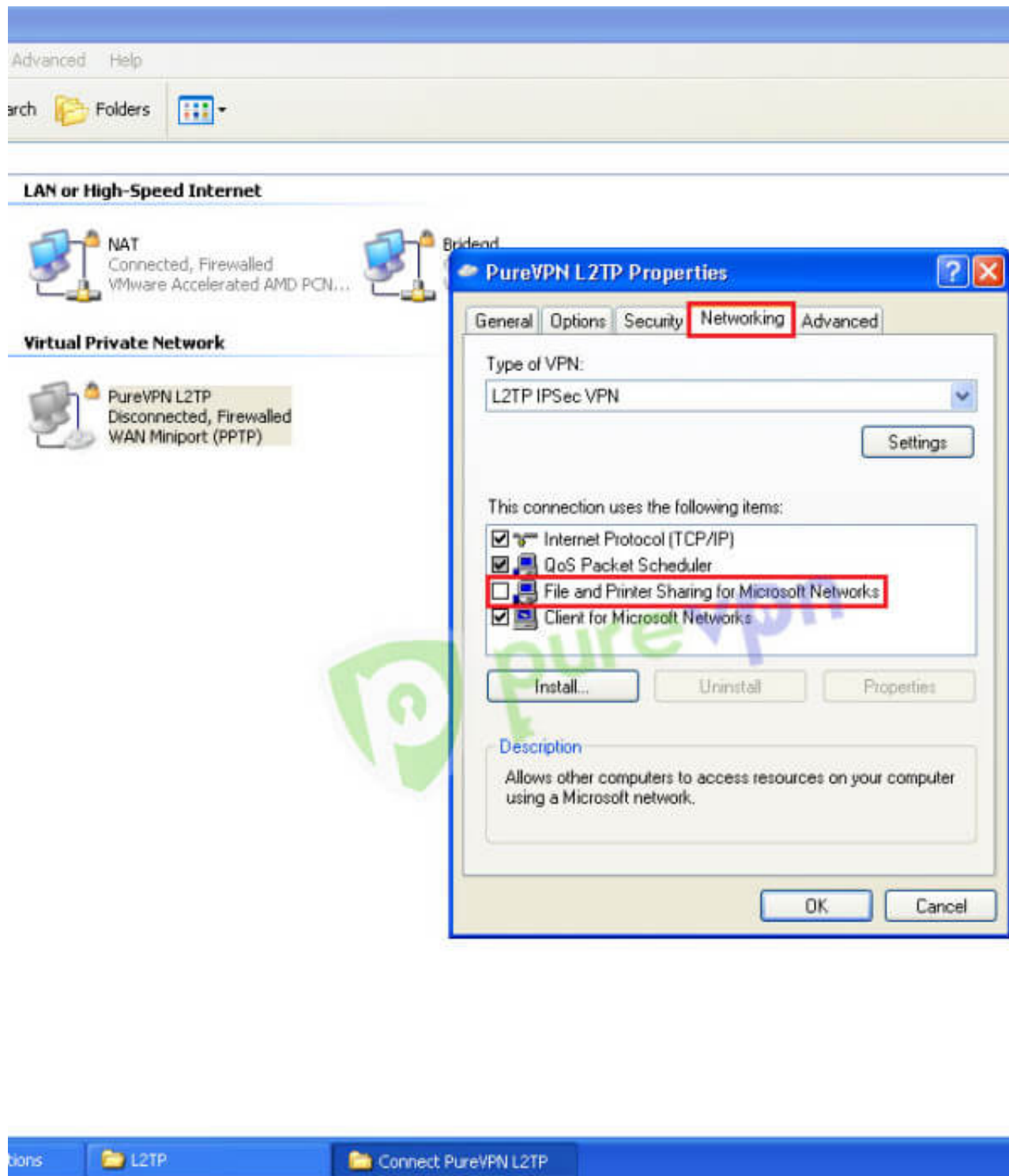
- Insert **Username and Password** provided by PureVPN. ( **Important Note: Your email address is not your VPN login username.** )
- Select **“Save this user name and password for the following users**
- Select **“Me only” or “Anyone who uses this computer”**
- Click on **Properties**



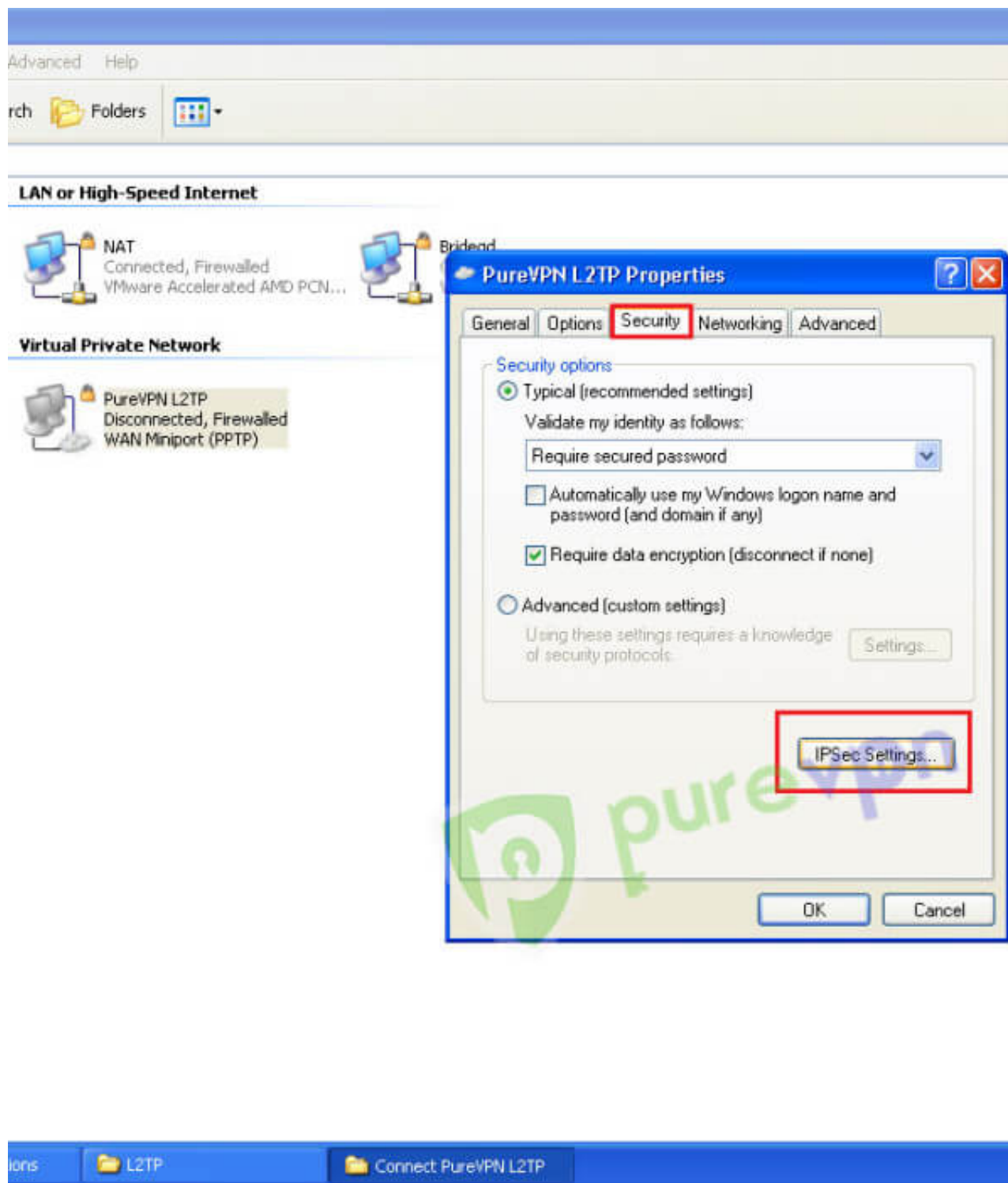
12 Click on “Networking” Tab and select “L2TP IPsec VPN” from drop down menu.



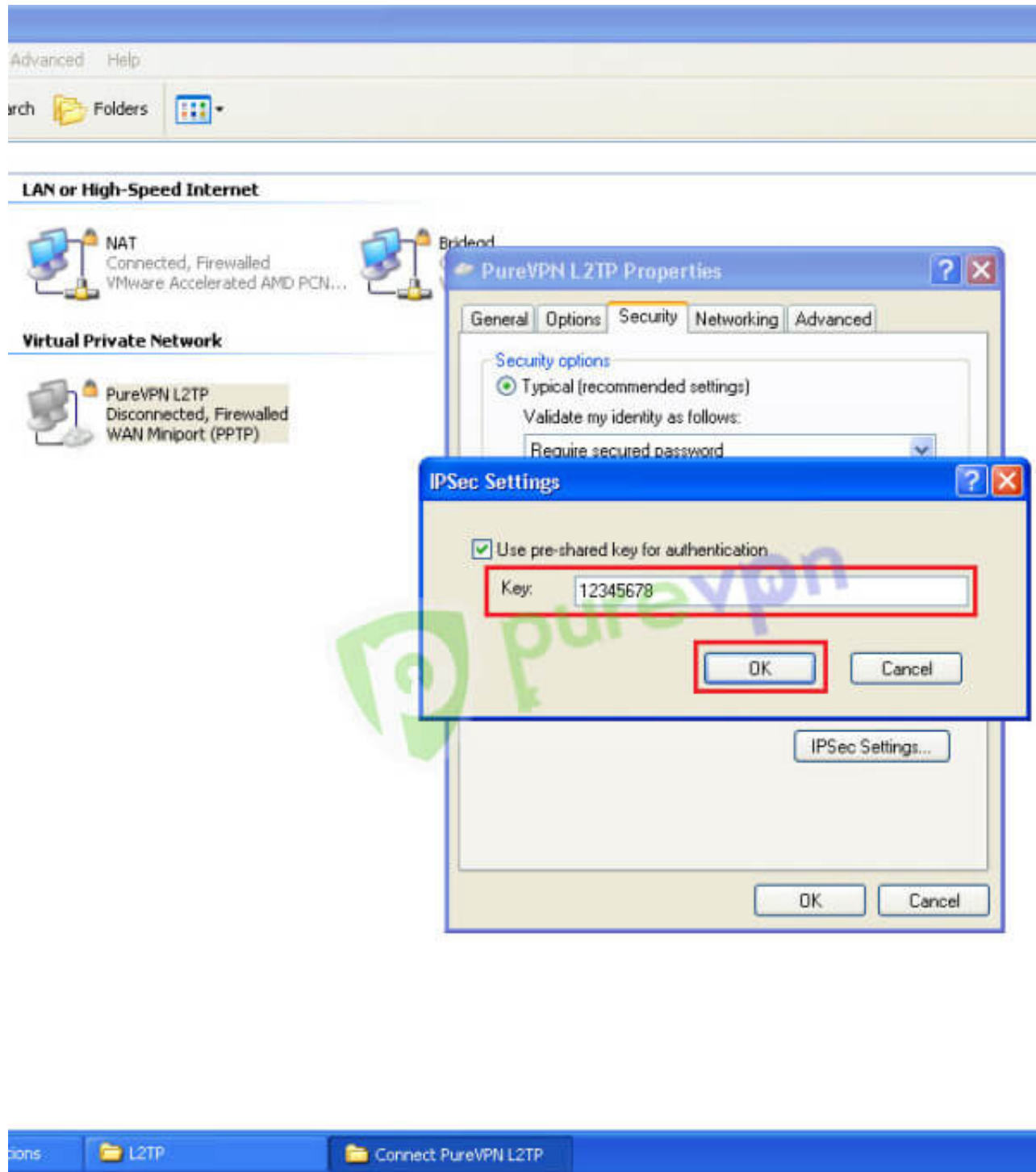
13 Uncheck “File and Printer Sharing for Microsoft Networks” and click on “Security” tab



## 14 Click IPsec Settings



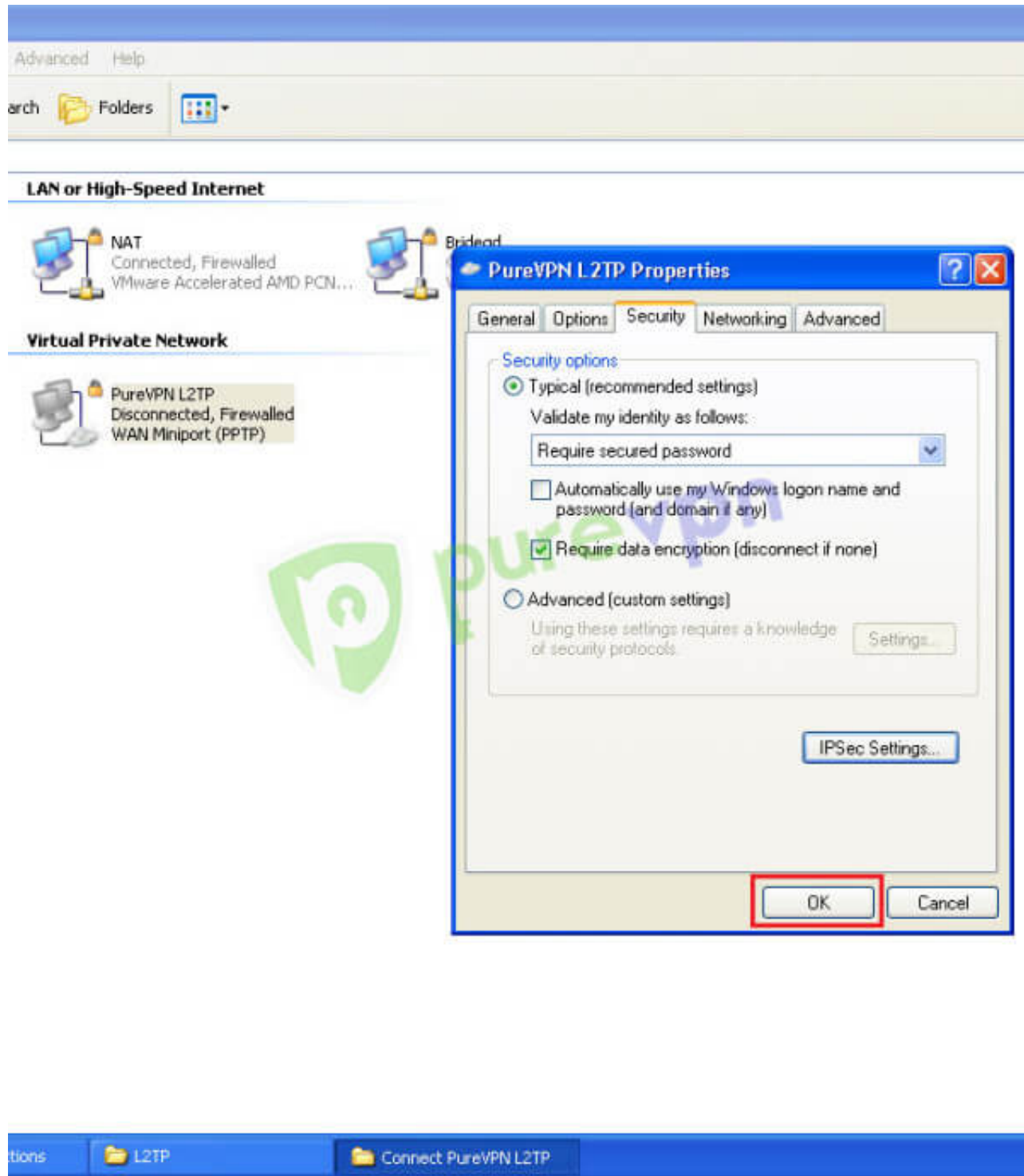
**15** Select “Use pre-shared key for authentication”, insert “12345678” in Key box and hit “OK”



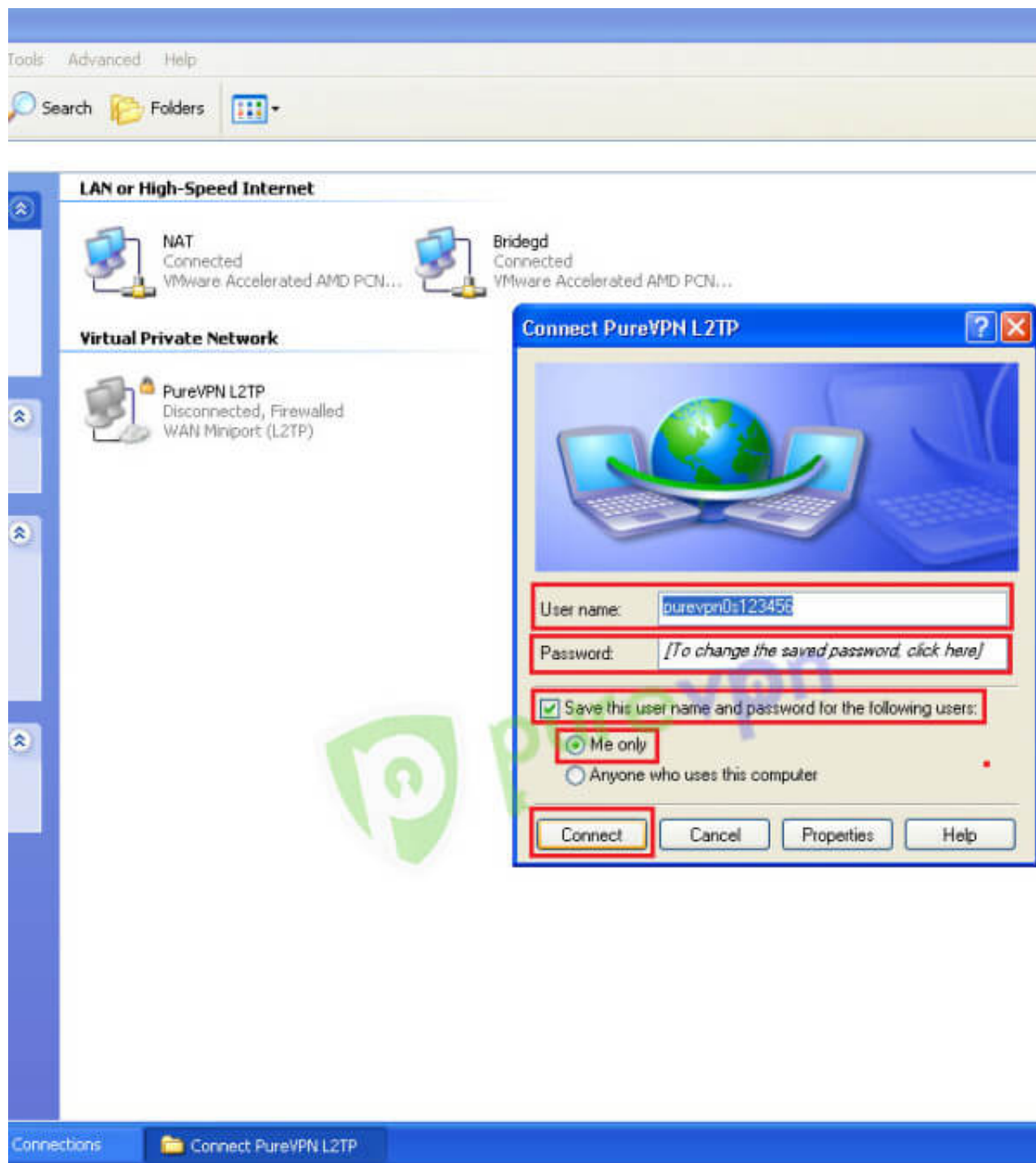
16 Select required data encryption and hit “OK”.



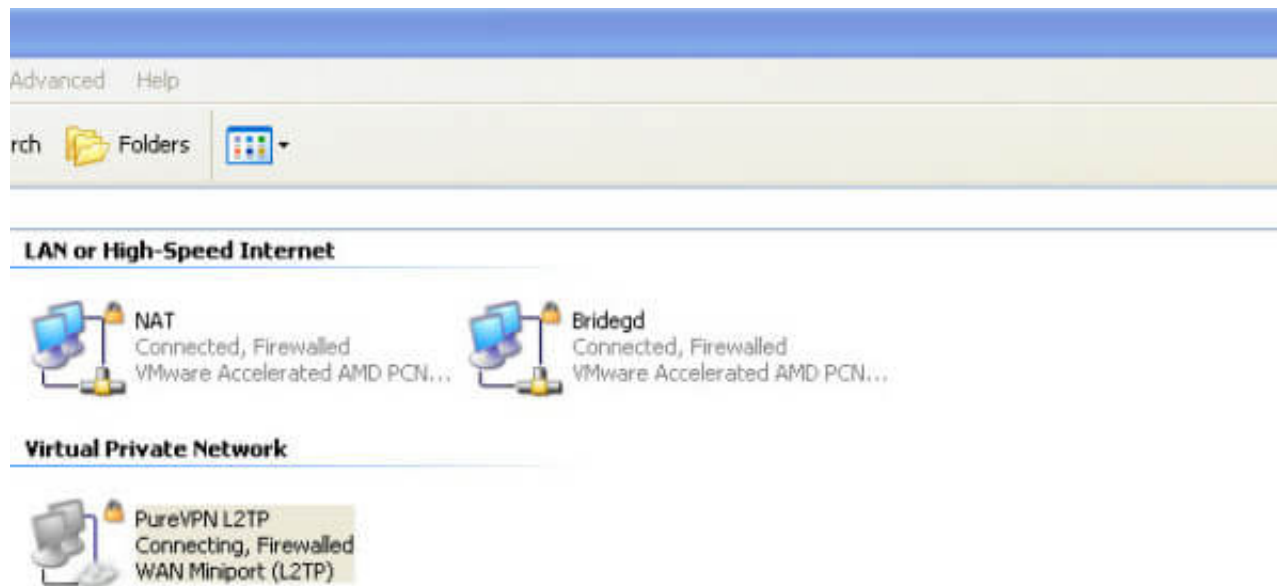
For Streaming purpose uncheck required data encryption.



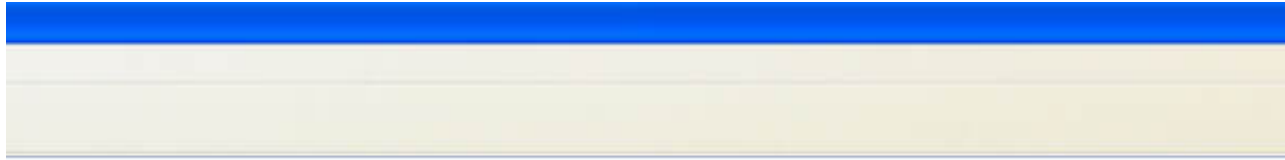
17 Click on “Connect” now



18 VPN connection will be established after username and password verification.



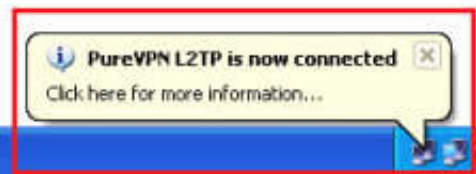
**19** You are connected NOW. Enjoy the Freedom ?



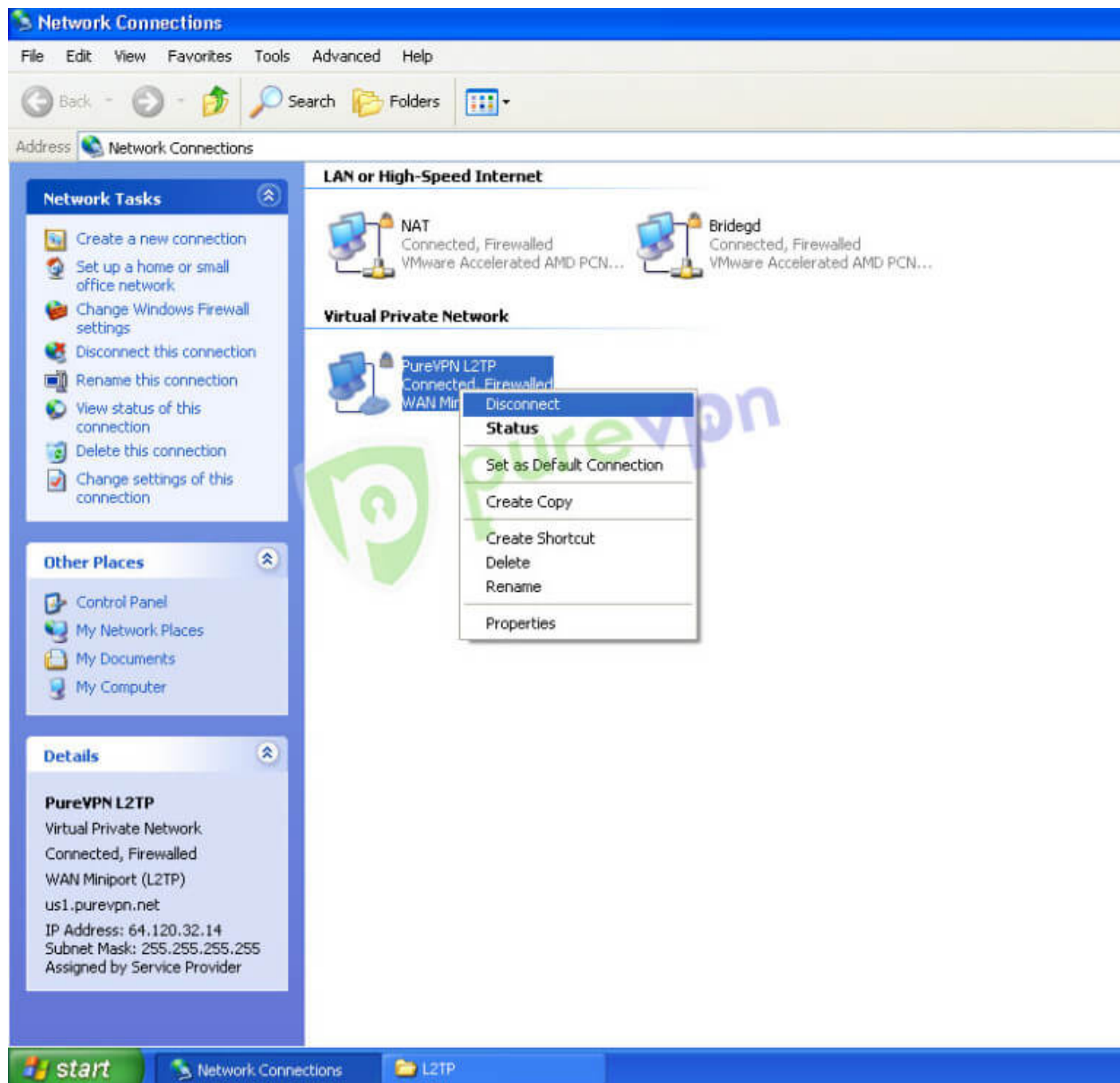
**LAN or High-Speed Internet**



**Virtual Private Network**



**20** To disconnect VPN, right click on VPN connection and select “Disconnect”



## Having Trouble Connecting?

If you're still unable to connect, then please check the most common errors and their solutions

### Error 868

[Solution](#)

**Error 800, 806, 807, 809**

[Solution](#)

**Error 720**

[Solution](#)

**Error 691**

[Solution](#)

**Error 647**

[Solution](#)

Please use the **comment box** for your suggestions & feedback. For additional help, please submit [support ticket](#) with errors and screen shots (if possible) **OR** Contact our 24/7 live chat.