

How to Setup PureVPN Manually on Windows Vista PPTP?

Things to Consider:

Before you begin, please make sure that:

- You have a working internet connection
- Windows Supported Device.
- A Premium PureVPN account (If you haven't bought yet [click here](#) to buy)

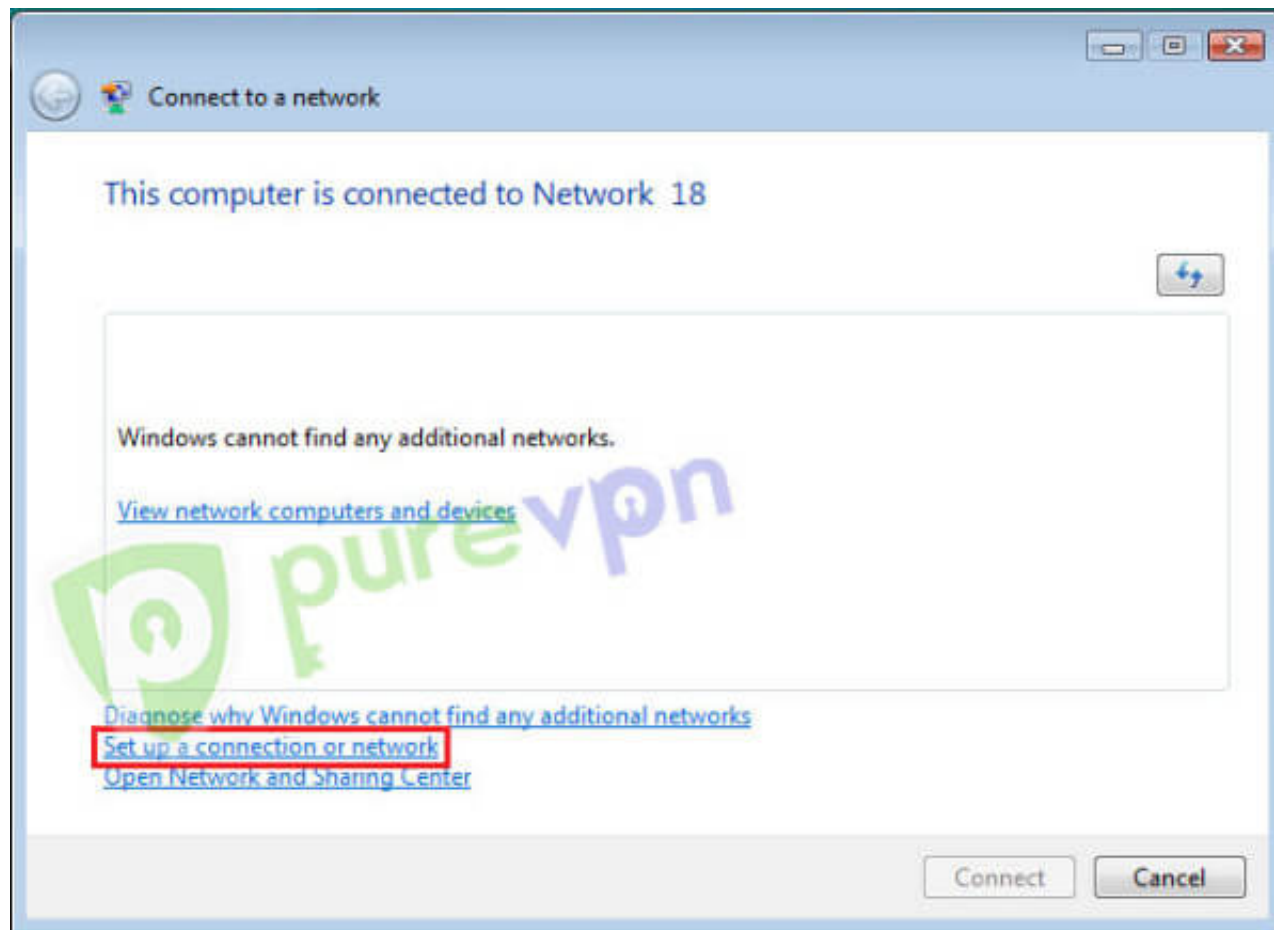
Follow these simple steps to configure PureVPN on Windows Vista.

Note: We have just launched New PureVPN Windows Software BETA version. If you need guide on BETA version [Click Here](#).

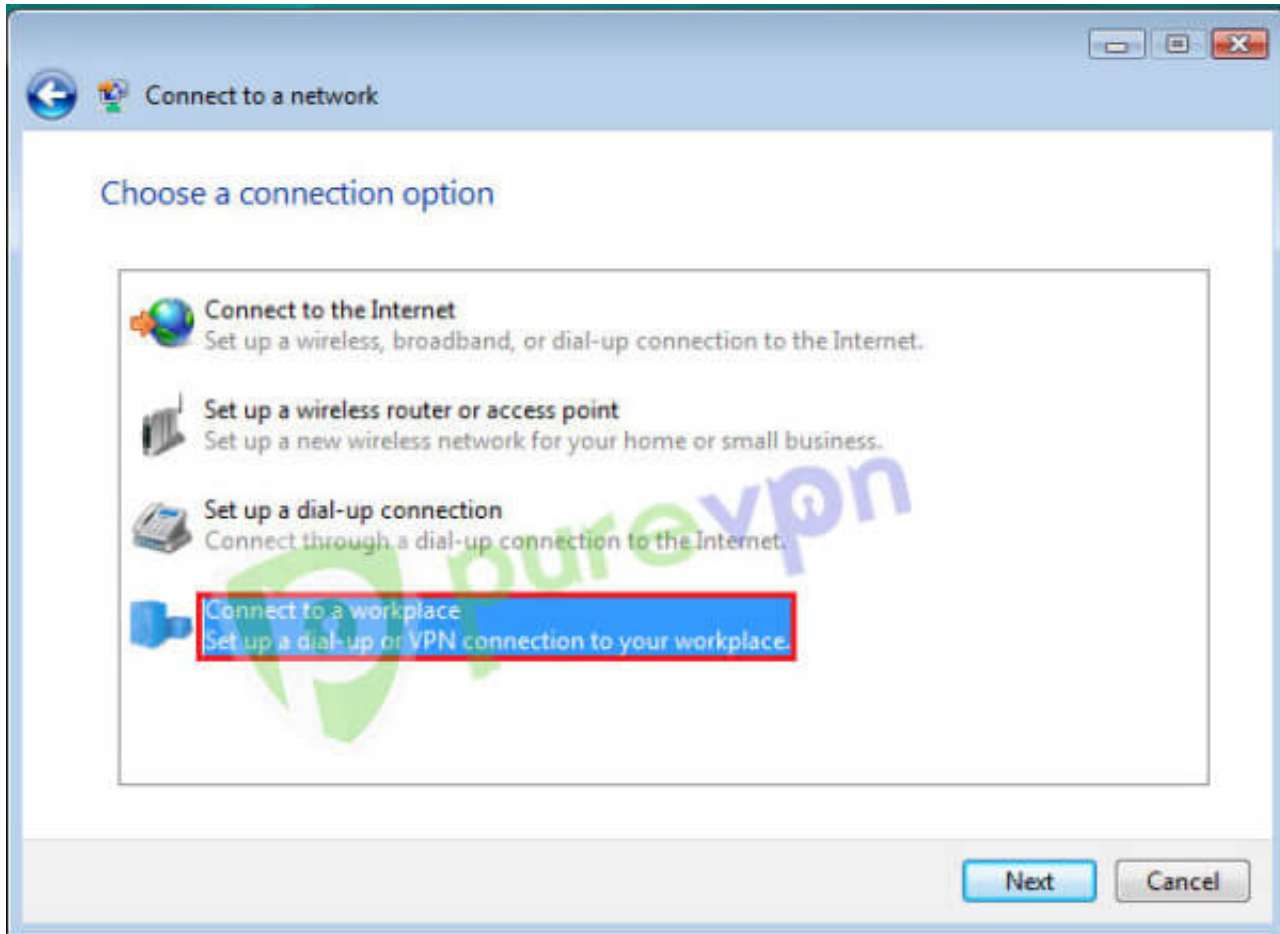
1 Click on **Start** and click on “**Connect To**”



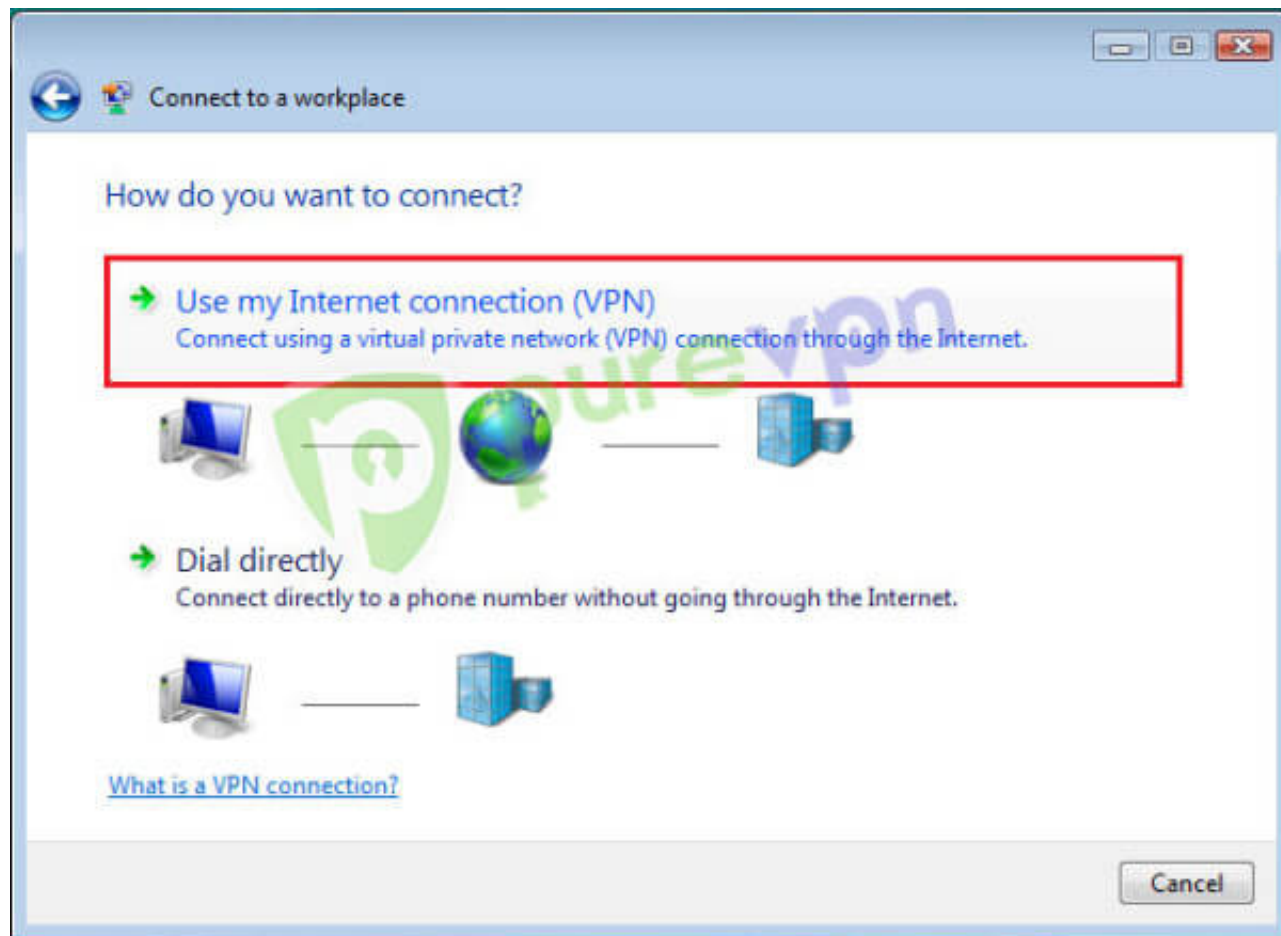
2 Click on “**Set up a connection or network**”



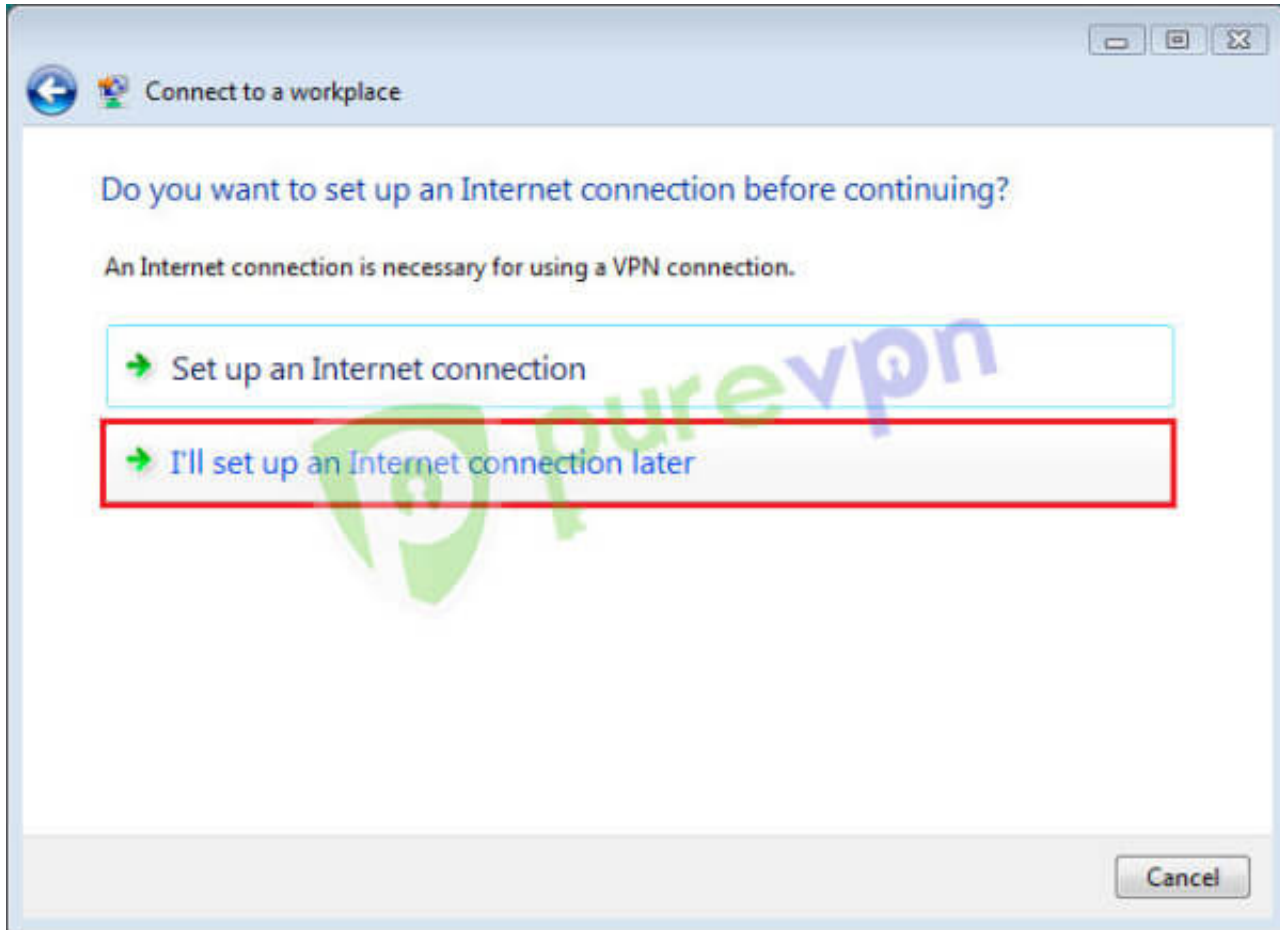
3 Select **Connect to a workplace** and click “Next”



4 Click on **“Use my Internet connection (VPN)”**

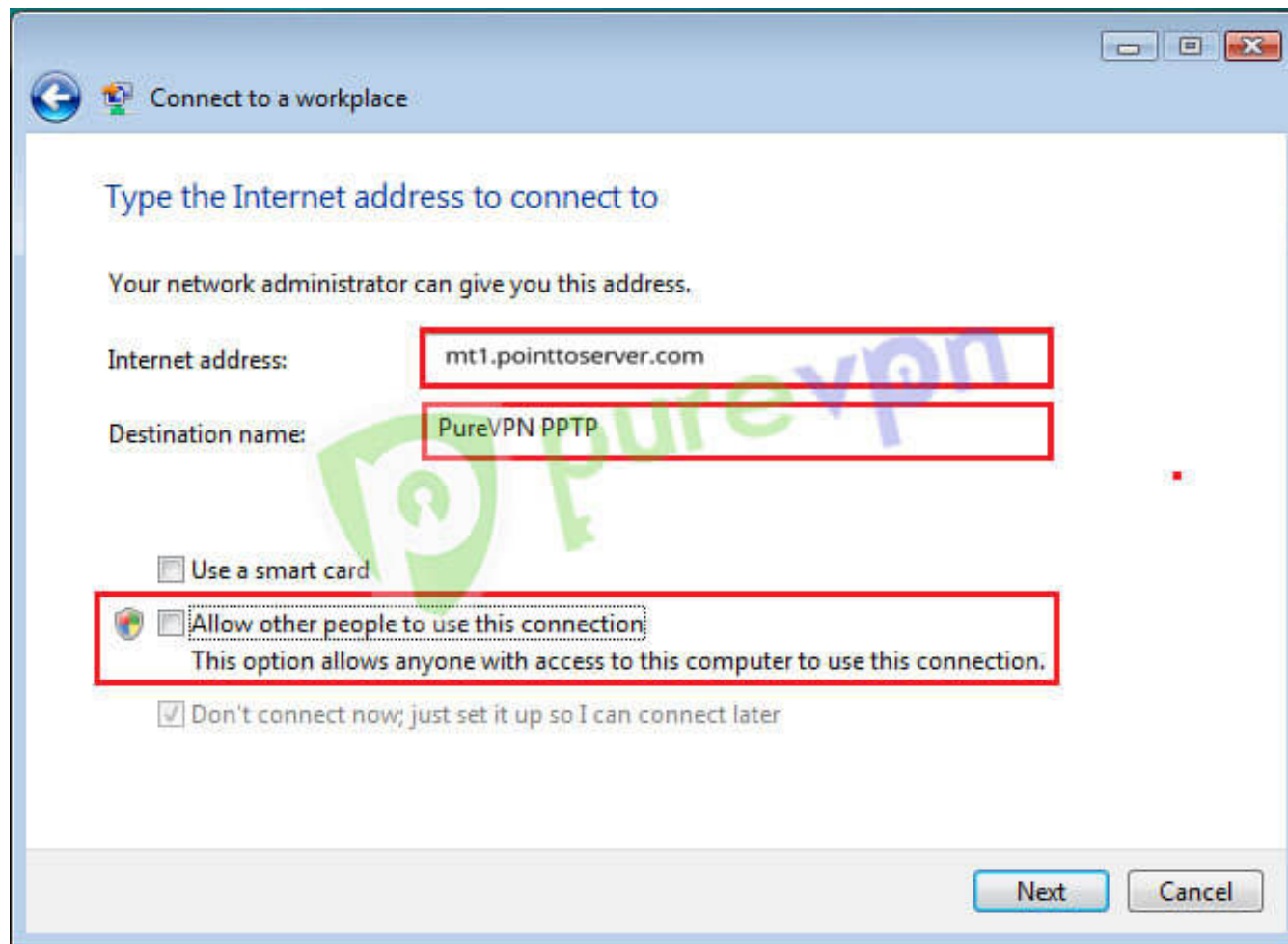


5 Click on "I'll set up an Internet connection later"

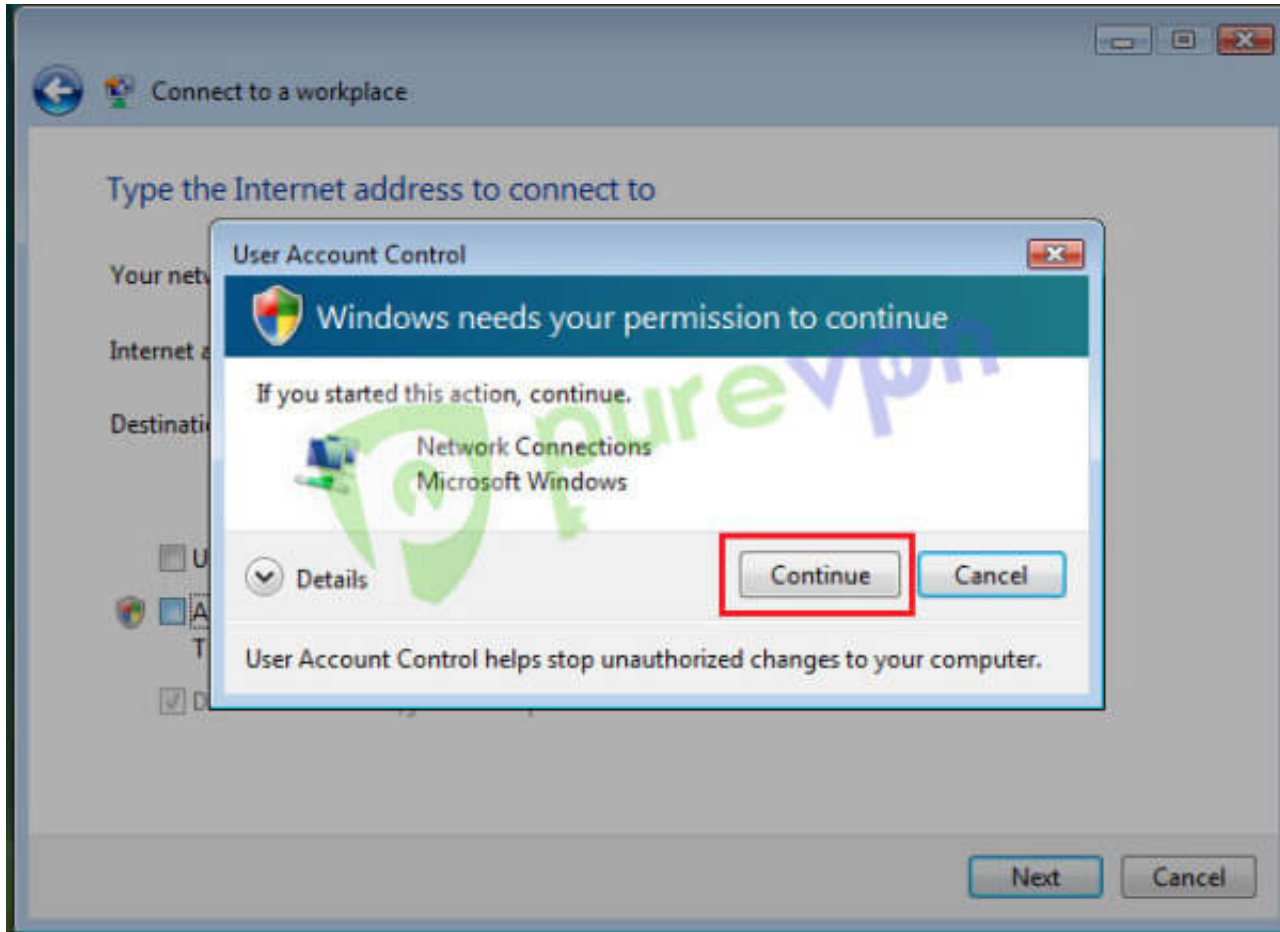


6 Insert the following info:

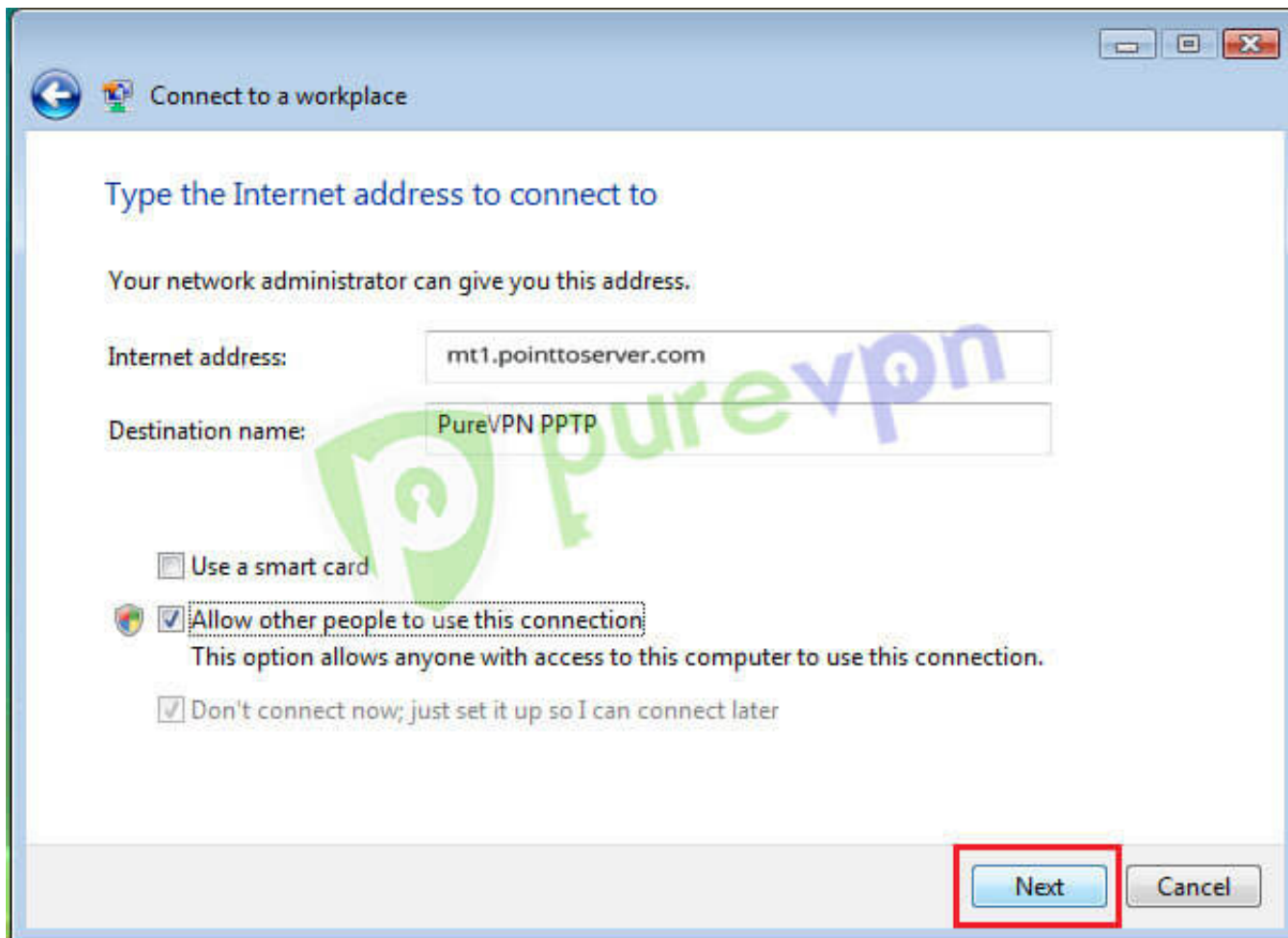
- Insert **desired server address** in **Internet Address box**. [Click here](#) to get the server list.
- Insert **PureVPN PPTP** or **PureVPN US** etc as **Destination name**
- Click on "**Allow other people to use this connection**"



7 Click on **Continue**

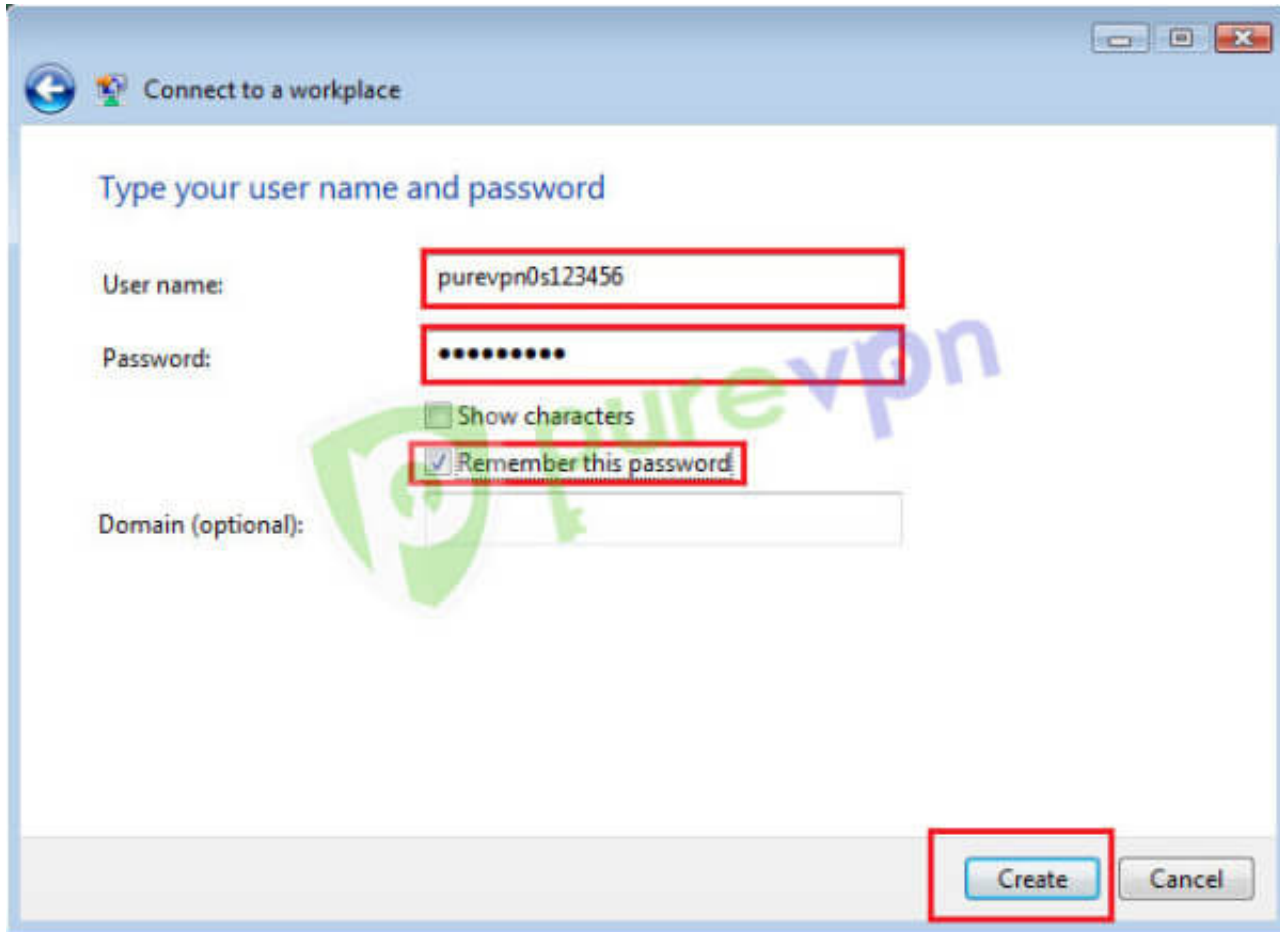


8 Click "Next"

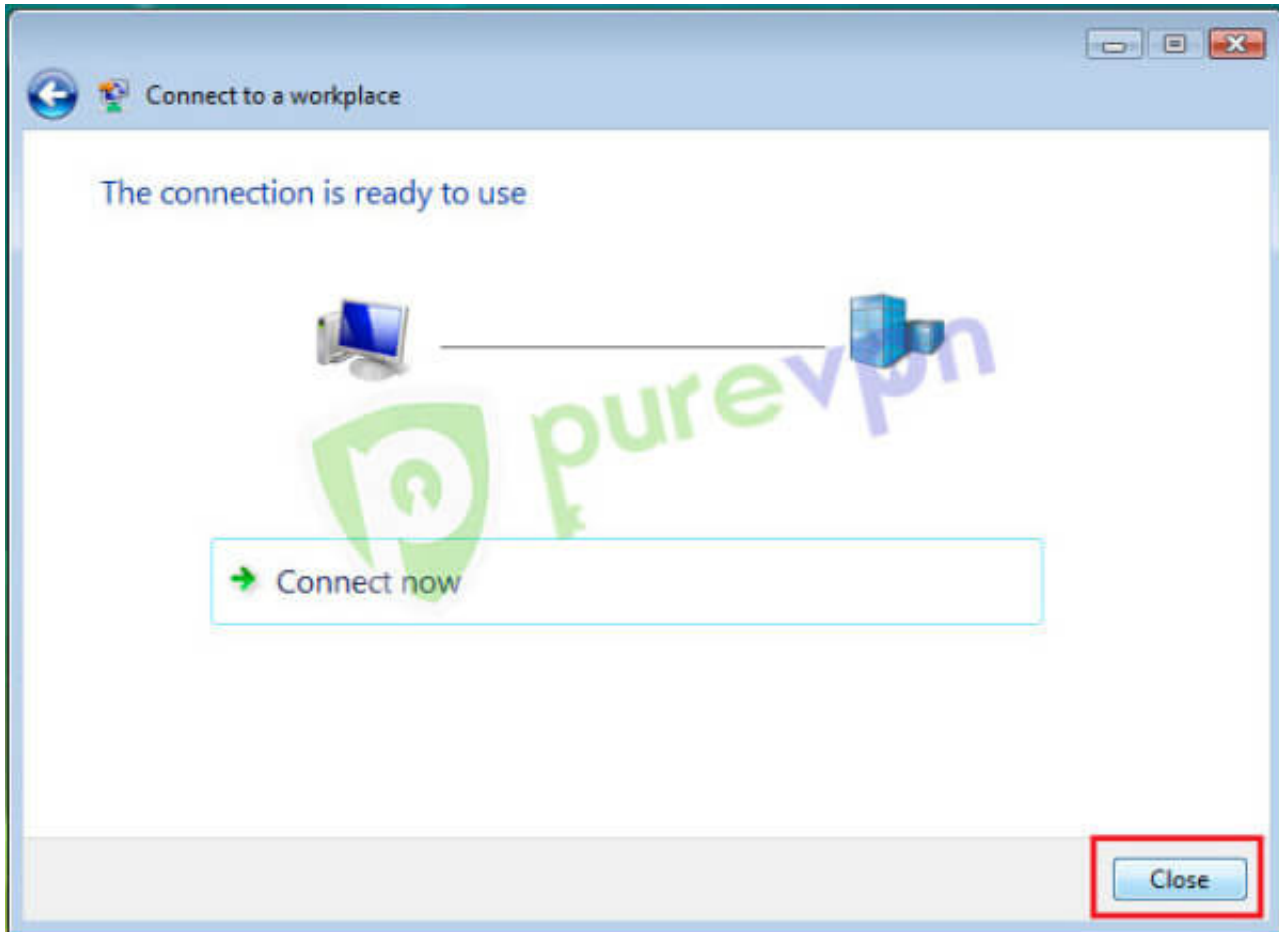


9 Insert the following info:

- Insert your **Username** and **Password** provided by **PureVPN**.
- Tick "**Remember this password**"
- Click on "**Create**"



10 Click on **“Close“**



11 Click on **Start** and Click on **Connect To**

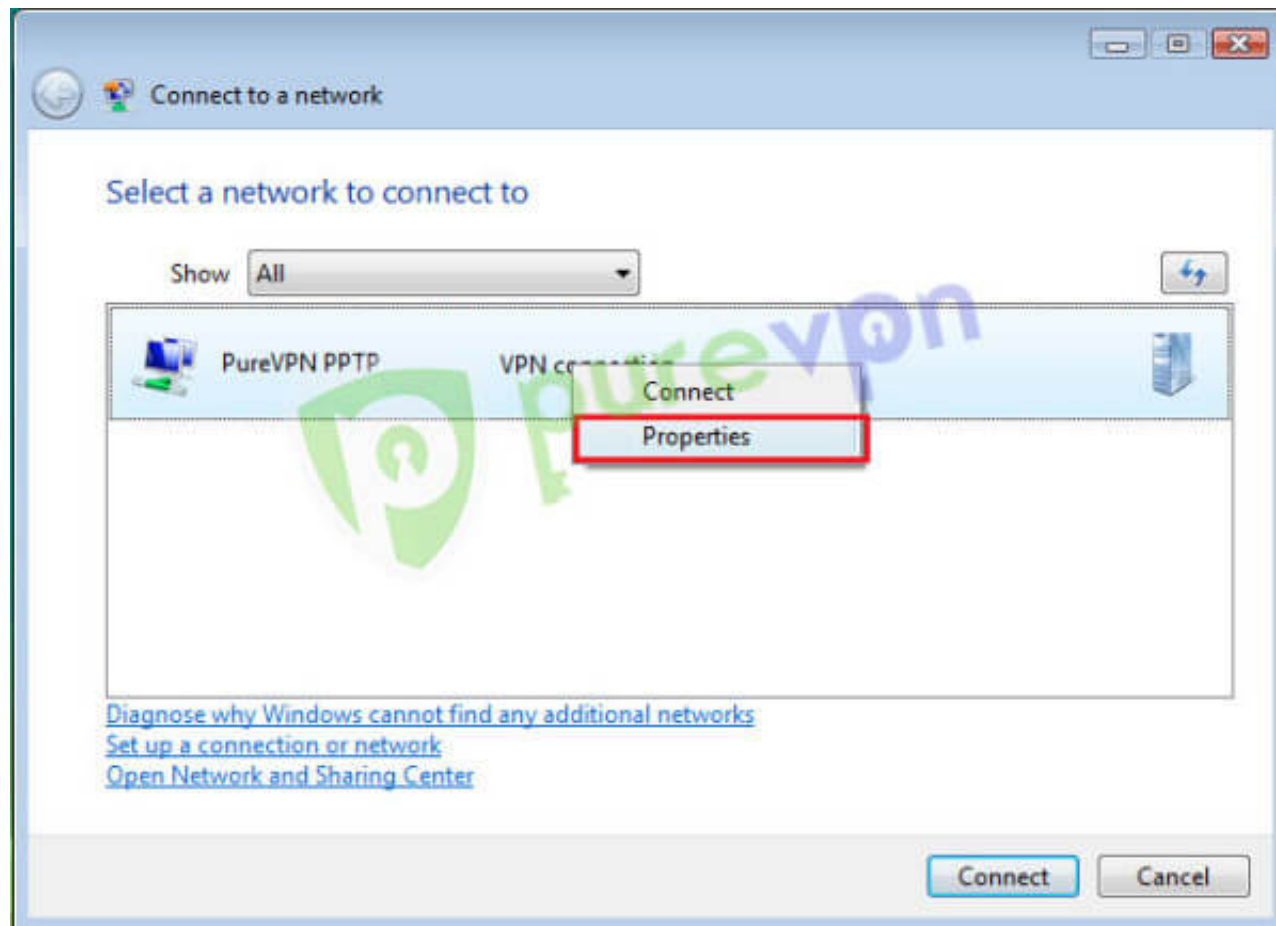


12 Right click on PureVPN PPTP connection and select “Properties“

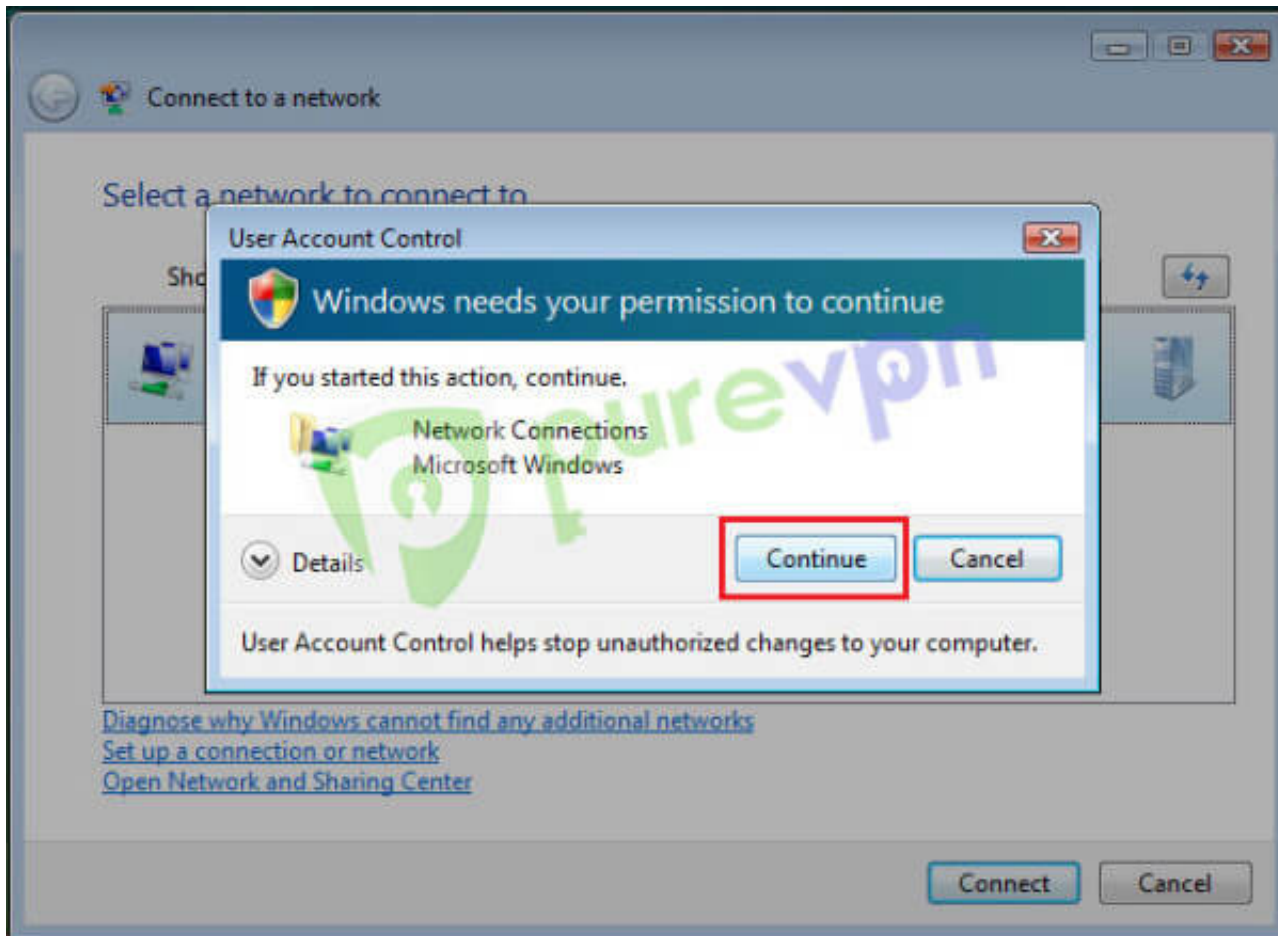
PureVPN Support

Solution of Your Problems

<https://support.purevpn.com>

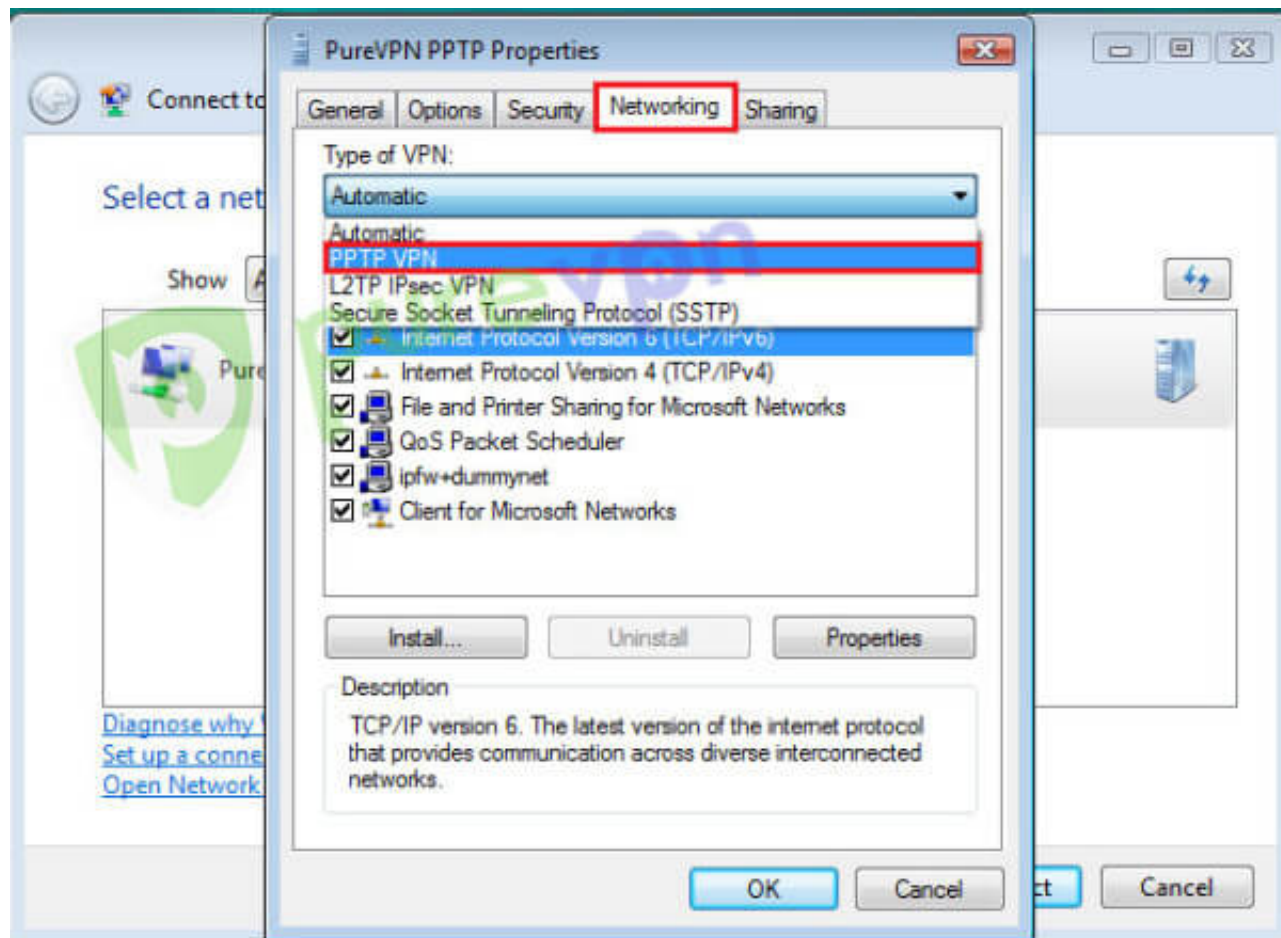


13 Click on "Continue"



14 Insert the following info:

- Click on "**Networking**" tab
- Select "**PPTP VPN**" from drop down menu



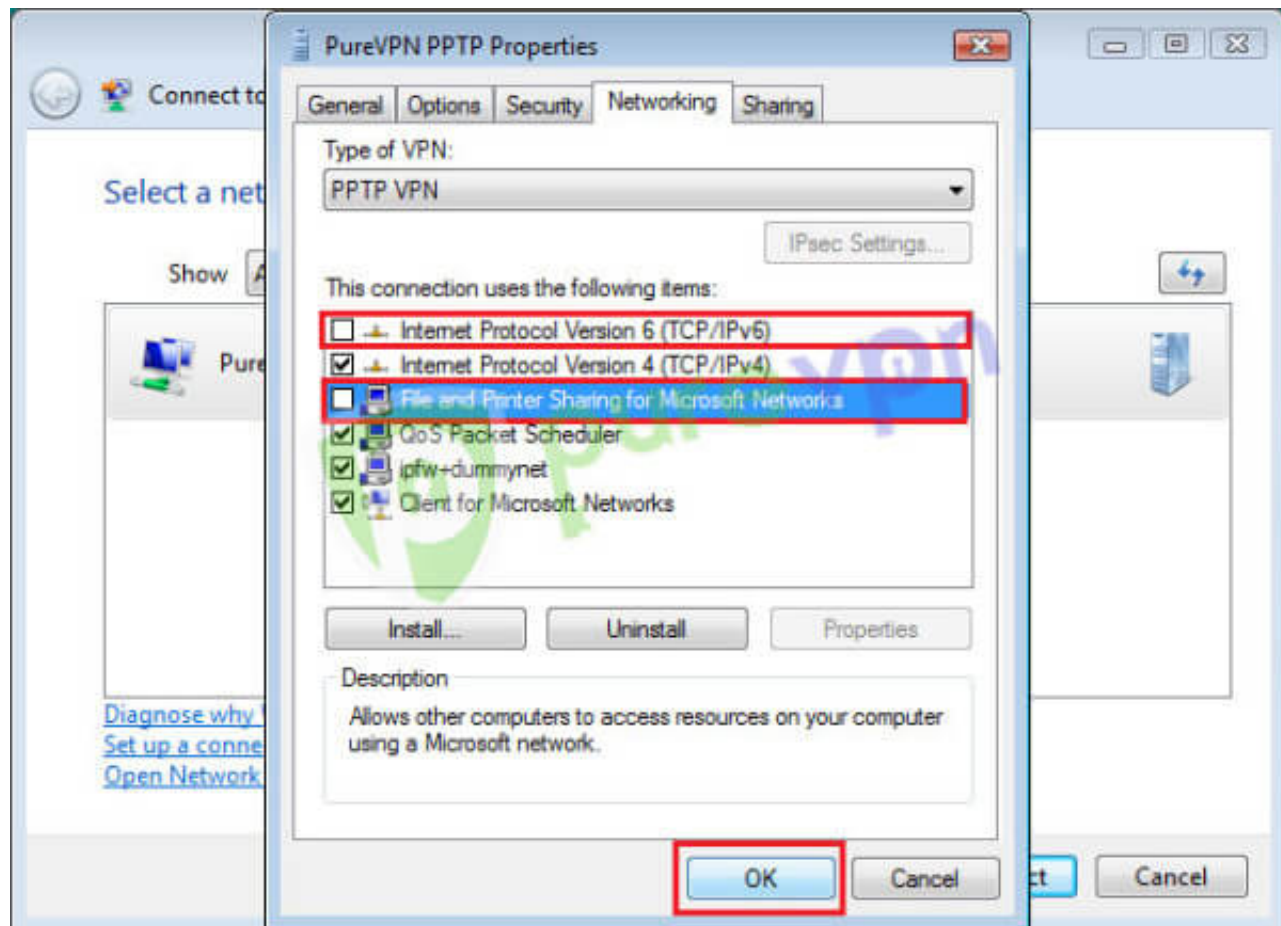
15 Insert the following info:

- Uncheck **"Internet Protocol Version 6 (TCP/IPv6)"** and **"File and Printer Sharing for Microsoft"**
- Click on **"OK"**

PureVPN Support

Solution of Your Problems

<https://support.purevpn.com>

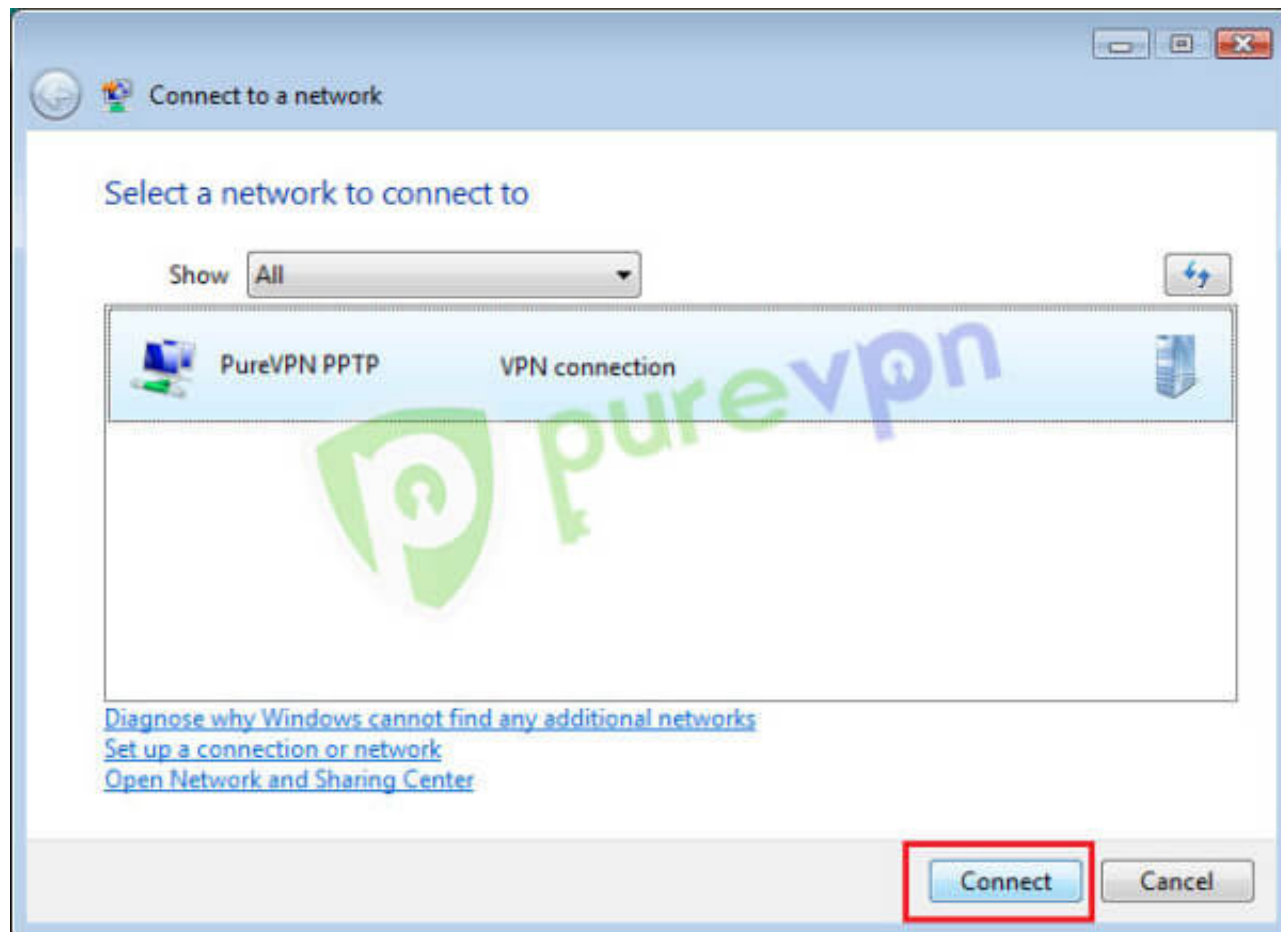


16 Click on "Connect"

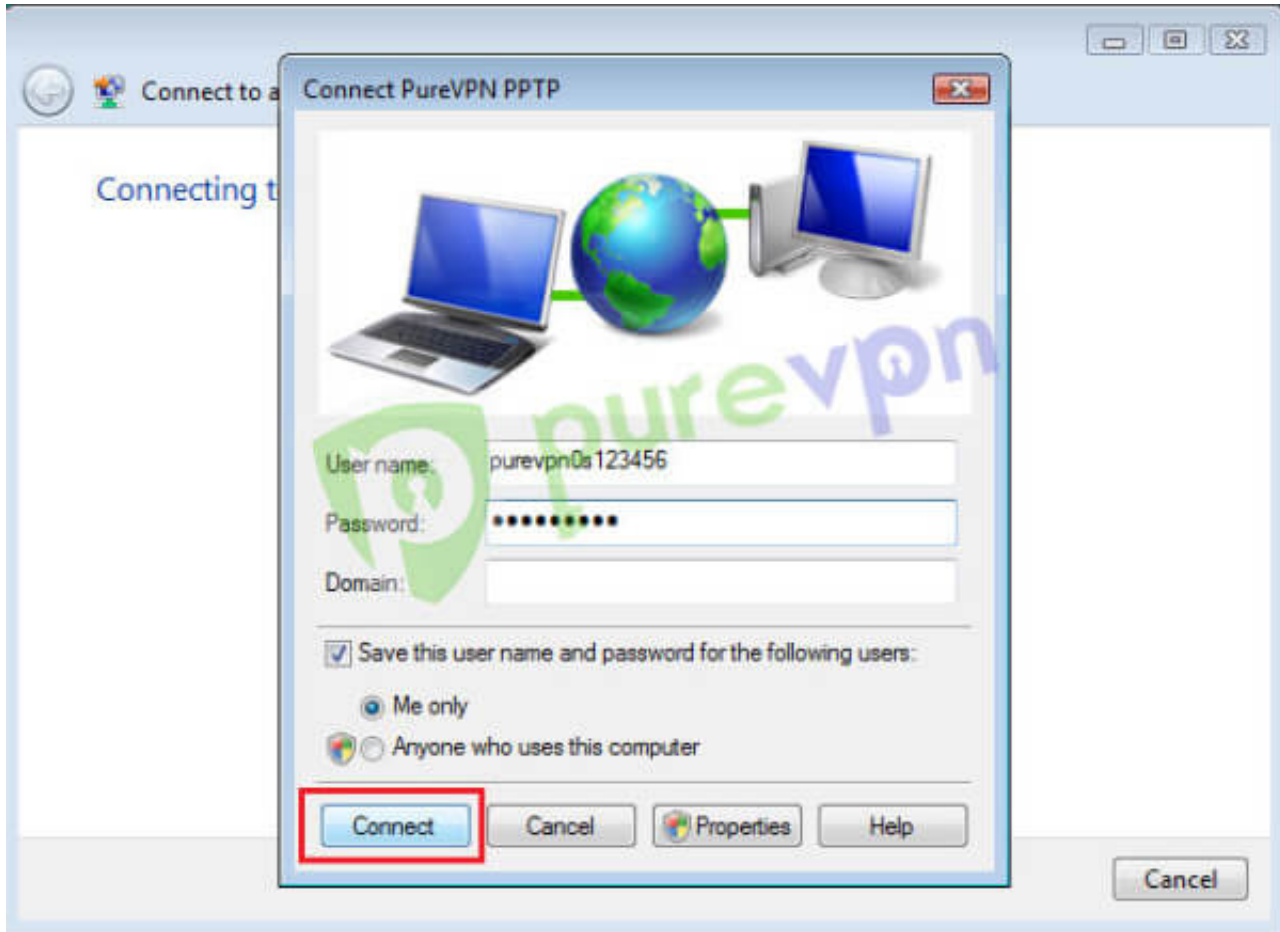
PureVPN Support

Solution of Your Problems

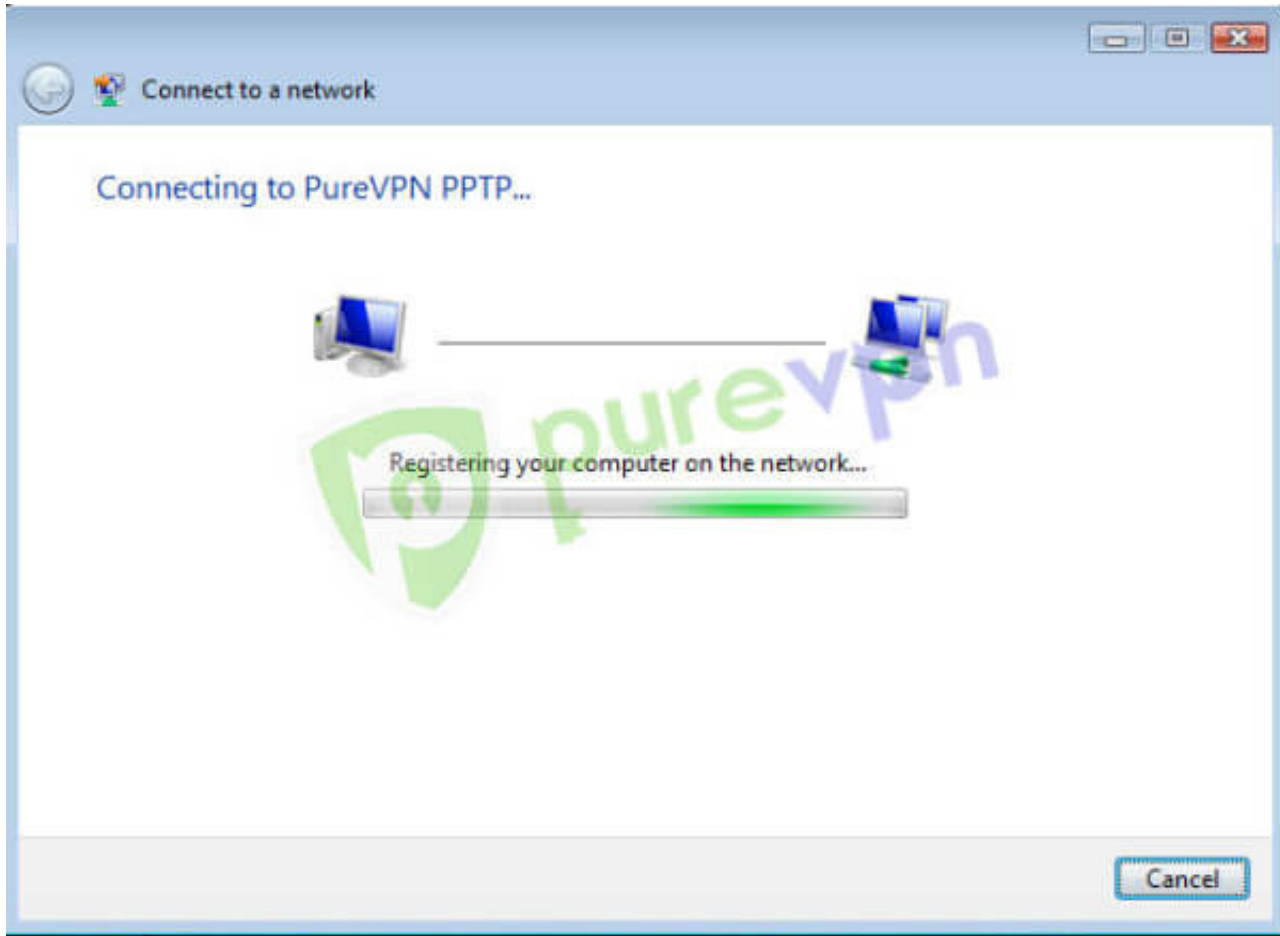
<https://support.purevpn.com>



17 Click “**Connect**” again



18 VPN will establish after account verification

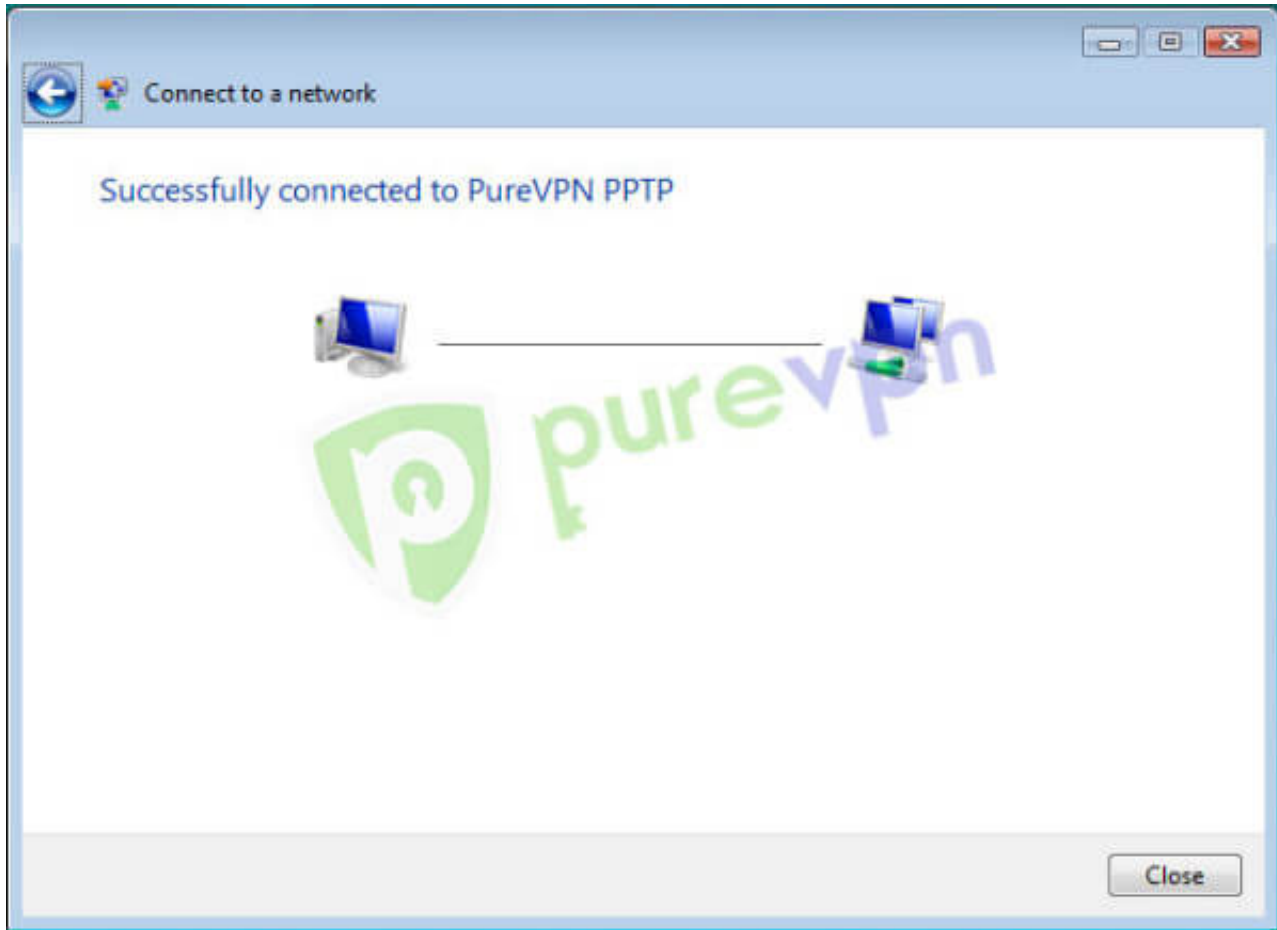


19 VPN is successfully connected

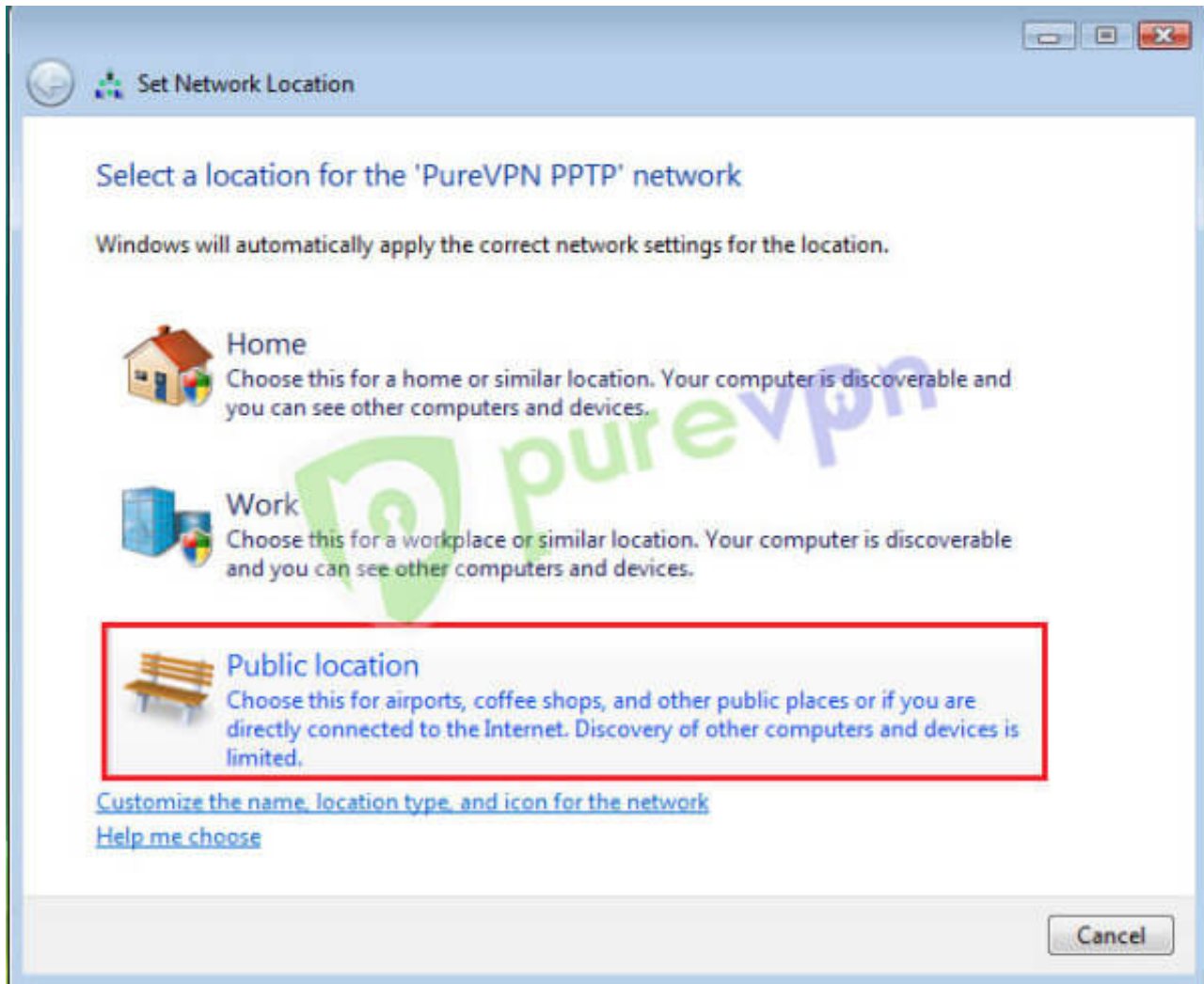
PureVPN Support

Solution of Your Problems

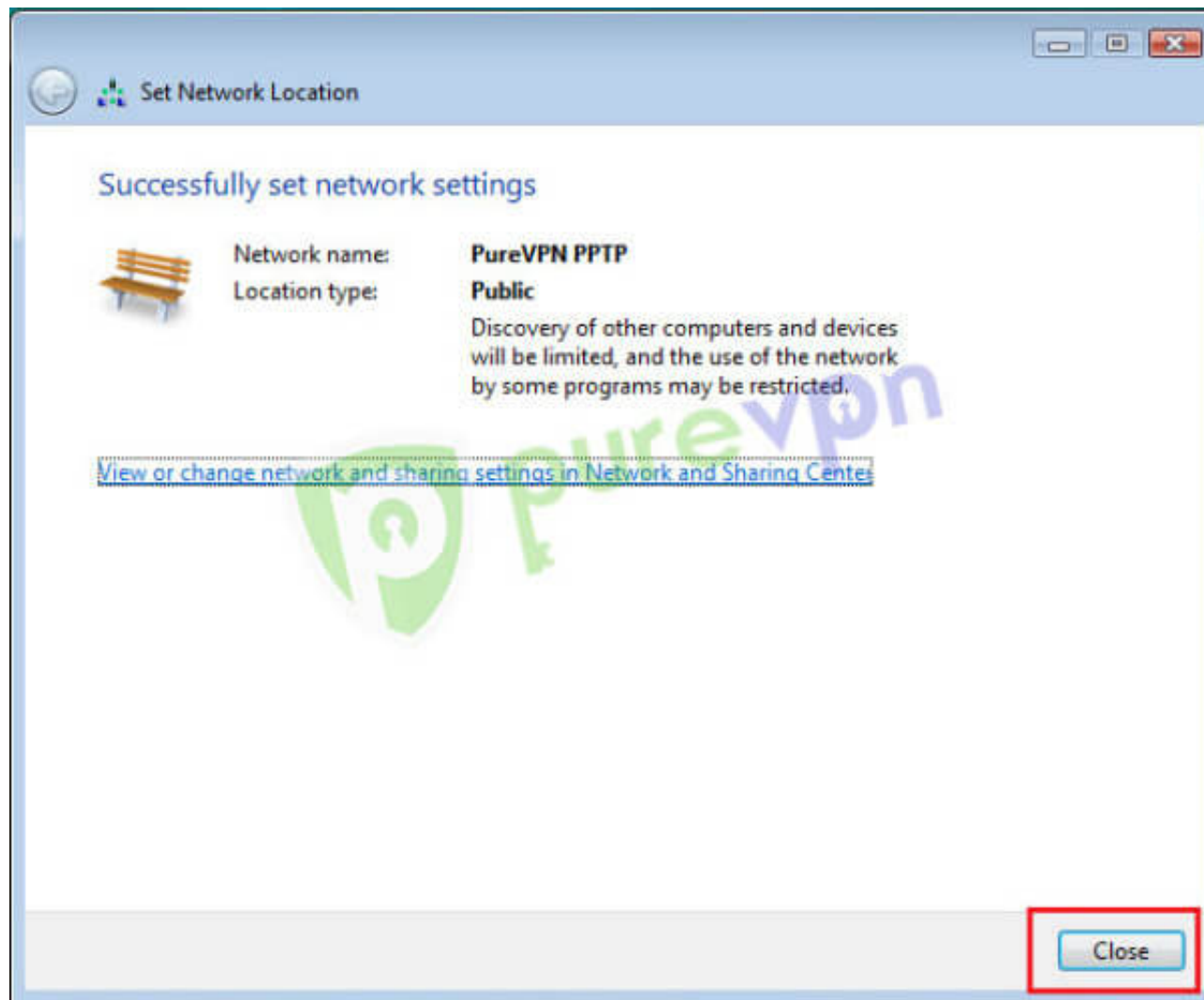
<https://support.purevpn.com>



20 Select Network as **“Public”**



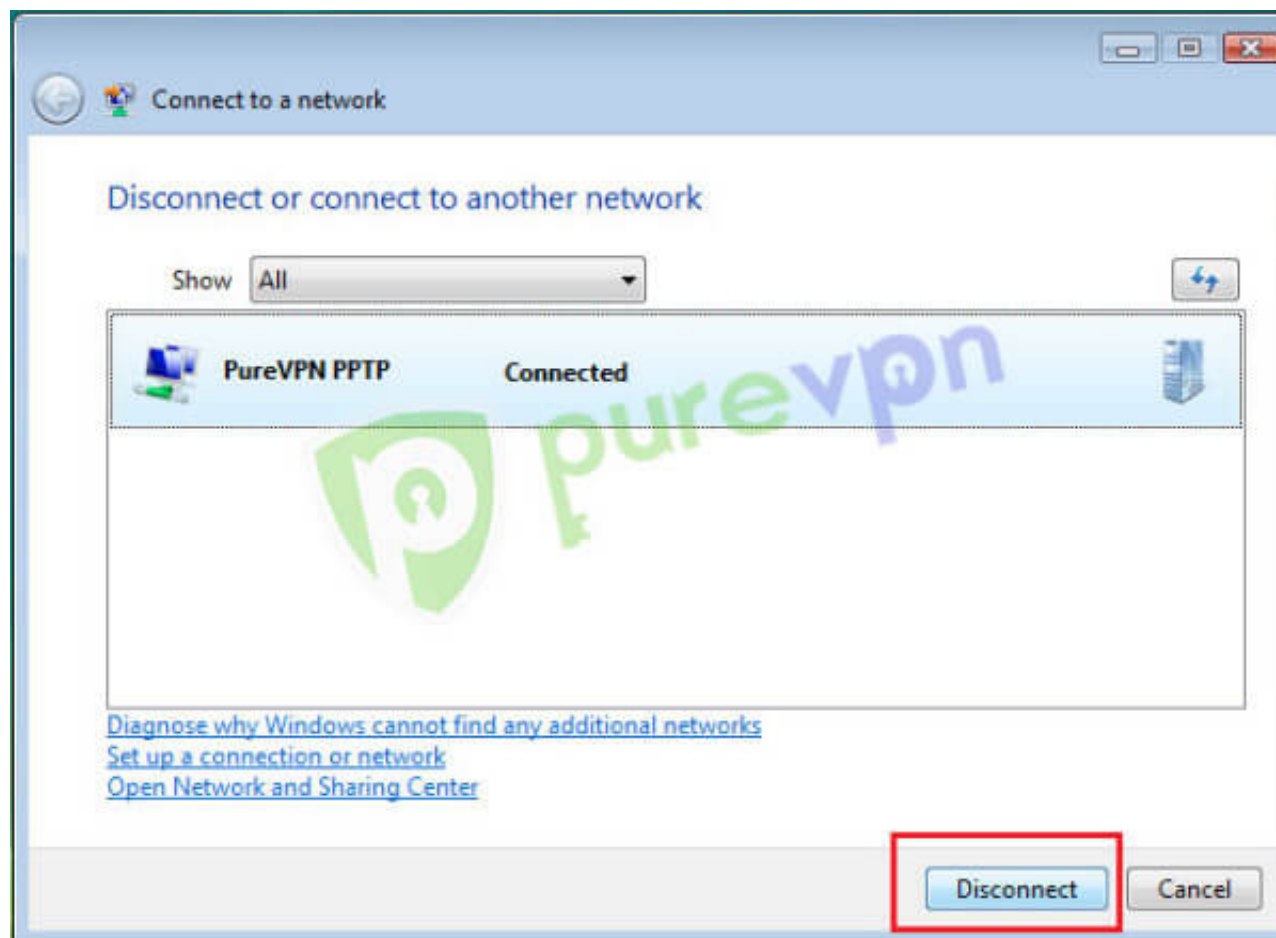
21 Click on Close and **Enjoy the Freedom!!!!!!!**



22 To **disconnect VPN**. Click on **Lan / Wifi icon** from system tray and click on “**Connect or Disconnect**”



23 Click on “Disconnect”



Note: Make sure sure to select “**Required Encryption**” in “**Data Encryption**” drop menu from **VPN Adapter**.

Having Trouble Connecting?

If you're still unable to connect, then please check the most common errors and their solutions

Error 868

[Solution](#)

Error 800, 806, 807, 809

[Solution](#)

Error 720

[Solution](#)

Error 691

[Solution](#)

Error 647

[Solution](#)

Please use the **comment box** for your suggestions & feedback. For additional help, please submit [support ticket](#) with errors and screen shots (if possible) or contact our 24/7 live chat.