

## How to Setup PureVPN Manually on Windows 8 (L2TP)?

### Things to Consider:

Before you begin, please make sure that:

- You have a working internet connection
- Windows Supported Device.
- A Premium PureVPN account (If you haven't bought yet [click here](#) to buy)

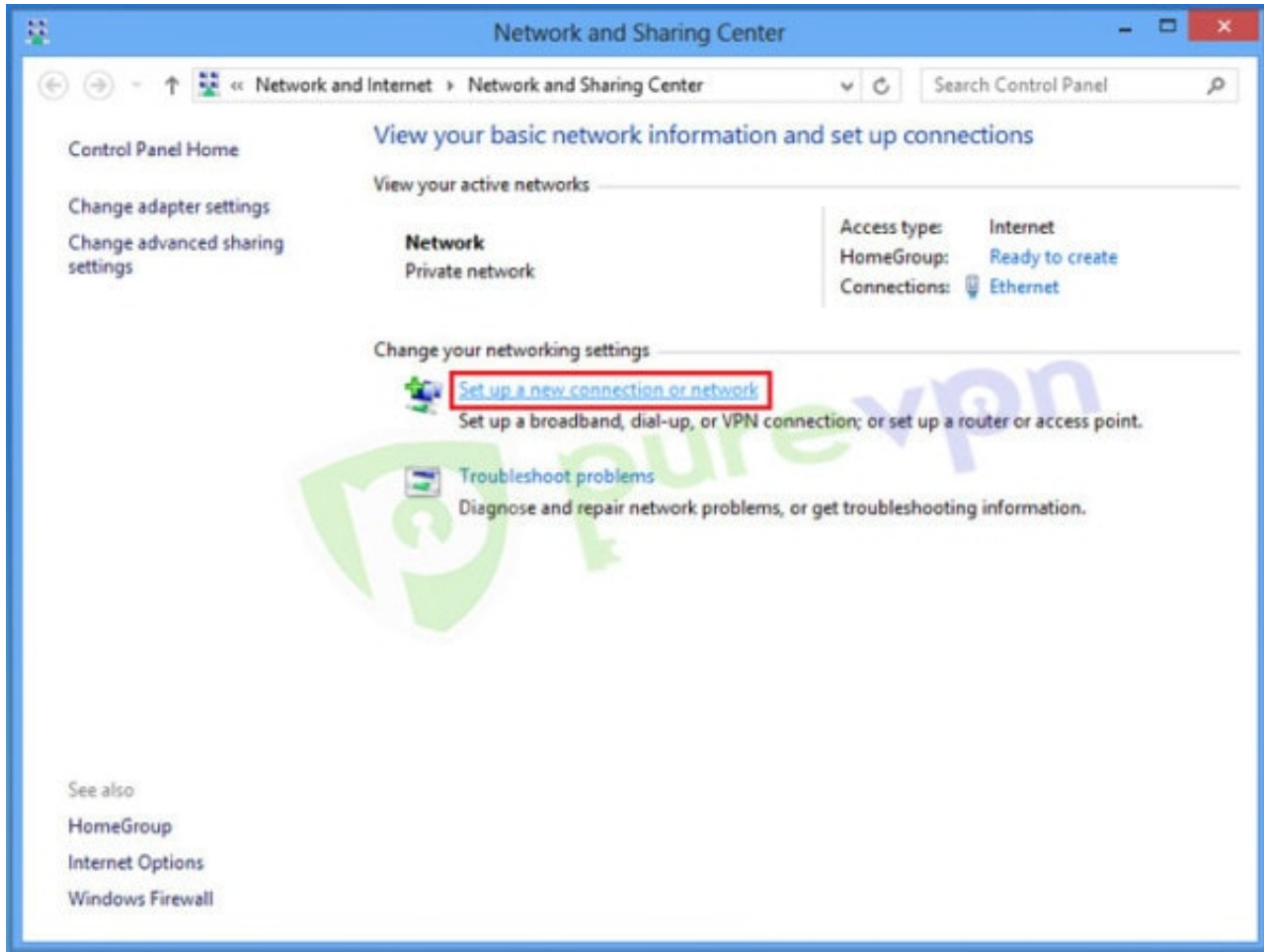
### Follow these simple steps to configure PureVPN manually on Windows 8:

**Note:** We have just launched New PureVPN Windows Software BETA version. If you need guide on BETA version [Click Here](#).

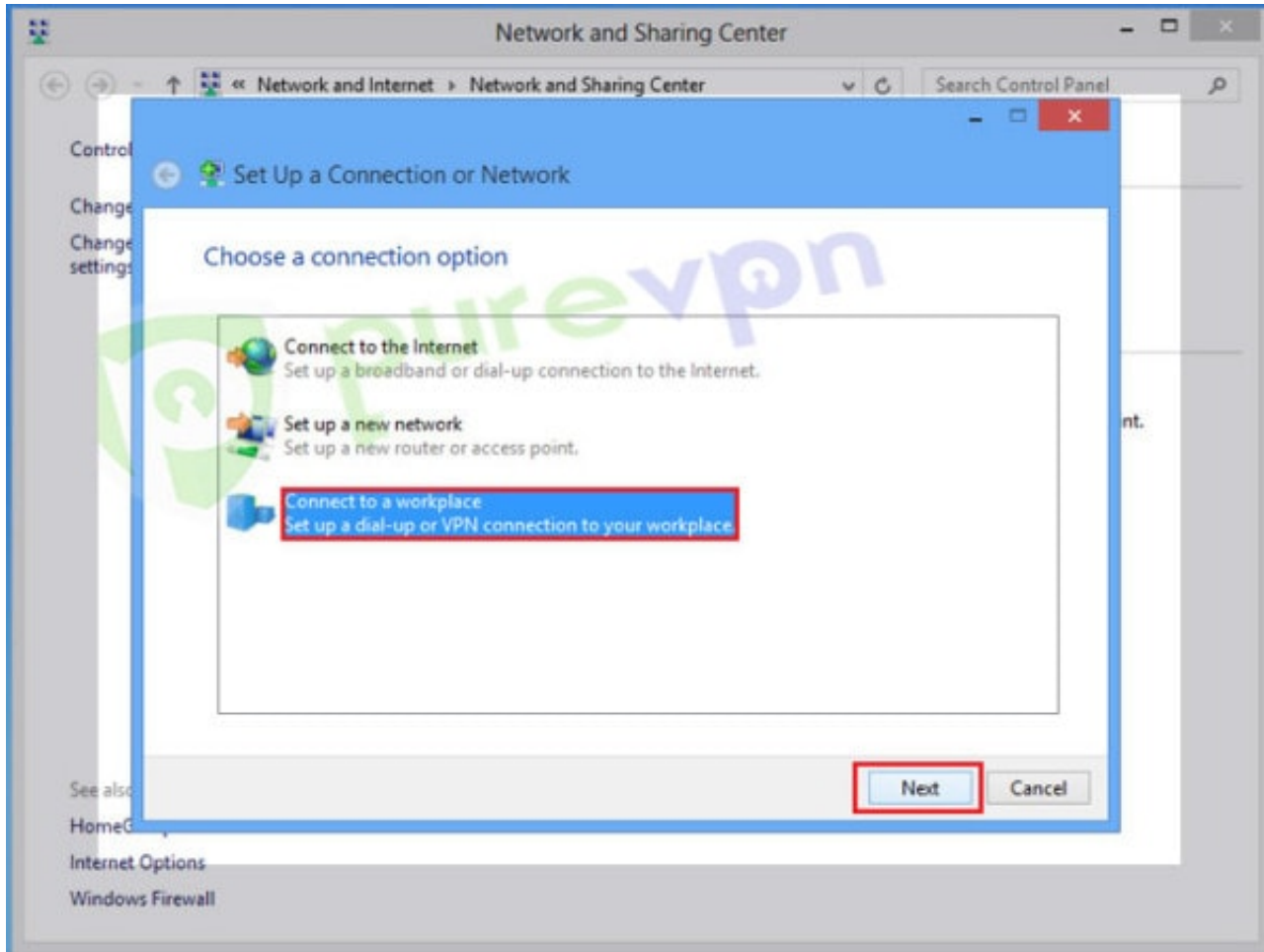
1 Right click on “**Lan / Wifi icon**” from System tray and select “**Open Network and Sharing Center**”



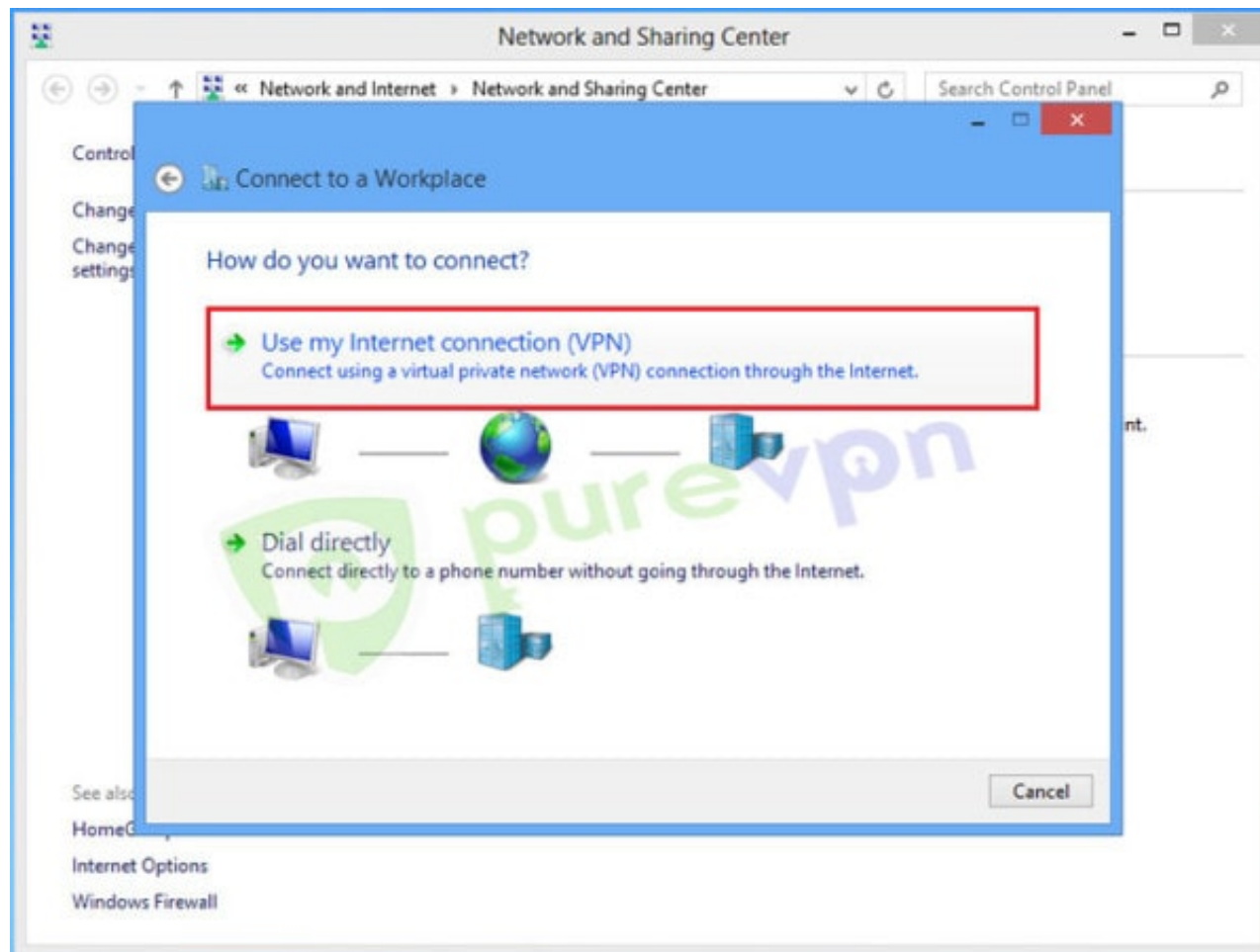
2 Click on “**Set up a new connection or network**”



**3** Select **“Connect to workplace”** and click **“Next”**



**4 Select “Use my Internet connection (VPN)”**



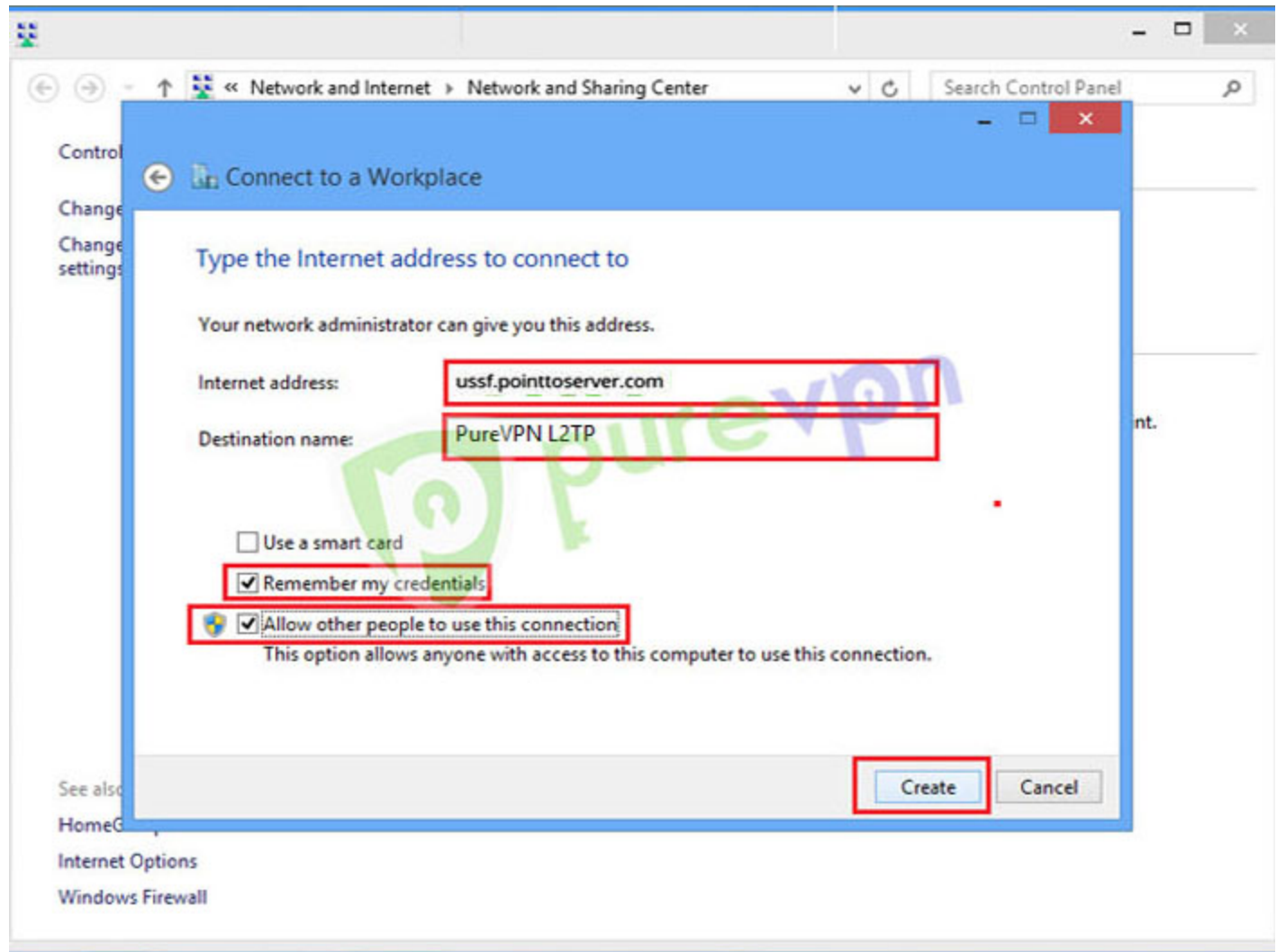
5 Insert the following info:

- Insert **desired server address / IP**. [Click here to get the server list.](#)
- Insert **destination name** as PureVPN L2TP or PureVPN US etc
- Select **“Remember my credentials”**
- Select **“Allow other people to use this connection”**
- Click **“Create”**

## PureVPN Support

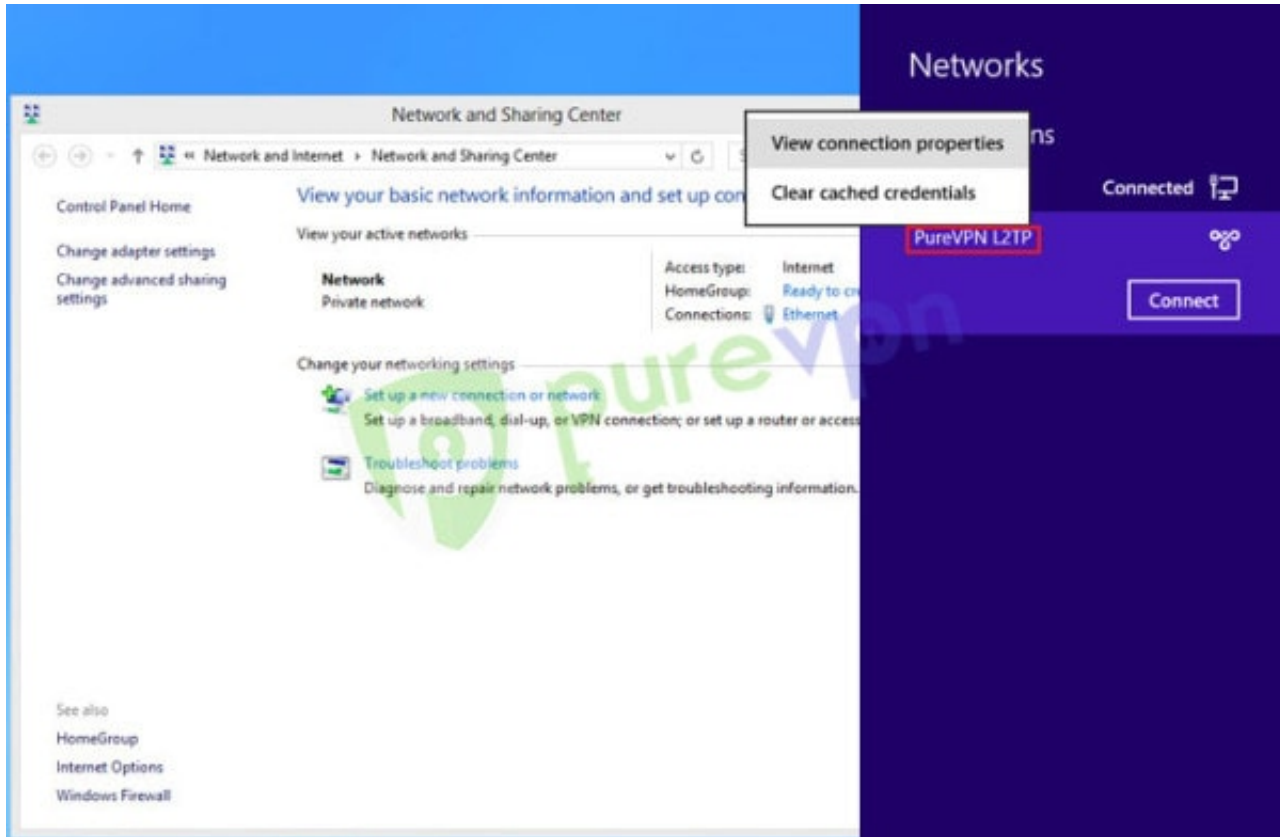
Solution of Your Problems

<https://support.purevpn.com>

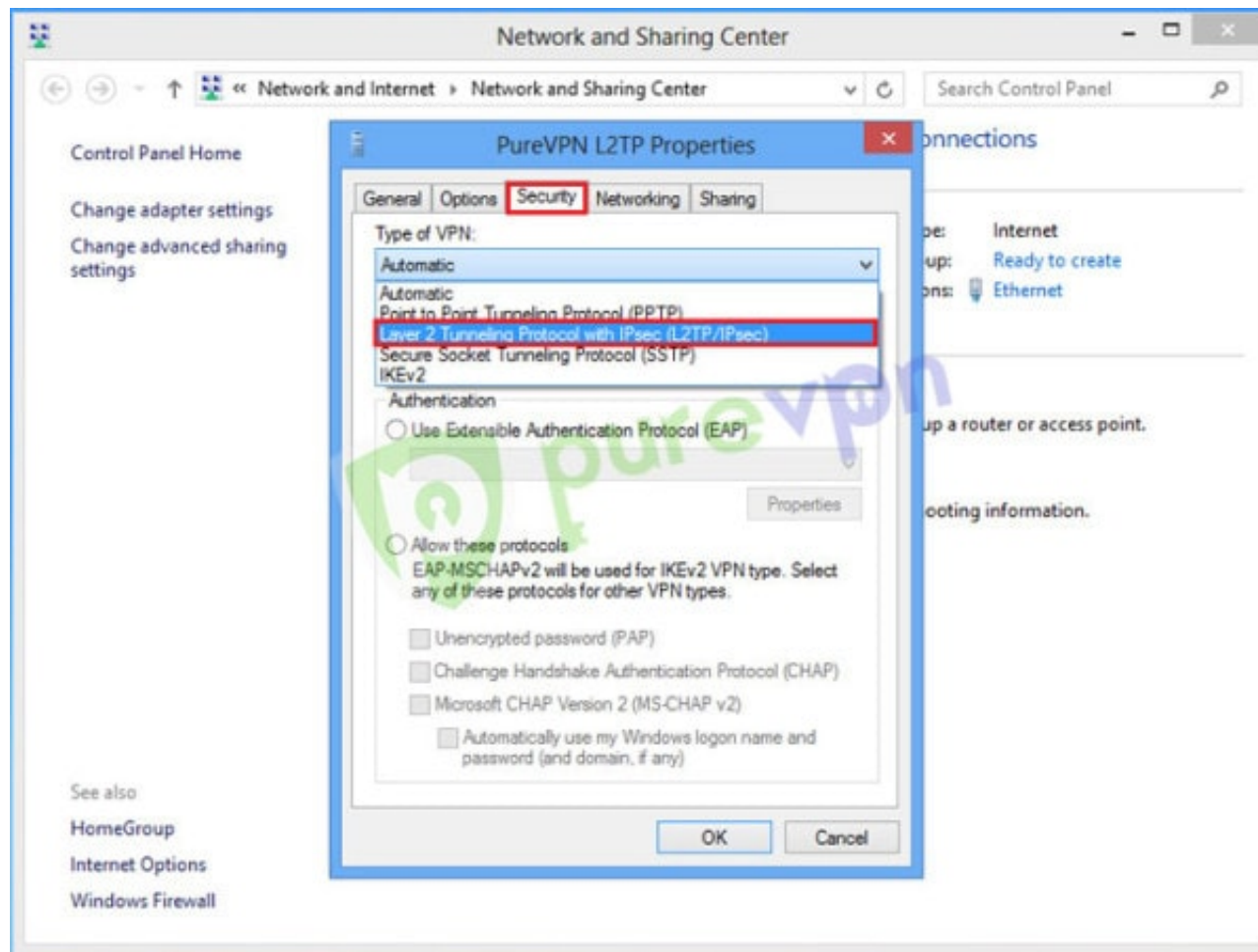


6 Right click on “**PureVPN L2TP**” connection and select “**View connection properties**”

**Note:** If you are on Windows 8.1, then click on “Change Adapter Settings” from the “Network and Sharing Center, right click on PureVPN L2TP connection, select Properties

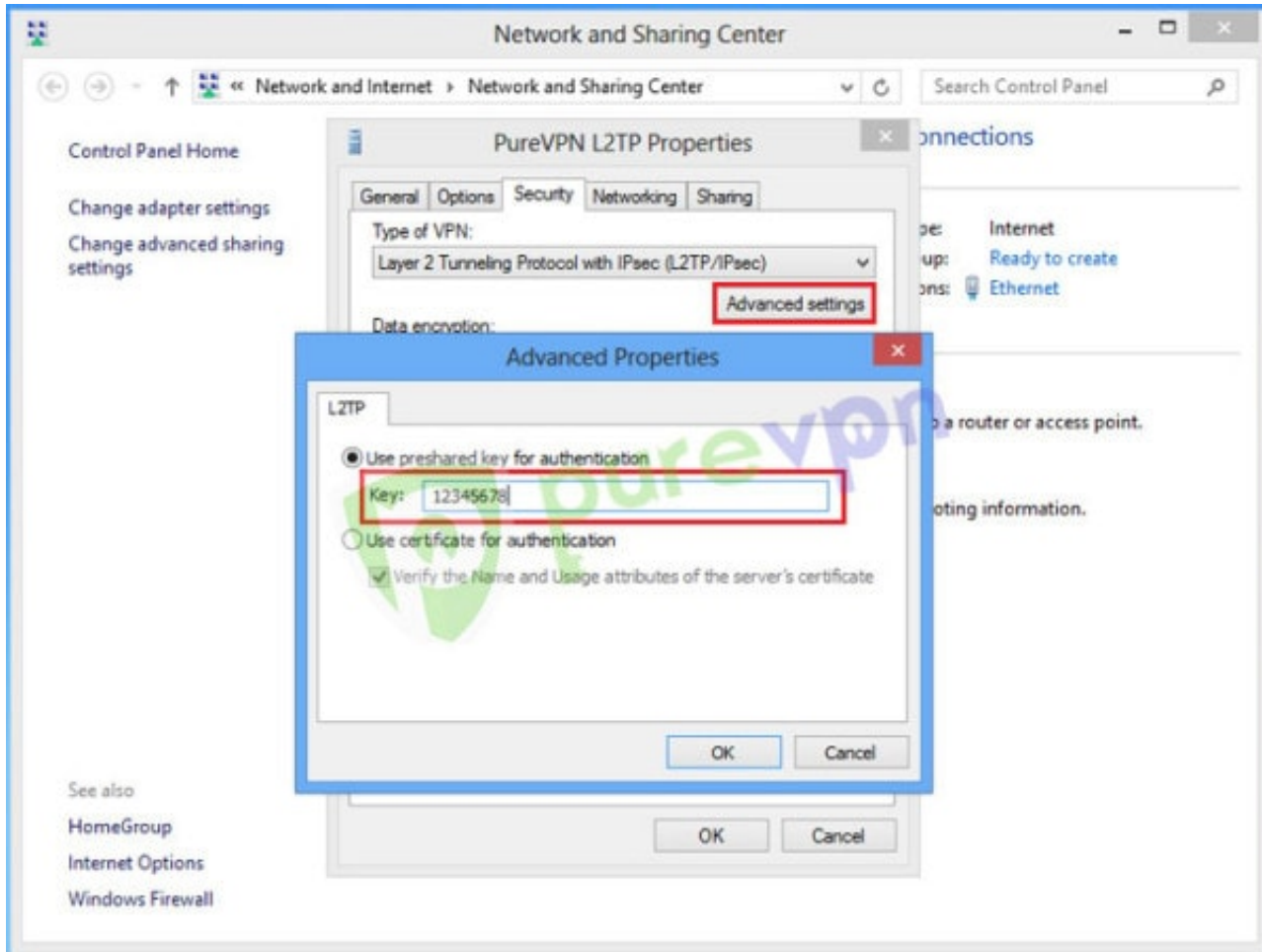


7 Click on **Security** tab and select “**Layer 2 Tunneling protocol with IPsec (L2TP)**”



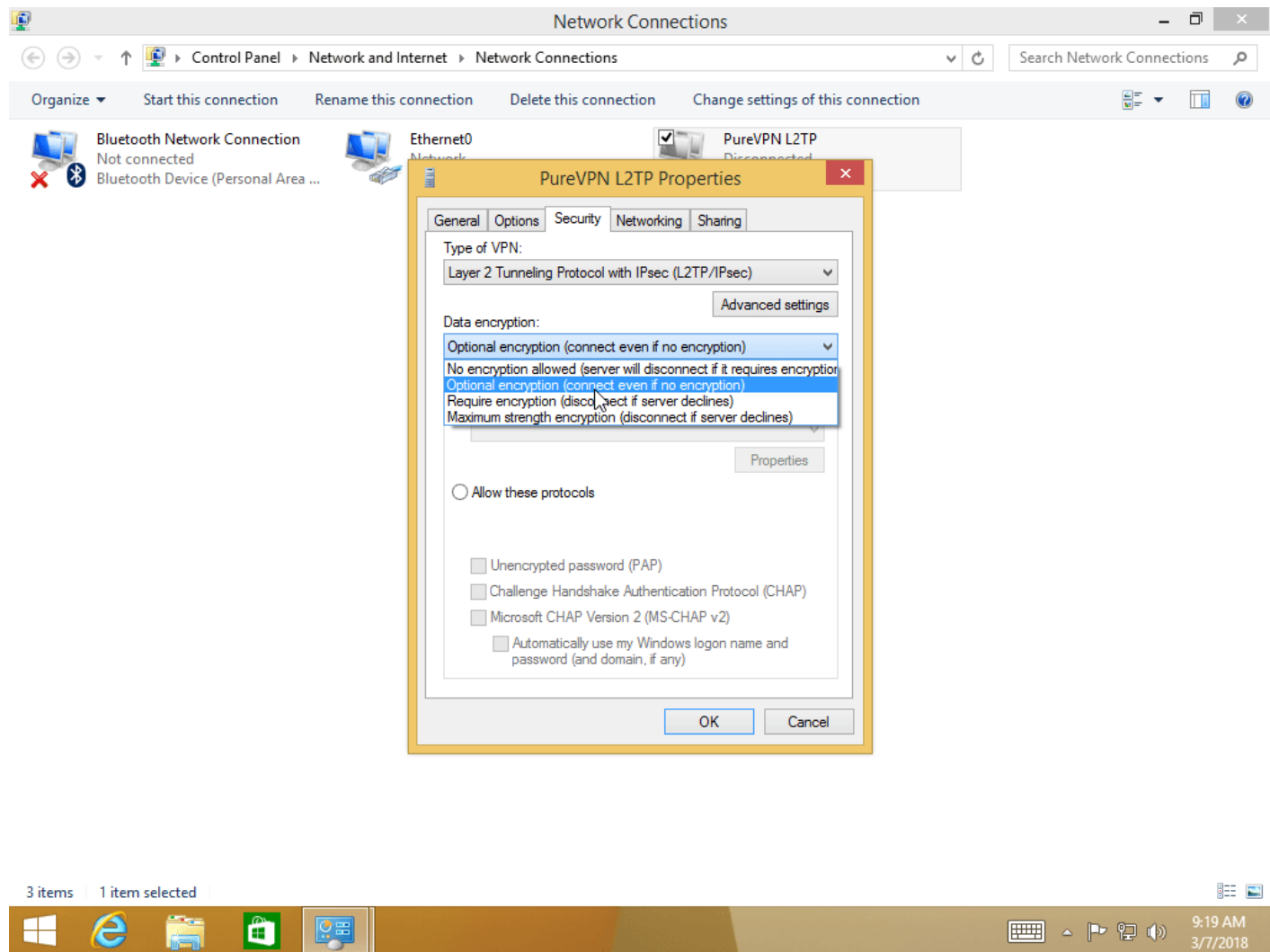
**8** Click on Advance Settings then select **“Use preshared key for authentication”** and insert **“12345678”** in Key box.





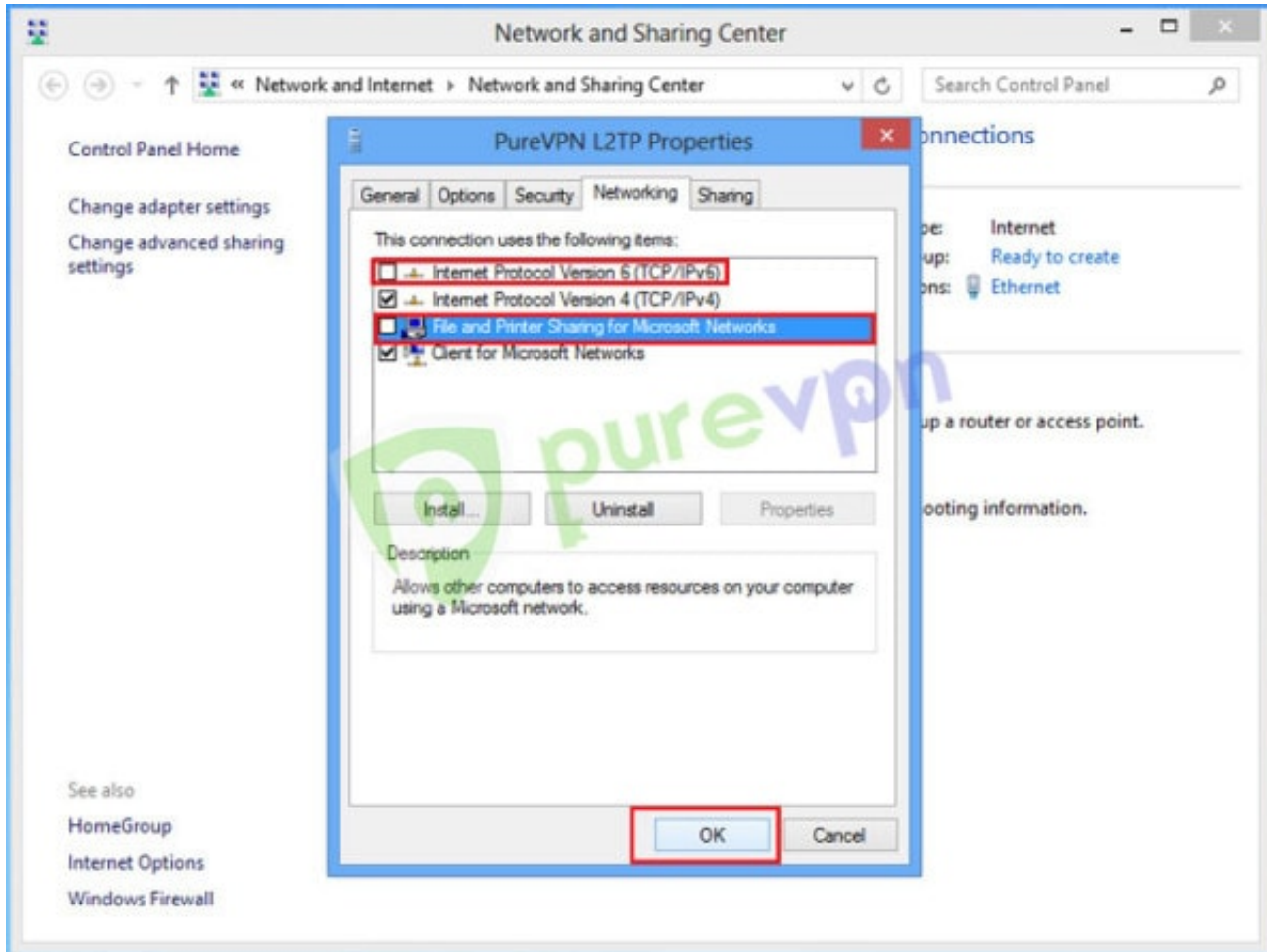
9 Select desired encryption from “**Data encryption**” drop down menu.



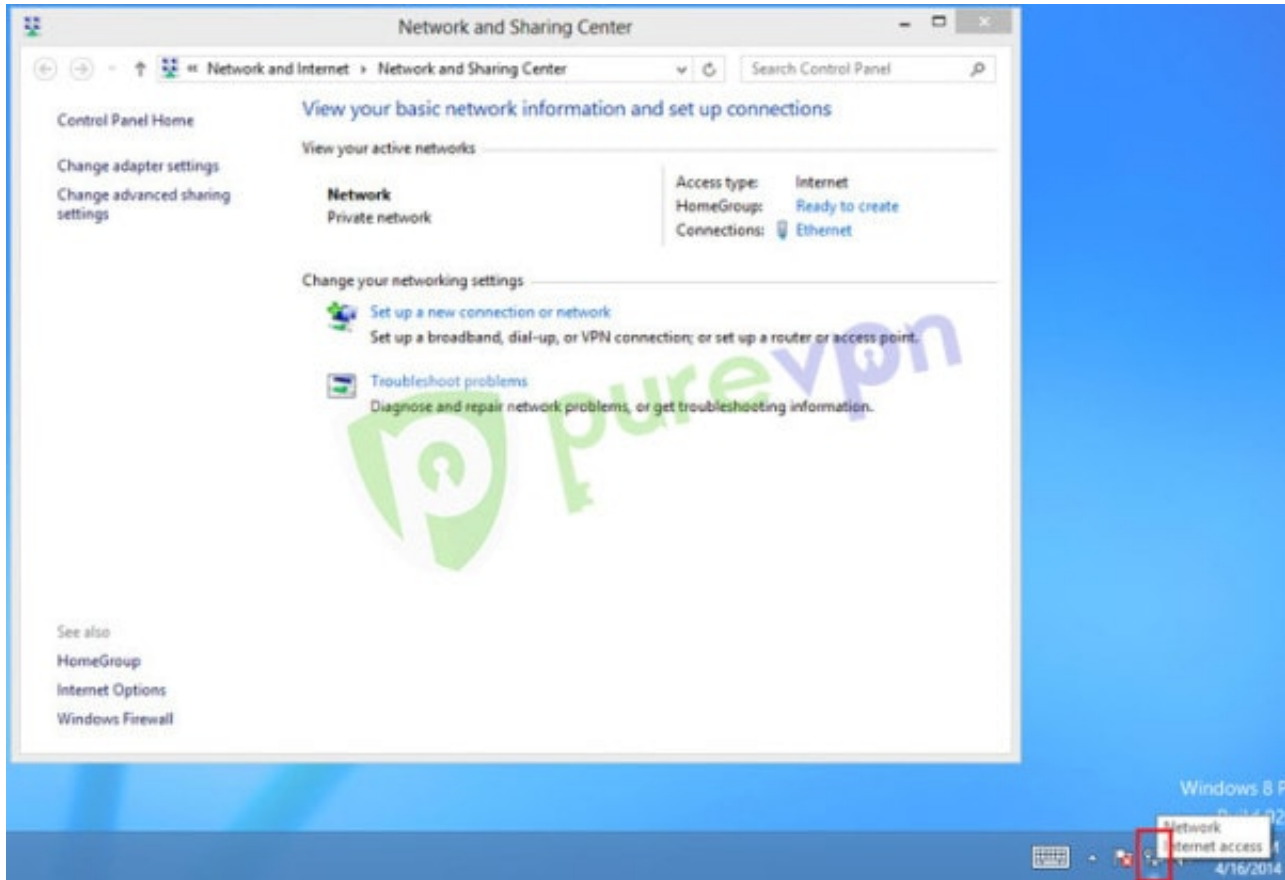


10 Insert the following info:

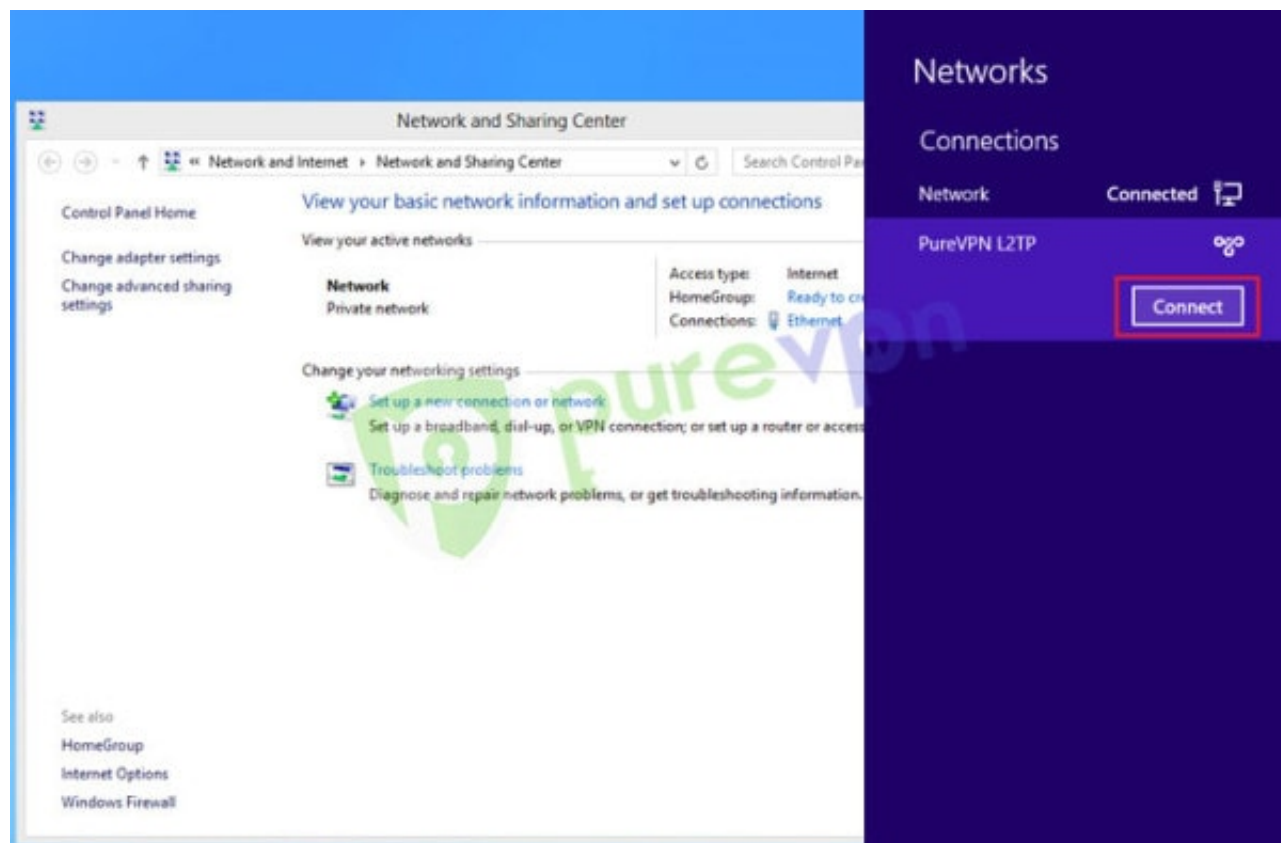
- Click on **“Networking”** tab
- Uncheck **“Internet Protocol Version 6 (TCP/IPv6)”** and **“File and Printer Sharing for Microsoft Networks”** then
- Click **“OK”**



**11** Click on **Wifi / Lan icon** from System tray

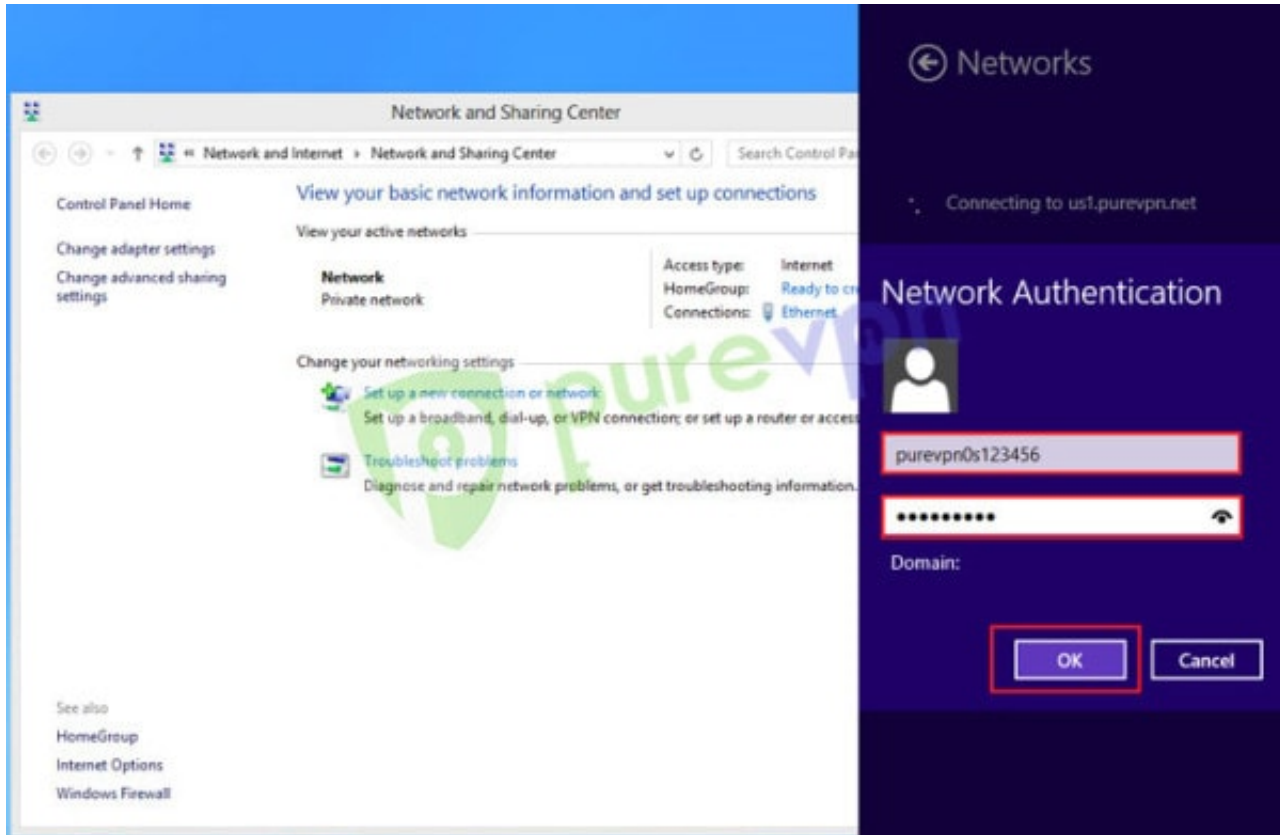


**12** Click on **PureVPN L2TP** connection and click **“Connect”**

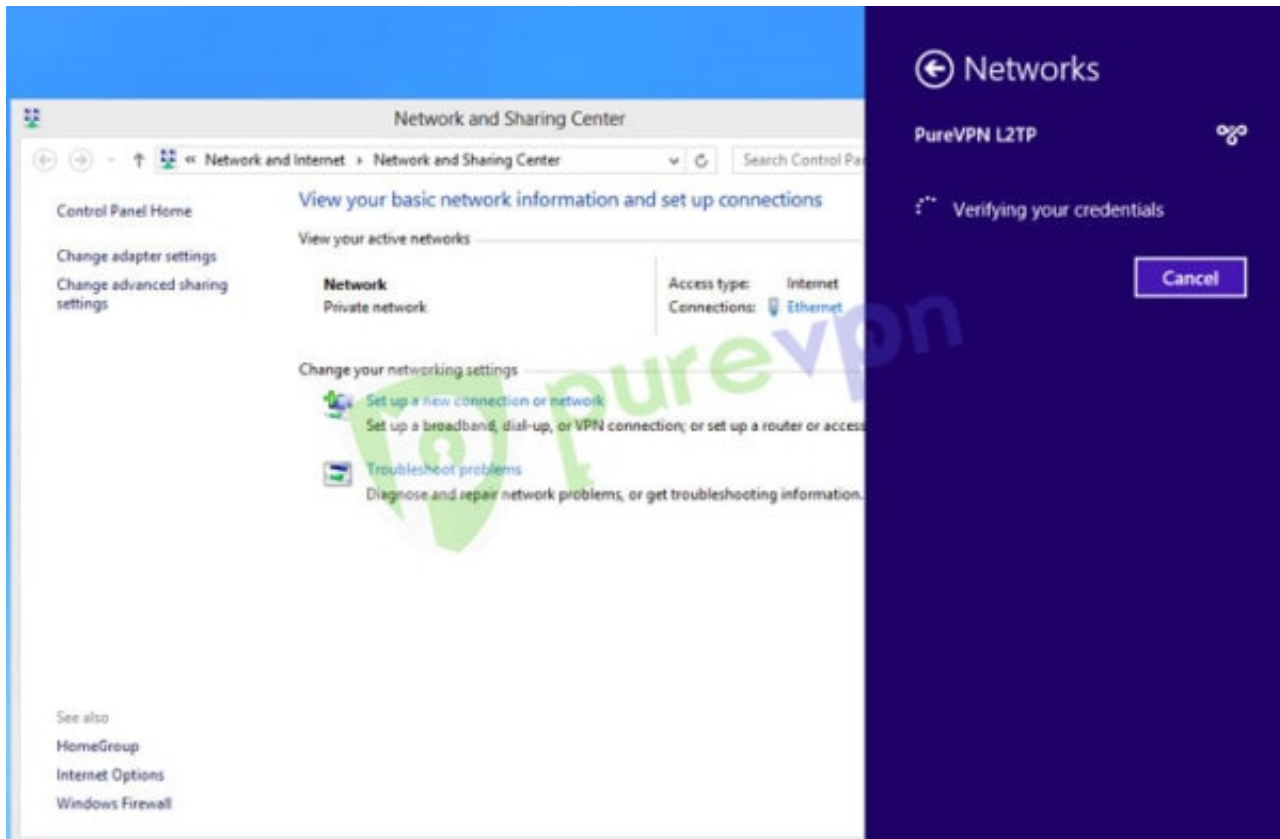


**13** Insert your **Username and Password** provided by PureVPN then Click **“OK”**

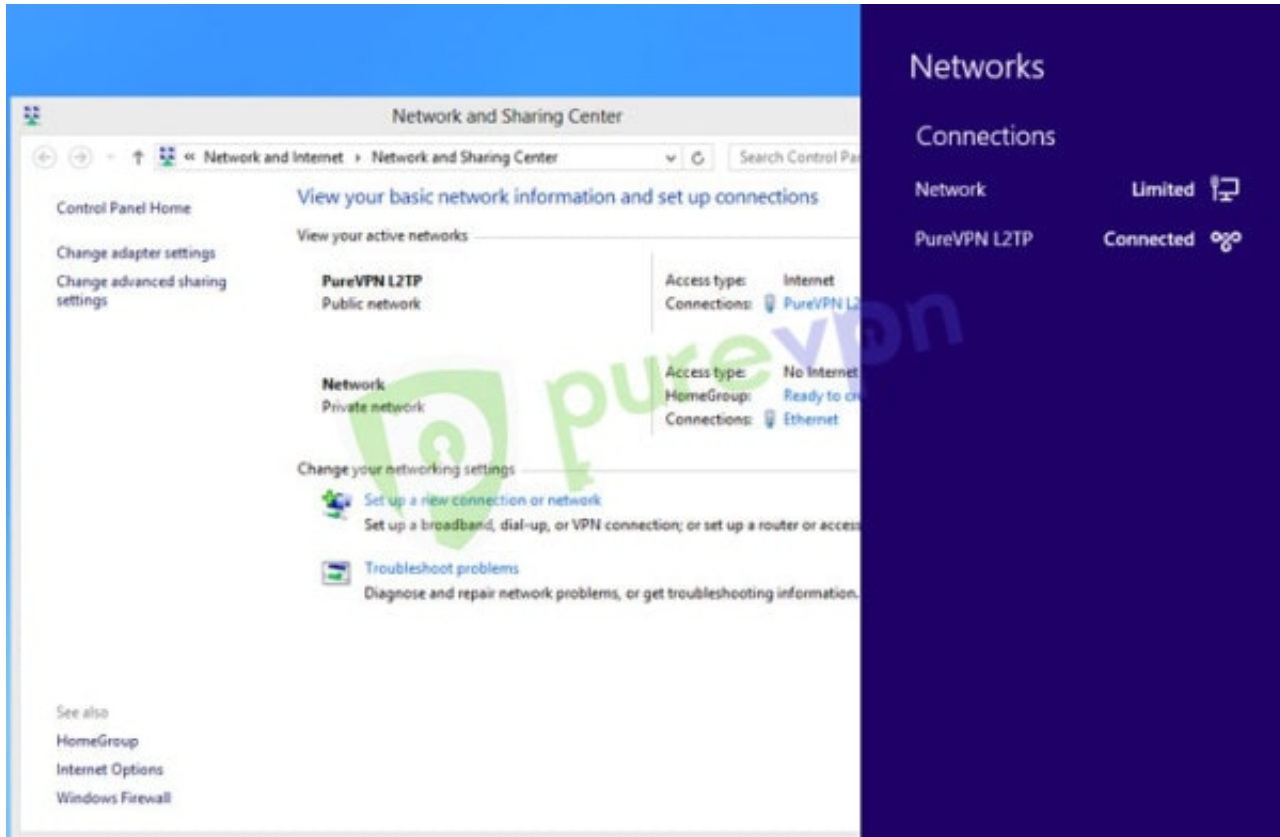
**Important Note:** Please always remember your PureVPN username & password is different from your Website Member Area email address & Password.



**14** VPN connection will establish after verifying account details.



15 You are connected now.

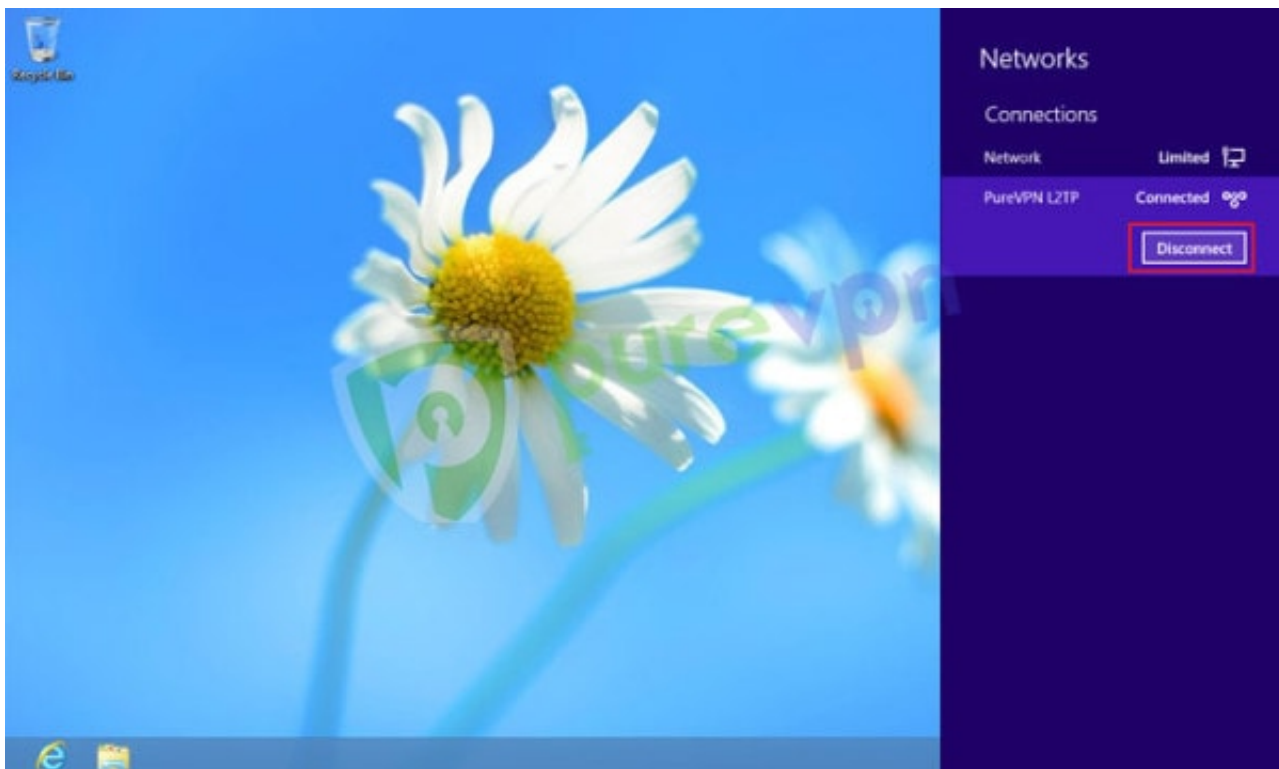


**16** To disconnect VPN, click on **Lan / Wifi icon** from System tray





17 Click on VPN connection and click “**Disconnect**”



## Having Trouble Connecting?

If you're still unable to connect, then please check the most common errors and their solutions

### **Error 868**

[Solution](#)

### **Error 800, 806, 807, 809**

[Solution](#)

### **Error 720**

[Solution](#)

### **Error 691**

[Solution](#)

### **Error 647**

[Solution](#)

Please use the **comment box** for your suggestions & feedback. For additional help, please submit [support ticket](#) with errors and screen shots (if possible) **OR** Contact our 24/7 live chat.