

How to Setup PureVPN Manually on Windows 8 (L2TP)?

Looking to setup L2TP on Windows 8? Well here is an easy to follow guide that will help you get started with manual L2TP connection on Windows 8.

Things to Consider:

1. You have a working internet connection
2. Windows Supported Device.
3. A Premium PureVPN account (If you haven't bought yet click ?[here](#) to buy)

Find your VPN credentials for manual configuration.

To find your VPN credentials log into the PureVPN members area. Click ? [here](#) to visit member area.

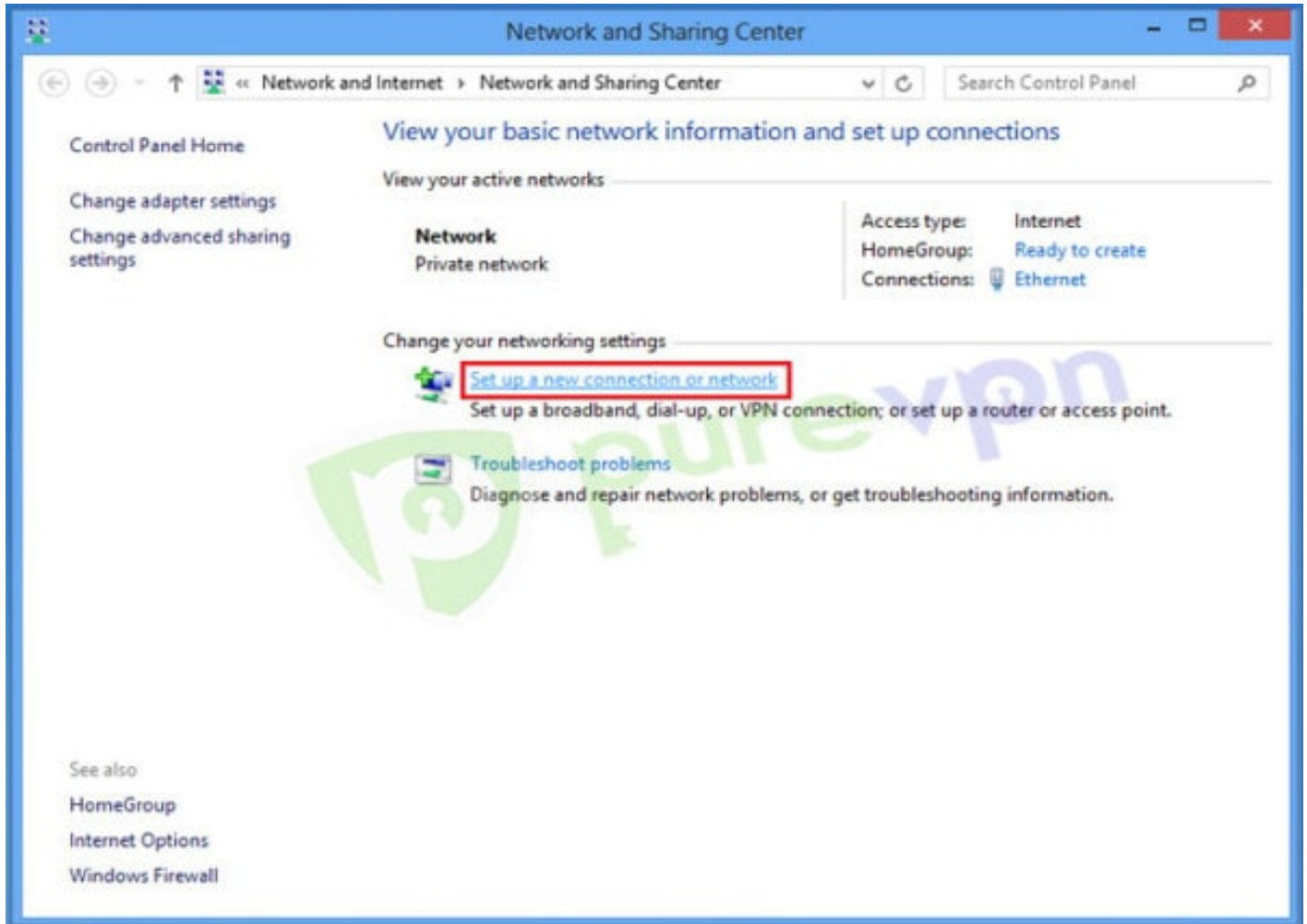
- Login to the **Member area** using your PureVPN registered email address and password.

How to connect PureVPN manually on Windows 8.

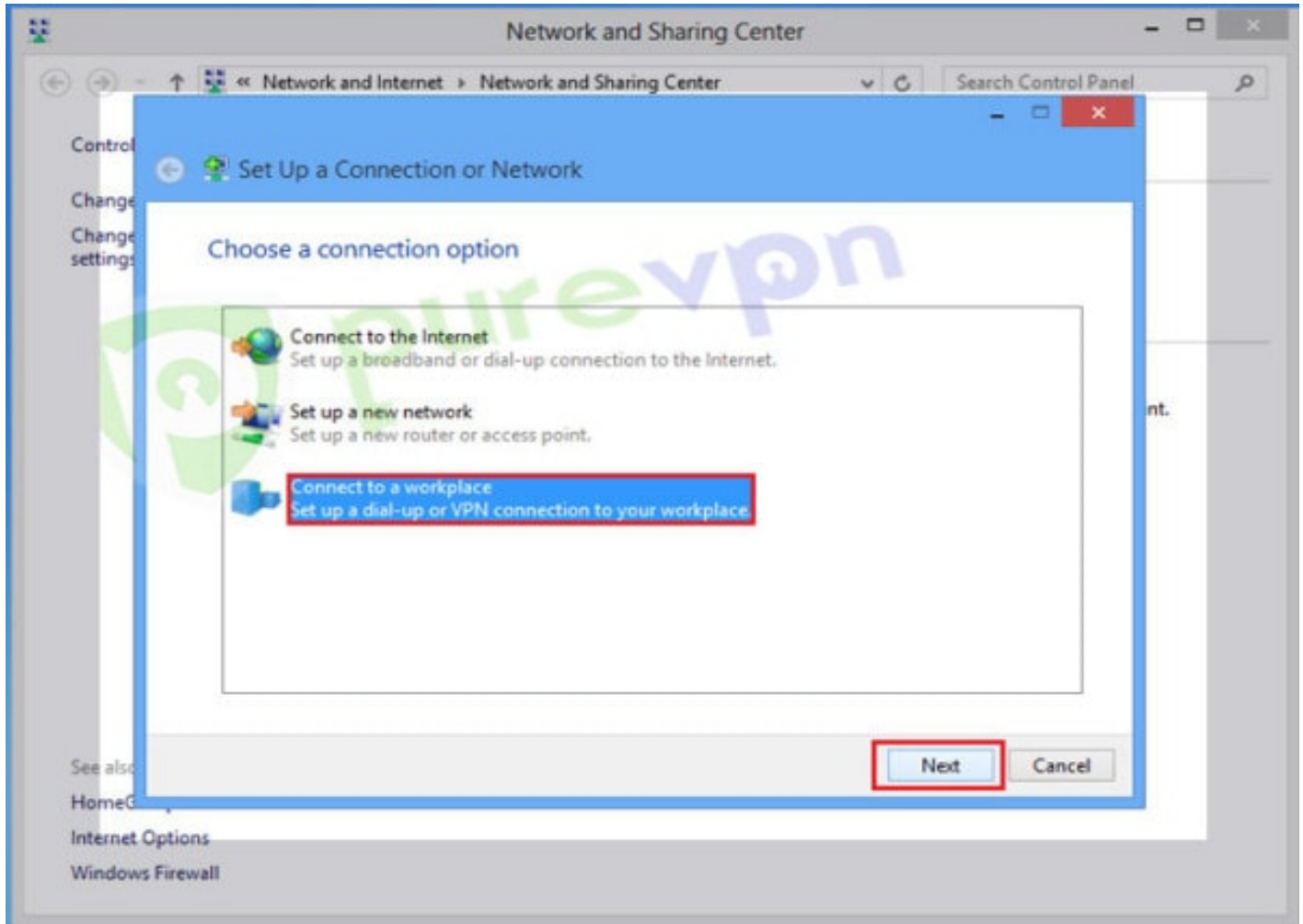
- Right-click **Lan/ Wifi icon** from System tray and select **Open Network and Sharing center**



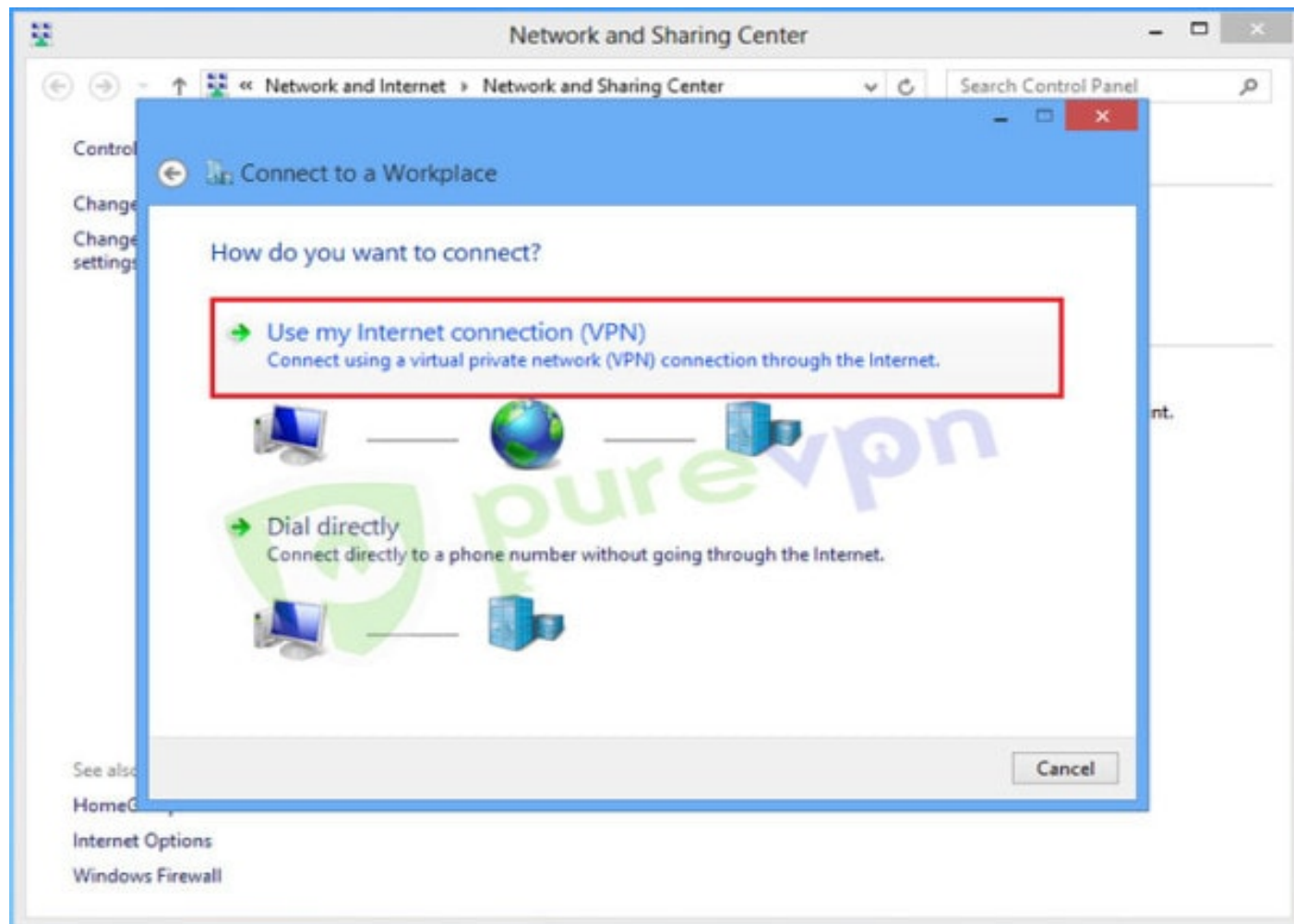
- Click **Set up a new connection or network**



- Select **Connect to workplace** and click **Next**



- Select **Use my Internet connection (VPN)**

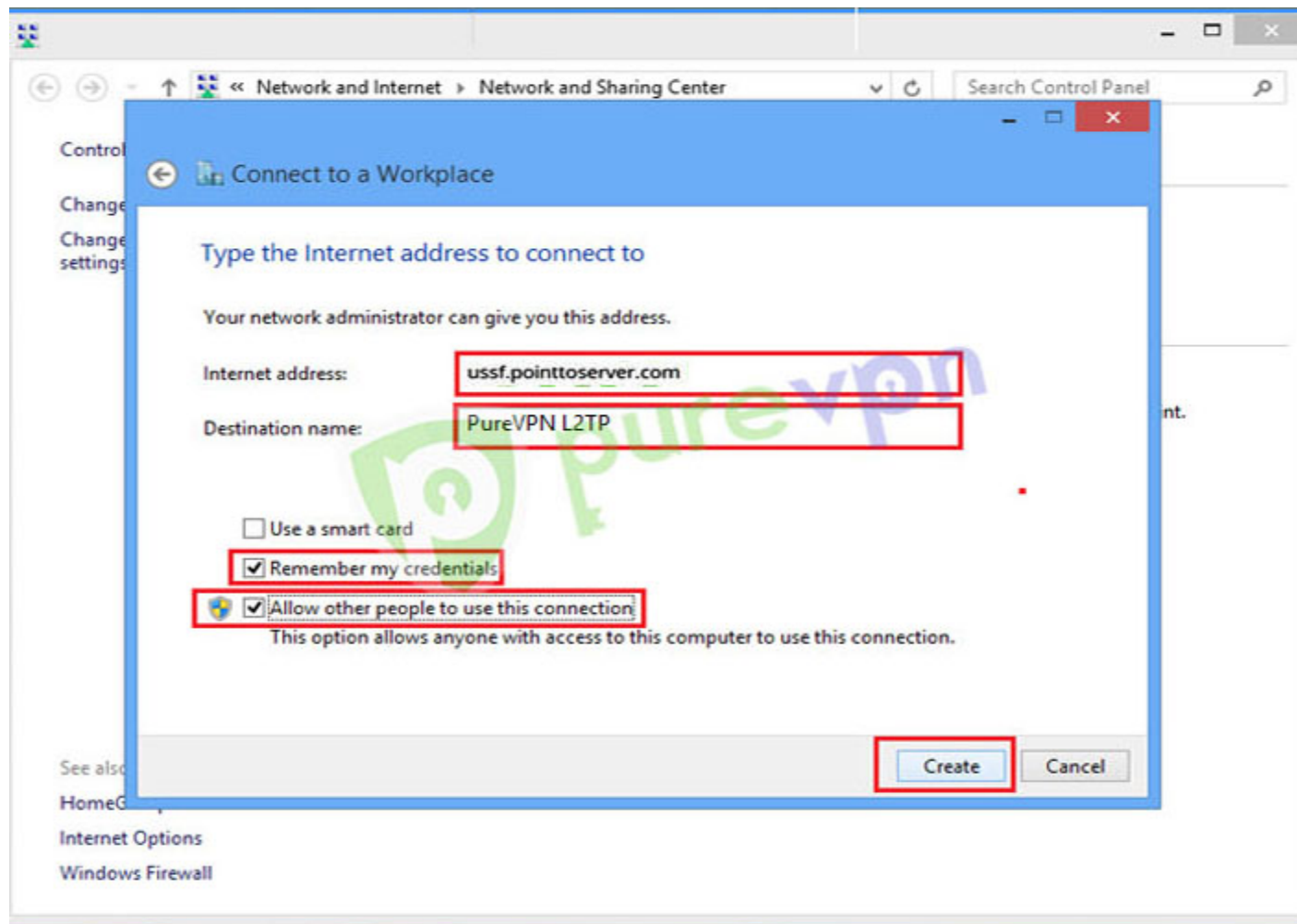


- **Insert the following info:**

- Enter the server address. You can use one of the servers mentioned below ?

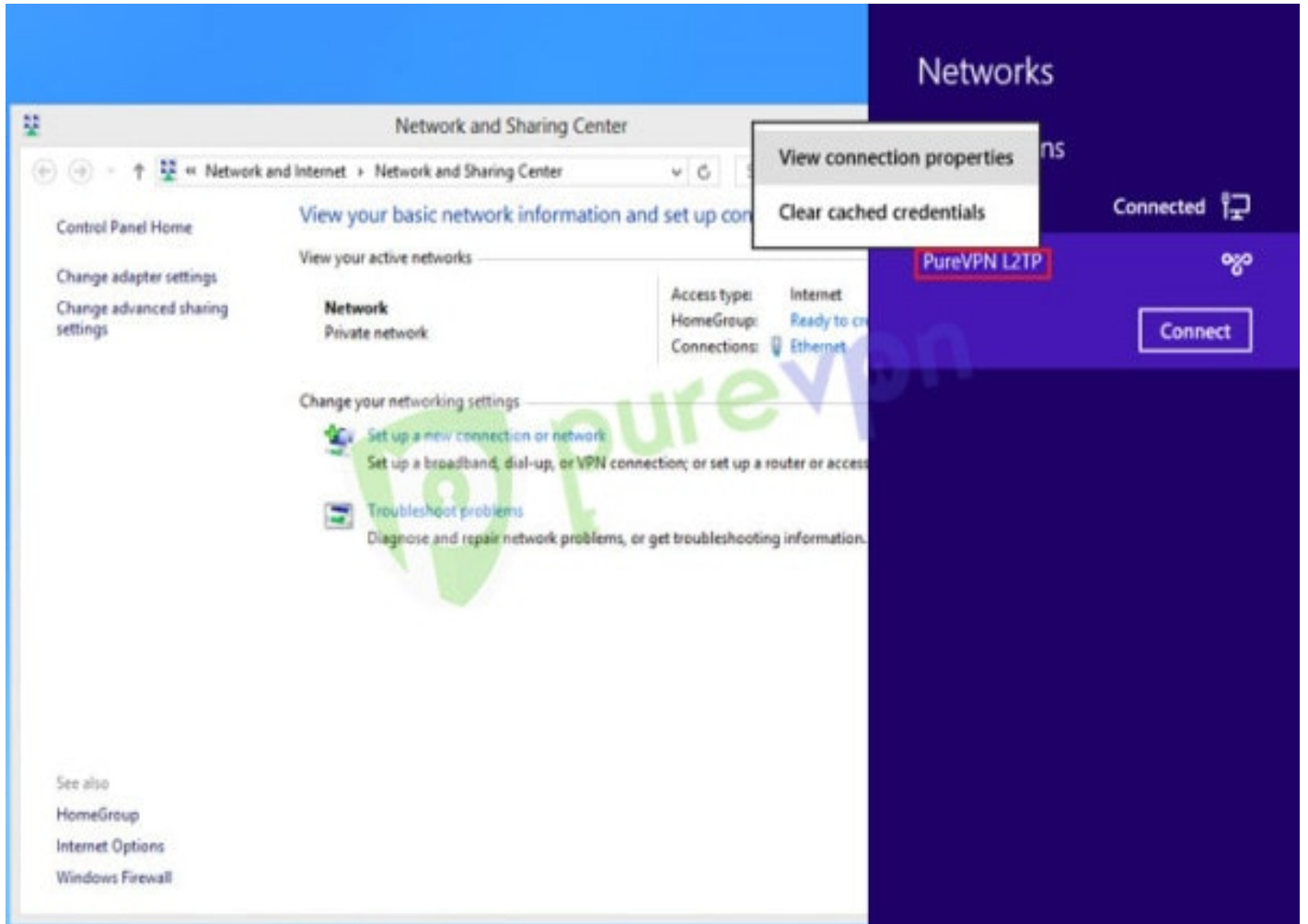
1. Germany: de1.pointtoserver.com
2. Netherlands: nl1.pointtoserver.com
3. United Kingdom: ukl1.pointtoserver.com
4. United States: usil1.pointtoserver.com
5. United States: ustx1.pointtoserver.com
6. United States: usca1.pointtoserver.com
7. United States: usfl1.pointtoserver.com
8. United States: usny1.pointtoserver.com
9. United States: uswdc1.pointtoserver.com

- Insert destination name as PureVPN L2TP or PureVPN US etc
- Select Remember my credentials
- Select Allow other people to use this connection
- Click **Create**

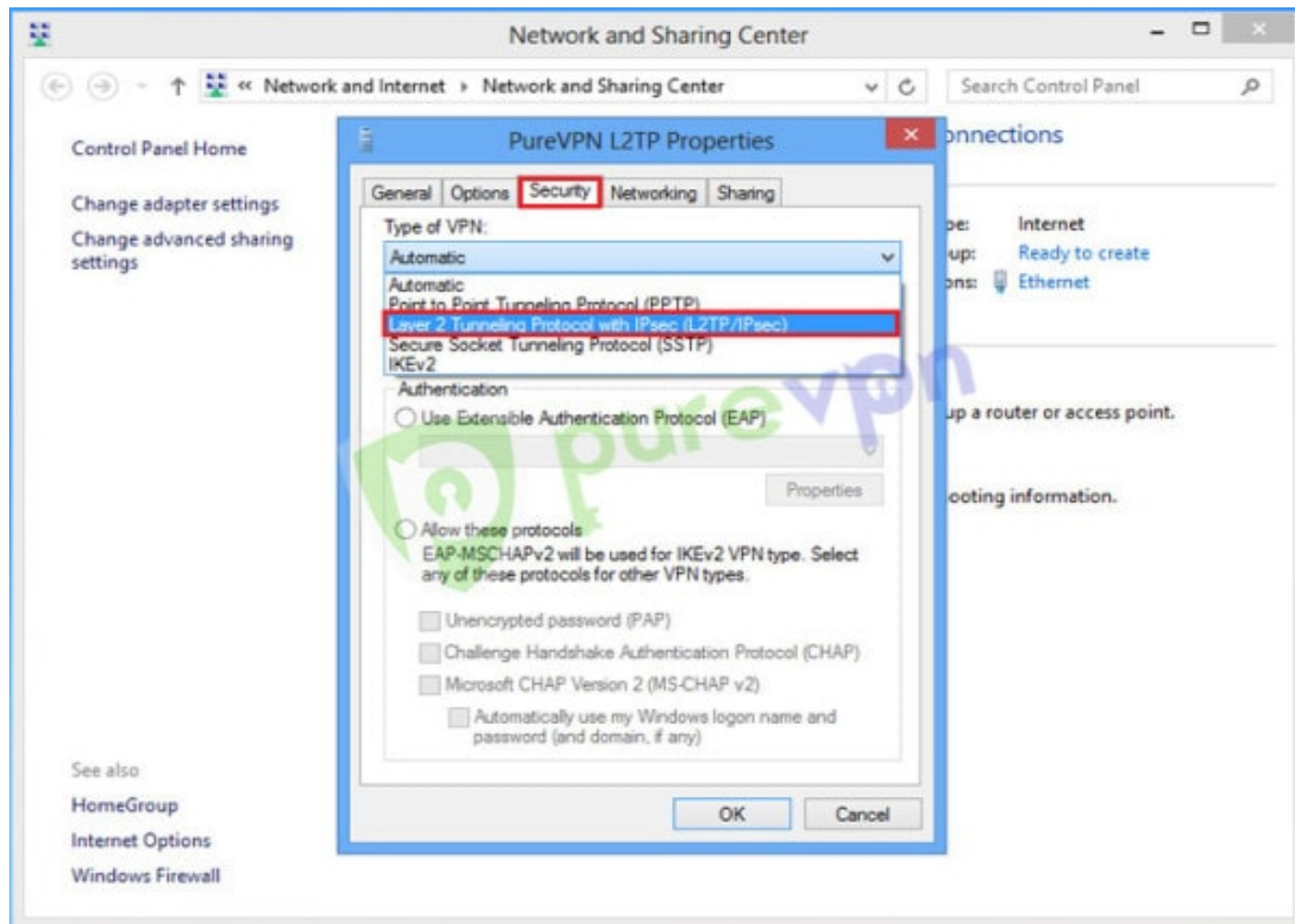


- Right click **PureVPN L2TP** connection and select View **connection properties**

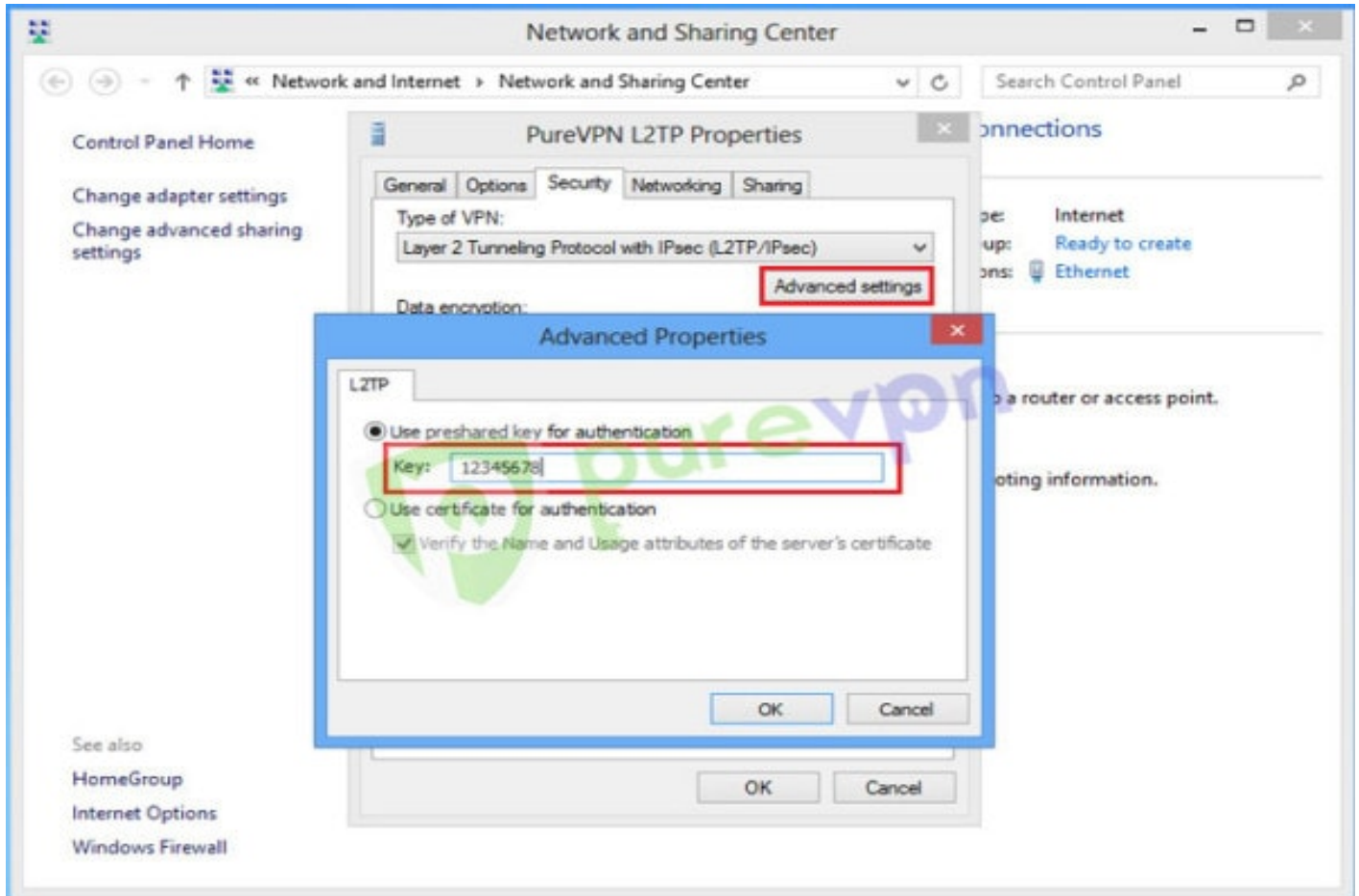
If you are on Windows 8.1, then click on Change Adapter Settings from the Network and Sharing Center, right click PureVPN L2TP connection, select Properties



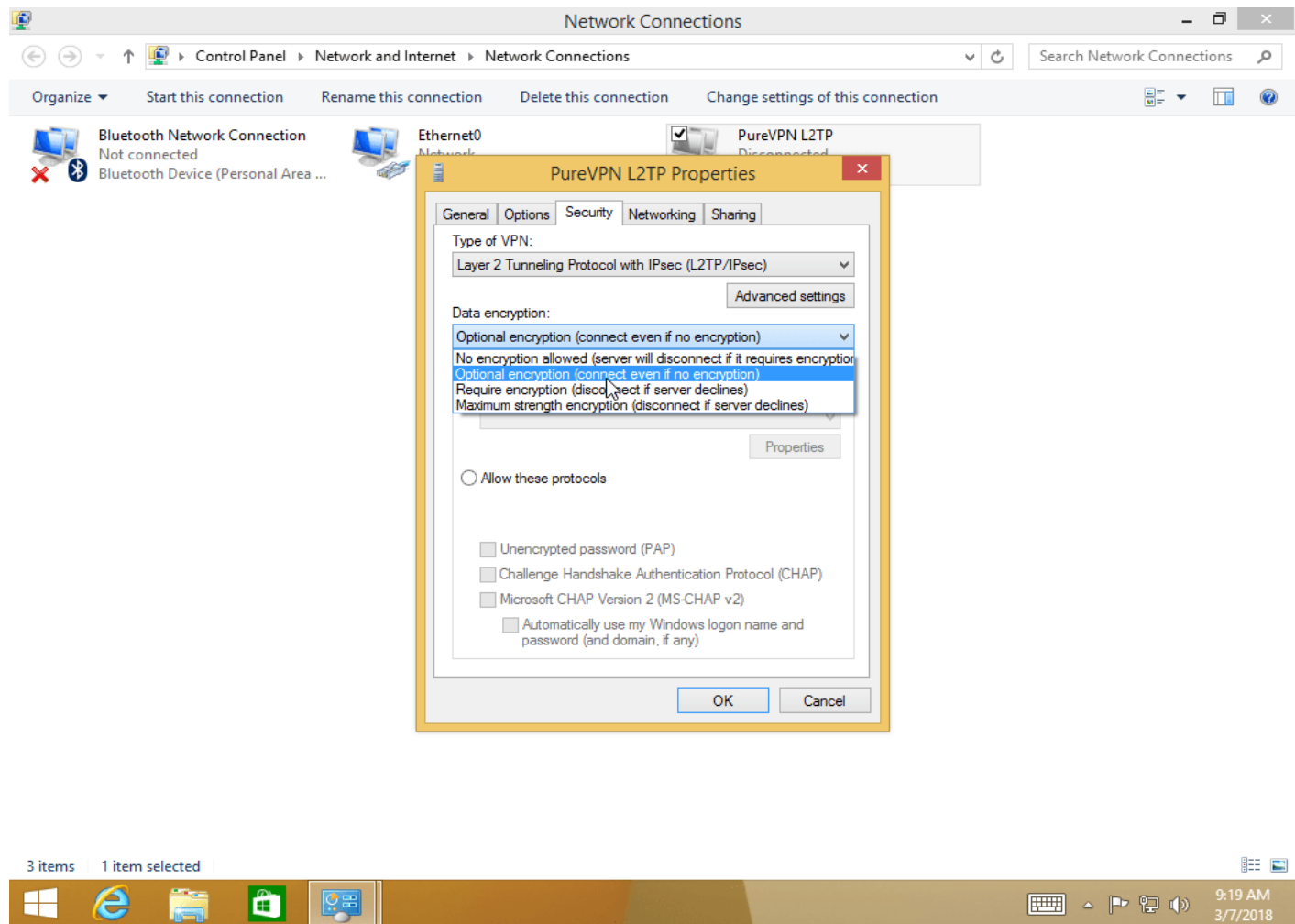
- Click **Security tab** and select **Layer 2 Tunneling protocol with IPsec (L2TP)**



- Click **Advance Settings** then select **Use preshared key** for authentication and insert 12345678 in Key box.

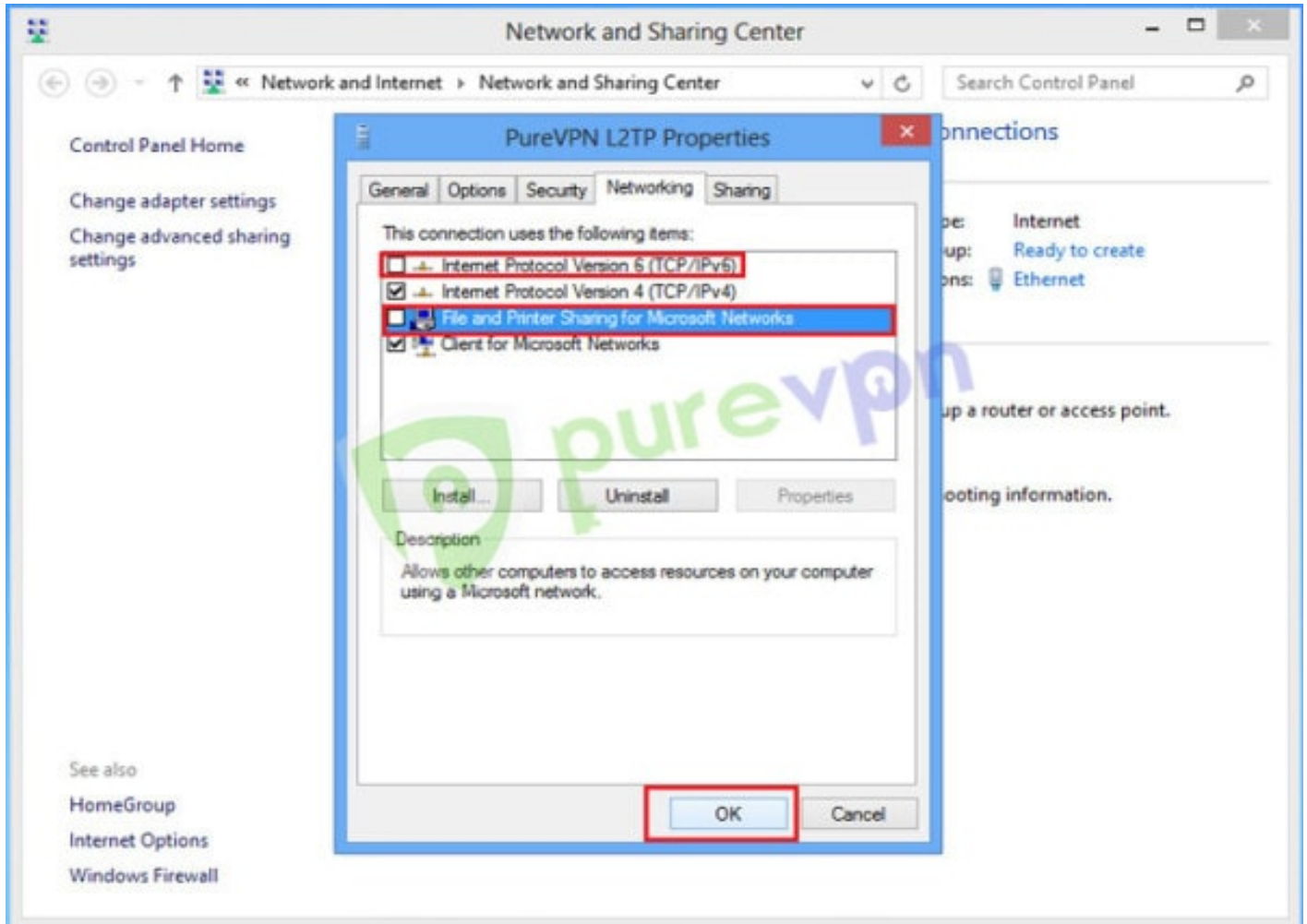


- Select desired encryption from Data encryption drop down menu.

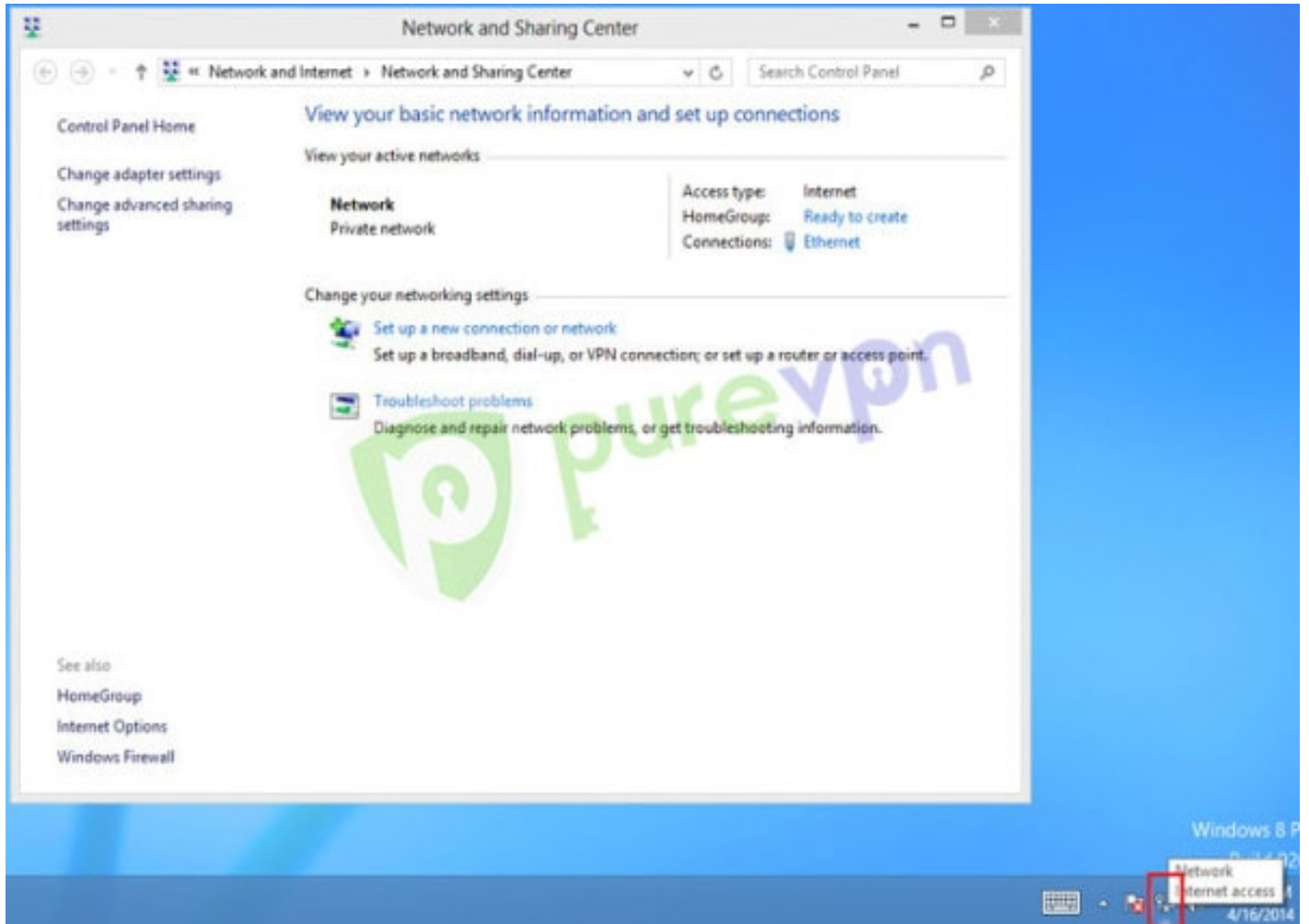


- **Insert the following info:**

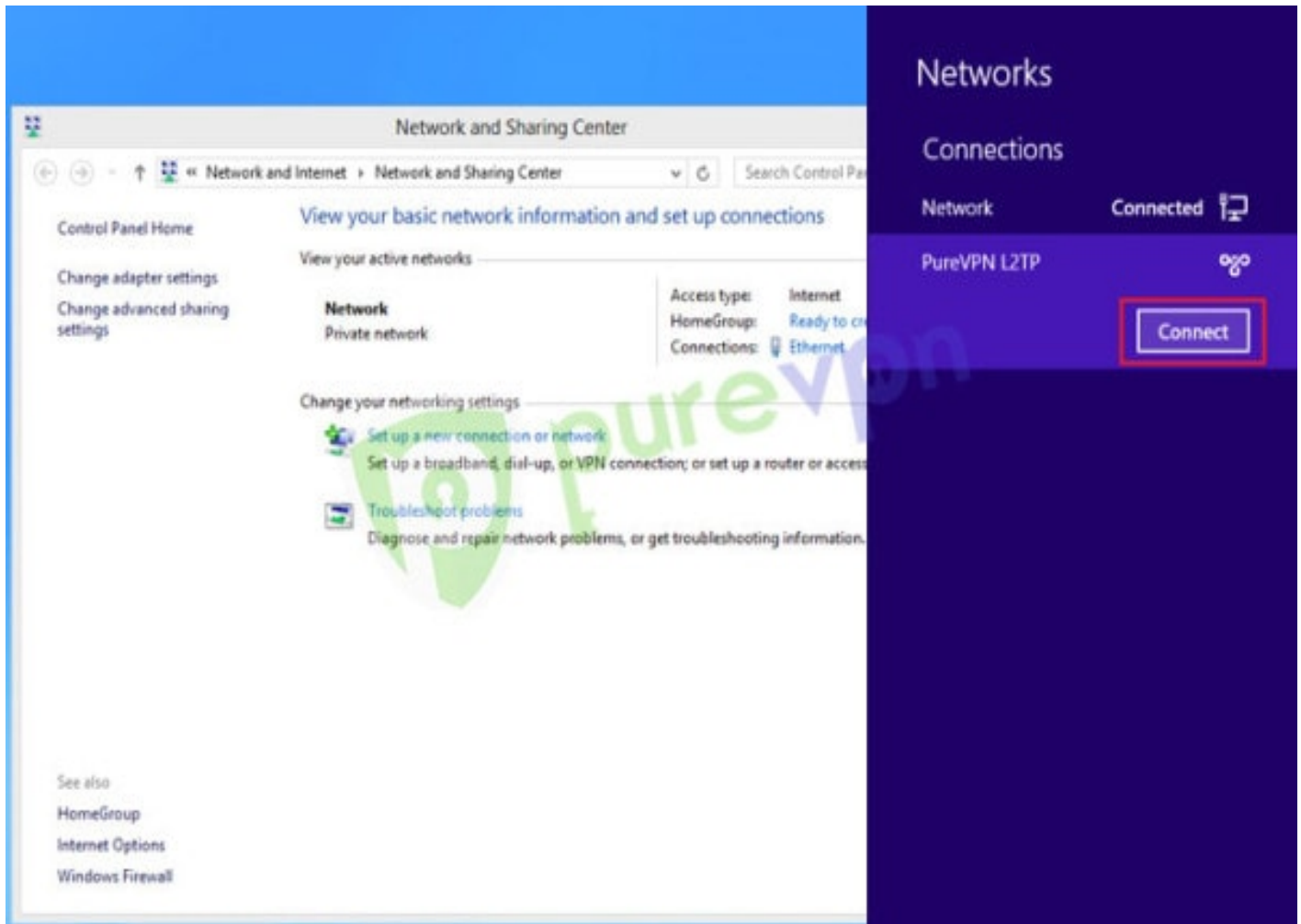
1. Click on the **Networking tab**
2. Uncheck **Internet Protocol Version 6 (TCP/IPv6)** and File and **Printer Sharing** for Microsoft Networks then
3. Click **OK**



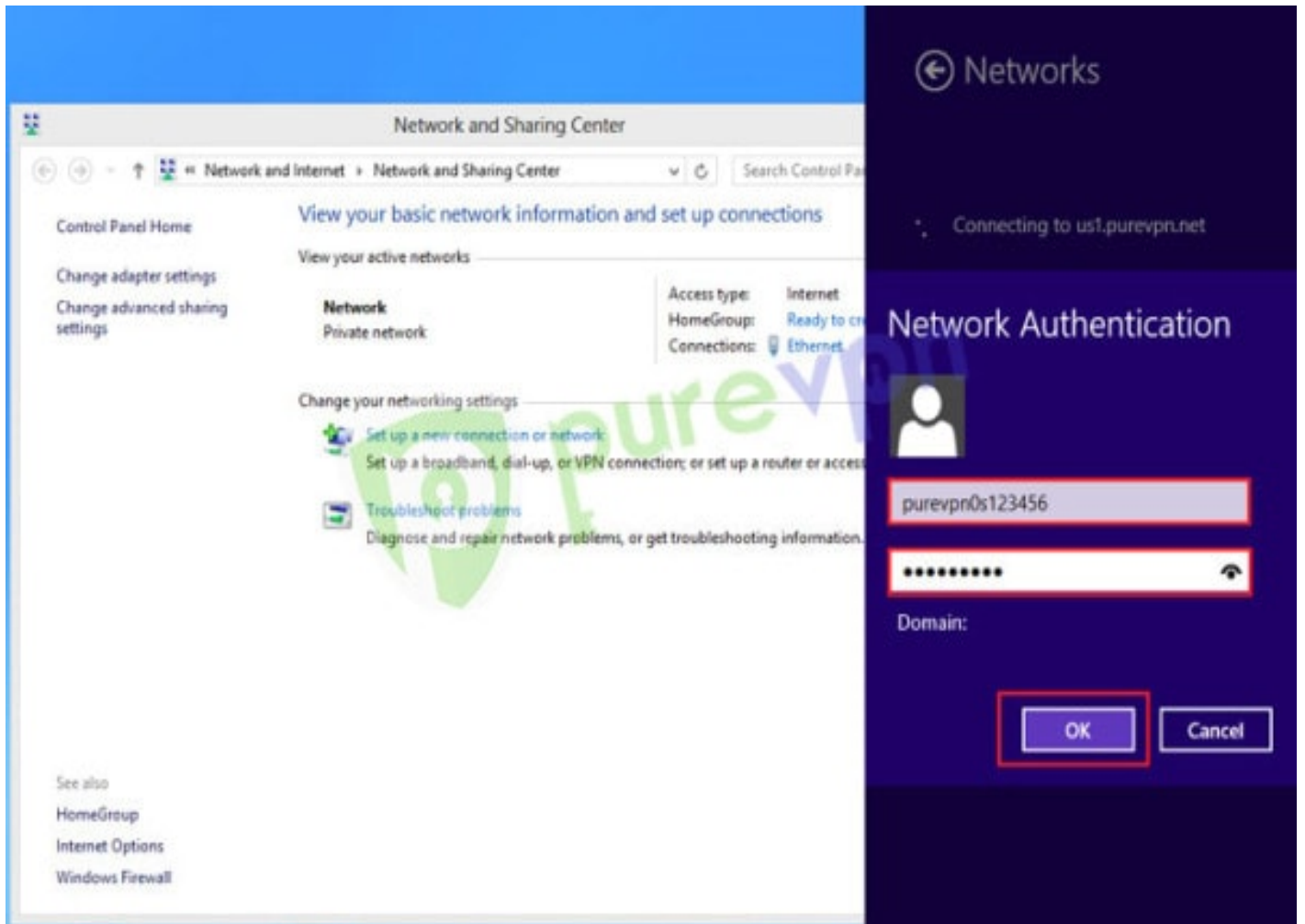
- Click **Wifi/ Lan icon** from System tray



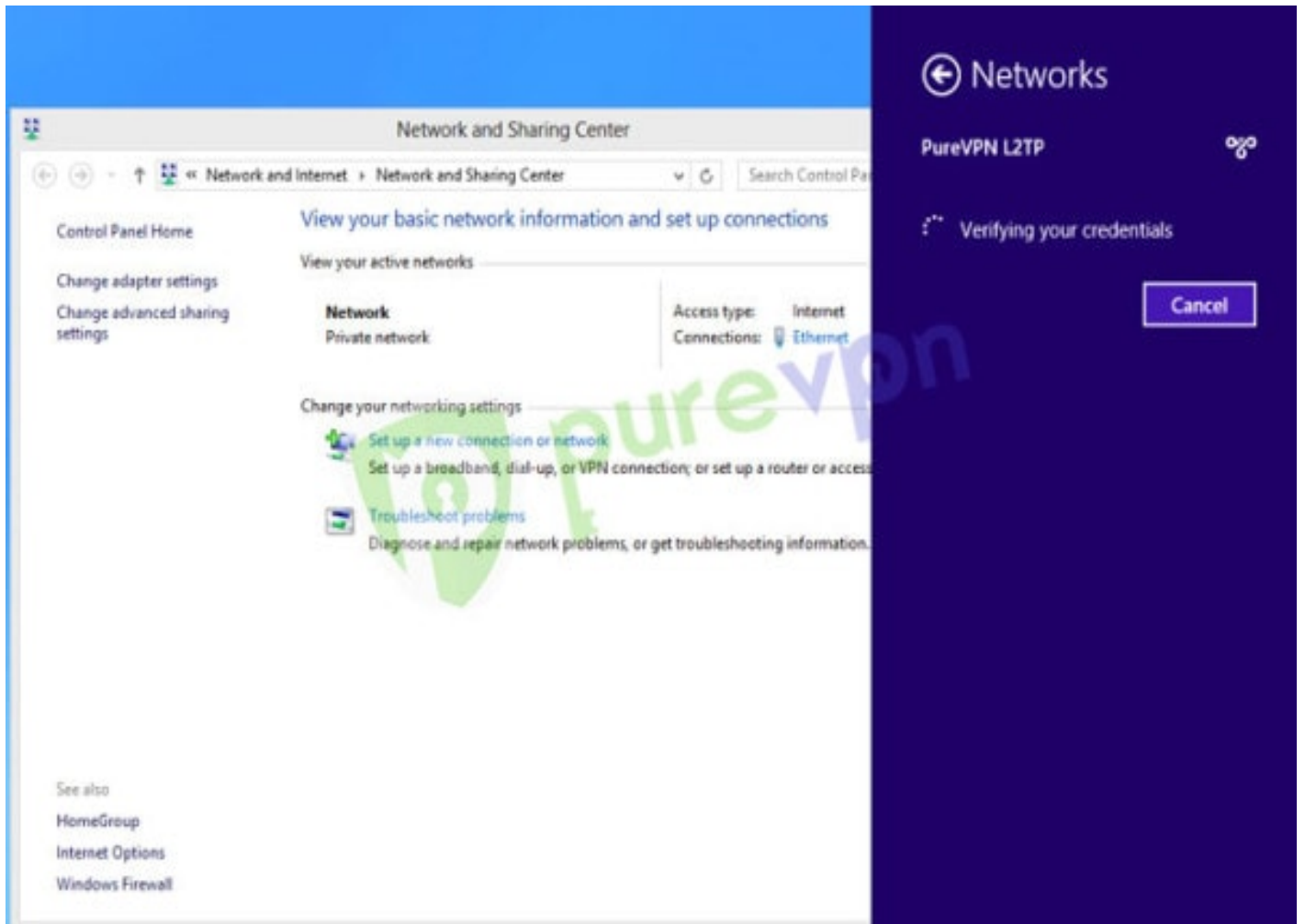
- Click **PureVPN L2TP** connection and click **Connect**



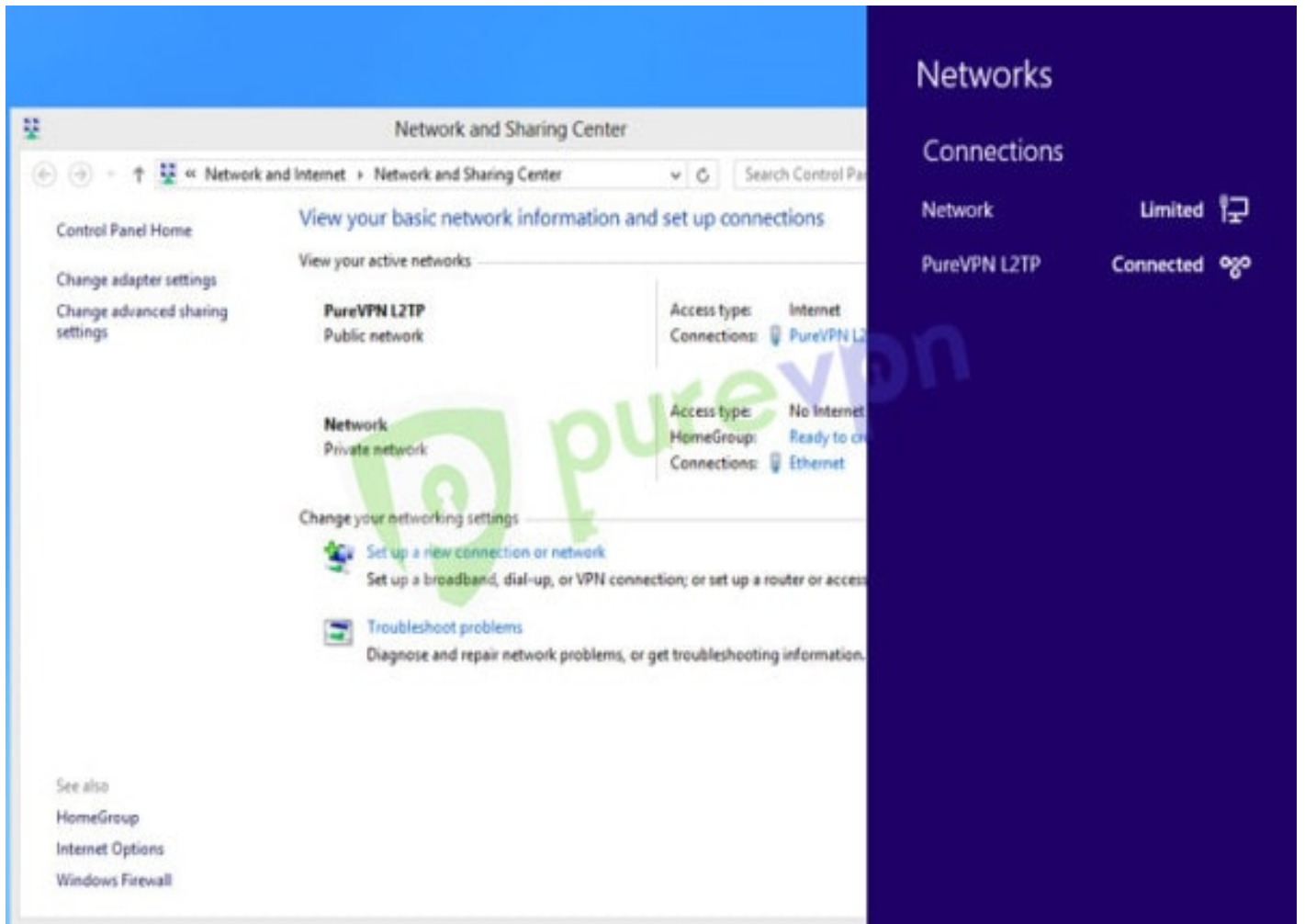
- Insert your PureVPN credentials provided by PureVPN then Click **OK**



- VPN connection will establish after verifying account details.



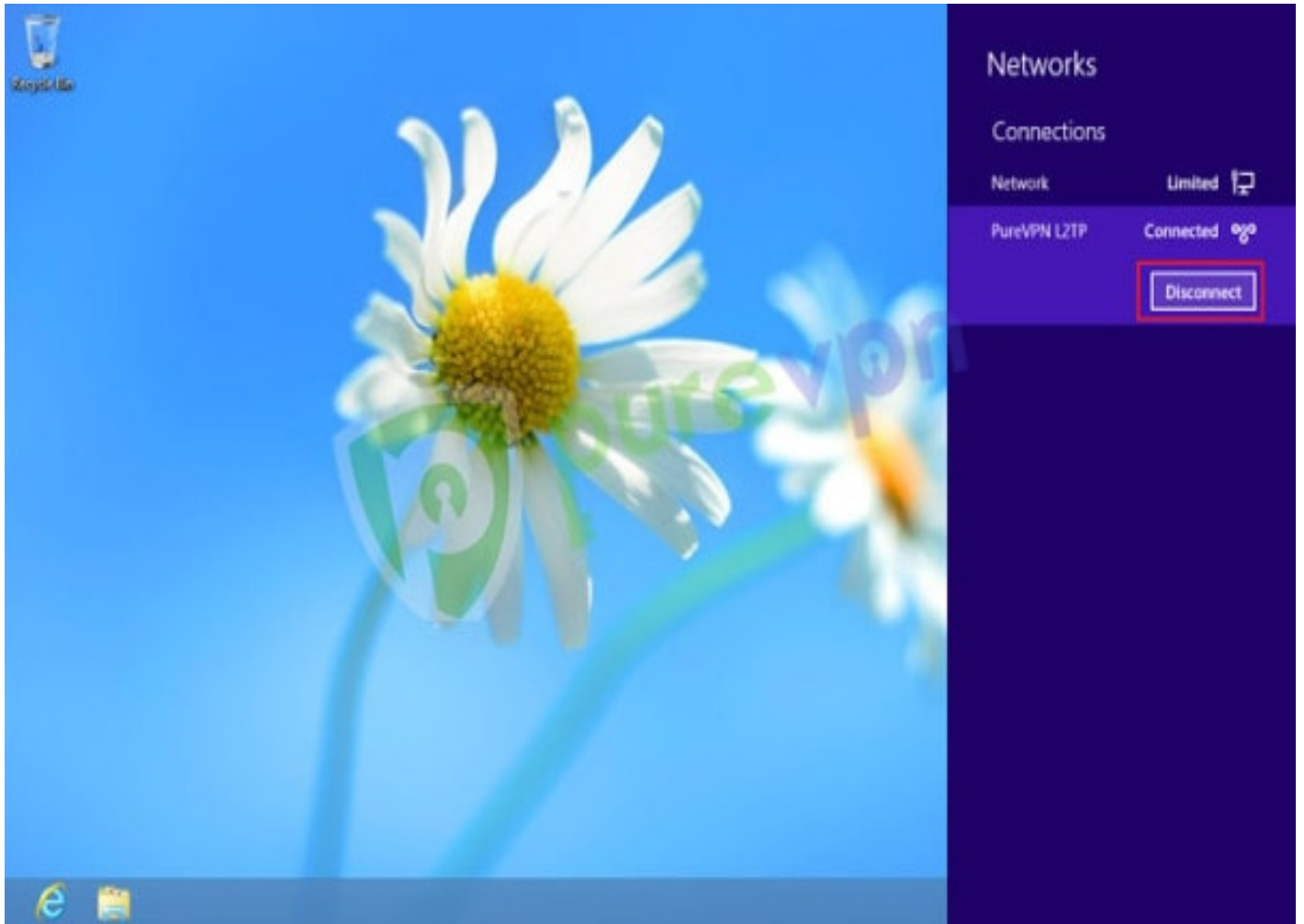
- You are **Connected** now.



- To disconnect VPN, click **Lan/ Wifi icon** from System tray



- Click **VPN** connection and click **Disconnect**



Having Trouble Connecting?

If you're still unable to connect, then please check the most common errors and their solutions

Error 868

[Solution](#)

Error 800, 806, 807, 809

[Solution](#)

Error 720


[Solution](#)

Error 691

[Solution](#)

Error 647

[Solution](#)



Was this article helpful? Rate and share your comments below. Your input matters to us and everyone else in the Cyber Security Community.