

How to Setup PureVPN Manually on Windows 8 (IKEv2)?

Things to Consider:

Before you begin, please make sure that:

- You have a working internet connection
- Windows Supported Device.
- A Premium PureVPN account (If you haven't bought yet [click here](#) to buy)

Follow these simple steps to configure PureVPN on Windows 8 IKEv2:

Note: We have just launched New PureVPN Windows Software BETA version. If you need guide on BETA version [Click Here](#).

1 Right click on “**Lan / Wifi icon**” from System tray and select “**Open Network and Sharing Center**”

2 Click on **“Set up a new connection or network”**

3 Select **“Connect to workplace”** and click **“Next”**

4 Select **“Use my Internet connection (VPN)”**

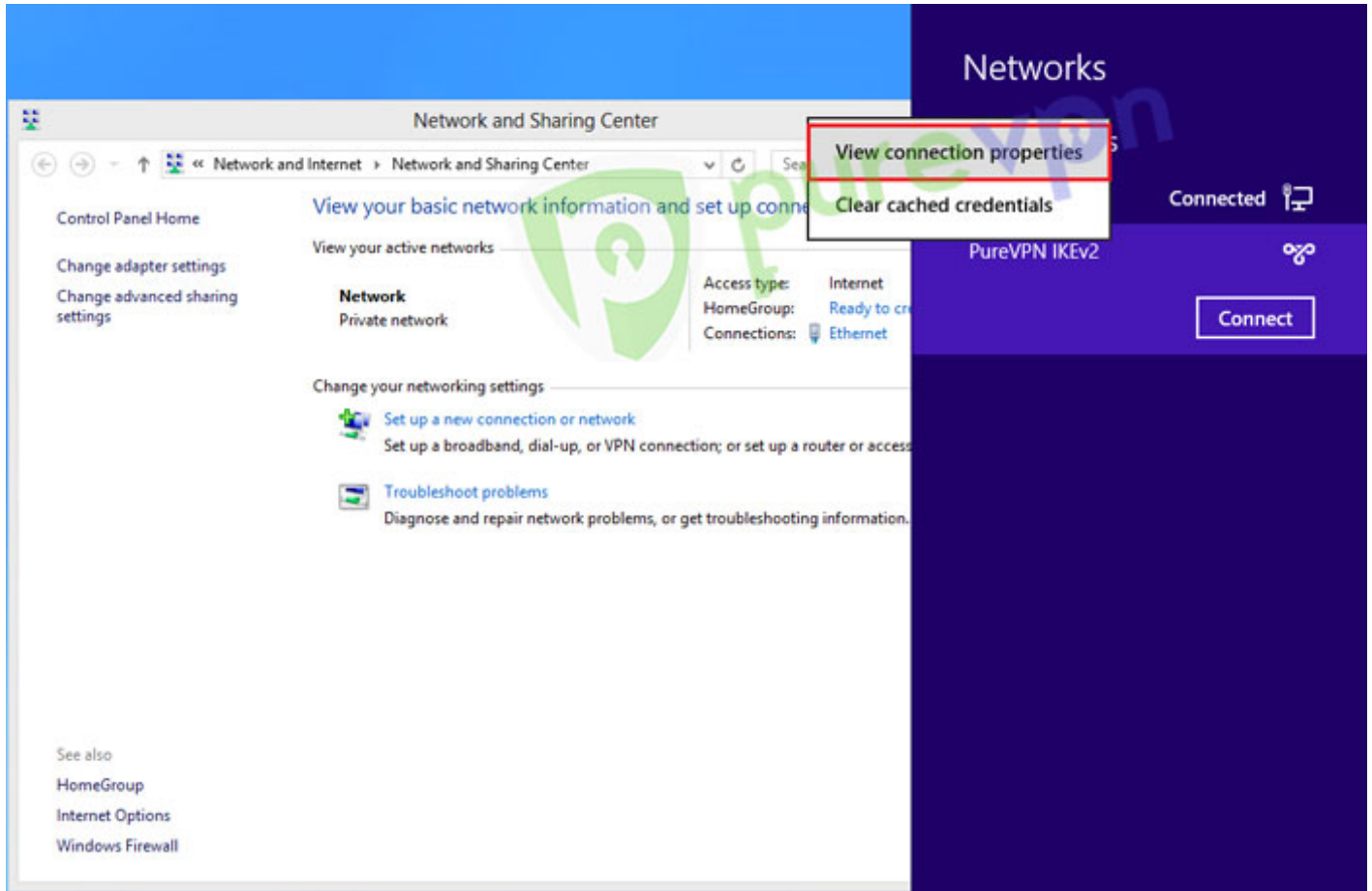
PureVPN Support

Solution of Your Problems
5 Insert the following info:
<https://support.purevpn.com>

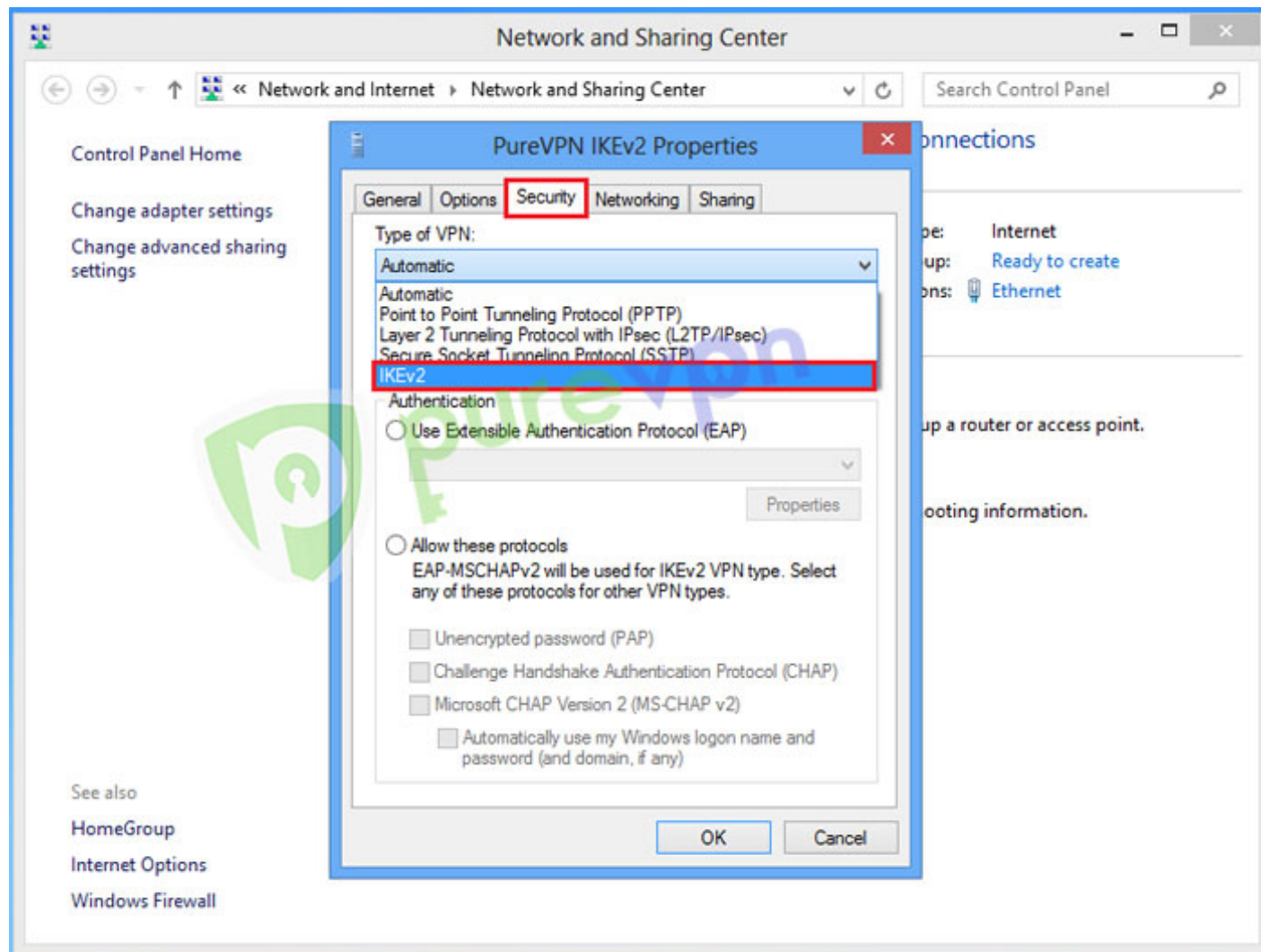
- Insert **desired server address / IP**. [Click here to get the server list](#)
- Insert **destination name** as PureVPN IKEv2 or PureVPN US etc
- Select **“Remember my credentials”**
- Select **“Allow other people to use this connection”**
- Click **“Create”**

6 Right click on **“PureVPN IKEv2 ”** connection and select **“View connection properties”**

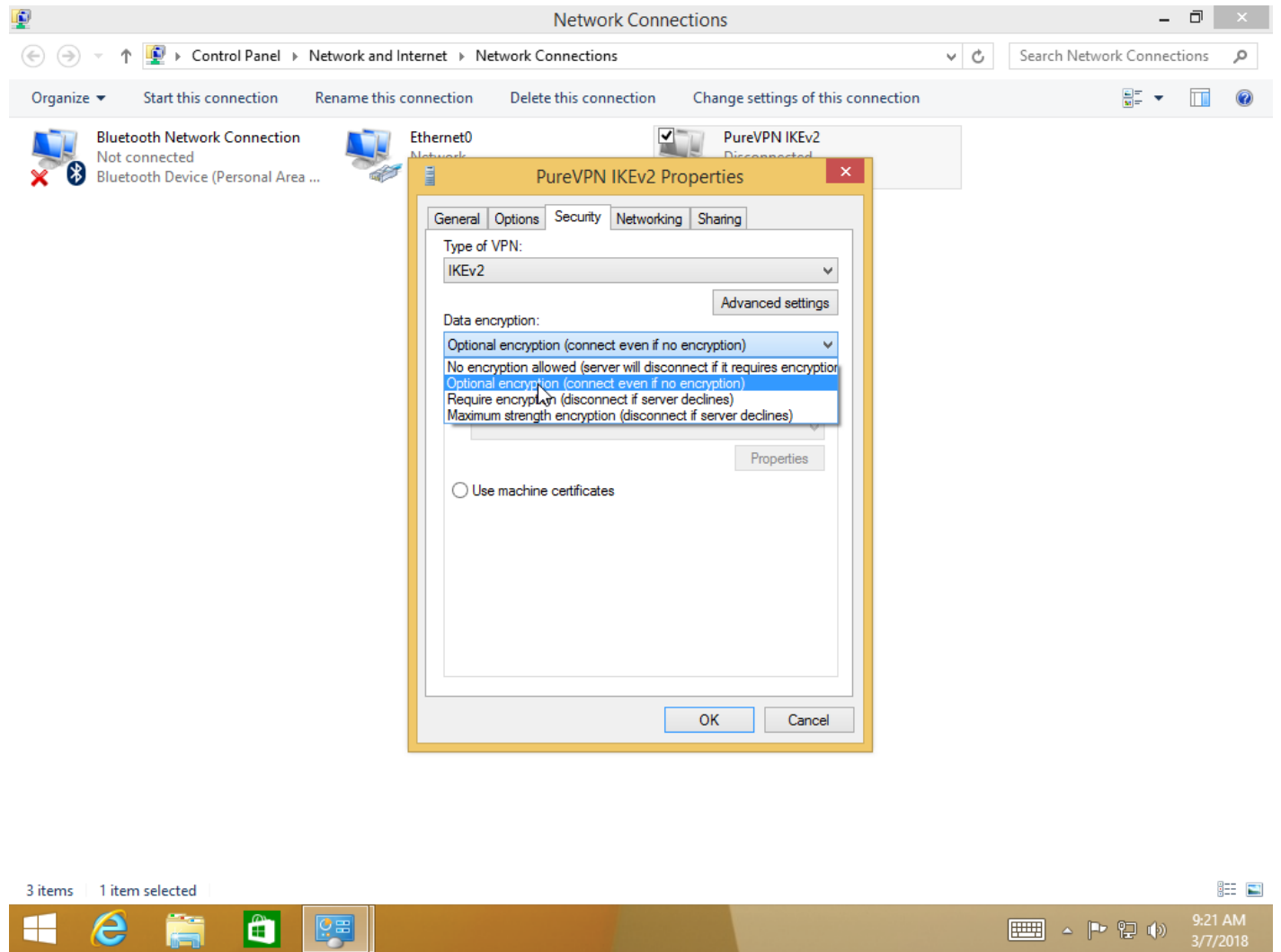
Note: If you are on Windows 8.1, then click on “Change Adapter Settings” from the “Network and Sharing Center, right click on PureVPN IKEv2 connection, select Properties



7 Click on **Security tab** and select “IKEv2”

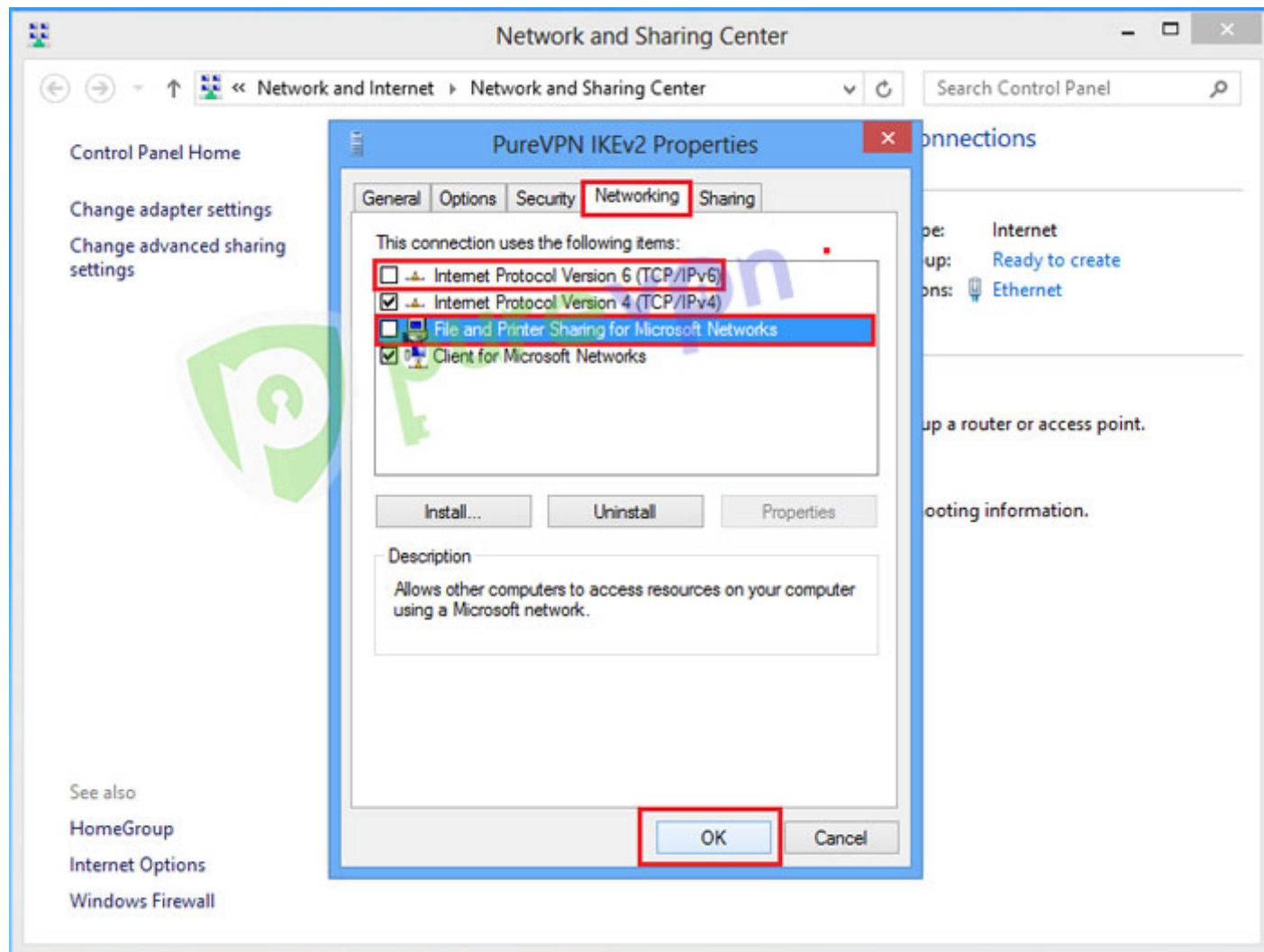


8 Select Optional or Require encryption from “**Data encryption**” drop down menu

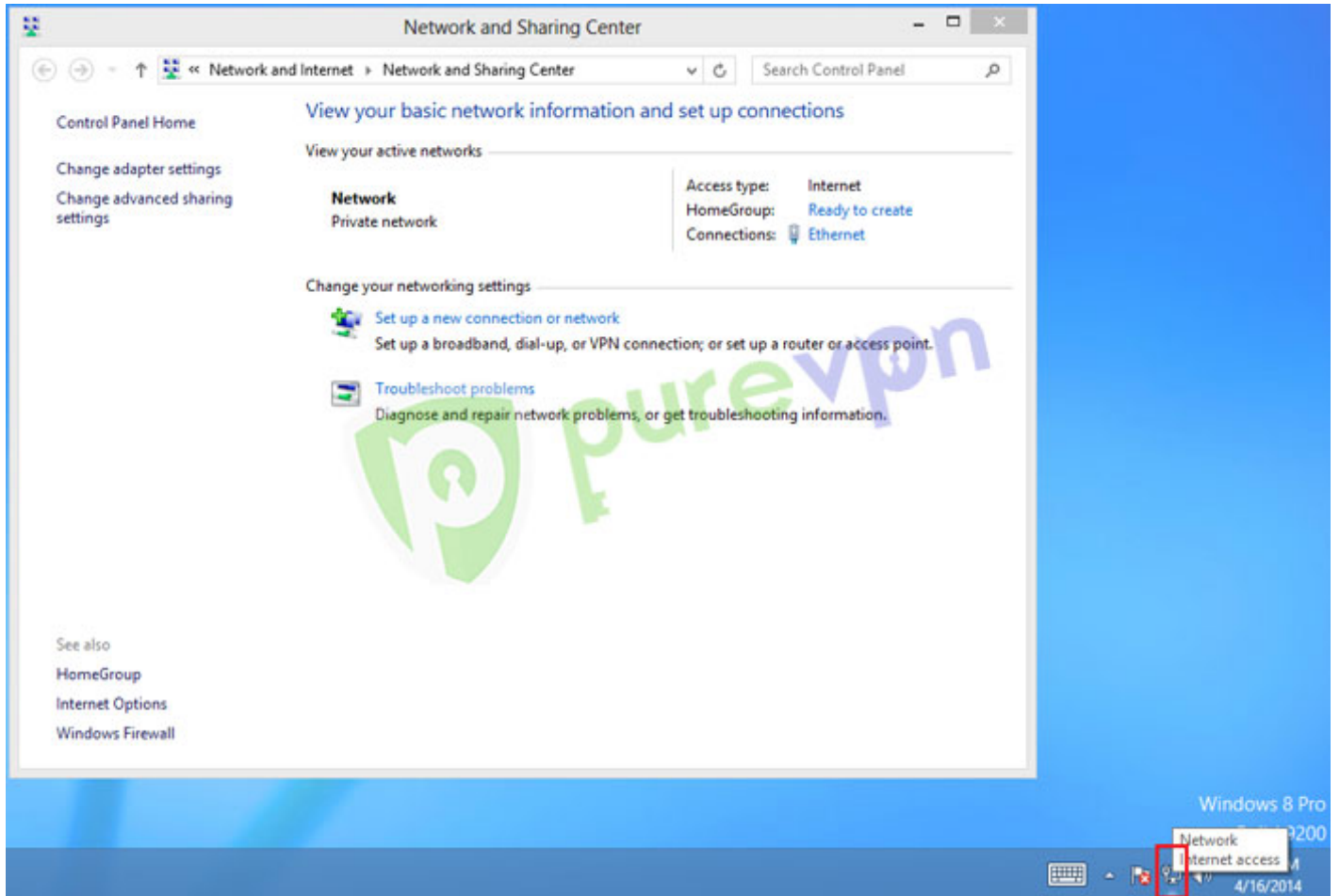


9 Insert the following info:

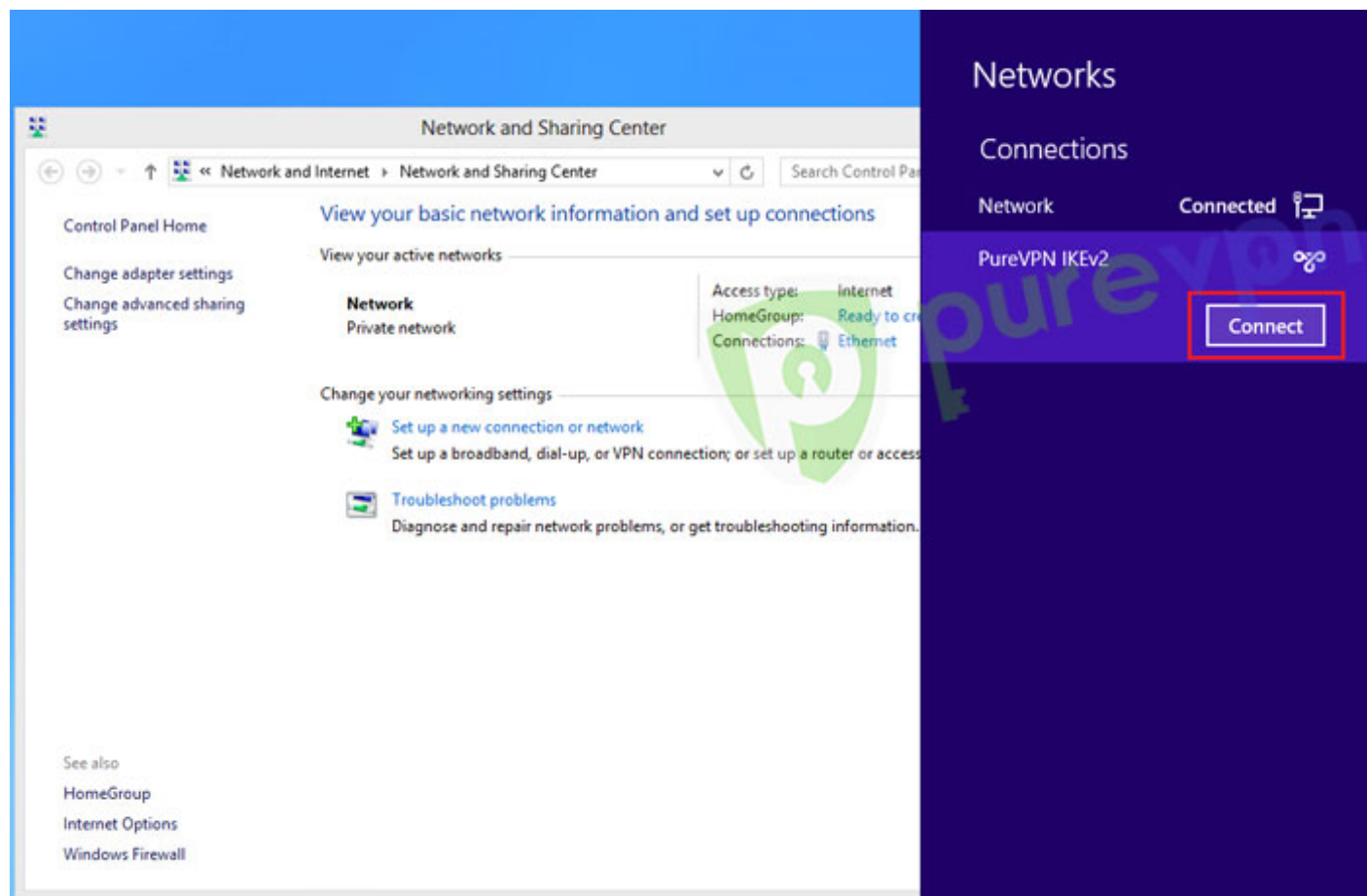
- Click on “**Networking**” tab
- Uncheck “**Internet Protocol Version 6 (TCP/IPv6)**” and “**File and Printer Sharing for Microsoft Networks**” then
- Click “**OK**”



10 Click on **Wifi / Lan icon** from System tray

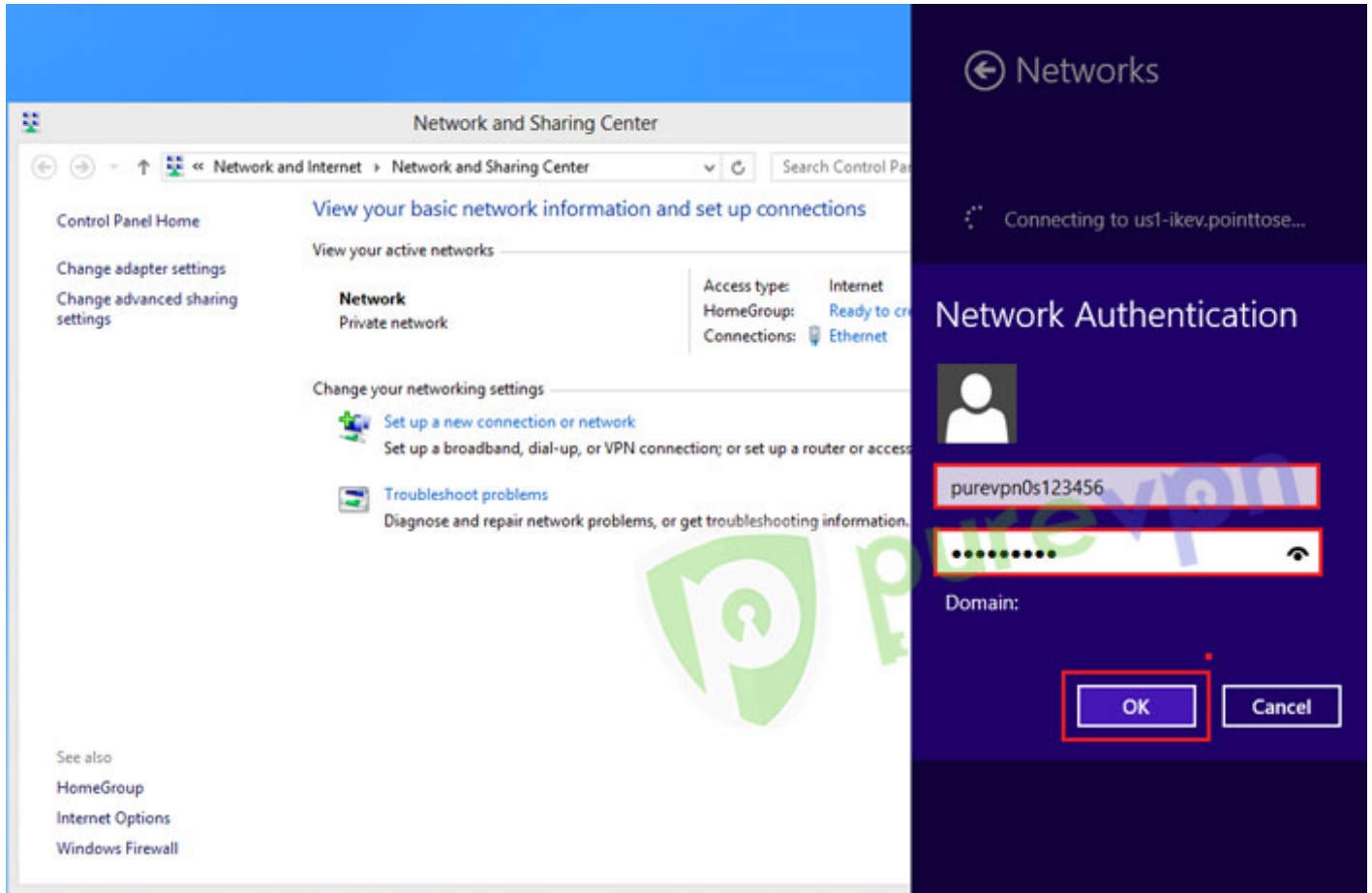


11 Click on PureVPN IKEv2 connection and click **“Connect”**

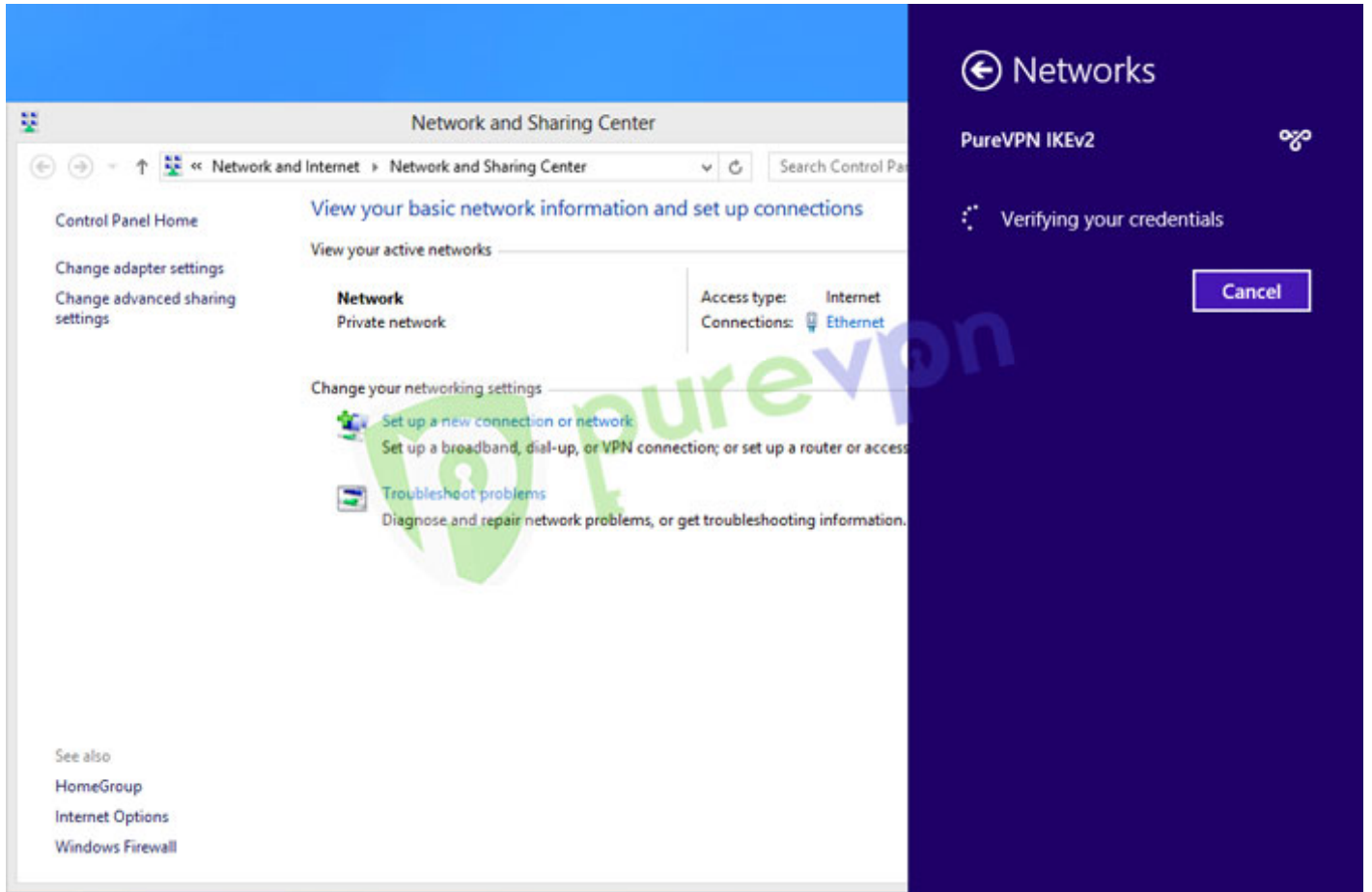


12 Insert your **Username and Password** provided by PureVPN then Click “OK”

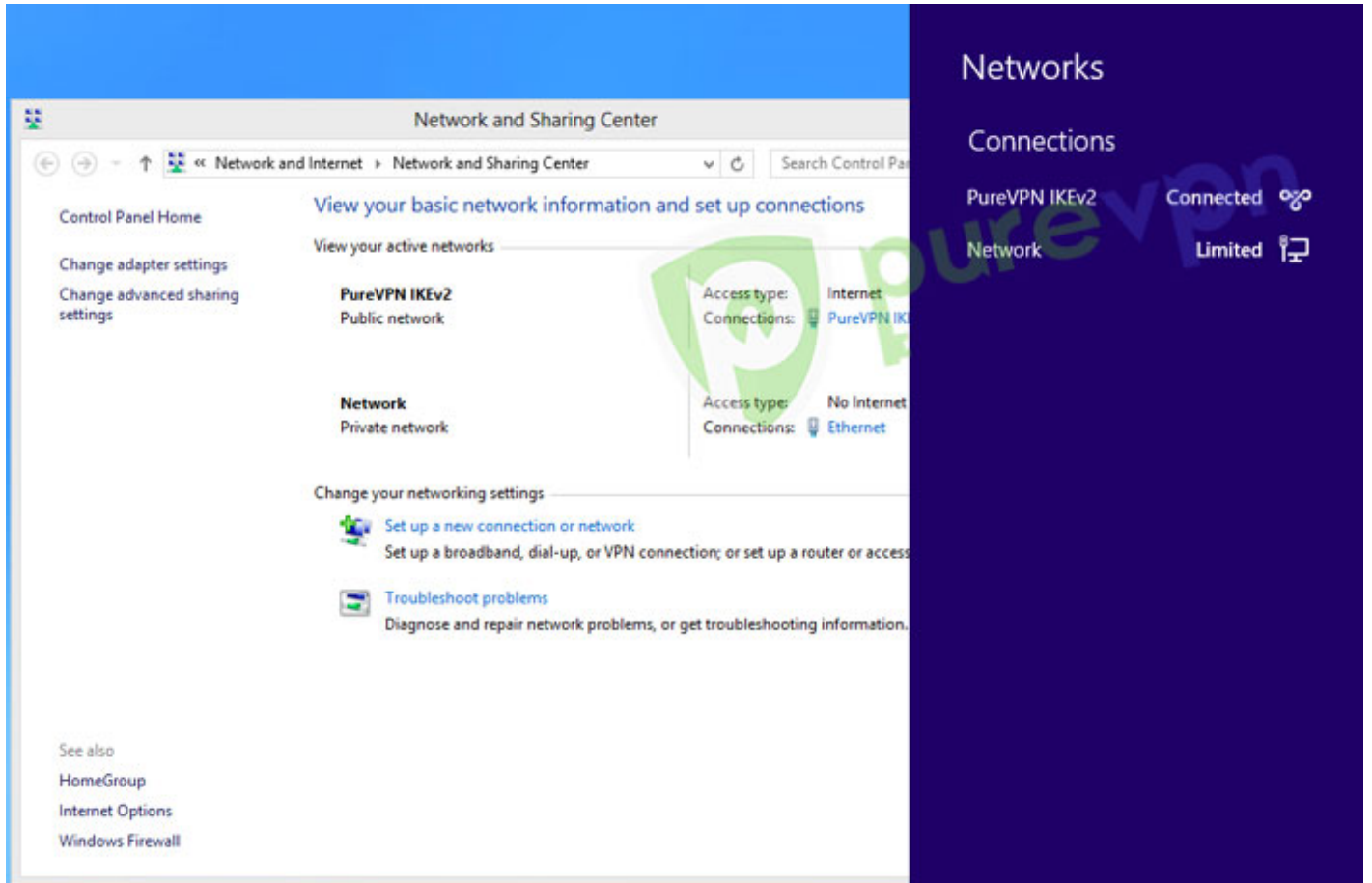
Important Note: Please always remember your PureVPN username & password is different from your Website Member Area email address & Password.



13 VPN connection will establish after verifying account details.



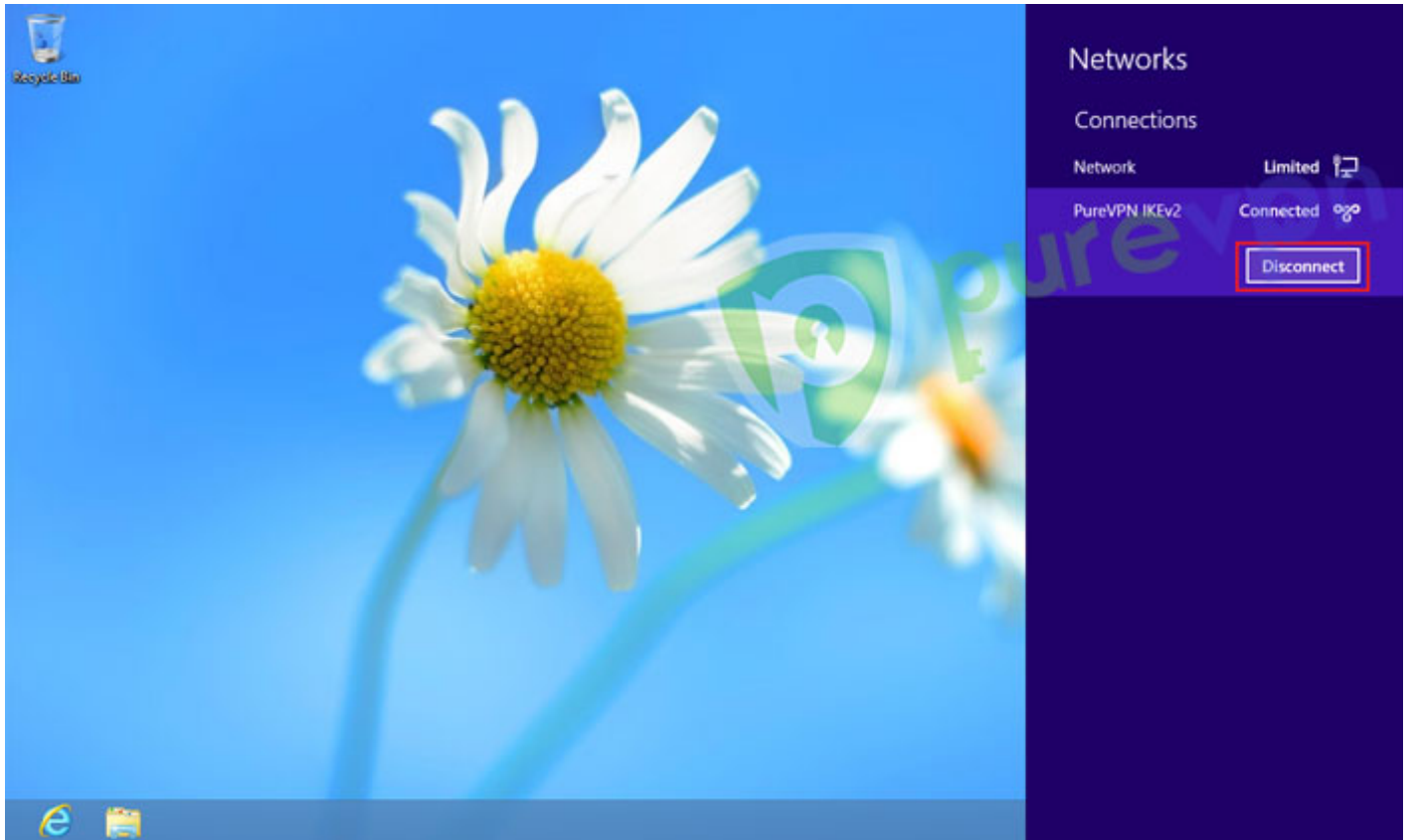
14 You are connected now.



15 To disconnect VPN, click on **Lan / Wifi icon** from System tray



16 Click on VPN connection and click **“Disconnect”**



Caution: If you are looking for higher security, then please follow this [guide to disable your IPv6](#)

PureVPN Support

Solution of Your Problems

<https://support.purevpn.com>

Please use the **comment box** for your suggestions & feedback. For additional help, please submit [support ticket](#) with errors and screen shots (if possible) **OR** Contact our 24/7 live chat.