

How to Setup PureVPN Manually on Windows 7 IKEv2?

Things to Consider:

1. You have a working internet connection
2. Windows Supported Device.
3. A Premium PureVPN account (If you haven't bought yet click ?[here](#) to buy)

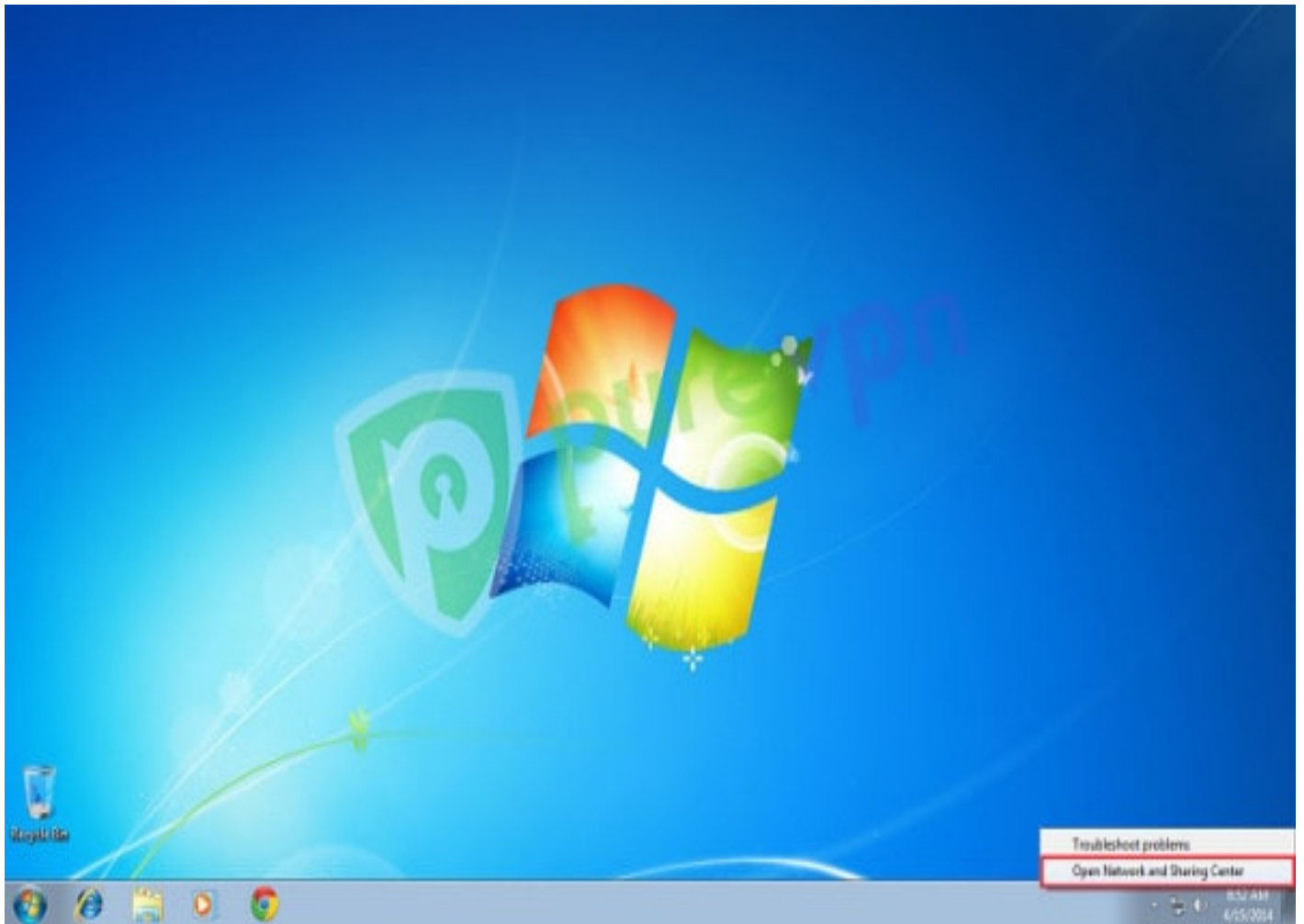
Find your VPN credentials for manual configuration.

To find your VPN credentials log into the PureVPN members area. Click ? [here](#) to visit member area.

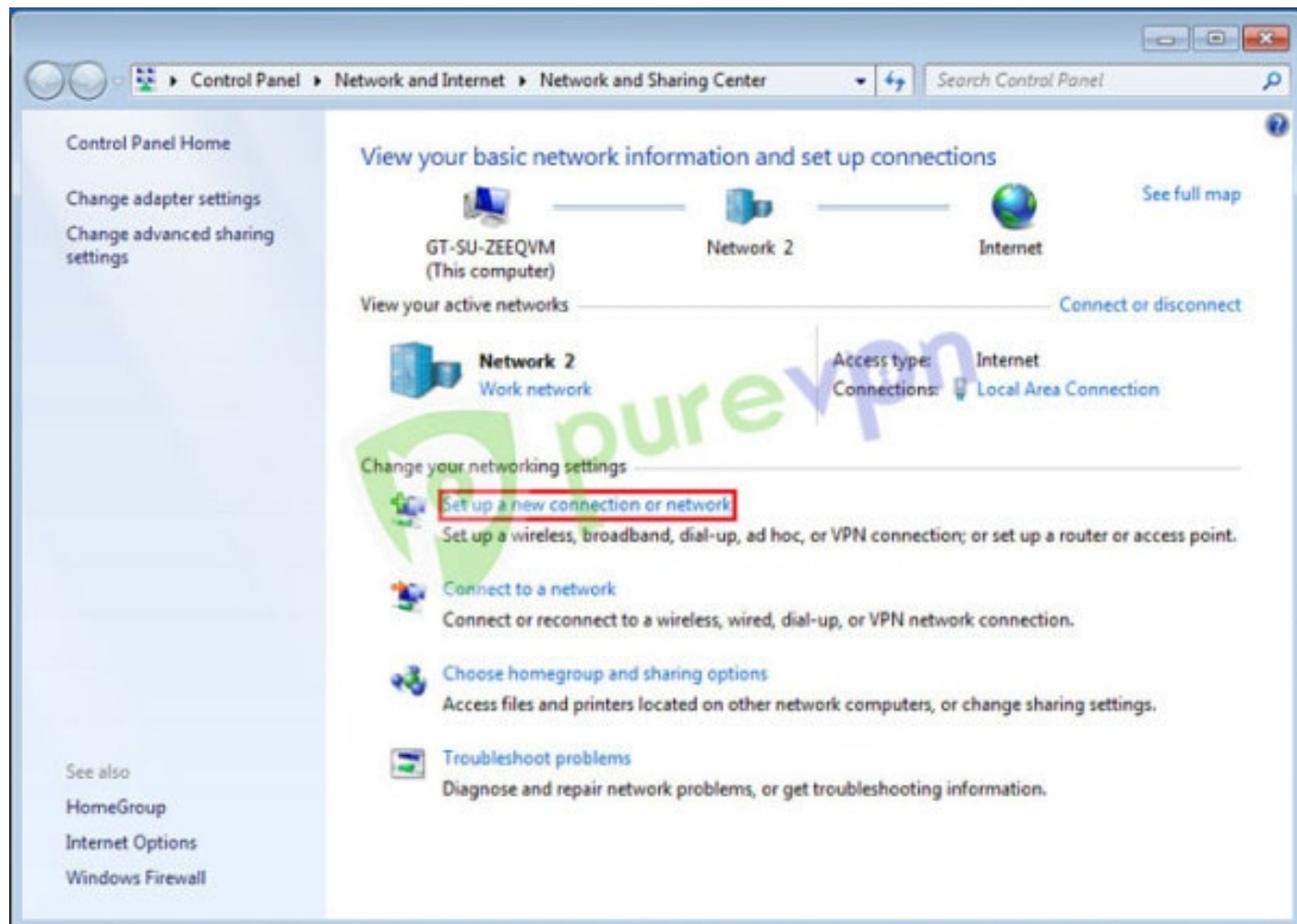
- Login to the **Member area** using your PureVPN registered email address and password.

How to connect PureVPN manually on Windows 7.

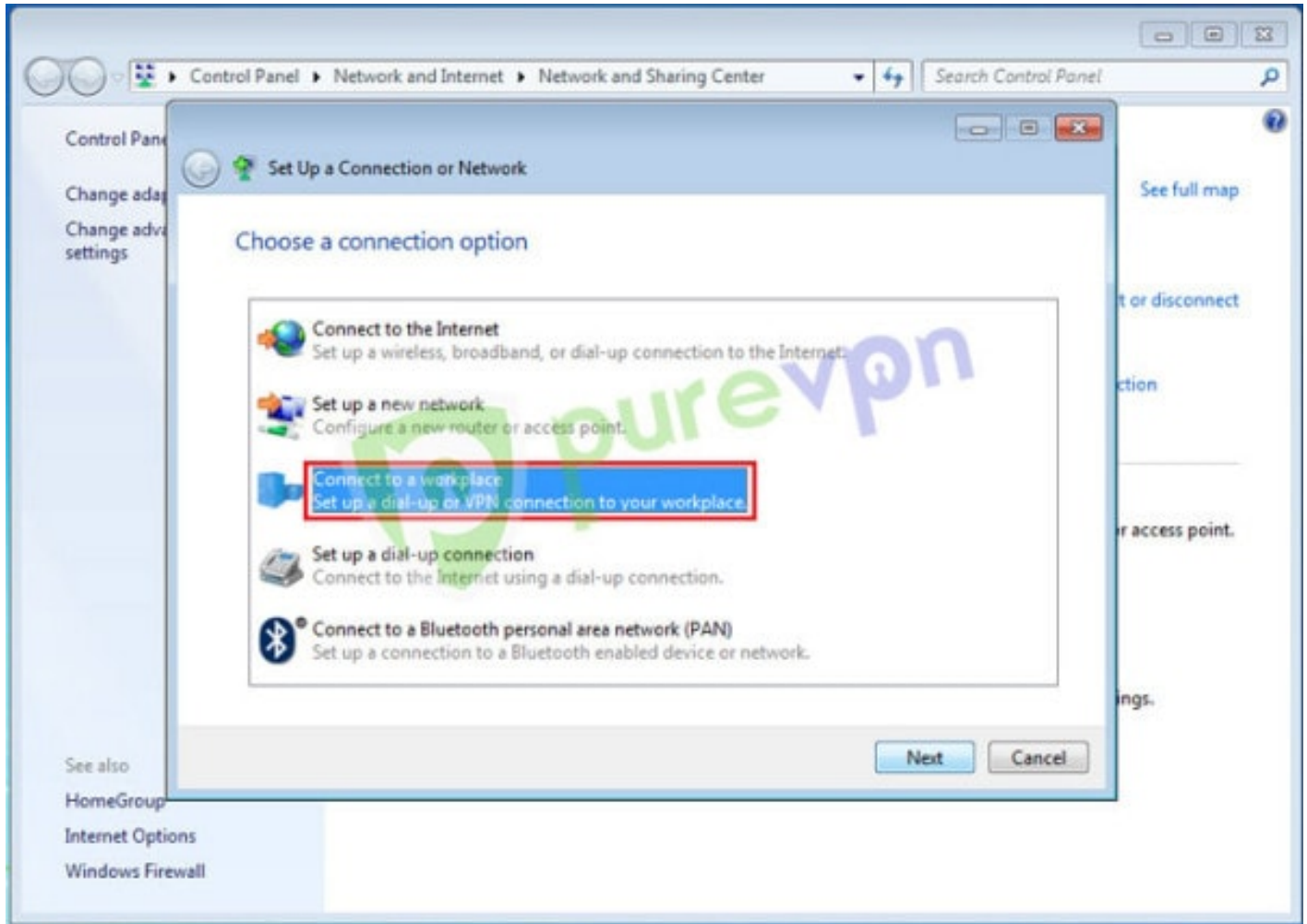
- Right click **Lan/ Wifi** icon from system tray and select Open Network and Sharing Center.



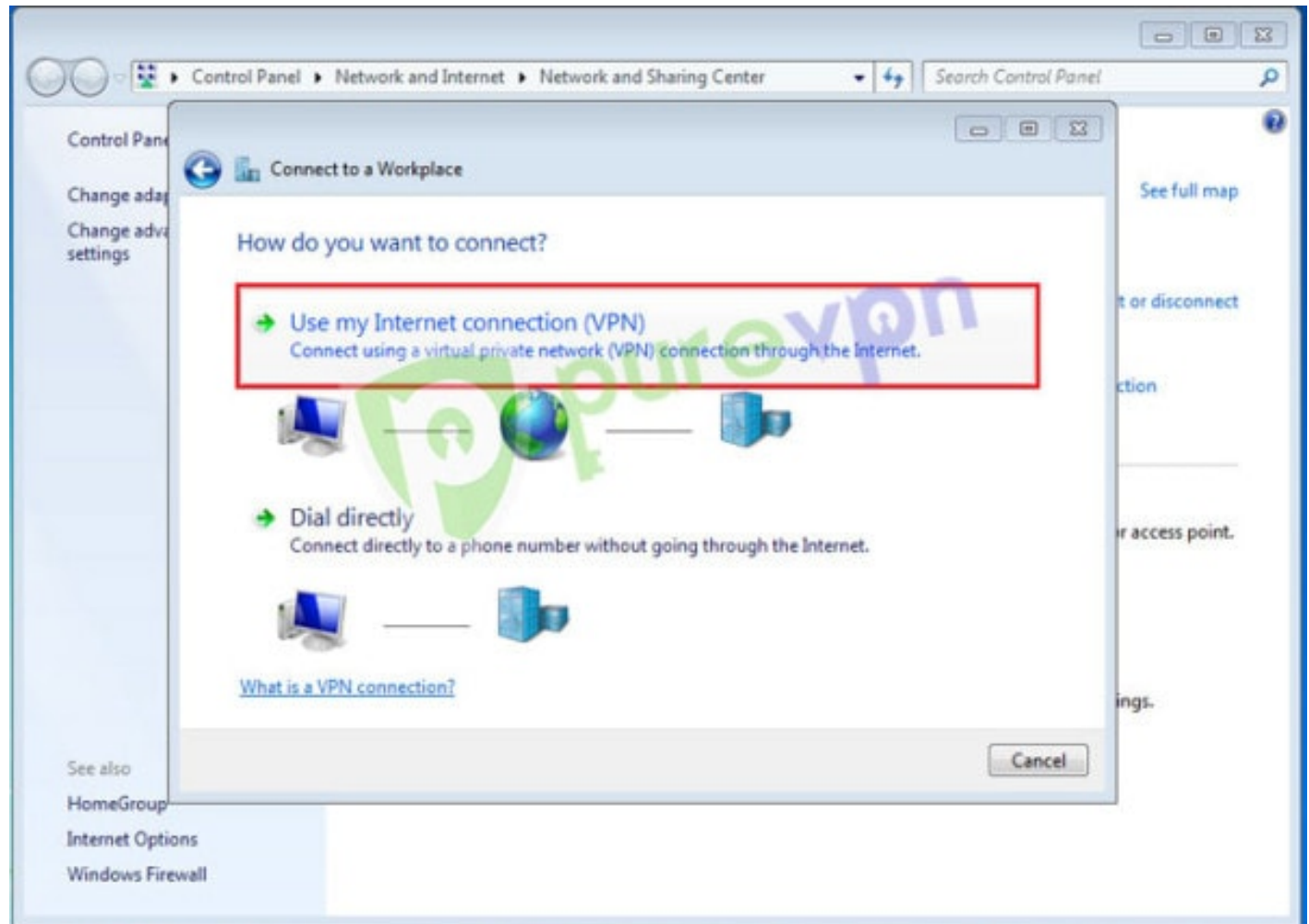
- Click **Set up a new connection or network**



- Click **Connect to a Workplace**

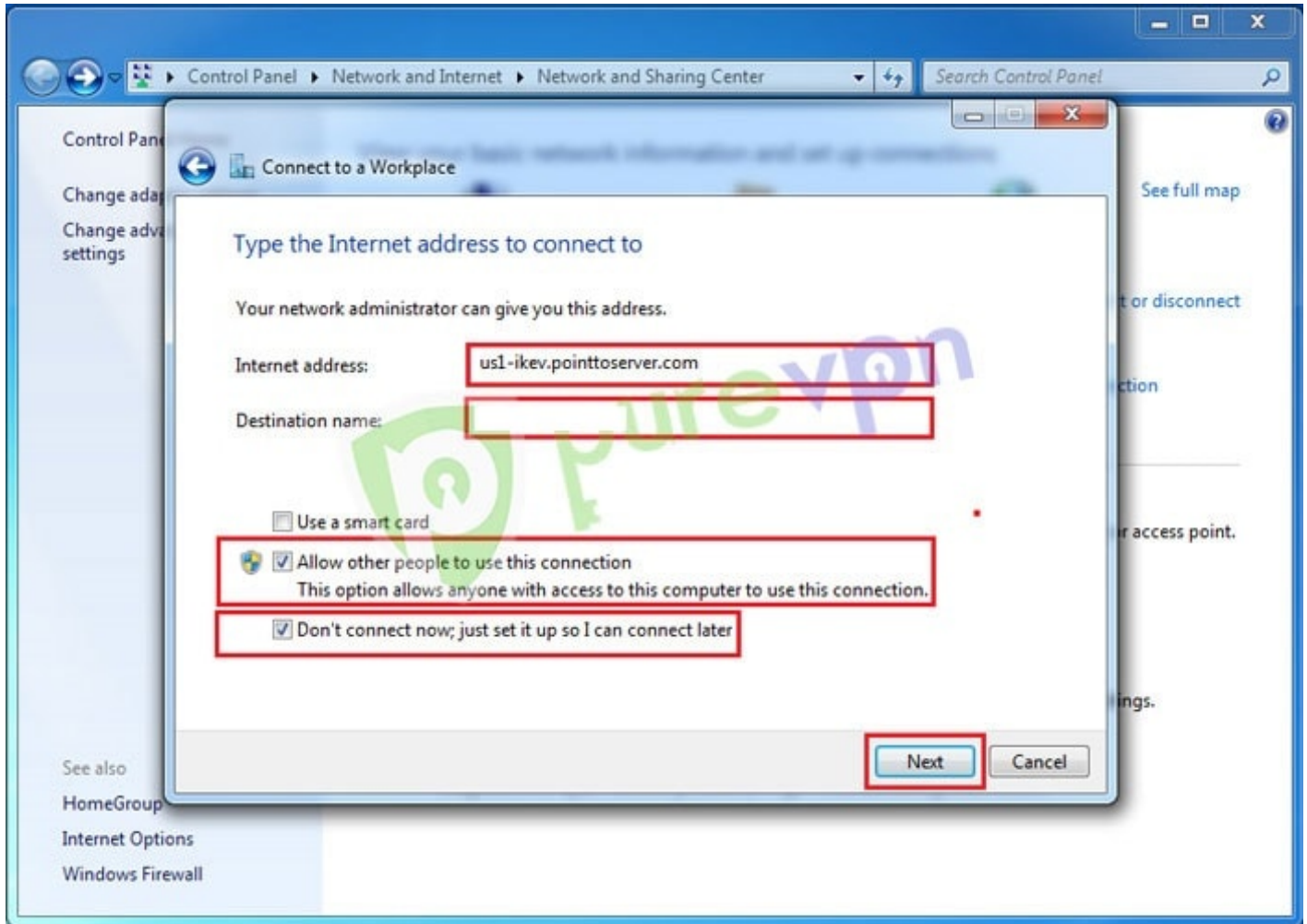


- Click **Use my internet connection (VPN)**.

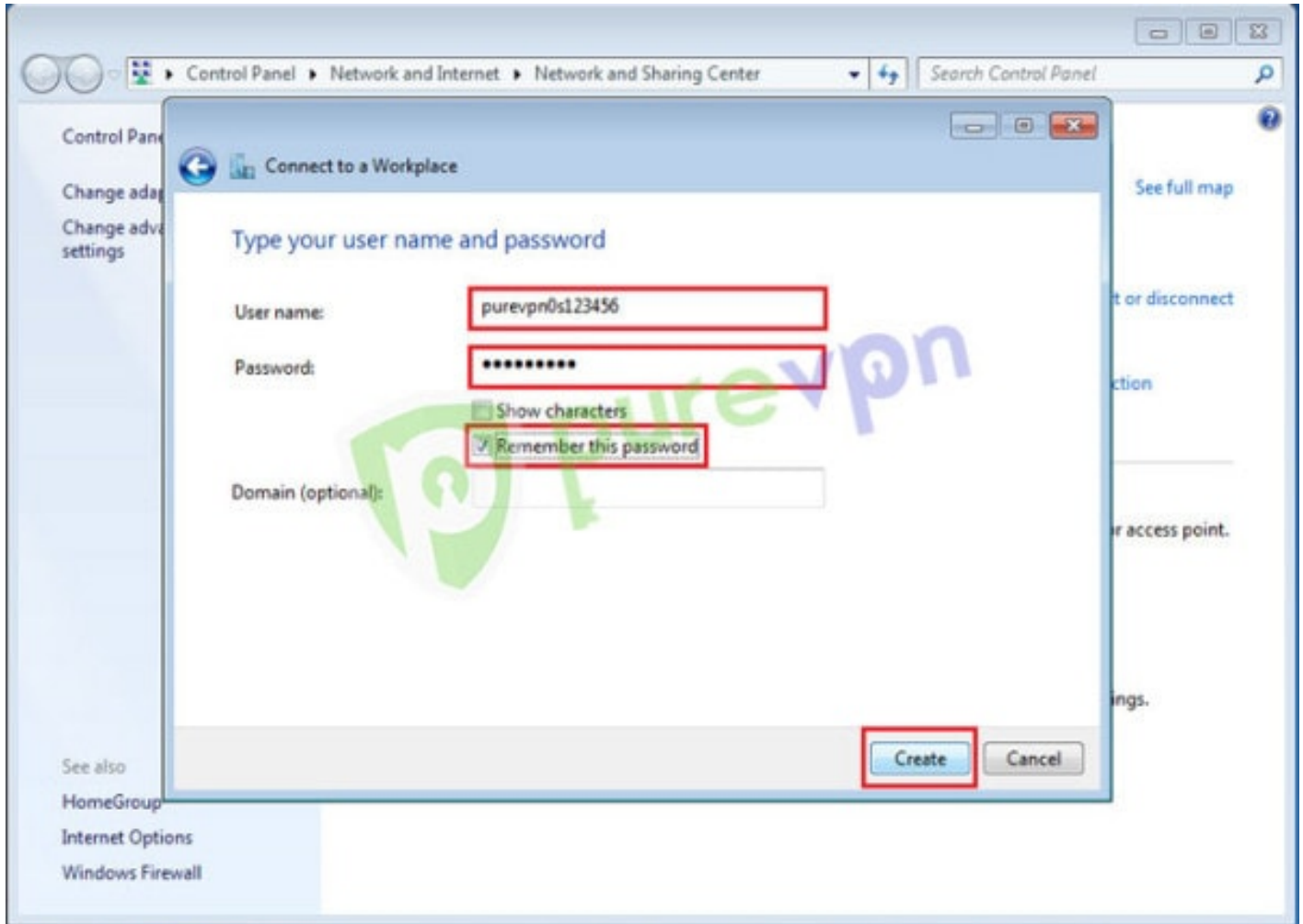


- **Insert the following info:**

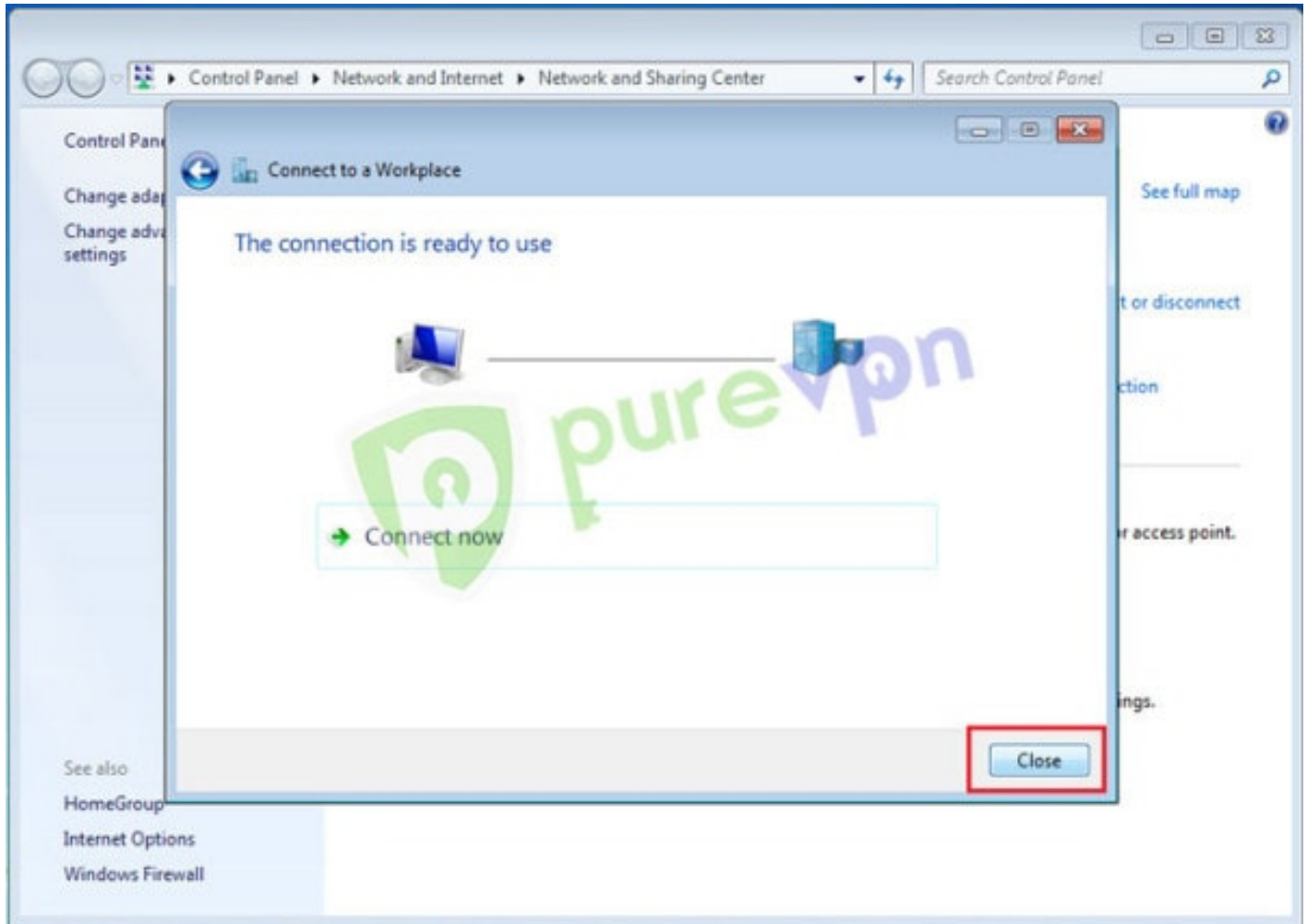
1. Insert desired server address/ IP. Click ?[here](#) to get the server list
2. Insert destination name as PureVPN IKEv2 or PureVPN US etc
3. Select Allow other people to use this connection
4. Select Don't connect now, just set it up so I can connect later and click **Next**



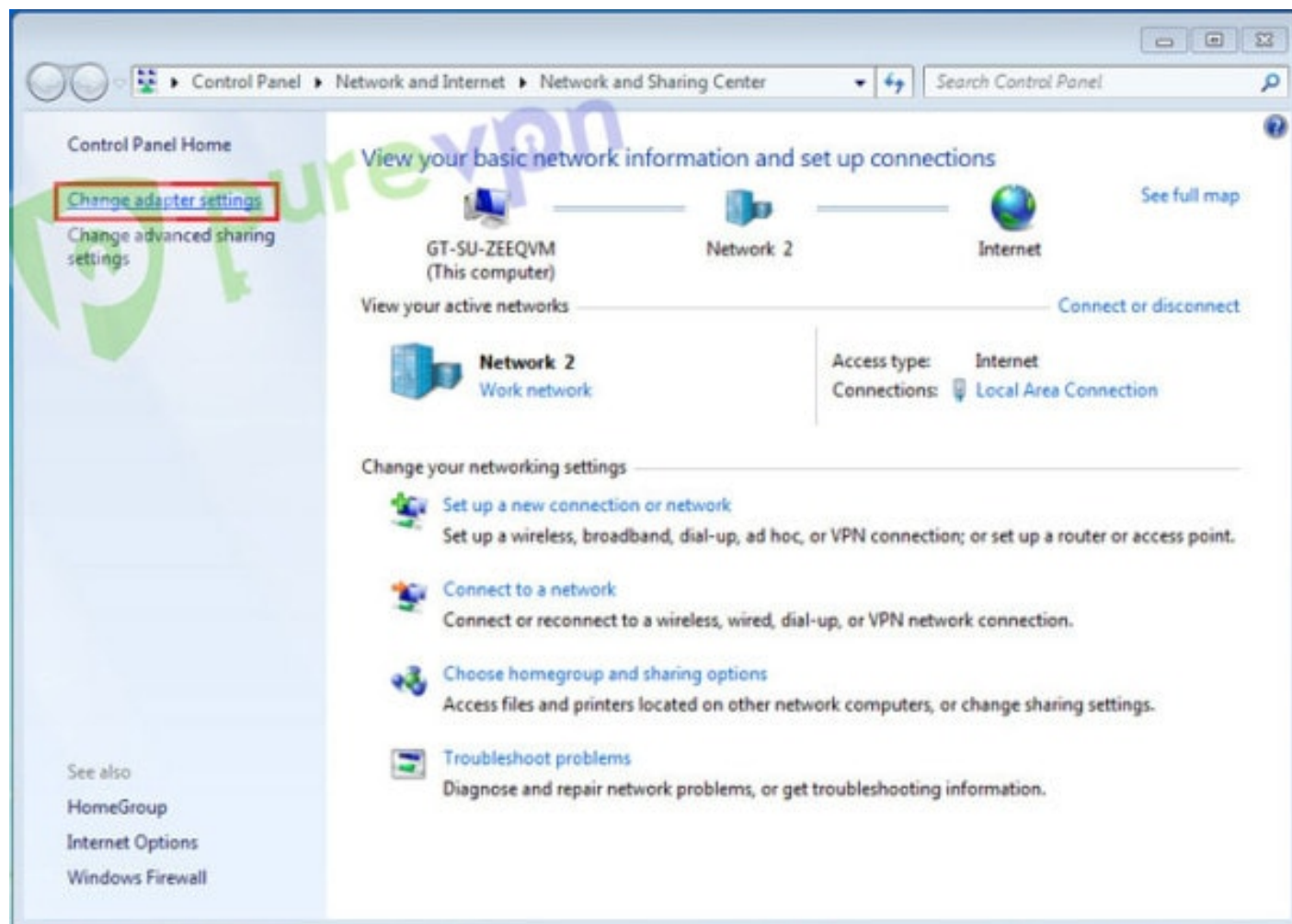
- Enter your PureVPN credentials. Here is how you can find your [VPN credentials](#).
- Tick Remember this password and hit Create



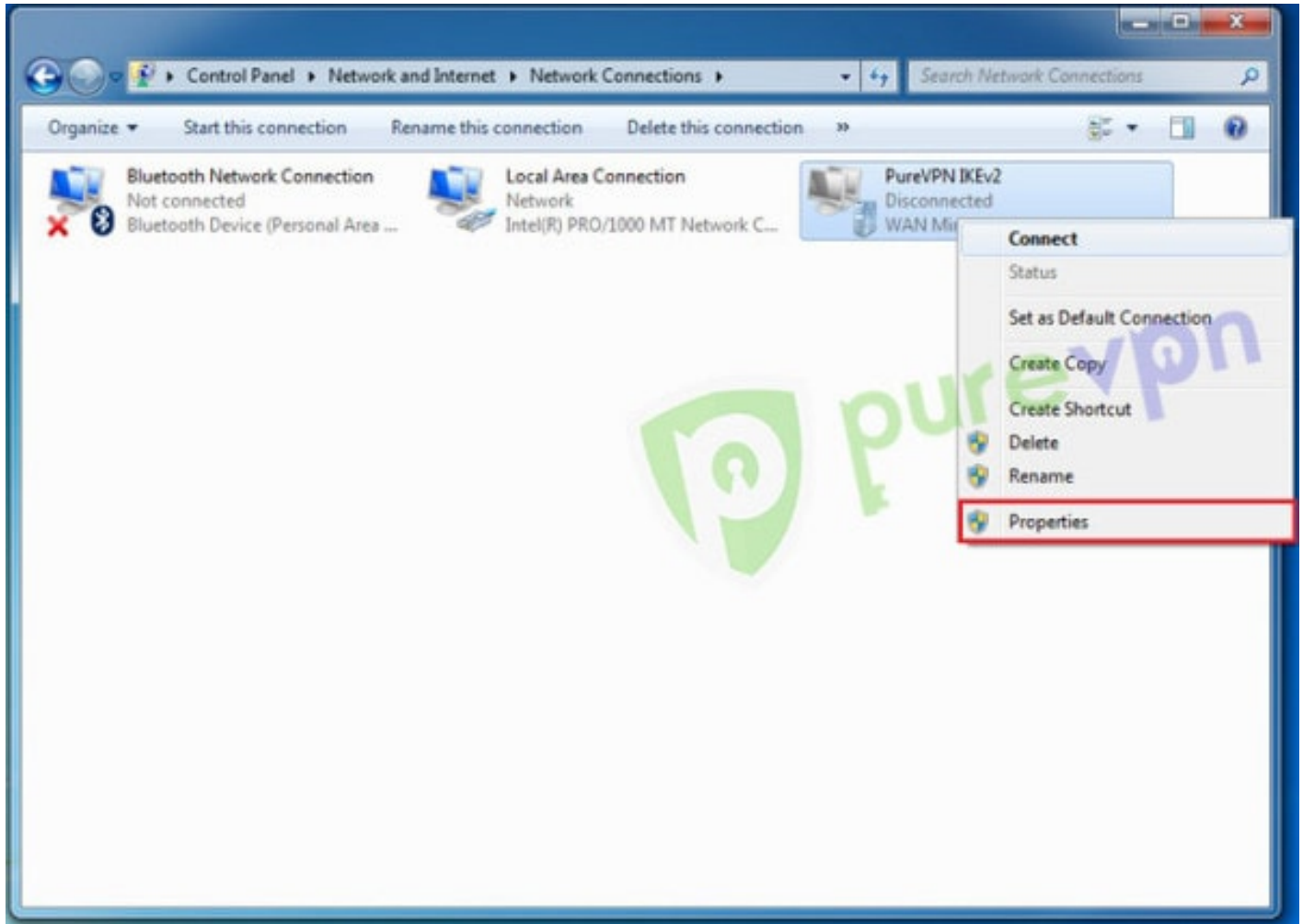
- Click **Close**.



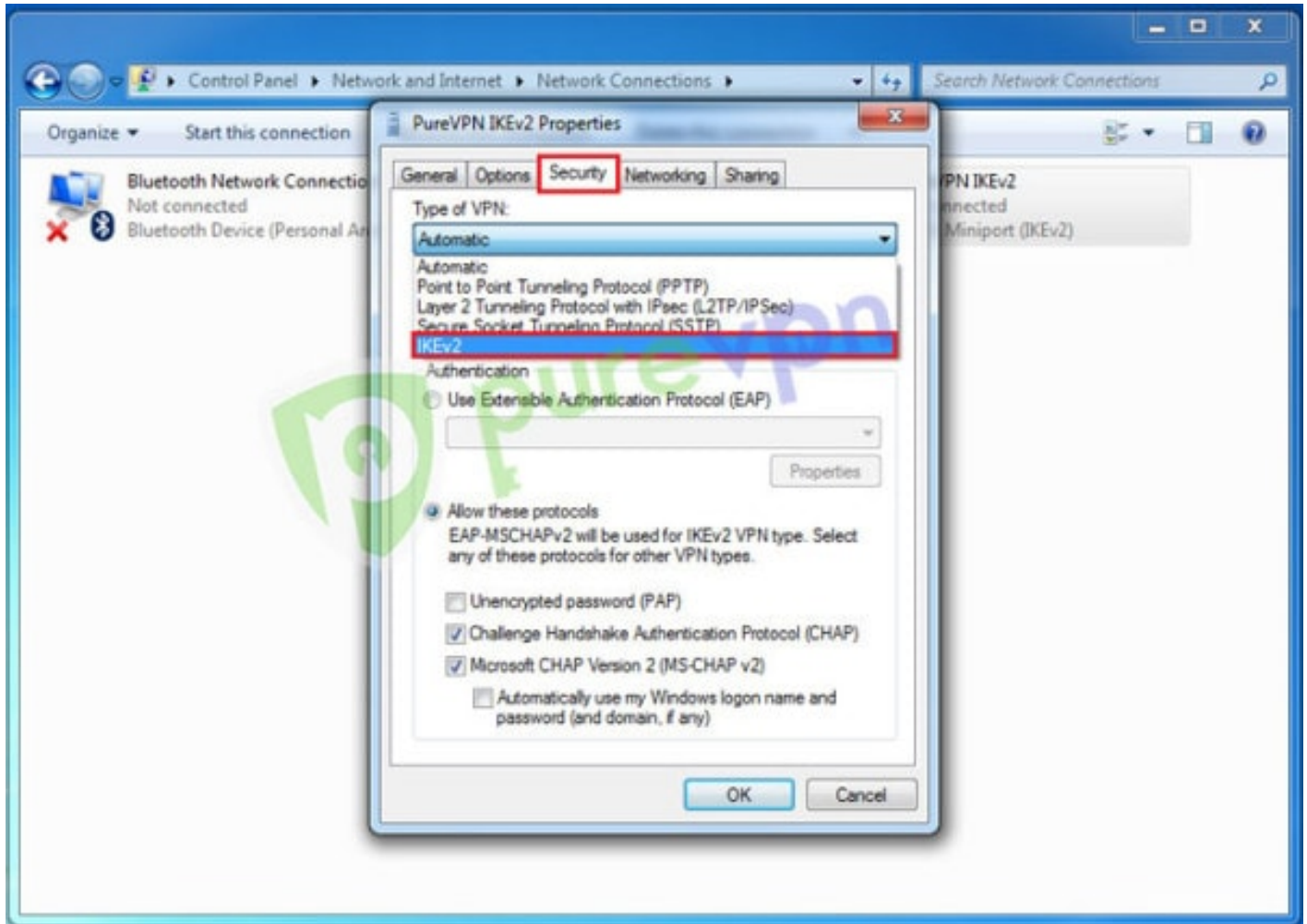
- Click **Change adapter settings**.



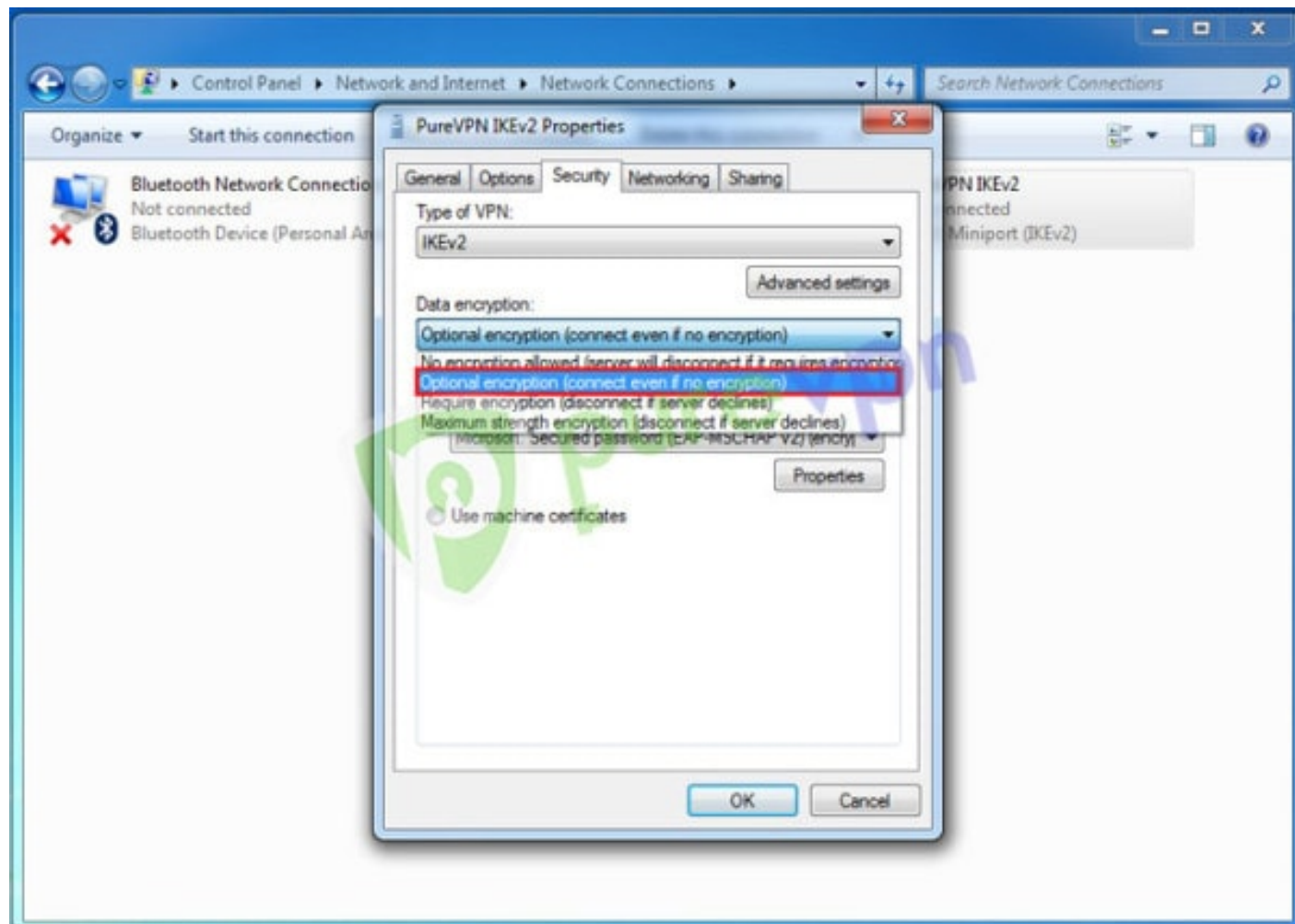
- Right click the newly created VPN connection and click **Properties**.



- Click **Security** tab and select **IKEv2**.

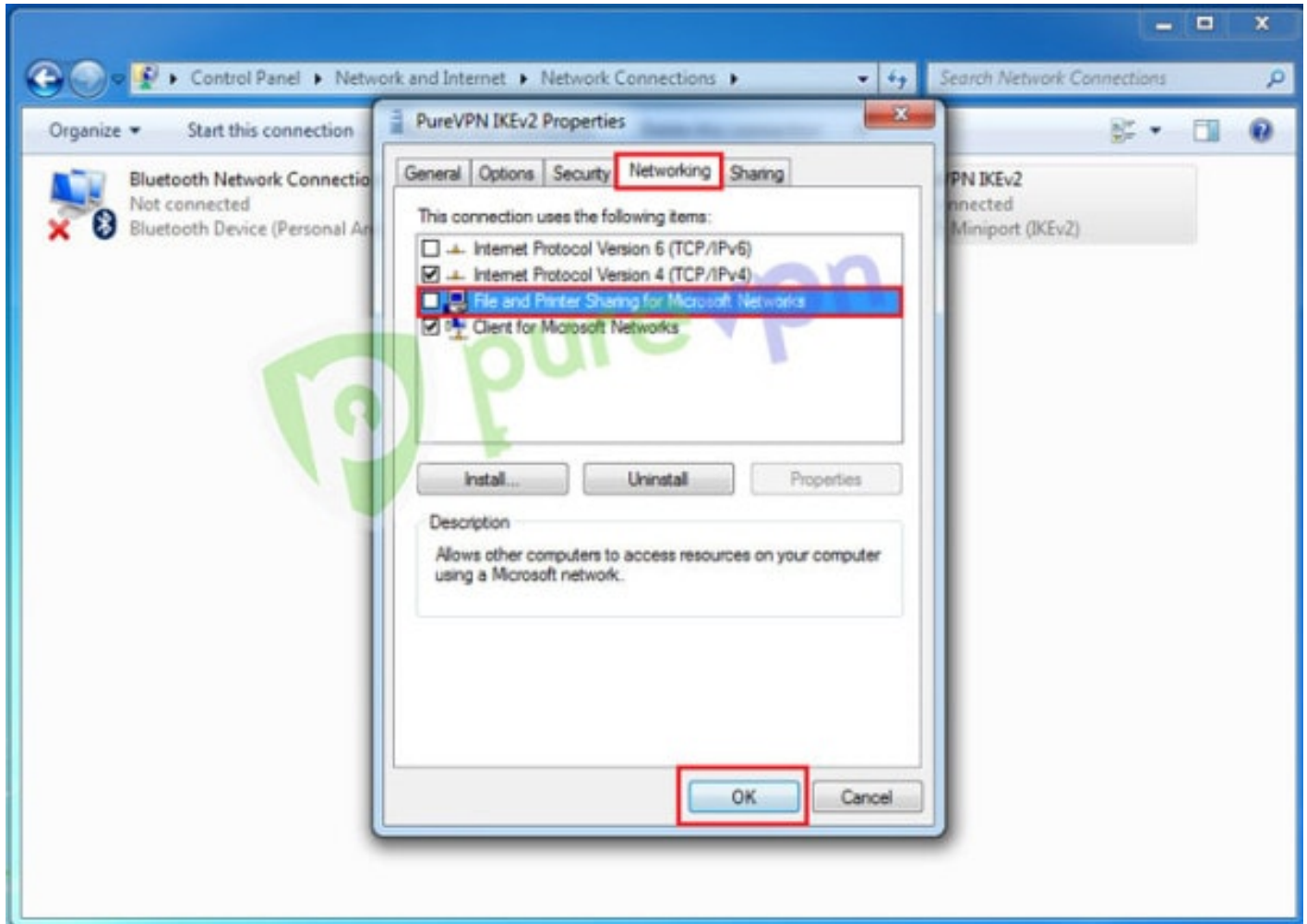


- Select Optional encryption from data encryption drop-down menu.

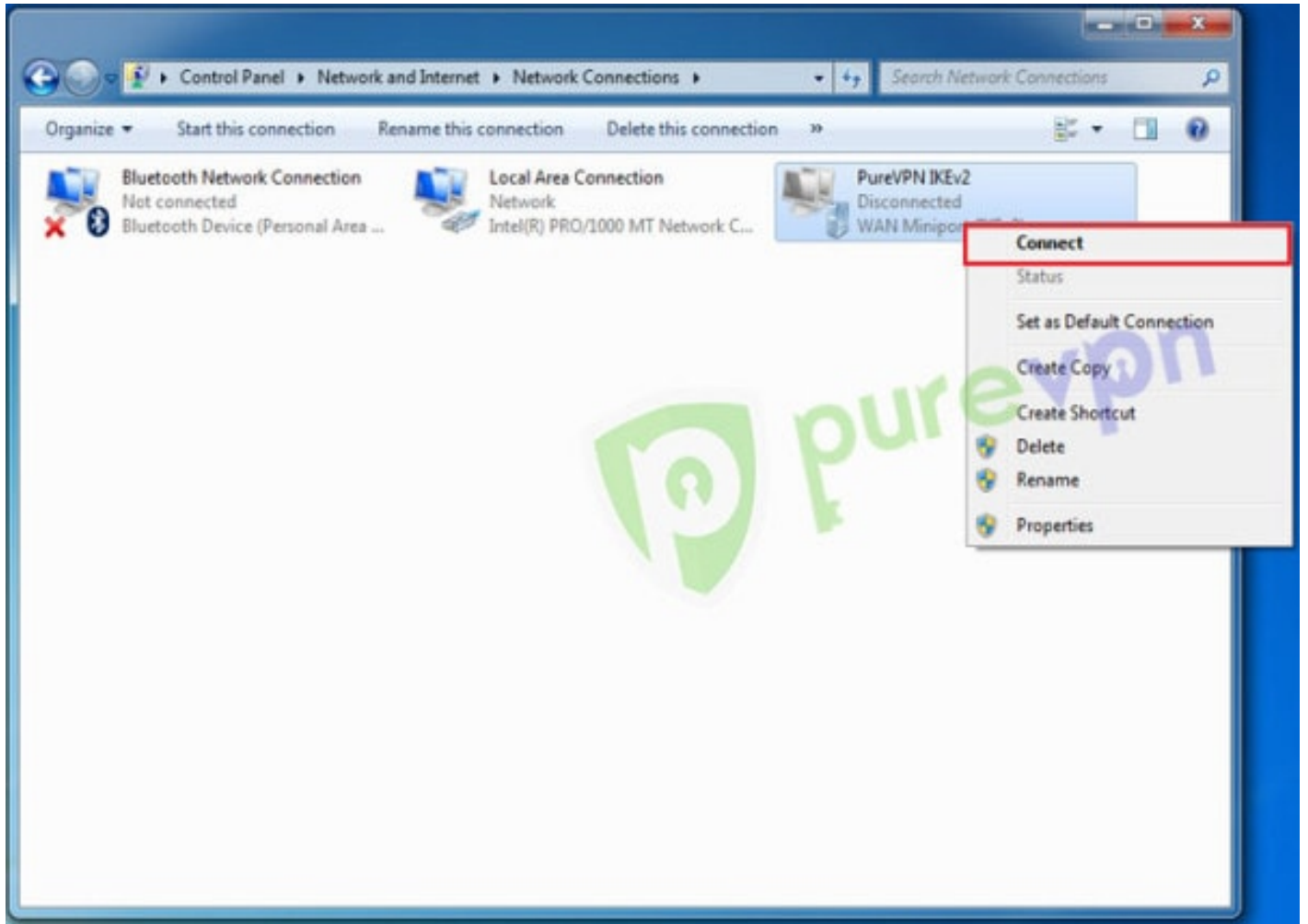


- **Insert the following info:**

1. Click **Networking** tab
2. Uncheck Internet Protocol Version 6 (TCP/IPv6) and File and Printer Sharing for Microsoft Networks then click **OK**

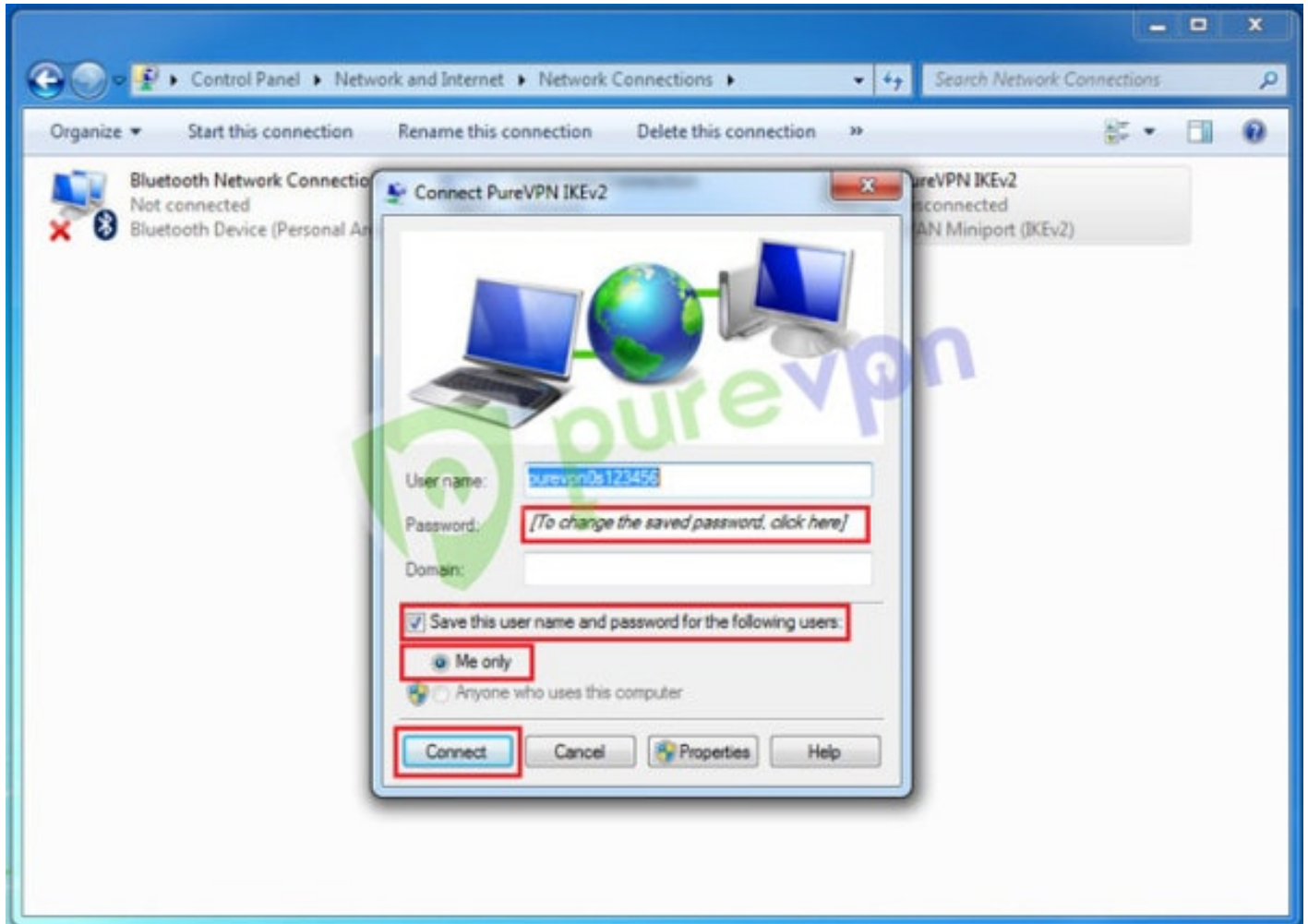


- Right click **VPN connection** and click **Connect** or simply double click the VPN connection.

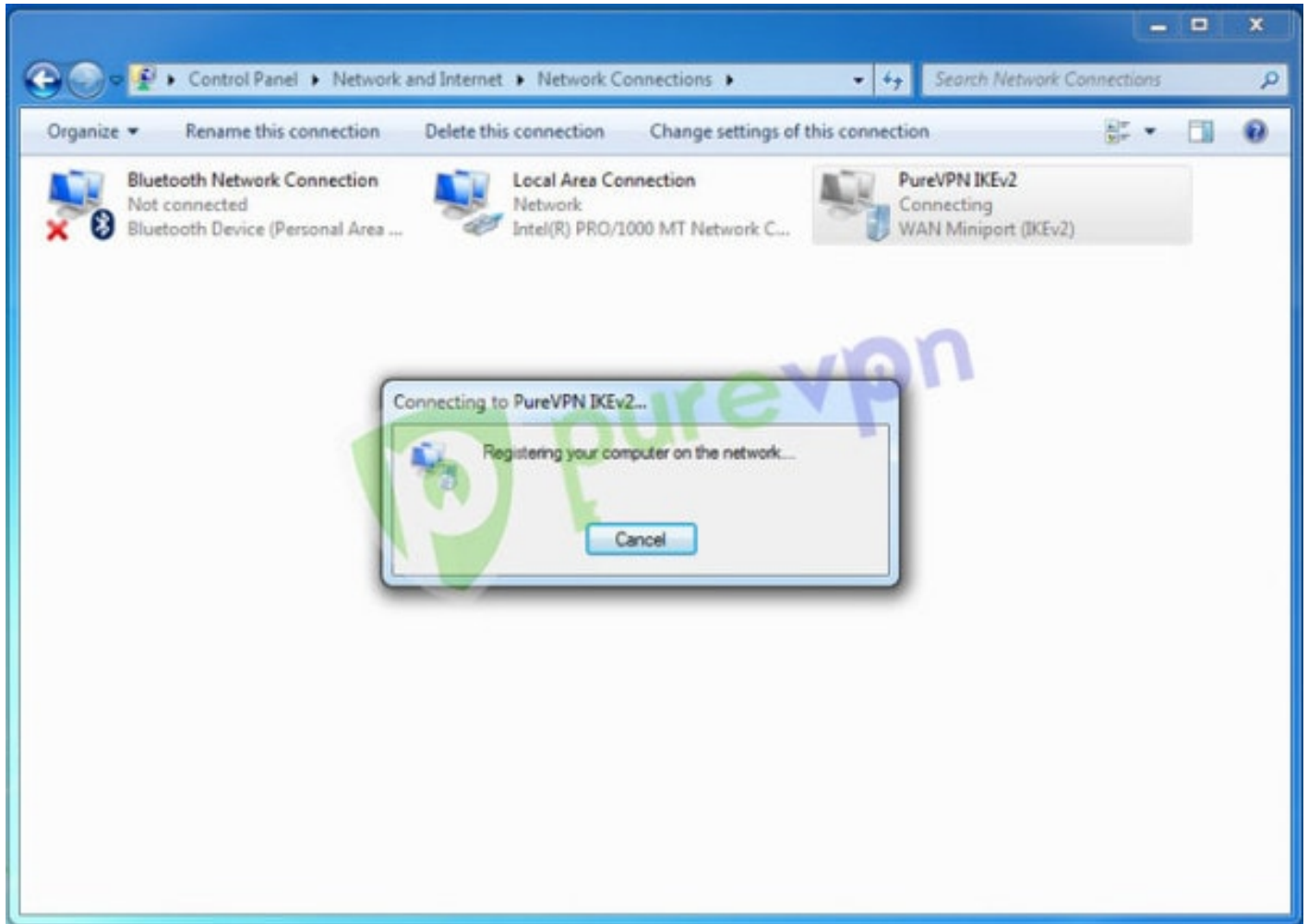


- **Insert the following info:**

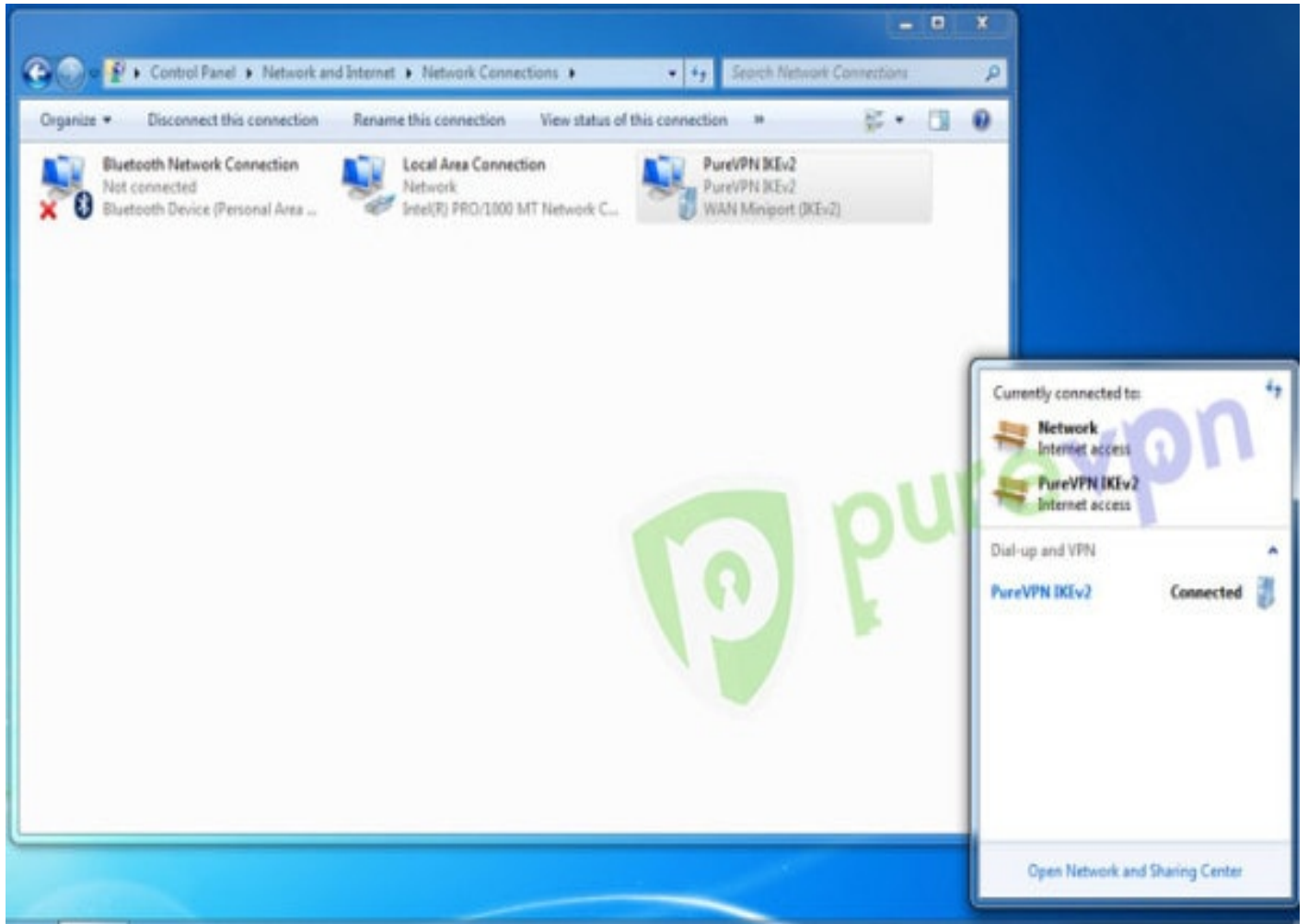
1. Tick Save this username and password for the following users and select Me only or Anyone who uses this computer
2. Insert password again provided by PureVPN
3. Click on **Connect**



- VPN connection will be established after username and password verification.



- You are now **Connected**.

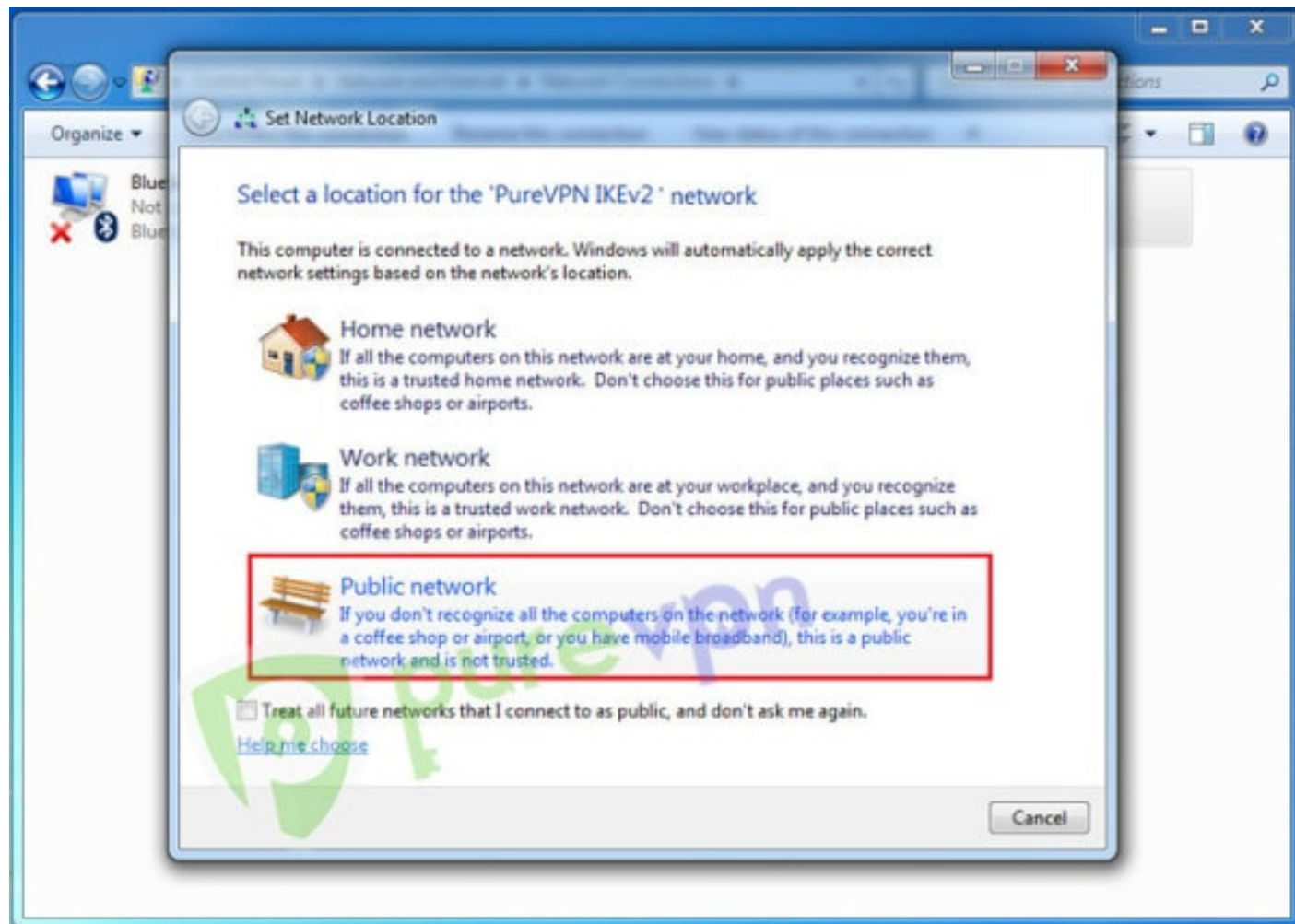


- Select network type as **Public**.

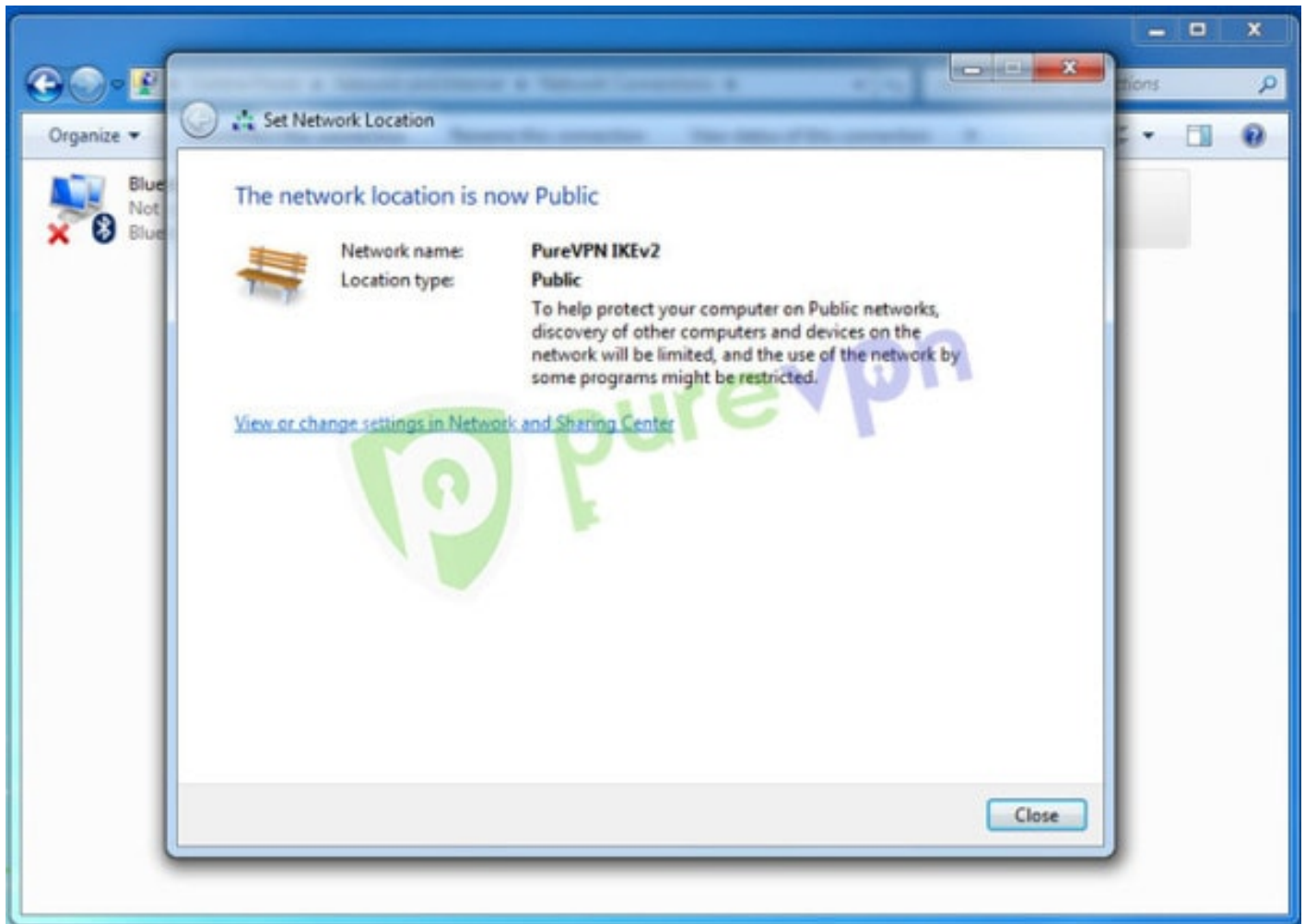
PureVPN Support

Solution of Your Problems

<https://support.purevpn.com>



- Click **Close**.



If you're still unable to connect, then please check the most common errors and their solutions.

Error 868

[Solution](#)

Error 800, 806, 807, 809

[Solution](#)

Error 720


[Solution](#)

Error 691

[Solution](#)

Error 647

[Solution](#)



Was this article helpful? Rate and share your comments below. Your input matters to us and everyone else in the Cyber Security Community.

