

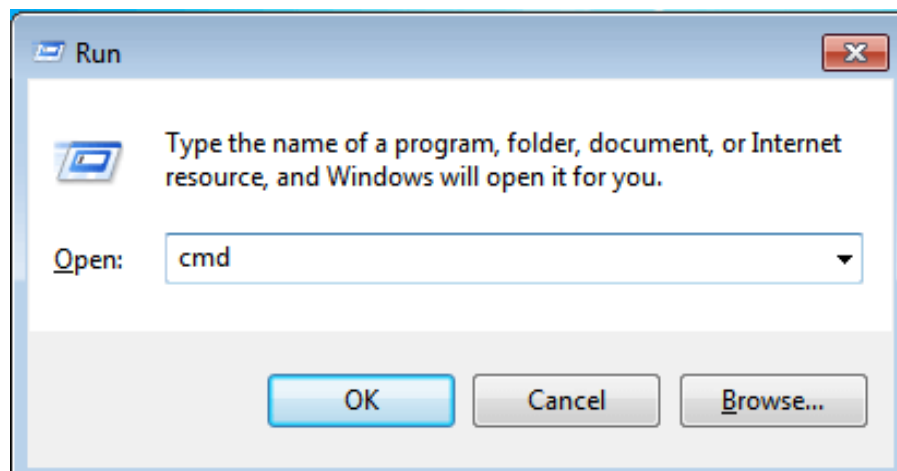
How do I find my router IP address?

In order to find your router's IP address/ gateway, follow the steps below with regards to the operating system you're using. This article will show you how to find your router IP address if you're running Windows or Mac.

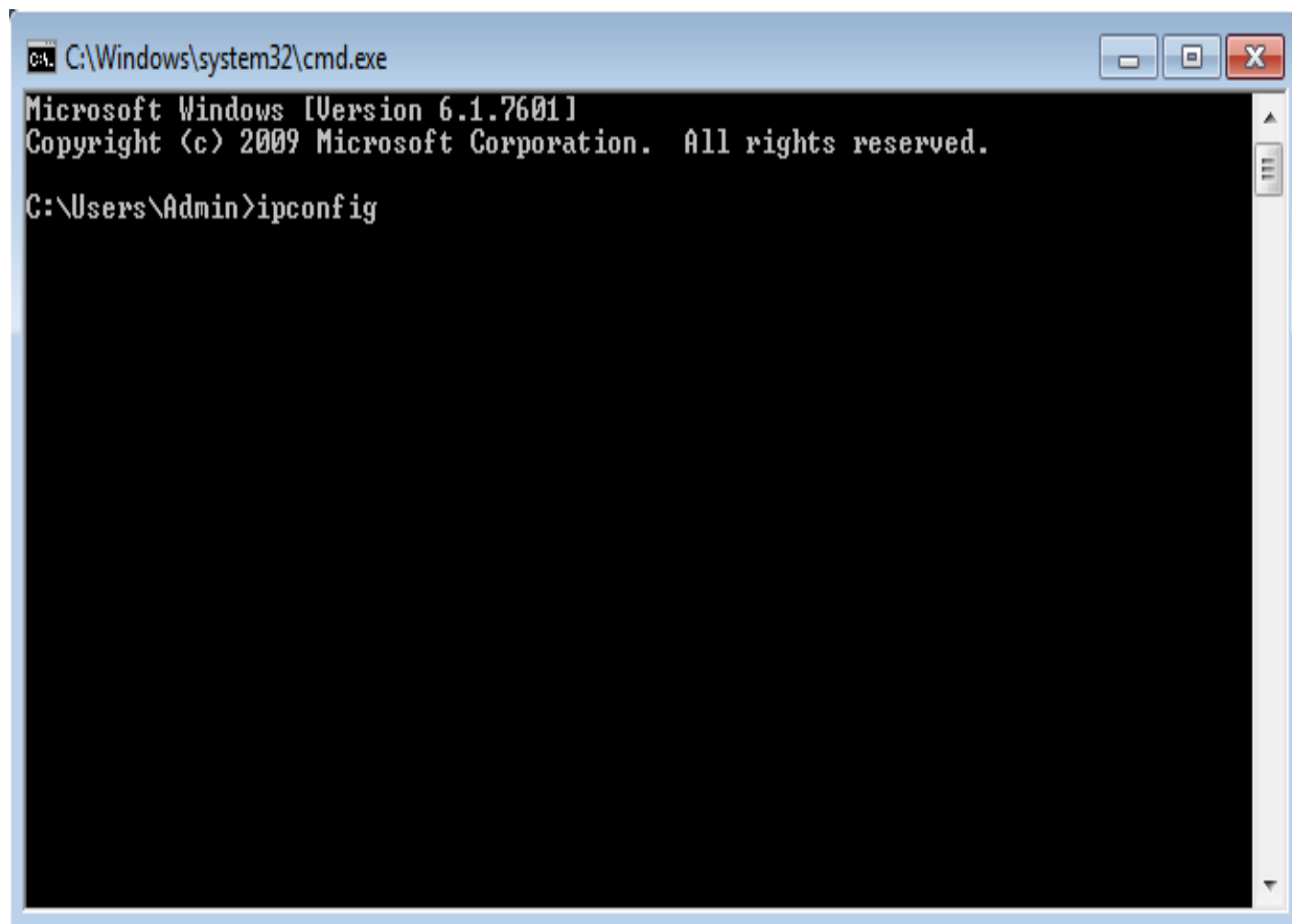
Please make sure that your router is properly wired before trying to access it. If you're not quite sure how to do this, please read through our article: [How to connect two routers](#)

How to check router IP address on Windows

- Hit the Windows key + R to open the Run window. Type cmd and click OK.



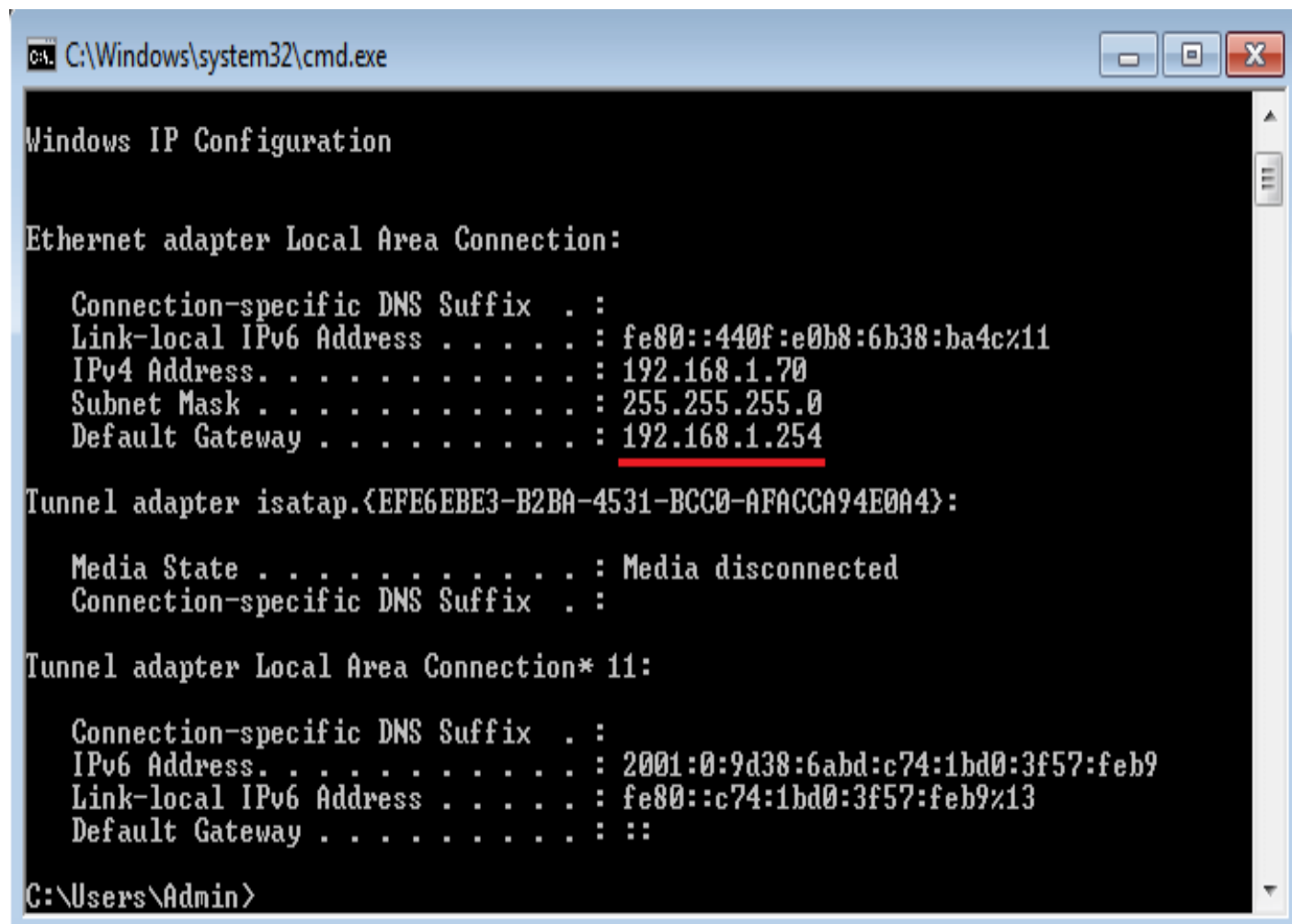
- This will open your command window where you'll type **ipconfig** and hit **Enter**.



```
C:\Windows\system32\cmd.exe
Microsoft Windows [Version 6.1.7601]
Copyright (c) 2009 Microsoft Corporation. All rights reserved.

C:\Users\Admin>ipconfig
```

- This will display your router IP address (underlined in red in the image below) which you can use to access your router gateway.



```
C:\Windows\system32\cmd.exe

Windows IP Configuration

Ethernet adapter Local Area Connection:

    Connection-specific DNS Suffix  . : 
    Link-local IPv6 Address . . . . . : fe80::440f:e0b8:6b38:ba4c%11
    IPv4 Address. . . . . : 192.168.1.70
    Subnet Mask . . . . . : 255.255.255.0
    Default Gateway . . . . . : 192.168.1.254

Tunnel adapter isatap.<EFE6EBE3-B2BA-4531-BCC0-AFACCA94E0A4>:

    Media State . . . . . : Media disconnected
    Connection-specific DNS Suffix  . : 

Tunnel adapter Local Area Connection* 11:

    Connection-specific DNS Suffix  . : 
    IPv6 Address. . . . . : 2001:0:9d38:6abd:c74:1bd0:3f57:feb9
    Link-local IPv6 Address . . . . . : fe80::c74:1bd0:3f57:feb9%13
    Default Gateway . . . . . : ::

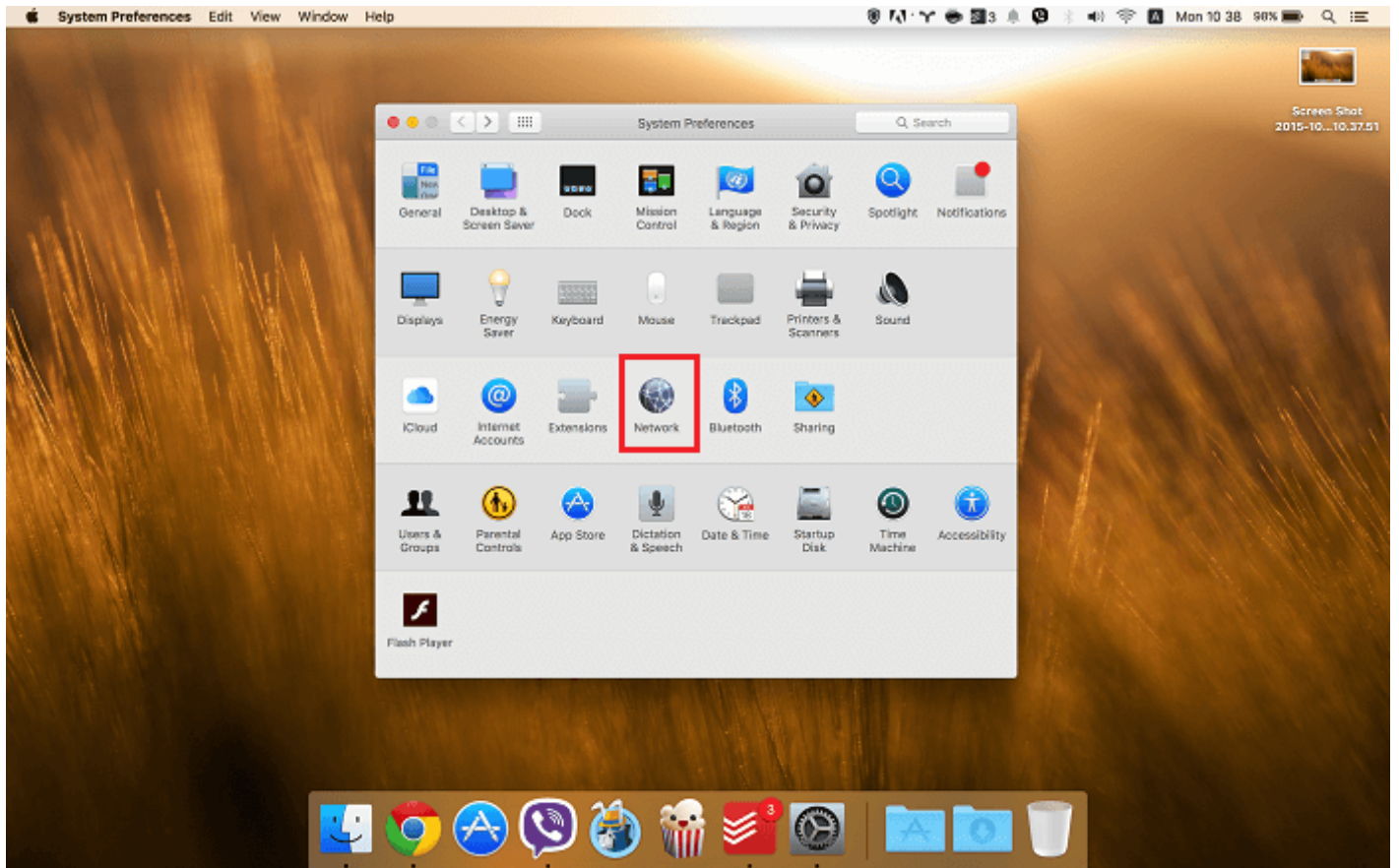
C:\Users\Admin>
```

How to check router IP address on Mac

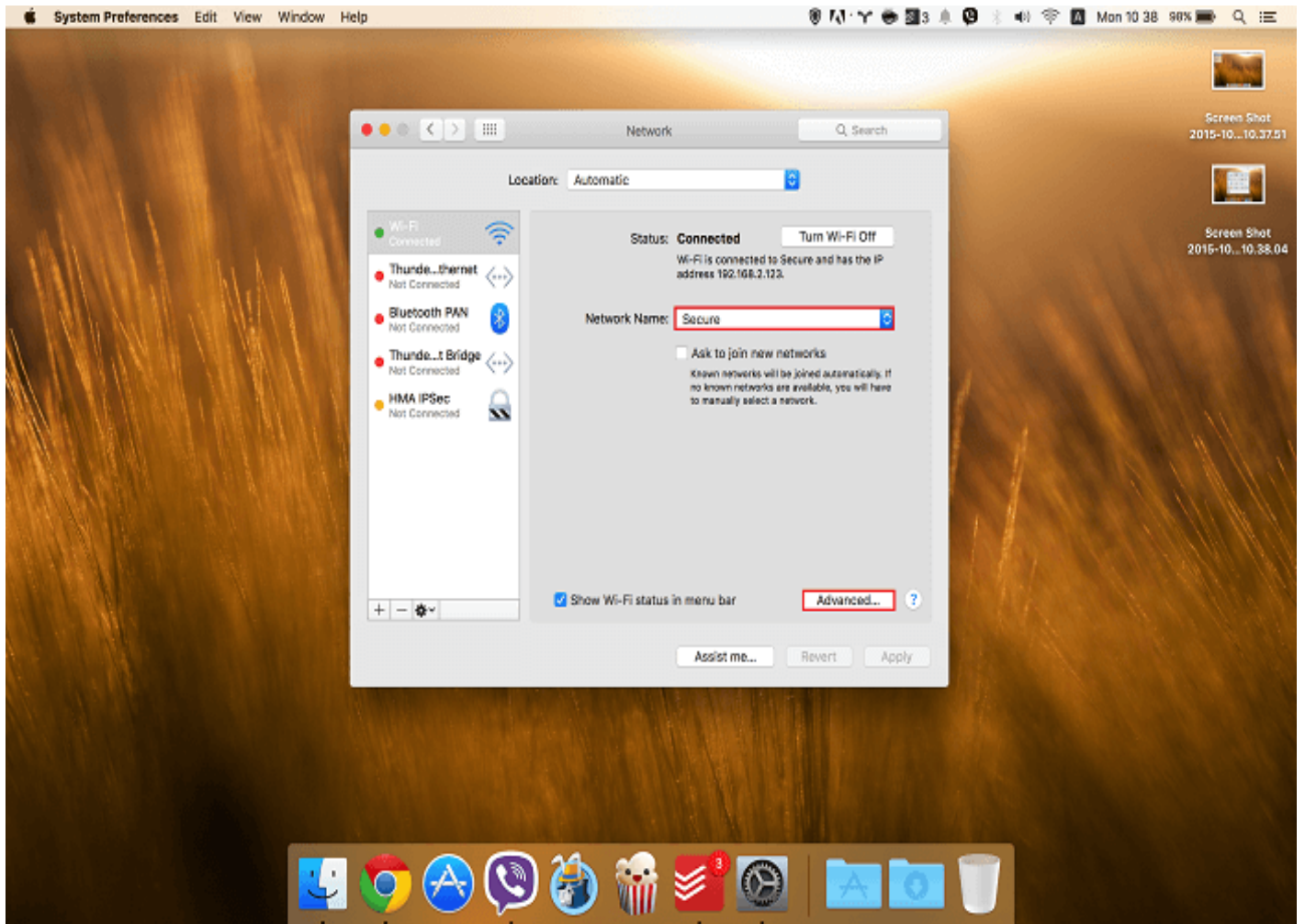
- Click **Apple icon** in the top left corner of your screen. Then select the System Preferences... from the drop-down menu.



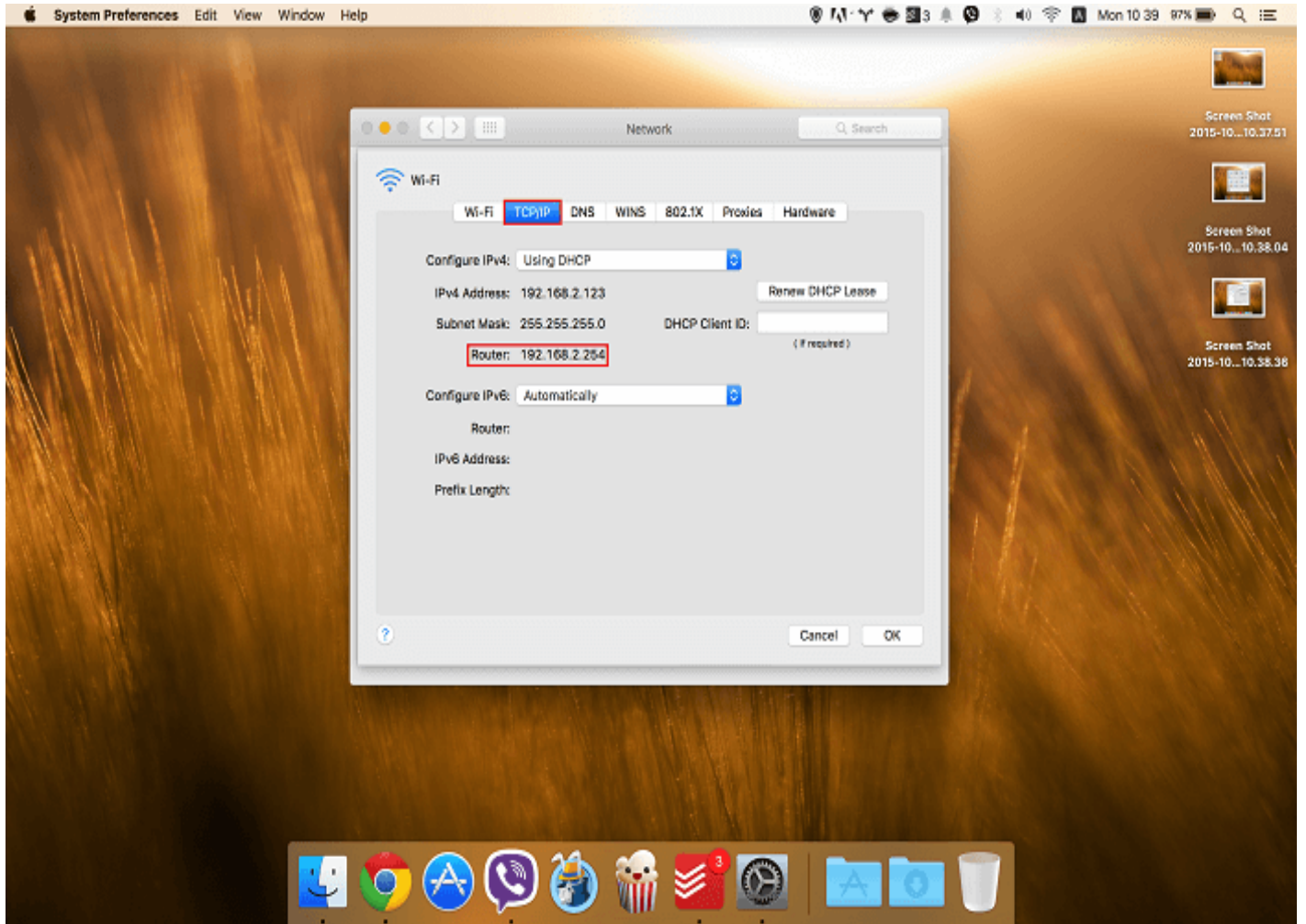
- Select **Network**.




- Select your **Network** name from the drop-down menu In this case the **Network** name is Secure Once selected click **Advanced**.



- Click **TCP/ IP** tab where you'll see your router IP (marked in red in the image below) You can use this IP address to access your router admin panel.





Was this article helpful? Rate and share your comments below. Your input matters to us and everyone else in the Cyber Security Community.